

PARTS CATALOG

Series PLA Ceiling Cassettes

R32/R410A
Indoor unit

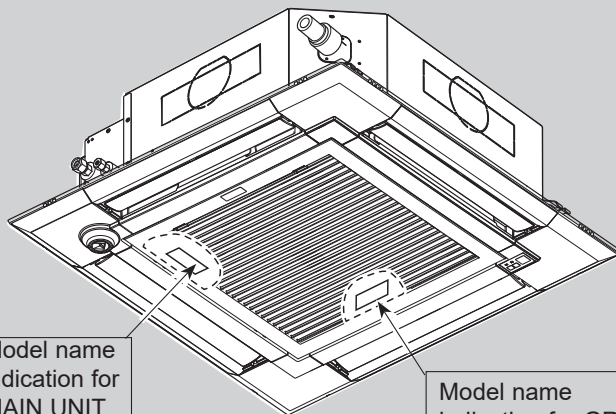
[Model Name]	[Service Ref.]
PLA-ZM35EA2	PLA-ZM35EA2.UK
PLA-ZM35EA2-ER	PLA-ZM35EA2-ER.UK
PLA-ZM35EA2-ET	PLA-ZM35EA2-ET.UK
PLA-ZM50EA2	PLA-ZM50EA2.UK
PLA-ZM50EA2-ER	PLA-ZM50EA2-ER.UK
PLA-ZM50EA2-ET	PLA-ZM50EA2-ET.UK
PLA-ZM60EA2	PLA-ZM60EA2.UK
PLA-ZM60EA2-ER	PLA-ZM60EA2-ER.UK
PLA-ZM60EA2-ET	PLA-ZM60EA2-ET.UK
PLA-ZM71EA2	PLA-ZM71EA2.UK
PLA-ZM71EA2-ER	PLA-ZM71EA2-ER.UK
PLA-ZM71EA2-ET	PLA-ZM71EA2-ET.UK
PLA-ZM100EA2	PLA-ZM100EA2.UK
PLA-ZM100EA2-ER	PLA-ZM100EA2-ER.UK
PLA-ZM100EA2-ET	PLA-ZM100EA2-ET.UK
PLA-ZM125EA2	PLA-ZM125EA2.UK
PLA-ZM125EA2-ER	PLA-ZM125EA2-ER.UK
PLA-ZM125EA2-ET	PLA-ZM125EA2-ET.UK
PLA-ZM140EA2	PLA-ZM140EA2.UK
PLA-ZM140EA2-ER	PLA-ZM140EA2-ER.UK
PLA-ZM140EA2-ET	PLA-ZM140EA2-ET.UK

 Revision:
 • PLP-6EAB has been added in
 REVISED EDITION-A.

OCB777 is void.

Grille model

[Model Name]	[Service Ref.]
PLP-6EA	PLP-6EA
PLP-6EAE	PLP-6EAE
PLP-6EAL	PLP-6EAL
PLP-6EALR1	PLP-6EALR1
PLP-6EALER1	PLP-6EALER1
PLP-6EAJ	PLP-6EAJ
PLP-6EAJE	PLP-6EAJE
PLP-6EALM2	PLP-6EALM2
PLP-6EALME2	PLP-6EALME2
PLP-6EAB	PLP-6EAB


INDOOR UNIT
CONTENTS

1. SERVICE PARTS LIST 2
2. OPTIONAL PARTS 11

SERVICE MANUAL (OCH777)

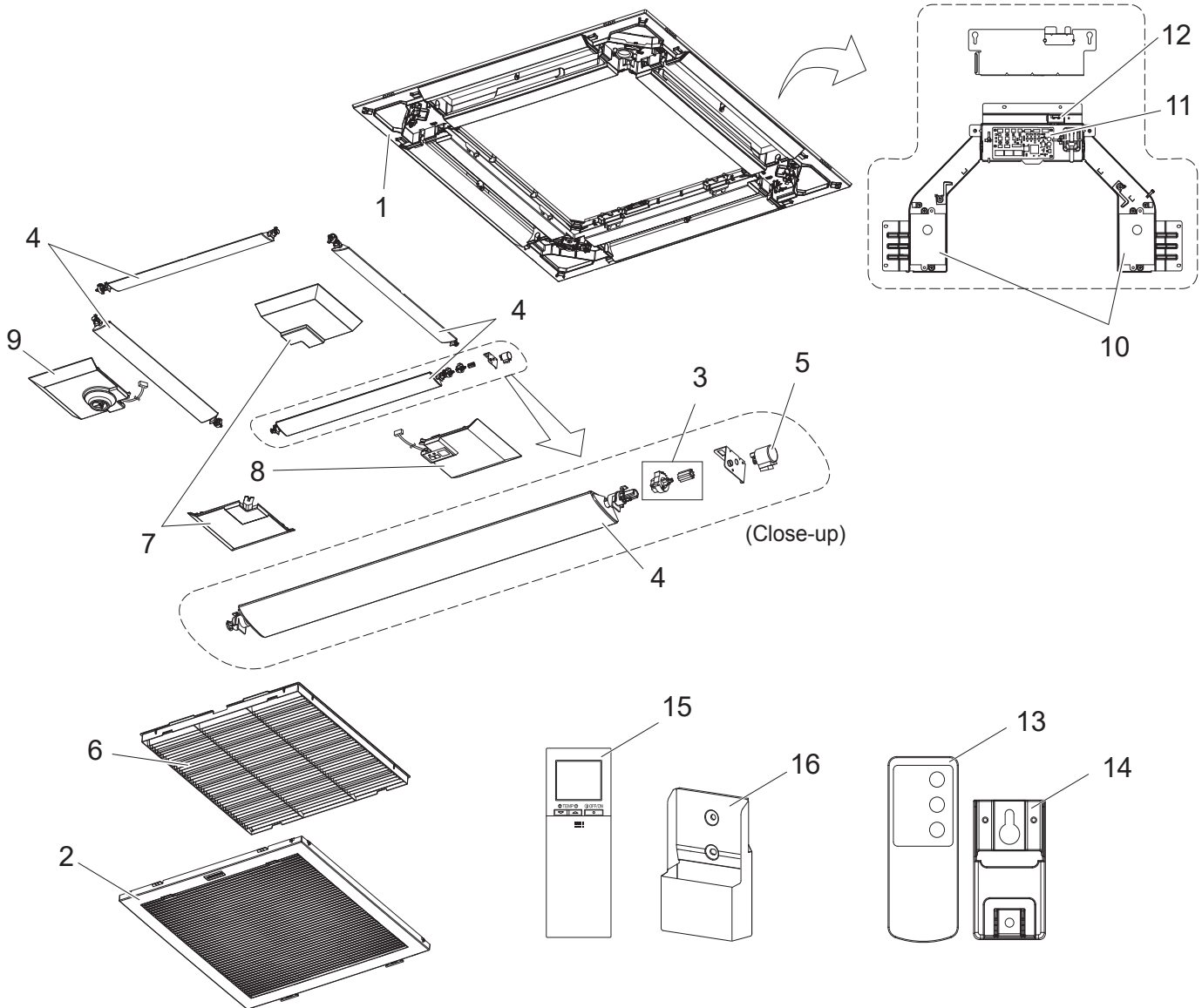
1

SERVICE PARTS LIST

GRILLE PARTS

[Service Ref.]

PLP-6EA	PLP-6EAR1	(Standard)
PLP-6EAL	PLP-6EALR1	(Standard with signal receiver)
PLP-6EAE	PLP-6EAER1	(Standard with i-see Sensor)
PLP-6EALE	PLP-6EALER1	(Standard with signal receiver and i-see Sensor)
PLP-6EAJ		(Elevation)
PLP-6EAJE		(Elevation with i-see Sensor)
PLP-6EALM2		(Standard with signal receiver and wireless remote controller)
PLP-6EALME2		(Standard with signal receiver, i-see Sensor, and wireless remote controller)

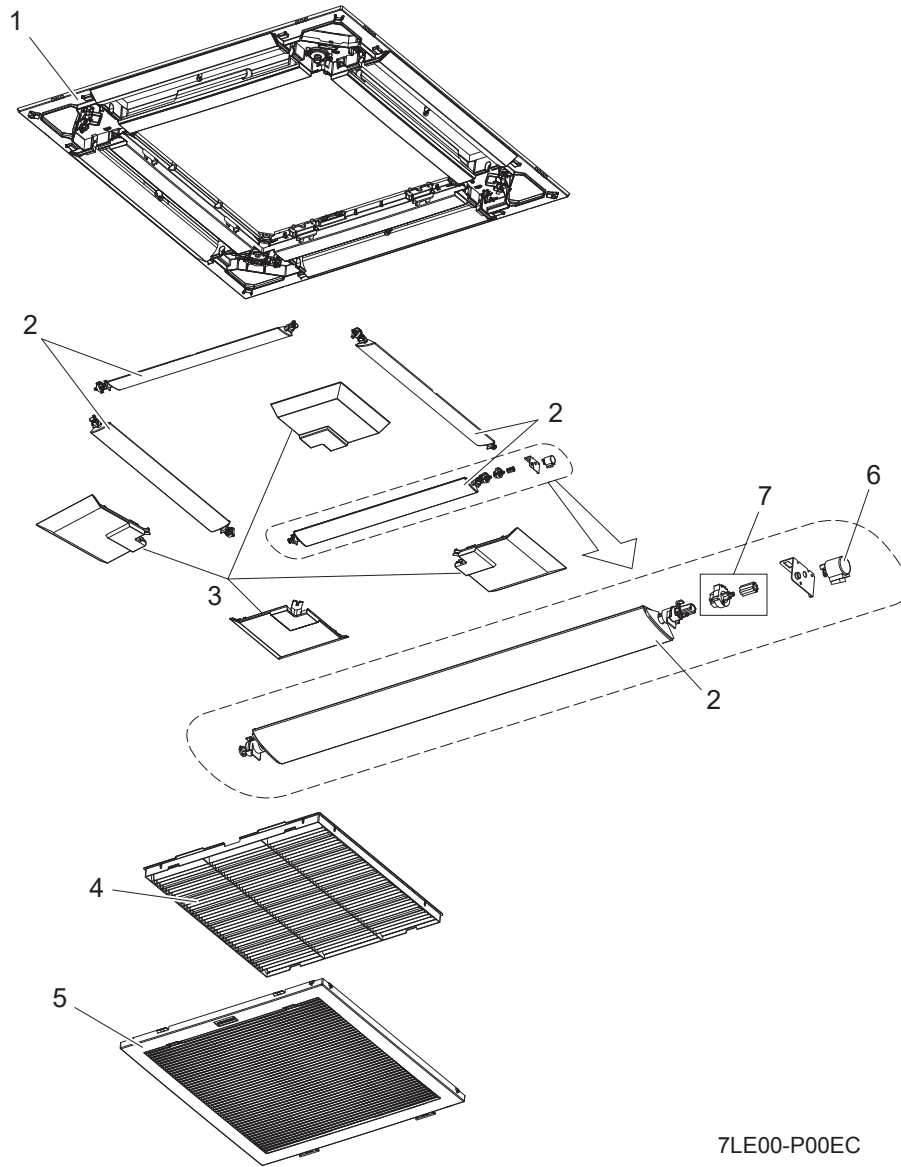


1. The part quantity below indicates the required number of pieces per unit.
2. The circled No. indicates that the part is not shown in the figure.

No.	Parts No.	Parts Name	PLP-6EA	PLP-6EAR1	PLP-6EAL	PLP-6EALR1	PLP-6EAE	PLP-6EAER1	PLP-6EALE	PLP-6EALER1	PLP-6EAJ	PLP-6EAJE	PLP-6EALM2	PLP-6EALME2	Wiring Diagram Symbol	Remarks
1	E 27 D 72 003	AIR OUTLET GRILLE	1	1		1		1								
1	E 27 F 85 003	AIR OUTLET GRILLE		1		1		1		1	1	1	1			
2	E 27 D 72 010	INTAKE GRILLE	1	1		1		1								
2	E 27 F 85 010	INTAKE GRILLE		1		1		1		1			1	1		
2	E 27 F 91 010	INTAKE GRILLE									1	1				
3	E 27 D 72 031	GEAR (VANE & S/M)	4	4		4		4								
3	E 27 F 85 031	GEAR (VANE & S/M)		4		4		4		4	4	4	4	4		
4	E 27 D 72 037	AUTO VANE & VANE BUSH	4	4		4		4								1PC/SET
4	E 27 F 85 037	AUTO VANE & VANE BUSH		4		4		4		4	4	4	4	4		1PC/SET
5	E 27 103 303	VANE MOTOR	4	4	4	4	4	4	4	4	4	4	4	4	MV	1PC/SET
6	E 27 D 72 100	AIR FILTER	1	1		1		1								
6	E 27 F 85 100	AIR FILTER		1		1		1		1	1	1	1	1		
7	E 27 D 72 975	CORNER PANEL	4	3		3		2								
7	E 27 F 85 975	CORNER PANEL		4		3		3		2	3	2	3	2		1PC/SET
8	E 27 D 73 975	CORNER PANEL (Signal receiver)		1				1								
8	E 27 F 88 975	CORNER PANEL (Signal receiver)				1				1	1	1	1	1		
9	E 27 D 74 975	CORNER PANEL (i-see Sensor)					1		1							
9	E 27 F 86 975	CORNER PANEL (i-see Sensor)						1		1			1			
10	E 27 F 91 471	MOTOR BOX									2	2				2PCS/SET
11	E 27 F 91 447	INDOOR CONTROLLER BOARD									1	1				
12	E 27 F 91 316	LIMIT SWITCH									1	1				
13	E 27 F 91 426	REMOTE CONTROLLER INFRARED									1	1				for Elevation panel
14	E 27 F 91 083	REMOTE CONTROLLER HOLDER									1	1				for Elevation panel
15	E 27 58G 426	REMOTE CONTROLLER INFRARED											1	1		PAR-SL101A-E
16	E 27 D 44 083	REMOTE CONTROLLER HOLDER											1	1		for PAR-SL101A-E

PLP-6EAB

(Black panel)

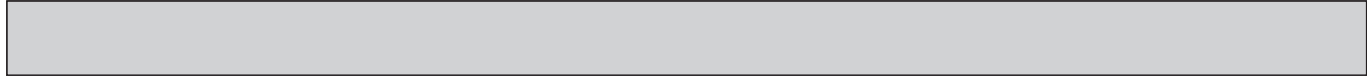


7LE00-P00EC

1. The part quantity below indicates the required number of pieces per unit.

2. The circled No. indicates that the part is not shown in the figure.

No.	Parts No.	Parts Name	PLP-6EAB	Wiring Diagram Symbol	Remarks
1	T7W E24 003	PANEL ASSY	1		
2	T7W E15 002	VANE & BUSH ASSY	4		
3	T7W E14 638	CORNER PANEL	4		
4	T7W E05 500	L.L FILTER	1		
5	T7W E27 691	INTAKE GRILLE	1		
6	R01 E19 223	STEPPING MOTOR	4	MV	
7	R01 E06 040	GEARS SET	4		



STRUCTURAL AND FUNCTIONAL PARTS

PLA-ZM35EA2.UK

PLA-ZM35EA2-ER.UK

PLA-ZM35EA2-ET.UK

PLA-ZM50EA2.UK

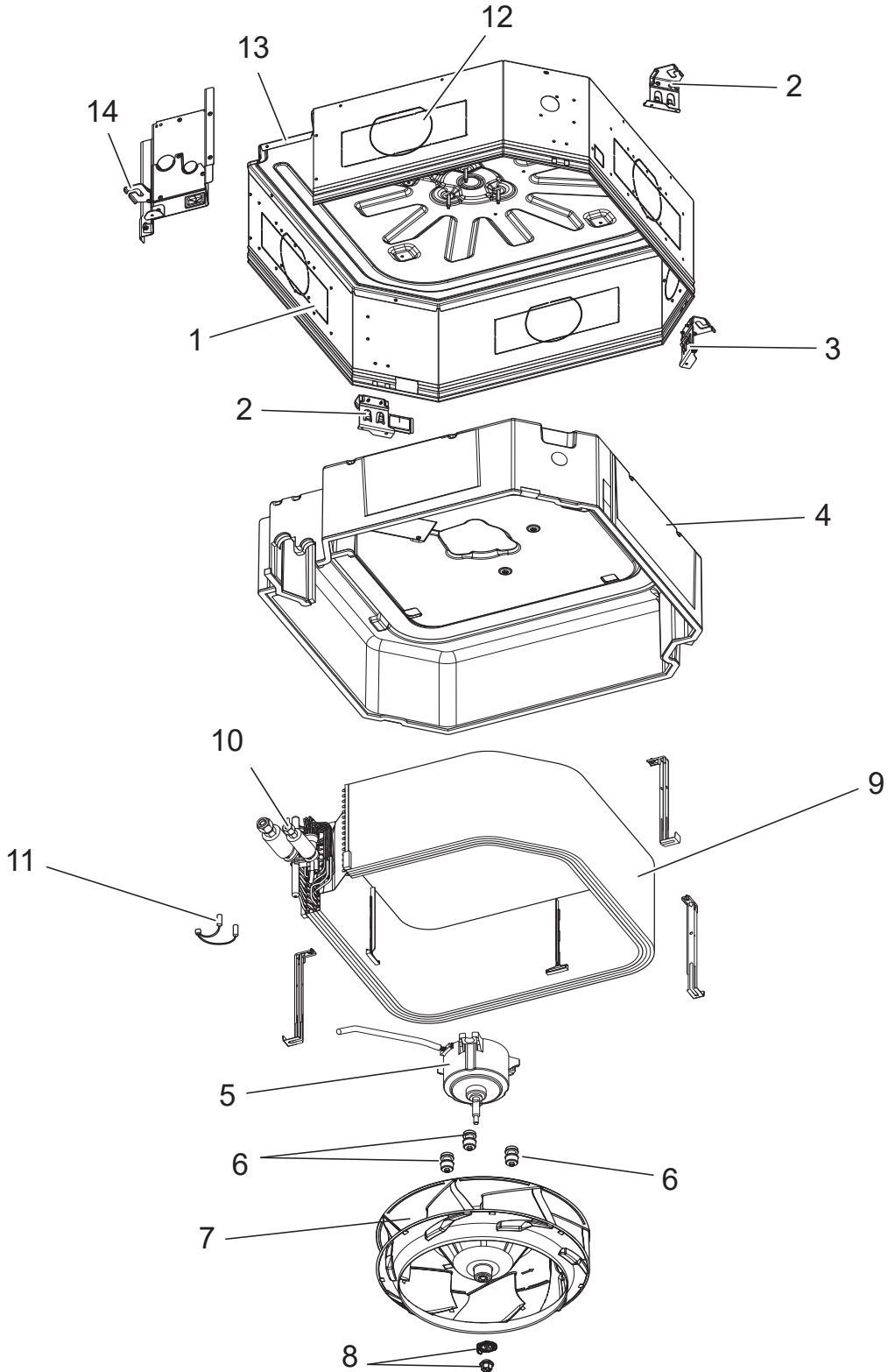
PLA-ZM50EA2-ER.UK

PLA-ZM50EA2-ET.UK

PLA-ZM60EA2.UK

PLA-ZM60EA2-ER.UK

PLA-ZM60EA2-ET.UK



1. The part quantity below indicates the required number of pieces per unit.
2. The circled No. indicates that the part is not shown in the figure.

No.	Parts No.	Parts Name	PLA-ZM35EA2.UK	PLA-ZM35EA2-ER.UK	PLA-ZM35EA2-ET.UK	PLA-ZM50EA2.UK	PLA-ZM50EA2-ER.UK	PLA-ZM50EA2-ET.UK	PLA-ZM60EA2.UK	PLA-ZM60EA2-ER.UK	PLA-ZM60EA2-ET.UK	Wiring Diagram Symbol	Remarks
1	S 7 0 0 B 7 6 8 8	DRUM 2 ASSY	1	1	1	1	1	1	1	1	1		
2	S 7 0 E A 2 1 3 0	LEG PUMP	2	2	2	2	2	2	2	2	2		
3	S 7 0 E A 1 1 3 0	LEG EA	1	1	1	1	1	1	1	1	1		
4	S 7 0 0 B 4 6 5 9	INNER COVER ASSY-S	1	1	1	1	1	1	1	1	1		
5	S 7 0 0 B 4 7 6 2	FAN MOTOR	1	1	1	1	1	1	1	1	1	MF	(DC)-S
6	S 7 0 0 B 1 1 0 5 H	MOTOR MOUNT	3	3	3	3	3	3	3	3	3		
7	S 7 0 0 B 4 1 1 4	TURBO FAN	1	1	1	1	1	1	1	1	1		
8	S 7 0 1 1 B 0 9 7	SPL WASHER/NUT	1	1	1	1	1	1	1	1	1		
9	S 7 0 B 2 4 4 8 0	HEAT EXCHANGER	1	1	1	1	1	1					
9	S 7 0 B 2 5 4 8 0	HEAT EXCHANGER							1	1	1		
10	S 7 0 0 B 2 0 9 7	FLARE NUT	1	1	1	1	1	1					1/2"
10	S 7 0 0 B 3 0 9 7	FLARE NUT	1	1	1	1	1	1					1/4"
10	S 7 0 0 B 4 0 9 7	FLARE NUT							1	1	1		3/8"
10	S 7 0 0 B 5 0 9 7	FLARE NUT							1	1	1		5/8"
11	S 7 0 0 B 5 2 0 2	THERMISTOR	1	1	1	1	1	1	1	1	1	TH2/TH5	
12	S 7 0 0 B 5 6 8 8	DRUM 1 ASSY	1	1	1	1	1	1	1	1	1		
13	S 7 0 0 B 2 6 8 7	BASE	1	1	1	1	1	1	1	1	1		
14	S 7 0 E A 3 1 3 0	LEG PIPE	1	1	1	1	1	1	1	1	1		

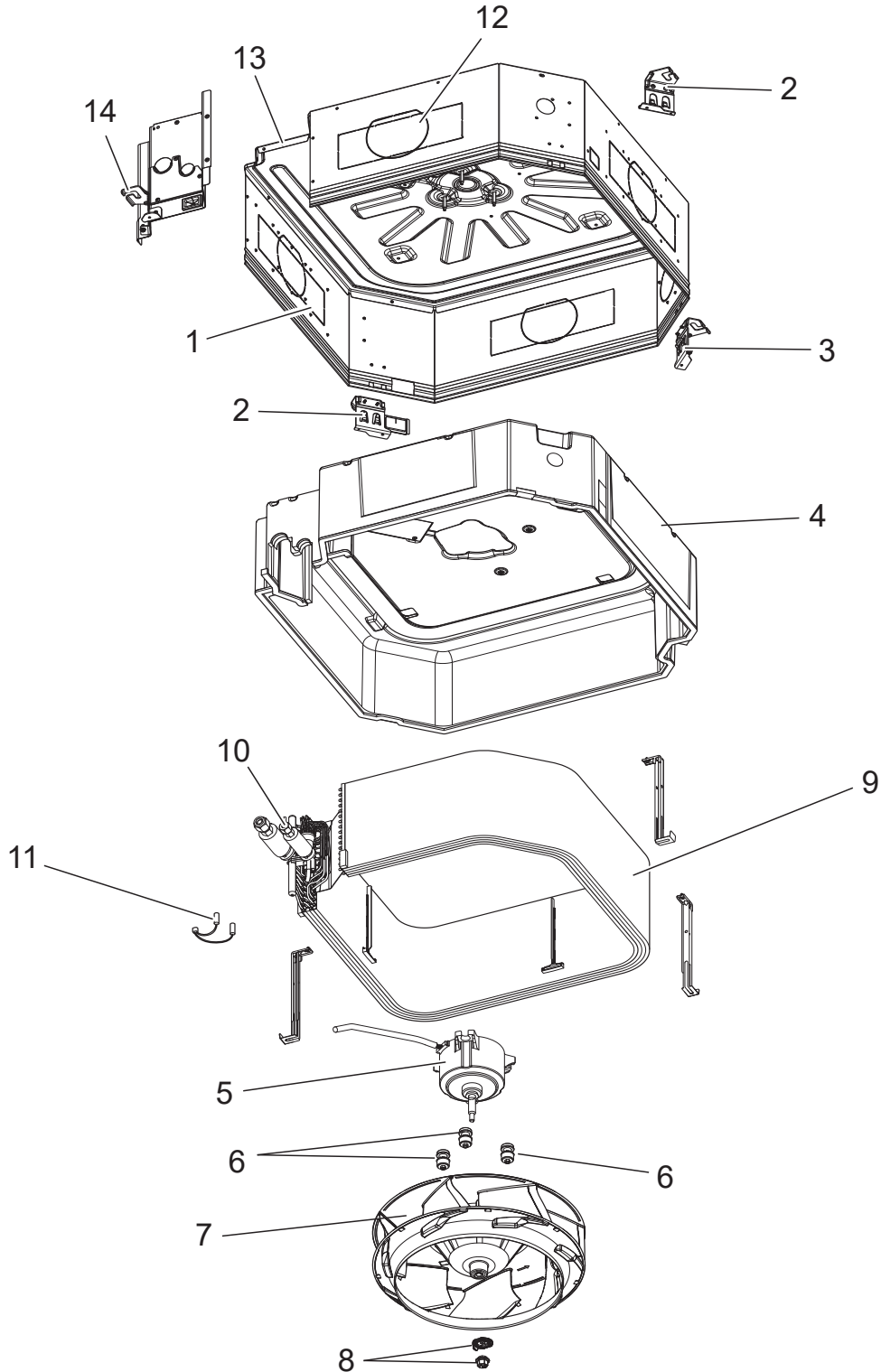


STRUCTURAL AND FUNCTIONAL PARTS

PLA-ZM71EA2.UK
PLA-ZM100EA2.UK
PLA-ZM125EA2.UK
PLA-ZM140EA2.UK

PLA-ZM71EA2-ER.UK
PLA-ZM100EA2-ER.UK
PLA-ZM125EA2-ER.UK
PLA-ZM140EA2-ER.UK

PLA-ZM71EA2-ET.UK
PLA-ZM100EA2-ET.UK
PLA-ZM125EA2-ET.UK
PLA-ZM140EA2-ET.UK



1. The part quantity below indicates the required number of pieces per unit.
2. The circled No. indicates that the part is not shown in the figure.

No.	Parts No.	Parts Name	PLA-ZM71EA2.UK	PLA-ZM71EA2-ER.UK	PLA-ZM71EA2-ET.UK	PLA-ZM100EA2.UK	PLA-ZM100EA2-ER.UK	PLA-ZM100EA2-ET.UK	PLA-ZM125EA2.UK	PLA-ZM125EA2-ER.UK	PLA-ZM125EA2-ET.UK	PLA-ZM140EA2.UK	PLA-ZM140EA2-ER.UK	PLA-ZM140EA2-ET.UK	Wiring Diagram Symbol	Remarks
			1	1	1	1	1	1	1	1	1	1	1	1		
1	S 7 0 0 B 8 6 8 8	DRUM 2 ASSY	1	1	1	1	1	1	1	1	1	1	1	1		
2	S 7 0 E A 2 1 3 0	LEG PUMP	2	2	2	2	2	2	2	2	2	2	2	2		
3	S 7 0 E A 1 1 3 0	LEG EA	1	1	1	1	1	1	1	1	1	1	1	1		
4	S 7 0 0 B 5 6 5 9	INNER COVER ASSY-L	1	1	1	1	1	1	1	1	1	1	1	1		
5	S 7 0 0 B 5 7 6 2	FAN MOTOR	1	1	1	1	1	1	1	1	1	1	1	1	MF	(DC)-M
6	S 7 0 0 B 1 1 0 5 H	MOTOR MOUNT	3	3	3	3	3	3	3	3	3	3	3	3		
7	S 7 0 0 B 4 1 1 4	TURBO FAN	1	1	1	1	1	1	1	1	1	1	1	1		
8	S 7 0 1 1 B 0 9 7	SPL WASHER/NUT	1	1	1	1	1	1	1	1	1	1	1	1		
9	S 7 0 B 2 6 4 8 0	HEAT EXCHANGER	1	1	1											
9	S 7 0 B 2 7 4 8 0	HEAT EXCHANGER				1	1	1	1	1	1	1	1	1		
10	S 7 0 0 B 4 0 9 7	FLARE NUT	1	1	1	1	1	1	1	1	1	1	1	1		3/8"
10	S 7 0 0 B 5 0 9 7	FLARE NUT	1	1	1	1	1	1	1	1	1	1	1	1		5/8"
11	S 7 0 0 B 5 2 0 2	THERMISTOR	1	1	1	1	1	1	1	1	1	1	1	1	TH2/TH5	
12	S 7 0 0 B 6 6 8 8	DRUM 1 ASSY	1	1	1	1	1	1	1	1	1	1	1	1		
13	S 7 0 0 B 2 6 8 7	BASE	1	1	1	1	1	1	1	1	1	1	1	1		
14	S 7 0 E A 3 1 3 0	LEG PIPE	1	1	1	1	1	1	1	1	1	1	1	1		

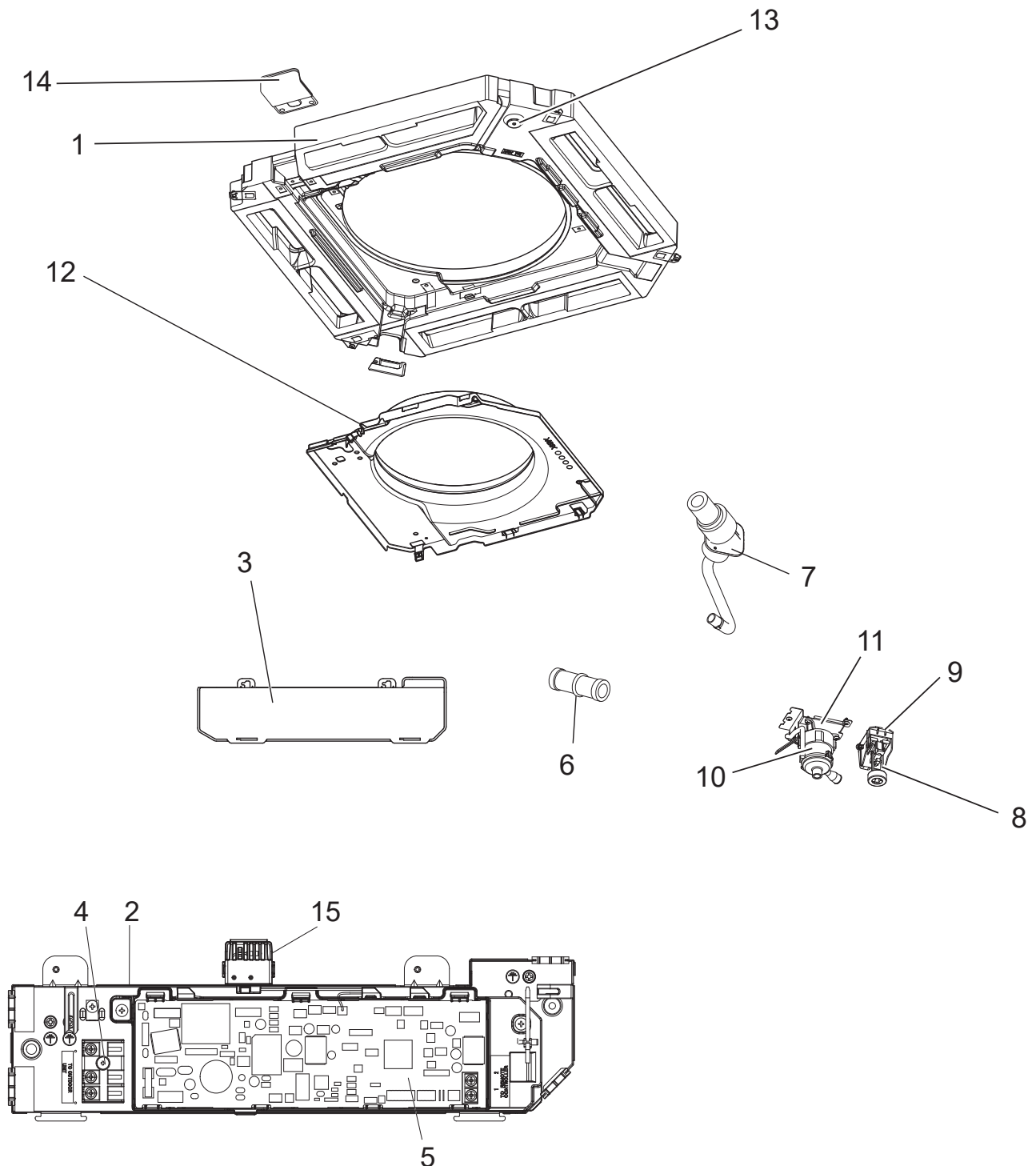


FUNCTIONAL AND ELECTRICAL PARTS

PLA-ZM35EA2.UK
PLA-ZM50EA2.UK
PLA-ZM60EA2.UK
PLA-ZM71EA2.UK
PLA-ZM100EA2.UK
PLA-ZM125EA2.UK
PLA-ZM140EA2.UK

PLA-ZM35EA2-ER.UK
PLA-ZM50EA2-ER.UK
PLA-ZM60EA2-ER.UK
PLA-ZM71EA2-ER.UK
PLA-ZM100EA2-ER.UK
PLA-ZM125EA2-ER.UK
PLA-ZM140EA2-ER.UK

PLA-ZM35EA2-ET.UK
PLA-ZM50EA2-ET.UK
PLA-ZM60EA2-ET.UK
PLA-ZM71EA2-ET.UK
PLA-ZM100EA2-ET.UK
PLA-ZM125EA2-ET.UK
PLA-ZM140EA2-ET.UK



1. The part quantity below indicates the required number of pieces per unit.
2. The circled No. indicates that the part is not shown in the figure.

No.	Parts No.	Parts Name	PLA-ZM35EA2.UK	PLA-ZM35EA2-ER.UK	PLA-ZM35EA2-ET.UK	PLA-ZM50EA2.UK	PLA-ZM50EA2-ER.UK	PLA-ZM50EA2-ET.UK	PLA-ZM60EA2.UK	PLA-ZM60EA2-ER.UK	PLA-ZM60EA2-ET.UK	Wiring Diagram Symbol	Remarks [Drawing No.]
1	S 7 0 0 B 6 5 2 9	DRAIN PAN	1	1	1	1	1	1	1	1	1		
2	S 7 0 0 B 7 5 0 1	ELECTRICAL CONTROL BOX	1	1	1	1	1	1	1	1	1		
3	—	CONT COVER	1	1	1	1	1	1	1	1	1		[BK02Y559G06]
4	S 7 0 K 0 3 7 1 6	TERMINAL BLOCK	1	1	1	1	1	1	1	1	1	TB4	3P (S1,S2,S3)
5	S 7 0 B 1 6 3 1 0	INDOOR CONTROLLER BOARD	1	1	1	1	1	1	1	1	1	I.B	
6	S 7 0 2 9 H 5 2 3	DRAIN SOCKET	1	1	1	1	1	1	1	1	1		
7	S 7 0 0 B 2 5 2 7 H	DRAIN HOSE ASSY (DRAIN PUMP)	1	1	1	1	1	1	1	1	1		
8	S 7 0 0 B 2 2 6 6	FLOAT SWITCH	1	1	1	1	1	1	1	1	1	FS	
9	S 7 0 0 B 2 5 3 3	FLOAT SWITCH-BASE	1	1	1	1	1	1	1	1	1		
10	S 7 0 0 B 2 3 5 5	DRAIN PUMP	1	1	1	1	1	1	1	1	1	DP	220-240 V
11	S 7 0 0 B 3 5 3 3	DRAIN PUMP BASE	1	1	1	1	1	1	1	1	1		
12	S 7 0 0 B 3 5 0 2	BELLMOUTH-S	1	1	1	1	1	1	1	1	1		
13	S 7 0 A 4 1 5 2 4 H	DRAIN PLUG	1	1	1	1	1	1	1	1	1		
14	S 7 0 E A 1 6 6 3	WIRE COVER HI-ASSY	1	1	1	1	1	1	1	1	1		
15	S 7 0 0 B 3 2 0 2	ROOM TEMPERATURE THERMISTOR	1	1	1	1	1	1	1	1	1	TH1	220XAP

No.	Parts No.	Parts Name	PLA-ZM71EA2.UK	PLA-ZM71EA2-ER.UK	PLA-ZM71EA2-ET.UK	PLA-ZM100EA2.UK	PLA-ZM100EA2-ER.UK	PLA-ZM100EA2-ET.UK	PLA-ZM125EA2.UK	PLA-ZM125EA2-ER.UK	PLA-ZM125EA2-ET.UK	PLA-ZM140EA2.UK	PLA-ZM140EA2-ER.UK	PLA-ZM140EA2-ET.UK	Wiring Diagram Symbol	Remarks [Drawing No.]
1	S 7 0 0 B 6 5 2 9	DRAIN PAN	1	1	1	1	1	1	1	1	1	1	1	1		
2	S 7 0 0 B 7 5 0 1	ELECTRICAL CONTROL BOX	1	1	1	1	1	1	1	1	1	1	1	1		
3	—	CONT COVER	1	1	1	1	1	1	1	1	1	1	1	1		[BK02Y559G06]
4	S 7 0 K 0 3 7 1 6	TERMINAL BLOCK	1	1	1	1	1	1	1	1	1	1	1	1	TB4	3P (S1,S2,S3)
5	S 7 0 B 1 6 3 1 0	INDOOR CONTROLLER BOARD	1	1	1	1	1	1	1	1	1	1	1	1	I.B	
6	S 7 0 2 9 H 5 2 3	DRAIN SOCKET	1	1	1	1	1	1	1	1	1	1	1	1		
7	S 7 0 0 B 2 5 2 7 H	DRAIN HOSE ASSY (DRAIN PUMP)	1	1	1	1	1	1	1	1	1	1	1	1		
8	S 7 0 0 B 2 2 6 6	FLOAT SWITCH	1	1	1	1	1	1	1	1	1	1	1	1	FS	
9	S 7 0 0 B 2 5 3 3	FLOAT SWITCH-BASE	1	1	1	1	1	1	1	1	1	1	1	1		
10	S 7 0 0 B 2 3 5 5	DRAIN PUMP	1	1	1	1	1	1	1	1	1	1	1	1	DP	220-240 V
11	S 7 0 0 B 3 5 3 3	DRAIN PUMP BASE	1	1	1	1	1	1	1	1	1	1	1	1		
12	S 7 0 0 B 4 5 0 2	BELLMOUTH-L	1	1	1	1	1	1	1	1	1	1	1	1		
13	S 7 0 A 4 1 5 2 4 H	DRAIN PLUG	1	1	1	1	1	1	1	1	1	1	1	1		
14	S 7 0 E A 1 6 6 3	WIRE COVER HI-ASSY	1	1	1	1	1	1	1	1	1	1	1	1		
15	S 7 0 0 B 3 2 0 2	ROOM TEMPERATURE THERMISTOR	1	1	1	1	1	1	1	1	1	1	1	1	TH1	220XAP

2

OPTIONAL PARTS

Parts Name	Parts No.
Space panel	PAC-SJ65AS-E
Air outlet shutter plate	PAC-SJ37SP-E
Wired remote controller (MA remote controller)	PAR-41MAA
Wired remote controller (Simple MA remote controller)	PAC-YT52CRA
Wired remote controller	PAR-CT01MAA
Wireless remote controller	PAR-SL101A-E
Power supply terminal kit	PAC-SJ39HR-E
High efficiency filter element	PAC-SH59KF-E
Multi-functional casement	PAC-SJ41TM-E
Casement (Plasma Quad Connect)	PAC-SK51FT-E
Flange for fresh air intake	PAC-SH65OF-E
System control interface	MAC-334IF-E
MA & Contact terminal interface	MAC-397IF-E
Remote sensor	PAC-SE41TS-E
Wi-Fi Interface	MAC-587IF-E
Remote On/Off adapter	PAC-SE55RA-E
Remote operation adapter	PAC-SF40RM-E
Connector cable for remote display	PAC-SA88HA-E
3D Total Flow Unit	PLP-U160ELR-E
INSULATION KIT	PAC-SK36HK-E
Grille (i-see Sensor)	PLP-6EAE PLP-6EAER1
Grille (i-see Sensor with signal receiver)	PLP-6EALE PLP-6EALER1
Grille (i-see Sensor with receiver and wireless remote controller)	PLP-6EALME2
Grille (Standard)	PLP-6EA PLP-6EAR1
Grille (Standard with signal receiver)	PLP-6EAL PLP-6EALR1
Grille (Standard with receiver and wireless remote controller)	PLP-6EALM2
Grille (Automatic filter elevation without i-see Sensor)	PLP-6EAJ
Grille (Automatic filter elevation with i-see Sensor)	PLP-6EAJE
Grille (Black panel)	PLP-6EAB
i-see Sensor corner panel	PAC-SE1ME-E
Signal receiver corner panel	PAR-SE9FA-E

Mr. SLIM

mitsubishi electric corporation

HEAD OFFICE: TOKYO BUILDING, 2-7-3, MARUNOUCHI, CHIYODA-KU, TOKYO 100-8310, JAPAN