

# PARTS CATALOG

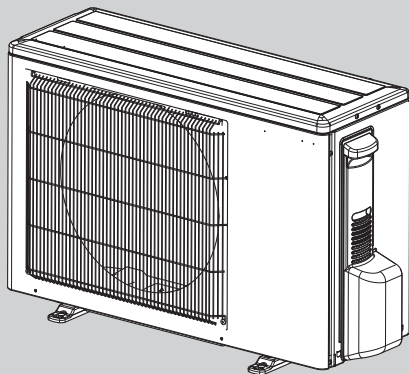
[Model Name]	[Service Ref.]
SUZ-M25VA	SUZ-M25VA.TH SUZ-M25VAR1.TH SUZ-M25VAR2.TH
SUZ-M25VA-ET	SUZ-M25VA-ET.TH SUZ-M25VA-ETR2.TH
SUZ-M25VA-ER SUZ-M35VA	SUZ-M25VA-ERR2.TH SUZ-M35VA.TH SUZ-M35VAR1.TH SUZ-M35VAR2.TH
SUZ-M35VA-ET	SUZ-M35VA-ET.TH SUZ-M35VA-ETR2.TH
SUZ-M35VA-ER SUZ-M50VA	SUZ-M35VA-ERR2.TH SUZ-M50VA.TH SUZ-M50VAR1.TH SUZ-M50VAR2.TH
SUZ-M50VA-ET	SUZ-M50VA-ET.TH SUZ-M50VA-ETR2.TH
SUZ-M50VA-ER SUZ-M60VA	SUZ-M50VA-ERR2.TH SUZ-M60VA.TH SUZ-M60VAR1.TH SUZ-M60VAR2.TH
SUZ-M60VA-ET	SUZ-M60VA-ET.TH SUZ-M60VA-ETR2.TH
SUZ-M60VA-ER SUZ-M71VA	SUZ-M60VA-ERR2.TH SUZ-M71VA.TH SUZ-M71VAR1.TH
SUZ-M71VA-ET	SUZ-M71VA-ET.TH SUZ-M71VA-ETR1.TH
SUZ-M71VA-ER	SUZ-M71VA-ERR1.TH

**R32**

Revision:

- SUZ-M25VA-ERR2.TH,  
SUZ-M35VA-ERR2.TH,  
SUZ-M50VA-ERR2.TH,  
SUZ-M60VA-ERR2.TH and  
SUZ-M71VA-ERR1.TH  
have been added in  
REVISED EDITION-D.

OCB684-C is void.


 SUZ-M25VA.TH  
 SUZ-M35VA.TH

## CONTENTS

1. SERVICE PARTS LIST ..... 2

**SERVICE MANUAL (OCH684)**

# 1

# SERVICE PARTS LIST

## 1-1. OUTDOOR UNIT STRUCTURAL PARTS AND FUNCTIONAL PARTS

SUZ-M25VA.TH

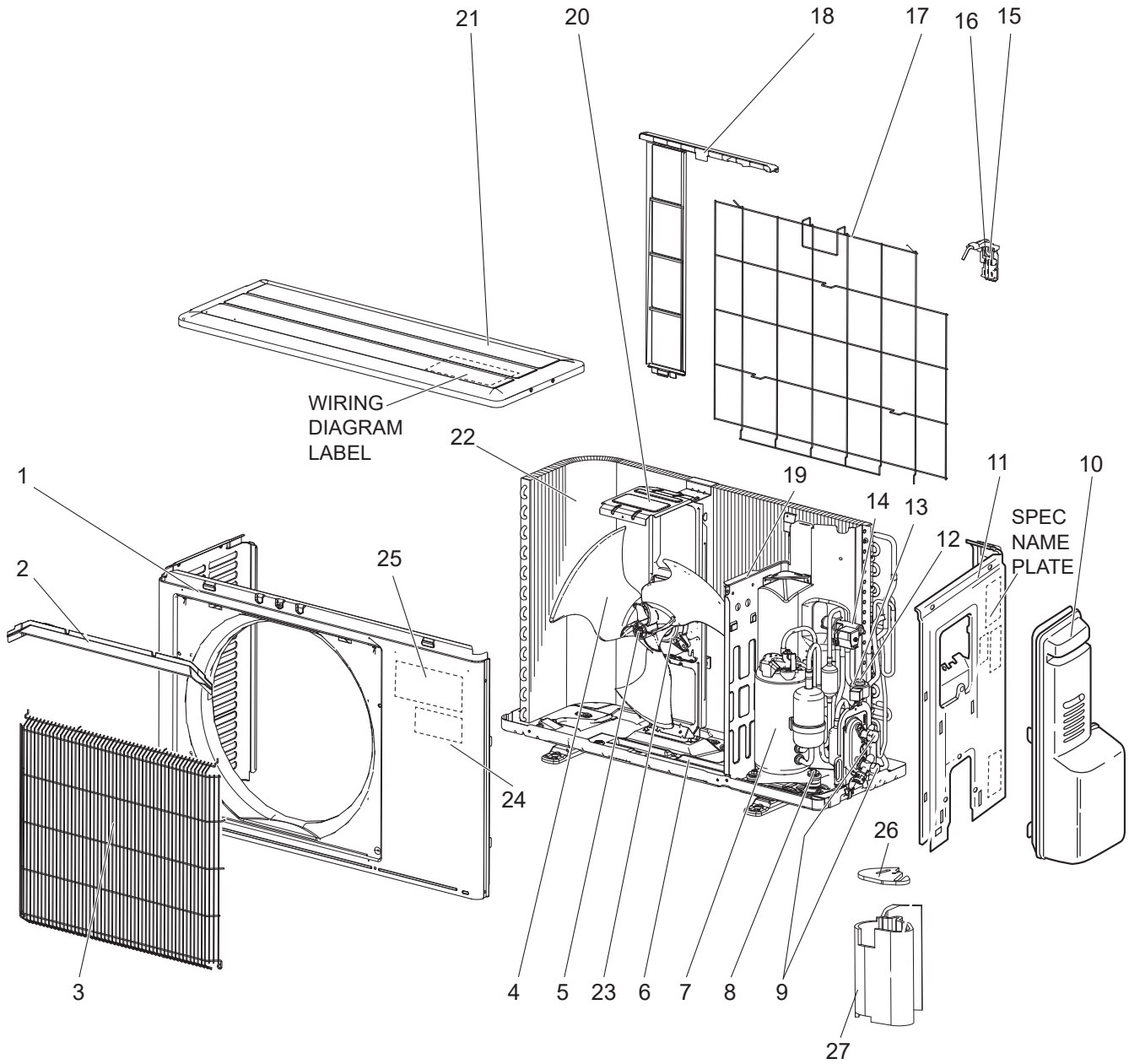
SUZ-M25VAR1.TH

SUZ-M25VAR2.TH

SUZ-M25VA-ET.TH

SUZ-M25VA-ETR2.TH

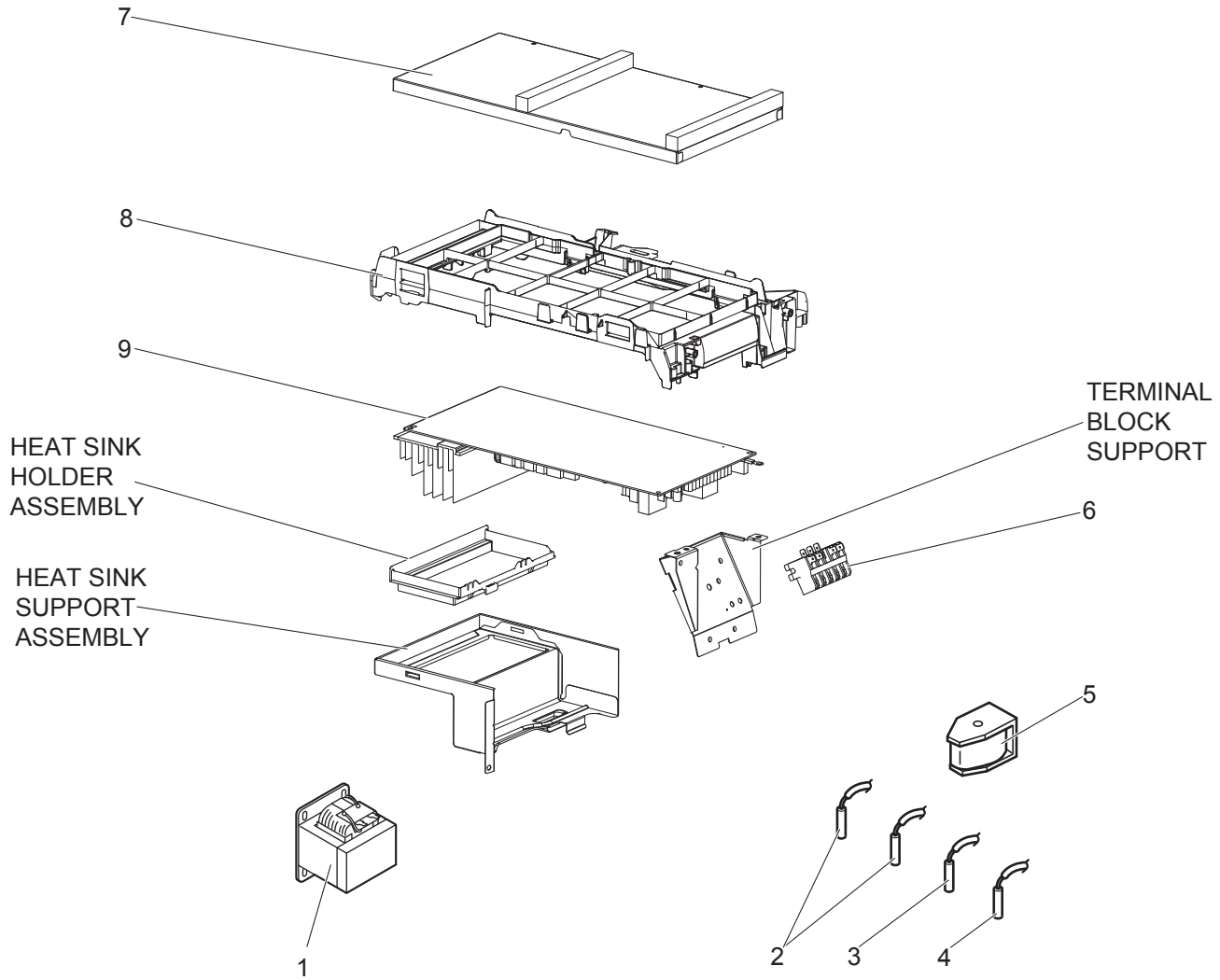
SUZ-M25VA-ERR2.TH



1. The part quantity below indicates the required number of pieces per unit.
2. The circled No. indicates that the part is not shown in the figure.

No.	Part No.			Part Name	SUZ-M25VA.TH	SUZ-M25VAR1.TH	SUZ-M25VAR2.TH	SUZ-M25VA-ET.TH	SUZ-M25VA-ETR2.TH	SUZ-M25VA-ERR2.TH	Symbol Wiring Diagram	Remarks [Drawing No.]
1	E27	M71	232	CABINET	1	1	1	1	1	1		
2	E22	J63	531	ICE GUARD	1	1	1	1	1	1		
3	E22	Y84	521	GRILLE (OUT)	1	1	1	1	1	1		
4	E22	95B	501	PROPELLER FAN	1	1	1	1	1	1		
5	E27	L05	508	PROPELLER FAN NUT	1	1	1	1	1	1		
6	E22	Y84	290	BASE	1	1	1	1	1	1		
7	E22	R81	900	COMPRESSOR	1	1	1	1	1	1	MC	KVB073FYXMC
8	E22	065	506	COMPRESSOR RUBBER MOUNT	3	3	3	3	3	3		3 pcs/SET
9	E27	M71	663	STOP VALVE ASSY	1	1	1	1	1	1		Includes STOP VALVES (LIQ, GAS)
10	E22	L59	245	SERVICE PANEL	1	1	1	1	1	1		
11	E22	G11	233	BACK PANEL (OUT)	1	1	1	1	1	1		
12	E27	M71	645	EXPANSION VALVE ASSY	1	1	1	1	1	1		Includes LEV body, Capillary tube
13	E22	Y87	493	EXPANSION VALVE COIL	1	1	1	1	1	1	LEV	
14	E22	R81	961	4-WAY VALVE	1	1	1	1	1	1		
15	E22	928	079	THERMO HOLDER	1	1	1	1	1	1		For RT65
16	E27	M71	078	THERMO HOLDER COVER	1	1	1	1	1	1		For RT65
17	E27	M71	525	CONDENSER WIRE NET	1	1	1	1	1	1		
18	E22	928	523	CONDENSER NET	1	1	1	1	1	1		
19	E22	G10	293	SEPARATOR	1	1	1	1	1	1		
20	E22	97B	515	MOTOR SUPPORT	1	1	1	1	1	1		
21	E22	L85	297	TOP PANEL	1	1	1	1	1	1		
22	E27	M71	630	OUTDOOR HEAT EXCHANGER	1	1	1	1	1	1		
23	E22	97B	301	OUTDOOR FAN MOTOR	1	1	1	1	1	1	MF	
24	—	—	—	BRAND LABEL	1	1	1	1	1	1		[BT79L209H01]
25	—	—	—	BRAND LABEL	1	1	1	1	1	1		[DK79G041H02]
26	—	—	—	COMP FELT (TOP)	1	1	1	1	1	1		[RK33J744H01]
27	—	—	—	COMP FELT (BODY)	1	1	1	1	1	1		[RK33J460H01]
⑳	—	—	—	COMP FELT (OUTER)	1	1	1	1	1	1		[SG33V226H04]
㉑	—	—	—	LEAD ASSY COMP	1	1	1	1	1	1		[BT78L315G01]
㉒	E22	838	704	DRAIN SOCKET	1	1	1	1	1	1		
㉓	E27	N04	250	T.ST SCREW	19	19	19	19	19	19		

## 1-2. OUTDOOR UNIT ELECTRICAL PARTS



1. The part quantity below indicates the required number of pieces per unit.  
 2. The circled No. indicates that the part is not shown in the figure.

No.	Part No.	Part Name							Symbol Wiring Diagram	Remarks [Drawing No.]
			SUZ-M25VA.TH	SUZ-M25VAR1.TH	SUZ-M25VAR2.TH	SUZ-M25VA-ET.TH	SUZ-M25VA-ETR2.TH	SUZ-M25VA-ERR2.TH		
1	E22 11C 337	REACTOR	1	1	1	1	1	1	L61	
2	E22 C34 306	THERMISTOR SET	1	1	1	1	1	1	RT61, RT62	
3	E22 927 308	THERMISTOR AMBIENT	1	1	1	1	1	1	RT65	
4	E22 M71 307	OUTDOOR H/E TEMP. THERMISTOR	1	1	1	1	1	1	RT68	
5	E22 J47 490	R.V. COIL	1	1	1	1	1	1	21S4	
6	E22 T95 374	TERMINAL BLOCK	1	1	1	1	1	1	TB1	
7	—	PB COVER	1	1	1	1	1	1		[RK00G233G04]
8	—	PB SUPPORT	1	1	1	1	1	1		[RK00A867G01]
9	E27 M71 451	INVERTER P.C. BOARD	1			1				Includes HEAT SINK and RT64
9	E27 R58 451	INVERTER P.C. BOARD		1						Includes HEAT SINK and RT64
9	E27 T84 451	INVERTER P.C. BOARD			1		1			Includes HEAT SINK and RT64
9	E27 80G 451	INVERTER P.C. BOARD						1		Includes HEAT SINK and RT64



**This page is intentionally left blank to make double-page spread.**

### 1-3. OUTDOOR UNIT STRUCTURAL PARTS AND FUNCTIONAL PARTS

SUZ-M35VA.TH

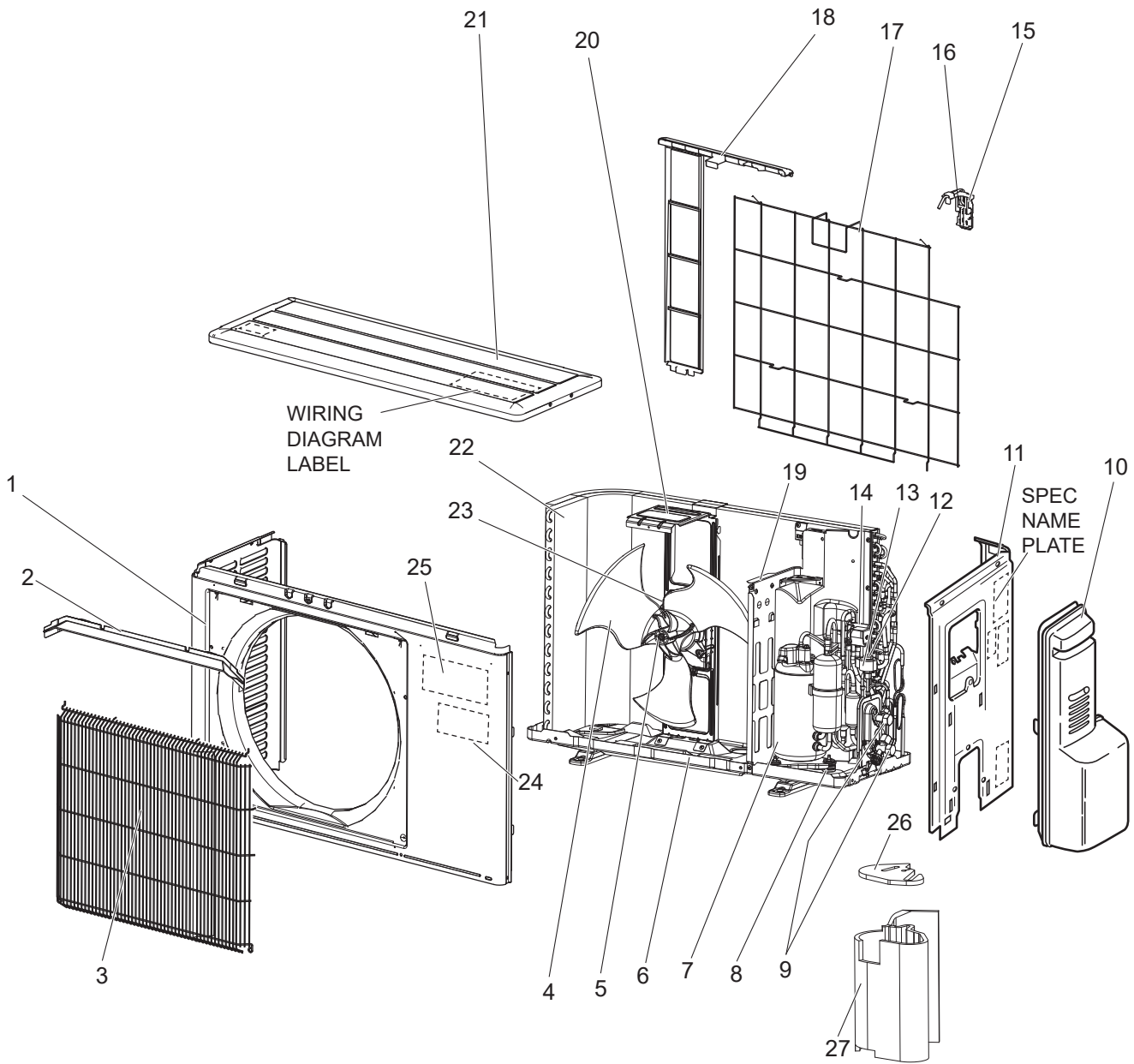
SUZ-M35VAR1.TH

SUZ-M35VAR2.TH

SUZ-M35VA-ET.TH

SUZ-M35VA-ETR2.TH

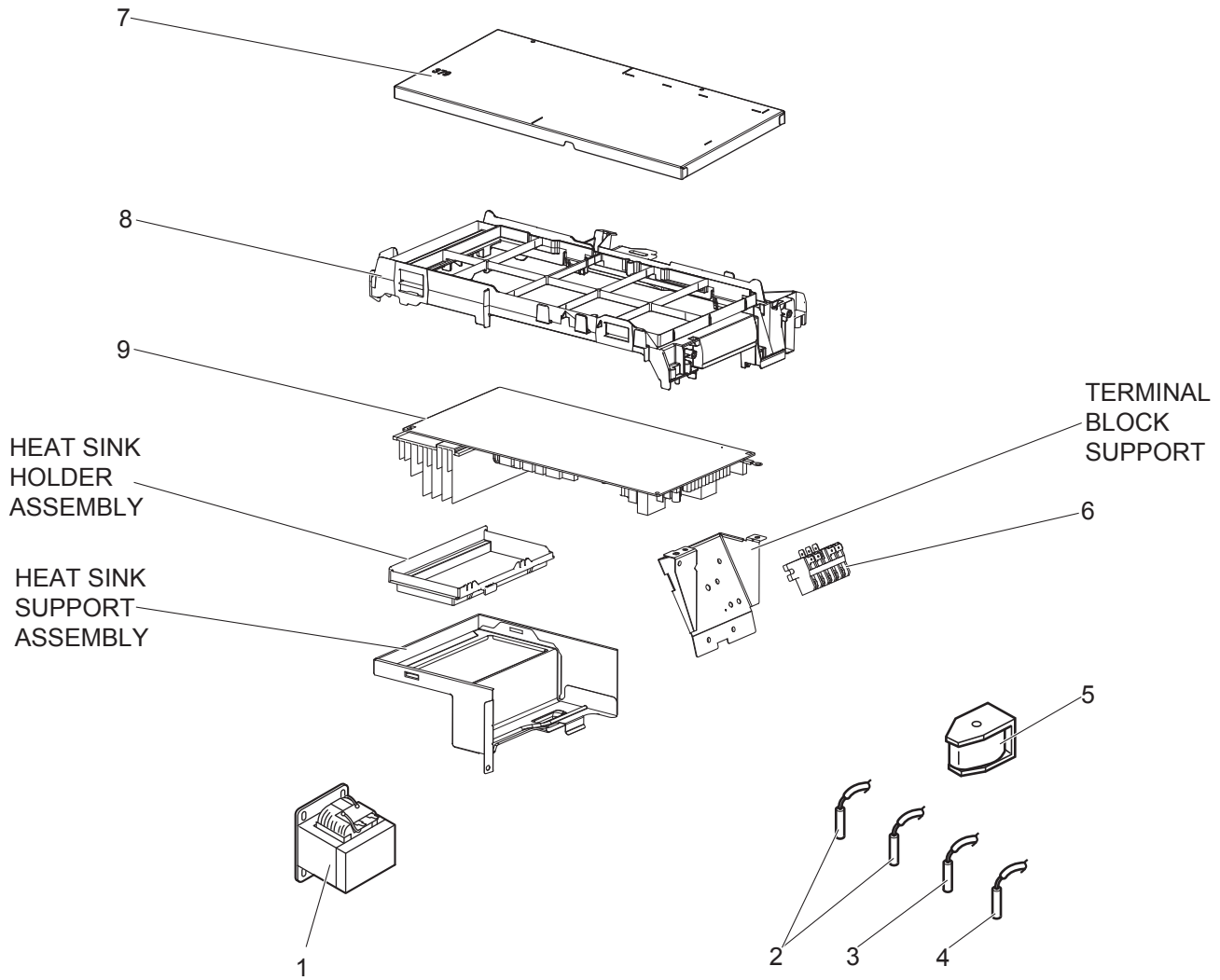
SUZ-M35VA-ERR2.TH



1. The part quantity below indicates the required number of pieces per unit.
2. The circled No. indicates that the part is not shown in the figure.

No.	Part No.			Part Name	SUZ-M35VA.TH	SUZ-M35VAR1.TH	SUZ-M35VAR2.TH	SUZ-M35VA-ET.TH	SUZ-M35VA-ETR2.TH	SUZ-M35VA-ERR2.TH	Symbol Wiring Diagram	Remarks [Drawing No.]
1	E27	M71	232	CABINET	1	1	1	1	1	1		
2	E22	J63	531	ICE GUARD	1	1	1	1	1	1		
3	E22	Y84	521	GRILLE (OUT)	1	1	1	1	1	1		
4	E22	95B	501	PROPELLER FAN	1	1	1	1	1	1		
5	E27	L05	508	PROPELLER FAN NUT	1	1	1	1	1	1		
6	E22	Y84	290	BASE	1	1	1	1	1	1		
7	E22	Y85	900	COMPRESSOR	1	1	1	1	1	1	MC	SVB092FBAMT
8	E22	C34	506	COMPRESSOR RUBBER MOUNT	3	3	3	3	3	3		3 pcs/SET
9	E27	M72	663	STOP VALVE ASSY	1	1	1	1	1	1		Includes STOP VALVES (LIQ, GAS)
10	E22	L59	245	SERVICE PANEL	1	1	1	1	1	1		
11	E22	G15	233	BACK PANEL (OUT)	1	1	1	1	1	1		
12	E27	M72	645	EXPANSION VALVE ASSY	1	1	1	1	1	1		Includes LEV body, Capillary tube
13	E22	Y87	493	EXPANSION VALVE COIL	1	1	1	1	1	1	LEV	
14	E22	R81	961	4-WAY VALVE	1	1	1	1	1	1		
15	E22	930	079	THERMO HOLDER	1	1	1	1	1	1		For RT65
16	E27	M71	078	THERMO HOLDER COVER	1	1	1	1	1	1		For RT65
17	E22	930	525	CONDENSER WIRE NET	1	1	1	1	1	1		
18	E22	930	523	CONDENSER NET	1	1	1	1	1	1		
19	E22	G11	293	SEPARATOR	1	1	1	1	1	1		
20	E22	14F	515	MOTOR SUPPORT	1	1	1	1	1	1		
21	E22	L85	297	TOP PANEL	1	1	1	1	1	1		
22	E27	M72	630	OUTDOOR HEAT EXCHANGER	1	1	1	1	1	1		
23	E22	97B	301	OUTDOOR FAN MOTOR	1	1	1	1	1	1	MF	
24	—	—	—	BRAND LABEL	1	1	1	1	1	1		[BT79L209H01]
25	—	—	—	BRAND LABEL	1	1	1	1	1	1		[DK79G041H02]
26	—	—	—	COMP FELT (TOP)	1	1	1	1	1	1		[RK33J459H01]
27	—	—	—	COMP FELT (BODY)	1	1	1	1	1	1		[RK33J460H01]
28	—	—	—	COMP FELT (OUTER)	1	1	1	1	1	1		[SG33V226H04]
29	—	—	—	LEAD ASSY COMP	1	1	1	1	1	1		[BT78L459G01]
30	E22	838	704	DRAIN SOCKET	1	1	1	1	1	1		
31	E27	N04	250	T.ST SCREW	19	19	19	19	19	19		

## 1-4. OUTDOOR UNIT ELECTRICAL PARTS



1. The part quantity below indicates the required number of pieces per unit.
2. The circled No. indicates that the part is not shown in the figure.

No.	Part No.	Part Name	SUZ-M35VA.TH	SUZ-M35VAR1.TH	SUZ-M35VAR2.TH	SUZ-M35VA-ET.TH	SUZ-M35VA-ETR2.TH	SUZ-M35VA-ERR2.TH	Symbol Wiring Diagram	Remarks [Drawing No.]
1	E22 G11 337	REACTOR	1	1	1	1	1	1	L61	
2	E22 C34 306	THERMISTOR SET	1	1	1	1	1	1	RT61, RT62	
3	E22 927 308	THERMISTOR AMBIENT	1	1	1	1	1	1	RT65	
4	E22 C34 307	OUTDOOR H/E TEMP. THERMISTOR	1	1	1	1	1	1	RT68	
5	E22 J47 490	R.V. COIL	1	1	1	1	1	1	21S4	
6	E22 T95 374	TERMINAL BLOCK	1	1	1	1	1	1	TB1	
7	—	PB COVER	1	1	1	1	1	1		[RK00G233G04]
8	—	PB SUPPORT	1	1	1	1	1	1		[RK00A867G01]
9	E27 M72 451	INVERTER P.C. BOARD	1			1				Includes HEAT SINK and RT64
9	E27 R59 451	INVERTER P.C. BOARD		1						Includes HEAT SINK and RT64
9	E27 T85 451	INVERTER P.C. BOARD			1		1			Includes HEAT SINK and RT64
9	E27 81G 451	INVERTER P.C. BOARD						1		Includes HEAT SINK and RT64





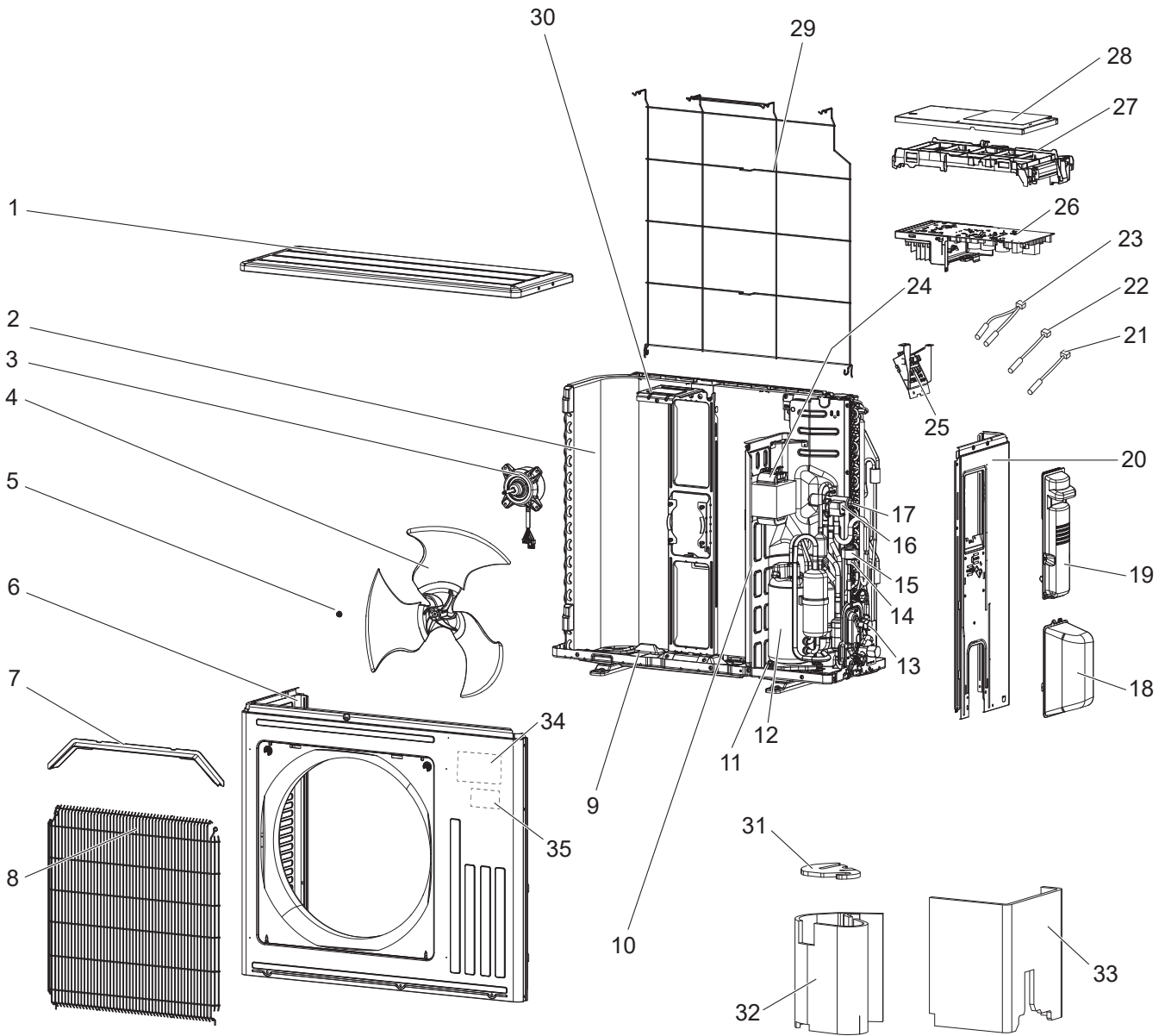
**This page is intentionally left blank to make double-page spread.**

# 1-5. OUTDOOR UNIT STRUCTURAL PARTS, ELECTRICAL PARTS AND FUNCTIONAL PARTS

SUZ-M50VA.TH  
SUZ-M50VA-ET.TH

SUZ-M50VAR1.TH  
SUZ-M50VA-ETR2.TH

SUZ-M50VAR2.TH  
SUZ-M50VA-ERR2.TH



1. The part quantity below indicates the required number of pieces per unit.
2. The circled No. indicates that the part is not shown in the figure.

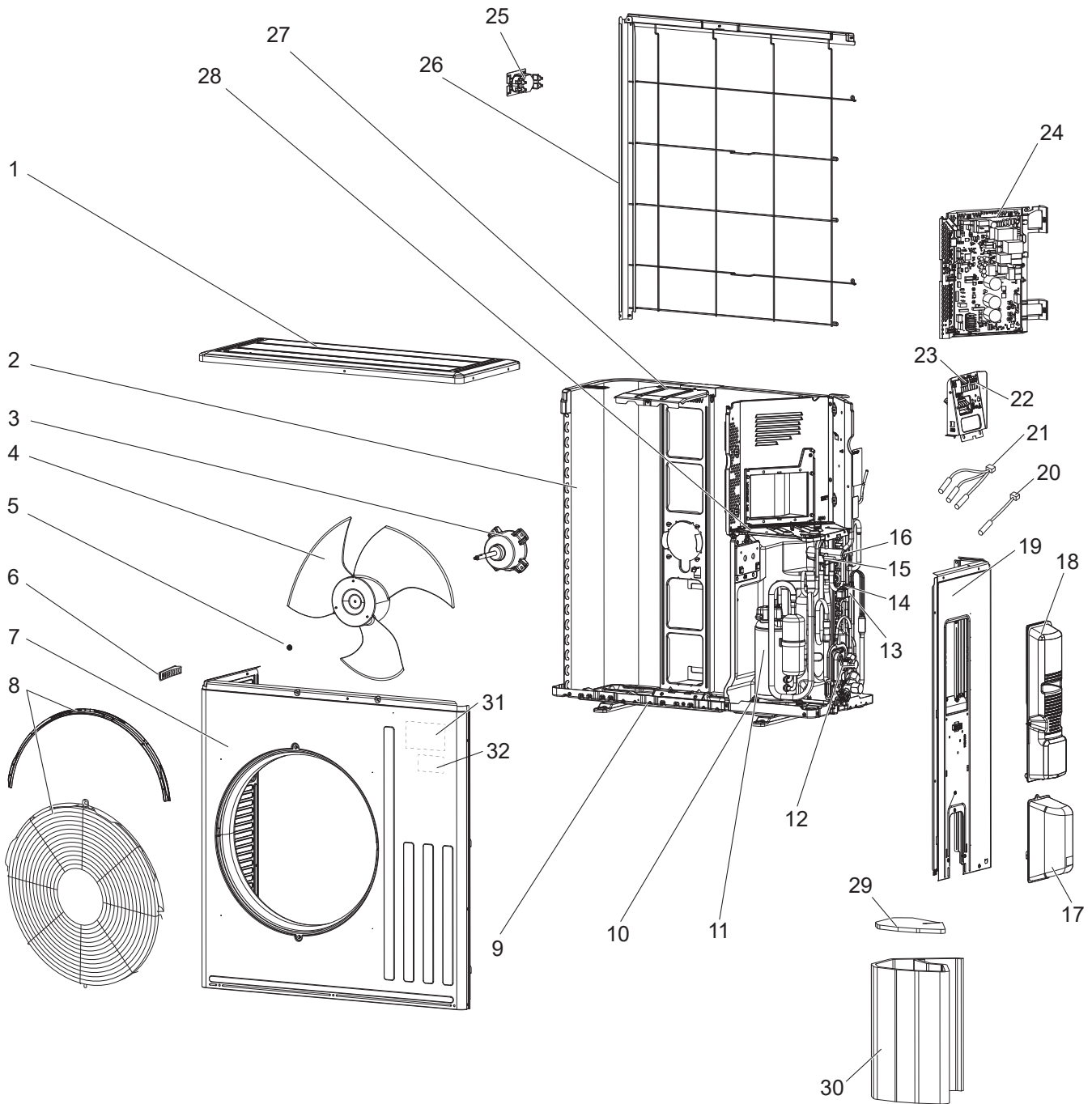
No.	Part No.	Part Name	SUZ-M50VA.TH	SUZ-M50VAR1.TH	SUZ-M50VAR2.TH	SUZ-M50VA-ET.TH	SUZ-M50VA-ETR2.TH	SUZ-M50VA-ERR2.TH	Symbol Wiring Diagram	Remarks [Drawing No.]
1	E22 Y86 297	TOP PANEL	1	1	1	1	1	1		
2	E22 Y86 630	OUTDOOR HEAT EXCHANGER	1	1	1	1	1	1		
3	E22 Y86 301	OUTDOOR FAN MOTOR	1	1	1	1	1	1	MF	
4	E22 Y86 501	PROPELLER FAN	1	1	1	1	1	1		
5	E27 L05 508	PROPELLER FAN NUT	1	1	1	1	1	1		
6	E22 Y86 232	CABINET	1	1	1	1	1	1		
7	E22 Y86 531	ICE GUARD	1	1	1	1	1	1		
8	E22 Y86 521	GRILLE (OUT)	1	1	1	1	1	1		
9	E22 Y84 290	BASE	1	1	1	1	1	1		
10	E22 Y86 293	SEPARATOR	1	1	1	1	1	1		
11	E22 C34 506	COMPRESSOR RUBBER MOUNT	3	3	3	3	3	3		3 pcs/set
12	E22 R83 900	COMPRESSOR	1	1	1	1	1	1	MC	SVB130FBBMT
13	E27 M73 663	STOP VALVE ASSY	1	1	1	1	1	1		Includes STOP VALVES (LIQ, GAS)
14	E22 41G 645	EXPANSION VALVE ASSY	1	1	1	1	1	1		Includes LEV body, Capillary tube
15	E22 Y84 493	EXPANSION VALVE COIL	1	1	1	1	1	1	LEV	
16	E22 Y86 490	R.V. COIL	1	1	1	1	1	1	21S4	
17	E22 J44 961	4-WAY VALVE	1	1	1	1	1	1		
18	E22 Y86 650	VALVE COVER	1	1	1	1	1	1		
19	E22 Y86 245	SERVICE PANEL	1	1	1	1	1	1		
20	E22 Y86 233	BACK PANEL (OUT)	1	1	1	1	1	1		
21	E22 Y86 309	AMBIENT TEMP. THERMISTOR	1	1	1	1	1	1	RT65	
22	E22 C34 307	OUTDOOR H/E TEMP. THERMISTOR	1	1	1	1	1	1	RT68	
23	E22 Y86 306	THERMISTOR SET	1	1	1	1	1	1	RT61, RT62	
24	E22 H21 337	REACTOR	1	1	1	1	1	1	L61	
25	E22 T95 374	TERMINAL BLOCK	1	1	1	1	1	1	TB1	
26	E27 M73 451	INVERTER P.C. BOARD	1			1				Includes heat sink and RT64
26	E27 R60 451	INVERTER P.C. BOARD		1						Includes heat sink and RT64
26	E27 T86 451	INVERTER P.C. BOARD			1		1			Includes heat sink and RT64
26	E27 82G 451	INVERTER P.C. BOARD						1		Includes heat sink and RT64
27	—	PB SUPPORT	1	1	1	1	1	1		[RK00A627G01]
28	—	PB COVER	1	1	1	1	1	1		[RK00G233G04]
29	E22 Y86 525	CONDENSER WIRE NET	1	1	1	1	1	1		
30	E22 Y86 515	MOTOR SUPPORT	1	1	1	1	1	1		
31	—	COMP FELT(TOP)	1	1	1	1	1	1		[RK33J826H02]
32	—	COMP FELT(BODY)	1	1	1	1	1	1		[RK33J823H01]
33	—	COMP FELT(OUTER)	1	1	1	1	1	1		[SG33V226H04]
34	—	BRAND LABEL	1	1	1	1	1	1		[DK79G041H02]
35	—	BRAND LABEL	1	1	1	1	1	1		[BT79L209H01]
36	E22 838 704	DRAIN SOCKET	1	1		1		1		
36	—	DRAIN SOCKET			1		1			[SG25J835G01]
37	—	LEAD ASSY COMP	1	1	1	1	1	1		[BT78L235G01]
38	E27 N04 250	T.ST SCREW	27	27	27	27	27	27		



### 1-6. OUTDOOR UNIT STRUCTURAL PARTS, ELECTRICAL PARTS AND FUNCTIONAL PARTS

SUZ-M60VA.TH  
SUZ-M60VAR1.TH  
SUZ-M60VAR2.TH  
SUZ-M60VA-ET.TH  
SUZ-M60VA-ETR2.TH  
SUZ-M60VA-ERR2.TH

SUZ-M71VA.TH  
SUZ-M71VAR1.TH  
SUZ-M71VA-ET.TH  
SUZ-M71VA-ETR1.TH  
SUZ-M71VA-ERR1.TH



1. The part quantity below indicates the required number of pieces per unit.
2. The circled No. indicates that the part is not shown in the figure.

No.	Part No.			Part Name	SUZ-M60VA.TH	SUZ-M60VAR1.TH	SUZ-M60VAR2.TH	SUZ-M60VA-ET.TH	SUZ-M60VA-ETR2.TH	SUZ-M60VA-ERR2.TH	SUZ-M71VA.TH	SUZ-M71VAR1.TH	SUZ-M71VA-ET.TH	SUZ-M71VA-ETR1.TH	SUZ-M71VA-ERR1.TH	Symbol in Wiring Diagram	Remarks [Drawing No.]
					1	1	1	1	1	1	1	1	1	1	1		
1	E27	L07	297	TOP PANEL	1	1	1	1	1	1	1	1	1	1	1		
2	E27	M74	630	OUTDOOR HEAT EXCHANGER	1	1	1	1	1	1	1	1	1	1	1		
3	E22	F28	301	OUTDOOR FAN MOTOR	1	1	1			1	1		1			MF	
4	E22	F28	501	PROPELLER FAN	1	1	1	1	1	1	1	1	1	1	1		
5	E27	L05	508	PROPELLER FAN NUT	1	1	1	1	1	1	1	1	1	1	1		
6	E22	817	009	HANDLE	1	1	1	1	1	1	1	1	1	1	1		
7	E22	R13	232	CABINET	1	1	1	1	1	1	1	1	1	1	1		
8	E22	Y87	521	FAN GUARD	1	1	1	1	1	1	1	1	1	1	1		
9	E22	F28	290	BASE	1	1	1	1	1	1	1	1	1	1	1		
10	E22	C34	506	COMPRESSOR RUBBER MOUNT	3	3	3	3	3	3	3	3	3	3	3		3pcs/set
11	E22	R83	900	COMPRESSOR	1	1	1	1	1	1						MC	SVB130FBBMT
11	E22	R86	900	COMPRESSOR							1	1	1	1	1	MC	SVB172FCKMT
12	E27	M74	663	STOP VALVE ASSY	1	1	1	1	1	1							Includes STOP VALVES(LIQ, GAS)
12	E27	M75	663	STOP VALVE ASSY							1	1	1	1	1		Includes STOP VALVES(LIQ, GAS)
13	E27	M74	645	EXPANSION VALVE ASSY	1	1	1	1	1	1	1	1	1	1	1		Includes LEV body, Capillary tube
14	E27	M74	493	EXPANSION VALVE COIL	1	1	1	1	1	1	1	1	1	1	1	LEV	
15	E22	R84	490	R.V. COIL	1	1	1	1	1	1	1	1	1	1	1	21S4	
16	E22	J44	961	4-WAY VALVE	1	1	1	1	1	1	1	1	1	1	1		
17	E22	F28	650	VALVE COVER	1	1	1	1	1	1	1	1	1	1	1		
18	E22	Y87	245	SERVICE PANEL	1	1	1	1	1	1	1	1	1	1	1		
19	E22	F28	233	BACK PANEL(OUT)	1	1	1	1	1	1	1	1	1	1	1		
20	E22	29F	309	AMBIENT TEMP. THERMISTOR	1	1	1	1	1	1	1	1	1	1	1	RT65	
21	E22	R84	308	THERMISTOR SET	1	1	1	1	1	1	1	1	1	1	1	RT61, RT62, RT68	
22	E22	F29	374	TERMINAL BLOCK	1	1	1	1	1	1	1	1	1	1	1	TB1	
23	E22	T16	374	TERMINAL BLOCK	1	1	1	1	1	1	1	1	1	1	1	TB2	
24	E27	M74	451	INVERTER P.C. BOARD	1			1									Includes HEAT SINK and RT64
24	E27	R61	451	INVERTER P.C. BOARD		1											Includes HEAT SINK and RT64
24	E27	M75	451	INVERTER P.C. BOARD							1	1					Includes HEAT SINK and RT64
24	E27	T87	451	INVERTER P.C. BOARD			1	1									Includes HEAT SINK and RT64
24	E27	T88	451	INVERTER P.C. BOARD							1	1					Includes HEAT SINK and RT64
24	E27	83G	451	INVERTER P.C. BOARD					1								
24	E27	84G	451	INVERTER P.C. BOARD											1		
25	E22	R84	337	REACTOR	1	1	1	1	1	1	1	1	1	1	1	L	
26	E22	L87	523	CONDENSER NET	1	1	1	1	1	1	1	1	1	1	1		
27	E22	F28	515	MOTOR SUPPORT	1	1	1	1	1	1	1	1	1	1	1		
28	E27	M60	293	SEPARATOR	1	1	1	1	1	1	1	1	1	1	1		
29	—	—	—	COMP FELT(TOP)	1	1	1	1	1	1	1	1	1	1	1		[RK33J795H01]
30	—	—	—	COMP FELT(BODY)	1	1	1	1	1	1	1	1	1	1	1		[RK33J456H01]
31	—	—	—	BRAND LABEL	1	1	1	1	1	1	1	1	1	1	1		[DK79G041H02]
32	—	—	—	BRAND LABEL	1	1	1	1	1	1	1	1	1	1	1		[BT79L209H01]
33	—	—	—	ELECTRICAL PARTS BOX	1	1	1	1	1	1	1	1	1	1	1		[SQ00J359G18]
34	—	—	—	LEAD ASSY COMP	1	1	1	1	1	1	1	1	1	1	1		[BT78L236G01]
35	E22	F28	704	DRAIN SOCKET	1	1	1	1	1	1	1	1	1	1	1		
35	—	—	—	DRAIN SOCKET			1	1			1	1					[DK25B427G08]
36	E27	N04	250	T.ST SCREW	30	30	30	30	30	30	30	30	30	30	30		

**Mr. SLIM**

**mitsubishi electric corporation**

HEAD OFFICE: TOKYO BUILDING., 2-7-3, MARUNOUCHI, CHIYODA-KU, TOKYO100-8310, JAPAN

©Copyright 2018 MITSUBISHI ELECTRIC CORPORATION  
Issued: Oct. 2021 No. OCB684 REVISED EDITION-D  
Issued: Jan. 2020 No. OCB684 REVISED EDITION-C  
Issued: Jun. 2019 No. OCB684 REVISED EDITION-B  
Issued: Jan. 2019 No. OCB684 REVISED EDITION-A  
Published: Dec. 2018 No. OCB684  
Made in Japan

Specifications are subject to change without notice.