

**PARTS CATALOG**
**R32**
**No.OCB773  
REVISED EDITION-A**
**Outdoor unit  
[Model Name]**

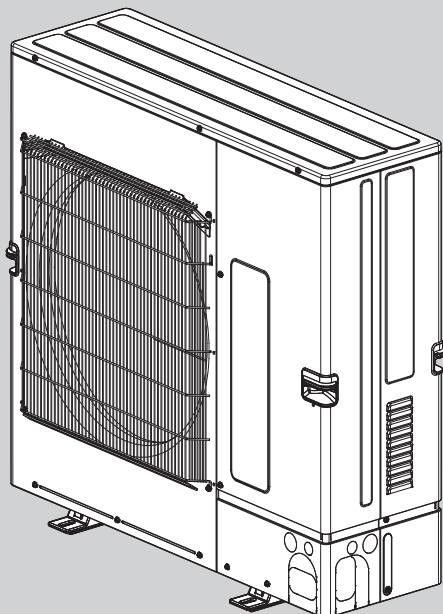
PUZ-M100VKA2  
 PUZ-M100VKA2-ET  
 PUZ-M100VKA2-ER  
 PUZ-M125VKA2  
 PUZ-M125VKA2-ET  
 PUZ-M125VKA2-ER  
 PUZ-M140VKA2  
 PUZ-M140VKA2-ET  
 PUZ-M140VKA2-ER  
 PUZ-M100YKA2  
 PUZ-M100YKA2-ET  
 PUZ-M100YKA2-ER  
 PUZ-M125YKA2  
 PUZ-M125YKA2-ET  
 PUZ-M125YKA2-ER  
 PUZ-M140YKA2  
 PUZ-M140YKA2-ET  
 PUZ-M140YKA2-ER

**[Service Ref.]**

PUZ-M100VKA2.TH  
 PUZ-M100VKA2-ET.TH  
 PUZ-M100VKA2-ER.TH  
 PUZ-M125VKA2.TH  
 PUZ-M125VKA2-ET.TH  
 PUZ-M125VKA2-ER.TH  
 PUZ-M140VKA2.TH  
 PUZ-M140VKA2-ET.TH  
 PUZ-M140VKA2-ER.TH  
 PUZ-M100YKA2.TH  
 PUZ-M100YKA2-ET.TH  
 PUZ-M100YKA2-ER.TH  
 PUZ-M125YKA2.TH  
 PUZ-M125YKA2-ET.TH  
 PUZ-M125YKA2-ER.TH  
 PUZ-M140YKA2.TH  
 PUZ-M140YKA2-ET.TH  
 PUZ-M140YKA2-ER.TH

Revision:  
 • Parts catalog has been  
 updated in  
 REVISED EDITION-A.

OCB773 is void.

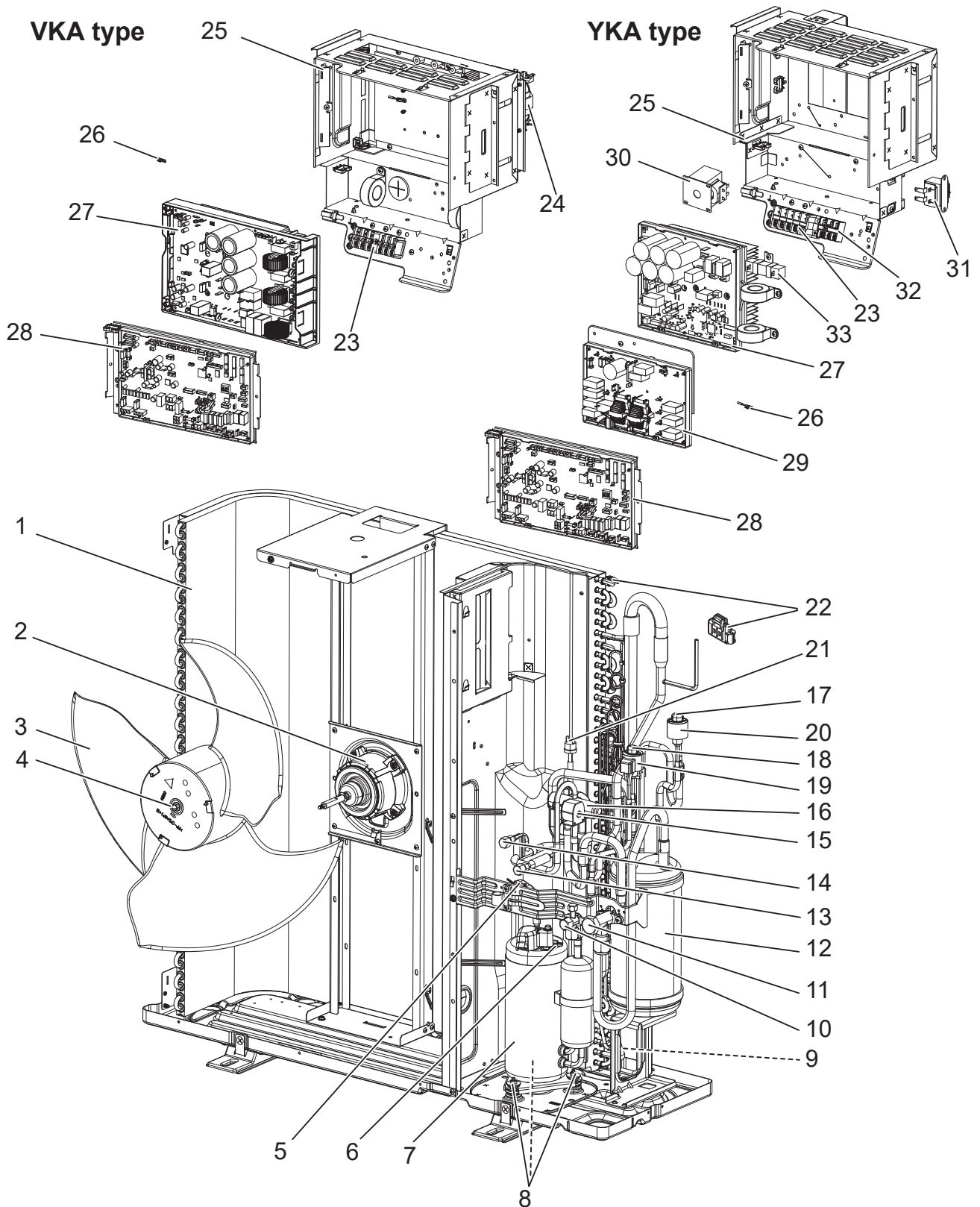

**CONTENTS**

1. SERVICE PARTS LIST ..... 2

**SERVICE MANUAL (OCH773)**


**FUNCTIONAL AND ELECTRICAL PARTS**

PUZ-M100VKA2.TH  
 PUZ-M100VKA2-ET.TH  
 PUZ-M100VKA2-ER.TH  
 PUZ-M100YKA2.TH  
 PUZ-M100YKA2-ET.TH  
 PUZ-M100YKA2-ER.TH



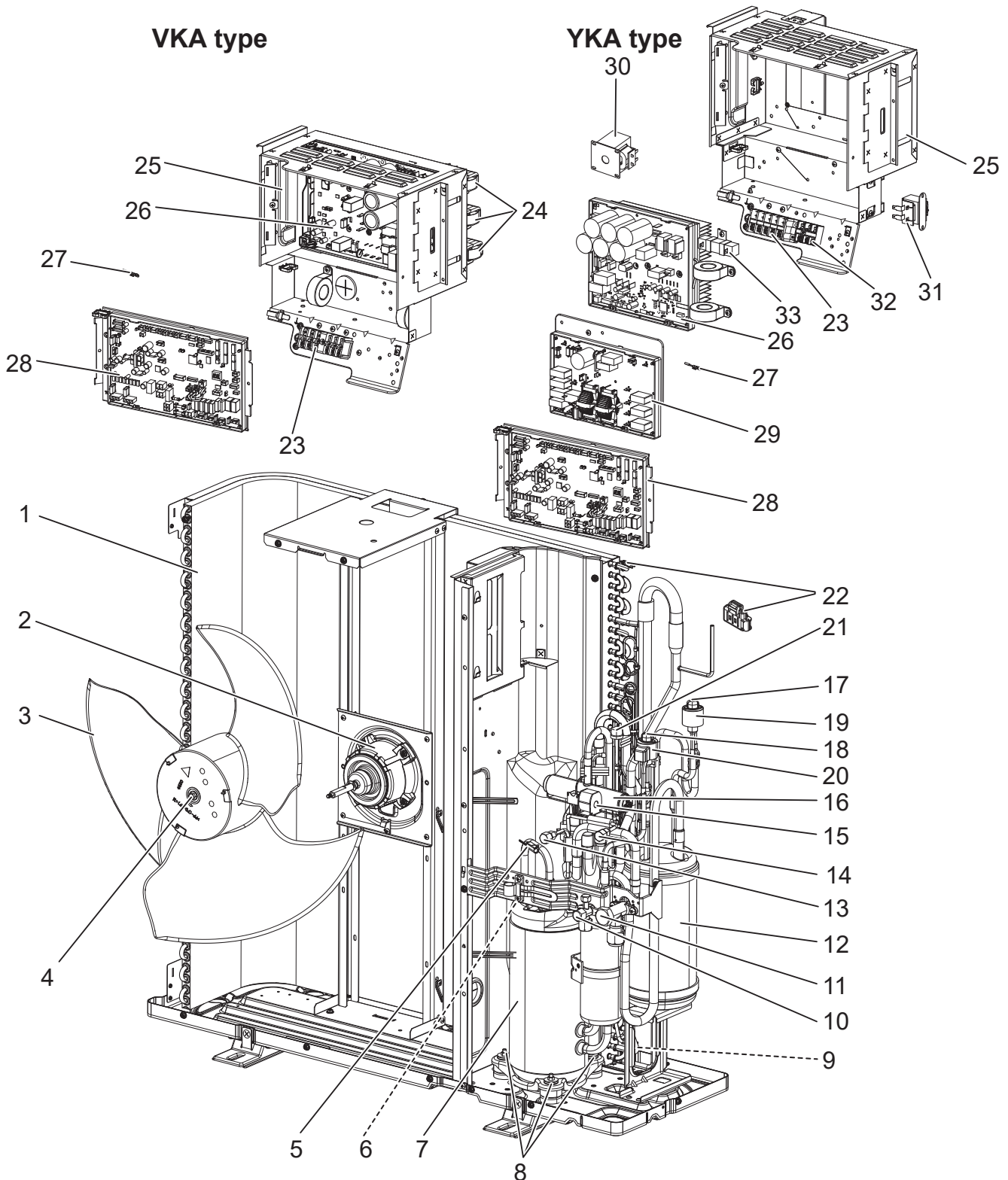
1. The part quantity below indicates the required number of pieces per unit.
2. The circled No. indicates that the part is not shown in the figure

No.	Part No.	Part Name	PUZ-M100VKA2.TH	PUZ-M100YKA2-ET.TH	PUZ-M100YKA2-ER.TH	PUZ-M100YKA2.TH	PUZ-M100YKA2-ET.TH	PUZ-M100YKA2-ER.TH	Wiring Diagram Symbol	Remarks [Drawing No.]
1	E27 J26 630	OUTDOOR HEAT EXCHANGER	1	1	1	1	1	1		
2	E27 F03 301	OUTDOOR FAN MOTOR	1	1	1	1	1	1	MF	
3	E27 942 501	PROPELLER FAN	1	1	1	1	1	1		1PC/SET
4	E27 A15 508	PROPELLER FAN NUT	1	1	1	1	1	1		
5	E27 E34 307	THERMISTOR	1	1	1	1	1	1	TH4	
6	E27 E33 307	THERMISTOR	1	1	1	1	1	1	TH33	
7	E27 N51 900	COMPRESSOR SVB220FBGMT	1	1	1				MC	SVB220FBGMT
7	E27 M96 900	COMPRESSOR SVB220FBAMT				1	1	1	MC	SVB220FBAMT
8	E22 C34 506	COMPRESSOR RUBBER MOUNT	3	3	3	3	3	3		3PCS/SET
9	E27 944 307	THERMISTOR	1	1	1	1	1	1	TH3	
10	E27 942 661	STOP VALVE 3/8F	1	1	1	1	1	1		
11	E27 E33 661	STOP VALVE 5/8F	1	1	1	1	1	1		
12	E27 M96 959	POWER RECEIVER	1	1	1	1	1	1		
13	E27 942 641	CHARGE PLUG	1	1	1	1	1	1		
14	E27 943 641	CHARGE PLUG	1	1	1	1	1	1		
15	E27 P05 490	R.V. COIL	1	1	1	1	1	1		21S4
16	E22 J61 961	4-WAY VALVE	1	1	1	1	1	1		
17	E27 M96 645	EXPANSION VALVE ASSY A	1	1	1	1	1	1		
18	E27 M97 645	EXPANSION VALVE ASSY B	1	1	1	1	1	1		
19	E27 J27 493	LINEAR EXPANSION VALVE COIL	1	1	1	1	1	1	LEV-B	RD
20	E27 J26 493	LINEAR EXPANSION VALVE COIL	1	1	1	1	1	1	LEV-A	WH
21	E27 942 646	HIGH PRESSURE SWITCH	1	1	1	1	1	1		
22	E27 J26 307	THERMISTOR-W	1	1	1	1	1	1	TH6, 7	
23	E27 E45 374	TERMINAL BLOCK	1	1	1				TB1	
23	E27 943 374	TERMINAL BLOCK				1	1	1	TB1	
24	E27 J26 337	REACTOR	1	1	1				DCL	
25	—	ELECTRICAL BOX	1	1	1					[BK00N051G55]
25	—	ELECTRICAL BOX				1	1	1		[BK00N051G57]
26	E27 E45 307	THERMISTOR	1	1	1				TH8	
26	E27 E35 307	THERMISTOR				1	1	1	TH8	
27	E27 W87 440	POWER BOARD	1	1	1				P.B.	
27	E27 74F 440	POWER BOARD				1	1	1	P.B.	
28	E27 74F 450	OUTDOOR CONTROLLER P.C. BOARD	1	1	1	1	1	1	C.B.	
29	E27 H96 444	NOISE FILTER P.C. BOARD				1	1	1	N.F.	
30	E27 74F 337	REACTOR				1	1	1	DCL	
31	E27 75F 337	REACTOR				1	1	1	ACL4	
32	E22 C92 375	TERMINAL BLOCK				1	1	1	TB2	
33	E27 E33 360	RESISTOR				1	1	1	RS	
34	E27 74F 382	FUSE (T10AL 250V)	2	2	2	2	2	2	F1, F2	
35	E27 648 382	FUSE (T6.3AL 250V)	2	2	2	2	2	2	F3, F4	
36	—	SENSOR HOLDER	1	1	1	1	1	1		[BK25N082G05]
37	—	BOARD CASE POWER	1	1	1					[RK00C783G02]
37	—	BOARD CASE POWER				1	1	1		[BK25N048G03]
38	—	BOARD CASE CONT	1	1	1	1	1	1		[RK25N611G01]
39	—	BOARD CASE NF				1	1	1		[BK25N049G04]
40	—	HEAT SINK	1	1	1					[BK11N530H02]
40	—	HEAT SINK				1	1	1		[BK11J826H03]
41	—	LEAD ASSY COMP	1	1	1					[RG78F385G03]
41	—	LEAD ASSY COMP				1	1	1		[RG78F200G01]
42	—	COMP FELT (TOP)	1	1	1	1	1	1		[RK33G130H03]
43	—	COMP FELT (BODY)	1	1	1	1	1	1		[RK33B247H04]
44	E27 L67 530	HEX TOP CUSHION SET	1	1	1	1	1	1		

## FUNCTIONAL AND ELECTRICAL PARTS

PUZ-M125VKA2.TH  
 PUZ-M125VKA2-ET.TH  
 PUZ-M125VKA2-ER.TH  
 PUZ-M140VKA2.TH  
 PUZ-M140VKA2-ET.TH  
 PUZ-M140VKA2-ER.TH

PUZ-M125YKA2.TH  
 PUZ-M125YKA2-ET.TH  
 PUZ-M125YKA2-ER.TH  
 PUZ-M140YKA2.TH  
 PUZ-M140YKA2-ET.TH  
 PUZ-M140YKA2-ER.TH



1. The part quantity below indicates the required number of pieces per unit.
2. The circled No. indicates that the part is not shown in the figure

No.	Part No.	Part Name	PUZ-M125YKA2-TH	PUZ-M125YKA2-ET-TH	PUZ-M125YKA2-ER-TH	PUZ-M140YKA2-TH	PUZ-M140YKA2-ET-TH	PUZ-M140YKA2-ER-TH	PUZ-M125YKA2-TH	PUZ-M125YKA2-ET-TH	PUZ-M125YKA2-ER-TH	PUZ-M140YKA2-TH	PUZ-M140YKA2-ET-TH	PUZ-M140YKA2-ER-TH	Wiring Diagram Symbol	Remarks [Drawing No.]
1	E 27 J 26 630	OUTDOOR HEAT EXCHANGER	1	1	1	1	1	1	1	1	1	1	1	1		
2	E 27 F 03 301	OUTDOOR FAN MOTOR	1	1	1	1	1	1	1	1	1	1	1	1	MF	
3	E 27 9 42 501	PROPELLER FAN	1	1	1	1	1	1	1	1	1	1	1	1		1PC/SET
4	E 27 A 15 508	PROPELLER FAN NUT	1	1	1	1	1	1	1	1	1	1	1	1		
5	E 27 E 34 307	THERMISTOR	1	1	1	1	1	1	1	1	1	1	1	1	TH4	
6	E 27 E 33 307	THERMISTOR	1	1	1	1	1	1	1	1	1	1	1	1	TH33	
7	E 27 M 97 900	COMPRESSOR MVB33FBVMC	1	1	1	1	1	1	1	1	1	1	1	1	MC	MVB33FBVMC
8	E 22 2 67 506	COMPRESSOR RUBBER MOUNT	3	3	3	3	3	3	3	3	3	3	3	3		3PCS/SET
9	E 27 9 44 307	THERMISTOR	1	1	1	1	1	1	1	1	1	1	1	1	TH3	
10	E 27 9 42 661	STOP VALVE 3/8F	1	1	1	1	1	1	1	1	1	1	1	1		
11	E 27 E 33 661	STOP VALVE 5/8F	1	1	1	1	1	1	1	1	1	1	1	1		
12	E 27 M 96 959	POWER RECEIVER	1	1	1	1	1	1	1	1	1	1	1	1		
13	E 27 9 42 641	CHARGE PLUG	1	1	1	1	1	1	1	1	1	1	1	1		
14	E 27 9 42 641	CHARGE PLUG	1	1	1	1	1	1	1	1	1	1	1	1		
15	E 27 P 05 490	R.V. COIL	1	1	1	1	1	1	1	1	1	1	1	1		21S4
16	E 27 M 97 961	4-WAY VALVE	1	1	1	1	1	1	1	1	1	1	1	1		
17	E 27 M 96 645	EXPANSION VALVE ASSY A	1	1	1	1	1	1	1	1	1	1	1	1		
18	E 27 M 97 645	EXPANSION VALVE ASSY B	1	1	1	1	1	1	1	1	1	1	1	1		
19	E 27 J 26 493	LEV COIL	1	1	1	1	1	1	1	1	1	1	1	1	LEV-A	WH
20	E 27 J 27 493	LEV COIL	1	1	1	1	1	1	1	1	1	1	1	1	LEV-B	RD
21	E 27 9 42 646	HIGH PRESSURE SWITCH	1	1	1	1	1	1	1	1	1	1	1	1		
22	E 27 J 26 307	THERMISTOR-W	1	1	1	1	1	1	1	1	1	1	1	1	TH6, 7	
23	E 27 E 45 374	TERMINAL BLOCK	1	1	1	1	1	1							TB1	
23	E 27 9 43 374	TERMINAL BLOCK							1	1	1	1	1	1	TB1	
24	E 27 E 45 337	REACTOR	3	3	3	3	3	3							DCL1, DCL2, DCL3	3PCS/SET
25	—	ELECTRICAL PARTS BOX	1	1	1	1	1	1								[BK00N051G56]
25	—	ELECTRICAL PARTS BOX							1	1	1	1	1	1		[BK00N051G57]
26	E 27 W 88 440	POWER BOARD	1	1	1	1	1	1							P.B.	
26	E 27 7 5F 440	POWER BOARD							1	1	1	1	1	1	P.B.	
27	E 27 E 45 307	THERMISTOR	1	1	1	1	1	1							TH8	
27	E 27 E 35 307	THERMISTOR							1	1	1	1	1	1	TH8	
28	E 27 7 4F 450	OUTDOOR CONTROLLER P.C. BOARD	1	1	1	1	1	1	1	1	1	1	1	1	C.B.	
29	E 27 H 96 444	NOISE FILTER P.C. BOARD							1	1	1	1	1	1	N.F.	
30	E 27 7 4F 337	REACTOR							1	1	1	1	1	1	DCL	
31	E 27 7 5F 337	REACTOR							1	1	1	1	1	1	ACL4	
32	E 22 C 92 375	TERMINAL BLOCK							1	1	1	1	1	1	TB2	
33	E 27 E 33 360	RESISTOR							1	1	1	1	1	1	RS	
34	E 27 7 4F 382	FUSE (T10AL 250V)	2	2	2	2	2	2	2	2	2	2	2	2	F1, F2	
35	E 27 6 48 382	FUSE (T6.3AL250V)	2	2	2	2	2	2	2	2	2	2	2	2	F3, F4	
36	—	SENSOR HOLDER	1	1	1	1	1	1	1	1	1	1	1	1		[BK25N082G05]
37	—	BOARD CASE POWER	1	1	1	1	1	1								[RK00C783G02]
37	—	BOARD CASE POWER							1	1	1	1	1	1		[BK25N048G03]
38	—	BOARD CASE CONT	1	1	1	1	1	1	1	1	1	1	1	1		[RK25N611G01]
39	—	BOARD CASE NF							1	1	1	1	1	1		[BK25N049G04]
40	—	HEAT SINK	1	1	1	1	1	1								[BK11N530H02]
40	—	HEAT SINK							1	1	1	1	1	1		[BK11J826H03]
41	—	LEAD ASSY COMP	1	1	1	1	1	1								[RG78F208G01]
41	—	LEAD ASSY COMP							1	1	1	1	1	1		[RG78F122G04]
42	—	COMP FELT(TOP)	1	1	1	1	1	1	1	1	1	1	1	1		[RK33G131H03]
43	—	COMP FELT(BODY)	1	1	1	1	1	1	1	1	1	1	1	1		[RK33B248H02]
44	E 27 L 67 530	HEX TOP CUSHION SET	1	1	1	1	1	1	1	1	1	1	1	1		

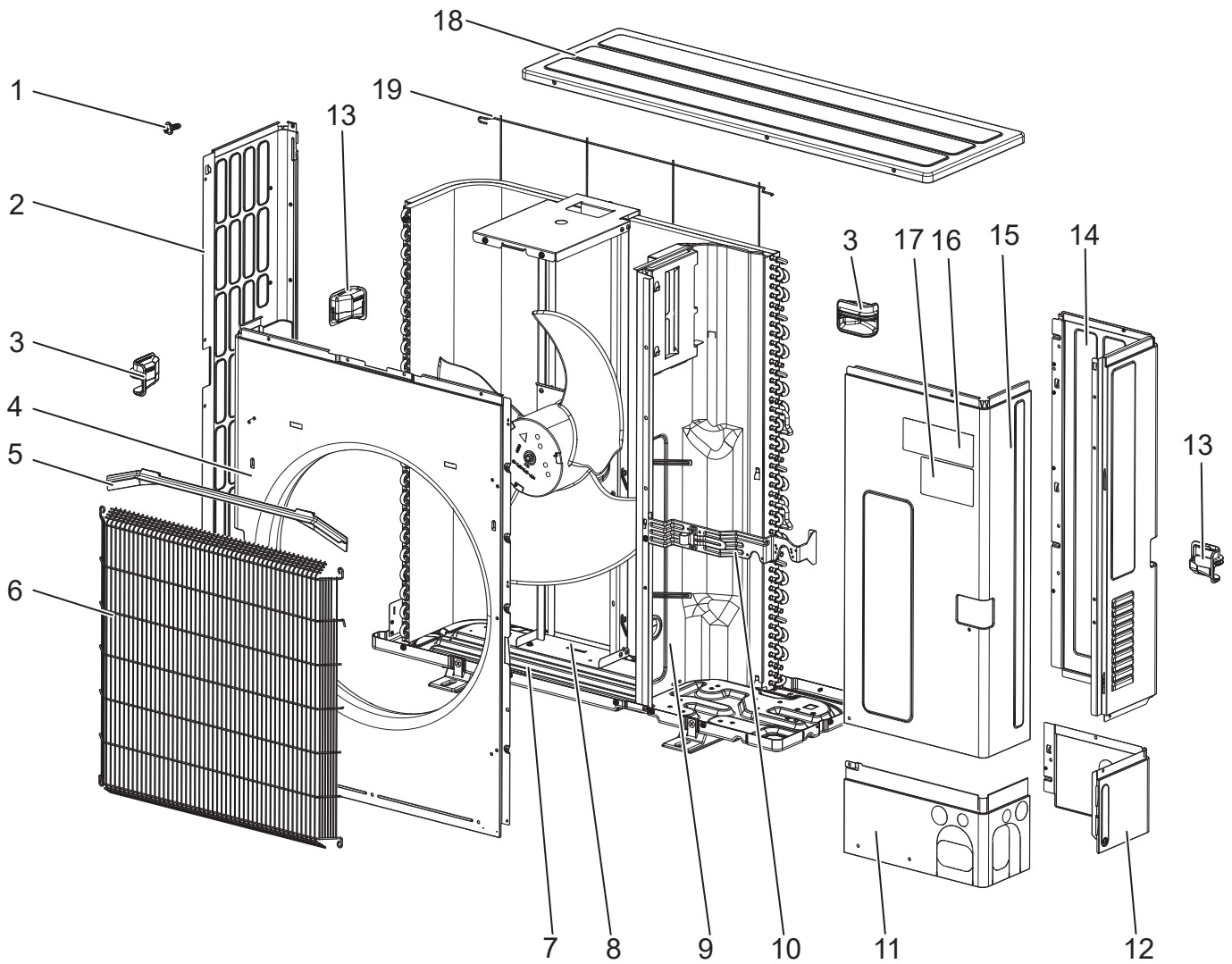


## STRUCTURAL PARTS

PUZ-M100VKA2.TH  
PUZ-M125VKA2.TH  
PUZ-M140VKA2.TH  
PUZ-M100YKA2.TH  
PUZ-M125YKA2.TH  
PUZ-M140YKA2.TH

PUZ-M100VKA2-ET.TH  
PUZ-M125VKA2-ET.TH  
PUZ-M140VKA2-ET.TH  
PUZ-M100YKA2-ET.TH  
PUZ-M125YKA2-ET.TH  
PUZ-M140YKA2-ET.TH

PUZ-M100VKA2-ER.TH  
PUZ-M125VKA2-ER.TH  
PUZ-M140VKA2-ER.TH  
PUZ-M100YKA2-ER.TH  
PUZ-M125YKA2-ER.TH  
PUZ-M140YKA2-ER.TH



1. The part quantity below indicates the required number of pieces per unit.
2. The circled No. indicates that the part is not shown in the figure

No.	Parts No.	Parts Name																		Remarks [Drawing No.]	
			PUZ-M100VKA2.TH	PUZ-M100VKA2-ET.TH	PUZ-M100VKA2-ER.TH	PUZ-M125VKA2.TH	PUZ-M125VKA2-ET.TH	PUZ-M125VKA2-ER.TH	PUZ-M140VKA2.TH	PUZ-M140VKA2-ET.TH	PUZ-M140VKA2-ER.TH	PUZ-M100YKA2.TH	PUZ-M100YKA2-ET.TH	PUZ-M100YKA2-ER.TH	PUZ-M125YKA2.TH	PUZ-M125YKA2-ET.TH	PUZ-M125YKA2-ER.TH	PUZ-M140YKA2.TH	PUZ-M140YKA2-ET.TH		PUZ-M140YKA2-ER.TH
1	E27 N04 250	F.ST SCREW	40	40	40	40	40	40	40	40	40	40	40	40	40	40	40	40	40	40	
2	E27 E33 086	SIDE PANEL (L)	1	1	1	1	1	1	1	1	1	1	1	1	1	1	1	1	1	1	1
3	E27 942 009	HANDLE (FRONT)	2	2	2	2	2	2	2	2	2	2	2	2	2	2	2	2	2	2	2
4	E27 H93 232	FRONT PANEL	1	1	1	1	1	1	1	1	1	1	1	1	1	1	1	1	1	1	1
5	E27 A15 531	ICE GUARD	1	1	1	1	1	1	1	1	1	1	1	1	1	1	1	1	1	1	1
6	E27 H93 521	WIRE GRILLE	1	1	1	1	1	1	1	1	1	1	1	1	1	1	1	1	1	1	1
7	E27 J26 290	BASE	1	1	1								1	1	1						
7	E27 E33 290	BASE				1	1	1	1	1	1				1	1	1	1	1	1	1
8	E27 J26 515	MOTOR SUPPORT	1	1	1	1	1	1	1	1	1	1	1	1	1	1	1	1	1	1	1
9	E27 E33 293	SEPARATOR	1	1	1	1	1	1	1	1	1	1	1	1	1	1	1	1	1	1	1
10	—	VALVE BED	1	1	1	1	1	1	1	1	1	1	1	1	1	1	1	1	1	1	1
11	E27 E33 006	COVER PANEL (FRONT)	1	1	1	1	1	1	1	1	1	1	1	1	1	1	1	1	1	1	1
12	E27 J26 006	COVER PANEL (REAR)	1	1	1	1	1	1	1	1	1	1	1	1	1	1	1	1	1	1	1
13	E27 943 009	HANDLE (REAR)	2	2	2	2	2	2	2	2	2	2	2	2	2	2	2	2	2	2	2
14	E27 J26 085	SIDE PANEL (R)	1	1	1								1	1	1						
14	E27 M97 085	SIDE PANEL (R)				1	1	1	1	1	1				1	1	1	1	1	1	1
15	E27 J26 245	SERVICE PANEL	1	1	1							1	1	1							
15	E27 M97 245	SERVICE PANEL				1	1	1	1	1	1				1	1	1	1	1	1	1
16	—	BRAND LABEL	1	1	1	1	1	1	1	1	1	1	1	1	1	1	1	1	1	1	1
17	—	BRAND LABEL	1	1	1	1	1	1	1	1	1	1	1	1	1	1	1	1	1	1	1
18	E27 E33 297	TOP PANEL	1	1	1	1	1	1	1	1	1	1	1	1	1	1	1	1	1	1	1
19	E27 E33 523	REAR GUARD	1	1	1	1	1	1	1	1	1	1	1	1	1	1	1	1	1	1	1

**Mr. SLIM**

**MITSUBISHI ELECTRIC CORPORATION**

HEAD OFFICE: TOKYO BUILDING, 2-7-3, MARUNOUCHI, CHIYODA-KU, TOKYO 100-8310, JAPAN