

PARTS CATALOG

R32

Outdoor unit
[Model Name]

[Service Ref.]

PUZ-SM100VKA2

PUZ-SM100VKA2.TH

PUZ-SM125VKA2

PUZ-SM125VKA2.TH

PUZ-SM140VKA2

PUZ-SM140VKA2.TH

PUZ-SM100YKA2

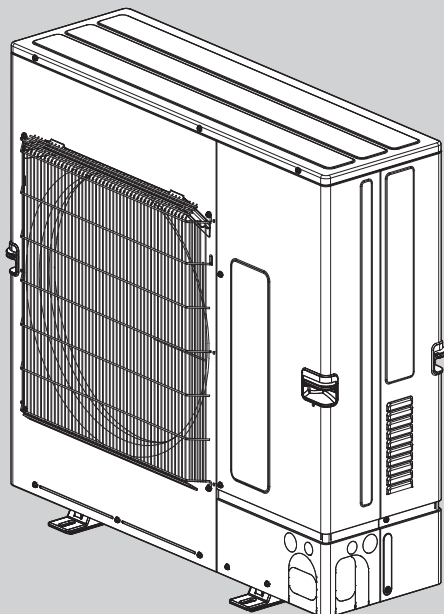
PUZ-SM100YKA2.TH

PUZ-SM125YKA2

PUZ-SM125YKA2.TH

PUZ-SM140YKA2

PUZ-SM140YKA2.TH



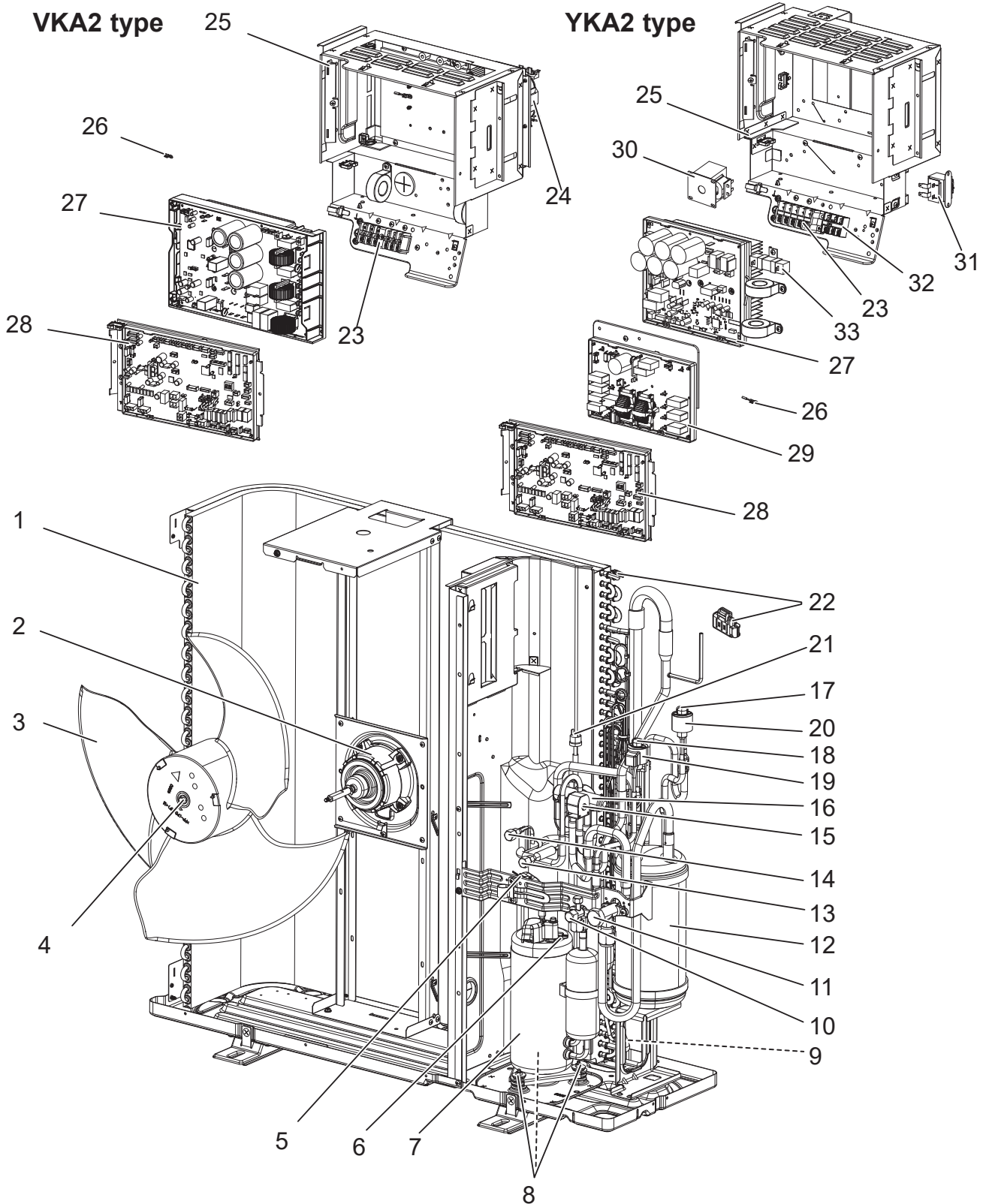
CONTENTS

1. SERVICE PARTS LIST 2

SERVICE MANUAL (OCH774)

FUNCTIONAL AND ELECTRICAL PARTS

PUZ-SM100VKA2.TH
PUZ-SM100YKA2.TH



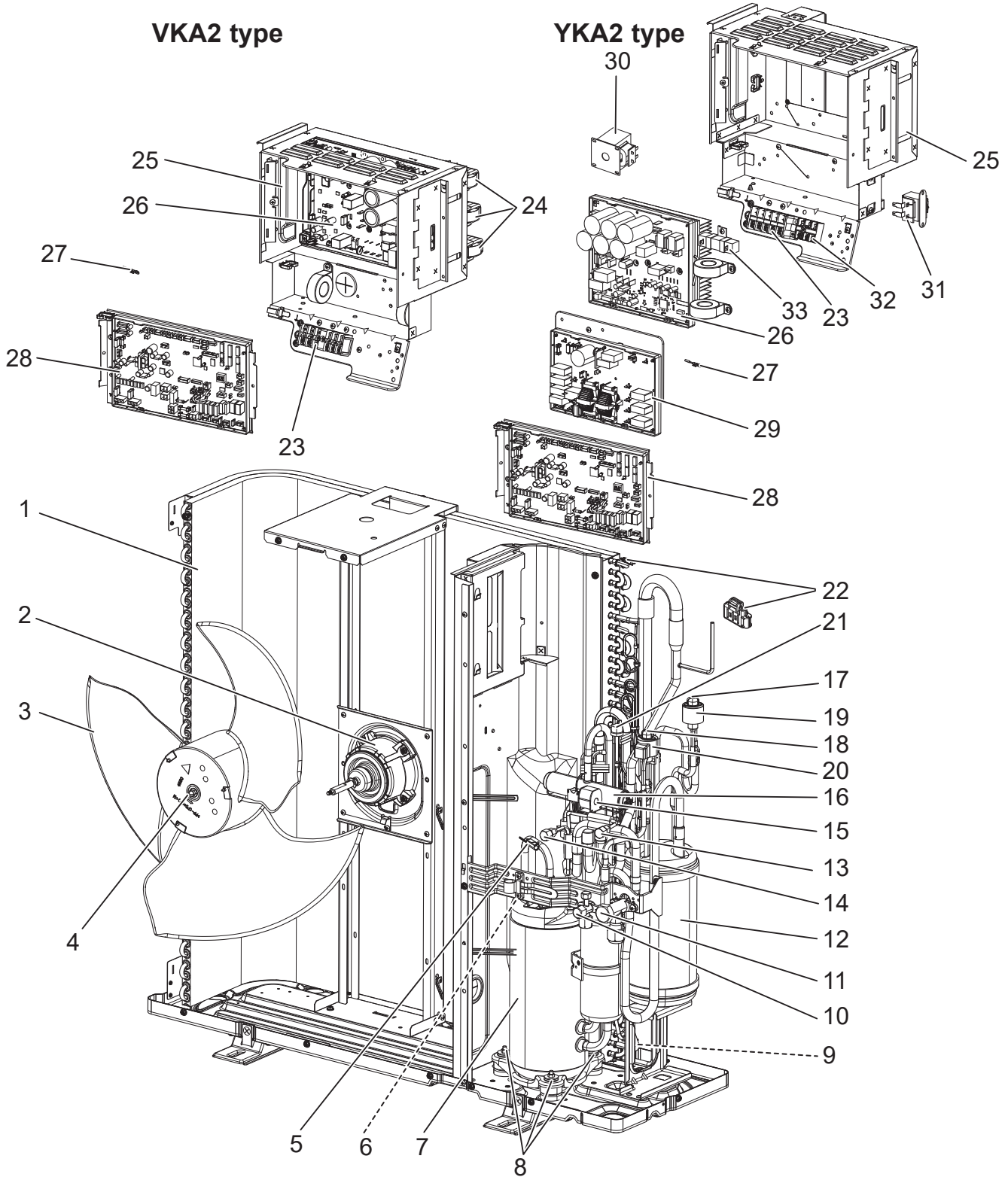
1. The part quantity below indicates the required number of pieces per unit.
2. The circled No. indicates that the part is not shown in the figure

No.	Part No.	Part Name	PUZ-SM100VKA2.TH	PUZ-SM100YKA2.TH	Wiring Diagram Symbol	Remarks [Drawing No.]
1	E 2 7 J 2 6 6 3 0	OUTDOOR HEAT EXCHANGER	1	1		
2	E 2 7 F 0 3 3 0 1	OUTDOOR FAN MOTOR	1	1	MF	
3	E 2 7 9 4 2 5 0 1	PROPELLER FAN	1	1		1PC/SET
4	E 2 7 A 1 5 5 0 8	PROPELLER FAN NUT	1	1		
5	E 2 7 E 3 4 3 0 7	THERMISTOR	1	1	TH4	
6	E 2 7 E 3 3 3 0 7	THERMISTOR	1	1	TH33	
7	E 2 7 N 5 1 9 0 0	COMPRESSOR SVB220FBGMT	1		MC	SVB220FBGMT
7	E 2 7 M 9 6 9 0 0	COMPRESSOR SVB220FBAMT		1	MC	SVB220FBAMT
8	E 2 2 C 3 4 5 0 6	COMPRESSOR RUBBER MOUNT	3	3		3PCS/SET
9	E 2 7 9 4 4 3 0 7	THERMISTOR	1	1	TH3	
10	E 2 7 9 4 2 6 6 1	STOP VALVE 3/8F	1	1		
11	E 2 7 E 3 3 6 6 1	STOP VALVE 5/8F	1	1		
12	E 2 7 M 9 6 9 5 9	POWER RECEIVER	1	1		
13	E 2 7 9 4 2 6 4 1	CHARGE PLUG	1	1		
14	E 2 7 9 4 3 6 4 1	CHARGE PLUG	1	1		
15	E 2 7 P 0 5 4 9 0	R.V. COIL	1	1		21S4
16	E 2 2 J 6 1 9 6 1	4-WAY VALVE	1	1		
17	E 2 7 M 9 6 6 4 5	EXPANSION VALVE ASSY A	1	1		
18	E 2 7 M 9 7 6 4 5	EXPANSION VALVE ASSY B	1	1		
19	E 2 7 J 2 7 4 9 3	LINEAR EXPANSION VALVE COIL	1	1	LEV-B	RD
20	E 2 7 J 2 6 4 9 3	LINEAR EXPANSION VALVE COIL	1	1	LEV-A	WH
21	E 2 7 9 4 2 6 4 6	HIGH PRESSURE SWITCH	1	1		
22	E 2 7 J 2 6 3 0 7	THERMISTOR-W	1	1	TH6, 7	
23	E 2 7 E 4 5 3 7 4	TERMINAL BLOCK	1		TB1	
23	E 2 7 9 4 3 3 7 4	TERMINAL BLOCK		1	TB1	
24	E 2 7 J 2 6 3 3 7	REACTOR	1		DCL	
25	—	ELECTRICAL PARTS BOX	1			[BK00N051G55]
25	—	ELECTRICAL PARTS BOX		1		[BK00N051G57]
26	E 2 7 E 4 5 3 0 7	THERMISTOR	1		TH8	
26	E 2 7 E 3 5 3 0 7	THERMISTOR		1	TH8	
27	E 2 7 W 8 7 4 4 0	POWER BOARD	1		P.B.	
27	E 2 7 7 4 F 4 4 0	POWER BOARD		1	P.B.	
28	E 2 7 8 3 F 4 5 0	OUTDOOR CONTROLLER P.C. BOARD	1	1	C.B.	
29	E 2 7 H 9 6 4 4 4	NOISE FILTER P.C. BOARD		1	N.F.	
30	E 2 7 7 4 F 3 3 7	REACTOR		1	DCL	
31	E 2 7 7 5 F 3 3 7	REACTOR		1	ACL4	
32	E 2 2 C 9 2 3 7 5	TERMINAL BLOCK		1	TB2	
33	E 2 7 E 3 3 3 6 0	RESISTOR		1	RS	
34	E 2 7 7 4 F 3 8 2	FUSE (T10AL 250V)	2	2	F1, F2	
35	E 2 7 6 4 8 3 8 2	FUSE (T6.3AL 250V)	2	2	F3, F4	
36	—	SENSOR HOLDER	1	1		[BK25N082G05]
37	—	BOARD CASE POWER	1			[RK00C783G02]
37	—	BOARD CASE POWER		1		[BK25N048G03]
38	—	BOARD CASE CONT	1	1		[RK25N611G01]
39	—	BOARD CASE NF		1		[BK25N049G04]
40	—	HEAT SINK	1			[BK11N530H02]
40	—	HEAT SINK		1		[BK11J826H03]
41	—	LEAD ASSY COMP	1			[RG78F385G03]
41	—	LEAD ASSY COMP		1		[RG78F200G01]
42	—	COMP FELT (TOP)	1	1		[RK33G130H03]
43	—	COMP FELT (BODY)	1	1		[RK33B247H04]
44	E 2 7 L 6 7 5 3 0	HEX TOP CUSHION SET	1	1		

FUNCTIONAL AND ELECTRICAL PARTS

PUZ-SM125VKA2.TH
PUZ-SM140VKA2.TH

PUZ-SM125YKA2.TH
PUZ-SM140YKA2.TH

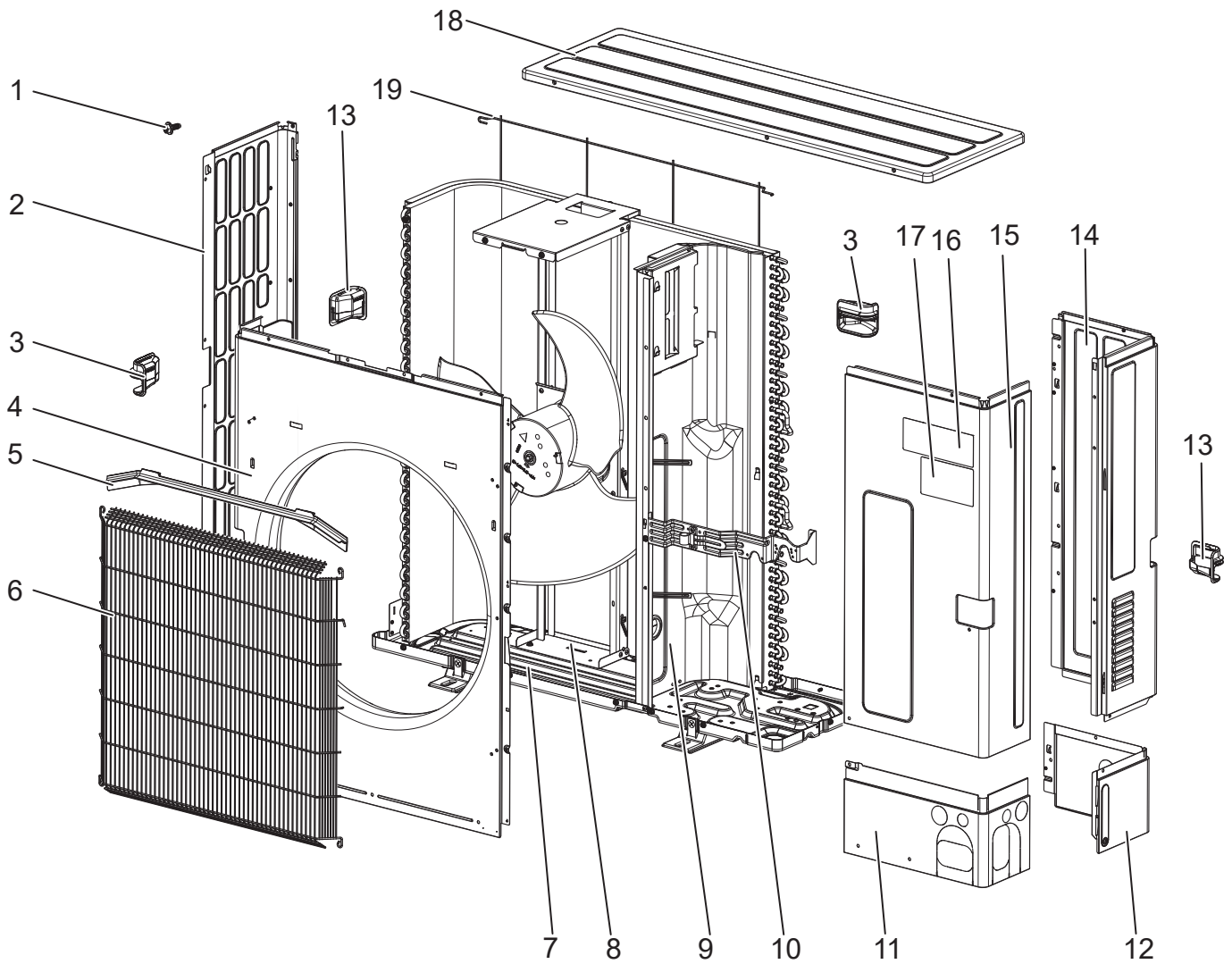


1. The part quantity below indicates the required number of pieces per unit.
2. The circled No. indicates that the part is not shown in the figure

No.	Part No.	Part Name	PUZ-SM125VKA2.TH	PUZ-SM140VKA2.TH	PUZ-SM125YKA2.TH	PUZ-SM140YKA2.TH	Wiring Diagram Symbol	Remarks [Drawing No.]
1	E 2 7 J 2 6 6 3 0	OUTDOOR HEAT EXCHANGER	1	1	1	1		
2	E 2 7 F 0 3 3 0 1	OUTDOOR FAN MOTOR	1	1	1	1	MF	
3	E 2 7 9 4 2 5 0 1	PROPELLER FAN	1	1	1	1		1PC/SET
4	E 2 7 A 1 5 5 0 8	PROPELLER FAN NUT	1	1	1	1		
5	E 2 7 E 3 4 3 0 7	THERMISTOR	1	1	1	1	TH4	
6	E 2 7 E 3 3 3 0 7	THERMISTOR	1	1	1	1	TH33	
7	E 2 7 M 9 7 9 0 0	COMPRESSOR MVB33FBVMC	1	1	1	1	MC	MVB33FBVMC
8	E 2 2 2 6 7 5 0 6	COMPRESSOR RUBBER MOUNT	3	3	3	3		3PCS/SET
9	E 2 7 9 4 4 3 0 7	THERMISTOR	1	1	1	1	TH3	
10	E 2 7 9 4 2 6 6 1	STOP VALVE 3/8F	1	1	1	1		
11	E 2 7 E 3 3 6 6 1	STOP VALVE 5/8F	1	1	1	1		
12	E 2 7 M 9 6 9 5 9	POWER RECEIVER	1	1	1	1		
13	E 2 7 9 4 2 6 4 1	CHARGE PLUG	1	1	1	1		
14	E 2 7 9 4 2 6 4 1	CHARGE PLUG	1	1	1	1		
15	E 2 7 P 0 5 4 9 0	R.V. COIL	1	1	1	1		21S4
16	E 2 7 M 9 7 9 6 1	4-WAY VALVE	1	1	1	1		
17	E 2 7 M 9 6 6 4 5	EXPANSION VALVE ASSY A	1	1	1	1		
18	E 2 7 M 9 7 6 4 5	EXPANSION VALVE ASSY B	1	1	1	1		
19	E 2 7 J 2 6 4 9 3	LEV COIL	1	1	1	1	LEV-A	WH
20	E 2 7 J 2 7 4 9 3	LEV COIL	1	1	1	1	LEV-B	RD
21	E 2 7 9 4 2 6 4 6	HIGH PRESSURE SWITCH	1	1	1	1		
22	E 2 7 J 2 6 3 0 7	THERMISTOR-W	1	1	1	1	TH6, 7	
23	E 2 7 E 4 5 3 7 4	TERMINAL BLOCK	1	1			TB1	
23	E 2 7 9 4 3 3 7 4	TERMINAL BLOCK			1	1	TB1	
24	E 2 7 E 4 5 3 3 7	REACTOR	3	3			DCL1, DCL2, DCL3	3PCS/SET
25	—	ELECTRICAL PARTS BOX	1	1				[BK00N051G56]
25	—	ELECTRICAL PARTS BOX			1	1		[BK00N051G57]
26	E 2 7 W 8 8 4 4 0	POWER BOARD	1	1			P.B.	
26	E 2 7 7 5 F 4 4 0	POWER BOARD			1	1	P.B.	
27	E 2 7 E 4 5 3 0 7	THERMISTOR	1	1			TH8	
27	E 2 7 E 3 5 3 0 7	THERMISTOR			1	1	TH8	
28	E 2 7 8 3 F 4 5 0	OUTDOOR CONTROLLER P.C. BOARD	1	1	1	1	C.B.	
29	E 2 7 H 9 6 4 4 4	NOISE FILTER P.C. BOARD			1	1	N.F.	
30	E 2 7 7 4 F 3 3 7	REACTOR			1	1	DCL	
31	E 2 7 7 5 F 3 3 7	REACTOR			1	1	ACL4	
32	E 2 2 C 9 2 3 7 5	TERMINAL BLOCK			1	1	TB2	
33	E 2 7 E 3 3 3 6 0	RESISTOR			1	1	RS	
34	E 2 7 7 4 F 3 8 2	FUSE (T10AL 250V)	2	2	2	2	F1, F2	
35	E 2 7 6 4 8 3 8 2	FUSE<T6.3AL250V)	2	2	2	2	F3, F4	
36	—	SENSOR HOLDER	1	1	1	1		[BK25N082G05]
37	—	BOARD CASE POWER	1	1				[RK00C783G02]
37	—	BOARD CASE POWER			1	1		[BK25N048G03]
38	—	BOARD CASE CONT	1	1	1	1		[RK25N611G01]
39	—	BOARD CASE NF			1	1		[BK25N049G04]
40	—	HEAT SINK	1	1				[BK11N530H02]
40	—	HEAT SINK			1	1		[BK11J826H03]
41	—	LEAD ASSY COMP	1	1				[RG78F208G01]
41	—	LEAD ASSY COMP			1	1		[RG78F122G04]
42	—	COMP FELT(TOP)	1	1	1	1		[RK33G131H03]
43	—	COMP FELT(BODY)	1	1	1	1		[RK33B248H02]
44	E 2 7 L 6 7 5 3 0	HEX TOP CUSHION SET	1	1	1	1		

STRUCTURAL PARTS

PUZ-SM100VKA2.TH
PUZ-SM125VKA2.TH
PUZ-SM140VKA2.TH
PUZ-SM100YKA2.TH
PUZ-SM125YKA2.TH
PUZ-SM140YKA2.TH



1. The part quantity below indicates the required number of pieces per unit.
2. The circled No. indicates that the part is not shown in the figure

No.	Parts No.	Parts Name	PUZ-SM100VKA2.TH	PUZ-SM125VKA2.TH	PUZ-SM140VKA2.TH	PUZ-SM100YKA2.TH	PUZ-SM125YKA2.TH	PUZ-SM140YKA2.TH	Remarks [Drawing No.]
1	E 2 7 N 0 4 2 5 0	F.ST SCREW	40	40	40	40	40	40	
2	E 2 7 E 3 3 0 8 6	SIDE PANEL (L)	1	1	1	1	1	1	
3	E 2 7 9 4 2 0 0 9	HANDLE (FRONT)	2	2	2	2	2	2	
4	E 2 7 H 9 3 2 3 2	FRONT PANEL	1	1	1	1	1	1	
5	E 2 7 A 1 5 5 3 1	ICE GUARD	1	1	1	1	1	1	
6	E 2 7 H 9 3 5 2 1	WIRE GRILLE	1	1	1	1	1	1	
7	E 2 7 J 2 6 2 9 0	BASE	1			1			
7	E 2 7 E 3 3 2 9 0	BASE		1	1		1	1	
8	E 2 7 J 2 6 5 1 5	MOTOR SUPPORT	1	1	1	1	1	1	
9	E 2 7 E 3 3 2 9 3	SEPARATOR	1	1	1	1	1	1	
10	—	VALVE BED	1	1	1	1	1	1	[RK00B378G03]
11	E 2 7 E 3 3 0 0 6	COVER PANEL (FRONT)	1	1	1	1	1	1	
12	E 2 7 J 2 6 0 0 6	COVER PANEL (REAR)	1	1	1	1	1	1	
13	E 2 7 9 4 3 0 0 9	HANDLE (REAR)	2	2	2	2	2	2	
14	E 2 7 J 2 6 0 8 5	SIDE PANEL (R)	1			1			
14	E 2 7 M 9 7 0 8 5	SIDE PANEL (R)		1	1		1	1	
15	E 2 7 J 2 6 2 4 5	SERVICE PANEL	1			1			
15	E 2 7 M 9 7 2 4 5	SERVICE PANEL		1	1		1	1	
16	—	BRAND LABEL	1	1	1	1	1	1	[BT79L338H01]
17	—	BRAND LABEL	1	1	1	1	1	1	[BT79L209H01]
18	E 2 7 E 3 3 2 9 7	TOP PANEL	1	1	1	1	1	1	
19	E 2 7 E 3 3 5 2 3	REAR GUARD	1	1	1	1	1	1	

Mr. SLIM

mitsubishi electric corporation

HEAD OFFICE: TOKYO BUILDING, 2-7-3, MARUNOUCHI, CHIYODA-KU, TOKYO 100-8310, JAPAN