

PARTS CATALOG

Series PKA

Wall Mounted

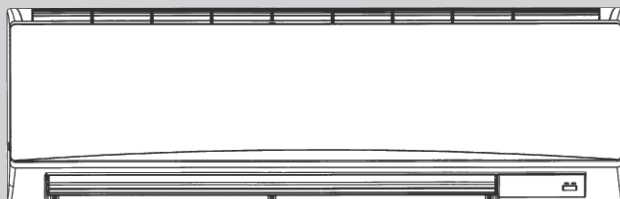
R32/R410A

**Indoor unit
[Model Name]**

PKA-M60KA2
PKA-M60KA2-ET
PKA-M71KA2
PKA-M71KA2-ET
PKA-M100KA2
PKA-M100KA2-ET
PKA-M60KAL2
PKA-M60KAL2-ET
PKA-M71KAL2
PKA-M71KAL2-ET
PKA-M100KAL2
PKA-M100KAL2-ET

[Service Ref.]

PKA-M60KA2R1.TH
PKA-M60KA2-ETR1.TH
PKA-M71KA2R1.TH
PKA-M71KA2-ETR1.TH
PKA-M100KA2R1.TH
PKA-M100KA2-ETR1.TH
PKA-M60KAL2R1.TH
PKA-M60KAL2-ETR1.TH
PKA-M71KAL2R1.TH
PKA-M71KAL2-ETR1.TH
PKA-M100KAL2R1.TH
PKA-M100KAL2-ETR1.TH



INDOOR UNIT

CONTENTS

1. SERVICE PARTS LIST2

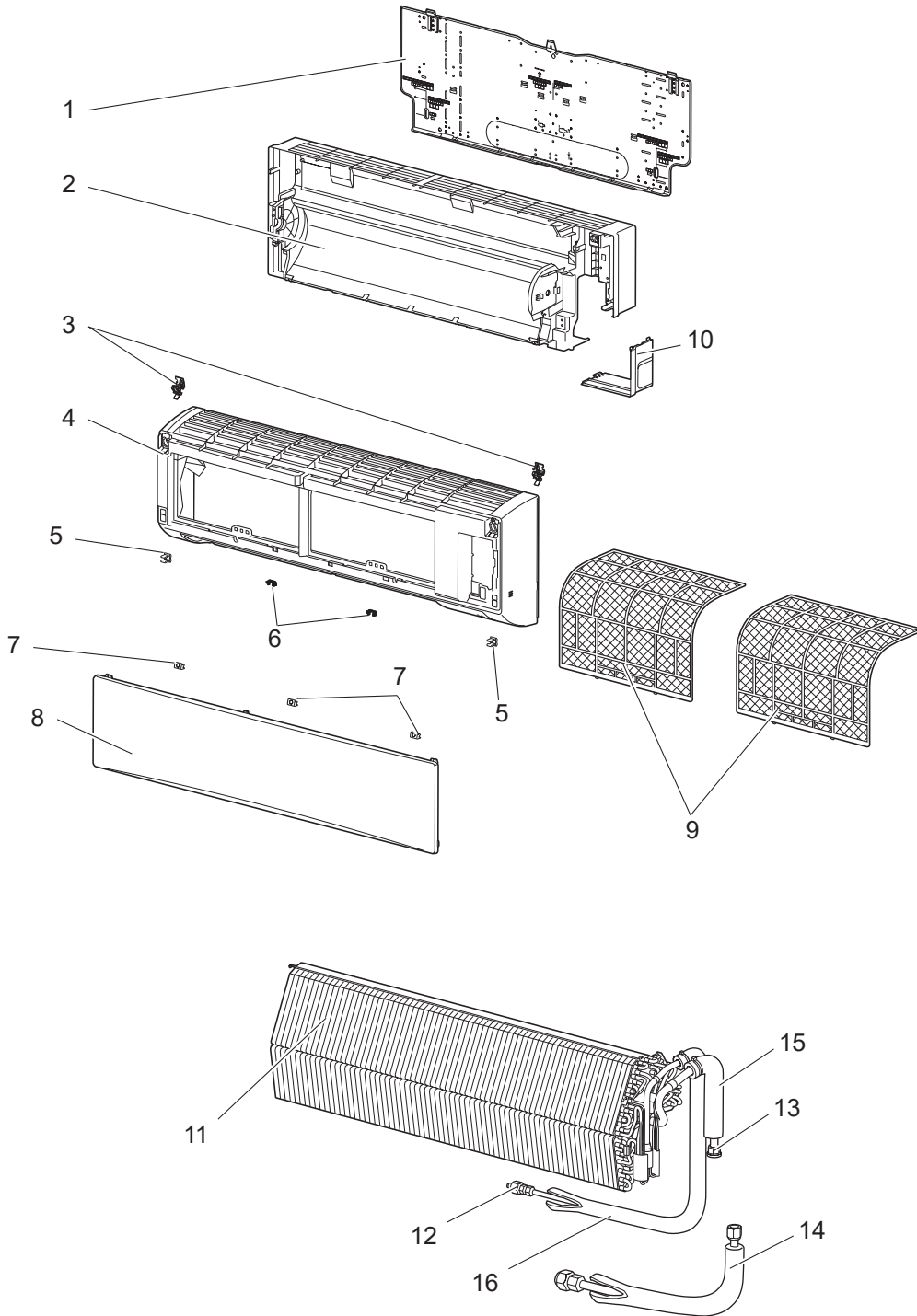
SERVICE MANUAL (OCH883)

PANEL AND HEAT EXCHANGER PARTS

PKA-M60KA2R1.TH
 PKA-M60KA2-ETR1.TH
 PKA-M60KAL2R1.TH
 PKA-M60KAL2-ETR1.TH

PKA-M71KA2R1.TH
 PKA-M71KA2-ETR1.TH
 PKA-M71KAL2R1.TH
 PKA-M71KAL2-ETR1.TH

PKA-M100KA2R1.TH
 PKA-M100KA2-ETR1.TH
 PKA-M100KAL2R1.TH
 PKA-M100KAL2-ETR1.TH



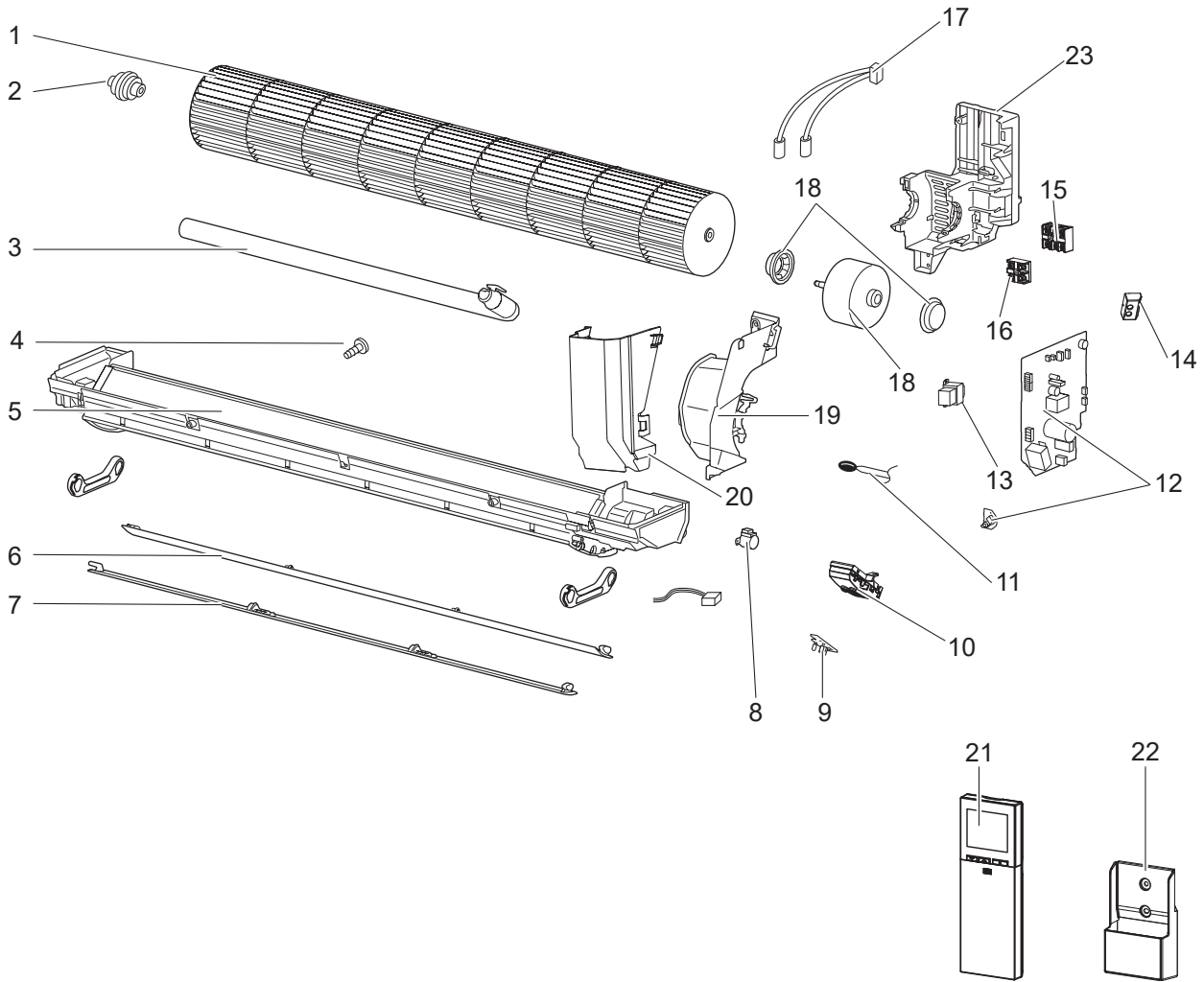
No.	Parts No.	Parts Name	PKA-M60KA2R1.TH	PKA-M60KA2-ETR1.TH	PKA-M71KA2R1.TH	PKA-M71KA2-ETR1.TH	PKA-M100KA2R1.TH	PKA-M100KA2-ETR1.TH	PKA-M60KAL2R1.TH	PKA-M60KAL2-ETR1.TH	PKA-M71KAL2R1.TH	PKA-M71KAL2-ETR1.TH	PKA-M100KAL2R1.TH	PKA-M100KAL2-ETR1.TH	Remarks [Drawing No.]
1	E22 C92 970	INSTALLATION PLATE	1	1	1	1	1	1	1	1	1	1	1	1	
2	E27 5B2 234	BOX ASSEMBLY	1	1	1	1	1	1	1	1	1	1	1	1	
3	E27 30E 021	ARM HOLDER SET	1	1	1	1	1	1	1	1	1	1	1	1	Set (left, right)
4	E27 1B4 000	PANEL ASSEMBLY	1	1	1	1	1	1	1	1	1	1	1	1	Includes 3, 5, 6 and 8
5	E22 408 142	CATCH	2	2	2	2	2	2	2	2	2	2	2	2	2 pcs/set
6	E22 C92 142	CATCH	2	2	2	2	2	2	2	2	2	2	2	2	2 pcs/set
7	E27 1B4 067	SCREW CAP	3	3	3	3	3	3	3	3	3	3	3	3	3 pcs/set
8	E27 1B4 010	FRONT PANEL	1	1	1	1	1	1	1	1	1	1	1	1	
9	E22 C92 100	CATECHIN AIR FILTER	2	2	2	2	2	2	2	2	2	2	2	2	
10	E22 8F7 975	CORNER BOX	1	1	1	1	1	1	1	1	1	1	1	1	
11	E27 520 620	INDOOR HEAT EXCHANGER	1	1	1	1			1	1	1	1			Except connect pipe
11	E27 522 620	INDOOR HEAT EXCHANGER					1	1					1	1	Except connect pipe
12	E22 527 667	UNION 3/8"	1	1	1	1	1	1	1	1	1	1	1	1	For liquid
13	E22 C92 666	UNION 5/8"	1	1	1	1	1	1	1	1	1	1	1	1	For gas
14	E27 H49 980	JOINT ASSEMBLY	1	1	1	1	1	1	1	1	1	1	1	1	
15	E22 C93 668	CONNECT PIPE (GAS)	1	1	1	1	1	1	1	1	1	1	1	1	
16	E27 5B2 668	CONNECT PIPE (LIQ)	1	1	1	1	1	1	1	1	1	1	1	1	

FUNCTIONAL PARTS

PKA-M60KA2R1.TH
PKA-M60KA2-ETR1.TH
PKA-M60KAL2R1.TH
PKA-M60KAL2-ETR1.TH

PKA-M71KA2R1.TH
PKA-M71KA2-ETR1.TH
PKA-M71KAL2R1.TH
PKA-M71KAL2-ETR1.TH

PKA-M100KA2R1.TH
PKA-M100KA2-ETR1.TH
PKA-M100KAL2R1.TH
PKA-M100KAL2-ETR1.TH



Parts numbers that are circled are not shown in the illustration.

No.	Parts No.	Parts Name	PKA-M60KA2R1.TH	PKA-M60KA2-ETR1.TH	PKA-M71KA2R1.TH	PKA-M71KA2-ETR1.TH	PKA-M100KA2R1.TH	PKA-M100KA2-ETR1.TH	PKA-M60KAL2R1.TH	PKA-M60KAL2-ETR1.TH	PKA-M71KAL2R1.TH	PKA-M71KAL2-ETR1.TH	PKA-M100KAL2R1.TH	PKA-M100KAL2-ETR1.TH	Wiring diagram symbol	Remarks [Drawing No.]
1	E22 R79 302	LINE FLOW FAN	1	1	1	1	1	1	1	1	1	1	1	1		
2	E22 A89 509	BEARING MOUNT ASSEMBLY	1	1	1	1	1	1	1	1	1	1	1	1		
3	E22 T20 702	DRAIN HOSE	1	1	1	1	1	1	1	1	1	1	1	1		
4	E27 42R 705	DRAIN CAP	1	1	1	1	1	1	1	1	1	1	1	1		
5	E27 5B2 235	NOZZLE ASSEMBLY	1	1	1	1	1	1	1	1	1	1	1	1		Full assembly except drain hose and vanes
6	E22 8F7 040	VANE UPPER	1	1	1	1	1	1	1	1	1	1	1	1		
7	E22 8F7 041	VANE LOWER	1	1	1	1	1	1	1	1	1	1	1	1		
8	E22 749 303	VANE MOTOR	1	1	1	1	1	1	1	1	1	1	1	1	MV	
9	E27 518 468	RECEIVER P.C.BOARD	1	1	1	1	1	1	1	1	1	1	1	1	W.B.	
10	E22 C92 095	RECEIVER HOLDER	1	1	1	1	1	1	1	1	1	1	1	1		
11	E27 518 308	ROOM TEMP. THERMISTOR	1	1	1	1	1	1	1	1	1	1	1	1	TH1	
12	E27 94H 447	INDOOR CONTROLLER BOARD	1	1	1	1	1	1	1	1	1	1	1	1	I.B.	Includes SWITCH BOARD
13	E27 94H 337	REACTOR	1	1	1	1	1	1	1	1	1	1	1	1	ACL	
14	E27 518 782	SWITCH HOLDER	1	1	1	1	1	1	1	1	1	1	1	1		
15	E27 489 375	TERMINAL BLOCK	1	1	1	1	1	1	1	1	1	1	1	1	TB4	3P (S1,S2,S3)
16	E27 516 375	TERMINAL BLOCK	1	1	1	1	1	1							TB5	2P (1,2)
17	E27 491 307	PIPE TEMP. DETECTION THERMISTOR LIQUID/COND. EVA.	1	1	1	1	1	1	1	1	1	1	1	1	TH2, TH5	
18	E22 93N 300	INDOOR FAN MOTOR	1	1	1	1	1	1	1	1	1	1	1	1	MF	
19	E22 C92 333	MOTOR BAND	1	1	1	1	1	1	1	1	1	1	1	1		
20	E27 518 541	WATER COVER	1	1	1	1	1	1	1	1	1	1	1	1		
21	E27 09G 426	WIRELESS REMOTE CONTROLLER							1	1	1	1	1	1		
22	E27 D44 083	REMOTE CONTROLLER HOLDER							1	1	1	1	1	1		
23	E22 55J 333	MOTOR BED	1	1	1	1	1	1	1	1	1	1	1	1		
24	E22 784 382	FUSE	1	1	1	1	1	1	1	1	1	1	1	1	FUSE	ET3.15AL 250VAC

Mr. SLIM

mitsubishi electric corporation

HEAD OFFICE: TOKYO BUILDING, 2-7-3, MARUNOUCHI, CHIYODA-KU, TOKYO 100-8310, JAPAN