

**Revision E:**

• MUZ-LN25/35/50VG2- **ET2**, **ER2**, **E3** and  
MUZ-LN60VG2- **E1**, **ER1**, **ET1** have been  
added.

OBB767 REVISED EDITION-D is void.

## OUTDOOR UNIT



**No. OBB767  
REVISED EDITION-E**

# PARTS CATALOG

### Models

**MUZ-LN25VG** - **E1**, **ER1**, **ET1**

**MUZ-LN35VG** - **E1**, **ER1**, **ET1**

**MUZ-LN50VG** - **E1**, **ER1**, **ET1**

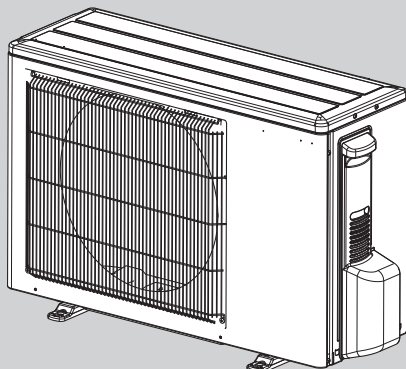
**MUZ-LN60VG** - **E1**, **ER1**, **ET1**

**MUZ-LN25VG2** - **E1**, **ER1**, **ET1**, **E2**, **ET2**, **ER2**, **E3**

**MUZ-LN35VG2** - **E1**, **ER1**, **ET1**, **E2**, **ET2**, **ER2**, **E3**

**MUZ-LN50VG2** - **E1**, **ER1**, **ET1**, **E2**, **ET2**, **ER2**, **E3**

**MUZ-LN60VG2** - **E1**, **ER1**, **ET1**



**MUZ-LN25VG MUZ-LN25VG2  
MUZ-LN35VG MUZ-LN35VG2**

### CONTENTS

1. SERVICE PARTS LIST ..... 2

**SERVICE MANUAL (OBH767)**

### Revision A:

- Part number for INVERTER P.C. BOARD has been changed.

### Revision B:

- MUZ-LN25VG2 - [E1], [ET1], MUZ-LN35VG2 - [E1], [ET1], and MUZ-LN50VG - [E1], [ET1] have been added.
- Some descriptions have been modified.

### Revision C:

- MUZ-LN25/35/50VG2- [ER1] have been added.

### Revision D:

- MUZ-LN25/35/50VG2- [E2] and MUZ-LN60VG- [E2] have been added.

### Revision E:

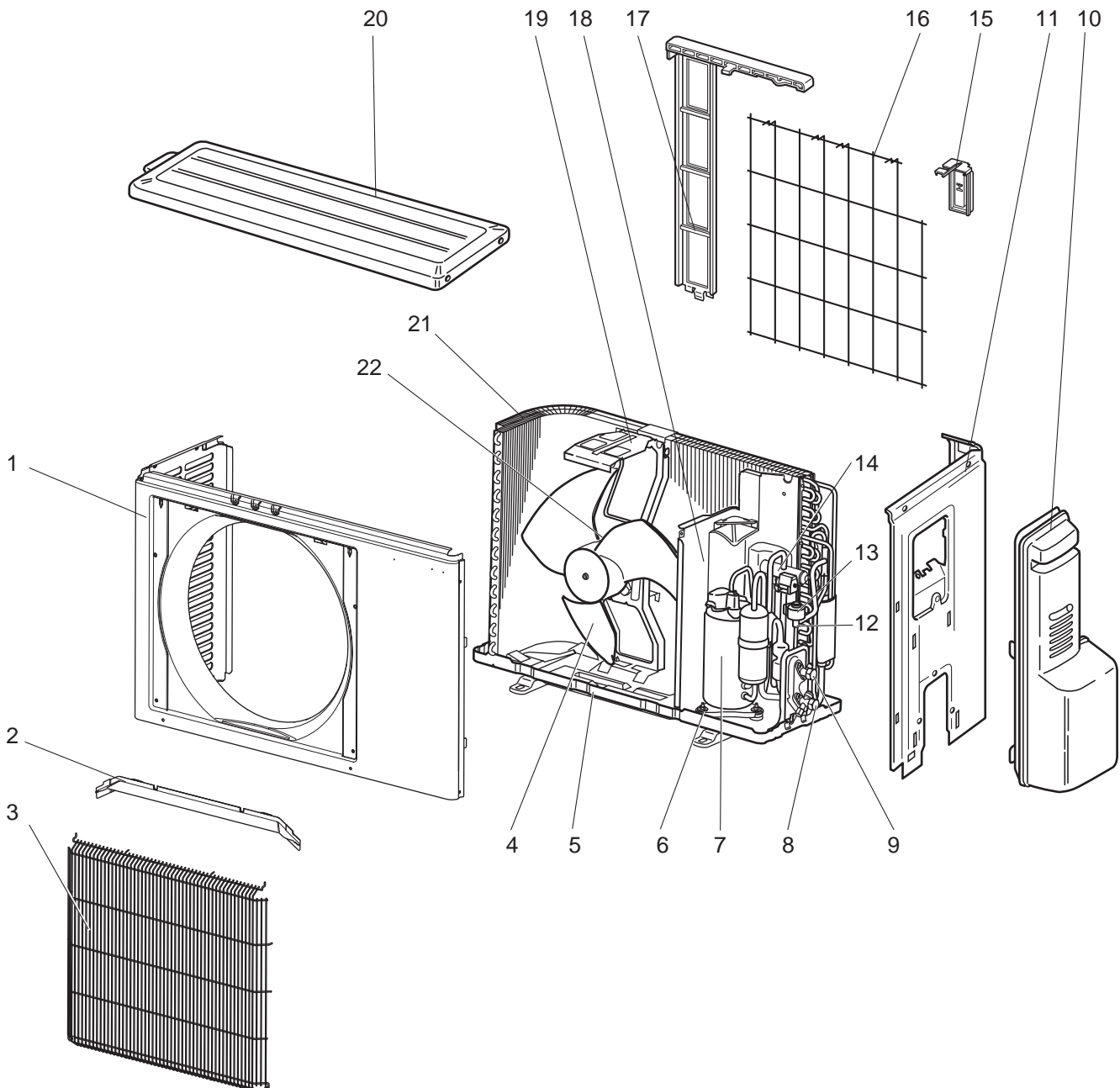
- MUZ-LN25/35/50VG2- [ET2], [ER2], [E3] and MUZ-LN60VG2- [E1], [ER1], [ET1] have been added.

# 1

## SERVICE PARTS LIST

MUZ-LN25VG - [E1], [ER1], [ET1]

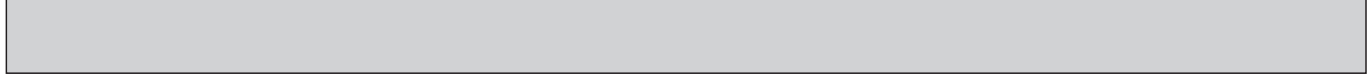
### 1-1. OUTDOOR UNIT STRUCTURAL PARTS AND FUNCTIONAL PARTS



## 1-1. OUTDOOR UNIT STRUCTURAL PARTS AND FUNCTIONAL PARTS

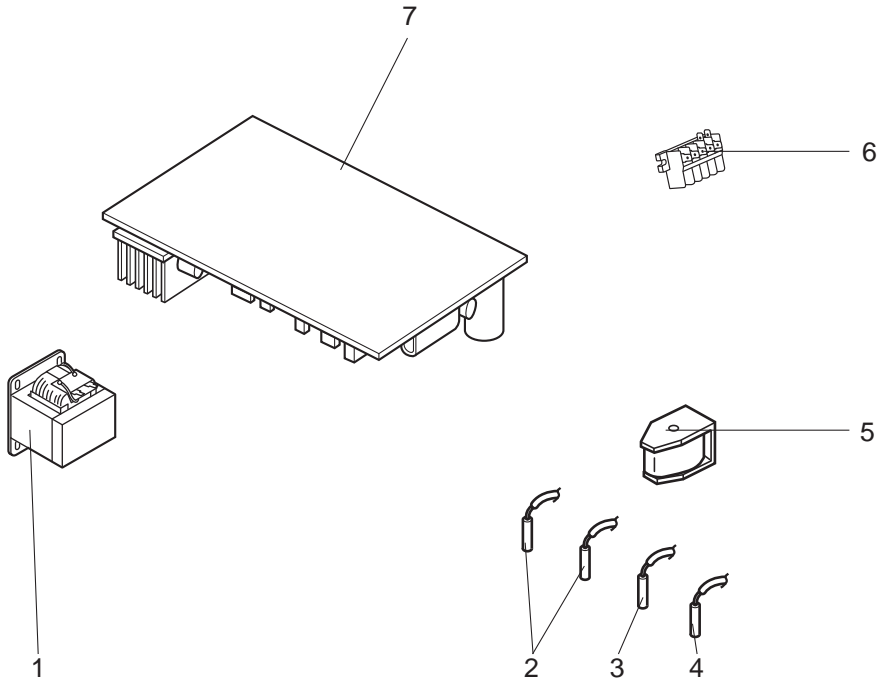
1. The part quantity below indicates the required number of pieces per unit.
2. The circled No. indicates that the part is not shown in the figure.

No.	Part No.	Part Name	MUZ-LN25VG- <sup>[E1]</sup>	MUZ-LN25VG- <sup>[ER1]</sup>	MUZ-LN25VG- <sup>[ET1]</sup>	Symbol in Wiring Diagram	Remarks
1	E22 J63 232	CABINET	1	1	1		
2	E22 J63 531	ICE GUARD	1	1	1		
3	E22 Y84 521	GRILLE	1	1	1		
4	E22 927 501	PROPELLER FAN	1	1	1		
5	E22 Y84 290	BASE	1	1	1		
6	E22 065 506	COMPRESSOR RUBBER SET	3	3	3		3 RUBBERS/SET
7	E22 R81 900	COMPRESSOR	1	1	1	MC	KVB073FYXMC
8	E22 T66 661	STOP VALVE (GAS)	1	1	1		ø9.52
9	E22 T66 662	STOP VALVE (LIQUID)	1	1	1		ø6.35
10	E22 L59 245	SERVICE PANEL	1	1	1		
11	E22 G11 233	BACK PANEL	1	1	1		
12	E22 Y84 640	EXPANSION VALVE	1	1	1		
13	E22 Y84 493	EXPANSION VALVE COIL	1	1	1	LEV	
14	E22 R81 961	4-WAY VALVE	1	1	1		
15	E22 930 079	THERMO HOLDER	1	1	1		
16	E22 930 525	CONDENSER WIRE NET	1	1	1		
17	E22 930 523	CONDENSER NET	1	1	1		
18	E22 G11 293	SEPARATOR	1	1	1		
19	E22 929 515	MOTOR SUPPORT	1	1	1		
20	E22 L85 297	TOP PANEL	1	1	1		
21	E22 Y84 630	OUTDOOR HEAT EXCHANGER	1	1	1		
22	E22 Y84 301	OUTDOOR FAN MOTOR	1	1	1	MF	RC0J50-□□
②3	E22 J47 936	CAPILLARY TUBE	1	1	1		ø4.0×ø2.4×240
②4	E22 838 704	DRAIN SOCKET	1	1	1		



**MUZ-LN25VG - E1, ER1, ET1**

**1-2. OUTDOOR UNIT ELECTRICAL PARTS**





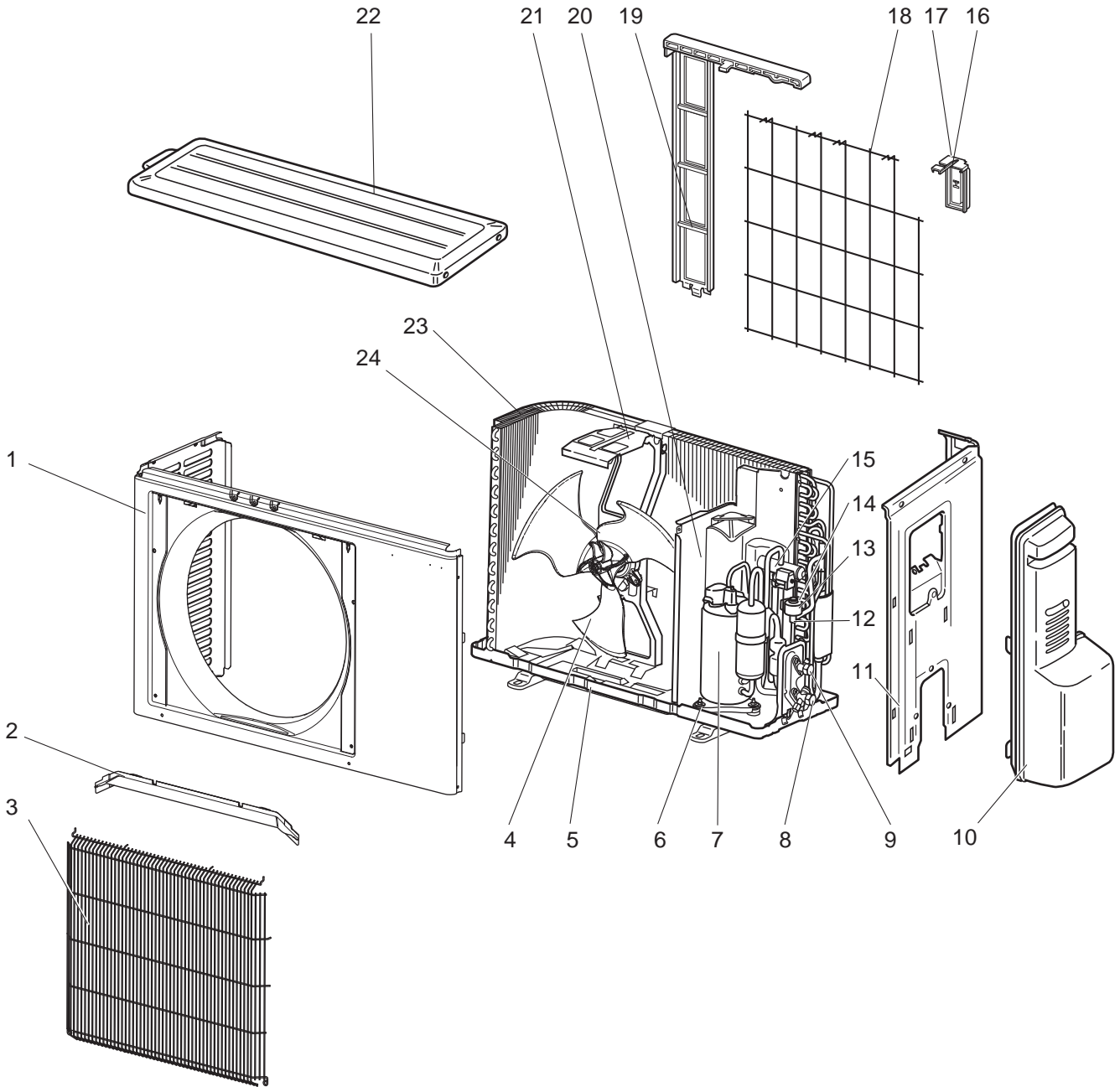
## 1-2. OUTDOOR UNIT ELECTRICAL PARTS

1. The part quantity below indicates the required number of pieces per unit.

No.	Part No.	Part Name	MUZ-LN25VG- <sup>[E1]</sup>	MUZ-LN25VG- <sup>[ER1]</sup>	MUZ-LN25VG- <sup>[ET1]</sup>	Symbol in Wiring Diagram	Remarks
1	E22 G11 337	REACTOR	1	1	1	L61	
2	E22 R81 306	THERMISTOR SET	1	1	1	RT61, RT62	DEFROST, DISCHARGE
3	E22 927 308	AMBIENT TEMPERATURE THERMISTOR	1	1	1	RT65	
4	E22 P72 307	OUTDOOR HEAT EXCHANGER TEMPERATURE THERMISTOR	1	1	1	RT68	
5	E22 R81 490	R.V. COIL	1	1	1	21S4	
6	E22 T95 374	TERMINAL BLOCK	1	1	1	TB1	5 P
7	E22 59E 451	INVERTER P.C. BOARD	1	1	1		Includes heat sink and RT64

MUZ-LN25VG2 - E1, ER1, ET1, E2

1-3. OUTDOOR UNIT STRUCTURAL PARTS AND FUNCTIONAL PARTS



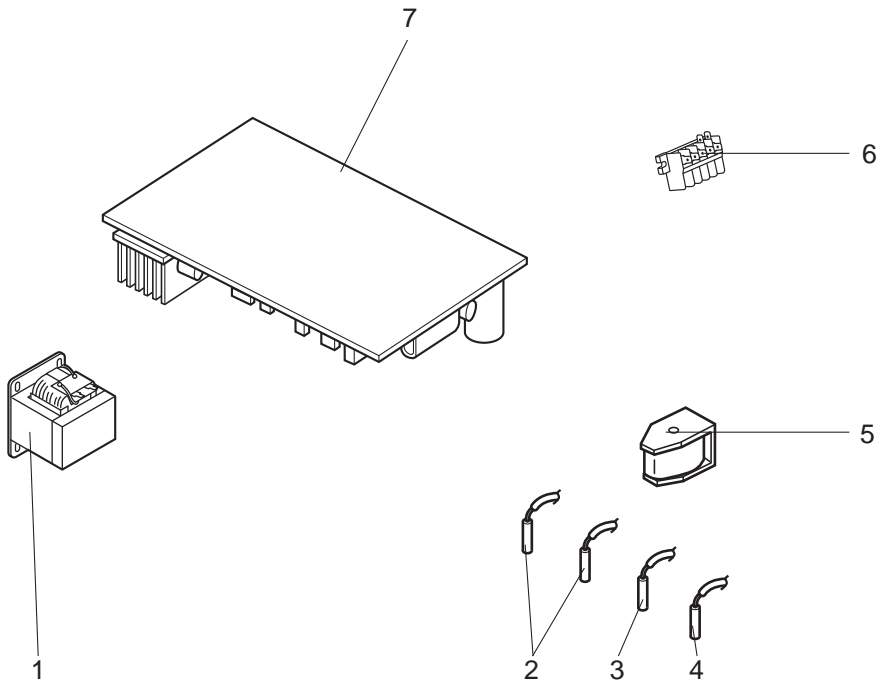
### 1-3. OUTDOOR UNIT STRUCTURAL PARTS AND FUNCTIONAL PARTS

1. The part quantity below indicates the required number of pieces per unit.
2. The circled No. indicates that the part is not shown in the figure.

No.	Part No.	Part Name	MUZ-LN25VG2- <sup>[E1]</sup>	MUZ-LN25VG2- <sup>[ER1]</sup>	MUZ-LN25VG2- <sup>[ET1]</sup>	MUZ-LN25VG2- <sup>[E2]</sup>	Symbol in Wiring Diagram	Remarks
1	E22 J63 232	CABINET	1	1	1	1		
2	E22 J63 531	ICE GUARD	1	1	1	1		
3	E22 Y84 521	GRILLE	1	1	1	1		
4	E22 95B 501	PROPELLER FAN	1	1	1	1		
5	E22 Y84 290	BASE	1	1	1	1		
6	E22 065 506	COMPRESSOR RUBBER SET	3	3	3	3		3 RUBBERS/SET
7	E22 R81 900	COMPRESSOR	1	1	1	1	MC	KVB073FYXMC
8	E22 T66 661	STOP VALVE (GAS)	1	1	1	1		ø9.52
9	E22 T66 662	STOP VALVE (LIQUID)	1	1	1	1		ø6.35
10	E22 L59 245	SERVICE PANEL	1	1	1	1		
11	E22 G11 233	BACK PANEL	1	1	1	1		
12	E22 Y84 640	EXPANSION VALVE	1	1	1	1		
13	E22 Y84 493	EXPANSION VALVE COIL	1	1	1	1	LEV	
14	E22 21G 645	EXPANSION VALVE ASSEMBLY	1	1	1	1		Includes LEV body and capillary tube
15	E22 R81 961	4-WAY VALVE	1	1	1	1		
16	E22 930 079	THERMO HOLDER	1	1	1	1		
17	E27 M71 078	THERMO HOLDER COVER	1	1	1	1		
18	E22 930 525	CONDENSER WIRE NET	1	1	1	1		
19	E22 930 523	CONDENSER NET	1	1	1	1		
20	E22 G11 293	SEPARATOR	1	1	1	1		
21	E22 14F 515	MOTOR SUPPORT	1	1	1	1		
22	E22 L85 297	TOP PANEL	1	1	1	1		
23	E22 Y84 630	OUTDOOR HEAT EXCHANGER	1	1	1	1		
24	E22 97B 301	OUTDOOR FAN MOTOR	1	1	1	1	MF	RC0J50-□□
②⑤	E22 J47 936	CAPILLARY TUBE	1	1	1	1		ø4.0xø2.4x240
②⑥	E22 838 704	DRAIN SOCKET	1	1	1	1		

MUZ-LN25VG2 - E1, ER1, ET1, E2

1-4. OUTDOOR UNIT ELECTRICAL PARTS







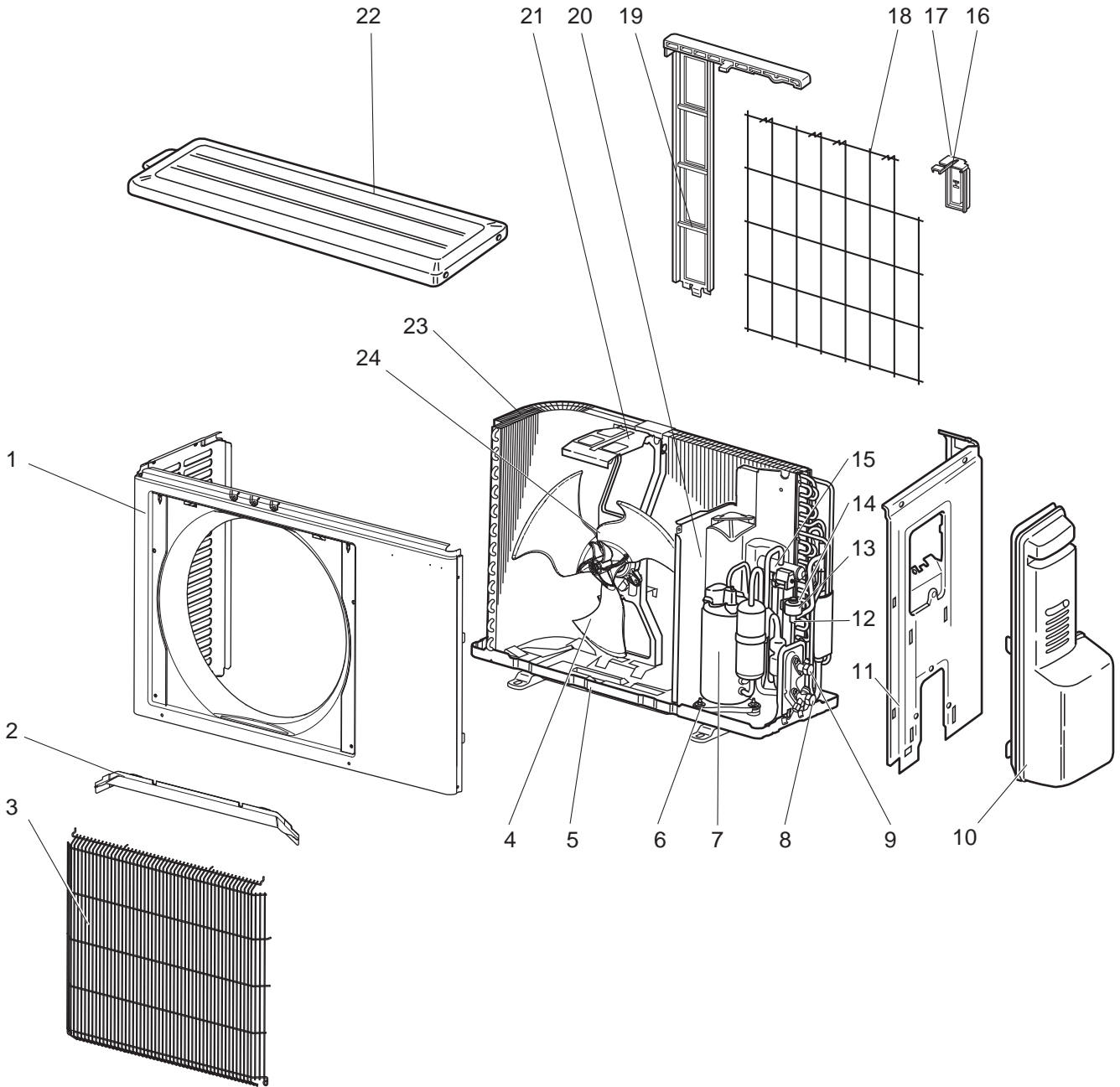
### 1-4. OUTDOOR UNIT ELECTRICAL PARTS

1. The part quantity below indicates the required number of pieces per unit.

No.	Part No.	Part Name	MUZ-LN25VG2- <sup>[E1]</sup>	MUZ-LN25VG2- <sup>[ER1]</sup>	MUZ-LN25VG2- <sup>[ET1]</sup>	MUZ-LN25VG2- <sup>[E2]</sup>	Symbol in Wiring Diagram	Remarks
1	E22 G10 337	REACTOR	1	1	1	1	L61	
2	E22 R81 306	THERMISTOR SET	1	1	1	1	RT61, RT62	DEFROST, DISCHARGE
3	E22 927 308	AMBIENT TEMPERATURE THERMISTOR	1	1	1	1	RT65	
4	E22 P72 307	OUTDOOR HEAT EXCHANGER TEMPERATURE THERMISTOR	1	1	1	1	RT68	
5	E22 R81 490	R.V. COIL	1	1	1	1	21S4	
6	E22 T95 374	TERMINAL BLOCK	1	1	1	1	TB1	5 P
7	E22 30J 451	INVERTER P.C. BOARD	1	1	1	1		Includes heat sink and RT64

MUZ-LN25VG2 - ER2, ET2, E3

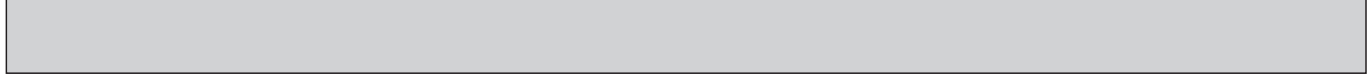
### 1-5. OUTDOOR UNIT STRUCTURAL PARTS AND FUNCTIONAL PARTS



## 1-5. OUTDOOR UNIT STRUCTURAL PARTS AND FUNCTIONAL PARTS

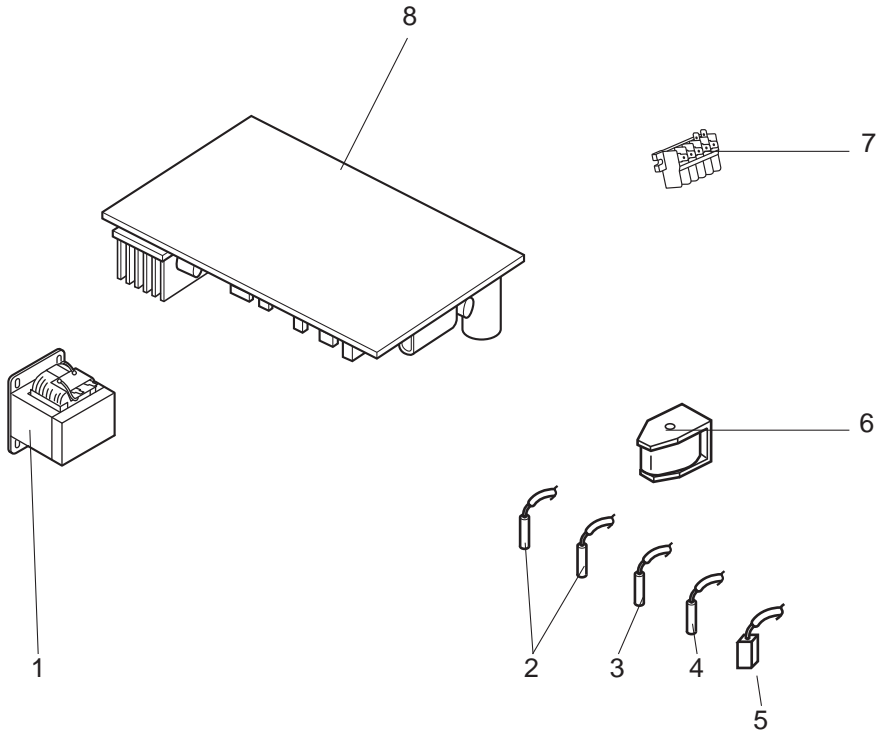
1. The part quantity below indicates the required number of pieces per unit.
2. The circled No. indicates that the part is not shown in the figure.

No.	Part No.	Part Name	MUZ-LN25VG2- <sup>ER2</sup>	MUZ-LN25VG2- <sup>ET2</sup>	MUZ-LN25VG2- <sup>E3</sup>	Symbol in Wiring Diagram	Remarks
1	E22 J63 232	CABINET	1	1	1		
2	E22 J63 531	ICE GUARD	1	1	1		
3	E22 Y84 521	GRILLE	1	1	1		
4	E22 95B 501	PROPELLER FAN	1	1	1		
5	E22 44P 290	BASE	1	1	1		
6	E22 065 506	COMPRESSOR RUBBER SET	3	3	3		3 RUBBERS/SET
7	E22 R81 900	COMPRESSOR	1	1	1	MC	KVB073FYXMC
8	E22 T66 661	STOP VALVE (GAS)	1	1	1		ø9.52
9	E22 T66 662	STOP VALVE (LIQUID)	1	1	1		ø6.35
10	E22 M09 245	SERVICE PANEL	1	1	1		
11	E22 G15 233	BACK PANEL		1	1		
11	E22 G11 233	BACK PANEL	1				
12	E22 Y84 640	EXPANSION VALVE	1	1	1		
13	E22 Y84 493	EXPANSION VALVE COIL	1	1	1	LEV	
14	E22 21G 645	EXPANSION VALVE ASSEMBLY	1	1	1		Includes LEV body and capillary tube
15	E22 R81 961	4-WAY VALVE	1	1	1		
16	E22 930 079	THERMO HOLDER	1	1	1		
17	E27 M71 078	THERMO HOLDER COVER	1	1	1		
18	E22 930 525	CONDENSER WIRE NET	1	1	1		
19	E22 930 523	CONDENSER NET	1	1	1		
20	E22 G11 293	SEPARATOR	1	1	1		
21	E22 14F 515	MOTOR SUPPORT	1	1	1		
22	E22 L85 297	TOP PANEL	1	1	1		
23	E22 Y84 630	OUTDOOR HEAT EXCHANGER	1	1	1		
24	E22 97B 301	OUTDOOR FAN MOTOR	1	1	1	MF	RC0J50-□□
②⑤	E22 P72 936	CAPILLARY TUBE	1	1	1		ø4.0xø2.4x240
②⑥	E22 838 704	DRAIN SOCKET	1	1	1		
②⑦	E22 L05 508	PROPELLER FAN NUT	1	1	1		



MUZ-LN25VG2 - ER2, ET2, E3

1-6. OUTDOOR UNIT ELECTRICAL PARTS





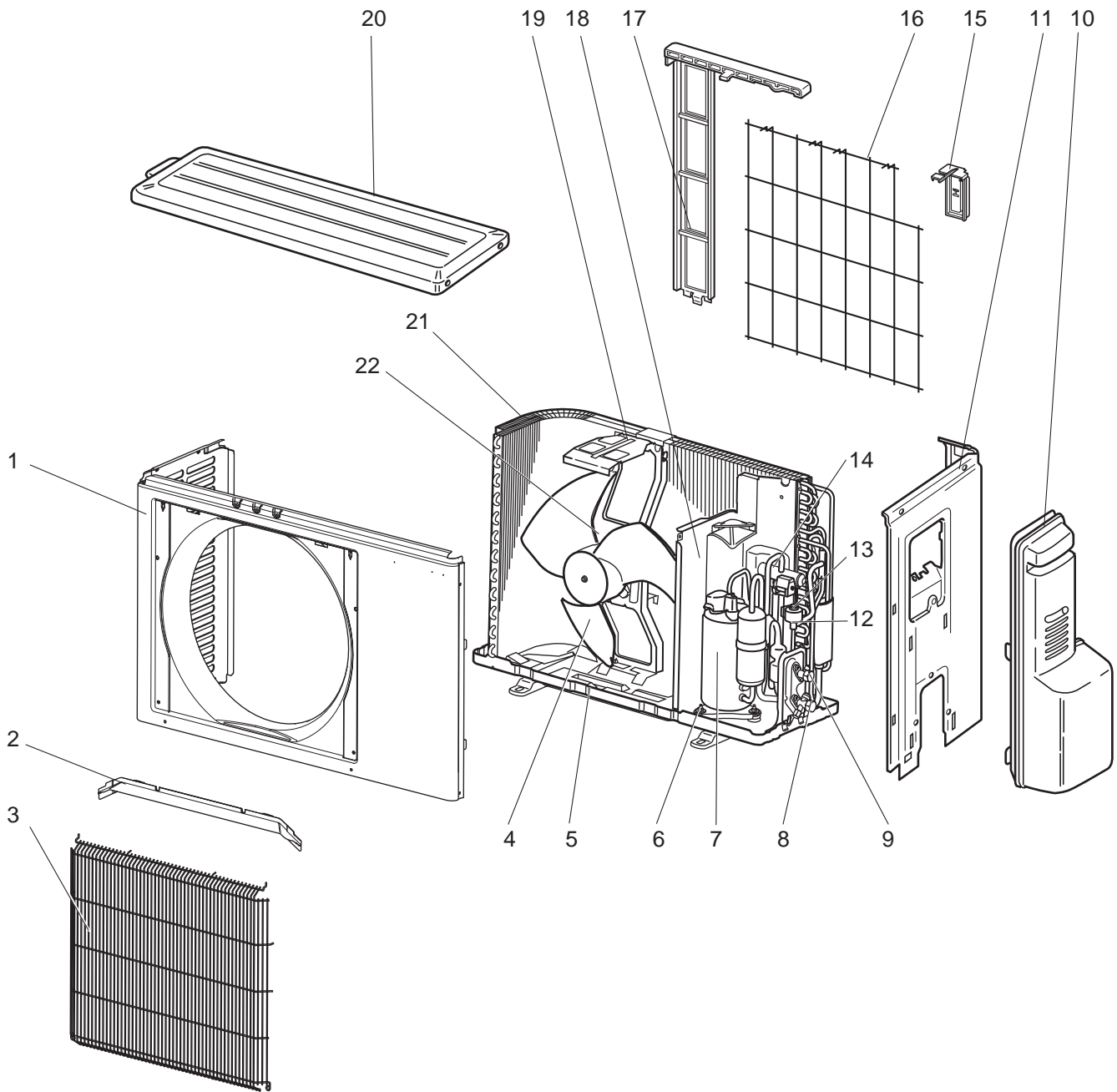
## 1-6. OUTDOOR UNIT ELECTRICAL PARTS

1. The part quantity below indicates the required number of pieces per unit.

No.	Part No.	Part Name	MUZ-LN25VG2- <sup>ER2</sup>	MUZ-LN25VG2- <sup>ET2</sup>	MUZ-LN25VG2- <sup>E3</sup>	Symbol in Wiring Diagram	Remarks
1	E22 26N 337	REACTOR	1	1	1	L61	
2	E22 R81 306	THERMISTOR SET	1	1	1	RT61, RT62	DEFROST, DISCHARGE
3	E22 927 308	AMBIENT TEMPERATURE THERMISTOR	1	1	1	RT65	
4	E22 P72 307	OUTDOOR HEAT EXCHANGER TEMPERATURE THERMISTOR	1	1	1	RT68	
5	E22 41X 381	COMPRESSOR PROTECTOR	1	1	1	26C	
6	E22 R81 490	R.V. COIL	1	1	1	21S4	
7	E22 10L 374	TERMINAL BLOCK	1	1	1	TB1	5 P
8	E22 55Y 451	INVERTER P.C. BOARD	1	1	1		Includes heat sink and RT64




MUZ-LN35VG - E1, ER1, ET1

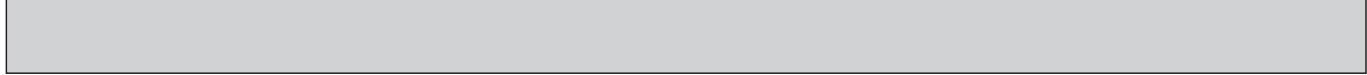
1-7. OUTDOOR UNIT STRUCTURAL PARTS AND FUNCTIONAL PARTS



## 1-7. OUTDOOR UNIT STRUCTURAL PARTS AND FUNCTIONAL PARTS

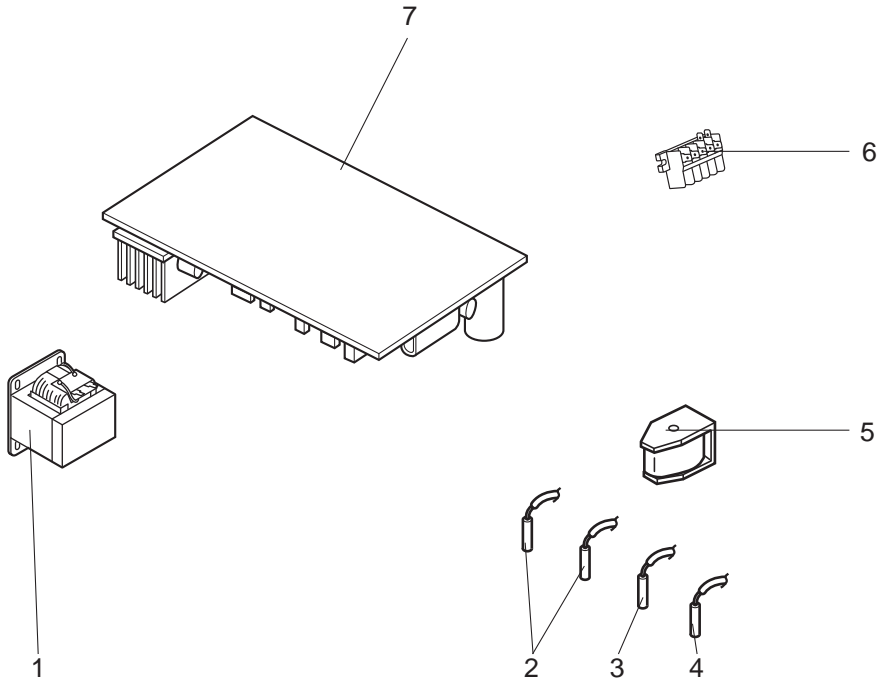
1. The part quantity below indicates the required number of pieces per unit.
2. The circled No. indicates that the part is not shown in the figure.

No.	Part No.	Part Name	MUZ-LN35VG- 	MUZ-LN35VG- 	MUZ-LN35VG- 	Symbol in Wiring Diagram	Remarks
1	E22 J63 232	CABINET	1	1	1		
2	E22 J63 531	ICE GUARD	1	1	1		
3	E22 Y84 521	GRILLE	1	1	1		
4	E22 927 501	PROPELLER FAN	1	1	1		
5	E22 Y84 290	BASE	1	1	1		
6	E22 C34 506	COMPRESSOR RUBBER SET	3	3	3		3 RUBBERS/SET
7	E22 Y85 900	COMPRESSOR	1	1	1	MC	SVB092FBAMT
8	E22 T66 661	STOP VALVE (GAS)	1	1	1		ø9.52
9	E22 T66 662	STOP VALVE (LIQUID)	1	1	1		ø6.35
10	E22 L59 245	SERVICE PANEL	1	1	1		
11	E22 G15 233	BACK PANEL	1	1	1		
12	E22 Y84 640	EXPANSION VALVE	1	1	1		
13	E22 Y84 493	EXPANSION VALVE COIL	1	1	1	LEV	
14	E22 R81 961	4-WAY VALVE	1	1	1		
15	E22 930 079	THERMO HOLDER	1	1	1		
16	E22 930 525	CONDENSER WIRE NET	1	1	1		
17	E22 930 523	CONDENSER NET	1	1	1		
18	E22 G11 293	SEPARATOR	1	1	1		
19	E22 929 515	MOTOR SUPPORT	1	1	1		
20	E22 L85 297	TOP PANEL	1	1	1		
21	E22 Y84 630	OUTDOOR HEAT EXCHANGER	1	1	1		
22	E22 Y84 301	OUTDOOR FAN MOTOR	1	1	1	MF	RC0J50-□□
②③	E22 J47 936	CAPILLARY TUBE	1	1	1		ø4.0×ø2.4×240
②④	E22 838 704	DRAIN SOCKET	1	1	1		

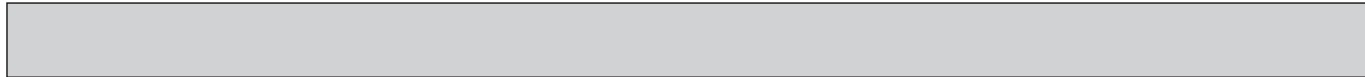


MUZ-LN35VG - E1, ER1, ET1

1-8. OUTDOOR UNIT ELECTRICAL PARTS










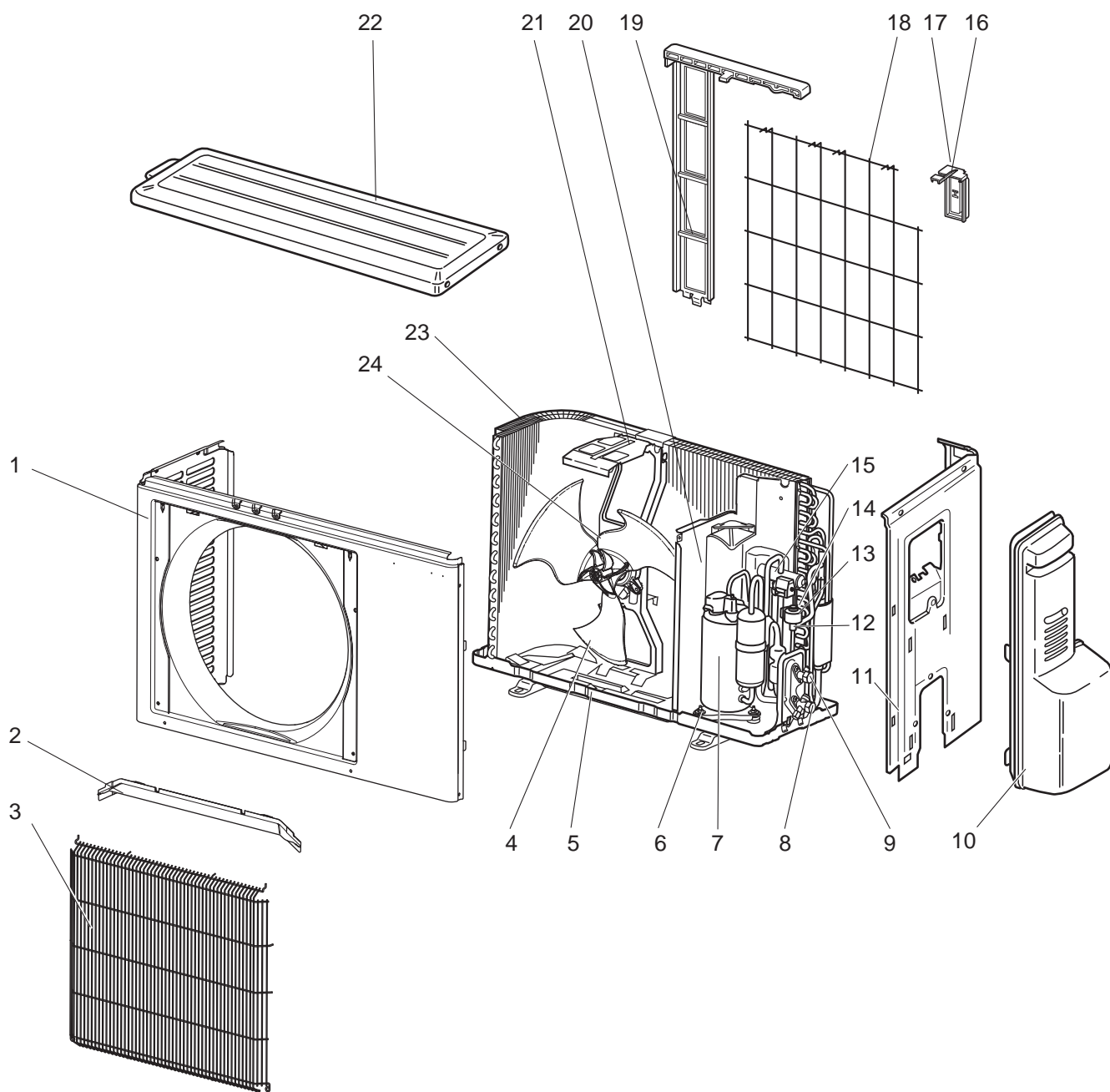
## 1-8. OUTDOOR UNIT ELECTRICAL PARTS

1. The part quantity below indicates the required number of pieces per unit.

No.	Part No.	Part Name	MUZ-LN35VG- 	MUZ-LN35VG- 	MUZ-LN35VG- 	Symbol in Wiring Diagram	Remarks
1	E22 G11 337	REACTOR	1	1	1	L61	
2	E22 R81 306	THERMISTOR SET	1	1	1	RT61, RT62	DEFROST, DISCHARGE
3	E22 927 308	AMBIENT TEMPERATURE THERMISTOR	1	1	1	RT65	
4	E22 P72 307	OUTDOOR HEAT EXCHANGER TEMPERATURE THERMISTOR	1	1	1	RT68	
5	E22 R81 490	R.V. COIL	1	1	1	21S4	
6	E22 T95 374	TERMINAL BLOCK	1	1	1	TB1	5 P
7	E22 60E 451	INVERTER P.C. BOARD	1	1	1		Includes heat sink and RT64

MUZ-LN35VG2 - E1, ER1, ET1, E2

### 1-9. OUTDOOR UNIT STRUCTURAL PARTS AND FUNCTIONAL PARTS



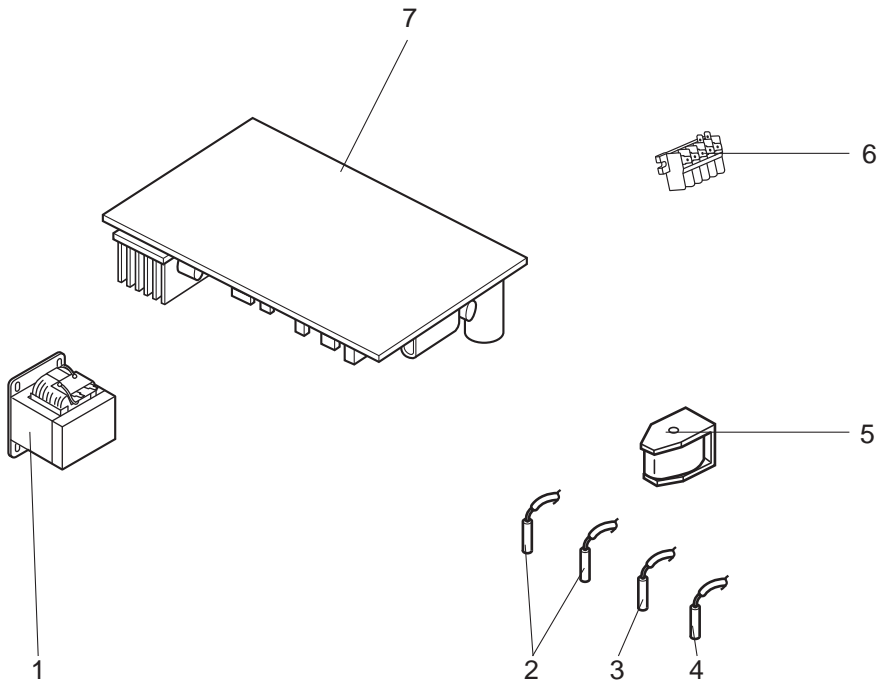
## 1-9. OUTDOOR UNIT STRUCTURAL PARTS AND FUNCTIONAL PARTS

1. The part quantity below indicates the required number of pieces per unit.
2. The circled No. indicates that the part is not shown in the figure.

No.	Part No.	Part Name	MUZ-LN35VG2- <sup>[E]</sup>	MUZ-LN35VG2- <sup>[ER1]</sup>	MUZ-LN35VG2- <sup>[ET1]</sup>	MUZ-LN35VG2- <sup>[E2]</sup>	Symbol in Wiring Diagram	Remarks
1	E22 J63 232	CABINET	1	1	1	1		
2	E22 J63 531	ICE GUARD	1	1	1	1		
3	E22 Y84 521	GRILLE	1	1	1	1		
4	E22 95B 501	PROPELLER FAN	1	1	1	1		
5	E22 Y84 290	BASE	1	1	1	1		
6	E22 C34 506	COMPRESSOR RUBBER SET	3	3	3	3		3 RUBBERS/SET
7	E22 Y85 900	COMPRESSOR	1	1	1	1	MC	SVB092FBAMT
8	E22 T66 661	STOP VALVE (GAS)	1	1	1	1		ø9.52
9	E22 T66 662	STOP VALVE (LIQUID)	1	1	1	1		ø6.35
10	E22 L59 245	SERVICE PANEL	1	1	1	1		
11	E22 G15 233	BACK PANEL	1	1	1	1		
12	E22 Y84 640	EXPANSION VALVE	1	1	1	1		
13	E22 Y84 493	EXPANSION VALVE COIL	1	1	1	1	LEV	
14	E22 21G 645	EXPANSION VALVE ASSEMBLY	1	1	1	1		Includes LEV body and capillary tube
15	E22 R81 961	4-WAY VALVE	1	1	1	1		
16	E22 930 079	THERMO HOLDER	1	1	1	1		
17	E27 M71 078	THERMO HOLDER COVER	1	1	1	1		
18	E22 930 525	CONDENSER WIRE NET	1	1	1	1		
19	E22 930 523	CONDENSER NET	1	1	1	1		
20	E22 G11 293	SEPARATOR	1	1	1	1		
21	E22 14F 515	MOTOR SUPPORT	1	1	1	1		
22	E22 L85 297	TOP PANEL	1	1	1	1		
23	E22 Y84 630	OUTDOOR HEAT EXCHANGER	1	1	1	1		
24	E22 97B 301	OUTDOOR FAN MOTOR	1	1	1	1	MF	RC0J50-□□
②⑤	E22 J47 936	CAPILLARY TUBE	1	1	1	1		ø4.0xø2.4x240
②⑥	E22 838 704	DRAIN SOCKET	1	1	1	1		

MUZ-LN35VG2 - E1, ER1, ET1, E2

1-10. OUTDOOR UNIT ELECTRICAL PARTS





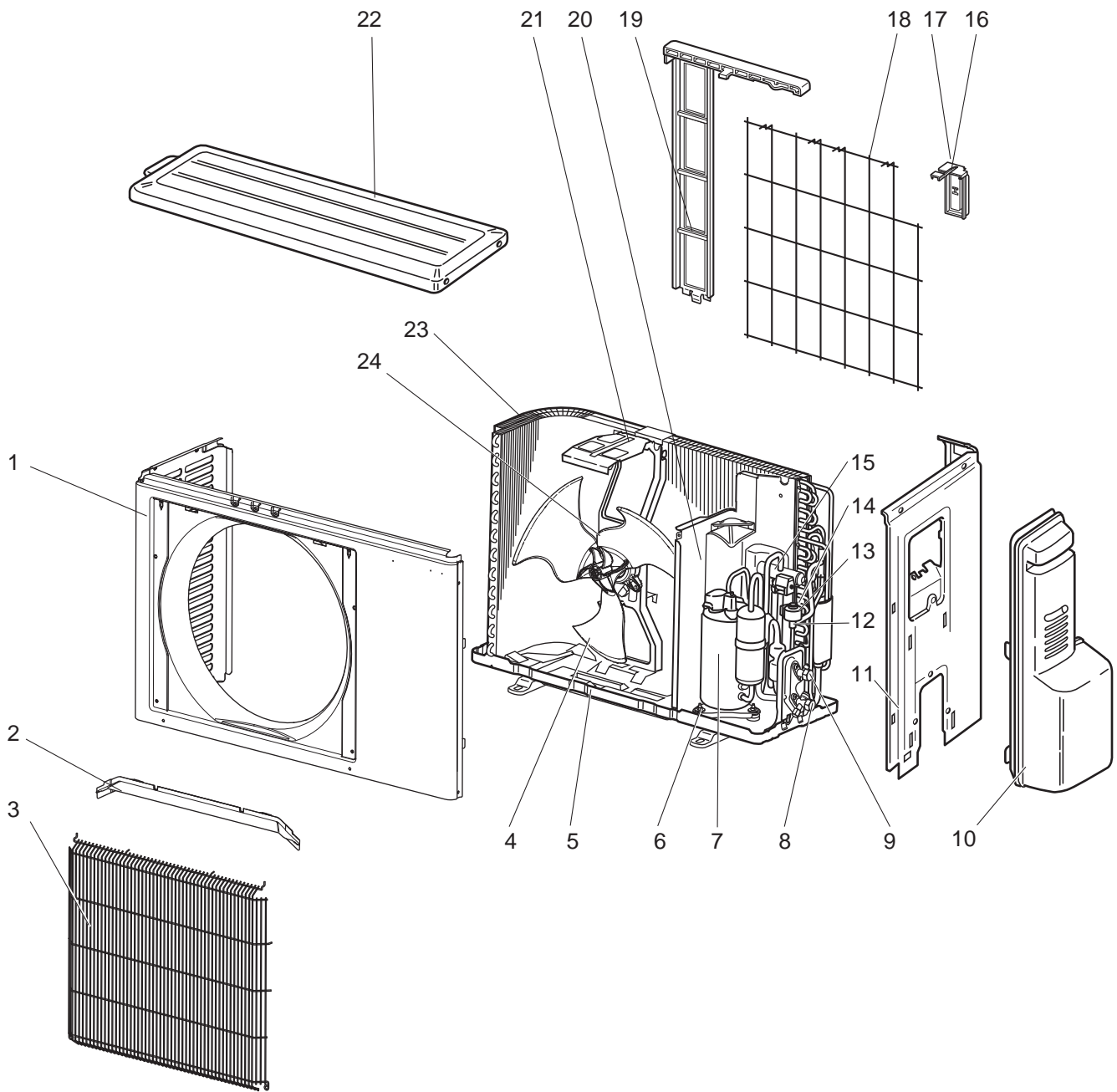
## 1-10. OUTDOOR UNIT ELECTRICAL PARTS

1. The part quantity below indicates the required number of pieces per unit.

No.	Part No.	Part Name	MUZ-LN35VG2- <sup>[E1]</sup>	MUZ-LN35VG2- <sup>[ER1]</sup>	MUZ-LN35VG2- <sup>[ET1]</sup>	MUZ-LN35VG2- <sup>[E2]</sup>	Symbol in Wiring Diagram	Remarks
1	E22 20A 337	REACTOR	1	1	1	1	L61	
2	E22 R81 306	THERMISTOR SET	1	1	1	1	RT61, RT62	DEFROST, DISCHARGE
3	E22 927 308	AMBIENT TEMPERATURE THERMISTOR	1	1	1	1	RT65	
4	E22 P72 307	OUTDOOR HEAT EXCHANGER TEMPERATURE THERMISTOR	1	1	1	1	RT68	
5	E22 R81 490	R.V. COIL	1	1	1	1	21S4	
6	E22 T95 374	TERMINAL BLOCK	1	1	1	1	TB1	5 P
7	E22 31J 451	INVERTER P.C. BOARD	1	1	1	1		Includes heat sink and RT64

MUZ-LN35VG2 - ER2, ET2, E3

1-11. OUTDOOR UNIT STRUCTURAL PARTS AND FUNCTIONAL PARTS



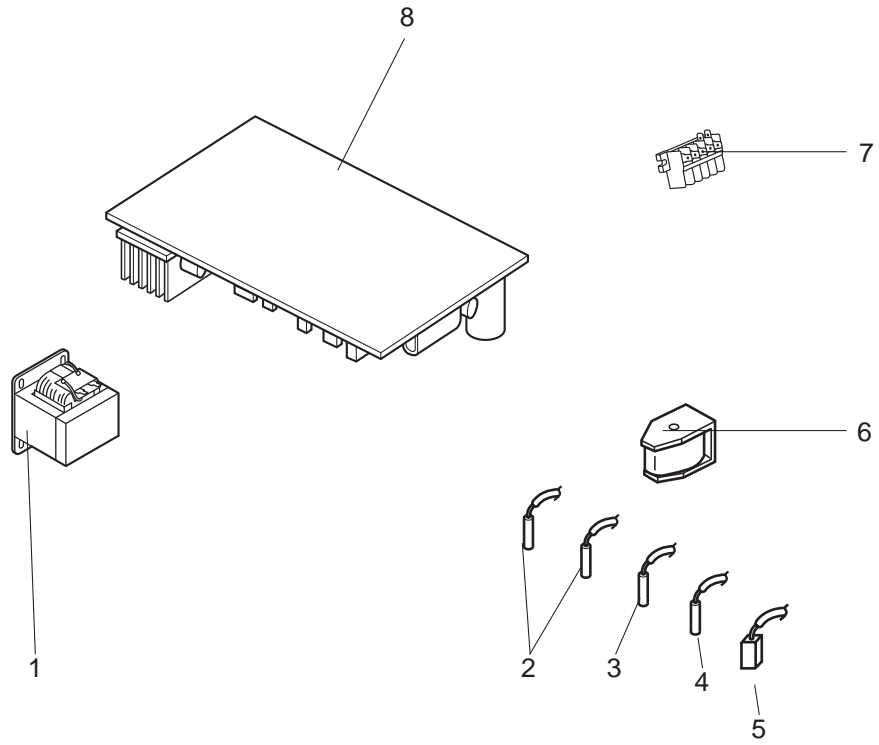
## 1-11. OUTDOOR UNIT STRUCTURAL PARTS AND FUNCTIONAL PARTS

1. The part quantity below indicates the required number of pieces per unit.
2. The circled No. indicates that the part is not shown in the figure.

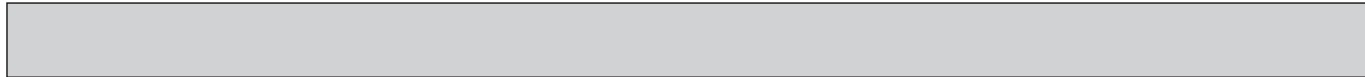
No.	Part No.	Part Name	MUZ-LN35VG2- <sup>ER2</sup>	MUZ-LN35VG2- <sup>ET2</sup>	MUZ-LN35VG2- <sup>E3</sup>	Symbol in Wiring Diagram	Remarks
1	E22 J63 232	CABINET	1	1	1		
2	E22 J63 531	ICE GUARD	1	1	1		
3	E22 Y84 521	GRILLE	1	1	1		
4	E22 95B 501	PROPELLER FAN	1	1	1		
5	E22 44P 290	BASE	1	1	1		
6	E22 C34 506	COMPRESSOR RUBBER SET	3	3	3		3 RUBBERS/SET
7	E22 44W 900	COMPRESSOR	1	1	1	MC	SVB092FBAMT
8	E22 T66 661	STOP VALVE (GAS)	1	1	1		ø9.52
9	E22 T66 662	STOP VALVE (LIQUID)	1	1	1		ø6.35
10	E22 M09 245	SERVICE PANEL	1	1	1		
11	E22 G15 233	BACK PANEL	1	1	1		
12	E22 Y84 640	EXPANSION VALVE	1	1	1		
13	E22 Y84 493	EXPANSION VALVE COIL	1	1	1	LEV	
14	E22 21G 645	EXPANSION VALVE ASSEMBLY	1	1	1		Includes LEV body and capillary tube
15	E22 R81 961	4-WAY VALVE	1	1	1		
16	E22 930 079	THERMO HOLDER	1	1	1		
17	E27 M71 078	THERMO HOLDER COVER	1	1	1		
18	E22 930 525	CONDENSER WIRE NET	1	1	1		
19	E22 930 523	CONDENSER NET	1	1	1		
20	E22 G11 293	SEPARATOR	1	1	1		
21	E22 14F 515	MOTOR SUPPORT	1	1	1		
22	E22 L85 297	TOP PANEL	1	1	1		
23	E22 Y84 630	OUTDOOR HEAT EXCHANGER	1	1	1		
24	E22 97B 301	OUTDOOR FAN MOTOR	1	1	1	MF	RC0J50-□□
25	E22 P72 936	CAPILLARY TUBE	1	1	1		ø4.0×ø2.4×240
26	E22 838 704	DRAIN SOCKET	1	1	1		
27	E27 L05 508	PROPELLER FAN NUT	1	1	1		

MUZ-LN35VG2 - ER2, ET2, E3

1-12. OUTDOOR UNIT ELECTRICAL PARTS







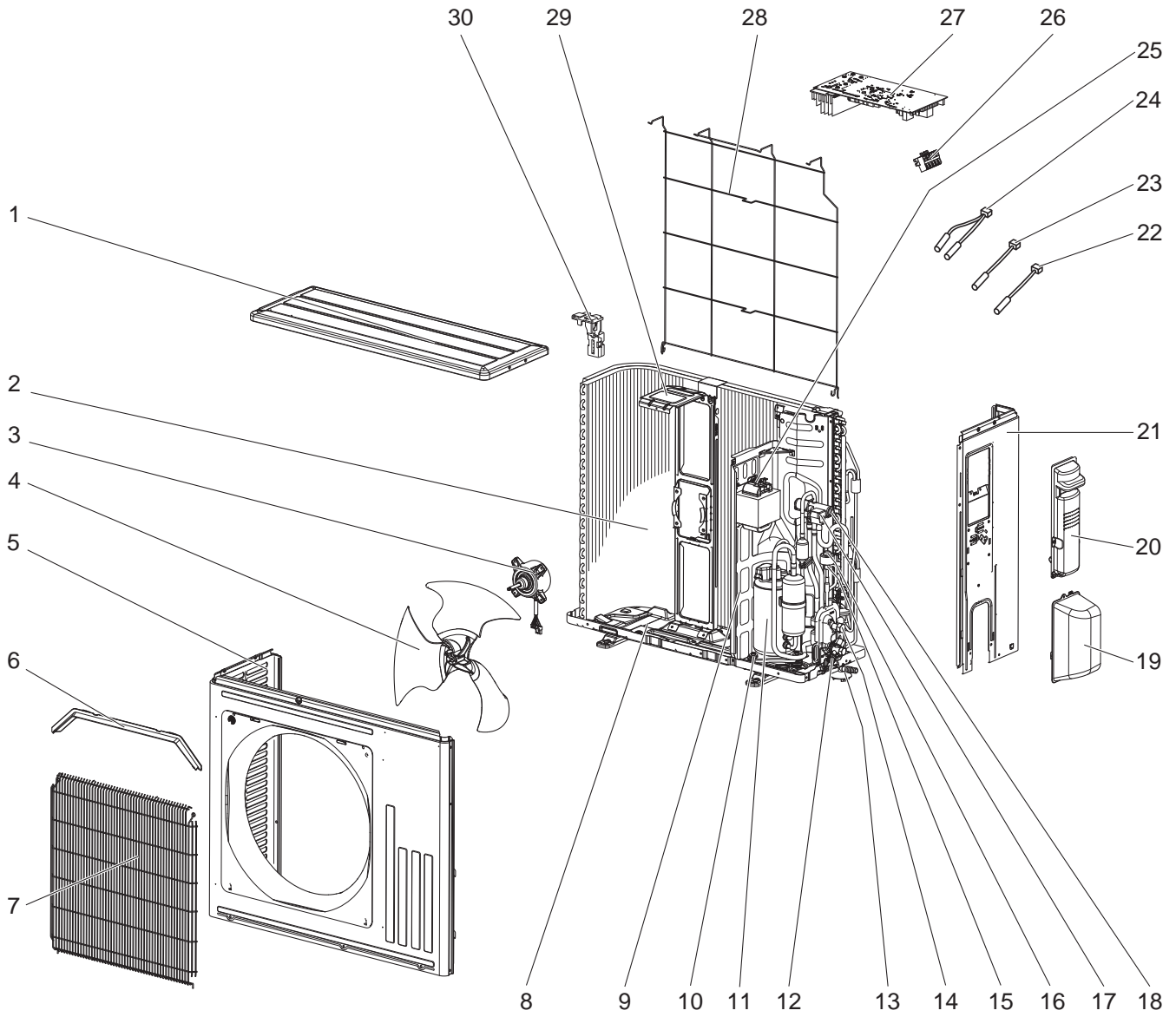
## 1-12. OUTDOOR UNIT ELECTRICAL PARTS

1. The part quantity below indicates the required number of pieces per unit.

No.	Part No.	Part Name	MUZ-LN35VG2- <sup>ER2</sup>	MUZ-LN35VG2- <sup>ET2</sup>	MUZ-LN35VG2- <sup>E3</sup>	Symbol in Wiring Diagram	Remarks
1	E22 20A 337	REACTOR	1	1	1	L61	
2	E22 R81 306	THERMISTOR SET	1	1	1	RT61, RT62	DEFROST, DISCHARGE
3	E22 927 308	AMBIENT TEMPERATURE THERMISTOR	1	1	1	RT65	
4	E22 P72 307	OUTDOOR HEAT EXCHANGER TEMPERATURE THERMISTOR	1	1	1	RT68	
5	E22 41X 381	COMPRESSOR PROTECTOR	1	1	1	26C	
6	E22 R81 490	R.V. COIL	1	1	1	21S4	
7	E22 10L 374	TERMINAL BLOCK	1	1	1	TB1	5 P
8	E22 56Y 451	INVERTER P.C. BOARD	1	1	1		Includes heat sink and RT64

**MUZ-LN50VG - E1, ER1, ET1**

**1-13. OUTDOOR UNIT STRUCTURAL PARTS, ELECTRICAL PARTS AND FUNCTIONAL PARTS**



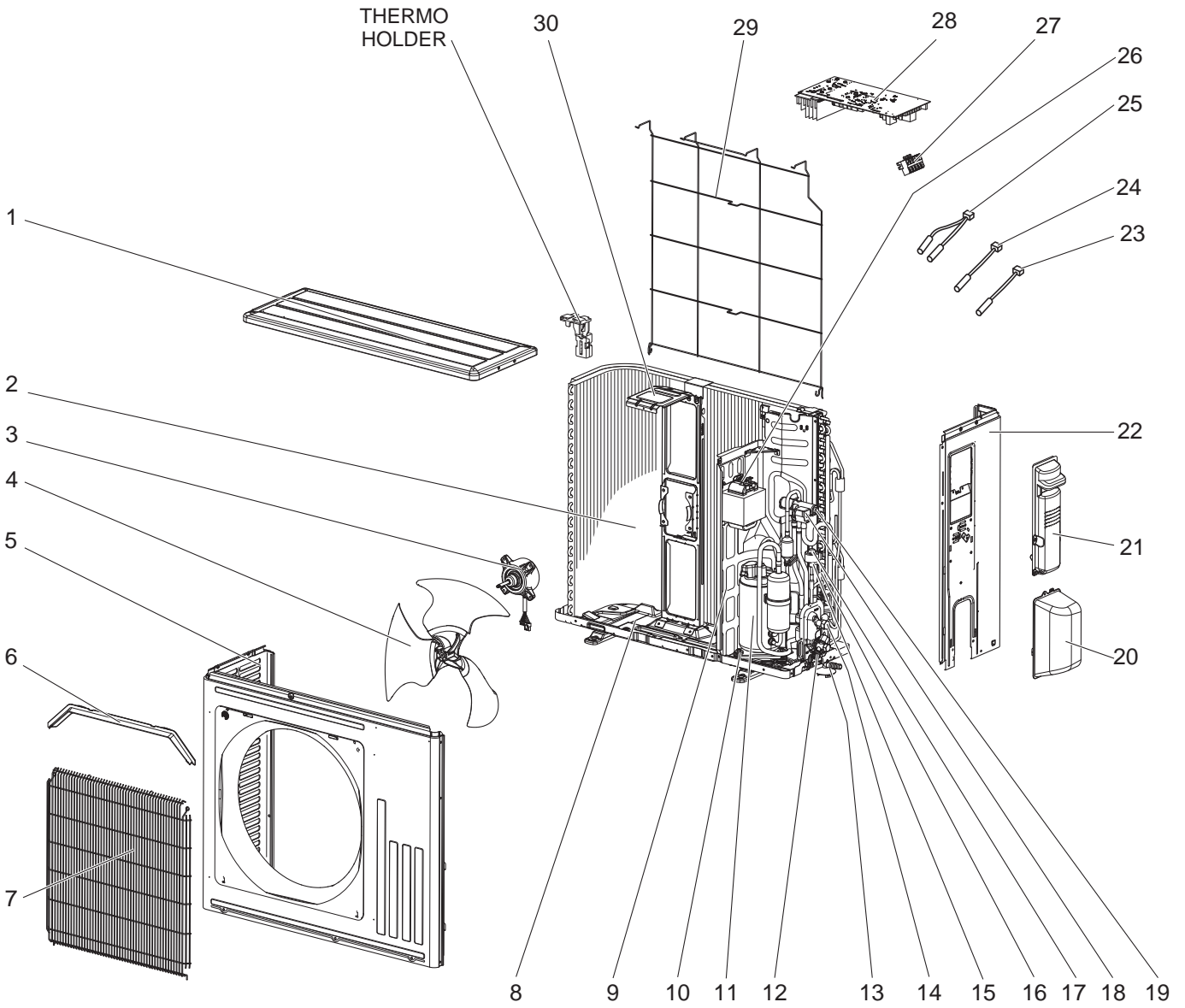
## 1-13. OUTDOOR UNIT STRUCTURAL PARTS, ELECTRICAL PARTS AND FUNCTIONAL PARTS

1. The part quantity below indicates the required number of pieces per unit.  
2. The circled No. indicates that the part is not shown in the figure.

No.	Part No.	Part Name	MUZ-LN50VG- <sup>[E1]</sup>	MUZ-LN50VG- <sup>[ER1]</sup>	MUZ-LN50VG- <sup>[ET1]</sup>	Symbol in Wiring Diagram	Remarks
1	E22 Y86 297	TOP PANEL	1	1	1		
2	E22 Y86 630	OUTDOOR HEAT EXCHANGER	1	1	1		
3	E22 Y86 301	OUTDOOR FAN MOTOR	1	1	1	MF	RC0J50-□□
4	E22 Y86 501	PROPELLER FAN	1	1	1		
5	E22 Y86 232	CABINET	1	1	1		
6	E22 Y86 531	ICE GUARD	1	1	1		
7	E22 Y86 521	GRILLE	1	1	1		
8	E22 Y84 290	BASE	1	1	1		
9	E22 Y86 293	SEPARATOR	1	1	1		
10	E22 C34 506	COMPRESSOR RUBBER SET	3	3	3		3 RUBBERS/SET
11	E22 R83 900	COMPRESSOR	1	1	1	MC	SVB130FBBMT
12	E22 Y86 661	STOP VALVE (GAS)	1	1	1		ø9.52
13	E22 838 704	DRAIN SOCKET	1	1	1		
14	E22 Y86 662	STOP VALVE (LIQUID)	1	1	1		ø6.35
15	E22 Y84 640	EXPANSION VALVE	1	1	1		
16	E22 Y84 493	EXPANSION VALVE COIL	1	1	1	LEV	
17	E22 Y86 490	R.V. COIL	1	1	1	21S4	
18	E22 J44 961	4-WAY VALVE	1	1	1		
19	E22 Y86 650	VALVE COVER	1	1	1		
20	E22 Y86 245	SERVICE PANEL	1	1	1		
21	E22 Y86 233	BACK PANEL	1	1	1		
22	E22 Y86 309	AMBIENT TEMPERATURE THERMISTOR	1	1	1	RT65	
23	E22 C34 307	OUTDOOR HEAT EXCHANGER TEMPERATURE THERMISTOR	1	1	1	RT68	
24	E22 Y86 306	THERMISTOR SET	1	1	1	RT61, RT62	DEFROST, DISCHARGE
25	E22 H21 337	REACTOR	1	1	1	L61	
26	E22 T95 374	TERMINAL BLOCK	1	1	1	TB1	5 P
27	E22 61E 451	INVERTER P.C. BOARD	1	1	1		Includes heat sink and RT64
28	E22 Y86 525	CONDENSER WIRE NET	1	1	1		
29	E22 Y86 515	MOTOR SUPPORT	1	1	1		
30	E22 22A 079	THERMO HOLDER	1	1	1		
①	E22 J47 936	CAPILLARY TUBE	1	1	1		ø4.0 × ø2.4 × 240
②	E22 F35 936	CAPILLARY TUBE	2	2	2		ø3.0 × ø2.0 × 210

MUZ-LN50VG2 - E1, ER1, ET1, E2

1-14. OUTDOOR UNIT STRUCTURAL PARTS, ELECTRICAL PARTS AND FUNCTIONAL PARTS



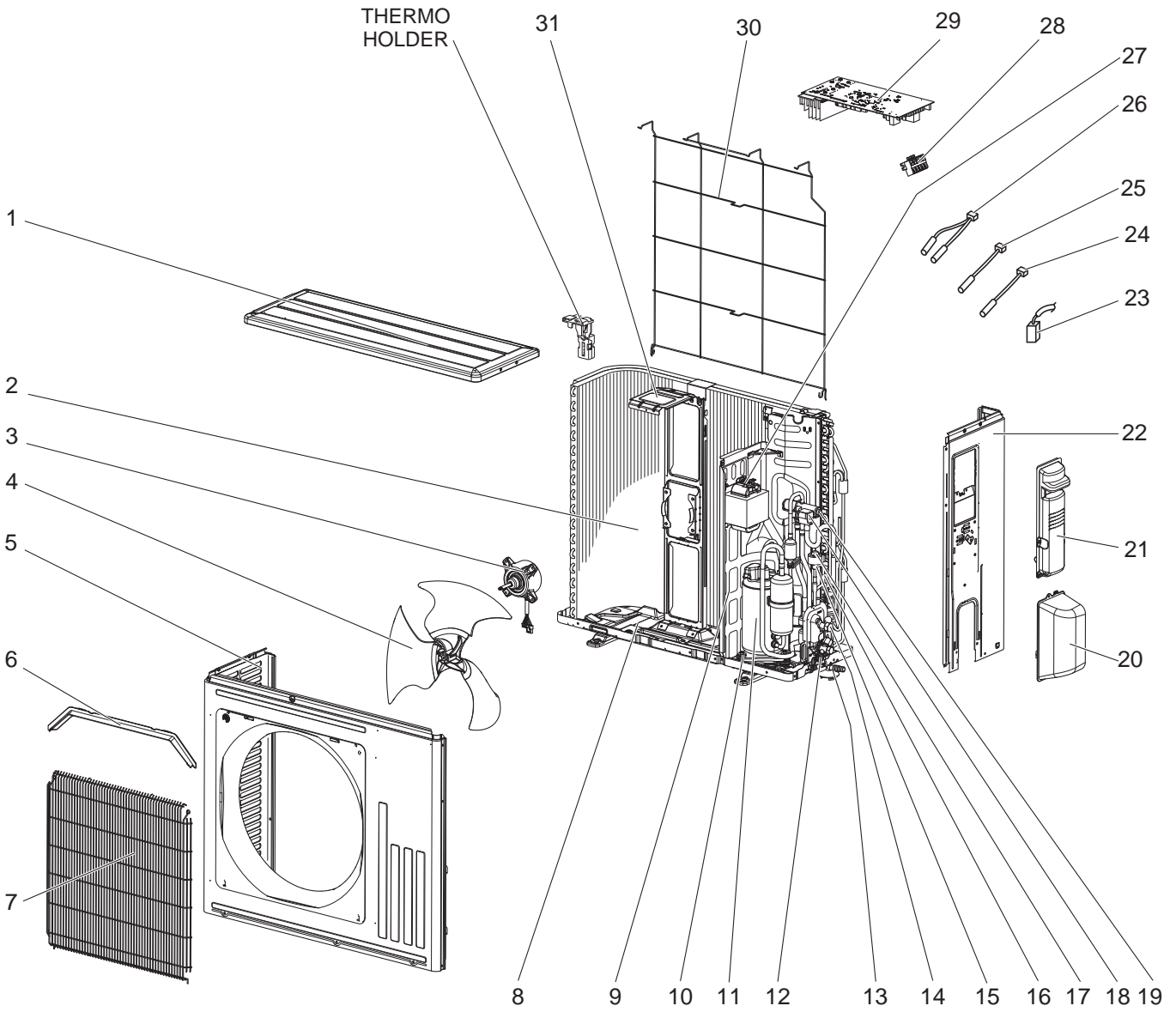
## 1-14. OUTDOOR UNIT STRUCTURAL PARTS, ELECTRICAL PARTS AND FUNCTIONAL PARTS

1. The part quantity below indicates the required number of pieces per unit.
2. The circled No. indicates that the part is not shown in the figure.

No.	Part No.	Part Name	MUZ-LN50VG2- <sup>[E1]</sup>	MUZ-LN50VG2- <sup>[ER1]</sup>	MUZ-LN50VG2- <sup>[ET1]</sup>	MUZ-LN50VG2- <sup>[E2]</sup>	Symbol in Wiring Diagram	Remarks
1	E22 Y86 297	TOP PANEL	1	1	1	1		
2	E22 Y86 630	OUTDOOR HEAT EXCHANGER	1	1	1	1		
3	E22 Y86 301	OUTDOOR FAN MOTOR	1	1	1	1	MF	RC0J50-□□
4	E22 Y86 501	PROPELLER FAN	1	1	1	1		
5	E22 Y86 232	CABINET	1	1	1	1		
6	E22 Y86 531	ICE GUARD	1	1	1	1		
7	E22 Y86 521	GRILLE	1	1	1	1		
8	E22 Y84 290	BASE	1	1	1	1		
9	E22 Y86 293	SEPARATOR	1	1	1	1		
10	E22 C34 506	COMPRESSOR RUBBER SET	3	3	3	3		3 RUBBERS/SET
11	E22 R83 900	COMPRESSOR	1	1	1	1	MC	SVB130FBBMT
12	E22 Y86 661	STOP VALVE (GAS)	1	1	1	1		ø9.52
13	E22 838 704	DRAIN SOCKET	1	1	1	1		
14	E22 Y86 662	STOP VALVE (LIQUID)	1	1	1	1		ø6.35
15	E22 Y84 640	EXPANSION VALVE	1	1	1	1		
16	E22 41G 645	EXPANSION VALVE ASSEMBLY	1	1	1	1		Includes LEV body and capillary tube
17	E22 Y84 493	EXPANSION VALVE COIL	1	1	1	1	LEV	
18	E22 Y86 490	R.V. COIL	1	1	1	1	21S4	
19	E22 J44 961	4-WAY VALVE	1	1	1	1		
20	E22 Y86 650	VALVE COVER	1	1	1	1		
21	E22 Y86 245	SERVICE PANEL	1	1	1	1		
22	E22 Y86 233	BACK PANEL	1	1	1	1		
23	E22 Y86 309	AMBIENT TEMPERATURE THERMISTOR	1	1	1	1	RT65	
24	E22 C34 307	OUTDOOR HEAT EXCHANGER TEMPERATURE THERMISTOR	1	1	1	1	RT68	
25	E22 Y86 306	THERMISTOR SET	1	1	1	1	RT61, RT62	DEFROST, DISCHARGE
26	E22 N94 337	REACTOR	1	1	1	1	L61	
27	E22 T95 374	TERMINAL BLOCK	1	1	1	1	TB1	5 P
28	E22 61E 451	INVERTER P.C. BOARD	1	1	1	1		Includes heat sink and RT64
29	E22 Y86 525	CONDENSER WIRE NET	1	1	1	1		
30	E22 Y86 515	MOTOR SUPPORT	1	1	1	1		
①	E22 J47 936	CAPILLARY TUBE	1	1	1	1		ø4.0 x ø2.4 x 240
②	E22 F35 936	CAPILLARY TUBE	1	1	1	1		ø3.0 x ø2.0 x 210

MUZ-LN50VG2- ER2, ET2, E3

1-15. OUTDOOR UNIT STRUCTURAL PARTS, ELECTRICAL PARTS AND FUNCTIONAL PARTS



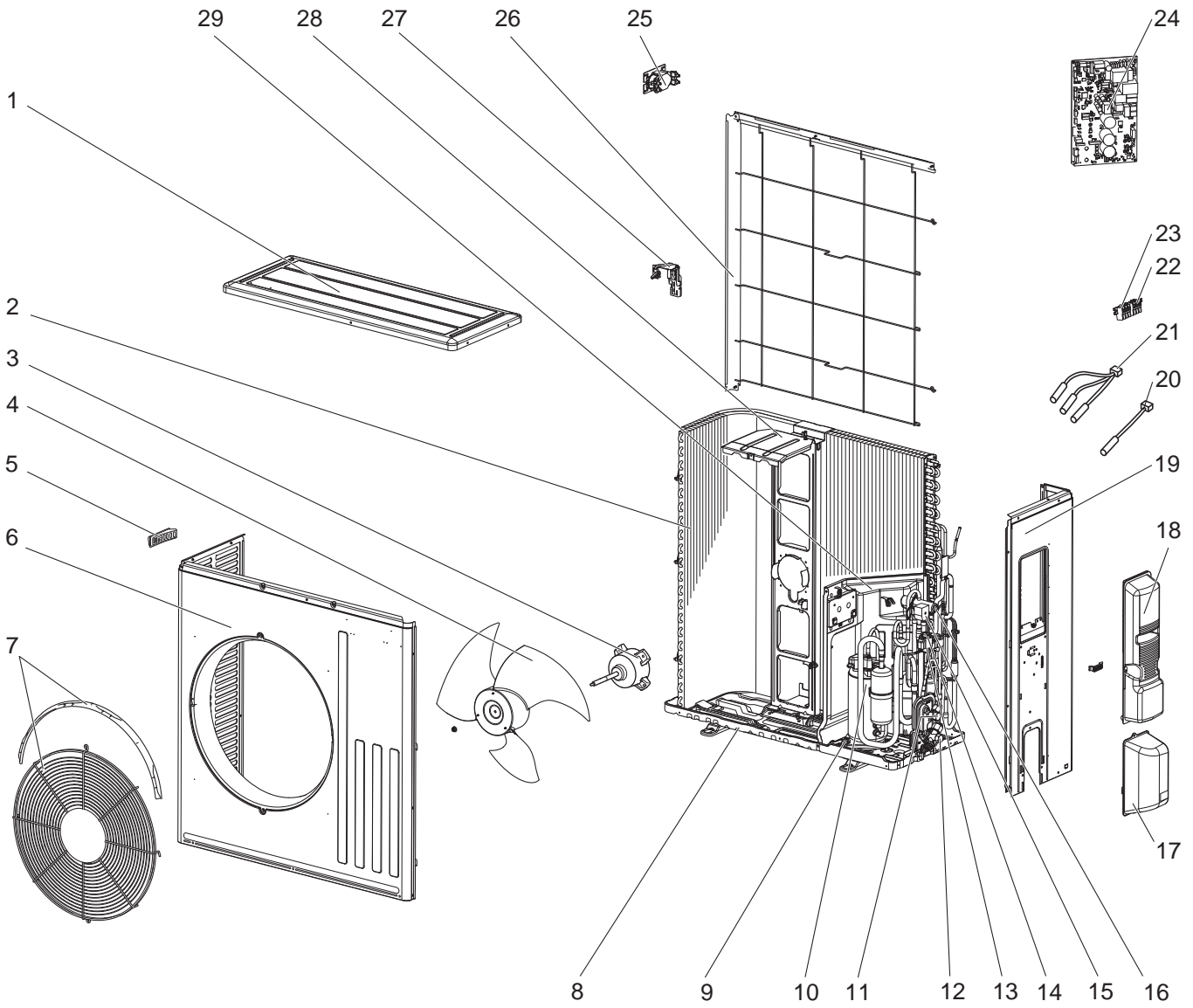
## 1-15. OUTDOOR UNIT STRUCTURAL PARTS, ELECTRICAL PARTS AND FUNCTIONAL PARTS

1. The part quantity below indicates the required number of pieces per unit.  
2. The circled No. indicates that the part is not shown in the figure.

No.	Part No.	Part Name	MUZ-LN50VG2- <sup>ER2</sup>	MUZ-LN50VG2- <sup>ET2</sup>	MUZ-LN50VG2- <sup>EB</sup>	Symbol in Wiring Diagram	Remarks
1	E22 Y86 297	TOP PANEL	1	1	1		
2	E22 Y86 630	OUTDOOR HEAT EXCHANGER	1	1	1		
3	E22 Y86 301	OUTDOOR FAN MOTOR	1	1	1	MF	RC0J50-□□
4	E22 Y86 501	PROPELLER FAN	1	1	1		
5	E22 41G 232	CABINET	1	1	1		
6	E22 Y86 531	ICE GUARD	1	1	1		
7	E22 Y86 521	GRILLE	1	1	1		
8	E22 44P 290	BASE	1	1	1		
9	E22 23A 293	SEPARATOR			1		
9	E22 3A2 293	SEPARATOR	1	1			
10	E22 C34 506	COMPRESSOR RUBBER SET	3	3	3		3 RUBBERS/SET
11	E22 46W 900	COMPRESSOR	1	1	1	MC	SVB130FBBMT
12	E22 Y86 661	STOP VALVE (GAS)	1	1	1		ø9.52
13	E22 838 704	DRAIN SOCKET	1	1	1		
14	E22 75R 662	STOP VALVE (LIQUID)	1	1	1		ø6.35
15	E22 Y84 640	EXPANSION VALVE	1	1	1		
16	E22 03W 645	EXPANSION VALVE ASSEMBLY	1	1	1		Includes LEV body and capillary tube
17	E22 Y84 493	EXPANSION VALVE COIL	1	1	1	LEV	
18	E22 Y86 490	R.V. COIL	1	1	1	21S4	
19	E22 J44 961	4-WAY VALVE	1	1	1		
20	E22 Y86 650	VALVE COVER	1	1	1		
21	E22 Y86 245	SERVICE PANEL	1	1	1		
22	E22 Y86 233	BACK PANEL	1	1	1		
23	E22 41X 381	COMPRESSOR PROTECTOR	1	1	1	26C	
24	E22 Y86 309	AMBIENT TEMPERATURE THERMISTOR	1	1	1	RT65	
25	E22 C34 307	OUTDOOR HEAT EXCHANGER TEMPERATURE THERMISTOR	1	1	1	RT68	
26	E22 Y86 306	THERMISTOR SET	1	1	1	RT61, RT62	DEFROST, DISCHARGE
27	E22 N94 337	REACTOR	1	1	1	L61	
28	E22 13L 374	TERMINAL BLOCK	1	1	1	TB1	5 P
29	E22 59Y 451	INVERTER P.C. BOARD	1	1	1		Includes heat sink and RT64
30	E22 Y86 525	CONDENSER WIRE NET	1	1	1		
31	E22 Y86 515	MOTOR SUPPORT	1	1	1		
③②	E22 P72 936	CAPILLARY TUBE	1	1	1		ø4.0 × ø2.4 × 240
③③	E22 L05 508	PROPELLER FAN NUT	1	1	1		

MUZ-LN60VG - [E1], [ER1], [ET1]

1-16. OUTDOOR UNIT STRUCTURAL PARTS, ELECTRICAL PARTS AND FUNCTIONAL PARTS





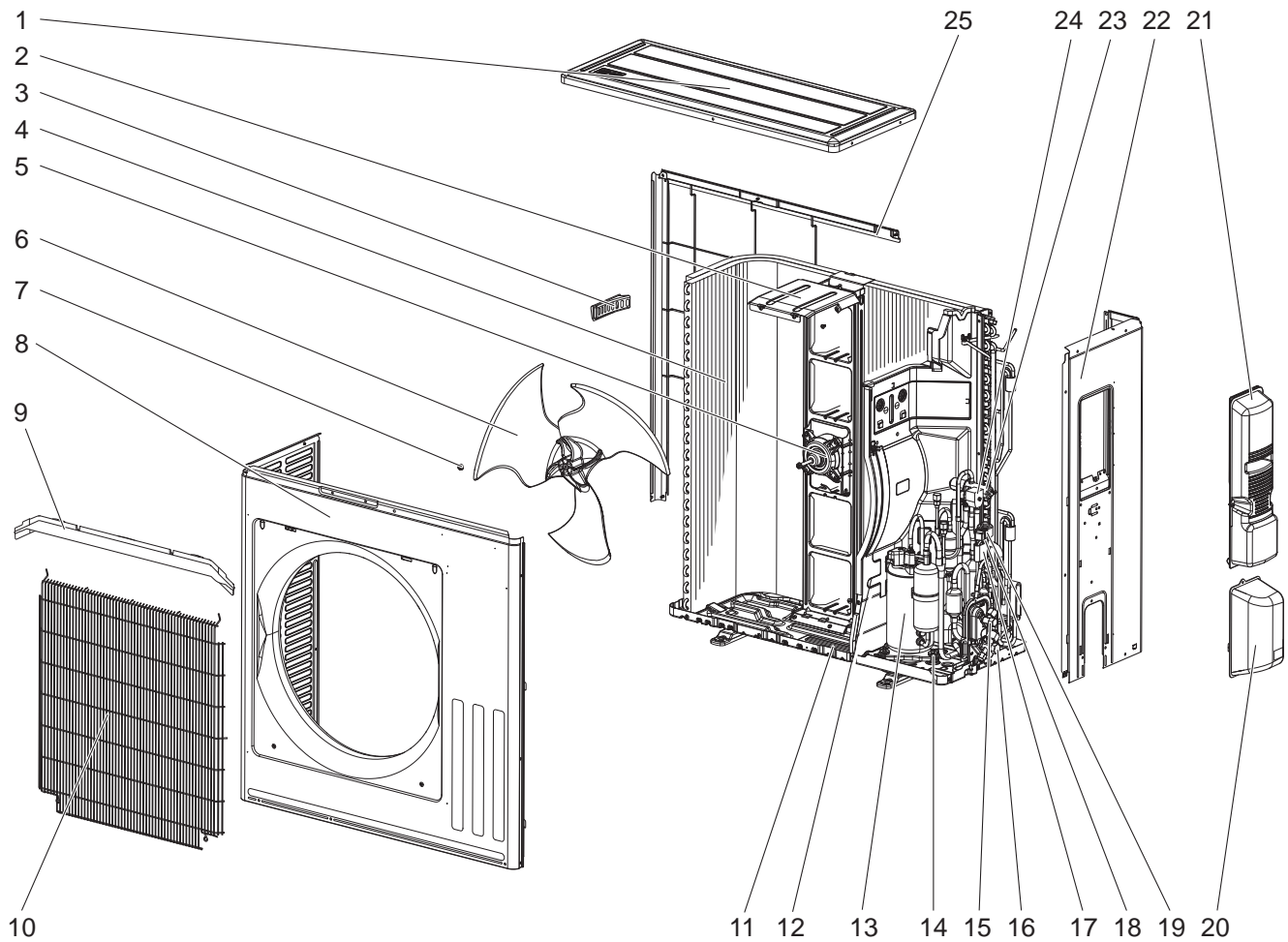
## 1-16. OUTDOOR UNIT STRUCTURAL PARTS, ELECTRICAL PARTS AND FUNCTIONAL PARTS

1. The part quantity below indicates the required number of pieces per unit.  
2. The circled No. indicates that the part is not shown in the figure.

No.	Part No.	Part Name	MUZ-LN60VG- <sup>[E1]</sup>	MUZ-LN60VG- <sup>[ER1]</sup>	MUZ-LN60VG- <sup>[ET1]</sup>	Symbol in Wiring Diagram	Remarks
1	E22 L87 297	TOP PANEL	1	1	1		
2	E22 Y87 630	OUTDOOR HEAT EXCHANGER	1	1	1		
3	E22 F28 301	OUTDOOR FAN MOTOR	1	1	1	MF	RC0J60-□□
4	E22 F28 501	PROPELLER FAN	1	1	1		
5	E22 817 009	HANDLE	1	1	1		
6	E22 R13 232	CABINET	1	1	1		
7	E22 Y87 521	FAN GUARD	1	1	1		Includes ice guard
8	E22 F28 290	BASE	1	1	1		
9	E22 C34 506	COMPRESSOR RUBBER SET	3	3	3		3 RUBBERS/SET
10	E22 R86 900	COMPRESSOR	1	1	1	MC	SVB172FCKMT
11	E22 G16 662	STOP VALVE (LIQUID)	1	1	1		ø6.35
12	E22 G16 661	STOP VALVE (GAS)	1	1	1		ø12.7
13	E22 Y84 640	EXPANSION VALVE	1	1	1		
14	E22 Y87 493	EXPANSION VALVE COIL	1	1	1	LEV	
15	E22 R84 490	R.V. COIL	1	1	1	21S4	
16	E22 J44 961	4-WAY VALVE	1	1	1		
17	E22 F28 650	VALVE COVER	1	1	1		
18	E22 Y87 245	SERVICE PANEL	1	1	1		
19	E22 J52 233	BACK PANEL	1	1	1		
20	E22 G16 309	AMBIENT TEMPERATURE THERMISTOR	1	1	1	RT65	
21	E22 R84 308	THERMISTOR SET	1	1	1	RT61, RT62, RT68	DEFROST, DISCHARGE, OUTDOOR HEAT EXCHANGER TEMPERATURE
22	E22 F29 374	TERMINAL BLOCK	1	1	1	TB1	3 P
23	E22 T16 374	TERMINAL BLOCK	1	1	1	TB2	3 P
24	E22 Y87 451	INVERTER P.C. BOARD	1	1	1		Includes heat sink and RT64
25	E22 R84 337	REACTOR	1	1	1	L	
26	E22 L87 523	CONDENSER NET	1	1	1		
27	E22 F28 079	THERMO HOLDER	1	1	1		
28	E22 F28 515	MOTOR SUPPORT	1	1	1		
29	E22 R86 293	SEPARATOR	1	1	1		
③⑩	E22 527 936	CAPILLARY TUBE	1	1	1		ø4.0 x ø2.4 x 100
③⑪	E22 F28 704	DRAIN SOCKET	1	1	1		

MUZ-LN60VG2 - E1, ER1, ET1

### 1-17. OUTDOOR UNIT STRUCTURAL PARTS PARTS AND FUNCTIONAL PARTS



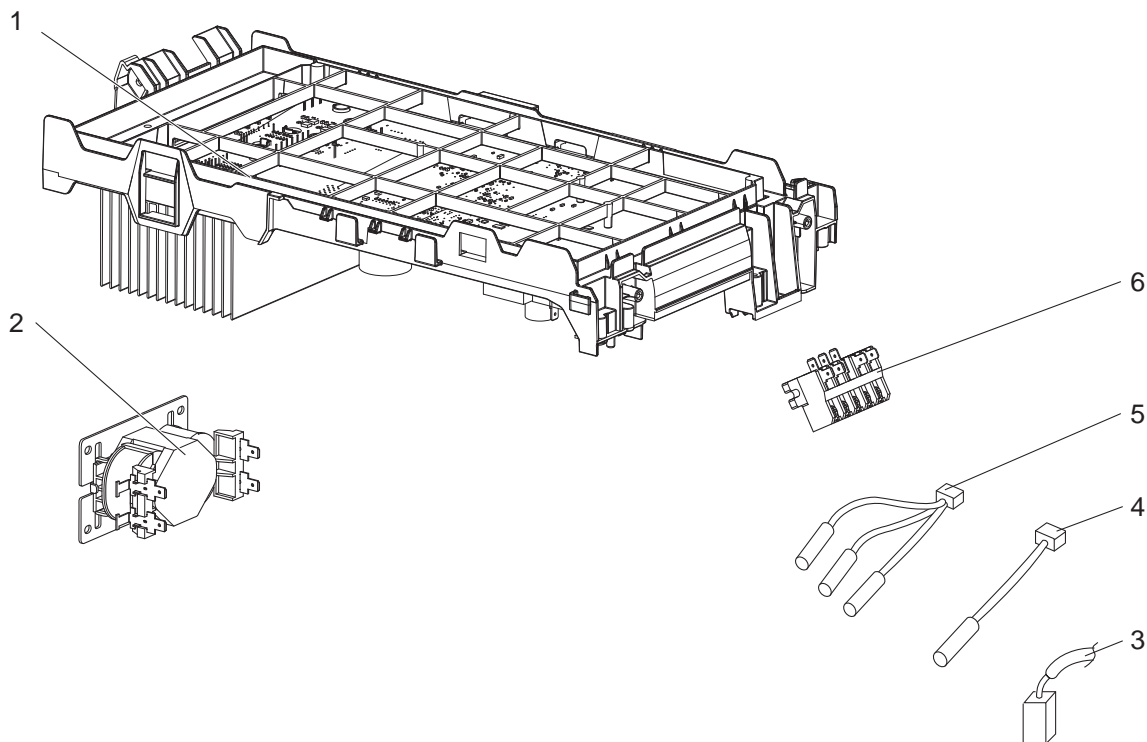
## 1-17. OUTDOOR UNIT STRUCTURAL PARTS AND FUNCTIONAL PARTS

1. The part quantity below indicates the required number of pieces per unit.
2. The circled No. indicates that the part is not shown in the figure.

No.	Part No.	Part Name	MUZ-LN60VG2- <sup>[E1]</sup>	MUZ-LN60VG2- <sup>[ER1]</sup>	MUZ-LN60VG2- <sup>[ET1]</sup>	Symbol in Wiring Diagram	Remarks
1	E22 L87 297	TOP PANEL	1	1	1		
2	E22 59N 515	MOTOR SUPPORT	1	1	1		
3	E22 817 009	HANDLE	1	1	1		
4	E22 77R 630	OUTDOOR HEAT EXCHANGER	1	1	1		
5	E22 91F 301	OUTDOOR FAN MOTOR	1	1	1	MF	RC0J50-□□
6	E22 91F 501	PROPELLER FAN	1	1	1		
7	E27 L05 508	PROPELLER FAN NUT	1	1	1		
8	E22 91F 232	CABINET	1	1	1		
9	E22 33N 531	ICE GUARD	1	1	1		
10	E22 91F 521	GRILLE (OUT)	1	1	1		
11	E22 52V 290	BASE	1	1	1		
12	E22 91F 293	SEPARATOR	1	1	1		
13	E22 56W 900	COMPRESSOR	1	1	1	MC	SVB172FCKMT
14	E22 C34 506	COMPRESSOR RUBBER SET	3	3	3		3 RUBBERS/SET
15	E22 77R 662	STOP VALVE (LIQ)	1	1	1		ø6.35
16	E22 G16 661	STOP VALVE (GAS)	1	1	1		ø12.7
17	E22 75Y 645	EXPANSION VALVE ASSEMBLY	1	1	1		Includes LEV body, capillary tube, muffler
18	E22 77R 640	EXPANSION VALVE	1	1	1		LEV body
19	E22 77R 493	EXPANSION VALVE COIL	1	1	1	LEV	
20	E22 F28 650	VALVE COVER	1	1	1		
21	E22 91F 245	SERVICE PANEL	1	1	1		
22	E22 77R 233	BACK PANEL (OUT)	1	1	1		
23	E22 75R 961	4-WAY VALVE	1	1	1		
24	E22 33N 490	R.V. COIL	1	1	1	21S4	
25	E22 L87 523	CONDENSER NET	1	1	1		
②6	E27 Y91 936	CAPILLARY TUBE	1	1	1		ø4.0 × ø2.4 × 100
②7	E22 F28 704	DRAIN SOCKET	1	1	1		

# MUZ-LN60VG2 - [E1], [ER1], [ET1]

## 1-18. OUTDOOR UNIT ELECTRICAL PARTS



1. The part quantity below indicates the required number of pieces per unit.

No.	Part No.	Part Name	[E1]	[ER1]	[ET1]	Symbol in Wiring Diagram	Remarks
			MUZ-LN60VG2-	MUZ-LN60VG2-	MUZ-LN60VG2-		
1	E22 79Y 451	INVERTER P.C. BOARD	1	1	1		Includes PB Support,heat sink and RT64
2	E22 R84 337	REACTOR	1	1	1	L	
3	E22 42X 381	COMPRESSOR PROTECTOR	1	1	1	26C	
4	E22 49P 309	AMBIENT TEMPERATURE THERMISTOR	1	1	1	RT65	
5	E22 F28 308	THERMISTOR SET	1	1	1	RT61, RT62, RT68	DEFROST THERMISTOR (RT61) DISCHARGE TEMPERATURE (RT62) OUTDOOR HEAT EXCHANGER TEMPERATURE (RT68) combined type
6	E22 T95 374	TERMINAL BLOCK	1	1	1	TB1	5 P

# MITSUBISHI ELECTRIC CORPORATION

HEAD OFFICE: TOKYO BUILDING, 2-7-3, MARUNOUCHI, CHIYODA-KU, TOKYO 100-8310, JAPAN

© Copyright 2016 MITSUBISHI ELECTRIC CORPORATION

Issued: Dec. 2022. No. OBB767 REVISED EDITION-E

Issued: Feb. 2021. No. OBB767 REVISED EDITION-D

Issued: Dec. 2020. No. OBB767 REVISED EDITION-C

Issued: Dec. 2019. No. OBB767 REVISED EDITION-B

Issued: Jun. 2018. No. OBB767 REVISED EDITION-A

Published: Dec. 2016. No. OBB767

Made in Japan

Specifications are subject to change without notice.