

INDOOR UNIT

No. OBB937

PARTS CATALOG

Models

MSZ-AY15VG - **ET1**

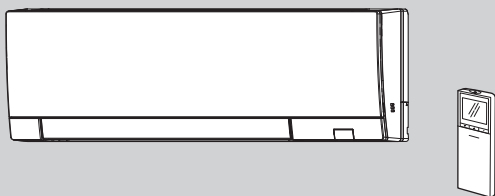
MSZ-AY20VG - **ET1**

MSZ-AY15VGK - **E1**, **ET1**

MSZ-AY20VGK - **E1**, **ET1**

MSZ-AY15VGKP - **E1**, **ET1**

MSZ-AY20VGKP - **E1**, **ET1**



CONTENTS

- 1. SERVICE PARTS LIST 2
- 2. OPTIONAL PARTS 14

SERVICE MANUAL (OBH937)

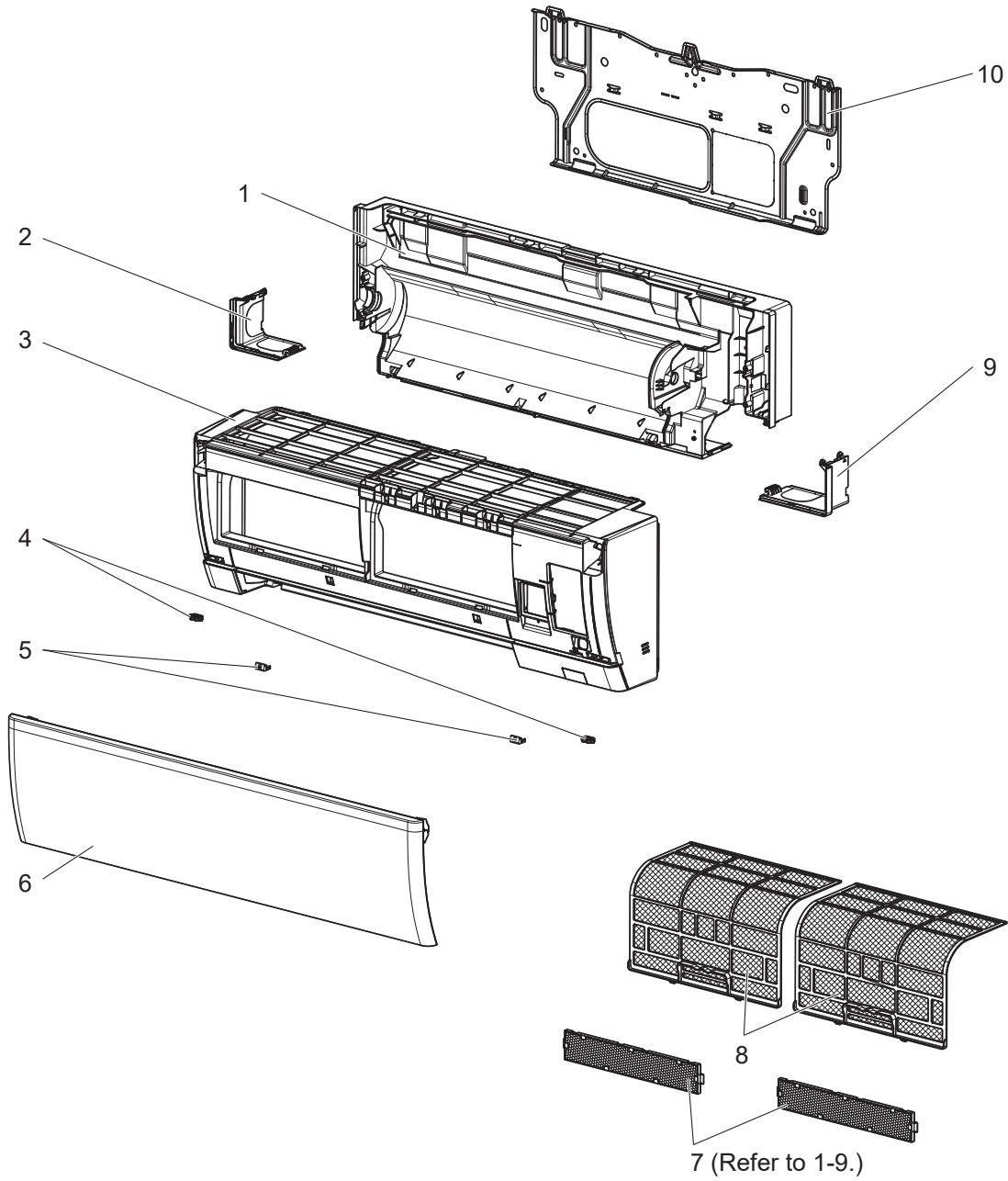
1

SERVICE PARTS LIST

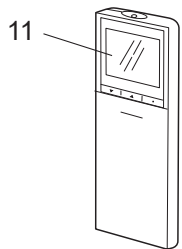
MSZ-AY15VG

MSZ-AY20VG

1-1. INDOOR UNIT STRUCTURAL PARTS



1-2. ACCESSORY AND REMOTE CONTROLLER



1-1. INDOOR UNIT STRUCTURAL PARTS

1. The part quantity below indicates the required number of pieces per unit.

No.	Part No.	Part name	MSZ-AY15VG - [ET1]	MSZ-AY20VG - [ET1]	Symbol in Wiring Diagram	Remarks
1	E22 9E7 234	BOX ASSEMBLY	1	1		
2	E22 31D 976	CORNER BOX (LEFT)	1	1		
3	E22 0F1 000	PANEL ASSEMBLY	1	1		Includes No. 4, 5 and 6
4	E22 K90 142	CATCH	2	2		2 PCS/SET
5	E22 31D 067	SCREW CAP	2	2		2 PCS/SET
6	E22 9E7 010	FRONT PANEL ASSEMBLY	1	1		
7	—	AIR CLEANING FILTER (V BLOCKING FILTER)	2	2		2PCS/SET MAC-2470FT-E
8	E22 9E7 100	AIR FILTER	2	2		1 PC/SET
9	E22 31D 975	CORNER BOX (RIGHT)	1	1		
10	E22 9E7 970	INSTALLATION PLATE	1	1		

1-2. ACCESSORY AND REMOTE CONTROLLER

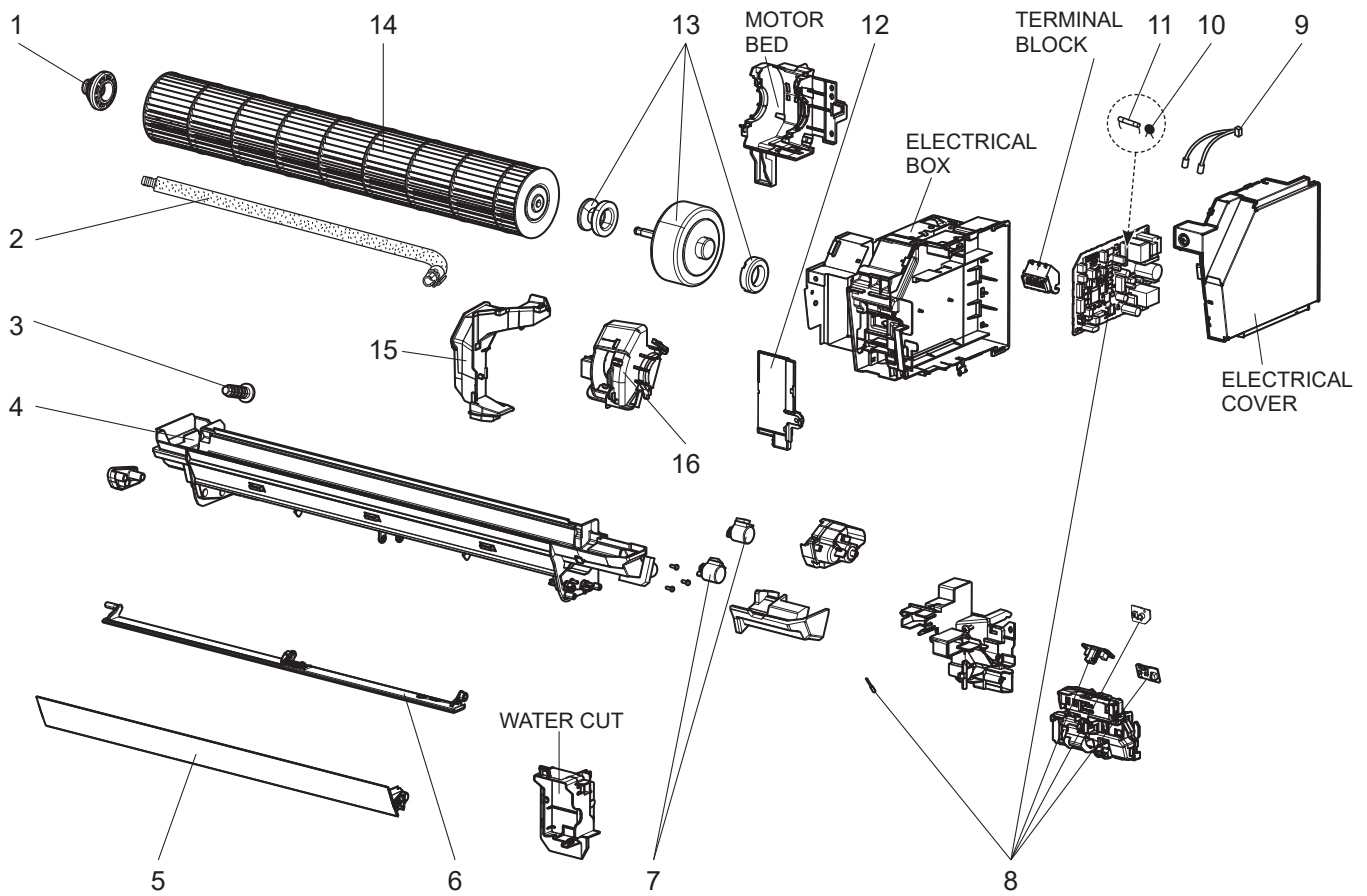
1. The part quantity below indicates the required number of pieces per unit.

No.	Part No.	Part name	MSZ-AY15VG - [ET1]	MSZ-AY20VG - [ET1]	Symbol in Wiring Diagram	Remarks
11	E22 9E7 426	REMOTE CONTROLLER	1	1		SH23E

MSZ-AY15VG

MSZ-AY20VG

1-3. INDOOR UNIT ELECTRICAL PARTS AND FUNCTIONAL PARTS

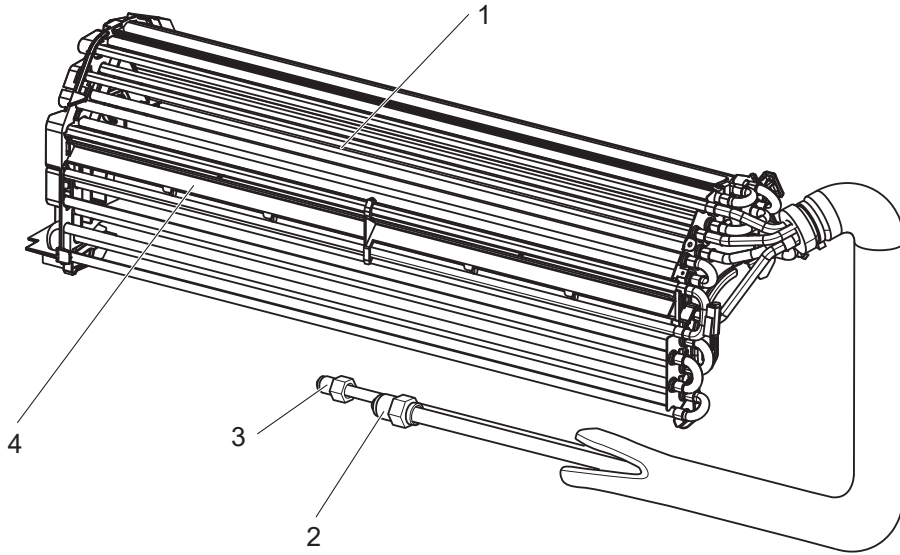


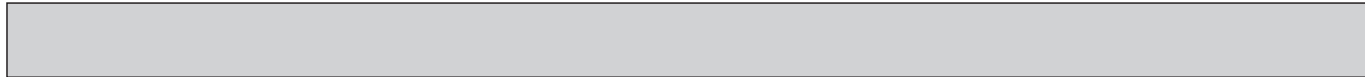
1-3. INDOOR UNIT ELECTRICAL PARTS AND FUNCTIONAL PARTS

1. The part quantity below indicates the required number of pieces per unit.

No.	Part No.	Part name	MSZ-AY15VG - [ET1]	MSZ-AY20VG - [ET1]	Symbol in Wiring Diagram	Remarks
1	E22 A89 509	BEARING MOUNT ASSEMBLY	1	1		Includes sleeve bearing
2	E22 P72 702	DRAIN HOSE	1	1		
3	E27 42R 705	DRAIN CAP	1	1		
4	E22 9E7 235	NOZZLE ASSEMBLY	1	1		Full assembly except DRAIN HOSE
5	E22 9E7 040	VANE UPPER	1	1		
6	E22 9E7 041	VANE LOWER	1	1		
7	E22 A89 303	VANE MOTOR	2	2	MV1, MV2	UP & DOWN
8	E22 0F5 452	ELECTRONIC CONTROL P.C. BOARD	1			Includes DISPLAY, RECEIVER, SWITCH/BUZZER P.C. BOARD and RT11
8	E22 0F6 452	ELECTRONIC CONTROL P.C. BOARD		1		Includes DISPLAY, RECEIVER, SWITCH/BUZZER P.C. BOARD and RT11
9	E22 9E7 307	INDOOR COIL THERMISTOR	1	1	RT12, RT13	Combined type
10	E22 K90 385	VARISTOR	1	1	NR11	
11	E22 42J 382	FUSE	1	1	F11	T3.15AL250V
12	E22 9E7 784	V.A. CLAMP	1	1		
13	E22 9E7 300	INDOOR FAN MOTOR	1	1	MF	RC0J25-□□ Includes FAN MOTOR RUBBER MOUNT (2 PC/SET)
14	E22 95M 302	LINE FLOW FAN	1	1		
15	E22 18P 541	WATER COVER	1	1		
16	E22 K90 333	MOTOR BAND	1	1		Includes rubber mounts

MSZ-AY15VG MSZ-AY20VG
1-4. INDOOR UNIT HEAT EXCHANGER



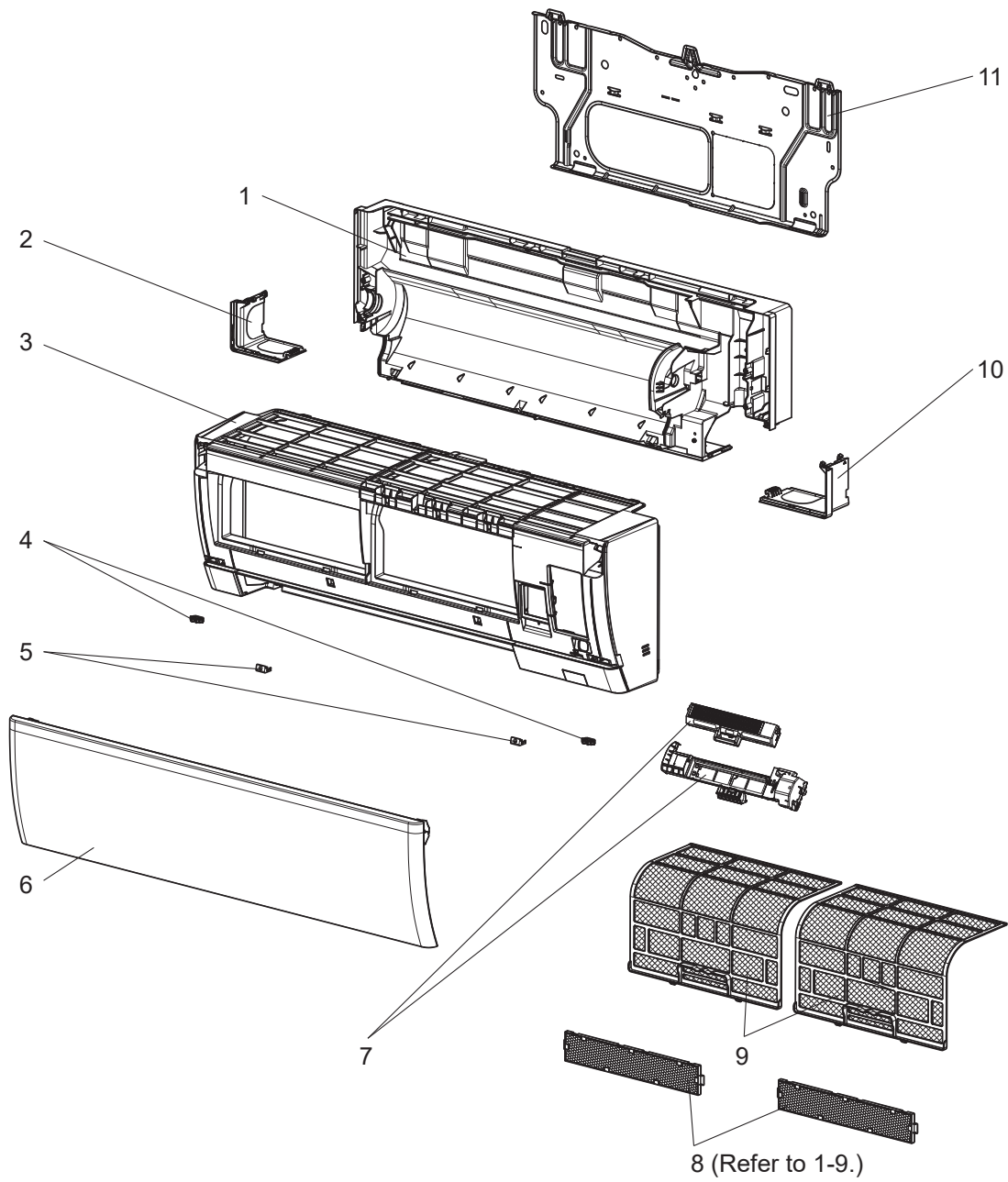


1-4. INDOOR UNIT HEAT EXCHANGER

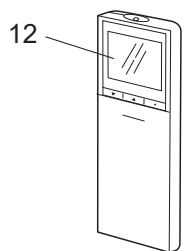
1. The part quantity below indicates the required number of pieces per unit.

No.	Part No.	Part name	MSZ-AY15VG - [ET1]	MSZ-AY20VG - [ET1]	Symbol in Wiring Diagram	Remarks
1	E22 9E7 620	INDOOR HEAT EXCHANGER	1	1		Not including PANEL ASSEMBLY
2	E22 151 666	UNION (GAS) 3/8"	1	1		ø9.52
3	E22 151 667	UNION (LIQUID) 1/4"	1	1		ø6.35
4	E22 K90 707	DRAIN PLATE ASSEMBLY	1	1		

MSZ-AY15VGK MSZ-AY15VGKP
MSZ-AY20VGK MSZ-AY20VGKP
1-5. INDOOR UNIT STRUCTURAL PARTS



1-6. ACCESSORY AND REMOTE CONTROLLER



1-5. INDOOR UNIT STRUCTURAL PARTS

1. The part quantity below indicates the required number of pieces per unit.

No.	Part No.	Part name	MSZ-AY15VGK - [E1]	MSZ-AY15VGK - [ET1]	MSZ-AY15VGKP - [E1]	MSZ-AY15VGKP - [ET1]	MSZ-AY20VGK - [E1]	MSZ-AY20VGK - [ET1]	MSZ-AY20VGKP - [E1]	MSZ-AY20VGKP - [ET1]	Symbol in Wiring Diagram	Remarks
1	E22 9E7 234	BOX ASSEMBLY	1	1	1	1	1	1	1	1		
2	E22 31D 976	CORNER BOX (LEFT)	1	1	1	1	1	1	1	1		
3	E22 9E7 000	PANEL ASSEMBLY	1				1					Includes No. 4, 5 and 6
3	E22 0F1 000	PANEL ASSEMBLY		1				1				Includes No. 4, 5 and 6
3	E22 9E9 000	PANEL ASSEMBLY			1				1			Includes No. 4, 5 and 6
3	E22 0F3 000	PANEL ASSEMBLY				1				1		Includes No. 4, 5 and 6
4	E22 K90 142	CATCH	2	2	2	2	2	2	2	2		2 PCS/SET
5	E22 31D 067	SCREW CAP	2	2	2	2	2	2	2	2		2 PCS/SET
6	E22 9E7 010	FRONT PANEL ASSEMBLY	1	1	1	1	1	1	1	1		
7	E22 9E9 775	AIR PURIFYING ASSEMBLY			1	1			1	1		
8	—	AIR CLEANING FILTER (V BLOCKING FILTER)	2	2			2	2				2PCS/SET MAC-2470FT-E
9	E22 9E7 100	AIR FILTER	2	2	2	2	2	2	2	2		1 PC/SET
10	E22 31D 975	CORNER BOX (RIGHT)	1	1	1	1	1	1	1	1		
11	E22 9E7 970	INSTALLATION PLATE	1	1	1	1	1	1	1	1		

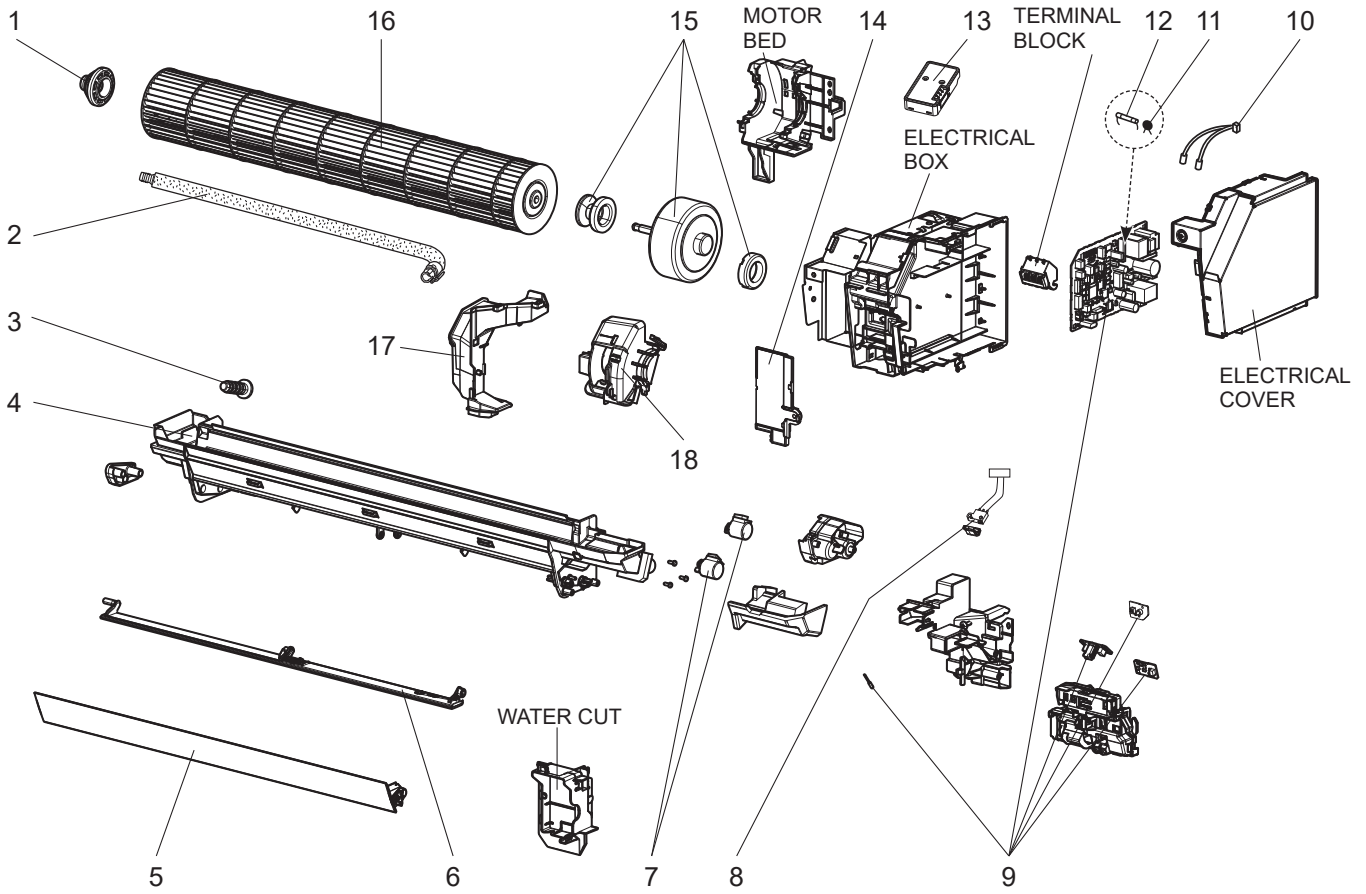
1-6. ACCESSORY AND REMOTE CONTROLLER

1. The part quantity below indicates the required number of pieces per unit.

No.	Part No.	Part name	MSZ-AY15VGK - [E1]	MSZ-AY15VGK - [ET1]	MSZ-AY15VGKP - [E1]	MSZ-AY15VGKP - [ET1]	MSZ-AY20VGK - [E1]	MSZ-AY20VGK - [ET1]	MSZ-AY20VGKP - [E1]	MSZ-AY20VGKP - [ET1]	Symbol in Wiring Diagram	Remarks
12	E22 9E7 426	REMOTE CONTROLLER	1	1	1	1	1	1	1	1		SH23E

MSZ-AY15VGK MSZ-AY15VGKP
MSZ-AY20VGK MSZ-AY20VGKP

1-7. INDOOR UNIT ELECTRICAL PARTS AND FUNCTIONAL PARTS

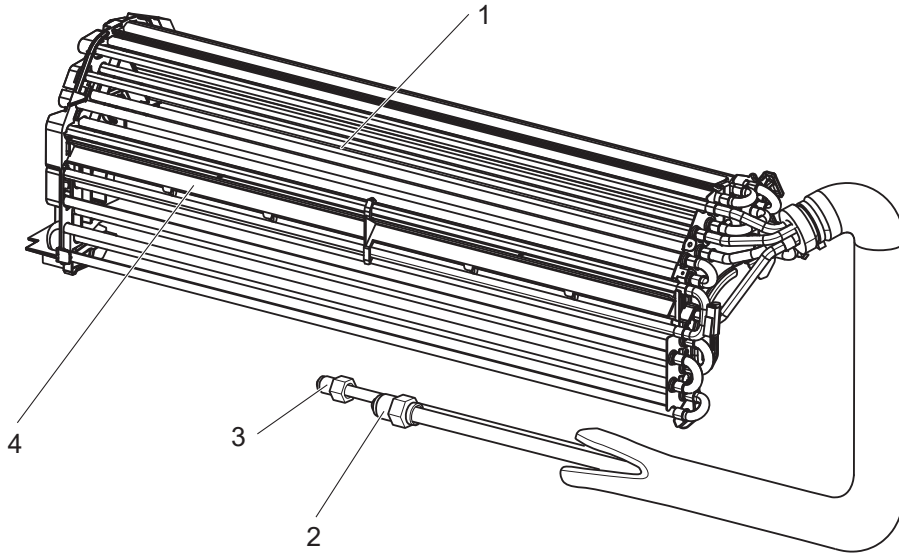


1-7. INDOOR UNIT ELECTRICAL PARTS AND FUNCTIONAL PARTS

1. The part quantity below indicates the required number of pieces per unit.

No.	Part No.	Part name	MSZ-AY15VGK - [E1]	MSZ-AY15VGK - [ET1]	MSZ-AY15VGKP - [E1]	MSZ-AY15VGKP - [ET1]	MSZ-AY20VGK - [E1]	MSZ-AY20VGK - [ET1]	MSZ-AY20VGKP - [E1]	MSZ-AY20VGKP - [ET1]	Symbol in Wiring Diagram	Remarks
1	E22 A89 509	BEARING MOUNT ASSEMBLY	1	1	1	1	1	1	1	1		Includes sleeve bearing
2	E22 P72 702	DRAIN HOSE	1	1	1	1	1	1	1	1		
3	E27 42R 705	DRAIN CAP	1	1	1	1	1	1	1	1		
4	E22 9E7 235	NOZZLE ASSEMBLY	1	1	1	1	1	1	1	1		Full assembly except DRAIN HOSE
5	E22 9E7 040	VANE UPPER	1	1	1	1	1	1	1	1		
6	E22 9E7 041	VANE LOWER	1	1	1	1	1	1	1	1		
7	E22 A89 303	VANE MOTOR	2	2	2	2	2	2	2	2	MV1, MV2	UP & DOWN
8	E22 897 316	INTERLOCK SWITCH			1	1			1	1		
9	E22 9E7 452	ELECTRONIC CONTROL P.C. BOARD	1	1								Includes DISPLAY, RECEIVER, SWITCH/BUZZER P.C. BOARD and RT11
9	E22 9E9 452	ELECTRONIC CONTROL P.C. BOARD			1	1						Includes DISPLAY, RECEIVER, SWITCH/BUZZER P.C. BOARD and RT11
9	E22 9E8 452	ELECTRONIC CONTROL P.C. BOARD					1	1				Includes DISPLAY, RECEIVER, SWITCH/BUZZER P.C. BOARD and RT11
9	E22 0F0 452	ELECTRONIC CONTROL P.C. BOARD							1	1		Includes DISPLAY, RECEIVER, SWITCH/BUZZER P.C. BOARD and RT11
10	E22 9E7 307	INDOOR COIL THERMISTOR	1	1	1	1	1	1	1	1	RT12, RT13	Combined type
11	E22 K90 385	VARISTOR	1	1	1	1	1	1	1	1	NR11	
12	E22 42J 382	FUSE	1	1	1	1	1	1	1	1	F11	T3.15AL250V
13	E22 9E7 457	WI-FI INTERFACE MAC-577IF2-E	1	1	1	1	1	1	1	1		MAC-577IF2-E
14	E22 9E7 784	V.A. CLAMP	1	1	1	1	1	1	1	1		
15	E22 9E7 300	INDOOR FAN MOTOR	1	1	1	1	1	1	1	1	MF	RC0J25-□□ Includes FAN MOTOR RUBBER MOUNT (2 PC/SET)
16	E22 95M 302	LINE FLOW FAN	1	1	1	1	1	1	1	1		
17	E22 11P 541	WATER COVER	1	1	1	1	1	1	1	1		
18	E22 K90 333	MOTOR BAND	1	1	1	1	1	1	1	1		

MSZ-AY15VGK MSZ-AY15VGKP
MSZ-AY20VGK MSZ-AY20VGKP
1-8. INDOOR UNIT HEAT EXCHANGER



1. The part quantity below indicates the required number of pieces per unit.

No.	Part No.	Part name									Symbol in Wiring Diagram	Remarks
			MSZ-AY15VGK - [E1]	MSZ-AY15VGK - [ET1]	MSZ-AY15VGKP - [E1]	MSZ-AY15VGKP - [ET1]	MSZ-AY20VGK - [E1]	MSZ-AY20VGK - [ET1]	MSZ-AY20VGKP - [E1]	MSZ-AY20VGKP - [ET1]		
1	E22 9E7 620	INDOOR HEAT EXCHANGER	1	1	1	1	1	1	1	1		Not including PANEL ASSEMBLY
2	E22 151 666	UNION (GAS) 3/8"	1	1	1	1	1	1	1	1		ø9.52
3	E22 151 667	UNION (LIQUID) 1/4"	1	1	1	1	1	1	1	1		ø6.35
4	E22 K90 707	DRAIN PLATE ASSEMBLY	1	1	1	1	1	1	1	1		

1-9. AIR CLEANING FILTER [V Blocking Filter]

Every 3 months:

- Remove dirt by a vacuum cleaner.

When dirt cannot be removed by vacuum cleaning:

- Soak the filter and its frame in lukewarm water before rinsing it.
- After washing, dry it well in shade. Install all tabs of the air filter.

Every year:

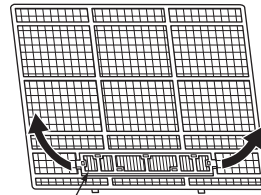
- Replace it with a new air cleaning filter for best performance.

NOTE 1: Clean the filters regularly for best performance and to reduce power consumption.

NOTE 2: Dirty filters cause condensation in the air conditioner which will contribute to the growth of fungi such as mold. It is therefore recommended to clean air filters every 2 weeks.

Model	Part No.
MSZ-AY15VG MSZ-AY20VG MSZ-AY15VGK MSZ-AY20VGK	MAC-2470FT-E

Pull to remove from the air filter



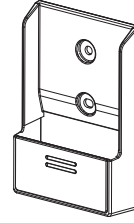
Air cleaning filter

2

OPTIONAL PARTS LIST

2-1. REMOTE CONTROLLER HOLDER

Model	Part No.
MSZ-AY15VG MSZ-AY20VG MSZ-AY15VGK MSZ-AY20VGK MSZ-AY15VGKP MSZ-AY20VGKP	MAC-1300RC-E



2-2. AIR CLEANING FILTER [V Blocking Filter]

Every 3 months:

- Remove dirt by a vacuum cleaner.

When dirt cannot be removed by vacuum cleaning:

- Soak the filter and its frame in lukewarm water before rinsing it.
- After washing, dry it well in shade. Install all tabs of the air filter.

Every year:

- Replace it with a new air cleaning filter for best performance.

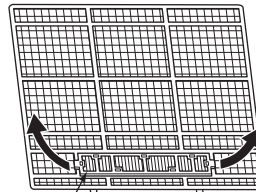
NOTE 1: Clean the filters regularly for best performance and to reduce power consumption.

NOTE 2: Dirty filters cause condensation in the air conditioner which will contribute to the growth of fungi such as mold.

It is therefore recommended to clean air filters every 2 weeks.

Model	Part No.
MSZ-AY15VGKP MSZ-AY20VGKP	MAC-2470FT-E

Pull to remove from the air filter



Air cleaning filter

2-3. AIR PURIFYING DEVICE (VGKP TYPE ONLY)

Every 3 months:

- Remove dirt by a vacuum cleaner.

When dirt cannot be removed by vacuum cleaning:

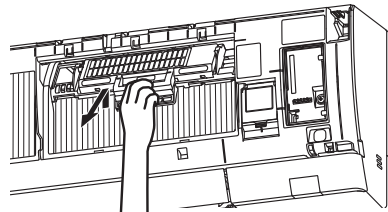
- Soak the filter and its frame in lukewarm water before rinsing it.
- After washing, dry it well in shade.

NOTE 1: Clean the filters regularly for best performance and to reduce power consumption.

NOTE 2: Dirty filters cause condensation in the air conditioner which will contribute to the growth of fungi such as mold.

It is therefore recommended to clean air filters every 2 weeks.

Model
MSZ-AY15VGKP MSZ-AY20VGKP



MITSUBISHI ELECTRIC CORPORATION

HEAD OFFICE: TOKYO BUILDING., 2-7-3, MARUNOUCHI, CHIYODA-KU, TOKYO 100-8310, JAPAN