

**Revision G:**

• MSZ-AP60/71VG - **E4**, **ET4** and  
MSZ-AP60/71VGK - **E4**, **ET4** have been  
added.

OBB788 REVISED EDITION-F is void.

# INDOOR UNIT PARTS CATALOG

**No. OBB788  
REVISED EDITION-G**

## Models

**MSZ-AP25VG** - **E1**, **EN1**, **ET1**, **ER1**, **E2**, **EN2**, **ET2**, **E3**, **ET3**

**MSZ-AP35VG** - **E1**, **EN1**, **ET1**, **ER1**, **E2**, **EN2**, **ET2**, **E3**, **ET3**

**MSZ-AP42VG** - **E1**, **EN1**, **ET1**, **ER1**, **E2**, **EN2**, **ET2**, **E3**, **ET3**

**MSZ-AP50VG** - **E1**, **EN1**, **ET1**, **ER1**, **E2**, **EN2**, **ET2**, **E3**, **ET3**

**MSZ-AP60VG** - **E1**, **ET1**, **ER1**, **E2**, **ET2**, **E3**, **ET3**, **E4**, **ET4**

**MSZ-AP71VG** - **E1**, **ET1**, **ER1**, **E2**, **ET2**, **E3**, **ET3**, **E4**, **ET4**

**MSZ-AP25VGK** - **E1**, **EN1**, **ET1**, **ER1**, **E2**, **EN2**, **ET2**, **ER2**, **E3**, **EN3**, **ET3**, **ER3**

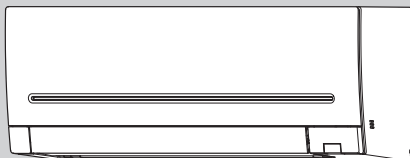
**MSZ-AP35VGK** - **E1**, **EN1**, **ET1**, **ER1**, **E2**, **EN2**, **ET2**, **ER2**, **E3**, **EN3**, **ET3**, **ER3**

**MSZ-AP42VGK** - **E1**, **EN1**, **ET1**, **ER1**, **E2**, **EN2**, **ET2**, **ER2**, **E3**, **EN3**, **ET3**, **ER3**

**MSZ-AP50VGK** - **E1**, **EN1**, **ET1**, **ER1**, **E2**, **EN2**, **ET2**, **ER2**, **E3**, **EN3**, **ET3**, **ER3**

**MSZ-AP60VGK** - **E1**, **ET1**, **ER1**, **E2**, **ET2**, **ER2**, **E3**, **ET3**, **ER3**, **E4**, **ET4**

**MSZ-AP71VGK** - **E1**, **ET1**, **ER1**, **E2**, **ET2**, **ER2**, **E3**, **ET3**, **ER3**, **E4**, **ET4**



## CONTENTS

1. SERVICE PARTS LIST .....	2
2. OPTIONAL PARTS .....	51

**SERVICE MANUAL (OBH788)**

MSZ-AP25VG    MSZ-AP25VGK  
MSZ-AP35VG    MSZ-AP35VGK  
MSZ-AP42VG    MSZ-AP42VGK  
MSZ-AP50VG    MSZ-AP50VGK

### Revision A:

• MSZ-AP25/35/42/50VG(K)- [ET1] have been added.

### Revision B:

• MSZ-AP25/35/42VG(K)- [ER1] and MSZ-AP60/71VG(K)- [E1], [ET1] have been added.

### Revision C:

• MSZ-AP25/35/42VG- [E2], [EN2], [ET2], MSZ-AP25/35/42VGK- [E2], [EN2], [ET2], MSZ-AP50VG- [ER1], [E2], [EN2], [ET2], MSZ-AP50VGK- [ER1], [E2], [EN2], [ET2], MSZ-AP60/71VG- [ER1], [E2], [ET2], MSZ-AP60/71VGK- [ER1], [E2], [ET2], have been added.

### Revision D:

• Parts numbers of REMOTE CONTROLLER for MSZ-AP25/35/42/50VG- [ER1], MSZ-AP25/35/42/50VGK- [ER1], ELECTRONIC CONTROL P.C. BOARD for MSZ-AP25/35/42/50/60/71VG- [E2], MSZ-AP25/35/42/50/60/71VGK- [E2], MSZ-AP60/71VG- [ET2] and MSZ-AP60/71VGK- [ET2] have been revised.

### Revision E:

• MSZ-AP25/35/42/50/60/71VGK- [ER2] have been added.

### Revision F:

• MSZ-AP25/35/42/50/60/71VG - [E3], [ET3], MSZ-AP25/35/42/50/60/71VGK - [E3], [ET3], [ER3] and MSZ-AP25/35/42/50VGK - [EN3] have been added.

### Revision G:

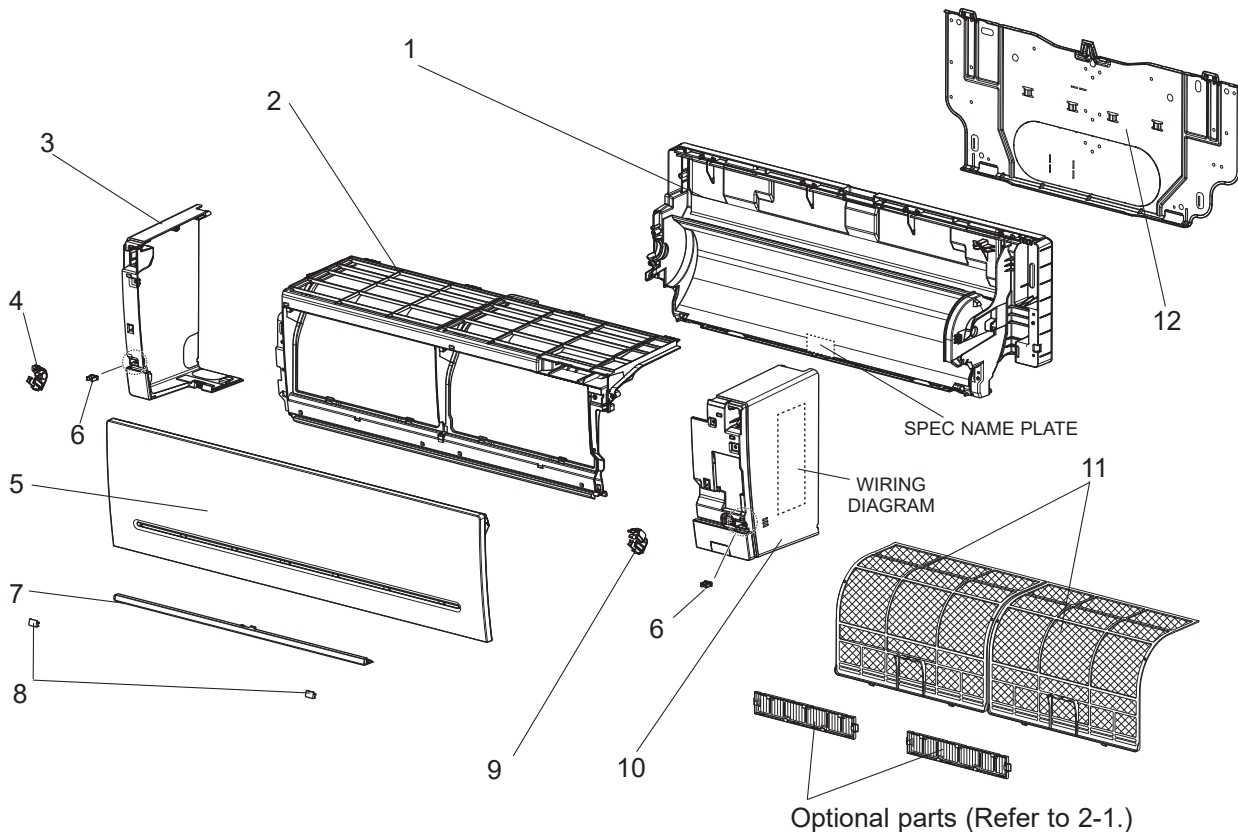
• MSZ-AP60/71VG - [E4], [ET4] and MSZ-AP60/71VGK - [E4], [ET4] have been added.

## 1 SERVICE PARTS LIST

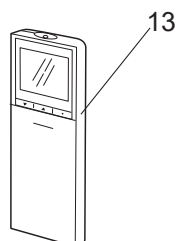
MSZ-AP25VG - [E1], [EN1], [ET1], [ER1] MSZ-AP35VG - [E1], [EN1], [ET1], [ER1]

MSZ-AP42VG - [E1], [EN1], [ET1], [ER1] MSZ-AP50VG - [E1], [EN1], [ET1], [ER1]

### 1-1. INDOOR UNIT STRUCTURAL PARTS



### 1-2. ACCESSORY AND REMOTE CONTROLLER



## 1-1. INDOOR UNIT STRUCTURAL PARTS

1. The part quantity below indicates the required number of pieces per unit.

No.	Part No.	Part name	MSZ-AP25VG - E1	MSZ-AP25VG - EN1	MSZ-AP25VG - ET1	MSZ-AP25VG - ER1	MSZ-AP35VG - E1	MSZ-AP35VG - EN1	MSZ-AP35VG - ET1	MSZ-AP35VG - ER1	MSZ-AP42VG - E1	MSZ-AP42VG - EN1	MSZ-AP42VG - ET1	MSZ-AP42VG - ER1	MSZ-AP50VG - E1	MSZ-AP50VG - EN1	MSZ-AP50VG - ET1	MSZ-AP50VG - ER1	Symbol in Wiring Diagram	Remarks
			1	1	1	1	1	1	1	1	1	1	1	1	1	1	1	1		
1	G2W 001 026	BOX ASSEMBLY	1	1	1	1	1	1	1	1	1	1	1	1	1	1	1	1		Not including SPEC NAME PLATE
2	G2W 001 003	PANEL (FRONT) ASSEMBLY	1	1	1	1	1	1	1	1	1	1	1	1	1	1	1	1		
3	G2W 001 020	PANEL (LEFT) ASSEMBLY	1	1	1	1	1	1	1	1	1	1	1	1	1	1	1	1		Includes No. 4 and 6
4	G2W 001 120	ARM HOLDER (LEFT)	1	1	1	1	1	1	1	1	1	1	1	1	1	1	1	1		
5	G2W 001 010	FRONT PANEL	1	1	1	1	1	1	1	1	1	1	1	1	1	1	1	1		
6	G2W 001 118	CATCH	2	2	2	2	2	2	2	2	2	2	2	2	2	2	2	2		
7	G2W 001 006	PANEL (UNDER) ASSEMBLY	1	1	1	1	1	1	1	1	1	1	1	1	1	1	1	1		
8	G2W 001 023	SCREW CAP	2	2	2	2	2	2	2	2	2	2	2	2	2	2	2	2		
9	G2W 002 120	ARM HOLDER (RIGHT)	1	1	1	1	1	1	1	1	1	1	1	1	1	1	1	1		
10	G2W 001 014	PANEL (RIGHT)ASSEMBLY	1	1	1		1	1	1		1	1	1		1	1	1			Includes No. 6 and 9 Not including WIRING DIAGRAM
10	G2W 002 014	PANEL (RIGHT)ASSEMBLY				1				1				1			1			
11	G2W 001 100	AIR FILTER	2	2	2	2	2	2	2	2	2	2	2	2	2	2	2	2		1 PC/SET
12	G2W 001 115	INSTALLATION PLATE	1	1	1	1	1	1	1	1	1	1	1	1	1	1	1	1		

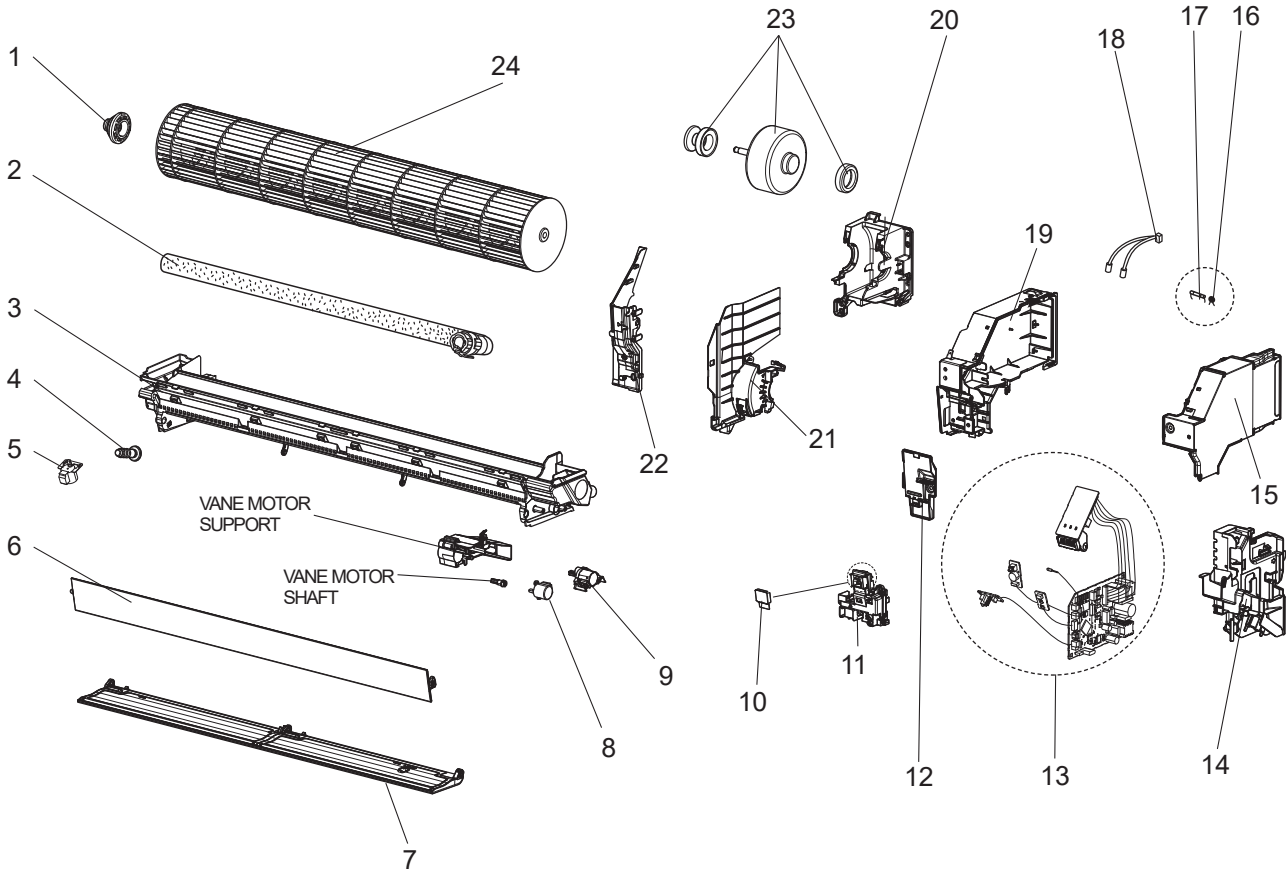
## 1-2. ACCESSORY AND REMOTE CONTROLLER

1. The part quantity below indicates the required number of pieces per unit.

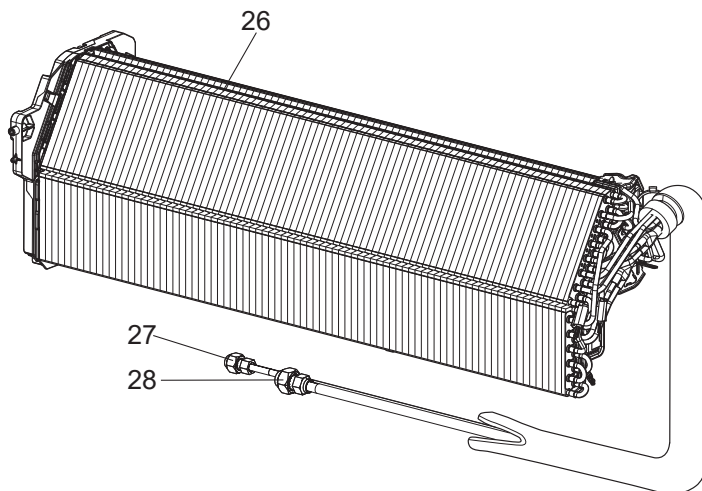
No.	Part No.	Part name	MSZ-AP25VG - E1	MSZ-AP25VG - EN1	MSZ-AP25VG - ET1	MSZ-AP25VG - ER1	MSZ-AP35VG - E1	MSZ-AP35VG - EN1	MSZ-AP35VG - ET1	MSZ-AP35VG - ER1	MSZ-AP42VG - E1	MSZ-AP42VG - EN1	MSZ-AP42VG - ET1	MSZ-AP42VG - ER1	MSZ-AP50VG - E1	MSZ-AP50VG - EN1	MSZ-AP50VG - ET1	MSZ-AP50VG - ER1	Symbol in Wiring Diagram	Remarks
			1	1	1		1	1	1		1	1	1		1	1	1			
13	G2W 001 400	REMOTE CONTROLLER	1	1	1		1	1	1		1	1	1		1	1	1			SG17B
13	G2W 004 400	REMOTE CONTROLLER				1				1				1				1		SG17B

MSZ-AP25VG - E1, EN1, ET1, ER1 MSZ-AP35VG - E1, EN1, ET1, ER1  
 MSZ-AP42VG - E1, EN1, ET1, ER1 MSZ-AP50VG - E1, EN1, ET1, ER1

**1-3. INDOOR UNIT ELECTRICAL PARTS AND FUNCTIONAL PARTS**



**1-4. INDOOR UNIT HEAT EXCHANGER**





### 1-3. INDOOR UNIT ELECTRICAL PARTS AND FUNCTIONAL PARTS

- The part quantity below indicates the required number of pieces per unit.
- The circled No. indicates that the part is not shown in the figure.

No.	Part No.	Part name	MSZ-AP25VG - E1	MSZ-AP25VG - EN1	MSZ-AP25VG - ET1	MSZ-AP25VG - ER1	MSZ-AP35VG - E1	MSZ-AP35VG - EN1	MSZ-AP35VG - ET1	MSZ-AP35VG - ER1	MSZ-AP42VG - E1	MSZ-AP42VG - EN1	MSZ-AP42VG - ET1	MSZ-AP42VG - ER1	MSZ-AP50VG - E1	MSZ-AP50VG - EN1	MSZ-AP50VG - ET1	MSZ-AP50VG - ER1	Symbol in Wiring Diagram	Remarks [Drawing No.]
1	G2W 002 520	BEARING MOUNT ASSEMBLY	1	1	1	1	1	1	1	1	1	1	1	1	1	1	1	1		Includes sleeve bearing
2	G2W 001 110	DRAIN HOSE ASSEMBLY(SHORT)	1		1	1	1		1	1	1		1	1	1		1	1		520 mm
2	G2W 002 110	DRAIN HOSE ASSEMBLY (LONG)		1				1				1				1				670 mm
3	G2W 001 030	NOZZLE ASSEMBLY	1	1	1	1	1	1	1	1	1	1	1	1	1	1	1	1		
4	G2W 001 708	DRAIN CAP	1	1	1	1	1	1	1	1	1	1	1	1	1	1	1	1		
5	G2W 001 320	VANE MOTOR (VERTICAL)	1	1	1	1	1	1	1	1	1	1	1	1	1	1	1	1	MV3	RIGHT & LEFT
6	G2W 001 017	HORIZONTAL VANE (UPPER) ASSEMBLY	1	1	1	1	1	1	1	1	1	1	1	1	1	1	1	1		Includes shaft
7	G2W 002 017	HORIZONTAL VANE (LOWER) ASSEMBLY	1	1	1	1	1	1	1	1	1	1	1	1	1	1	1	1		Includes shaft
8	G2W 001 315	VANE MOTOR (HORIZONTAL) (UPPER)	1	1	1	1	1	1	1	1	1	1	1	1	1	1	1	1	MV1	UP & DOWN
9	G2W 002 315	VANE MOTOR (HORIZONTAL) (LOWER)	1	1	1	1	1	1	1	1	1	1	1	1	1	1	1	1	MV2	UP & DOWN
10	—	SWITCH SHEET	1	1	1	1	1	1	1	1	1	1	1	1	1	1	1	1		[ DY79D318H01 ]
11	—	DISPLAY AND RECEIVER P.C. BOARD HOLDER ASSEMBLY	1	1	1	1	1	1	1	1	1	1	1	1	1	1	1	1		[ DY25A812G02 ]
12	—	V.A. CLAMP ASSEMBLY	1	1	1	1	1	1	1	1	1	1	1	1	1	1	1	1		[ DK00G212G01 ]
13	G2W 004 410	ELECTRONIC CONTROL P.C. BOARD	1	1	1	1														Includes RECEIVER P.C. BOARD, DISPLAY P.C. BOARD, SWITCH/BUZZER P.C. BOARD, TERMINAL P.C. BOARD and ROOM TEMPERATURE THERMISTOR (RT11)
13	G2W 003 410	ELECTRONIC CONTROL P.C. BOARD					1	1	1	1										
13	G2W 002 410	ELECTRONIC CONTROL P.C. BOARD									1	1	1	1						
13	G2W 001 410	ELECTRONIC CONTROL P.C. BOARD													1	1	1	1		
14	—	CABLE GUIDE	1	1	1	1	1	1	1	1	1	1	1	1	1	1	1	1		[ DY25A811G02 ]
15	—	PB-COVER (RIGHT)	1	1	1	1	1	1	1	1	1	1	1	1	1	1	1	1		[ DK00G213G01 ]
16	G2W 001 425	VARISTOR	1	1	1	1	1	1	1	1	1	1	1	1	1	1	1	1	NR11	
17	G2W 001 422	FUSE	1	1	1	1	1	1	1	1	1	1	1	1	1	1	1	1	F11	T3.15AL250V
18	G2W 002 310	INDOOR COIL THERMISTOR										1	1	1	1	1	1	1	RT12, RT13	
18	G2W 001 310	INDOOR COIL THERMISTOR	1	1	1	1	1	1	1	1										
19	—	PB-COVER (LEFT)	1	1	1	1	1	1	1	1	1	1	1	1	1	1	1	1		[ DK00G223G03 ]
20	—	MOTOR BED	1	1	1	1	1	1	1	1	1	1	1	1	1	1	1	1		[ SQ00C989G04 ]
21	G2W 001 103	MOTOR BAND	1	1	1	1	1	1	1	1	1	1	1	1	1	1	1	1		
22	—	WATER COVER	1	1	1	1	1	1	1	1	1	1	1	1	1	1	1	1		[ SQ25Y723G02 ]
23	G2W 001 300	INDOOR FAN MOTOR	1	1	1	1	1	1	1	1	1	1	1	1	1	1	1	1	MF	RC0J30-□□ Includes FAN MOTOR RUBBER MOUNT (2 PCS/SET)
24	G2W 001 500	LINE FLOW FAN	1	1	1	1	1	1	1	1	1	1	1	1	1	1	1	1		
(25)	—	LEAD WIRE	1	1	1	1	1	1	1	1	1	1	1	1	1	1	1	1		[ SM00C948G02 ] Between CN151 on ELECTRONIC CONTROL P.C. BOARD and VANE MOTOR

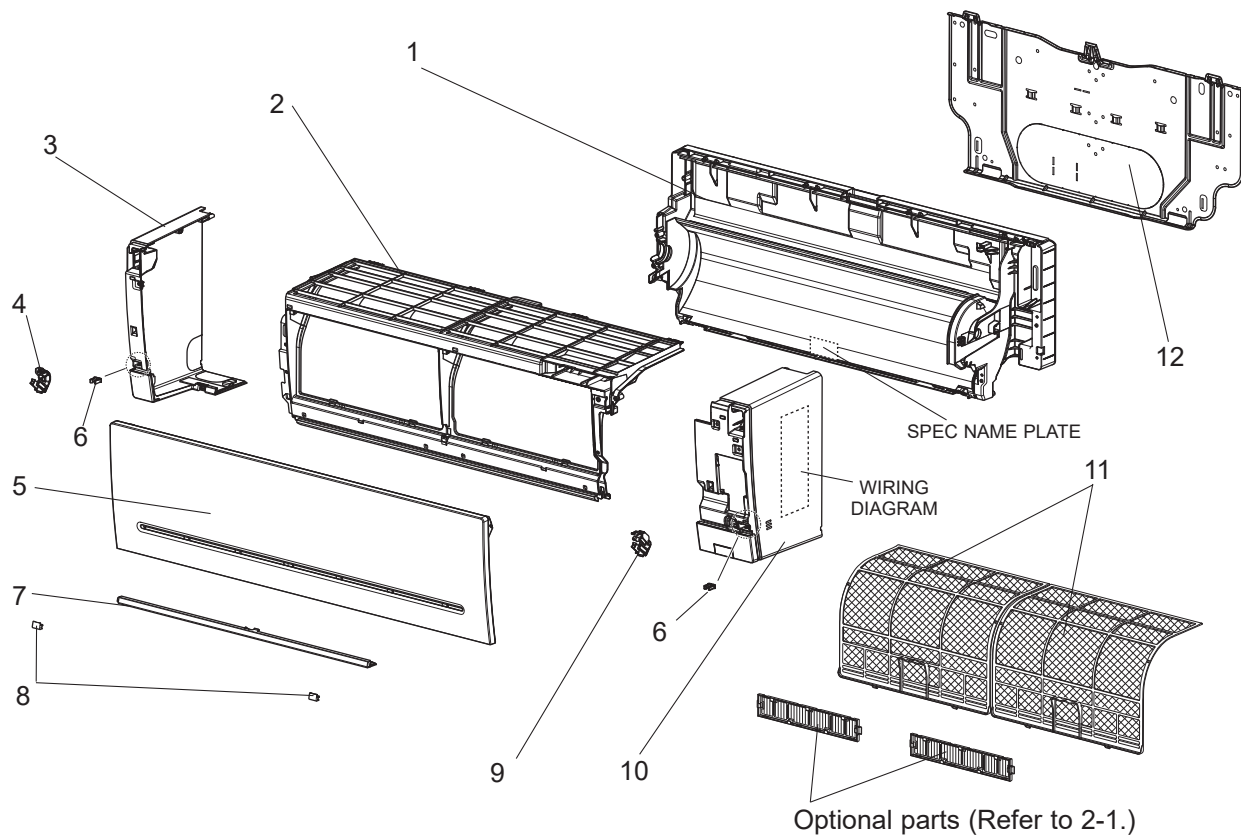
### 1-4. INDOOR UNIT HEAT EXCHANGER

- The part quantity below indicates the required number of pieces per unit.

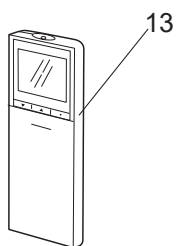
No.	Part No.	Part name	MSZ-AP25VG - E1	MSZ-AP25VG - EN1	MSZ-AP25VG - ET1	MSZ-AP25VG - ER1	MSZ-AP35VG - E1	MSZ-AP35VG - EN1	MSZ-AP35VG - ET1	MSZ-AP35VG - ER1	MSZ-AP42VG - E1	MSZ-AP42VG - EN1	MSZ-AP42VG - ET1	MSZ-AP42VG - ER1	MSZ-AP50VG - E1	MSZ-AP50VG - EN1	MSZ-AP50VG - ET1	MSZ-AP50VG - ER1	Symbol in Wiring Diagram	Remarks
26	G2W 001 600	INDOOR HEAT EXCHANGER	1		1	1	1		1	1										Includes No. 27 and 28
26	G2W 002 600	INDOOR HEAT EXCHANGER									1		1	1	1			1		Includes No. 27 and 28
26	G2W 003 600	INDOOR HEAT EXCHANGER		1				1												Includes No. 27 and 28
26	G2W 004 600	INDOOR HEAT EXCHANGER										1				1				Includes No. 27 and 28
27	G2W 001 605	UNION (LIQUID)	1	1	1	1	1	1	1	1	1	1	1	1	1	1	1	1		ø6.35
28	G2W 002 605	UNION (GAS)	1	1	1	1	1	1	1	1	1	1	1	1	1	1	1	1		ø9.52

**MSZ-AP25VG** -    **MSZ-AP35VG** -     
**MSZ-AP42VG** -    **MSZ-AP50VG** -   

### 1-5. INDOOR UNIT STRUCTURAL PARTS



### 1-6. ACCESSORY AND REMOTE CONTROLLER



## 1-5. INDOOR UNIT STRUCTURAL PARTS

1. The part quantity below indicates the required number of pieces per unit.

No.	Part No.	Part name	MSZ-AP25VG - E2	MSZ-AP25VG - EN2	MSZ-AP25VG - ET2	MSZ-AP35VG - E2	MSZ-AP35VG - EN2	MSZ-AP35VG - ET2	MSZ-AP42VG - E2	MSZ-AP42VG - EN2	MSZ-AP42VG - ET2	MSZ-AP50VG - E2	MSZ-AP50VG - EN2	MSZ-AP50VG - ET2	Symbol in Wiring Diagram	Remarks
1	G2W 001 026	BOX ASSEMBLY	1	1	1	1	1	1	1	1	1	1	1	1		Not including SPEC NAME PLATE
2	G2W 001 003	PANEL (FRONT) ASSEMBLY	1	1	1	1	1	1	1	1	1	1	1	1		
3	G2W 001 020	PANEL (LEFT) ASSEMBLY	1	1	1	1	1	1	1	1	1	1	1	1		Includes No. 4 and 6
4	G2W 001 120	ARM HOLDER (LEFT)	1	1	1	1	1	1	1	1	1	1	1	1		
5	G2W 001 010	FRONT PANEL	1	1	1	1	1	1	1	1	1	1	1	1		
6	G2W 001 118	CATCH	2	2	2	2	2	2	2	2	2	2	2	2		
7	G2W 001 006	PANEL (UNDER) ASSEMBLY	1	1	1	1	1	1	1	1	1	1	1	1		
8	G2W 001 023	SCREW CAP	2	2	2	2	2	2	2	2	2	2	2	2		
9	G2W 002 120	ARM HOLDER (RIGHT)	1	1	1	1	1	1	1	1	1	1	1	1		
10	G2W 001 014	PANEL (RIGHT) ASSEMBLY	1	1	1	1	1	1	1	1	1	1	1	1		Includes No. 6 and 9 Not including WIRING DIAGRAM
11	G2W 001 100	AIR FILTER	2	2	2	2	2	2	2	2	2	2	2	2		1 PC/SET
12	G2W 001 115	INSTALLATION PLATE	1	1	1	1	1	1	1	1	1	1	1	1		

## 1-6. ACCESSORY AND REMOTE CONTROLLER

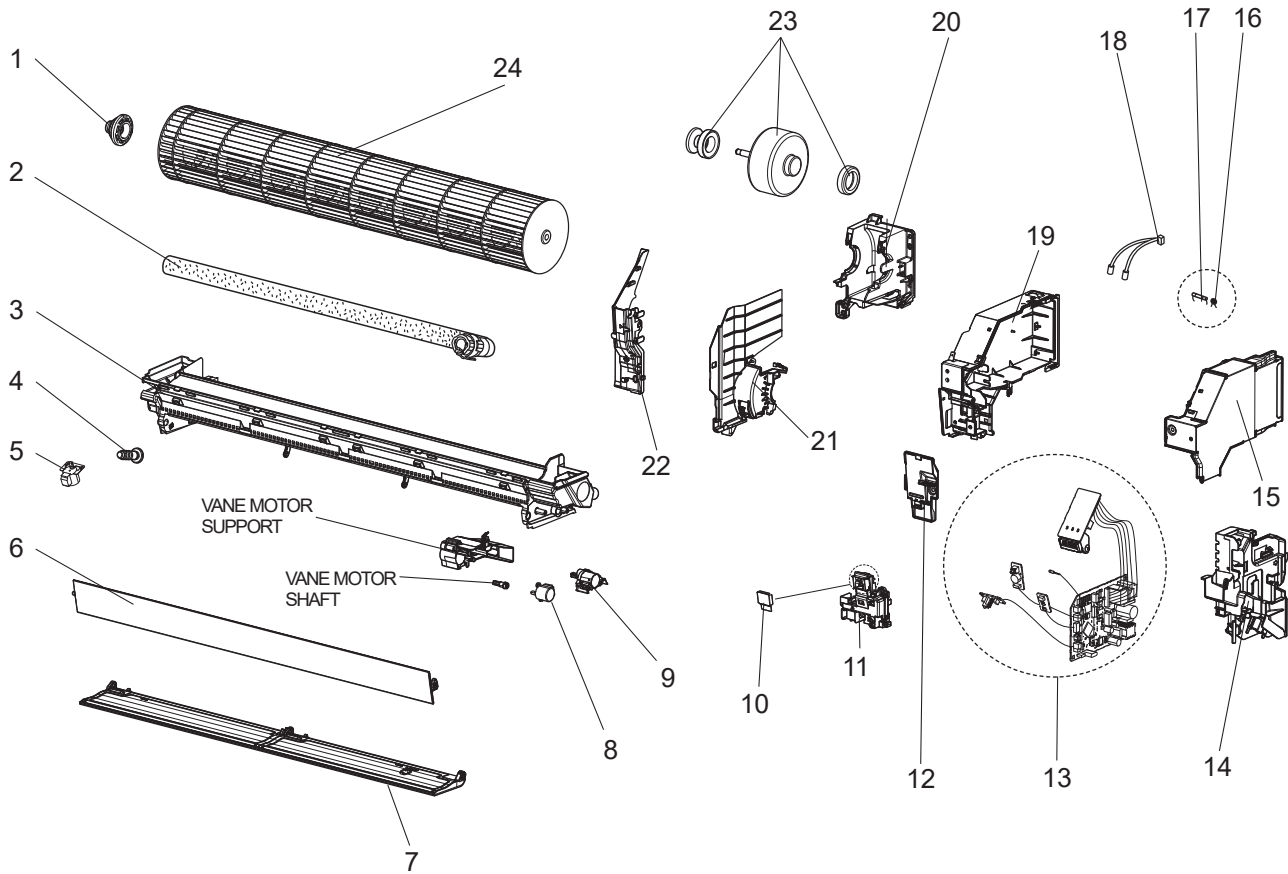
1. The part quantity below indicates the required number of pieces per unit.

No.	Part No.	Part name	MSZ-AP25VG - E2	MSZ-AP25VG - EN2	MSZ-AP25VG - ET2	MSZ-AP35VG - E2	MSZ-AP35VG - EN2	MSZ-AP35VG - ET2	MSZ-AP42VG - E2	MSZ-AP42VG - EN2	MSZ-AP42VG - ET2	MSZ-AP50VG - E2	MSZ-AP50VG - EN2	MSZ-AP50VG - ET2	Symbol in Wiring Diagram	Remarks
13	G2W 005 400	REMOTE CONTROLLER	1	1	1	1	1	1	1	1	1	1	1	1		SH20A

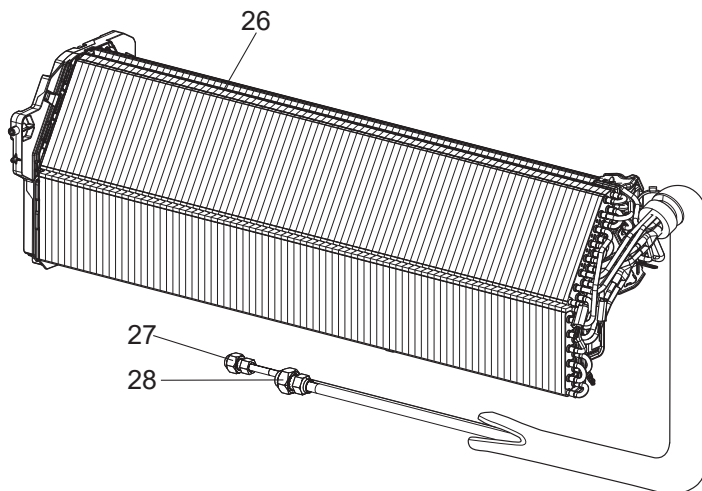
MSZ-AP25VG - E2, EN2, ET2 MSZ-AP35VG - E2, EN2, ET2

MSZ-AP42VG - E2, EN2, ET2 MSZ-AP50VG - E2, EN2, ET2

### 1-7. INDOOR UNIT ELECTRICAL PARTS AND FUNCTIONAL PARTS



### 1-8. INDOOR UNIT HEAT EXCHANGER



## 1-7. INDOOR UNIT ELECTRICAL PARTS AND FUNCTIONAL PARTS

- The part quantity below indicates the required number of pieces per unit.
- The circled No. indicates that the part is not shown in the figure.

No.	Part No.	Part name	MSZ-AP25VG - E2	MSZ-AP25VG - E2	MSZ-AP25VG - E2	MSZ-AP35VG - E2	MSZ-AP35VG - E2	MSZ-AP35VG - E2	MSZ-AP42VG - E2	MSZ-AP42VG - E2	MSZ-AP50VG - E2	MSZ-AP50VG - E2	MSZ-AP50VG - E2	Symbol in Wiring Diagram	Remarks [Drawing No.]
1	G2W 001 520	BEARING MOUNT ASSEMBLY	1	1	1	1	1	1	1	1	1	1	1		Includes sleeve bearing
2	G2W 001 110	DRAIN HOSE ASSEMBLY (SHORT)	1		1	1		1	1		1	1	1		520 mm
2	G2W 002 110	DRAIN HOSE ASSEMBLY (LONG)		1			1		1			1			670 mm
3	G2W 001 030	NOZZLE ASSEMBLY	1	1	1	1	1	1	1	1	1	1	1		
4	G2W 001 708	DRAIN CAP	1	1	1	1	1	1	1	1	1	1	1		
5	G2W 001 320	VANE MOTOR (VERTICAL)	1	1	1	1	1	1	1	1	1	1	1	MV3	RIGHT & LEFT
6	G2W 001 017	HORIZONTAL VANE (UPPER) ASSEMBLY	1	1	1	1	1	1	1	1	1	1	1		Includes shaft
7	G2W 002 017	HORIZONTAL VANE (LOWER) ASSEMBLY	1	1	1	1	1	1	1	1	1	1	1		Includes shaft
8	G2W 001 315	VANE MOTOR (HORIZONTAL) (UPPER)	1	1	1	1	1	1	1	1	1	1	1	MV1	UP & DOWN
9	G2W 002 315	VANE MOTOR (HORIZONTAL) (LOWER)	1	1	1	1	1	1	1	1	1	1	1	MV2	UP & DOWN
10	—	SWITCH SHEET	1	1	1	1	1	1	1	1	1	1	1		[ DY79D306H01 ]
11	—	DISPLAY AND RECEIVER P.C. BOARD HOLDER ASSEMBLY	1	1	1	1	1	1	1	1	1	1	1		[ DY25A812G02 ]
12	—	V.A. CLAMP ASSEMBLY	1	1	1	1	1	1	1	1	1	1	1		[ DK00G212G01 ]
13	G2W 009 410	ELECTRONIC CONTROL P.C. BOARD	1	1	1										Includes RECEIVER P.C. BOARD, DISPLAY P.C. BOARD, SWITCH/BUZZER P.C. BOARD, TERMINAL P.C. BOARD and ROOM TEMPERATURE THERMISTOR (RT11)
13	G2W 010 410	ELECTRONIC CONTROL P.C. BOARD				1	1	1							
13	G2W 011 410	ELECTRONIC CONTROL P.C. BOARD							1	1	1				
13	G2W 012 410	ELECTRONIC CONTROL P.C. BOARD									1	1	1		
14	—	CABLE GUIDE	1	1	1	1	1	1	1	1	1	1	1		[ DY25A811G02 ]
15	—	PB-COVER (RIGHT)	1	1	1	1	1	1	1	1	1	1	1		[ DK00G213G02 ]
16	G2W 001 425	VARISTOR	1	1	1	1	1	1	1	1	1	1	1	NR11	
17	G2W 001 422	FUSE	1	1	1	1	1	1	1	1	1	1	1	F11	T3.15AL250V
18	G2W 002 310	INDOOR COIL THERMISTOR							1	1	1	1	1	RT12	
18	G2W 001 310	INDOOR COIL THERMISTOR	1	1	1	1	1	1						RT13	
19	—	PB-COVER (LEFT)	1	1	1	1	1	1	1	1	1	1	1		[ DK00G223G03 ]
20	—	MOTOR BED	1	1	1	1	1	1	1	1	1	1	1		[ SQ00C989G05 ]
21	G2W 001 103	MOTOR BAND	1	1	1	1	1	1	1	1	1	1	1		
22	—	WATER COVER	1	1	1	1	1	1	1	1	1	1	1		[ SQ25Y723G02 ]
23	G2W 001 300	INDOOR FAN MOTOR	1	1	1	1	1	1	1	1	1	1	1	MF	RC0J30-□□ Includes FAN MOTOR RUBBER MOUNT (2 PCS/SET)
24	G2W 001 500	LINE FLOW FAN	1	1	1	1	1	1	1	1	1	1	1		
②5	—	LEAD WIRE	1	1	1	1	1	1	1	1	1	1	1		[ SM00C948G02 ] Between CN151 on ELECTRONIC CONTROL P.C. BOARD and VANE MOTOR

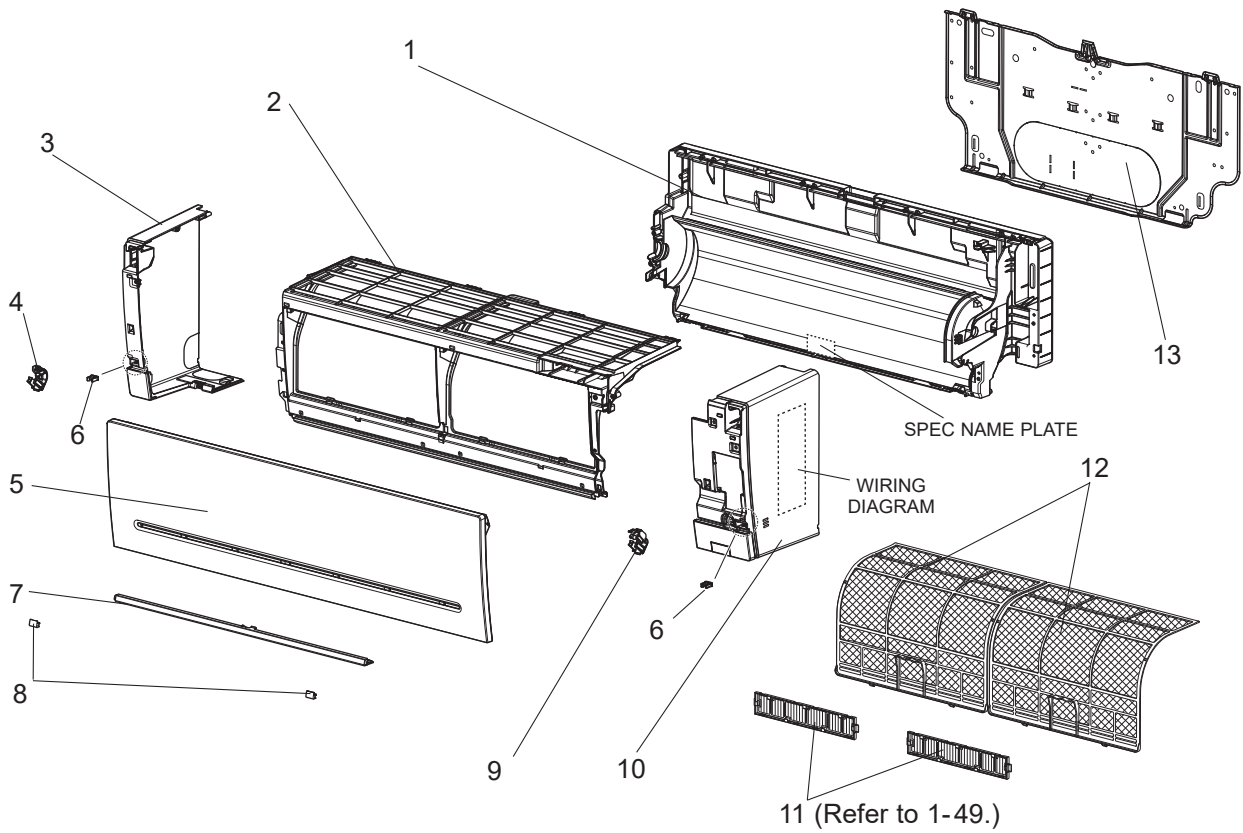
## 1-8. INDOOR UNIT HEAT EXCHANGER

- The part quantity below indicates the required number of pieces per unit.

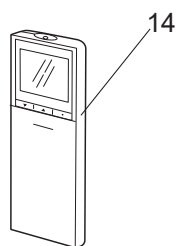
No.	Part No.	Part name	MSZ-AP25VG - E2	MSZ-AP25VG - E2	MSZ-AP25VG - E2	MSZ-AP35VG - E2	MSZ-AP35VG - E2	MSZ-AP35VG - E2	MSZ-AP42VG - E2	MSZ-AP42VG - E2	MSZ-AP50VG - E2	MSZ-AP50VG - E2	MSZ-AP50VG - E2	Symbol in Wiring Diagram	Remarks
26	G2W 001 600	INDOOR HEAT EXCHANGER	1		1	1		1					1		Includes No. 27 and 28
26	G2W 002 600	INDOOR HEAT EXCHANGER							1				1		Includes No. 27 and 28
26	G2W 003 600	INDOOR HEAT EXCHANGER		1			1								Includes No. 27 and 28
26	G2W 004 600	INDOOR HEAT EXCHANGER							1			1			Includes No. 27 and 28
27	G2W 001 605	UNION (LIQUID)	1	1	1	1	1	1	1	1	1	1	1		ø6.35
28	G2W 002 605	UNION (GAS)	1	1	1	1	1	1	1	1	1	1	1		ø9.52

**MSZ-AP25VG** - E3, ET3    **MSZ-AP35VG** - E3, ET3  
**MSZ-AP42VG** - E3, ET3    **MSZ-AP50VG** - E3, ET3

**1-9. INDOOR UNIT STRUCTURAL PARTS**



**1-10. ACCESSORY AND REMOTE CONTROLLER**



## 1-9. INDOOR UNIT STRUCTURAL PARTS

1. The part quantity below indicates the required number of pieces per unit.

No.	Part No.	Part name	MSZ-AP25VG - E3	MSZ-AP25VG - E13	MSZ-AP35VG - E3	MSZ-AP35VG - E13	MSZ-AP42VG - E3	MSZ-AP42VG - E13	MSZ-AP50VG - E3	MSZ-AP50VG - E13	Symbol in Wiring Diagram	Remarks
1	G2W 001 026	BOX ASSEMBLY	1	1	1	1	1	1	1	1		Not including SPEC NAME PLATE
2	G2W 001 003	PANEL (FRONT) ASSEMBLY	1	1	1	1	1	1	1	1		
3	G2W 001 020	PANEL (LEFT) ASSEMBLY	1	1	1	1	1	1	1	1		Includes No. 4 and 6
4	G2W 001 120	ARM HOLDER (LEFT)	1	1	1	1	1	1	1	1		
5	G2W 001 010	FRONT PANEL	1	1	1	1	1	1	1	1		
6	G2W 001 118	CATCH	2	2	2	2	2	2	2	2		
7	G2W 001 006	PANEL (UNDER) ASSEMBLY	1	1	1	1	1	1	1	1		
8	G2W 001 023	SCREW CAP	2	2	2	2	2	2	2	2		
9	G2W 002 120	ARM HOLDER (RIGHT)	1	1	1	1	1	1	1	1		
10	G2W 001 014	PANEL (RIGHT) ASSEMBLY	1	1	1	1	1	1	1	1		Includes No. 6 and 9 Not including WIRING DIAGRAM
11	—	AIR CLEANING FILTER (V BLOCKING FILTER)	2	2	2	2	2	2	2	2		2 PCS/SET MAC-2470FT-E
12	G2W 001 100	AIR FILTER	2	2	2	2	2	2	2	2		1 PC/SET
13	G2W 001 115	INSTALLATION PLATE	1	1	1	1	1	1	1	1		

## 1-10. ACCESSORY AND REMOTE CONTROLLER

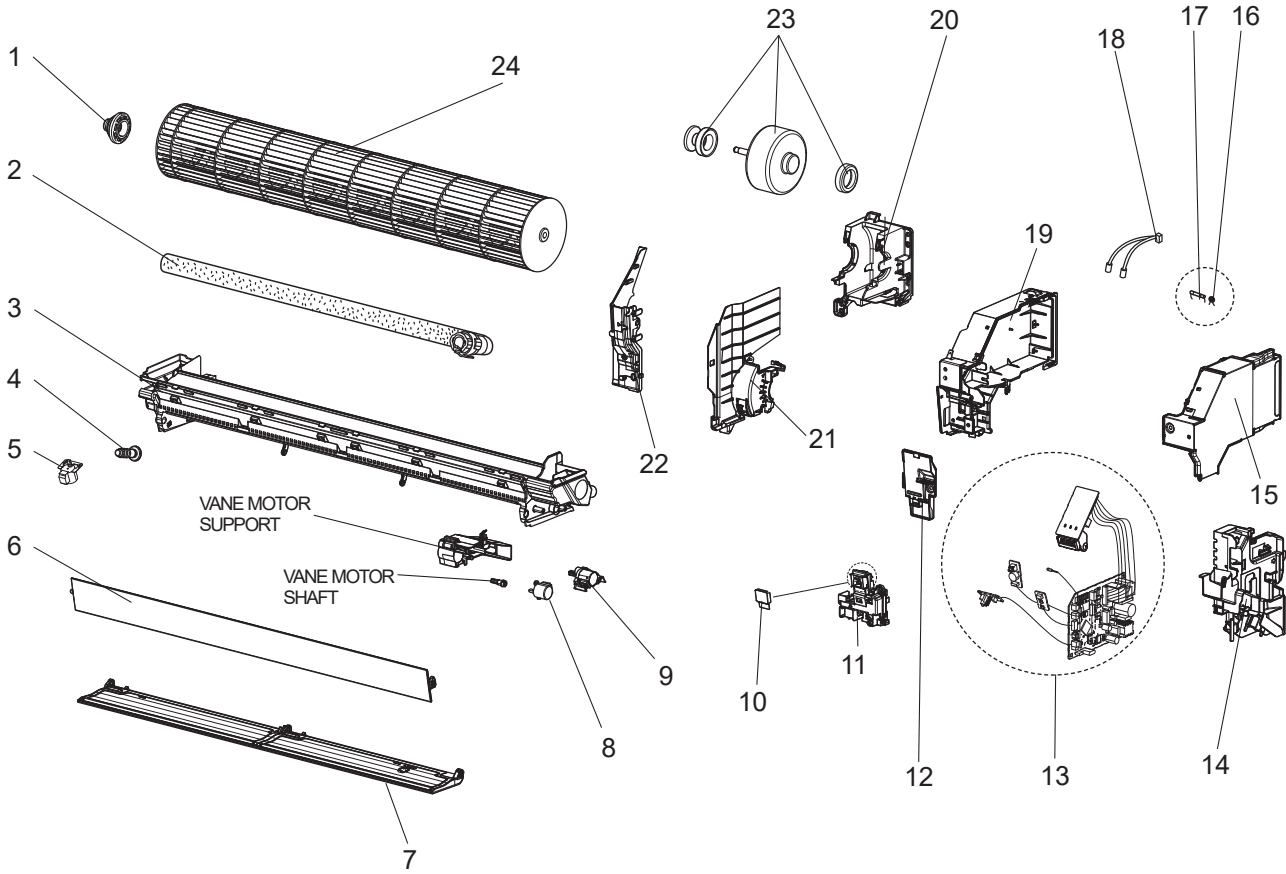
1. The part quantity below indicates the required number of pieces per unit.

No.	Part No.	Part name	MSZ-AP25VG - E3	MSZ-AP25VG - E13	MSZ-AP35VG - E3	MSZ-AP35VG - E13	MSZ-AP42VG - E3	MSZ-AP42VG - E13	MSZ-AP50VG - E3	MSZ-AP50VG - E13	Symbol in Wiring Diagram	Remarks
14	G2W 005 400	REMOTE CONTROLLER	1	1	1	1	1	1	1	1		SH20A

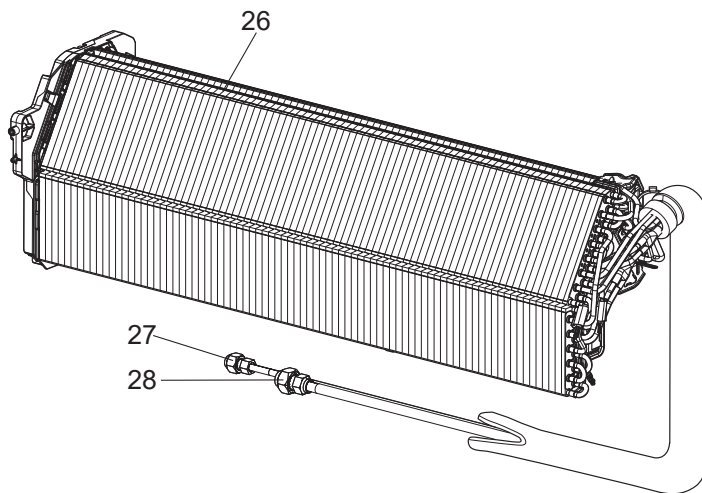


MSZ-AP25VG - E3, ET3 MSZ-AP35VG - E3, ET3  
 MSZ-AP42VG - E3, ET3 MSZ-AP50VG - E3, ET3

**1-11. INDOOR UNIT ELECTRICAL PARTS AND FUNCTIONAL PARTS**



**1-12. INDOOR UNIT HEAT EXCHANGER**



## 1-11. INDOOR UNIT ELECTRICAL PARTS AND FUNCTIONAL PARTS

- The part quantity below indicates the required number of pieces per unit.
- The circled No. indicates that the part is not shown in the figure.

No.	Part No.	Part name	MSZ-AP25VG - E3	MSZ-AP25VG - ET3	MSZ-AP35VG - E3	MSZ-AP35VG - ET3	MSZ-AP42VG - E3	MSZ-AP42VG - ET3	MSZ-AP50VG - E3	MSZ-AP50VG - ET3	Symbol in Wiring Diagram	Remarks [Drawing No.]
1	G2W 001 520	BEARING MOUNT ASSEMBLY	1	1	1	1	1	1	1	1		Includes sleeve bearing
2	G2W 001 110	DRAIN HOSE ASSEMBLY (SHORT)	1	1	1	1	1	1	1	1		520 mm
3	G2W 001 030	NOZZLE ASSEMBLY	1	1	1	1	1	1	1	1		
4	G2W 001 708	DRAIN CAP	1	1	1	1	1	1	1	1		
5	G2W 001 320	VANE MOTOR (VERTICAL)	1	1	1	1	1	1	1	1	MV3	RIGHT & LEFT
6	G2W 001 017	HORIZONTAL VANE (UPPER) ASSEMBLY	1	1	1	1	1	1	1	1		Includes shaft
7	G2W 002 017	HORIZONTAL VANE (LOWER) ASSEMBLY	1	1	1	1	1	1	1	1		Includes shaft
8	G2W 001 315	VANE MOTOR (HORIZONTAL) (UPPER)	1	1	1	1	1	1	1	1	MV1	UP & DOWN
9	G2W 002 315	VANE MOTOR (HORIZONTAL) (LOWER)	1	1	1	1	1	1	1	1	MV2	UP & DOWN
10	—	SWITCH SHEET	1	1	1	1	1	1	1	1		[ DY79D306H01 ]
11	—	DISPLAY AND RECEIVER P.C. BOARD HOLDER ASSEMBLY	1	1	1	1	1	1	1	1		[ DY25A812G02 ]
12	—	V.A. CLAMP ASSEMBLY	1	1	1	1	1	1	1	1		[ DK00G212G01 ]
13	G2W 009 410	ELECTRONIC CONTROL P.C. BOARD	1	1								Includes RECEIVER P.C. BOARD, DISPLAY P.C. BOARD, SWITCH/BUZZER P.C. BOARD, TERMINAL P.C. BOARD and ROOM TEMPERATURE THERMISTOR (RT11)
13	G2W 010 410	ELECTRONIC CONTROL P.C. BOARD			1	1						
13	G2W 011 410	ELECTRONIC CONTROL P.C. BOARD					1	1				
13	G2W 012 410	ELECTRONIC CONTROL P.C. BOARD							1	1		
14	—	CABLE GUIDE	1	1	1	1	1	1	1	1		[ DY25A811G02 ]
15	—	PB-COVER (RIGHT)	1	1	1	1	1	1	1	1		[ DK00G213G02 ]
16	G2W 001 425	VARIATOR	1	1	1	1	1	1	1	1	NR11	
17	G2W 001 422	FUSE	1	1	1	1	1	1	1	1	F11	T3.15AL250V
18	G2W 002 310	INDOOR COIL THERMISTOR					1	1	1	1	RT12	
18	G2W 001 310	INDOOR COIL THERMISTOR	1	1	1	1					RT13	
19	—	PB-COVER (LEFT)	1	1	1	1	1	1	1	1		[ DK00G223G03 ]
20	—	MOTOR BED	1	1	1	1	1	1	1	1		[ SQ00C989G05 ]
21	G2W 001 103	MOTOR BAND	1	1	1	1	1	1	1	1		
22	—	WATER COVER	1	1	1	1	1	1	1	1		[ SQ25Y723G02 ]
23	G2W 001 300	INDOOR FAN MOTOR	1	1	1	1	1	1	1	1	MF	RC0J30-□□ Includes FAN MOTOR RUBBER MOUNT (2 PCS/SET)
24	G2W 001 500	LINE FLOW FAN	1	1	1	1	1	1	1	1		
(25)	—	LEAD WIRE	1	1	1	1	1	1	1	1		[ SM00C948G02 ] Between CN151 on ELECTRONIC CONTROL P.C. BOARD and VANE MOTOR

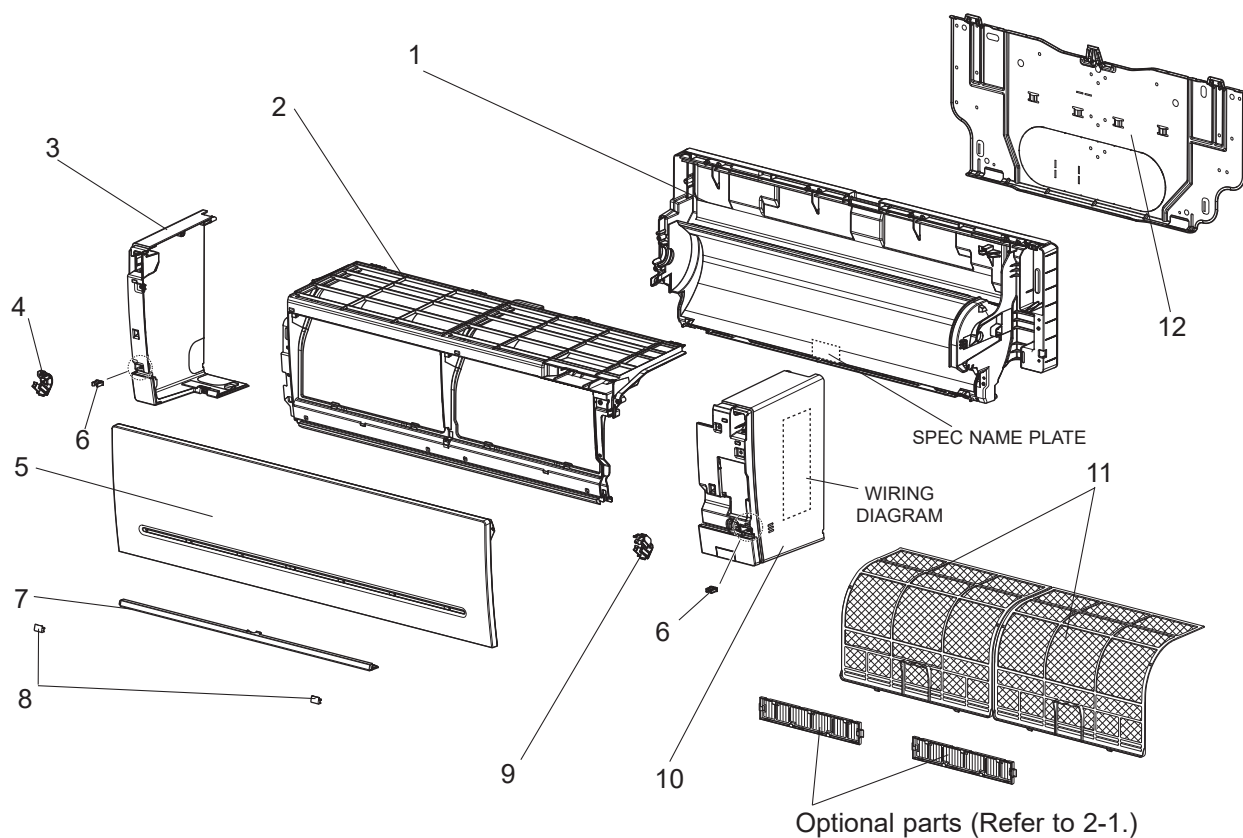
## 1-12. INDOOR UNIT HEAT EXCHANGER

- The part quantity below indicates the required number of pieces per unit.

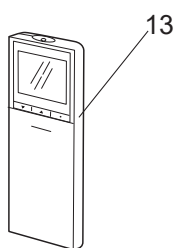
No.	Part No.	Part name	MSZ-AP25VG - E3	MSZ-AP25VG - ET3	MSZ-AP35VG - E3	MSZ-AP35VG - ET3	MSZ-AP42VG - E3	MSZ-AP42VG - ET3	MSZ-AP50VG - E3	MSZ-AP50VG - ET3	Symbol in Wiring Diagram	Remarks
26	G2W 001 600	INDOOR HEAT EXCHANGER	1	1	1	1						Includes No. 27 and 28
26	G2W 002 600	INDOOR HEAT EXCHANGER					1	1	1	1		Includes No. 27 and 28
27	G2W 001 605	UNION (LIQUID)	1	1	1	1	1	1	1	1		ø6.35
28	G2W 002 605	UNION (GAS)	1	1	1	1	1	1	1	1		ø9.52

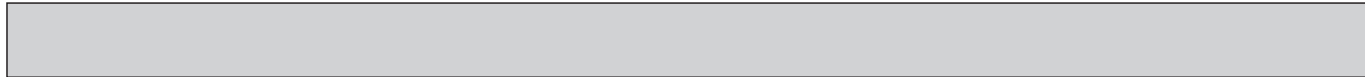
**MSZ-AP25VGK** - [E1], [EN1], [ET1], [ER1]    **MSZ-AP35VGK** - [E1], [EN1], [ET1], [ER1]  
**MSZ-AP42VGK** - [E1], [EN1], [ET1], [ER1]    **MSZ-AP50VGK** - [E1], [EN1], [ET1], [ER1]

### 1-13. INDOOR UNIT STRUCTURAL PARTS



### 1-14. ACCESSORY AND REMOTE CONTROLLER





### 1-13. INDOOR UNIT STRUCTURAL PARTS

1. The part quantity below indicates the required number of pieces per unit.

No.	Part No.	Part name	MSZ-AP25VGK - E1	MSZ-AP25VGK - EN1	MSZ-AP25VGK - ET1	MSZ-AP25VGK - ER1	MSZ-AP35VGK - E1	MSZ-AP35VGK - EN1	MSZ-AP35VGK - ET1	MSZ-AP35VGK - ER1	MSZ-AP42VGK - E1	MSZ-AP42VGK - EN1	MSZ-AP42VGK - ET1	MSZ-AP42VGK - ER1	MSZ-AP50VGK - E1	MSZ-AP50VGK - EN1	MSZ-AP50VGK - ET1	MSZ-AP50VGK - ER1	Symbol in Wiring Diagram	Remarks
1	G2W 001 026	BOX ASSEMBLY	1	1	1	1	1	1	1	1	1	1	1	1	1	1	1	1		Not including SPEC NAME PLATE
2	G2W 001 003	PANEL (FRONT) ASSEMBLY	1	1	1	1	1	1	1	1	1	1	1	1	1	1	1	1		
3	G2W 001 020	PANEL (LEFT) ASSEMBLY	1	1	1	1	1	1	1	1	1	1	1	1	1	1	1	1		Includes No. 4 and 6
4	G2W 001 120	ARM HOLDER (LEFT)	1	1	1	1	1	1	1	1	1	1	1	1	1	1	1	1		
5	G2W 001 010	FRONT PANEL	1	1	1	1	1	1	1	1	1	1	1	1	1	1	1	1		
6	G2W 001 118	CATCH	2	2	2	2	2	2	2	2	2	2	2	2	2	2	2	2		
7	G2W 001 006	PANEL (UNDER) ASSEMBLY	1	1	1	1	1	1	1	1	1	1	1	1	1	1	1	1		
8	G2W 001 023	SCREW CAP	2	2	2	2	2	2	2	2	2	2	2	2	2	2	2	2		
9	G2W 002 120	ARM HOLDER (RIGHT)	1	1	1	1	1	1	1	1	1	1	1	1	1	1	1	1		
10	G2W 001 014	PANEL (RIGHT) ASSEMBLY	1	1	1		1	1	1		1	1	1		1	1	1			Includes No. 6 and 9 Not including WIRING DIAGRAM
10	G2W 002 014	PANEL (RIGHT) ASSEMBLY				1				1				1			1			
11	G2W 001 100	AIR FILTER	2	2	2	2	2	2	2	2	2	2	2	2	2	2	2	2		1 PC/SET
12	G2W 001 115	INSTALLATION PLATE	1	1	1	1	1	1	1	1	1	1	1	1	1	1	1	1		

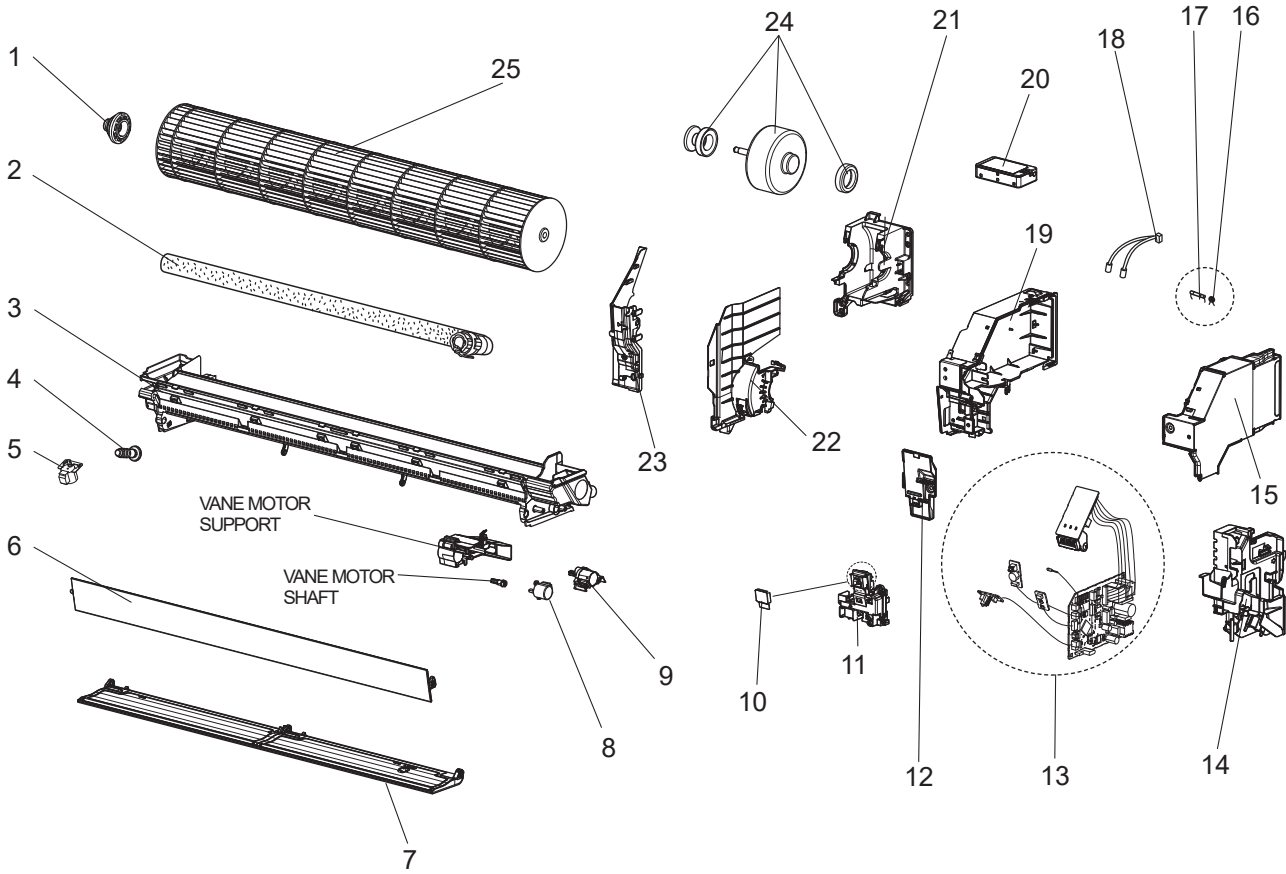
### 1-14. ACCESSORY AND REMOTE CONTROLLER

1. The part quantity below indicates the required number of pieces per unit.

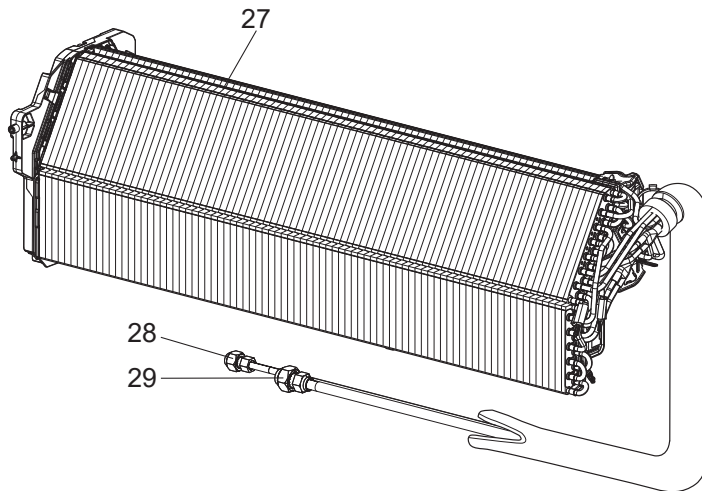
No.	Part No.	Part name	MSZ-AP25VGK - E1	MSZ-AP25VGK - EN1	MSZ-AP25VGK - ET1	MSZ-AP25VGK - ER1	MSZ-AP35VGK - E1	MSZ-AP35VGK - EN1	MSZ-AP35VGK - ET1	MSZ-AP35VGK - ER1	MSZ-AP42VGK - E1	MSZ-AP42VGK - EN1	MSZ-AP42VGK - ET1	MSZ-AP42VGK - ER1	MSZ-AP50VGK - E1	MSZ-AP50VGK - EN1	MSZ-AP50VGK - ET1	MSZ-AP50VGK - ER1	Symbol in Wiring Diagram	Remarks
13	G2W 001 400	REMOTE CONTROLLER	1	1	1		1	1	1		1	1	1		1	1	1			SG17B
13	G2W 004 400	REMOTE CONTROLLER				1				1				1				1		SG17B

MSZ-AP25VGK - [E1], [EN1], [ET1], [ER1] MSZ-AP35VGK - [E1], [EN1], [ET1], [ER1]  
 MSZ-AP42VGK - [E1], [EN1], [ET1], [ER1] MSZ-AP50VGK - [E1], [EN1], [ET1], [ER1]

**1-15. INDOOR UNIT ELECTRICAL PARTS AND FUNCTIONAL PARTS**



**1-16. INDOOR UNIT HEAT EXCHANGER**



## 1-15. INDOOR UNIT ELECTRICAL PARTS AND FUNCTIONAL PARTS

- The part quantity below indicates the required number of pieces per unit.
- The circled No. indicates that the part is not shown in the figure.

No.	Part No.	Part name	MSZ-AP25VGK - E1	MSZ-AP25VGK - EN	MSZ-AP25VGK - ET	MSZ-AP25VGK - ER	MSZ-AP35VGK - E1	MSZ-AP35VGK - EN	MSZ-AP35VGK - ET	MSZ-AP35VGK - ER	MSZ-AP42VGK - E1	MSZ-AP42VGK - EN	MSZ-AP42VGK - ET	MSZ-AP42VGK - ER	MSZ-AP50VGK - E1	MSZ-AP50VGK - EN	MSZ-AP50VGK - ET	MSZ-AP50VGK - ER	Symbol in Wiring Diagram	Remarks [Drawing No.]
1	G2W 002 520	BEARING MOUNT ASSEMBLY	1	1	1	1	1	1	1	1	1	1	1	1	1	1	1	1		Includes sleeve bearing
2	G2W 001 110	DRAIN HOSE ASSEMBLY (SHORT)	1		1	1	1	1	1	1	1	1	1	1	1	1	1	1		520 mm
2	G2W 002 110	DRAIN HOSE ASSEMBLY (LONG)		1				1				1				1				670 mm
3	G2W 001 030	NOZZLE ASSEMBLY	1	1	1	1	1	1	1	1	1	1	1	1	1	1	1	1		
4	G2W 001 708	DRAIN CAP	1	1	1	1	1	1	1	1	1	1	1	1	1	1	1	1		
5	G2W 001 320	VANE MOTOR (VERTICAL)	1	1	1	1	1	1	1	1	1	1	1	1	1	1	1	1	MV3	RIGHT & LEFT
6	G2W 001 017	HORIZONTAL VANE (UPPER) ASSEMBLY	1	1	1	1	1	1	1	1	1	1	1	1	1	1	1	1		Includes shaft
7	G2W 002 017	HORIZONTAL VANE (LOWER) ASSEMBLY	1	1	1	1	1	1	1	1	1	1	1	1	1	1	1	1		Includes shaft
8	G2W 001 315	VANE MOTOR (HORIZONTAL) (UPPER)	1	1	1	1	1	1	1	1	1	1	1	1	1	1	1	1	MV1	UP & DOWN
9	G2W 002 315	VANE MOTOR (HORIZONTAL) (LOWER)	1	1	1	1	1	1	1	1	1	1	1	1	1	1	1	1	MV2	UP & DOWN
10	—	SWITCH SHEET	1	1	1	1	1	1	1	1	1	1	1	1	1	1	1	1		[ DY79D318H01 ]
11	—	DISPLAY AND RECEIVER P.C. BOARD HOLDER ASSEMBLY	1	1	1	1	1	1	1	1	1	1	1	1	1	1	1	1		[ DY25A812G02 ]
12	—	V.A. CLAMP ASSEMBLY	1	1	1	1	1	1	1	1	1	1	1	1	1	1	1	1		[ DK00G212G01 ]
13	G2W 004 410	ELECTRONIC CONTROL P.C. BOARD	1	1	1	1														Includes RECEIVER P.C. BOARD, DISPLAY P.C. BOARD, SWITCH/BUZZER P.C. BOARD, TERMINAL P.C. BOARD and ROOM TEMPERATURE THERMISTOR (RT11)
13	G2W 003 410	ELECTRONIC CONTROL P.C. BOARD					1	1	1	1										
13	G2W 002 410	ELECTRONIC CONTROL P.C. BOARD									1	1	1	1						
13	G2W 001 410	ELECTRONIC CONTROL P.C. BOARD													1	1	1	1		
14	—	CABLE GUIDE	1	1	1	1	1	1	1	1	1	1	1	1	1	1	1	1		[ DY25A811G02 ]
15	—	PB-COVER (RIGHT)	1	1	1	1	1	1	1	1	1	1	1	1	1	1	1	1		[ DK00G213G01 ]
16	G2W 001 425	VARIATOR	1	1	1	1	1	1	1	1	1	1	1	1	1	1	1	1	NR11	
17	G2W 001 422	FUSE	1	1	1	1	1	1	1	1	1	1	1	1	1	1	1	1	F11	T3.15AL250V
18	G2W 002 310	INDOOR COIL THERMISTOR									1	1	1	1	1	1	1	1	RT12	
18	G2W 001 310	INDOOR COIL THERMISTOR	1	1	1	1	1	1	1	1									RT13	
19	—	PB-COVER (LEFT)	1	1	1	1	1	1	1	1	1	1	1	1	1	1	1	1		[ DK00G223G03 ]
20	G2W 001 405	Wi-Fi INTERFACE MAC-566IFB-E	1	1	1	1	1	1	1	1	1	1	1	1	1	1	1	1		MAC-566IFB-E
21	—	MOTOR BED	1	1	1	1	1	1	1	1	1	1	1	1	1	1	1	1		[ SQ00C989G04 ]
22	G2W 001 103	MOTOR BAND	1	1	1	1	1	1	1	1	1	1	1	1	1	1	1	1		
23	—	WATER COVER	1	1	1	1	1	1	1	1	1	1	1	1	1	1	1	1		[ SQ25Y723G02 ]
24	G2W 001 300	INDOOR FAN MOTOR	1	1	1	1	1	1	1	1	1	1	1	1	1	1	1	1	MF	RC0J30-□□ Includes FAN MOTOR RUBBER MOUNT (2 PCS/SET)
25	G2W 001 500	LINE FLOW FAN	1	1	1	1	1	1	1	1	1	1	1	1	1	1	1	1		
②6	—	LEAD WIRE	1	1	1	1	1	1	1	1	1	1	1	1	1	1	1	1		[ SM00C948G02 ] Between CN151 on ELECTRONIC CONTROL P.C. BOARD and VANE MOTOR

## 1-16. INDOOR UNIT HEAT EXCHANGER

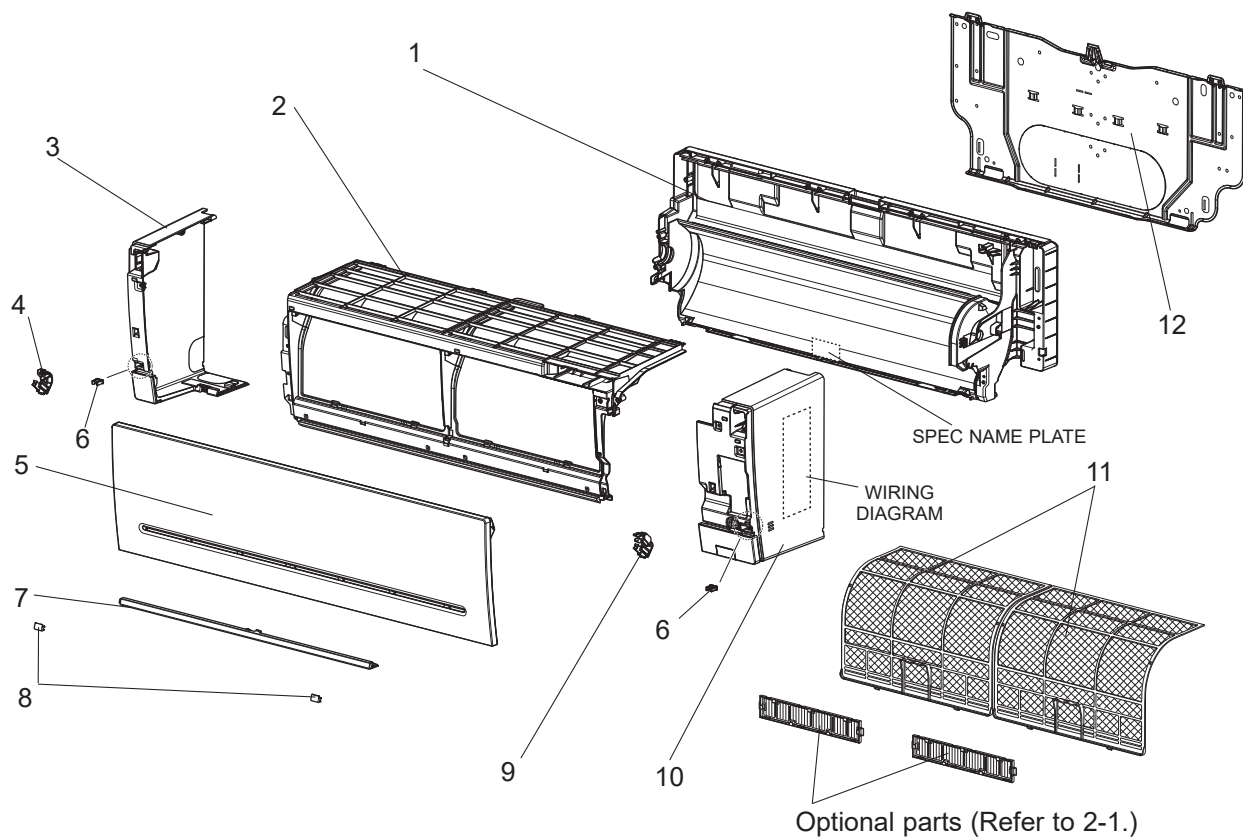
- The part quantity below indicates the required number of pieces per unit.

No.	Part No.	Part name	MSZ-AP25VGK - E1	MSZ-AP25VGK - EN	MSZ-AP25VGK - ET	MSZ-AP25VGK - ER	MSZ-AP35VGK - E1	MSZ-AP35VGK - EN	MSZ-AP35VGK - ET	MSZ-AP35VGK - ER	MSZ-AP42VGK - E1	MSZ-AP42VGK - EN	MSZ-AP42VGK - ET	MSZ-AP42VGK - ER	MSZ-AP50VGK - E1	MSZ-AP50VGK - EN	MSZ-AP50VGK - ET	MSZ-AP50VGK - ER	Symbol in Wiring Diagram	Remarks
27	G2W 001 600	INDOOR HEAT EXCHANGER	1		1	1	1		1	1										Includes No. 28 and 29
27	G2W 002 600										1		1	1						Includes No. 28 and 29
27	G2W 003 600			1				1												Includes No. 28 and 29
27	G2W 004 600											1				1				Includes No. 28 and 29
28	G2W 001 605	UNION (LIQUID)	1	1	1	1	1	1	1	1	1	1	1	1	1	1	1	1		ø6.35
29	G2W 002 605	UNION (GAS)	1	1	1	1	1	1	1	1	1	1	1	1	1	1	1	1		ø9.52

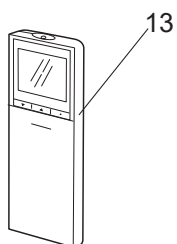
MSZ-AP25VGK - [E2], [EN2], [ET2], [ER2] MSZ-AP35VGK - [E2], [EN2], [ET2], [ER2]

MSZ-AP42VGK - [E2], [EN2], [ET2], [ER2] MSZ-AP50VGK - [E2], [EN2], [ET2], [ER2]

### 1-17. INDOOR UNIT STRUCTURAL PARTS



### 1-18. ACCESSORY AND REMOTE CONTROLLER





### 1-17. INDOOR UNIT STRUCTURAL PARTS

1. The part quantity below indicates the required number of pieces per unit.

No.	Part No.	Part name	MSZ-AP25VGK - E2	MSZ-AP25VGK - EN2	MSZ-AP25VGK - ET2	MSZ-AP25VGK - ER2	MSZ-AP35VGK - E2	MSZ-AP35VGK - EN2	MSZ-AP35VGK - ET2	MSZ-AP35VGK - ER2	MSZ-AP42VGK - E2	MSZ-AP42VGK - EN2	MSZ-AP42VGK - ET2	MSZ-AP42VGK - ER2	MSZ-AP50VGK - E2	MSZ-AP50VGK - EN2	MSZ-AP50VGK - ET2	MSZ-AP50VGK - ER2	Symbol in Wiring Diagram	Remarks
1	G2W 001 026	BOX ASSEMBLY	1	1	1	1	1	1	1	1	1	1	1	1	1	1	1	1		Not including SPEC NAME PLATE
2	G2W 001 003	PANEL (FRONT) ASSEMBLY	1	1	1	1	1	1	1	1	1	1	1	1	1	1	1	1		
3	G2W 001 020	PANEL (LEFT) ASSEMBLY	1	1	1	1	1	1	1	1	1	1	1	1	1	1	1	1		Includes No. 4 and 6
4	G2W 001 120	ARM HOLDER (LEFT)	1	1	1	1	1	1	1	1	1	1	1	1	1	1	1	1		
5	G2W 001 010	FRONT PANEL	1	1	1	1	1	1	1	1	1	1	1	1	1	1	1	1		
6	G2W 001 118	CATCH	2	2	2	2	2	2	2	2	2	2	2	2	2	2	2	2		
7	G2W 001 006	PANEL (UNDER) ASSEMBLY	1	1	1	1	1	1	1	1	1	1	1	1	1	1	1	1		
8	G2W 001 023	SCREW CAP	2	2	2	2	2	2	2	2	2	2	2	2	2	2	2	2		
9	G2W 002 120	ARM HOLDER (RIGHT)	1	1	1	1	1	1	1	1	1	1	1	1	1	1	1	1		
10	G2W 001 014	PANEL (RIGHT) ASSEMBLY	1	1	1		1	1	1		1	1	1		1	1	1		Includes No. 6 and 9 Not including WIRING DIAGRAM	
10	G2W 002 014	PANEL (RIGHT) ASSEMBLY				1			1				1				1			
11	G2W 001 100	AIR FILTER	2	2	2	2	2	2	2	2	2	2	2	2	2	2	2	2		1 PC/SET
12	G2W 001 115	INSTALLATION PLATE	1	1	1	1	1	1	1	1	1	1	1	1	1	1	1	1		

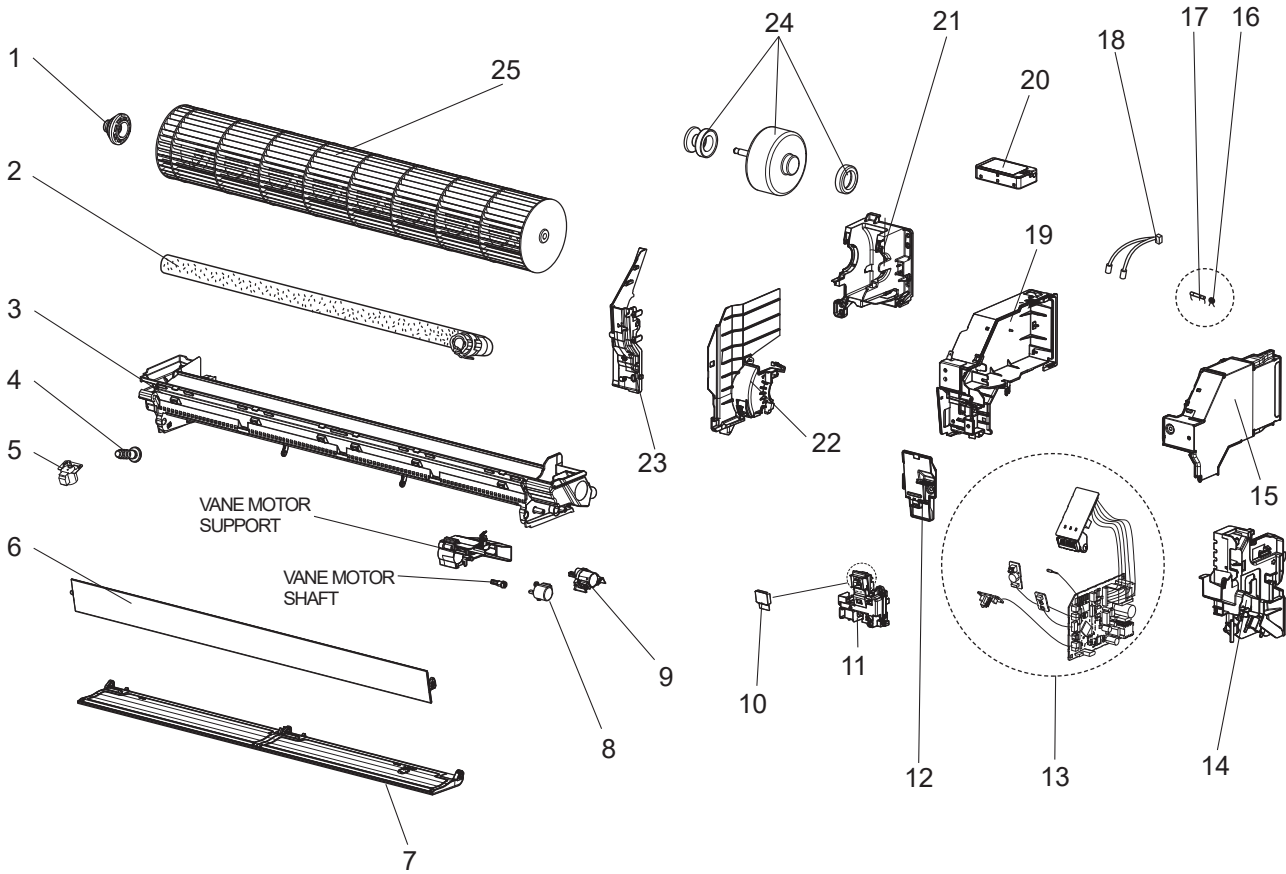
### 1-18. ACCESSORY AND REMOTE CONTROLLER

1. The part quantity below indicates the required number of pieces per unit.

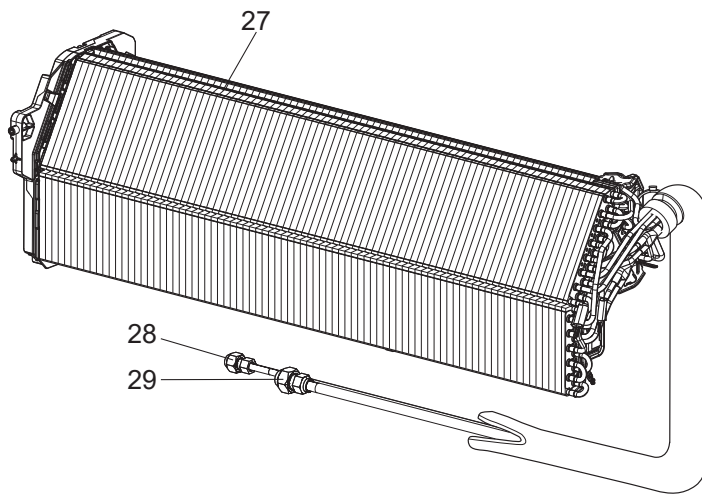
No.	Part No.	Part name	MSZ-AP25VGK - E2	MSZ-AP25VGK - EN2	MSZ-AP25VGK - ET2	MSZ-AP25VGK - ER2	MSZ-AP35VGK - E2	MSZ-AP35VGK - EN2	MSZ-AP35VGK - ET2	MSZ-AP35VGK - ER2	MSZ-AP42VGK - E2	MSZ-AP42VGK - EN2	MSZ-AP42VGK - ET2	MSZ-AP42VGK - ER2	MSZ-AP50VGK - E2	MSZ-AP50VGK - EN2	MSZ-AP50VGK - ET2	MSZ-AP50VGK - ER2	Symbol in Wiring Diagram	Remarks
13	G2W 005 400	REMOTE CONTROLLER	1	1	1		1	1	1		1	1	1		1	1	1		SH20A	
13	G2W 006 400	REMOTE CONTROLLER				1				1				1				1	SH20A	

MSZ-AP25VGK - [E2], [EN2], [ET2], [ER2] MSZ-AP35VGK - [E2], [EN2], [ET2], [ER2]  
 MSZ-AP42VGK - [E2], [EN2], [ET2], [ER2] MSZ-AP50VGK - [E2], [EN2], [ET2], [ER2]

**1-19. INDOOR UNIT ELECTRICAL PARTS AND FUNCTIONAL PARTS**



**1-20. INDOOR UNIT HEAT EXCHANGER**



## 1-19. INDOOR UNIT ELECTRICAL PARTS AND FUNCTIONAL PARTS

- The part quantity below indicates the required number of pieces per unit.
- The circled No. indicates that the part is not shown in the figure.

No.	Part No.	Part name	MSZ-AP25VGK - E2	MSZ-AP25VGK - EN2	MSZ-AP25VGK - ET2	MSZ-AP25VGK - ER2	MSZ-AP35VGK - E2	MSZ-AP35VGK - EN2	MSZ-AP35VGK - ET2	MSZ-AP35VGK - ER2	MSZ-AP42VGK - E2	MSZ-AP42VGK - EN2	MSZ-AP42VGK - ET2	MSZ-AP42VGK - ER2	MSZ-AP50VGK - E2	MSZ-AP50VGK - EN2	MSZ-AP50VGK - ET2	MSZ-AP50VGK - ER2	Symbol in Wiring Diagram	Remarks [Drawing No.]
1	G2W 001 520	BEARING MOUNT ASSEMBLY	1	1	1	1	1	1	1	1	1	1	1	1	1	1	1	1		Includes sleeve bearing
2	G2W 001 110	DRAIN HOSE ASSEMBLY (SHORT)	1		1	1	1		1	1	1		1	1	1		1	1		520 mm
2	G2W 002 110	DRAIN HOSE ASSEMBLY (LONG)		1				1			1				1					670 mm
3	G2W 001 030	NOZZLE ASSEMBLY	1	1	1	1	1	1	1	1	1	1	1	1	1	1	1	1		
4	G2W 001 708	DRAIN CAP	1	1	1	1	1	1	1	1	1	1	1	1	1	1	1	1		
5	G2W 001 320	VANE MOTOR (VERTICAL)	1	1	1	1	1	1	1	1	1	1	1	1	1	1	1	1	MV3	RIGHT & LEFT
6	G2W 001 017	HORIZONTAL VANE (UPPER) ASSEMBLY	1	1	1	1	1	1	1	1	1	1	1	1	1	1	1	1		Includes shaft
7	G2W 002 017	HORIZONTAL VANE (LOWER) ASSEMBLY	1	1	1	1	1	1	1	1	1	1	1	1	1	1	1	1		Includes shaft
8	G2W 001 315	VANE MOTOR (HORIZONTAL) (UPPER)	1	1	1	1	1	1	1	1	1	1	1	1	1	1	1	1	MV1	UP & DOWN
9	G2W 002 315	VANE MOTOR (HORIZONTAL) (LOWER)	1	1	1	1	1	1	1	1	1	1	1	1	1	1	1	1	MV2	UP & DOWN
10	—	SWITCH SHEET	1	1	1	1	1	1	1	1	1	1	1	1	1	1	1	1		[ DY79D306H01 ]
11	—	DISPLAY AND RECEIVER P.C. BOARD HOLDER ASSEMBLY	1	1	1	1	1	1	1	1	1	1	1	1	1	1	1	1		[ DY25A812G02 ]
12	—	V.A. CLAMP ASSEMBLY	1	1	1	1	1	1	1	1	1	1	1	1	1	1	1	1		[ DK00G212G01 ]
13	G2W 009 410	ELECTRONIC CONTROL P.C. BOARD	1	1	1	1														Includes RECEIVER P.C. BOARD, DISPLAY P.C. BOARD, SWITCH/BUZZER P.C. BOARD, TERMINAL P.C. BOARD and ROOM TEMPERATURE THERMISTOR (RT11)
13	G2W 010 410	ELECTRONIC CONTROL P.C. BOARD					1	1	1	1										
13	G2W 011 410	ELECTRONIC CONTROL P.C. BOARD									1	1	1	1						
13	G2W 012 410	ELECTRONIC CONTROL P.C. BOARD													1	1	1	1		
14	—	CABLE GUIDE	1	1	1	1	1	1	1	1	1	1	1	1	1	1	1	1		[ DY25A811G02 ]
15	—	PB-COVER (RIGHT)	1	1	1	1	1	1	1	1	1	1	1	1	1	1	1	1		[ DK00G213G02 ]
16	G2W 001 425	VARISTOR	1	1	1	1	1	1	1	1	1	1	1	1	1	1	1	1	NR11	
17	G2W 001 422	FUSE	1	1	1	1	1	1	1	1	1	1	1	1	1	1	1	1	F11	T3.15AL250V
18	G2W 002 310	INDOOR COIL THERMISTOR											1	1	1	1	1	1	RT12	
	G2W 001 310	INDOOR COIL THERMISTOR	1	1	1	1	1	1	1	1	1	1	1	1	1	1	1	1	RT13	
19	—	PB-COVER (LEFT)	1	1	1	1	1	1	1	1	1	1	1	1	1	1	1	1		[ DK00G223G03 ]
20	G2W 002 405	Wi-Fi INTERFACE MAC-577IF2-E	1	1	1		1	1	1		1	1	1		1	1	1			MAC-577IF2-E
20	G2W 003 405	Wi-Fi INTERFACE MAC-577IF2-E				1				1				1				1		MAC-577IF2-E
21	—	MOTOR BED	1	1	1	1	1	1	1	1	1	1	1	1	1	1	1	1		[ SQ00C989G05 ]
22	G2W 001 103	MOTOR BAND	1	1	1	1	1	1	1	1	1	1	1	1	1	1	1	1		
23	—	WATER COVER	1	1	1	1	1	1	1	1	1	1	1	1	1	1	1	1		[ SQ25Y723G02 ]
24	G2W 001 300	INDOOR FAN MOTOR	1	1	1	1	1	1	1	1	1	1	1	1	1	1	1	1	MF	RC0J30-□□ Includes FAN MOTOR RUBBER MOUNT (2 PCS/SET)
25	G2W 001 500	LINE FLOW FAN	1	1	1	1	1	1	1	1	1	1	1	1	1	1	1	1		
(26)	—	LEAD WIRE	1	1	1	1	1	1	1	1	1	1	1	1	1	1	1	1		[ SM00C948G02 ] Between CN151 on ELECTRONIC CONTROL P.C. BOARD and VANE MOTOR

## 1-20. INDOOR UNIT HEAT EXCHANGER

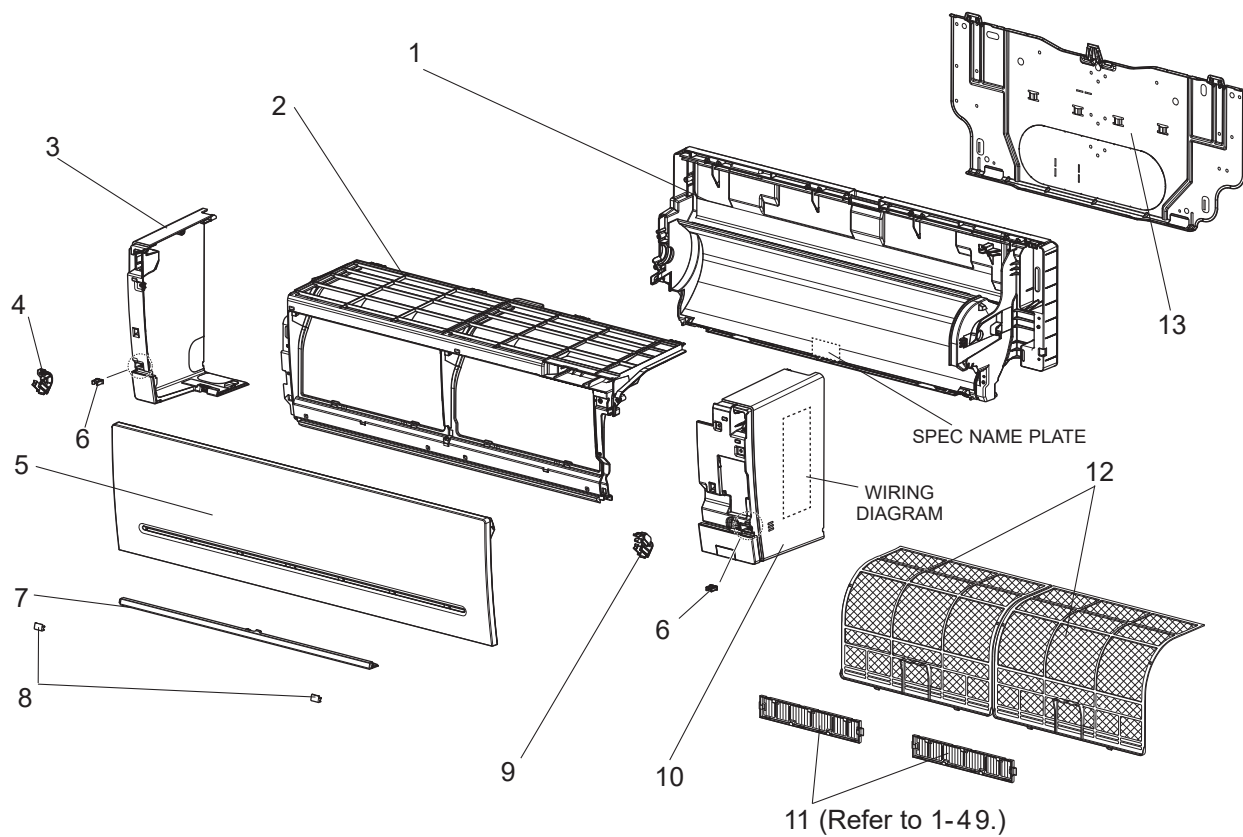
- The part quantity below indicates the required number of pieces per unit.

No.	Part No.	Part name	MSZ-AP25VGK - E2	MSZ-AP25VGK - EN2	MSZ-AP25VGK - ET2	MSZ-AP25VGK - ER2	MSZ-AP35VGK - E2	MSZ-AP35VGK - EN2	MSZ-AP35VGK - ET2	MSZ-AP35VGK - ER2	MSZ-AP42VGK - E2	MSZ-AP42VGK - EN2	MSZ-AP42VGK - ET2	MSZ-AP42VGK - ER2	MSZ-AP50VGK - E2	MSZ-AP50VGK - EN2	MSZ-AP50VGK - ET2	MSZ-AP50VGK - ER2	Symbol in Wiring Diagram	Remarks
27	G2W 001 600	INDOOR HEAT EXCHANGER	1		1	1	1		1	1										Includes No. 28 and 29
27	G2W 002 600	INDOOR HEAT EXCHANGER									1		1	1	1		1	1		Includes No. 28 and 29
27	G2W 003 600	INDOOR HEAT EXCHANGER		1				1												Includes No. 28 and 29
27	G2W 004 600	INDOOR HEAT EXCHANGER									1				1					Includes No. 28 and 29
28	G2W 001 605	UNION (LIQUID)	1	1	1	1	1	1	1	1	1	1	1	1	1	1	1	1		ø6.35
29	G2W 002 605	UNION (GAS)	1	1	1	1	1	1	1	1	1	1	1	1	1	1	1	1		ø9.52

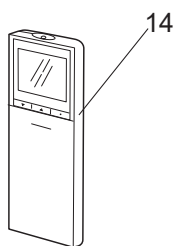
MSZ-AP25VGK - E3, EN3, ET3, ER3 MSZ-AP35VGK - E3, EN3, ET3, ER3

MSZ-AP42VGK - E3, EN3, ET3, ER3 MSZ-AP50VGK - E3, EN3, ET3, ER3

### 1-21. INDOOR UNIT STRUCTURAL PARTS



### 1-22. ACCESSORY AND REMOTE CONTROLLER



## 1-21. INDOOR UNIT STRUCTURAL PARTS

1. The part quantity below indicates the required number of pieces per unit.

No.	Part No.	Part name	MSZ-AP25VGK - E3	MSZ-AP25VGK - EN3	MSZ-AP25VGK - ET3	MSZ-AP25VGK - ER3	MSZ-AP35VGK - E3	MSZ-AP35VGK - EN3	MSZ-AP35VGK - ET3	MSZ-AP35VGK - ER3	MSZ-AP42VGK - E3	MSZ-AP42VGK - EN3	MSZ-AP42VGK - ET3	MSZ-AP42VGK - ER3	MSZ-AP50VGK - E3	MSZ-AP50VGK - EN3	MSZ-AP50VGK - ET3	MSZ-AP50VGK - ER3	Symbol in Wiring Diagram	Remarks
1	G2W 001 026	BOX ASSEMBLY	1	1	1	1	1	1	1	1	1	1	1	1	1	1	1	1		Not including SPEC NAME PLATE
2	G2W 001 003	PANEL (FRONT) ASSEMBLY	1	1	1	1	1	1	1	1	1	1	1	1	1	1	1	1		
3	G2W 001 020	PANEL (LEFT) ASSEMBLY	1	1	1	1	1	1	1	1	1	1	1	1	1	1	1	1		Includes No. 4 and 6
4	G2W 001 120	ARM HOLDER (LEFT)	1	1	1	1	1	1	1	1	1	1	1	1	1	1	1	1		
5	G2W 001 010	FRONT PANEL	1	1	1	1	1	1	1	1	1	1	1	1	1	1	1	1		
6	G2W 001 118	CATCH	2	2	2	2	2	2	2	2	2	2	2	2	2	2	2	2		
7	G2W 001 006	PANEL (UNDER) ASSEMBLY	1	1	1	1	1	1	1	1	1	1	1	1	1	1	1	1		
8	G2W 001 023	SCREW CAP	2	2	2	2	2	2	2	2	2	2	2	2	2	2	2	2		
9	G2W 002 120	ARM HOLDER (RIGHT)	1	1	1	1	1	1	1	1	1	1	1	1	1	1	1	1		
10	G2W 001 014	PANEL (RIGHT) ASSEMBLY	1	1	1		1	1	1		1	1	1		1	1	1		Includes No. 6 and 9 Not including WIRING DIAGRAM	
10	G2W 002 014	PANEL (RIGHT) ASSEMBLY				1			1				1				1		Includes No. 6 and 9 Not including WIRING DIAGRAM	
11	—	AIR CLEANING FILTER (V BLOCKING FILTER)	2	2	2	2	2	2	2	2	2	2	2	2	2	2	2	2		2 PCS/SET MAC-2470FT-E
12	G2W 001 100	AIR FILTER	2	2	2	2	2	2	2	2	2	2	2	2	2	2	2	2		1 PC/SET
13	G2W 001 115	INSTALLATION PLATE	1	1	1	1	1	1	1	1	1	1	1	1	1	1	1	1		

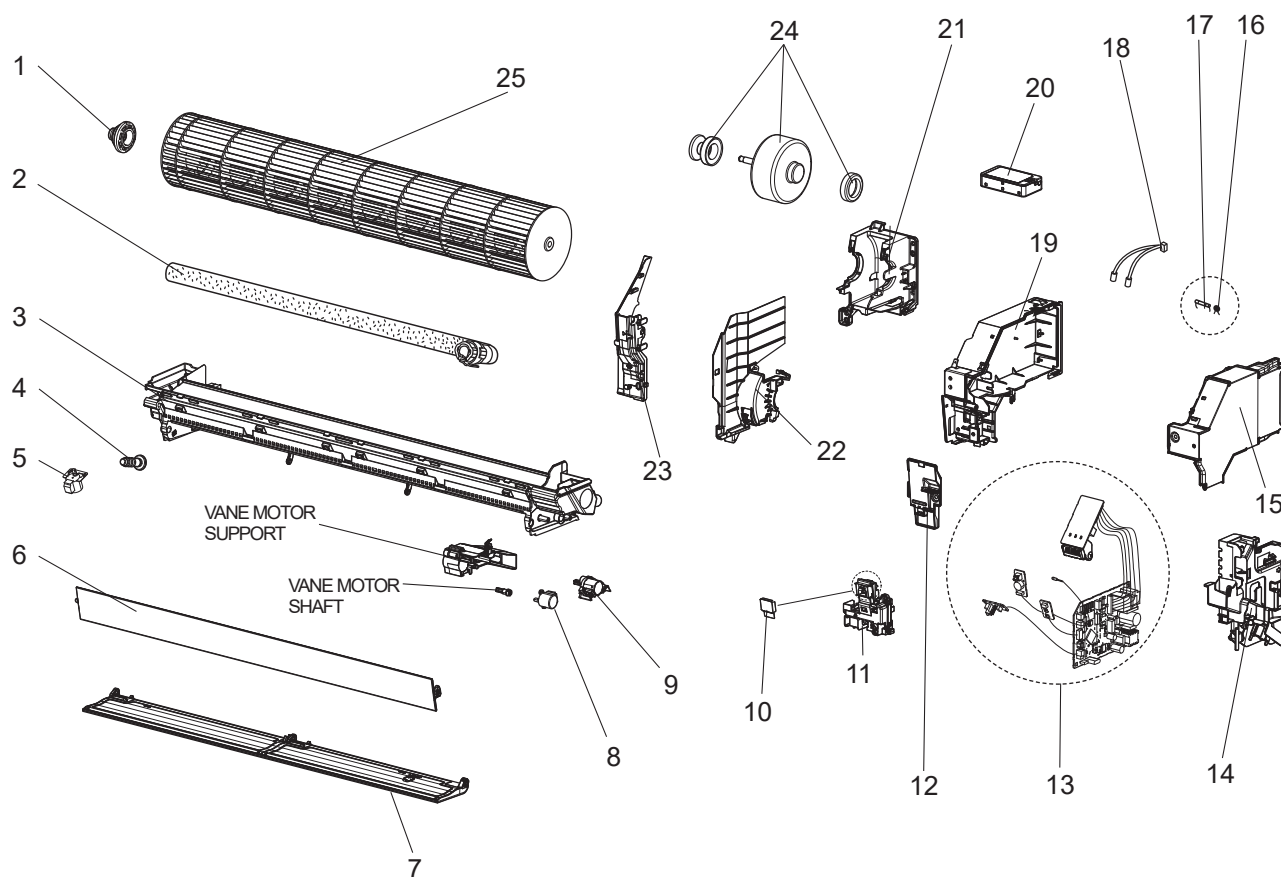
## 1-22. ACCESSORY AND REMOTE CONTROLLER

1. The part quantity below indicates the required number of pieces per unit.

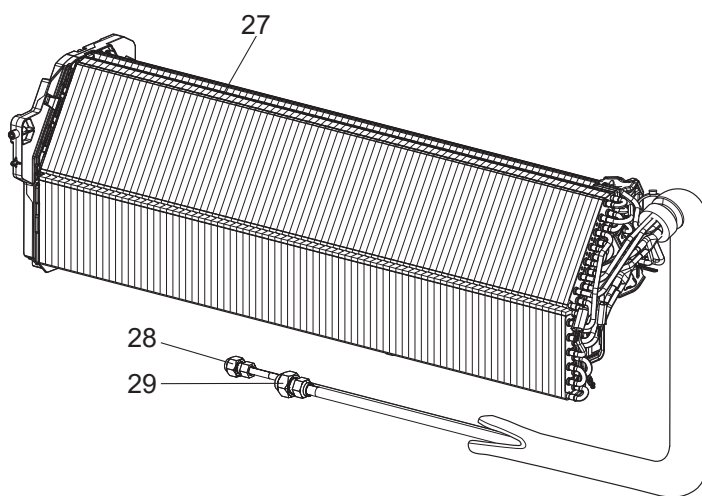
No.	Part No.	Part name	MSZ-AP25VGK - E3	MSZ-AP25VGK - EN3	MSZ-AP25VGK - ET3	MSZ-AP25VGK - ER3	MSZ-AP35VGK - E3	MSZ-AP35VGK - EN3	MSZ-AP35VGK - ET3	MSZ-AP35VGK - ER3	MSZ-AP42VGK - E3	MSZ-AP42VGK - EN3	MSZ-AP42VGK - ET3	MSZ-AP42VGK - ER3	MSZ-AP50VGK - E3	MSZ-AP50VGK - EN3	MSZ-AP50VGK - ET3	MSZ-AP50VGK - ER3	Symbol in Wiring Diagram	Remarks
14	G2W 005 400	REMOTE CONTROLLER	1	1	1		1	1	1		1	1	1		1	1	1		SH20A	
14	G2W 006 400	REMOTE CONTROLLER				1					1				1			1		SH20A

MSZ-AP25VGK - [E3], [EN3], [ET3], [ER3] MSZ-AP35VGK - [E3], [EN3], [ET3], [ER3]  
 MSZ-AP42VGK - [E3], [EN3], [ET3], [ER3] MSZ-AP50VGK - [E3], [EN3], [ET3], [ER3]

### 1-23. INDOOR UNIT ELECTRICAL PARTS AND FUNCTIONAL PARTS



### 1-24. INDOOR UNIT HEAT EXCHANGER



## 1-23. INDOOR UNIT ELECTRICAL PARTS AND FUNCTIONAL PARTS

1. The part quantity below indicates the required number of pieces per unit.
2. The circled No. indicates that the part is not shown in the figure.

No.	Part No.	Part name	MSZ-AP25VGK - E3	MSZ-AP25VGK - EN3	MSZ-AP25VGK - ET3	MSZ-AP25VGK - ER3	MSZ-AP35VGK - E3	MSZ-AP35VGK - EN3	MSZ-AP35VGK - ET3	MSZ-AP35VGK - ER3	MSZ-AP42VGK - E3	MSZ-AP42VGK - EN3	MSZ-AP42VGK - ET3	MSZ-AP42VGK - ER3	MSZ-AP50VGK - E3	MSZ-AP50VGK - EN3	MSZ-AP50VGK - ET3	MSZ-AP50VGK - ER3	Symbol in Wiring Diagram	Remarks [Drawing No.]	
1	G2W 001 520	BEARING MOUNT ASSEMBLY	1	1	1	1	1	1	1	1	1	1	1	1	1	1	1	1			Includes sleeve bearing
2	G2W 001 110	DRAIN HOSE ASSEMBLY (SHORT)	1		1	1	1		1	1	1		1	1	1		1	1			520 mm
2	G2W 002 110	DRAIN HOSE ASSEMBLY (LONG)		1				1			1					1					670 mm
3	G2W 001 030	NOZZLE ASSEMBLY	1	1	1	1	1	1	1	1	1	1	1	1	1	1	1	1			
4	G2W 001 708	DRAIN CAP	1	1	1	1	1	1	1	1	1	1	1	1	1	1	1	1			
5	G2W 001 320	VANE MOTOR (VERTICAL)	1	1	1	1	1	1	1	1	1	1	1	1	1	1	1	1		MV3	RIGHT & LEFT
6	G2W 001 017	HORIZONTAL VANE (UPPER) ASSEMBLY	1	1	1	1	1	1	1	1	1	1	1	1	1	1	1	1			Includes shaft
7	G2W 002 017	HORIZONTAL VANE (LOWER) ASSEMBLY	1	1	1	1	1	1	1	1	1	1	1	1	1	1	1	1			Includes shaft
8	G2W 001 315	VANE MOTOR (HORIZONTAL) (UPPER)	1	1	1	1	1	1	1	1	1	1	1	1	1	1	1	1		MV1	UP & DOWN
9	G2W 002 315	VANE MOTOR (HORIZONTAL) (LOWER)	1	1	1	1	1	1	1	1	1	1	1	1	1	1	1	1		MV2	UP & DOWN
10	—	SWITCH SHEET	1	1	1	1	1	1	1	1	1	1	1	1	1	1	1	1			[ DY79D306H01 ]
11	—	DISPLAY AND RECEIVER P.C. BOARD HOLDER ASSEMBLY	1	1	1	1	1	1	1	1	1	1	1	1	1	1	1	1			[ DY25A812G02 ]
12	—	V.A. CLAMP ASSEMBLY	1	1	1	1	1	1	1	1	1	1	1	1	1	1	1	1			[ DK00G212G01 ]
13	G2W 009 410	ELECTRONIC CONTROL P.C. BOARD	1	1	1	1															Includes RECEIVER P.C. BOARD, DISPLAY P.C. BOARD, SWITCH/BUZZER P.C. BOARD, TERMINAL P.C. BOARD and ROOM TEMPERATURE THERMISTOR (RT11)
13	G2W 010 410	ELECTRONIC CONTROL P.C. BOARD					1	1	1	1											
13	G2W 011 410	ELECTRONIC CONTROL P.C. BOARD									1	1	1	1							
13	G2W 012 410	ELECTRONIC CONTROL P.C. BOARD													1	1	1	1			
14	—	CABLE GUIDE	1	1	1	1	1	1	1	1	1	1	1	1	1	1	1	1			[ DY25A811G02 ]
15	—	PB-COVER (RIGHT)	1	1	1	1	1	1	1	1	1	1	1	1	1	1	1	1			[ DK00G213G02 ]
16	G2W 001 425	VARISTOR	1	1	1	1	1	1	1	1	1	1	1	1	1	1	1	1		NR11	
17	G2W 001 422	FUSE	1	1	1	1	1	1	1	1	1	1	1	1	1	1	1	1		F11	T3.15AL250V
18	G2W 002 310	INDOOR COIL THERMISTOR																			
18	G2W 001 310	INDOOR COIL THERMISTOR	1	1	1	1	1	1	1	1	1	1	1	1	1	1	1	1		RT12 RT13	
19	—	PB-COVER (LEFT)	1	1	1	1	1	1	1	1	1	1	1	1	1	1	1	1			[ DK00G223G03 ]
20	G2W 002 405	Wi-Fi INTERFACE MAC-577IF2-E	1	1	1		1	1	1		1	1	1		1	1	1			MAC-577IF2-E	
20	G2W 003 405	Wi-Fi INTERFACE MAC-577IF2-E				1				1				1				1			MAC-577IF2-E
21	—	MOTOR BED	1	1	1	1	1	1	1	1	1	1	1	1	1	1	1	1			[ SQ00C989G05 ]
22	G2W 001 103	MOTOR BAND	1	1	1	1	1	1	1	1	1	1	1	1	1	1	1	1			
23	—	WATER COVER	1	1	1	1	1	1	1	1	1	1	1	1	1	1	1	1			[ SQ25Y723G02 ]
24	G2W 001 300	INDOOR FAN MOTOR	1	1	1	1	1	1	1	1	1	1	1	1	1	1	1	1		MF	RC0J30-□□ Includes FAN MOTOR RUBBER MOUNT (2 PCS/SET)
25	G2W 001 500	LINE FLOW FAN	1	1	1	1	1	1	1	1	1	1	1	1	1	1	1	1			
(26)	—	LEAD WIRE	1	1	1	1	1	1	1	1	1	1	1	1	1	1	1	1			[ SM00C948G02 ] Between CN151 on ELECTRONIC CONTROL P.C. BOARD and VANE MOTOR

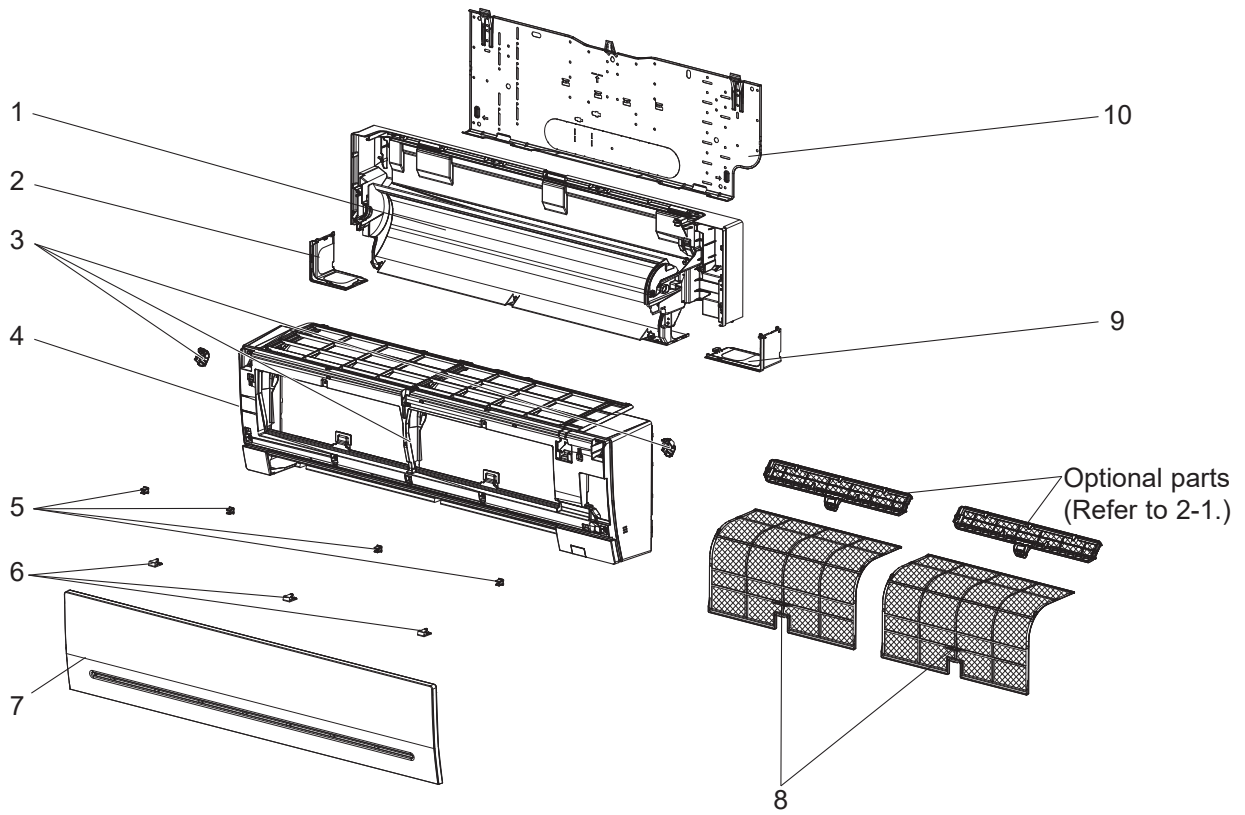
## 1-24. INDOOR UNIT HEAT EXCHANGER

1. The part quantity below indicates the required number of pieces per unit.

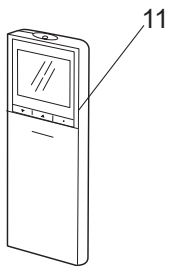
No.	Part No.	Part name	MSZ-AP25VGK - E3	MSZ-AP25VGK - EN3	MSZ-AP25VGK - ET3	MSZ-AP25VGK - ER3	MSZ-AP35VGK - E3	MSZ-AP35VGK - EN3	MSZ-AP35VGK - ET3	MSZ-AP35VGK - ER3	MSZ-AP42VGK - E3	MSZ-AP42VGK - EN3	MSZ-AP42VGK - ET3	MSZ-AP42VGK - ER3	MSZ-AP50VGK - E3	MSZ-AP50VGK - EN3	MSZ-AP50VGK - ET3	MSZ-AP50VGK - ER3	Symbol in Wiring Diagram	Remarks	
27	G2W 001 600	INDOOR HEAT EXCHANGER	1		1	1	1		1	1											Includes No. 28 and 29
27	G2W 002 600	INDOOR HEAT EXCHANGER									1		1	1	1		1	1			Includes No. 28 and 29
27	G2W 003 600	INDOOR HEAT EXCHANGER		1				1													Includes No. 28 and 29
27	G2W 004 600	INDOOR HEAT EXCHANGER									1				1						Includes No. 28 and 29
28	G2W 001 605	UNION (LIQUID)	1	1	1	1	1	1	1	1	1	1	1	1	1	1	1	1			ø6.35
29	G2W 002 605	UNION (GAS)	1	1	1	1	1	1	1	1	1	1	1	1	1	1	1	1			ø9.52



**MSZ-AP60VG - [E1], [ET1], [ER1], [E2], [ET2] MSZ-AP71VG - [E1], [ET1], [ER1], [E2], [ET2]**  
**1-25. INDOOR UNIT STRUCTURAL PARTS**



**1-26. ACCESSORY AND REMOTE CONTROLLER**



## 1-25. INDOOR UNIT STRUCTURAL PARTS

1. The part quantity below indicates the required number of pieces per unit.

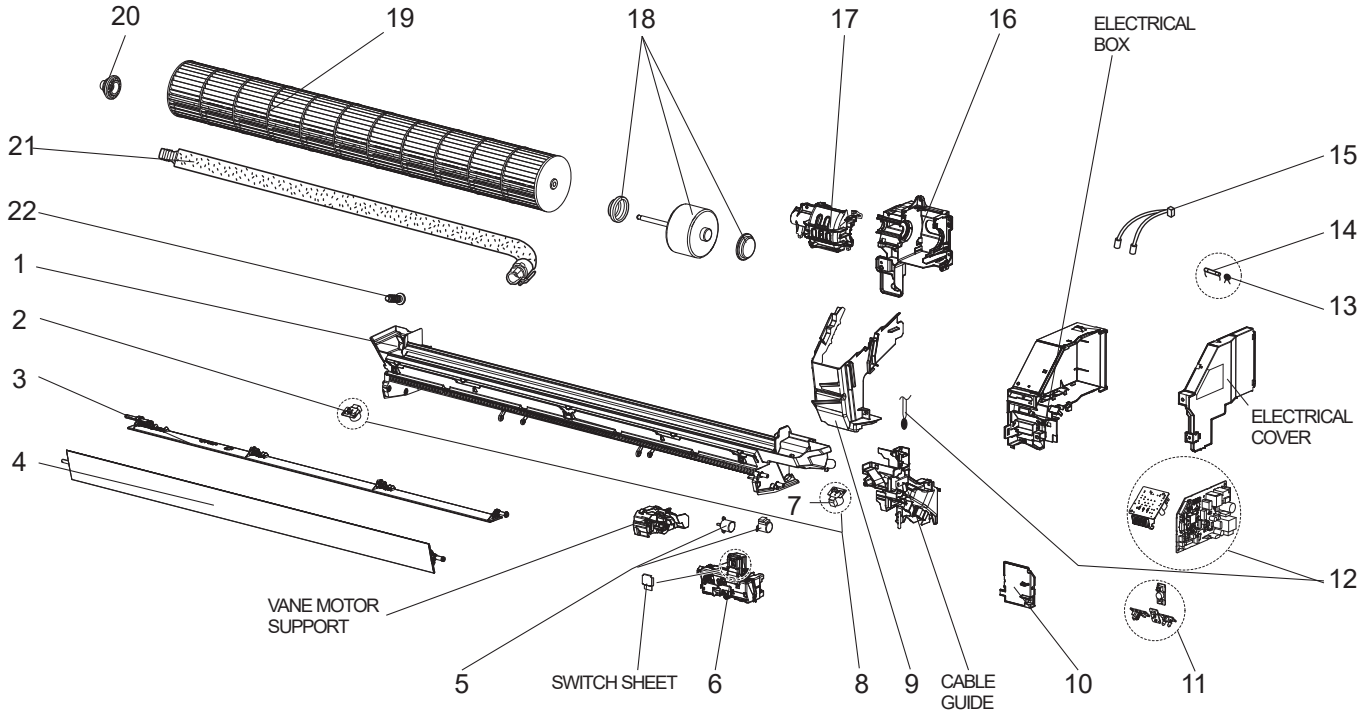
No.	Part No.	Part name	MSZ-AP60VG - E1	MSZ-AP60VG - ET1	MSZ-AP60VG - ER1	MSZ-AP60VG - E2	MSZ-AP60VG - ET2	MSZ-AP71VG - E1	MSZ-AP71VG - ET1	MSZ-AP71VG - ER1	MSZ-AP71VG - E2	MSZ-AP71VG - ET2	Symbol in Wiring Diagram	Remarks
1	E22 61H 234	BOX ASSEMBLY	1	1	1	1	1	1	1	1	1	1		
2	E22 41G 976	CORNER BOX (LEFT)	1	1	1	1	1	1	1	1	1	1		
3	E22 61H 000	PANEL ASSEMBLY	1			1		1			1			Includes No. 4, 5, 6 and 7
3	E22 63H 000	PANEL ASSEMBLY		1			1		1			1		Includes No. 4, 5, 6 and 7
3	E22 65H 000	PANEL ASSEMBLY			1					1				Includes No. 4, 5, 6 and 7
4	E22 62H 000	PANEL ASSEMBLY (F)	1	1	1	1	1	1	1	1	1	1		
5	E22 408 142	CATCH	4	4	4	4	4	4	4	4	4	4		4 PCS/SET
6	E22 89F 067	SCREW CAP	3	3	3	3	3	3	3	3	3	3		3 PCS/SET
7	E22 41G 010	FRONT PANEL	1	1	1	1	1	1	1	1	1	1		
8	E22 61H 100	AIR FILTER	2	2	2	2	2	2	2	2	2	2		1 PC/SET
9	E22 41G 975	CORNER BOX (RIGHT)	1	1	1	1	1	1	1	1	1	1		
10	E22 89F 970	INSTALLATION PLATE	1	1	1	1	1	1	1	1	1	1		

## 1-26. ACCESSORY AND REMOTE CONTROLLER

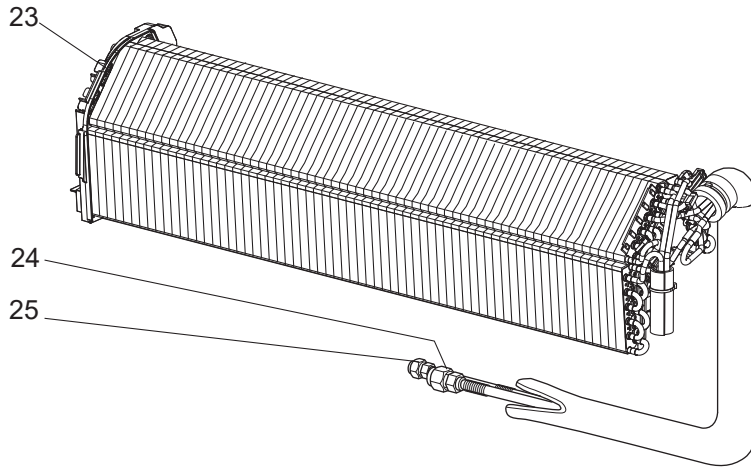
1. The part quantity below indicates the required number of pieces per unit.

No.	Part No.	Part name	MSZ-AP60VG - E1	MSZ-AP60VG - ET1	MSZ-AP60VG - ER1	MSZ-AP60VG - E2	MSZ-AP60VG - ET2	MSZ-AP71VG - E1	MSZ-AP71VG - ET1	MSZ-AP71VG - ER1	MSZ-AP71VG - E2	MSZ-AP71VG - ET2	Symbol in Wiring Diagram	Remarks
11	E22 41G 426	REMOTE CONTROLLER	1	1				1	1					SG18D
11	E22 65H 426	REMOTE CONTROLLER			1					1				SG18D
11	E22 12M 426	REMOTE CONTROLLER				1	1				1	1		SH20C

**MSZ-AP60VG - [E1, ET1, ER1, E2, ET2] MSZ-AP71VG - [E1, ET1, ER1, E2, ET2]**  
**1-27. INDOOR UNIT ELECTRICAL PARTS AND FUNCTIONAL PARTS**



**1-28. INDOOR UNIT HEAT EXCHANGER**



## 1-27. INDOOR UNIT ELECTRICAL PARTS AND FUNCTIONAL PARTS

1. The part quantity below indicates the required number of pieces per unit.

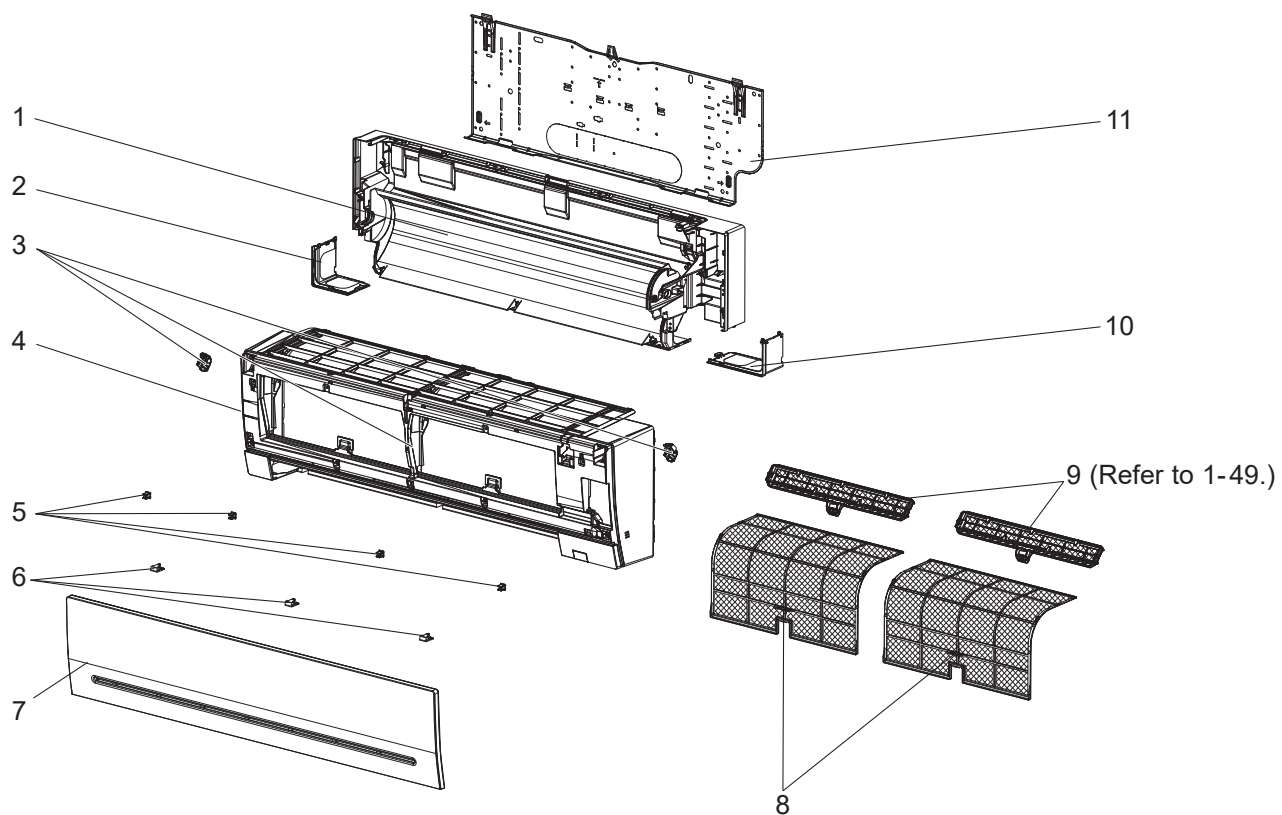
No.	Part No.	Part name	MSZ-AP60VG - [E1]	MSZ-AP60VG - [E1]	MSZ-AP60VG - [ER1]	MSZ-AP60VG - [E2]	MSZ-AP60VG - [ET2]	MSZ-AP71VG - [E1]	MSZ-AP71VG - [E1]	MSZ-AP71VG - [ER1]	MSZ-AP71VG - [E2]	MSZ-AP71VG - [ET2]	Symbol in Wiring Diagram	Remarks [Drawing No.]
1	E22 89F 235	NOZZLE ASSEMBLY	1	1	1	1	1	1	1	1	1	1		
2	E22 82F 303	VANE MOTOR UNIT LEFT (VERTICAL)	1	1	1	1	1	1	1	1	1	1		Includes MV2
3	E22 89F 041	VANE (LOWER)	1	1	1	1	1	1	1	1	1	1		
4	E22 89F 040	VANE (UPPER)	1	1	1	1	1	1	1	1	1	1		
5	E22 A89 303	VANE MOTOR (HORIZONTAL)	2	2	2	2	2	2	2	2	2	2	MV1	UP & DOWN
6	E22 89F 095	DISPLAY AND RECEIVER P.C. BOARD HOLDER	1	1	1	1	1	1	1	1	1	1		
7	E22 84F 303	VANE MOTOR UNIT RIGHT (VERTICAL)	1	1	1	1	1	1	1	1	1	1		Includes MV2
8	E22 C32 303	VANE MOTOR (VERTICAL)	2	2	2	2	2	2	2	2	2	2	MV2	RIGHT & LEFT
9	E22 89F 541	WATER CUT	1	1	1	1	1							
9	E22 42G 541	WATER CUT						1	1	1	1	1		
10	E22 F28 784	V.A. CLAMP	1	1	1	1	1	1	1	1	1	1		
11	E22 41G 329	DISPLAY P.C. BOARD	1	1	1	1	1	1	1	1	1	1		Includes RECEIVER P.C. BOARD and SWITCH/BUZZER P.C. BOARD
12	E22 12M 452	ELECTRONIC CONTROL P.C. BOARD	1	1	1	1	1							Includes TERMINAL P.C. BOARD with TERMINAL BLOCK and ROOM TEMPERATURE THERMISTOR (RT11)
12	E22 13M 452	ELECTRONIC CONTROL P.C. BOARD						1	1	1	1	1		Includes TERMINAL P.C. BOARD with TERMINAL BLOCK and ROOM TEMPERATURE THERMISTOR (RT11)
13	E22 K90 385	VARISTOR	1	1	1	1	1	1	1	1	1	1	NR11	
14	E22 A49 382	FUSE	1	1	1	1	1	1	1	1	1	1	F11	T3.15AL250V
15	E22 41G 307	INDOOR COIL THERMISTOR	1	1	1	1	1						RT12,RT13	
15	E22 R86 307	INDOOR COIL THERMISTOR						1	1	1	1	1	RT12,RT13	
16	E22 90F 333	MOTOR BED	1	1	1	1	1	1	1	1	1	1		
17	E22 89F 333	MOTOR BAND	1	1	1	1	1	1	1	1	1	1		
18	E22 89F 300	INDOOR FAN MOTOR	1	1	1	1	1	1	1	1	1	1	MF	RC0J56-□□ Includes FAN MOTOR RUBBER MOUNT (2 PCS/SET)
19	E22 F28 302	LINE FLOW FAN	1	1	1	1	1	1	1	1	1	1		
20	E22 A89 509	BEARING MOUNT ASSEMBLY	1	1	1	1	1	1	1	1	1	1		
21	E22 T20 702	DRAIN HOSE	1	1	1	1	1	1	1	1	1	1		
22	—	DRAIN CAP	1	1	1	1	1	1	1	1	1	1		[ SU26R611H01 ]

## 1-28. INDOOR UNIT HEAT EXCHANGER

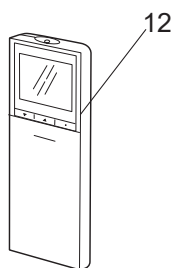
1. The part quantity below indicates the required number of pieces per unit.

No.	Part No.	Part name	MSZ-AP60VG - [E1]	MSZ-AP60VG - [E1]	MSZ-AP60VG - [ER1]	MSZ-AP60VG - [E2]	MSZ-AP60VG - [ET2]	MSZ-AP71VG - [E1]	MSZ-AP71VG - [E1]	MSZ-AP71VG - [ER1]	MSZ-AP71VG - [E2]	MSZ-AP71VG - [ET2]	Symbol in Wiring Diagram	Remarks
23	E22 61H 620	INDOOR HEAT EXCHANGER	1	1	1	1	1							
23	E22 67H 620	INDOOR HEAT EXCHANGER						1	1	1	1	1		
24	E22 155 666	UNION (GAS)	1	1	1	1	1	1	1	1	1	1		ø12.7
25	E22 151 667	UNION (LIQUID)	1	1	1	1	1	1	1	1	1	1		ø6.35

**MSZ-AP60VG - E3, ET3 MSZ-AP71VG - E3, ET3**  
**1-29. INDOOR UNIT STRUCTURAL PARTS**



**1-30. ACCESSORY AND REMOTE CONTROLLER**



## 1-29. INDOOR UNIT STRUCTURAL PARTS

1. The part quantity below indicates the required number of pieces per unit.

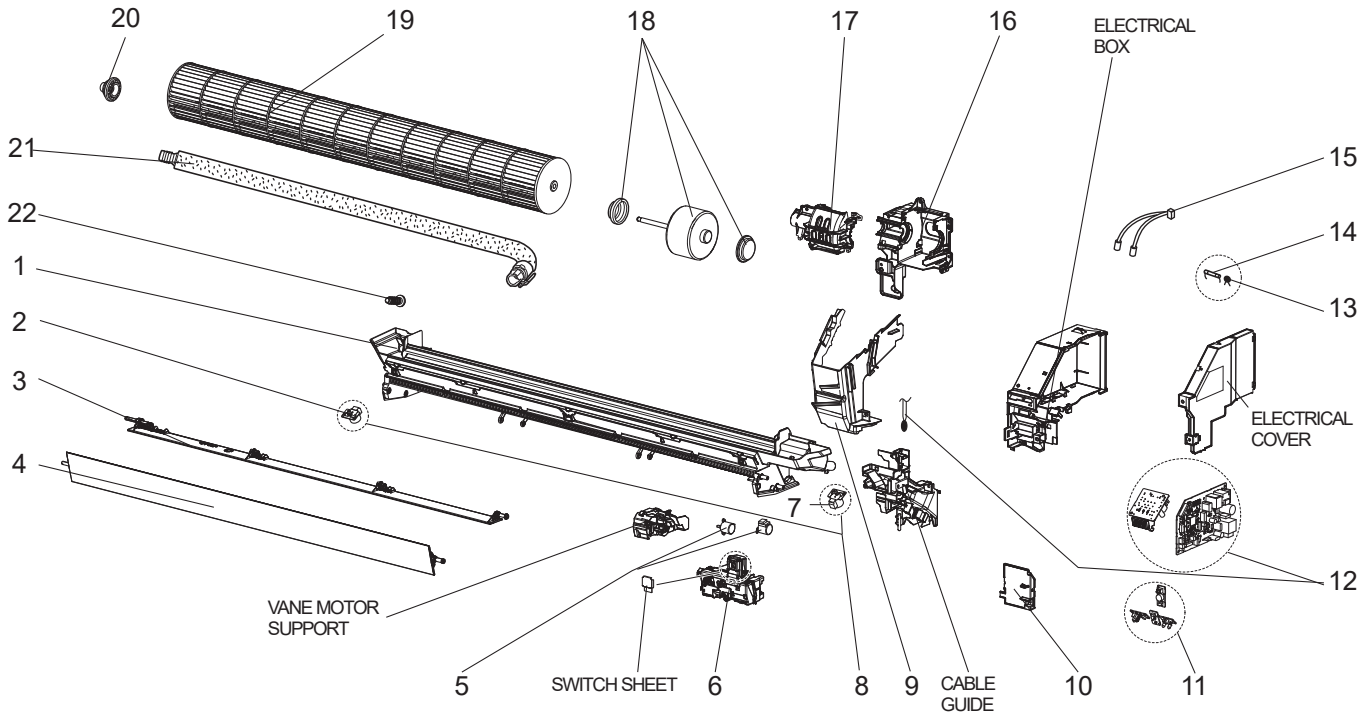
No.	Part No.	Part name	MSZ-AP60VG - [E3]	MSZ-AP60VG - [ET3]	MSZ-AP71VG - [E3]	MSZ-AP71VG - [ET3]	Symbol in Wiring Diagram	Remarks
1	E22 61H 234	BOX ASSEMBLY	1	1	1	1		
2	E22 41G 976	CORNER BOX (LEFT)	1	1	1	1		
3	E22 61H 000	PANEL ASSEMBLY	1		1			Includes No. 4, 5, 6 and 7
3	E22 63H 000	PANEL ASSEMBLY		1		1		Includes No. 4, 5, 6 and 7
4	E22 62H 000	PANEL ASSEMBLY (F)	1	1	1	1		
5	E22 408 142	CATCH	4	4	4	4		4 PCS/SET
6	E22 89F 067	SCREW CAP	3	3	3	3		3 PCS/SET
7	E22 41G 010	FRONT PANEL	1	1	1	1		
8	E22 61H 100	AIR FILTER	2	2	2	2		1 PC/SET
9	—	AIR CLEANING FILTER (V BLOCKING FILTER)	2	2	2	2		2 PCS/SET MAC-2460FT-E
10	E22 41G 975	CORNER BOX (RIGHT)	1	1	1	1		
11	E22 89F 970	INSTALLATION PLATE	1	1	1	1		

## 1-30. ACCESSORY AND REMOTE CONTROLLER

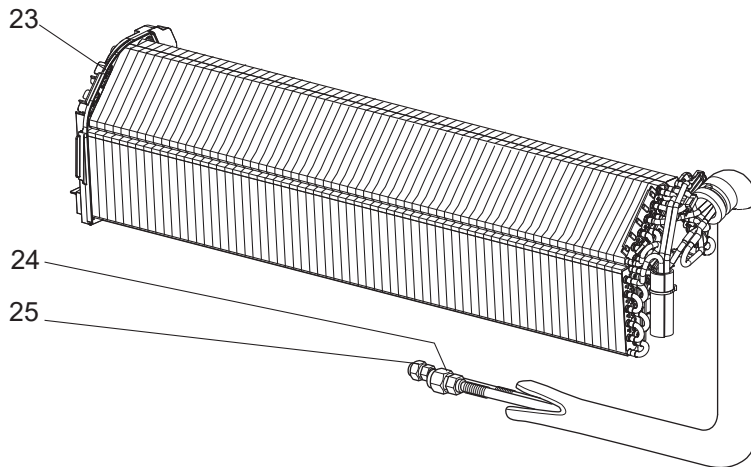
1. The part quantity below indicates the required number of pieces per unit.

No.	Part No.	Part name	MSZ-AP60VG - [E3]	MSZ-AP60VG - [ET3]	MSZ-AP71VG - [E3]	MSZ-AP71VG - [ET3]	Symbol in Wiring Diagram	Remarks
12	E22 12M 426	REMOTE CONTROLLER	1	1	1	1		SH20C

**MSZ-AP60VG - E3, ET3 MSZ-AP71VG - E3, ET3**  
**1-31. INDOOR UNIT ELECTRICAL PARTS AND FUNCTIONAL PARTS**



**1-32. INDOOR UNIT HEAT EXCHANGER**





## 1-31. INDOOR UNIT ELECTRICAL PARTS AND FUNCTIONAL PARTS

1. The part quantity below indicates the required number of pieces per unit.

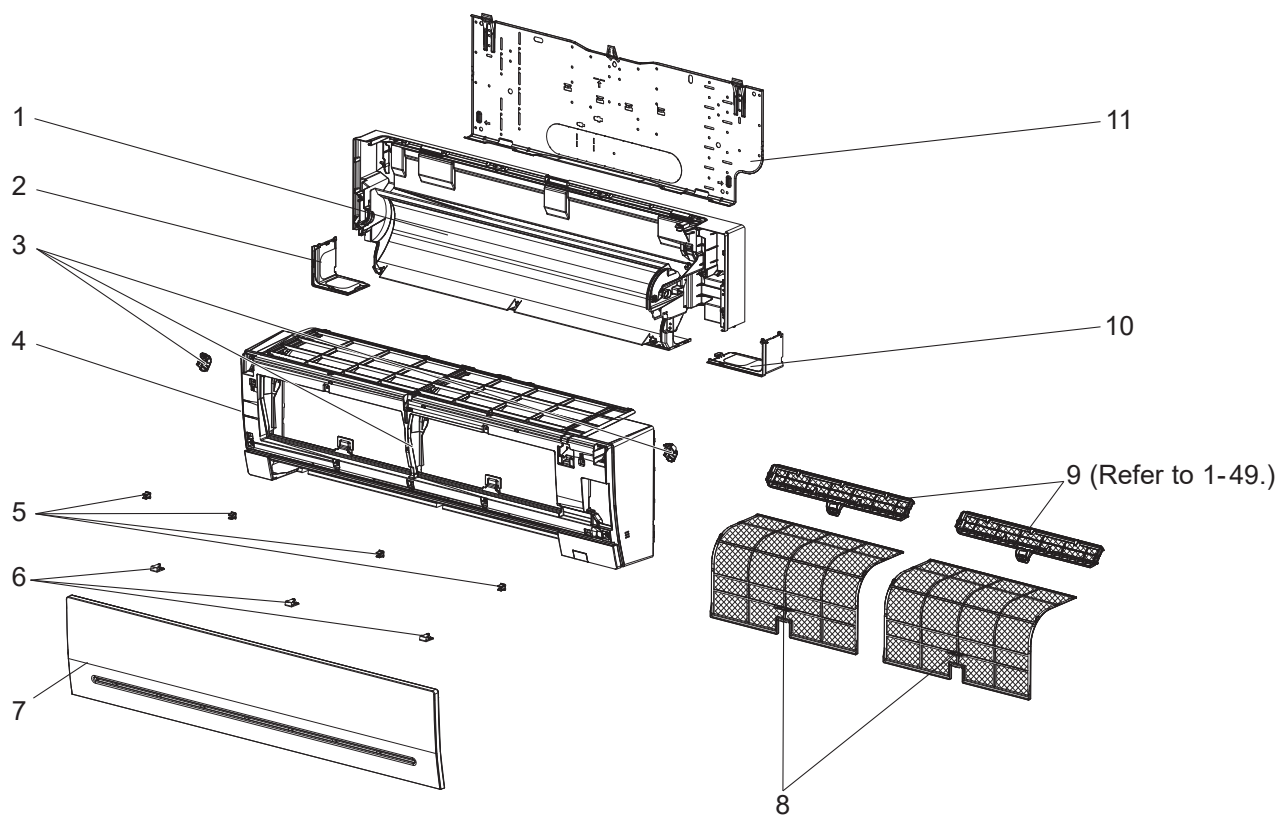
No.	Part No.	Part name	MSZ-AP60VG - E3	MSZ-AP60VG - ET3	MSZ-AP71VG - E3	MSZ-AP71VG - ET3	Symbol in Wiring Diagram	Remarks [Drawing No.]
1	E22 89F 235	NOZZLE ASSEMBLY	1	1	1	1		Full assembly except DRAIN HOSE
2	E22 82F 303	VANE MOTOR UNIT LEFT (VERTICAL)	1	1	1	1		Includes MV2
3	E22 89F 041	VANE (LOWER)	1	1	1	1		
4	E22 89F 040	VANE (UPPER)	1	1	1	1		
5	E22 A89 303	VANE MOTOR (HORIZONTAL)	2	2	2	2	MV1	UP & DOWN
6	E22 89F 095	DISPLAY AND RECEIVER P.C. BOARD HOLDER	1	1	1	1		
7	E22 84F 303	VANE MOTOR UNIT RIGHT (VERTICAL)	1	1	1	1		Includes MV2
8	E22 C32 303	VANE MOTOR (VERTICAL)	2	2	2	2	MV2	RIGHT & LEFT
9	E22 89F 541	WATER CUT	1	1				
9	E22 42G 541	WATER CUT			1	1		
10	E22 F28 784	V.A. CLAMP	1	1	1	1		
11	E22 41G 329	DISPLAY P.C. BOARD	1	1	1	1		Includes RECEIVER P.C. BOARD and SWITCH/BUZZER P.C. BOARD
12	E22 12M 452	ELECTRONIC CONTROL P.C. BOARD	1	1				Includes TERMINAL P.C. BOARD with TERMINAL BLOCK and ROOM TEMPERATURE THERMISTOR (RT11)
12	E22 13M 452	ELECTRONIC CONTROL P.C. BOARD			1	1		Includes TERMINAL P.C. BOARD with TERMINAL BLOCK and ROOM TEMPERATURE THERMISTOR (RT11)
13	E22 K90 385	VARISTOR	1	1	1	1	NR11	
14	E22 A49 382	FUSE	1	1	1	1	F11	T3.15AL250V
15	E22 41G 307	INDOOR COIL THERMISTOR	1	1			RT12,RT13	
15	E22 R86 307	INDOOR COIL THERMISTOR			1	1	RT12,RT13	
16	E22 90F 333	MOTOR BED	1	1	1	1		
17	E22 89F 333	MOTOR BAND	1	1	1	1		
18	E22 89F 300	INDOOR FAN MOTOR	1	1	1	1	MF	RC0J56-□□ Includes FAN MOTOR RUBBER MOUNT (2 PCS/SET)
19	E22 F28 302	LINE FLOW FAN	1	1	1	1		
20	E22 A89 509	BEARING MOUNT ASSEMBLY	1	1	1	1		
21	E22 T20 702	DRAIN HOSE	1	1	1	1		
22	—	DRAIN CAP	1	1	1	1		[ SU26R611H01 ]

## 1-32. INDOOR UNIT HEAT EXCHANGER

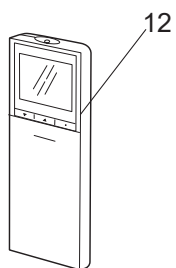
1. The part quantity below indicates the required number of pieces per unit.

No.	Part No.	Part name	MSZ-AP60VG - E3	MSZ-AP60VG - ET3	MSZ-AP71VG - E3	MSZ-AP71VG - ET3	Symbol in Wiring Diagram	Remarks
23	E22 61H 620	INDOOR HEAT EXCHANGER	1	1				
23	E22 67H 620	INDOOR HEAT EXCHANGER			1	1		
24	E22 155 666	UNION (GAS)	1	1	1	1		ø12.7
25	E22 151 667	UNION (LIQUID)	1	1	1	1		ø6.35

**MSZ-AP60VG - E4, ET4 MSZ-AP71VG - E4, ET4**  
**1-33. INDOOR UNIT STRUCTURAL PARTS**



**1-34. ACCESSORY AND REMOTE CONTROLLER**



### 1-33. INDOOR UNIT STRUCTURAL PARTS

1. The part quantity below indicates the required number of pieces per unit.

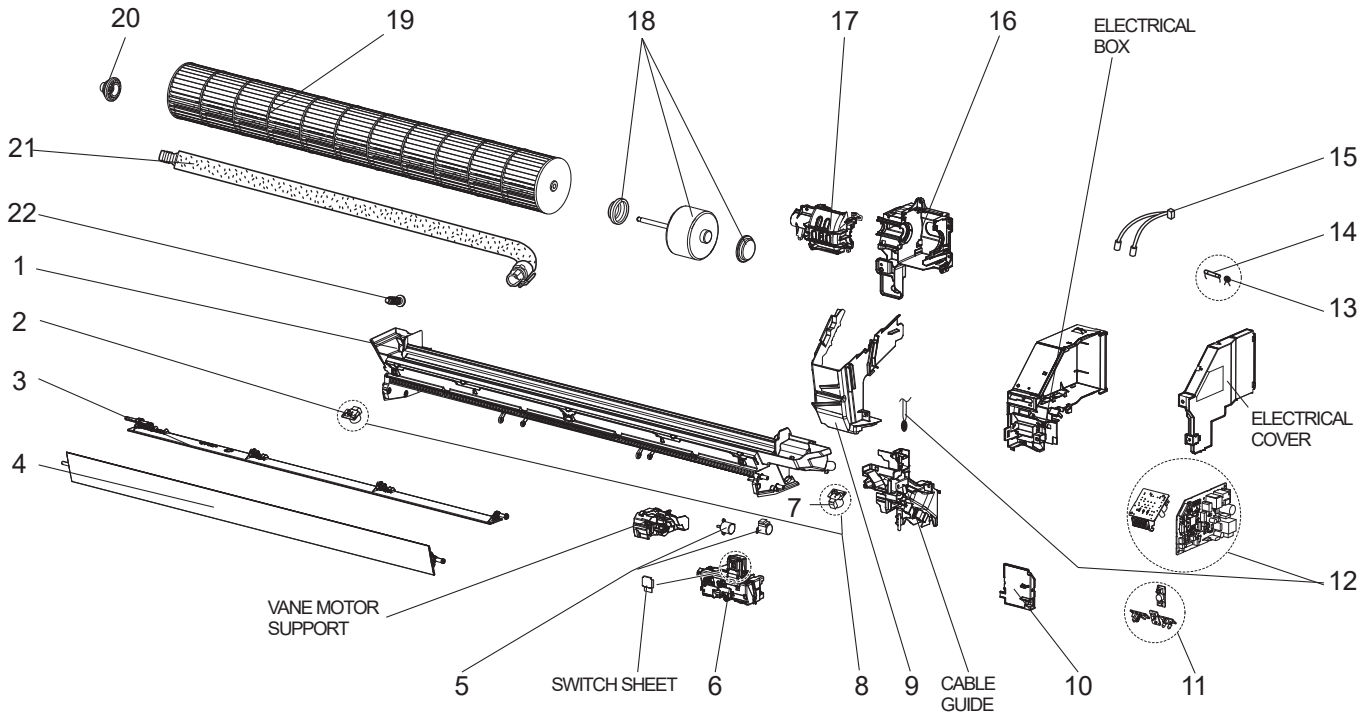
No.	Part No.	Part name	MSZ-AP60VG - [E4]	MSZ-AP60VG - [ET4]	MSZ-AP71VG - [E4]	MSZ-AP71VG - [ET4]	Symbol in Wiring Diagram	Remarks
1	E22 61H 234	BOX ASSEMBLY	1	1	1	1		
2	E22 41G 976	CORNER BOX (LEFT)	1	1	1	1		
3	E22 2F0 000	PANEL ASSEMBLY	1		1			Includes No. 4, 5, 6 and 7
3	E22 2F4 000	PANEL ASSEMBLY		1		1		Includes No. 4, 5, 6 and 7
4	E22 62H 000	PANEL ASSEMBLY (F)	1	1	1	1		
5	E22 408 142	CATCH	4	4	4	4		4 PCS/SET
6	E22 89F 067	SCREW CAP	3	3	3	3		3 PCS/SET
7	E22 41G 010	FRONT PANEL	1	1	1	1		
8	E22 61H 100	AIR FILTER	2	2	2	2		1 PC/SET
9	—	AIR CLEANING FILTER (V BLOCKING FILTER)	2	2	2	2		2 PCS/SET MAC-2460FT-E
10	E22 41G 975	CORNER BOX (RIGHT)	1	1	1	1		
11	E22 2F0 970	INSTALLATION PLATE	1	1	1	1		

### 1-34. ACCESSORY AND REMOTE CONTROLLER

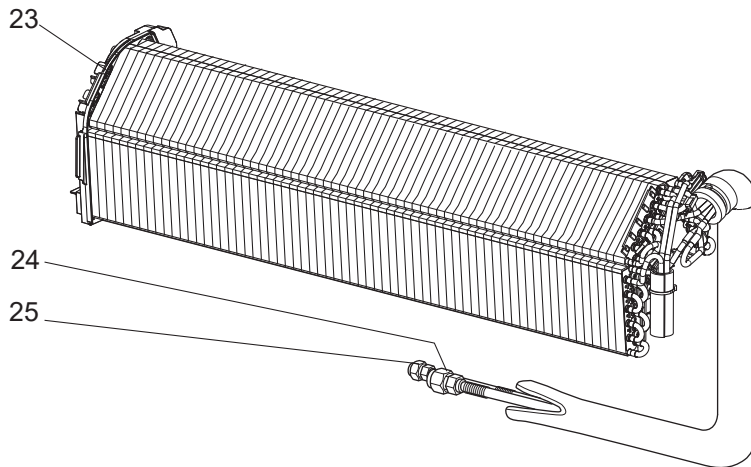
1. The part quantity below indicates the required number of pieces per unit.

No.	Part No.	Part name	MSZ-AP60VG - [E4]	MSZ-AP60VG - [ET4]	MSZ-AP71VG - [E4]	MSZ-AP71VG - [ET4]	Symbol in Wiring Diagram	Remarks
12	E22 12M 426	REMOTE CONTROLLER	1	1	1	1		SH20C

**MSZ-AP60VG - [E4], [ET4] MSZ-AP71VG - [E4], [ET4]**  
**1-35. INDOOR UNIT ELECTRICAL PARTS AND FUNCTIONAL PARTS**



**1-36. INDOOR UNIT HEAT EXCHANGER**



## 1-35. INDOOR UNIT ELECTRICAL PARTS AND FUNCTIONAL PARTS

1. The part quantity below indicates the required number of pieces per unit.

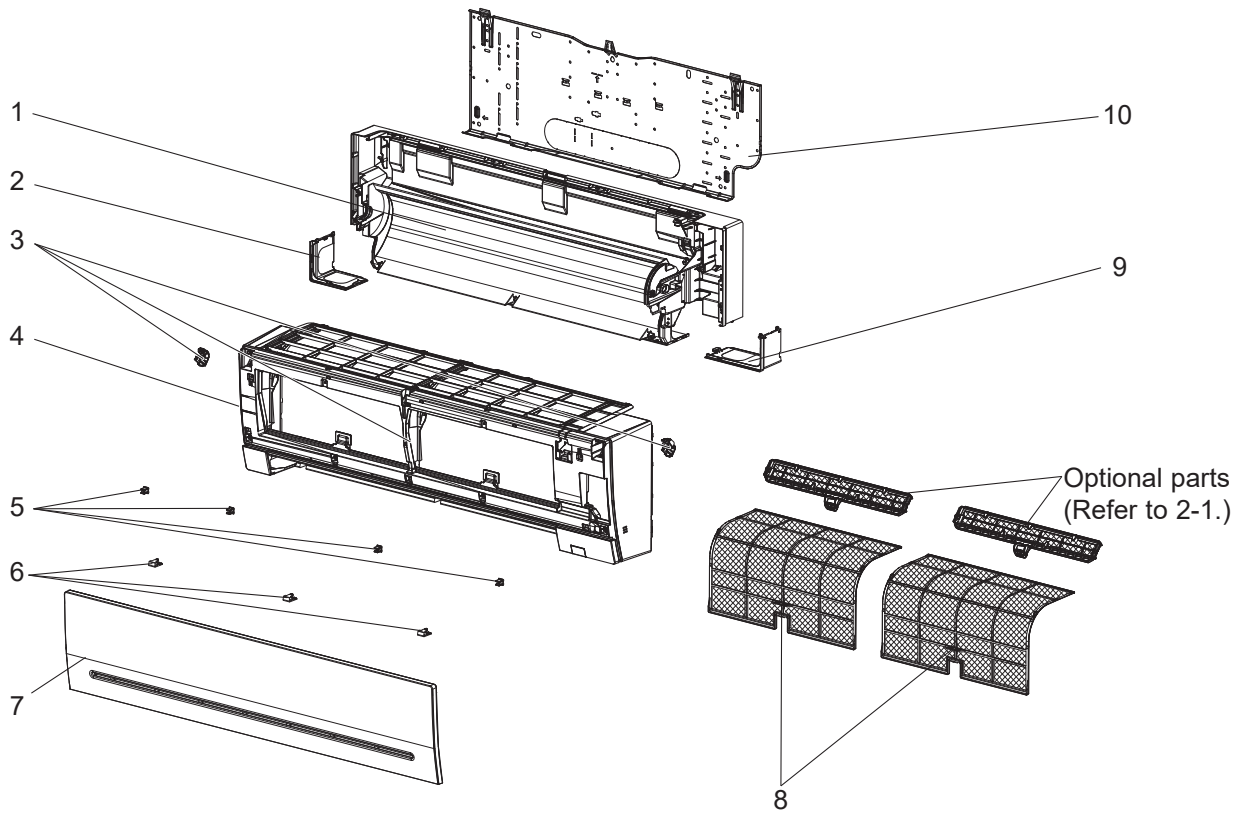
No.	Part No.	Part name	MSZ-AP60VG - [E4]	MSZ-AP60VG - [ET4]	MSZ-AP71VG - [E4]	MSZ-AP71VG - [ET4]	Symbol in Wiring Diagram	Remarks [Drawing No.]
1	E22 89F 235	NOZZLE ASSEMBLY	1	1	1	1		Full assembly except DRAIN HOSE
2	E22 82F 303	VANE MOTOR UNIT LEFT (VERTICAL)	1	1	1	1		Includes MV2
3	E22 89F 041	VANE (LOWER)	1	1	1	1		
4	E22 89F 040	VANE (UPPER)	1	1	1	1		
5	E22 A89 303	VANE MOTOR (HORIZONTAL)	2	2	2	2	MV1	UP & DOWN
6	E22 89F 095	DISPLAY AND RECEIVER P.C. BOARD HOLDER	1	1	1	1		
7	E22 84F 303	VANE MOTOR UNIT RIGHT (VERTICAL)	1	1	1	1		Includes MV2
8	E22 C32 303	VANE MOTOR (VERTICAL)	2	2	2	2	MV2	RIGHT & LEFT
9	E22 89F 541	WATER CUT	1	1				
9	E22 42G 541	WATER CUT			1	1		
10	E22 F28 784	V.A. CLAMP	1	1	1	1		
11	E22 2F0 329	DISPLAY P.C. BOARD	1	1	1	1		Includes RECEIVER P.C. BOARD and SWITCH/BUZZER P.C. BOARD
12	E22 2F0 452	ELECTRONIC CONTROL P.C. BOARD	1	1				Includes TERMINAL P.C. BOARD with TERMINAL BLOCK and ROOM TEMPERATURE THERMISTOR (RT11)
12	E22 2F1 452	ELECTRONIC CONTROL P.C. BOARD			1	1		Includes TERMINAL P.C. BOARD with TERMINAL BLOCK and ROOM TEMPERATURE THERMISTOR (RT11)
13	E22 K90 385	VARISTOR	1	1	1	1	NR11	
14	E22 42J 382	FUSE	1	1	1	1	F11	T3.15AL250V
15	E22 41G 307	INDOOR COIL THERMISTOR	1	1			RT12,RT13	
15	E22 R86 307	INDOOR COIL THERMISTOR			1	1	RT12,RT13	
16	E22 90F 333	MOTOR BED	1	1	1	1		
17	E22 F30 333	MOTOR BAND	1	1	1	1		
18	E22 89F 300	INDOOR FAN MOTOR	1	1	1	1	MF	RC0J56-□□ Includes FAN MOTOR RUBBER MOUNT (2 PCS/SET)
19	E22 F28 302	LINE FLOW FAN	1	1	1	1		
20	E22 A89 509	BEARING MOUNT ASSEMBLY	1	1	1	1		
21	E22 T20 702	DRAIN HOSE	1	1	1	1		
22	—	DRAIN CAP	1	1	1	1		[ SU26R611H01 ]

## 1-36. INDOOR UNIT HEAT EXCHANGER

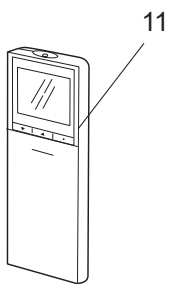
1. The part quantity below indicates the required number of pieces per unit.

No.	Part No.	Part name	MSZ-AP60VG - [E4]	MSZ-AP60VG - [ET4]	MSZ-AP71VG - [E4]	MSZ-AP71VG - [ET4]	Symbol in Wiring Diagram	Remarks
23	E22 61H 620	INDOOR HEAT EXCHANGER	1	1				
23	E22 2F1 620	INDOOR HEAT EXCHANGER			1	1		
24	E22 155 666	UNION (GAS)	1	1	1	1		ø12.7
25	E22 151 667	UNION (LIQUID)	1	1	1	1		ø6.35

**MSZ-AP60VGK - [E1], [ET1], [ER1], [E2], [ET2], [ER2] MSZ-AP71VGK - [E1], [ET1], [ER1], [E2], [ET2], [ER2]**  
**1-37. INDOOR UNIT STRUCTURAL PARTS**



**1-38. ACCESSORY AND REMOTE CONTROLLER**



## 1-37. INDOOR UNIT STRUCTURAL PARTS

1. The part quantity below indicates the required number of pieces per unit.

No.	Part No.	Part name	MSZ-AP60VGK - E1	MSZ-AP60VGK - ET1	MSZ-AP60VGK - ER1	MSZ-AP60VGK - E2	MSZ-AP60VGK - ET2	MSZ-AP60VGK - ER2	MSZ-AP71VGK - E1	MSZ-AP71VGK - ET1	MSZ-AP71VGK - ER1	MSZ-AP71VGK - E2	MSZ-AP71VGK - ET2	Symbol in Wiring Diagram	Remarks
1	E22 61H 234	BOX ASSEMBLY	1	1	1	1	1	1	1	1	1	1	1		
2	E22 41G 976	CORNER BOX (LEFT)	1	1	1	1	1	1	1	1	1	1	1		
3	E22 61H 000	PANEL ASSEMBLY	1			1			1			1			Includes No. 4, 5, 6 and 7
3	E22 63H 000	PANEL ASSEMBLY		1			1			1			1		Includes No. 4, 5, 6 and 7
3	E22 65H 000	PANEL ASSEMBLY			1			1			1			1	Includes No. 4, 5, 6 and 7
4	E22 62H 000	PANEL ASSEMBLY (F)	1	1	1	1	1	1	1	1	1	1	1		
5	E22 408 142	CATCH	4	4	4	4	4	4	4	4	4	4	4		4 PCS/SET
6	E22 89F 067	SCREW CAP	3	3	3	3	3	3	3	3	3	3	3		3 PCS/SET
7	E22 41G 010	FRONT PANEL	1	1	1	1	1	1	1	1	1	1	1		
8	E22 61H 100	AIR FILTER	2	2	2	2	2	2	2	2	2	2	2		1 PC/SET
9	E22 41G 975	CORNER BOX (RIGHT)	1	1	1	1	1	1	1	1	1	1	1		
10	E22 89F 970	INSTALLATION PLATE	1	1	1	1	1	1	1	1	1	1	1		

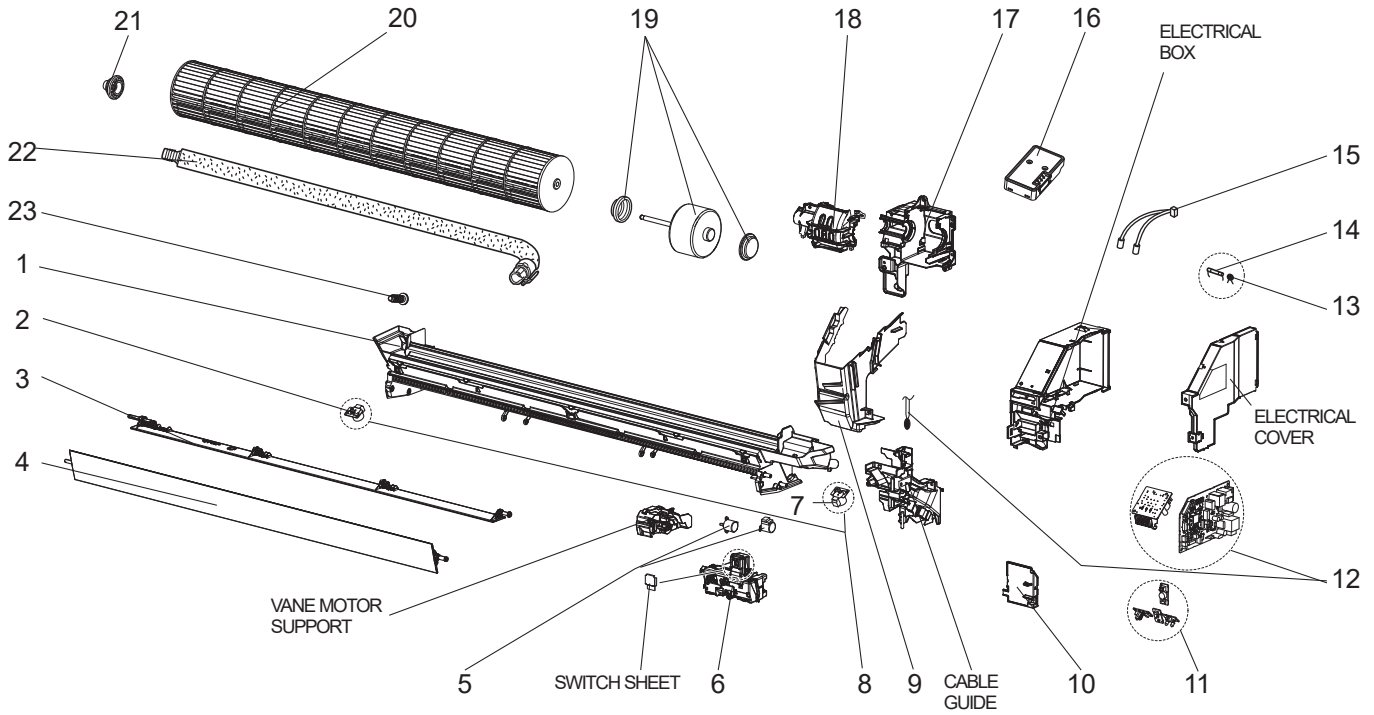
## 1-38. ACCESSORY AND REMOTE CONTROLLER

1. The part quantity below indicates the required number of pieces per unit.

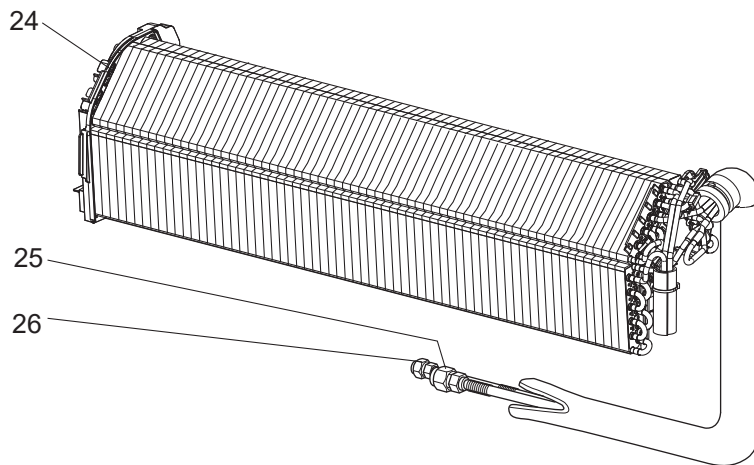
No.	Part No.	Part name	MSZ-AP60VGK - E1	MSZ-AP60VGK - ET1	MSZ-AP60VGK - ER1	MSZ-AP60VGK - E2	MSZ-AP60VGK - ET2	MSZ-AP60VGK - ER2	MSZ-AP71VGK - E1	MSZ-AP71VGK - ET1	MSZ-AP71VGK - ER1	MSZ-AP71VGK - E2	MSZ-AP71VGK - ET2	Symbol in Wiring Diagram	Remarks
11	E22 41G 426	REMOTE CONTROLLER	1	1					1	1					SG18D
11	E22 65H 426	REMOTE CONTROLLER			1						1				SG18D
11	E22 12M 426	REMOTE CONTROLLER				1	1					1	1		SH20C
11	E22 22P 426	REMOTE CONTROLLER						1						1	SH20C



**MSZ-AP60VGK - [E1, ET1, ER1, E2, ET2, ER2] MSZ-AP71VGK - [E1, ET1, ER1, E2, ET2, ER2]**  
**1-39. INDOOR UNIT ELECTRICAL PARTS AND FUNCTIONAL PARTS**



**1-40. INDOOR UNIT HEAT EXCHANGER**



## 1-39. INDOOR UNIT ELECTRICAL PARTS AND FUNCTIONAL PARTS

1. The part quantity below indicates the required number of pieces per unit.

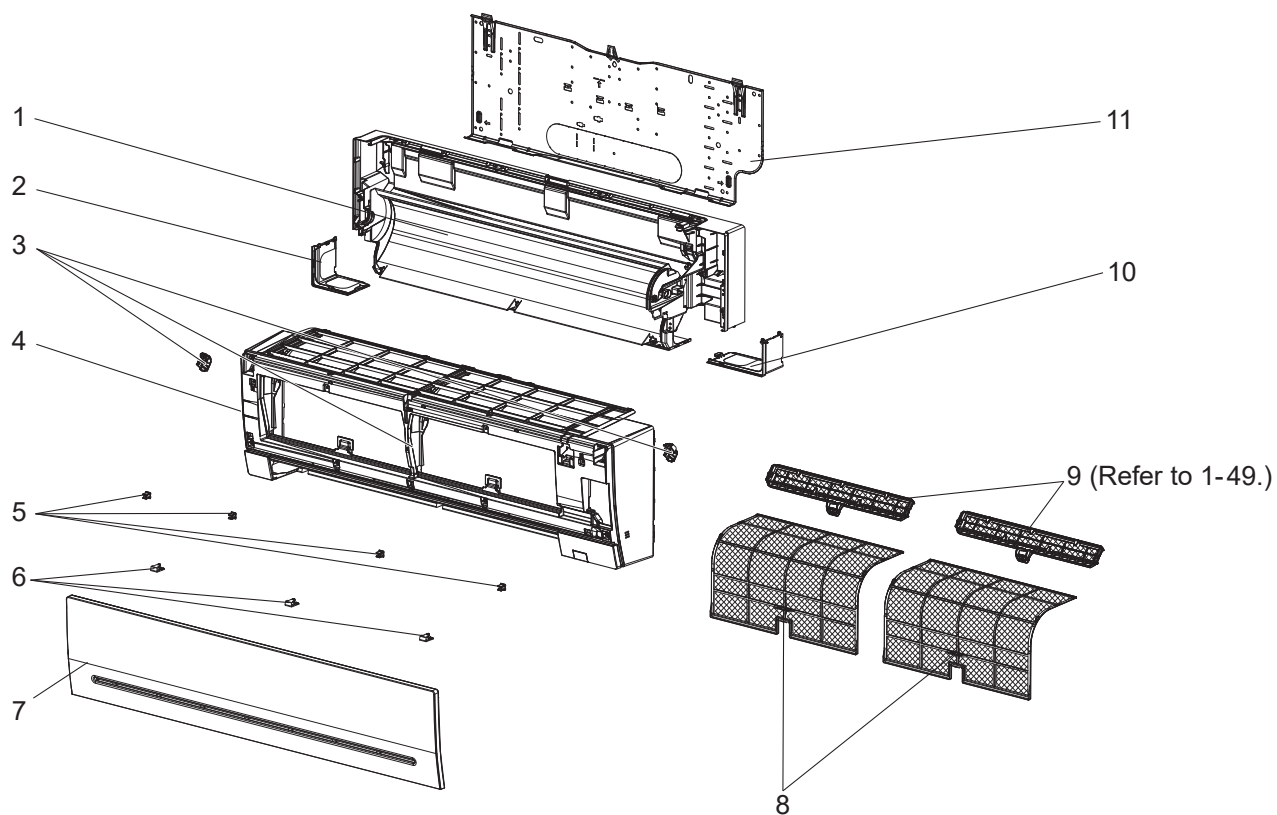
No.	Part No.	Part name	MSZ-AP60VGK - E1	MSZ-AP60VGK - E1	MSZ-AP60VGK - E1	MSZ-AP60VGK - E2	MSZ-AP60VGK - E2	MSZ-AP60VGK - E2	MSZ-AP71VGK - E1	MSZ-AP71VGK - E1	MSZ-AP71VGK - E1	MSZ-AP71VGK - E2	MSZ-AP71VGK - E2	MSZ-AP71VGK - E2	Symbol in Wiring Diagram	Remarks [Drawing No.]
1	E22 89F 235	NOZZLE ASSEMBLY	1	1	1	1	1	1	1	1	1	1	1	1		Full assembly except DRAIN HOSE
2	E22 82F 303	VANE MOTOR UNIT LEFT (VERTICAL)	1	1	1	1	1	1	1	1	1	1	1	1		Includes MV2
3	E22 89F 041	VANE (LOWER)	1	1	1	1	1	1	1	1	1	1	1			
4	E22 89F 040	VANE (UPPER)	1	1	1	1	1	1	1	1	1	1	1			
5	E22 A89 303	VANE MOTOR (HORIZONTAL)	2	2	2	2	2	2	2	2	2	2	2	2	MV1	UP & DOWN
6	E22 89F 095	DISPLAY AND RECEIVER P.C. BOARD HOLDER	1	1	1	1	1	1	1	1	1	1	1			
7	E22 84F 303	VANE MOTOR UNIT RIGHT (VERTICAL)	1	1	1	1	1	1	1	1	1	1	1			Includes MV2
8	E22 C32 303	VANE MOTOR (VERTICAL)	2	2	2	2	2	2	2	2	2	2	2	2	MV2	RIGHT & LEFT
9	E22 89F 541	WATER CUT	1	1	1	1	1	1								
9	E22 42G 541	WATER CUT						1	1	1	1	1	1			
10	E22 F28 784	V.A. CLAMP	1	1	1	1	1	1	1	1	1	1	1			
11	E22 41G 329	DISPLAY P.C. BOARD	1	1	1	1	1	1	1	1	1	1	1			Includes RECEIVER P.C. BOARD and SWITCH/BUZZER P.C. BOARD
12	E22 12M 452	ELECTRONIC CONTROL P.C. BOARD	1	1	1	1	1	1								Includes TERMINAL P.C. BOARD with TERMINAL BLOCK and ROOM TEMPERATURE THERMISTOR (RT11)
12	E22 13M 452	ELECTRONIC CONTROL P.C. BOARD							1	1	1	1	1			Includes TERMINAL P.C. BOARD with TERMINAL BLOCK and ROOM TEMPERATURE THERMISTOR (RT11)
13	E22 K90 385	VARISTOR	1	1	1	1	1	1	1	1	1	1	1	NR11		
14	E22 A49 382	FUSE	1	1	1	1	1	1	1	1	1	1	1	F11		T3.15AL250V
15	E22 41G 307	INDOOR COIL THERMISTOR	1	1	1	1	1	1							RT12, RT13	
15	E22 R86 307	INDOOR COIL THERMISTOR							1	1	1	1	1			RT12, RT13
16	E22 61H 457	Wi-Fi INTERFACE MAC-567IFB2-E	1	1	1				1	1	1					MAC-567IFB2-E
16	E22 22P 457	Wi-Fi INTERFACE MAC-577IF2-E				1	1	1				1	1			MAC-577IF2-E
17	E22 90F 333	MOTOR BED	1	1	1	1	1	1	1	1	1	1	1			
18	E22 89F 333	MOTOR BAND	1	1	1	1	1	1	1	1	1	1	1			
19	E22 89F 300	INDOOR FAN MOTOR	1	1	1	1	1	1	1	1	1	1	1		MF	RC0J56-□□ Includes FAN MOTOR RUBBER MOUNT (2 PCS/SET)
20	E22 F28 302	LINE FLOW FAN	1	1	1	1	1	1	1	1	1	1	1			
21	E22 A89 509	BEARING MOUNT ASSEMBLY	1	1	1	1	1	1	1	1	1	1	1			
22	E22 T20 702	DRAIN HOSE	1	1	1	1	1	1	1	1	1	1	1			
23	—	DRAIN CAP	1	1	1	1	1	1	1	1	1	1	1			[ SU26R611H01 ]

## 1-40. INDOOR UNIT HEAT EXCHANGER

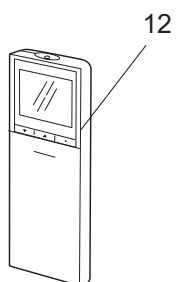
1. The part quantity below indicates the required number of pieces per unit.

No.	Part No.	Part name	MSZ-AP60VGK - E1	MSZ-AP60VGK - E1	MSZ-AP60VGK - E1	MSZ-AP60VGK - E2	MSZ-AP60VGK - E2	MSZ-AP60VGK - E2	MSZ-AP71VGK - E1	MSZ-AP71VGK - E1	MSZ-AP71VGK - E1	MSZ-AP71VGK - E2	MSZ-AP71VGK - E2	MSZ-AP71VGK - E2	Symbol in Wiring Diagram	Remarks
24	E22 61H 620	INDOOR HEAT EXCHANGER	1	1	1	1	1	1								
24	E22 67H 620	INDOOR HEAT EXCHANGER							1	1	1	1	1			
25	E22 155 666	UNION (GAS)	1	1	1	1	1	1	1	1	1	1	1			ø12.7
26	E22 151 667	UNION (LIQUID)	1	1	1	1	1	1	1	1	1	1	1			ø6.35

**MSZ-AP60VGK - E3, ET3, ER3 MSZ-AP71VGK - E3, ET3, ER3**  
**1-41. INDOOR UNIT STRUCTURAL PARTS**



**1-42. ACCESSORY AND REMOTE CONTROLLER**



## 1-41. INDOOR UNIT STRUCTURAL PARTS

1. The part quantity below indicates the required number of pieces per unit.

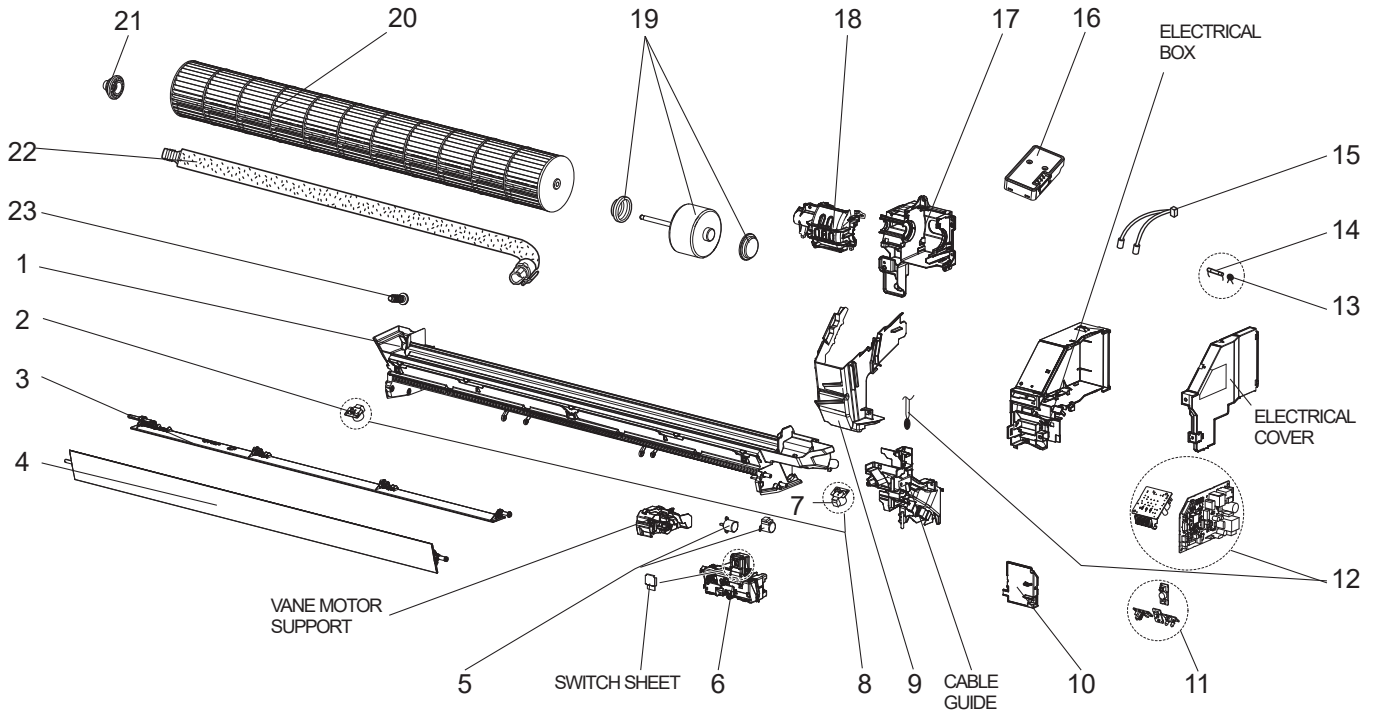
No.	Part No.	Part name	MSZ-AP60VGK - E3	MSZ-AP60VGK - ET3	MSZ-AP60VGK - ER3	MSZ-AP71VGK - E3	MSZ-AP71VGK - ET3	MSZ-AP71VGK - ER3	Symbol in Wiring Diagram	Remarks
1	E22 61H 234	BOX ASSEMBLY	1	1	1	1	1	1		
2	E22 41G 976	CORNER BOX (LEFT)	1	1	1	1	1	1		
3	E22 61H 000	PANEL ASSEMBLY	1			1				Includes No. 4, 5, 6 and 7
3	E22 63H 000	PANEL ASSEMBLY		1			1			Includes No. 4, 5, 6 and 7
3	E22 65H 000	PANEL ASSEMBLY			1			1		Includes No. 4, 5, 6 and 7
4	E22 62H 000	PANEL ASSEMBLY (F)	1	1	1	1	1	1		
5	E22 408 142	CATCH	4	4	4	4	4	4		4 PCS/SET
6	E22 89F 067	SCREW CAP	3	3	3	3	3	3		3 PCS/SET
7	E22 41G 010	FRONT PANEL	1	1	1	1	1	1		
8	E22 61H 100	AIR FILTER	2	2	2	2	2	2		1 PC/SET
9	—	AIR CLEANING FILTER (V BLOCKING FILTER)	2	2	2	2	2	2		2 PCS/SET MAC-2460FT-E
10	E22 41G 975	CORNER BOX (RIGHT)	1	1	1	1	1	1		
11	E22 89F 970	INSTALLATION PLATE	1	1	1	1	1	1		

## 1-42. ACCESSORY AND REMOTE CONTROLLER

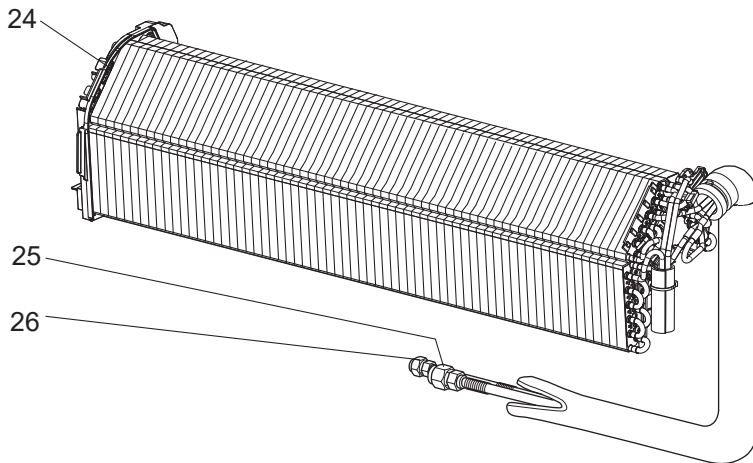
1. The part quantity below indicates the required number of pieces per unit.

No.	Part No.	Part name	MSZ-AP60VGK - E3	MSZ-AP60VGK - ET3	MSZ-AP60VGK - ER3	MSZ-AP71VGK - E3	MSZ-AP71VGK - ET3	MSZ-AP71VGK - ER3	Symbol in Wiring Diagram	Remarks
12	E22 12M 426	REMOTE CONTROLLER	1	1		1	1			SH20C
12	E22 22P 426	REMOTE CONTROLLER			1			1		SH20C

**MSZ-AP60VGK - [E3], [ET3], [ER3] MSZ-AP71VGK - [E3], [ET3], [ER3]**  
**1-43. INDOOR UNIT ELECTRICAL PARTS AND FUNCTIONAL PARTS**



**1-44. INDOOR UNIT HEAT EXCHANGER**



### 1-43. INDOOR UNIT ELECTRICAL PARTS AND FUNCTIONAL PARTS

1. The part quantity below indicates the required number of pieces per unit.

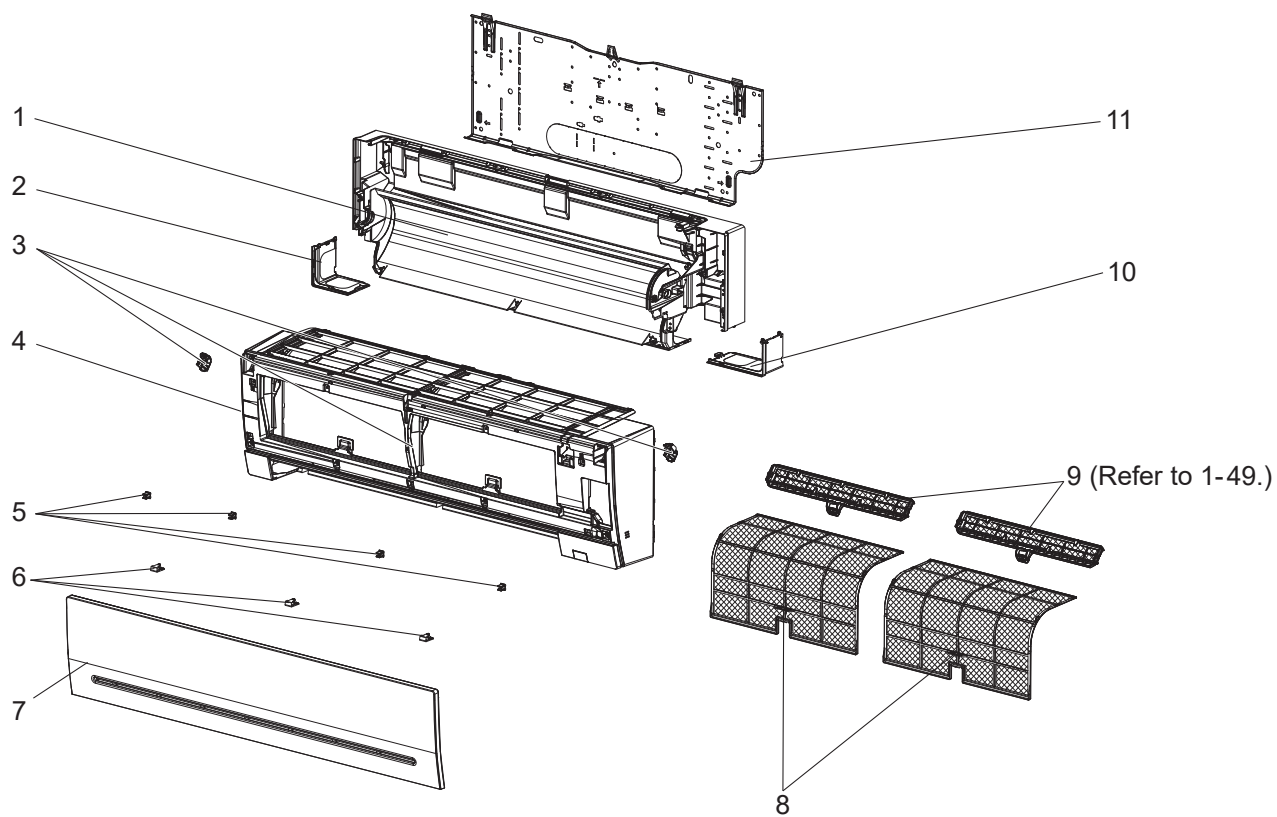
No.	Part No.	Part name	MSZ-AP60VGK - E3	MSZ-AP60VGK - ET3	MSZ-AP60VGK - ER3	MSZ-AP71VGK - E3	MSZ-AP71VGK - ET3	MSZ-AP71VGK - ER3	Symbol in Wiring Diagram	Remarks [Drawing No.]
1	E22 89F 235	NOZZLE ASSEMBLY	1	1	1	1	1	1		Full assembly except DRAIN HOSE
2	E22 82F 303	VANE MOTOR UNIT LEFT (VERTICAL)	1	1	1	1	1	1		Includes MV2
3	E22 89F 041	VANE (LOWER)	1	1	1	1	1	1		
4	E22 89F 040	VANE (UPPER)	1	1	1	1	1	1		
5	E22 A89 303	VANE MOTOR (HORIZONTAL)	2	2	2	2	2	2	MV1	UP & DOWN
6	E22 89F 095	DISPLAY AND RECEIVER P.C. BOARD HOLDER	1	1	1	1	1	1		
7	E22 84F 303	VANE MOTOR UNIT RIGHT (VERTICAL)	1	1	1	1	1	1		Includes MV2
8	E22 C32 303	VANE MOTOR (VERTICAL)	2	2	2	2	2	2	MV2	RIGHT & LEFT
9	E22 89F 541	WATER CUT	1	1	1					
9	E22 42G 541	WATER CUT				1	1	1		
10	E22 F28 784	V.A. CLAMP	1	1	1	1	1	1		
11	E22 41G 329	DISPLAY P.C. BOARD	1	1	1	1	1	1		Includes RECEIVER P.C. BOARD and SWITCH/BUZZER P.C. BOARD
12	E22 12M 452	ELECTRONIC CONTROL P.C. BOARD	1	1	1					Includes TERMINAL P.C. BOARD with TERMINAL BLOCK and ROOM TEMPERATURE THERMISTOR (RT11)
12	E22 13M 452	ELECTRONIC CONTROL P.C. BOARD				1	1	1		Includes TERMINAL P.C. BOARD with TERMINAL BLOCK and ROOM TEMPERATURE THERMISTOR (RT11)
13	E22 K90 385	VARISTOR	1	1	1	1	1	1	NR11	
14	E22 A49 382	FUSE	1	1	1	1	1	1	F11	T3.15AL250V
15	E22 41G 307	INDOOR COIL THERMISTOR	1	1	1				RT12, RT13	
15	E22 R86 307	INDOOR COIL THERMISTOR				1	1	1	RT12, RT13	
16	E22 22P 457	Wi-Fi INTERFACE MAC-577IF2-E	1	1	1	1	1	1		MAC-577IF2-E
17	E22 90F 333	MOTOR BED	1	1	1	1	1	1		
18	E22 89F 333	MOTOR BAND	1	1	1	1	1	1		
19	E22 89F 300	INDOOR FAN MOTOR	1	1	1	1	1	1	MF	RC0J56-□□ Includes FAN MOTOR RUBBER MOUNT (2 PCS/SET)
20	E22 F28 302	LINE FLOW FAN	1	1	1	1	1	1		
21	E22 A89 509	BEARING MOUNT ASSEMBLY	1	1	1	1	1	1		
22	E22 T20 702	DRAIN HOSE	1	1	1	1	1	1		
23	—	DRAIN CAP	1	1	1	1	1	1		[ SU26R611H01 ]

### 1-44. INDOOR UNIT HEAT EXCHANGER

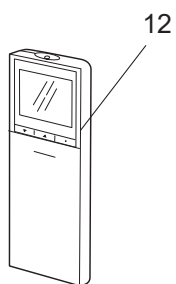
1. The part quantity below indicates the required number of pieces per unit.

No.	Part No.	Part name	MSZ-AP60VGK - E3	MSZ-AP60VGK - ET3	MSZ-AP60VGK - ER3	MSZ-AP71VGK - E3	MSZ-AP71VGK - ET3	MSZ-AP71VGK - ER3	Symbol in Wiring Diagram	Remarks
24	E22 61H 620	INDOOR HEAT EXCHANGER	1	1	1					
24	E22 67H 620	INDOOR HEAT EXCHANGER				1	1	1		
25	E22 155 666	UNION (GAS)	1	1	1	1	1	1		ø12.7
26	E22 151 667	UNION (LIQUID)	1	1	1	1	1	1		ø6.35

**MSZ-AP60VGK - E4, ET4 MSZ-AP71VGK - E4, ET4**  
**1-45. INDOOR UNIT STRUCTURAL PARTS**



**1-46. ACCESSORY AND REMOTE CONTROLLER**





## 1-45. INDOOR UNIT STRUCTURAL PARTS

1. The part quantity below indicates the required number of pieces per unit.

No.	Part No.	Part name	MSZ-AP60VGK - E4	MSZ-AP60VGK - ET4	MSZ-AP71VGK - E4	MSZ-AP71VGK - ET4	Symbol in Wiring Diagram	Remarks
1	E22 61H 234	BOX ASSEMBLY	1	1	1	1		
2	E22 41G 976	CORNER BOX (LEFT)	1	1	1	1		
3	E22 2F0 000	PANEL ASSEMBLY	1		1			Includes No. 4, 5, 6 and 7
3	E22 2F4 000	PANEL ASSEMBLY		1		1		Includes No. 4, 5, 6 and 7
4	E22 62H 000	PANEL ASSEMBLY (F)	1	1	1	1		
5	E22 408 142	CATCH	4	4	4	4		4 PCS/SET
6	E22 89F 067	SCREW CAP	3	3	3	3		3 PCS/SET
7	E22 41G 010	FRONT PANEL	1	1	1	1		
8	E22 61H 100	AIR FILTER	2	2	2	2		1 PC/SET
9	-	AIR CLEANING FILTER (V BLOCKING FILTER)	2	2	2	2		2 PCS/SET MAC-2460FT-E
10	E22 41G 975	CORNER BOX (RIGHT)	1	1	1	1		
11	E22 2F0 970	INSTALLATION PLATE	1	1	1	1		

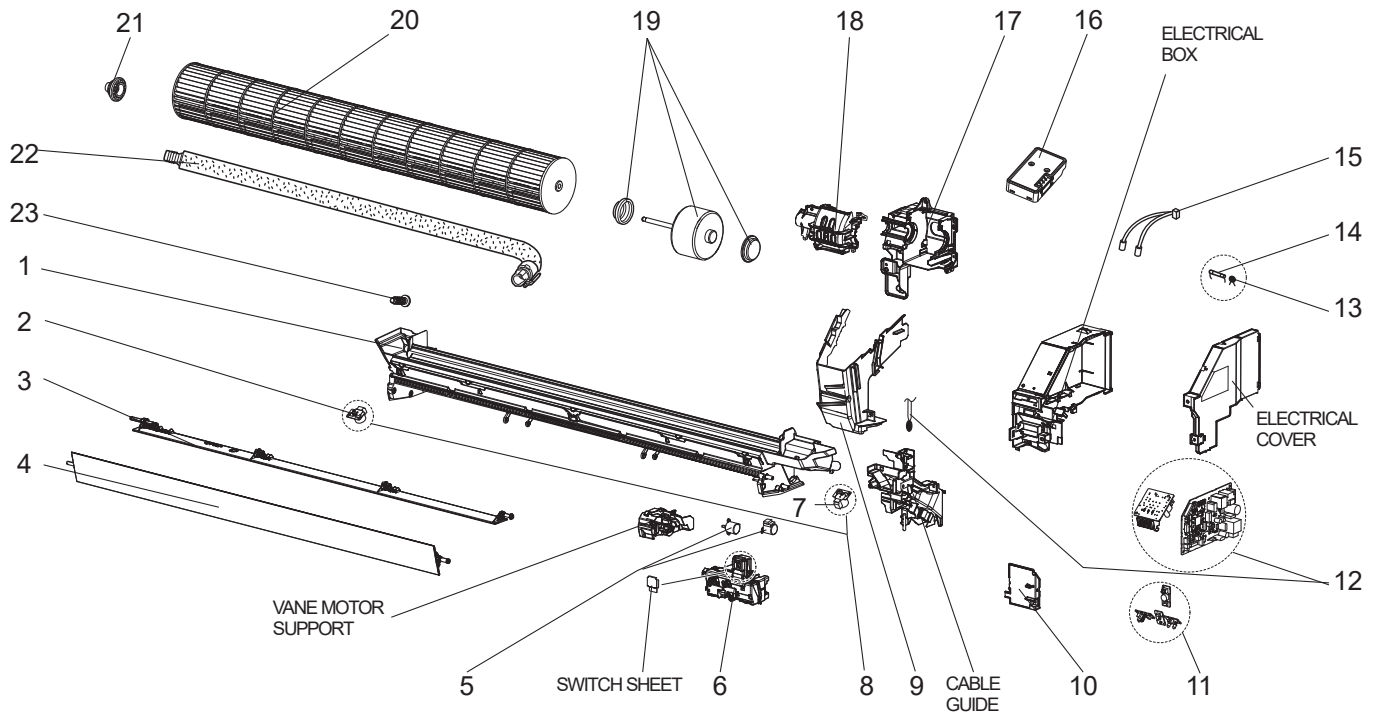
## 1-46. ACCESSORY AND REMOTE CONTROLLER

1. The part quantity below indicates the required number of pieces per unit.

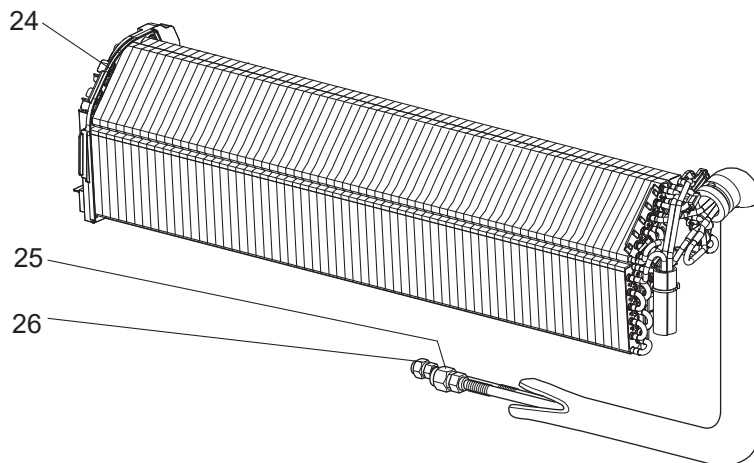
No.	Part No.	Part name	MSZ-AP60VGK - E4	MSZ-AP60VGK - ET4	MSZ-AP71VGK - E4	MSZ-AP71VGK - ET4	Symbol in Wiring Diagram	Remarks
12	E22 12M 426	REMOTE CONTROLLER	1	1	1	1		SH20C

**MSZ-AP60VGK - [E4], [ET4] MSZ-AP71VGK - [E4], [ET4]**

**1-47. INDOOR UNIT ELECTRICAL PARTS AND FUNCTIONAL PARTS**



**1-48. INDOOR UNIT HEAT EXCHANGER**



## 1-47. INDOOR UNIT ELECTRICAL PARTS AND FUNCTIONAL PARTS

1. The part quantity below indicates the required number of pieces per unit.

No.	Part No.	Part name	MSZ-AP60VGK - [E4]	MSZ-AP60VGK - [ET4]	MSZ-AP71VGK - [E4]	MSZ-AP71VGK - [ET4]	Symbol in Wiring Diagram	Remarks [Drawing No.]
1	E22 89F 235	NOZZLE ASSEMBLY	1	1	1	1		Full assembly except DRAIN HOSE
2	E22 82F 303	VANE MOTOR UNIT LEFT (VERTICAL)	1	1	1	1		Includes MV2
3	E22 89F 041	VANE (LOWER)	1	1	1	1		
4	E22 89F 040	VANE (UPPER)	1	1	1	1		
5	E22 A89 303	VANE MOTOR (HORIZONTAL)	2	2	2	2	MV1	UP & DOWN
6	E22 89F 095	DISPLAY AND RECEIVER P.C. BOARD HOLDER	1	1	1	1		
7	E22 84F 303	VANE MOTOR UNIT RIGHT (VERTICAL)	1	1	1	1		Includes MV2
8	E22 C32 303	VANE MOTOR (VERTICAL)	2	2	2	2	MV2	RIGHT & LEFT
9	E22 89F 541	WATER CUT	1	1				
9	E22 42G 541	WATER CUT			1	1		
10	E22 F28 784	V.A. CLAMP	1	1	1	1		
11	E22 2F0 329	DISPLAY P.C. BOARD	1	1	1	1		Includes RECEIVER P.C. BOARD and SWITCH/BUZZER P.C. BOARD
12	E22 2F0 452	ELECTRONIC CONTROL P.C. BOARD	1	1				Includes TERMINAL P.C. BOARD with TERMINAL BLOCK and ROOM TEMPERATURE THERMISTOR (RT11)
12	E22 2F1 452	ELECTRONIC CONTROL P.C. BOARD			1	1		Includes TERMINAL P.C. BOARD with TERMINAL BLOCK and ROOM TEMPERATURE THERMISTOR (RT11)
13	E22 K90 385	VARISTOR	1	1	1	1	NR11	
14	E22 42J 382	FUSE	1	1	1	1	F11	T3.15AL250V
15	E22 41G 307	INDOOR COIL THERMISTOR	1	1			RT12, RT13	
15	E22 R86 307	INDOOR COIL THERMISTOR			1	1	RT12, RT13	
16	E22 2F1 457	Wi-Fi INTERFACE MAC-577IF2-E	1	1	1	1		MAC-577IF2-E
17	E22 90F 333	MOTOR BED	1	1	1	1		
18	E22 F30 333	MOTOR BAND	1	1	1	1		
19	E22 89F 300	INDOOR FAN MOTOR	1	1	1	1	MF	RC0J56-□□ Includes FAN MOTOR RUBBER MOUNT (2 PCS/SET)
20	E22 F28 302	LINE FLOW FAN	1	1	1	1		
21	E22 A89 509	BEARING MOUNT ASSEMBLY	1	1	1	1		
22	E22 T20 702	DRAIN HOSE	1	1	1	1		
23	—	DRAIN CAP	1	1	1	1		[ SU26R611H01 ]

## 1-48. INDOOR UNIT HEAT EXCHANGER

1. The part quantity below indicates the required number of pieces per unit.

No.	Part No.	Part name	MSZ-AP60VGK - [E4]	MSZ-AP60VGK - [ET4]	MSZ-AP71VGK - [E4]	MSZ-AP71VGK - [ET4]	Symbol in Wiring Diagram	Remarks
24	E22 61H 620	INDOOR HEAT EXCHANGER	1	1				
24	E22 2F1 620	INDOOR HEAT EXCHANGER			1	1		
25	E22 155 666	UNION (GAS)	1	1	1	1		ø12.7
26	E22 151 667	UNION (LIQUID)	1	1	1	1		ø6.35

## 1-49. AIR CLEANING FILTER (V BLOCKING FILTER)

Every 3 months:

- Remove dirt by a vacuum cleaner.

**When dirt cannot be removed by vacuum cleaning:**

- Soak the filter and its frame in lukewarm water before rinsing it.
- After washing, dry it well in shade. Install all tabs of the air filter.

**Every year:**

- Replace it with a new air cleaning filter for best performance.

**NOTE 1:** Clean the filters regularly for best performance and to reduce power consumption.

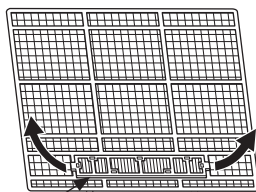
**NOTE 2:** Dirty filters cause condensation in the air conditioner which will contribute to the growth of fungi such as mold. It is therefore recommended to clean air filters every 2 weeks.

Model	Part No.
MSZ-AP25VG - <span>E3</span> , <span>ET3</span> MSZ-AP35VG - <span>E3</span> , <span>ET3</span> MSZ-AP42VG - <span>E3</span> , <span>ET3</span> MSZ-AP50VG - <span>E3</span> , <span>ET3</span> MSZ-AP25VGK - <span>E3</span> , <span>EN3</span> , <span>ET3</span> , <span>ER3</span> MSZ-AP35VGK - <span>E3</span> , <span>EN3</span> , <span>ET3</span> , <span>ER3</span> MSZ-AP42VGK - <span>E3</span> , <span>EN3</span> , <span>ET3</span> , <span>ER3</span> MSZ-AP50VGK - <span>E3</span> , <span>EN3</span> , <span>ET3</span> , <span>ER3</span>	MAC-2470FT-E
MSZ-AP60VG - <span>E3</span> , <span>ET3</span> , <span>E4</span> , <span>ET4</span> MSZ-AP71VG - <span>E3</span> , <span>ET3</span> , <span>E4</span> , <span>ET4</span> MSZ-AP60VGK - <span>E3</span> , <span>ET3</span> , <span>ER3</span> , <span>E4</span> , <span>ET4</span> MSZ-AP71VGK - <span>E3</span> , <span>ET3</span> , <span>ER3</span> , <span>E4</span> , <span>ET4</span>	MAC-2460FT-E

MSZ-AP25/35/42/50VG - E3, ET3

MSZ-AP25/35/42/50VGK - E3, EN3, ET3, ER3

Pull to remove from the air filter

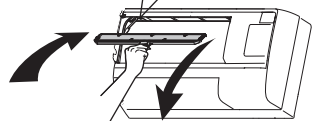
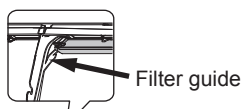


Air cleaning filter

MSZ-AP60/71VG - E3, ET3, E4, ET4

MSZ-AP60/71VGK - E3, ET3, ER3, E4, ET4

Push to install  
into the unit  
along the filter  
guide.



Pull to remove from the unit.

**2-1. AIR CLEANING FILTER  
(SILVER-IONIZED AIR PURIFIER FILTER)**

Every 3 months:

- Remove dirt by a vacuum cleaner.

When dirt cannot be removed by vacuum cleaning:

- Soak the filter and its frame in lukewarm water before rinsing it.
- After washing, dry it well in shade. Install all tabs of the air filter.

Every year:

- Replace it with a new air cleaning filter for best performance.

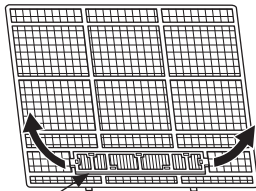
**NOTE 1:** Clean the filters regularly for best performance and to reduce power consumption.

**NOTE 2:** Dirty filters cause condensation in the air conditioner which will contribute to the growth of fungi such as mold. It is therefore recommended to clean air filters every 2 weeks.

Model	Part No.
MSZ-AP25VG MSZ-AP35VG MSZ-AP42VG MSZ-AP50VG MSZ-AP25VGK MSZ-AP35VGK MSZ-AP42VGK MSZ-AP50VGK	MAC-2370FT-E
MSZ-AP60VG MSZ-AP71VG MSZ-AP60VGK MSZ-AP71VGK	MAC-2360FT-E

**MSZ-AP25/35/42/50VG  
MSZ-AP25/35/42/50VGK**

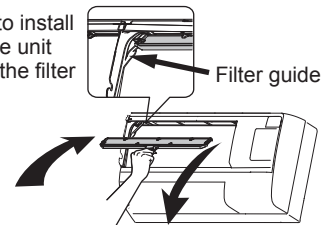
Pull to remove from the air filter



Air cleaning filter

**MSZ-AP60/71VG  
MSZ-AP60/71VGK**

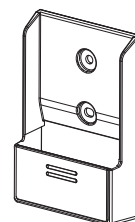
Push to install into the unit along the filter guide.



Pull to remove from the unit.

**2-2. REMOTE CONTROLLER HOLDER**

Model	Part No.
MSZ-AP25VG MSZ-AP35VG MSZ-AP42VG MSZ-AP50VG MSZ-AP25VGK MSZ-AP35VGK MSZ-AP42VGK MSZ-AP50VGK	MSZ-AP60VG MSZ-AP71VG MSZ-AP60VGK MSZ-AP71VGK MAC-1300RC-E



# **mitsubishi electric corporation**

HEAD OFFICE: TOKYO BUILDING, 2-7-3, MARUNOUCHI, CHIYODA-KU, TOKYO 100-8310, JAPAN

© Copyright 2017 MITSUBISHI ELECTRIC CORPORATION

Issued: Sep. 2023. No. OBB788 REVISED EDITION-G

Issued: Aug. 2021. No. OBB788 REVISED EDITION-F

Issued: Oct. 2020. No. OBB788 REVISED EDITION-E

Issued: Mar. 2020. No. OBB788 REVISED EDITION-D

Issued: Dec. 2019. No. OBB788 REVISED EDITION-C

Issued: Mar. 2019. No. OBB788 REVISED EDITION-B

Issued: May 2018. No. OBB788 REVISED EDITION-A

Published: Dec. 2017. No. OBB788

Made in Japan

Specifications are subject to change without notice.