

## OUTDOOR UNIT



**No. OBB789  
REVISED EDITION-G**

# PARTS CATALOG

### Models

**MUZ-AP25VG** - E1, ET1, E2, ET2, ER2, E3, ET3, ER3

**MUZ-AP35VG** - E1, ET1, E2, ET2, ER2, E3, ET3, ER3

**MUZ-AP42VG** - E1, ET1, E2, ET2, ER2

**MUZ-AP50VG** - E1, ET1, ER1, E2

**MUZ-AP60VG** - E1, ET1, ER1, E2, ET2, E3

**MUZ-AP71VG** - E1, ET1, ER1, E2

**MUZ-AP71VG2** - E1, ET1

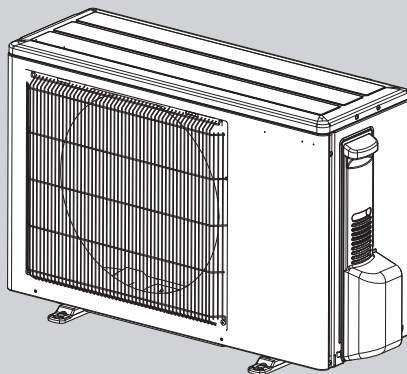
**MUZ-AP25VGH** - E1, E2, E3

**MUZ-AP35VGH** - E1, E2, E3

**MUZ-AP42VGH** - E1, E2

**MUZ-AP50VGH** - E1, E2

MUZ-AP25VG MUZ-AP25VGH  
 MUZ-AP35VG MUZ-AP35VGH  
 MUZ-AP42VG MUZ-AP42VGH



### CONTENTS

1. SERVICE PARTS LIST..... 2

**SERVICE MANUAL (OBH789)**

**Revision A:**

• MUZ-AP25/35/42VG- [E2], [ET2], [ER2], MUZ-AP25/35/42VGH- [E2] and MUZ-AP60/71VG- [E1], [ET1] have been added.

**Revision B:**

• Some descriptions have been modified.

**Revision C:**

• MUZ-AP50/60/71VG- [ER1] have been added.

**Revision D:**

• MUZ-AP25/35VG- [E3], [ET3] and MUZ-AP25/35VGH- [E3] have been added.

**Revision E:**

• Capillary tube has been added to the expansion valve assembly for MUZ-AP25/35VG- [E1], [ET1], [E2], [ET2], [ER2] and MUZ-AP25/35VGH- [E1], [E2] .

**Revision F:**

• MUZ-AP25/35VG- [ER3], MUZ-AP50/60/71VG- [E2] and MUZ-AP50VGH- [E2] have been added.

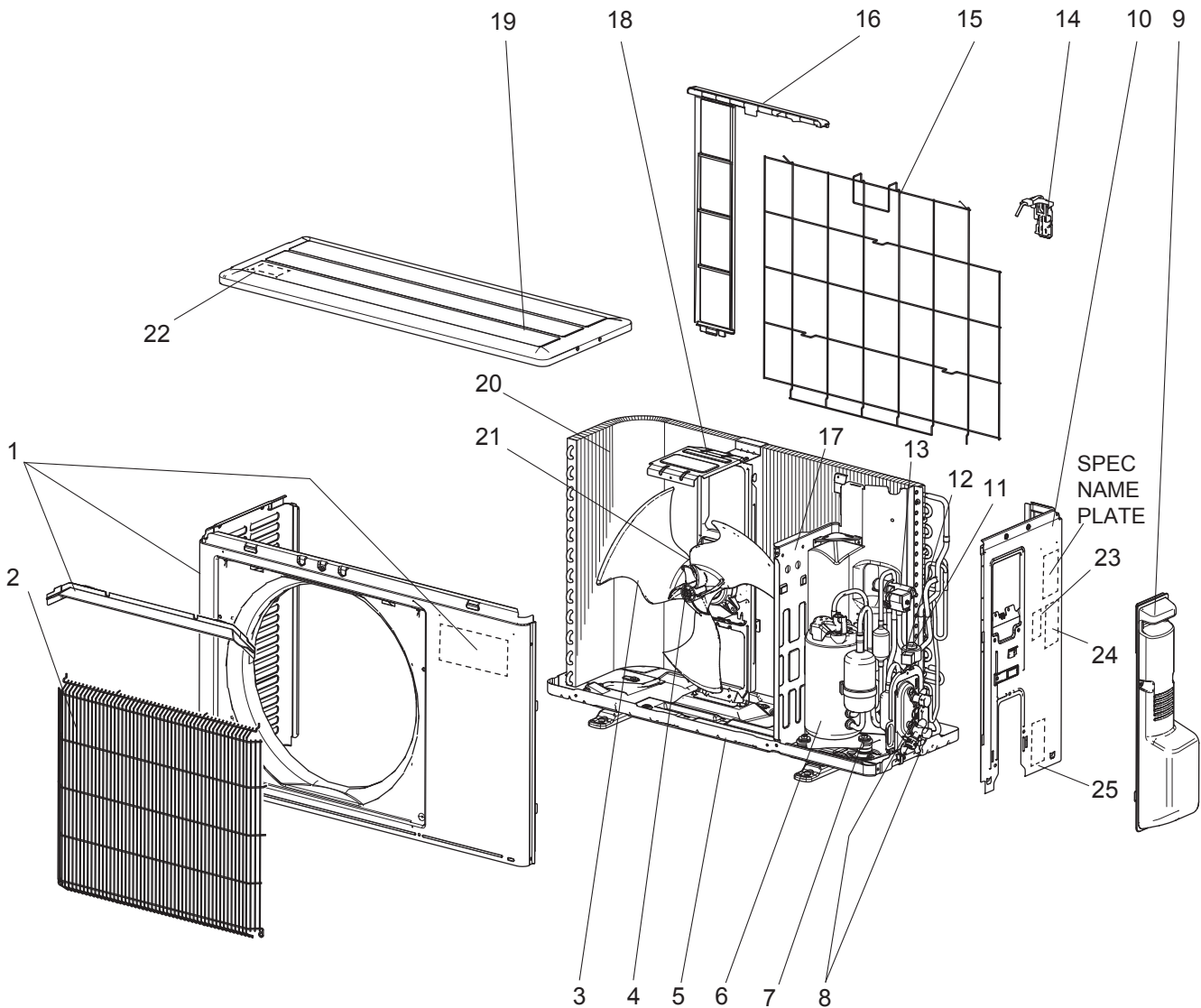
**Revision G:**

• MUZ-AP60VG-[ET2], [E3] MUZ-AP71VG2- [E1], [ET1] have been added.

# 1 SERVICE PARTS LIST

**MUZ-AP25VG -[E1], [ET1] MUZ-AP35VG -[E1], [ET1]**

## 1-1. OUTDOOR UNIT STRUCTURAL PARTS AND FUNCTIONAL PARTS

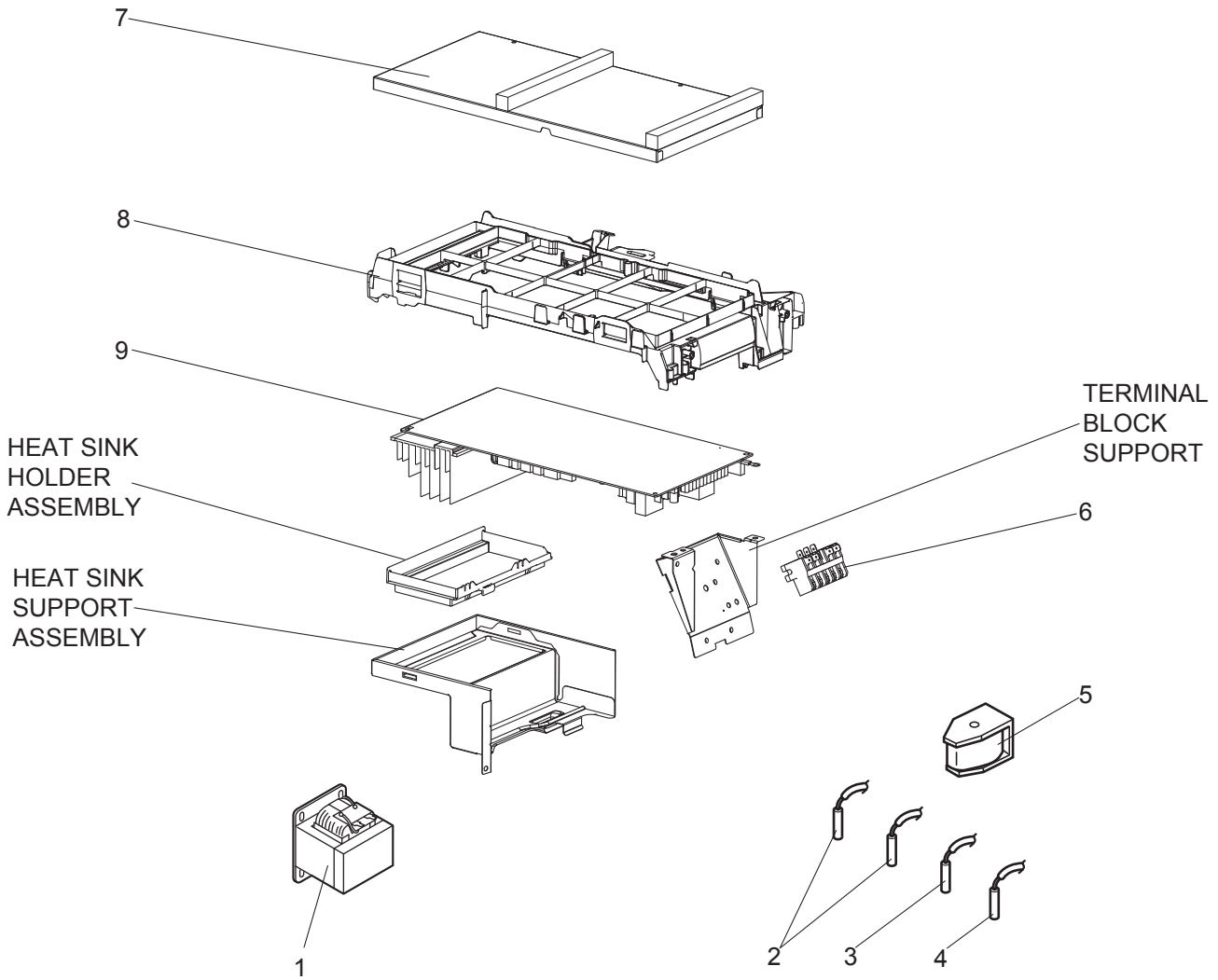


## 1-1. OUTDOOR UNIT STRUCTURAL PARTS AND FUNCTIONAL PARTS

1. The part quantity below indicates the required number of pieces per unit.
2. The circled No. indicates that the part is not shown in the figure.

No.	Part No.	Part Name	MUZ-AP25VG-[E1]	MUZ-AP25VG-[ET1]	MUZ-AP35VG-[E1]	MUZ-AP35VG-[ET1]	Symbol in Wiring Diagram	Remarks [Drawing No.]
1	G2W 004 050	CABINET	1	1	1	1		Includes ice guard, trade mark
2	G2W 001 063	WIRE GRILLE	1	1	1	1		
3	G2W 001 550	PROPELLER FAN	1	1	1	1		
4	G2W 001 753	PROPELLER FAN NUT	1	1	1	1		
5	G2W 001 055	BASE ASSEMBLY	1	1	1	1		
6	G2W 001 650	COMPRESSOR	1	1	1	1	MC	KVB073FYXMC
7	G2W 001 773	COMPRESSOR RUBBER SET	3	3	3	3		3 RUBBERS/SET
8	G2W 001 655	STOP VALVE ASSEMBLY	1	1	1	1		Gas: ø9.52 Liquid: ø6.35 Includes pipes
9	G2W 001 053	SERVICE PANEL ASSEMBLY	1	1	1	1		
10	G2W 001 060	BACK PANEL ASSEMBLY	1	1	1	1		Not including SPEC NAME PLATE or No. 23 to 25
11	G2W 003 668	EXPANSION VALVE ASSEMBLY	1	1	1	1		Includes capillary tube (2PCS: ø4.0×ø2.4×240, ø3.0×ø1.8×100)
12	G2W 001 362	EXPANSION VALVE COIL	1	1	1	1	LEV	
13	G2W 001 665	4-WAY VALVE	1	1	1	1		
14	————	THERMO HOLDER (AMBIENT)	1	1	1	1		[ DK25A972G03 ]
15	G2W 001 067	CONDENSER WIRE NET ASSEMBLY	1	1	1	1		
16	G2W 002 065	CONDENSER NET	1	1	1	1		
17	G2W 001 150	SEPARATOR	1	1	1	1		
18	G2W 001 154	MOTOR SUPPORT	1	1	1	1		
19	G2W 001 057	TOP PANEL ASSEMBLY	1	1	1	1		Not including WIRING DIAGRAM LABEL or No. 22
20	G2W 005 660	OUTDOOR HEAT EXCHANGER	1	1				
20	G2W 001 660	OUTDOOR HEAT EXCHANGER			1	1		
21	G2W 001 350	OUTDOOR FAN MOTOR	1	1	1	1	MF	RC0J50-□□
22	————	LABEL	1	1	1	1		[ JG79R840H02 ]
23	————	LABEL	1	1	1	1		[ JG79B901H01 ]
24	————	LABEL	1	1	1	1		[ JG79R837H01 ]
25	————	LABEL	1	1	1	1		[ DG79T472H01 ]
②6	G2W 001 371	COMPRESSOR LEAD WIRE ASSEMBLY	1	1	1	1		
②7	G2W 001 765	DRAIN SOCKET	1	1	1	1		

**MUZ-AP25VG -E1, ET1 MUZ-AP35VG -E1, ET1**  
**1-2. OUTDOOR UNIT ELECTRICAL PARTS**



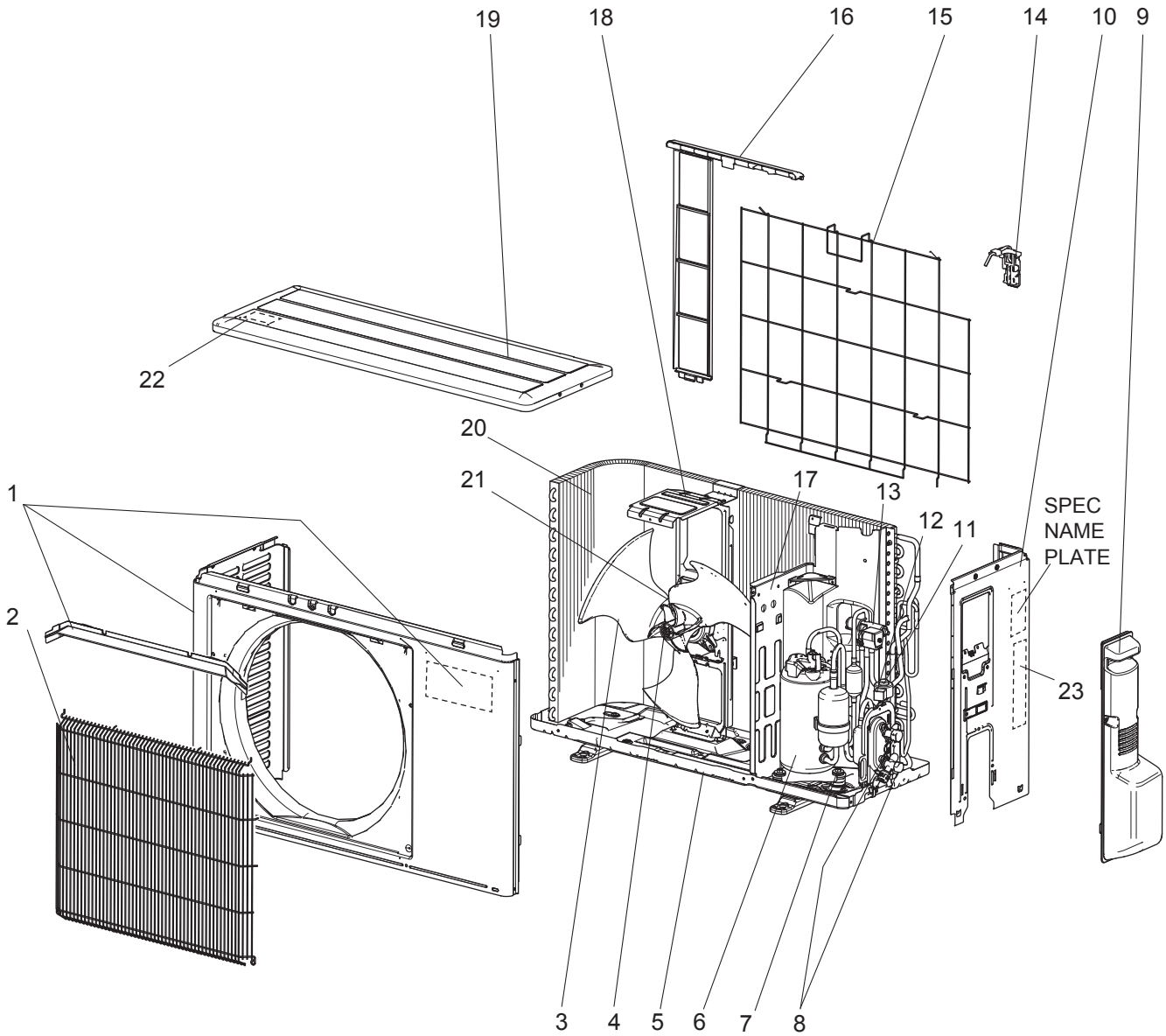
## 1-2. OUTDOOR UNIT ELECTRICAL PARTS

1. The part quantity below indicates the required number of pieces per unit.

No.	Part No.	Part Name	MUZ-AP25VG-[E1]	MUZ-AP25VG-[E1]	MUZ-AP35VG-[E1]	MUZ-AP35VG-[E1]	Symbol in Wiring Diagram	Remarks [Drawing No.]
1	G2W 001 359	REACTOR	1	1			L61	
1	G2W 002 359	REACTOR			1	1	L61	
2	G2W 001 353	THERMISTOR SET	1	1	1	1	RT61, RT62	DEFROST, DISCHARGE TEMPERATURE
3	G2W 001 355	AMBIENT TEMPERATURE THERMISTOR	1	1	1	1	RT65	
4	G2W 001 357	OUTDOOR HEAT EXCHANGER TEMPERATURE THERMISTOR	1	1	1	1	RT68	
5	G2W 001 365	R.V. COIL ASSEMBLY	1	1	1	1	21S4	
6	G2W 001 373	TERMINAL BLOCK	1	1	1	1	TB1	5P (S1, S2, S3, L, N)
7	————	P.C. BOARD COVER	1	1	1	1		[ DY02B869G01 ], [ SQ33C889H05 ] (2 PCS)
8	————	P.C. BOARD SUPPORT	1	1	1	1		[ DY25A804G02 ]
9	G2W 006 460	INVERTER P.C. BOARD ASSEMBLY	1	1				Includes heat sink and RT64
9	G2W 005 460	INVERTER P.C. BOARD ASSEMBLY			1	1		Includes heat sink and RT64

MUZ-AP25VG -[E2], [ET2], [ER2] MUZ-AP35VG -[E2], [ET2], [ER2]

1-3. OUTDOOR UNIT STRUCTURAL PARTS AND FUNCTIONAL PARTS

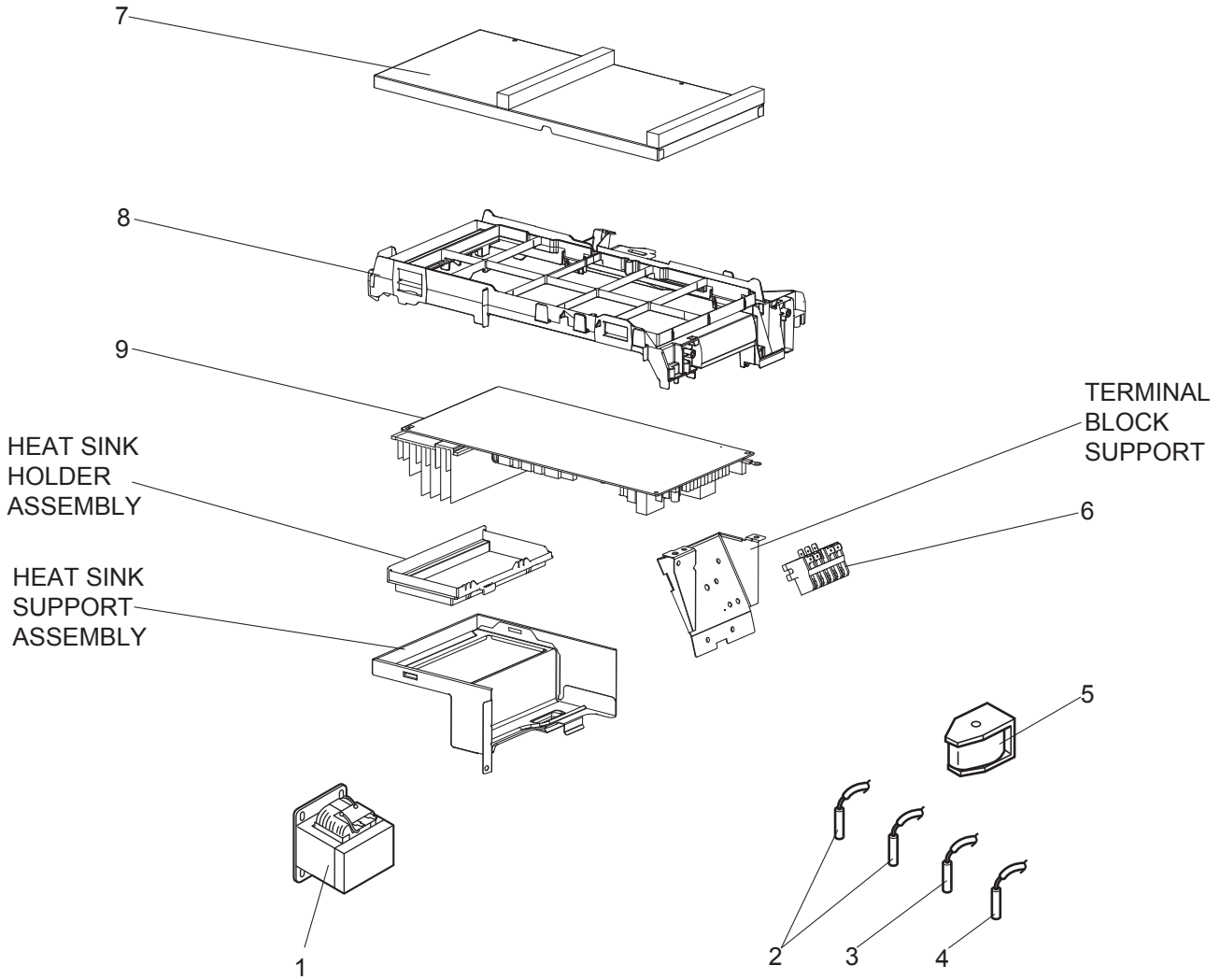


### 1-3. OUTDOOR UNIT STRUCTURAL PARTS AND FUNCTIONAL PARTS

1. The part quantity below indicates the required number of pieces per unit.
2. The circled No. indicates that the part is not shown in the figure.

No.	Part No.	Part Name	MUZ-AP25VG-[E2]	MUZ-AP25VG-[ET2]	MUZ-AP25VG-[ER2]	MUZ-AP35VG-[E2]	MUZ-AP35VG-[ET2]	MUZ-AP35VG-[ER2]	Symbol in Wiring Diagram	Remarks [Drawing No.]
1	G2W 004 050	CABINET	1	1	1	1	1	1		Includes ice guard, trade mark
2	G2W 001 063	WIRE GRILLE	1	1	1	1	1	1		
3	G2W 001 550	PROPELLER FAN	1	1	1	1	1	1		
4	G2W 001 753	PROPELLER FAN NUT	1	1	1	1	1	1		
5	G2W 001 055	BASE ASSEMBLY	1	1	1	1	1	1		
6	G2W 001 650	COMPRESSOR	1	1	1	1	1	1	MC	KVB073FYXMC
7	G2W 001 773	COMPRESSOR RUBBER SET	3	3	3	3	3	3		3 RUBBERS/SET
8	G2W 001 655	STOP VALVE ASSEMBLY	1	1	1	1	1	1		Gas: ø9.52 Liquid: ø6.35 Includes pipes
9	G2W 001 053	SERVICE PANEL ASSEMBLY	1	1	1	1	1	1		
10	G2W 001 060	BACK PANEL ASSEMBLY	1	1	1	1	1	1		Not including SPEC NAME PLATE or No. 23
11	G2W 003 668	EXPANSION VALVE ASSEMBLY	1	1	1	1	1	1		Includes capillary tube (2PCS: ø4.0×ø2.4×240, ø3.0×ø1.8×100)
12	G2W 001 362	EXPANSION VALVE COIL	1	1	1	1	1	1	LEV	
13	G2W 002 665	4-WAY VALVE	1	1	1	1	1	1		
14	————	THERMO HOLDER (AMBIENT)	1	1	1	1	1	1		[ DK25A972G03 ]
15	G2W 001 067	CONDENSER WIRE NET ASSEMBLY	1	1	1	1	1	1		
16	G2W 002 065	CONDENSER NET	1	1	1	1	1	1		
17	G2W 001 150	SEPARATOR	1	1	1	1	1	1		
18	G2W 001 154	MOTOR SUPPORT	1	1	1	1	1	1		
19	G2W 001 057	TOP PANEL ASSEMBLY	1	1	1	1	1	1		Not including WIRING DIAGRAM LABEL or No. 22
20	G2W 005 660	OUTDOOR HEAT EXCHANGER	1	1	1					
20	G2W 001 660	OUTDOOR HEAT EXCHANGER				1	1	1		
21	G2W 002 350	OUTDOOR FAN MOTOR	1	1	1	1	1	1	MF	RC0J55-□□
22	————	LABEL	1	1	1	1	1	1		[ JG79R840H02 ]
23	————	LABEL	1		1	1		1		[ DG79T490H01 ]
23	————	LABEL		1			1			[ DG79T490H02 ]
②④	G2W 001 371	COMPRESSOR LEAD WIRE ASSEMBLY	1	1	1	1	1	1		
②⑤	G2W 001 765	DRAIN SOCKET	1	1	1	1	1	1		

**MUZ-AP25VG -[E2], [ET2], [ER2] MUZ-AP35VG -[E2], [ET2], [ER2]**  
**1-4. OUTDOOR UNIT ELECTRICAL PARTS**





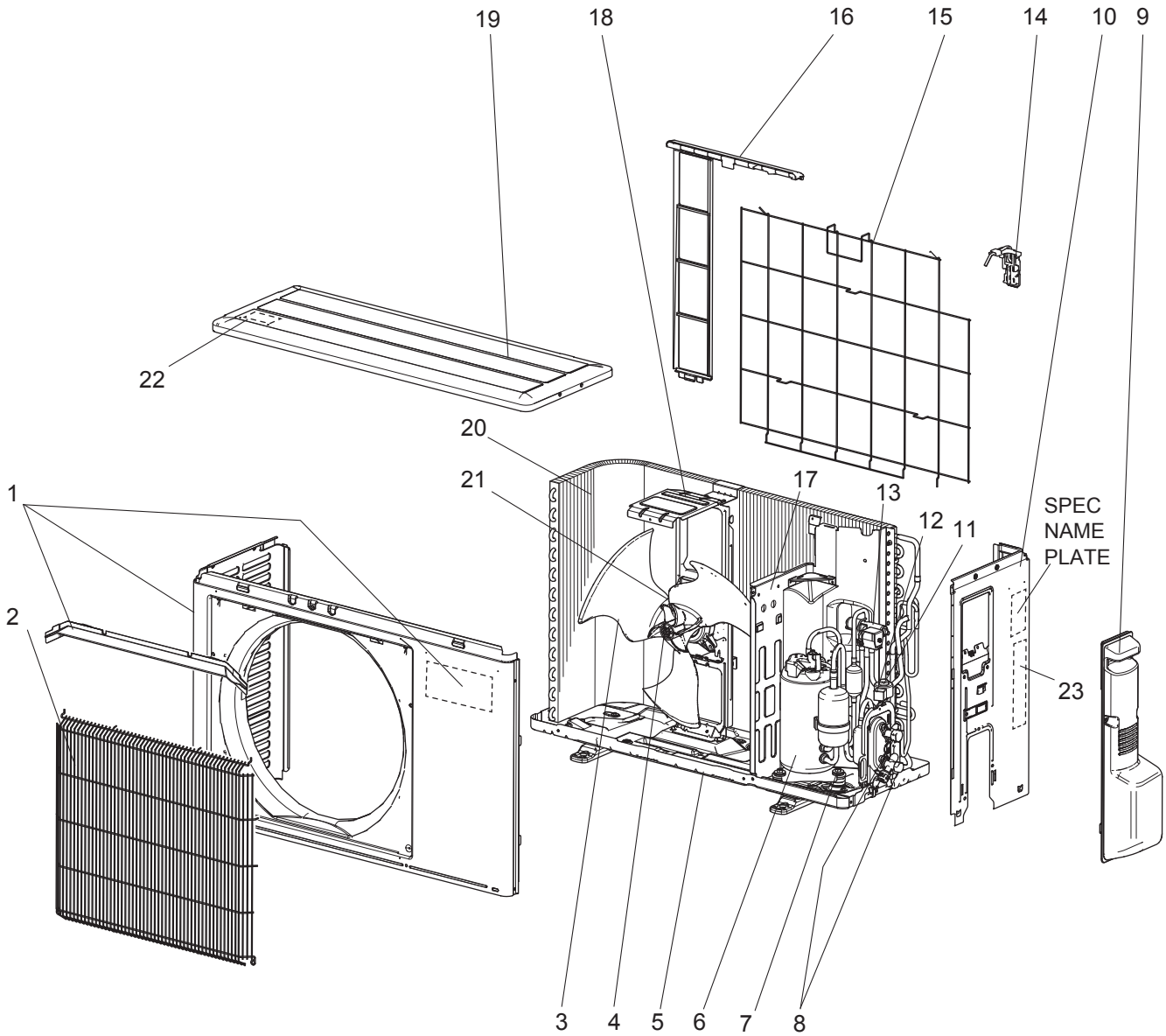
## 1-4. OUTDOOR UNIT ELECTRICAL PARTS

1. The part quantity below indicates the required number of pieces per unit.

No.	Part No.	Part Name	MUZ-AP25VG-[E2]	MUZ-AP25VG-[ET2]	MUZ-AP25VG-[ER2]	MUZ-AP35VG-[E2]	MUZ-AP35VG-[ET2]	MUZ-AP35VG-[ER2]	Symbol in Wiring Diagram	Remarks [Drawing No.]
1	G2W 001 359	REACTOR	1	1	1				L61	
1	G2W 002 359	REACTOR				1	1	1	L61	
2	G2W 001 353	THERMISTOR SET	1	1	1	1	1	1	RT61, RT62	DEFROST, DISCHARGE TEMPERATURE
3	G2W 001 355	AMBIENT TEMPERATURE THERMISTOR	1	1	1	1	1	1	RT65	
4	G2W 001 357	OUTDOOR HEAT EXCHANGER TEMPERATURE THERMISTOR	1	1	1	1	1	1	RT68	
5	G2W 003 365	R.V. COIL ASSEMBLY	1	1	1	1	1	1	21S4	
6	G2W 001 373	TERMINAL BLOCK	1	1	1	1	1	1	TB1	5P (S1, S2, S3, L, N)
7	————	P.C. BOARD COVER	1	1	1	1	1	1		[ DY02B869G01 ], [ SQ33C889H05 ] (2 PCS)
8	————	P.C. BOARD SUPPORT	1	1	1	1	1	1		[ DY25A804G02 ]
9	G2W 012 460	INVERTER P.C. BOARD ASSEMBLY	1	1	1					Includes heat sink and RT64
9	G2W 014 460	INVERTER P.C. BOARD ASSEMBLY				1	1	1		Includes heat sink and RT64

MUZ-AP25VG -E3, ET3, ER3 MUZ-AP35VG -E3, ET3, ER3

1-5. OUTDOOR UNIT STRUCTURAL PARTS AND FUNCTIONAL PARTS

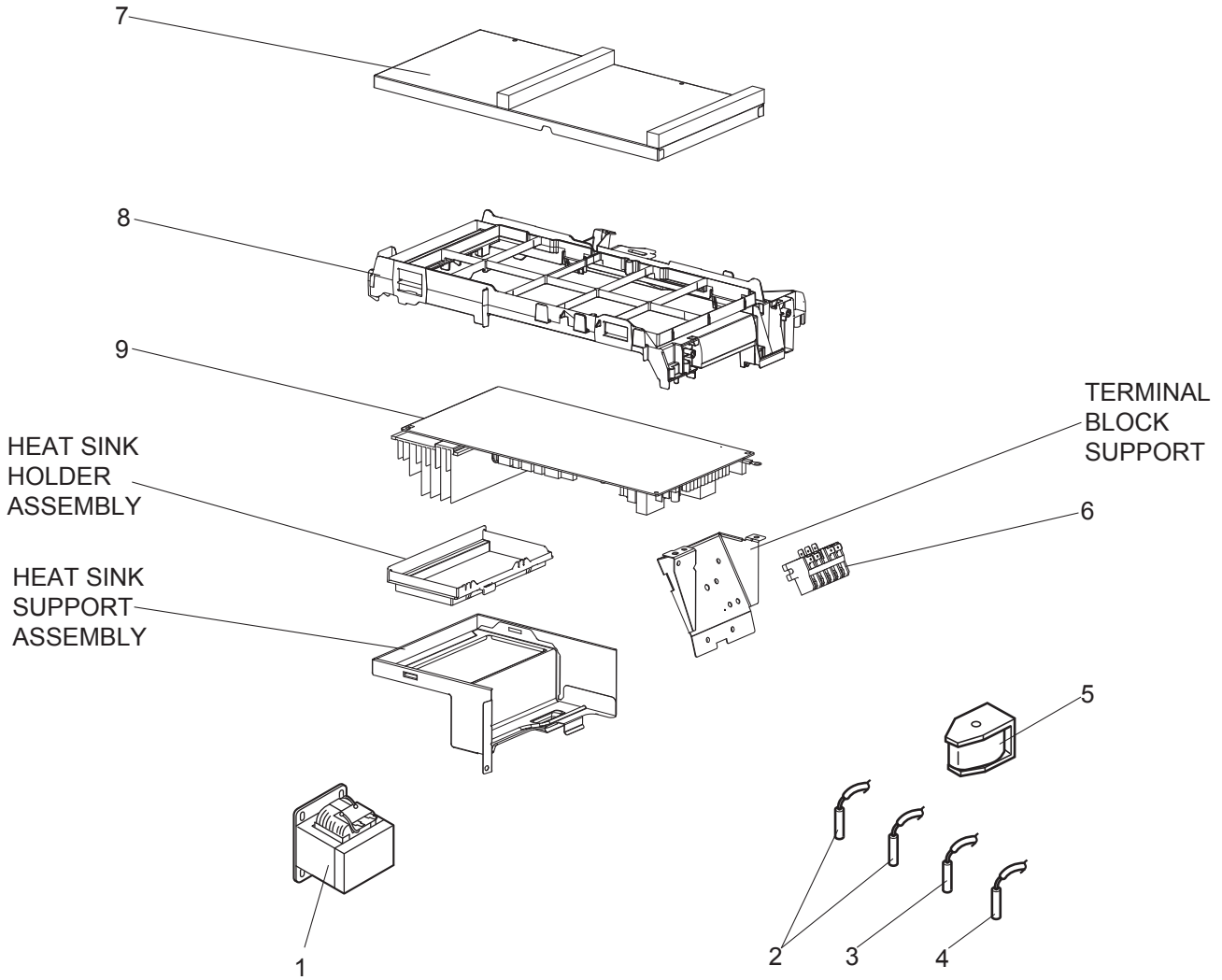


## 1-5. OUTDOOR UNIT STRUCTURAL PARTS AND FUNCTIONAL PARTS

1. The part quantity below indicates the required number of pieces per unit.
2. The circled No. indicates that the part is not shown in the figure.

No.	Part No.	Part Name	MUZ-AP25VG - [E3]	MUZ-AP25VG - [ET3]	MUZ-AP25VG - [ER3]	MUZ-AP35VG - [E3]	MUZ-AP35VG - [ET3]	MUZ-AP35VG - [ER3]	Symbol in Wiring Diagram	Remarks [Drawing No.]
1	G2W 004 050	CABINET	1	1	1	1	1	1		Includes ice guard, trade mark
2	G2W 001 063	WIRE GRILLE	1	1	1	1	1	1		
3	G2W 001 550	PROPELLER FAN	1	1	1	1	1	1		
4	G2W 001 753	PROPELLER FAN NUT	1	1	1	1	1	1		
5	G2W 001 055	BASE ASSEMBLY	1	1	1	1	1	1		
6	G2W 006 650	COMPRESSOR	1	1	1	1	1	1	MC	KVB073FYGMC
7	G2W 001 773	COMPRESSOR RUBBER SET	3	3	3	3	3	3		3 RUBBERS/SET
8	G2W 001 655	STOP VALVE ASSEMBLY	1	1	1	1	1	1		Gas: ø9.52 Liquid: ø6.35 Includes pipes
9	G2W 001 053	SERVICE PANEL ASSEMBLY	1	1	1	1	1	1		
10	G2W 001 060	BACK PANEL ASSEMBLY	1	1	1	1	1	1		Not including SPEC NAME PLATE or No. 23
11	G2W 003 668	EXPANSION VALVE ASSEMBLY	1	1	1	1	1	1		Includes capillary tube (2PCS: ø4.0×ø2.4×240, ø3.0×ø1.8×100)
12	G2W 001 362	EXPANSION VALVE COIL	1	1	1	1	1	1	LEV	
13	G2W 002 665	4-WAY VALVE	1	1	1	1	1	1		
14	————	THERMO HOLDER (AMBIENT)	1	1	1	1	1	1		[ DK25A972G03 ]
15	G2W 001 067	CONDENSER WIRE NET ASSEMBLY	1	1	1	1	1	1		
16	G2W 002 065	CONDENSER NET	1	1	1	1	1	1		
17	G2W 001 150	SEPARATOR	1	1	1	1	1	1		
18	G2W 001 154	MOTOR SUPPORT	1	1	1	1	1	1		
19	G2W 001 057	TOP PANEL ASSEMBLY	1	1	1	1	1	1		Not including WIRING DIAGRAM LABEL or No. 22
20	G2W 005 660	OUTDOOR HEAT EXCHANGER	1	1	1					
20	G2W 001 660	OUTDOOR HEAT EXCHANGER				1	1	1		
21	G2W 002 350	OUTDOOR FAN MOTOR	1	1	1	1	1	1	MF	RC0J55-□□
22	————	LABEL	1	1	1	1	1	1		[ JG79R840H02 ]
23	————	LABEL	1		1	1		1		[ DG79T490H01 ]
23	————	LABEL		1			1			[ DG79T490H02 ]
②④	G2W 005 371	COMPRESSOR LEAD WIRE ASSEMBLY	1	1	1	1	1	1		
②⑤	G2W 001 765	DRAIN SOCKET	1	1	1	1	1	1		

**MUZ-AP25VG - [E3], [ET3], [ER3] MUZ-AP35VG - [E3], [ET3], [ER3]**  
**1-6. OUTDOOR UNIT ELECTRICAL PARTS**



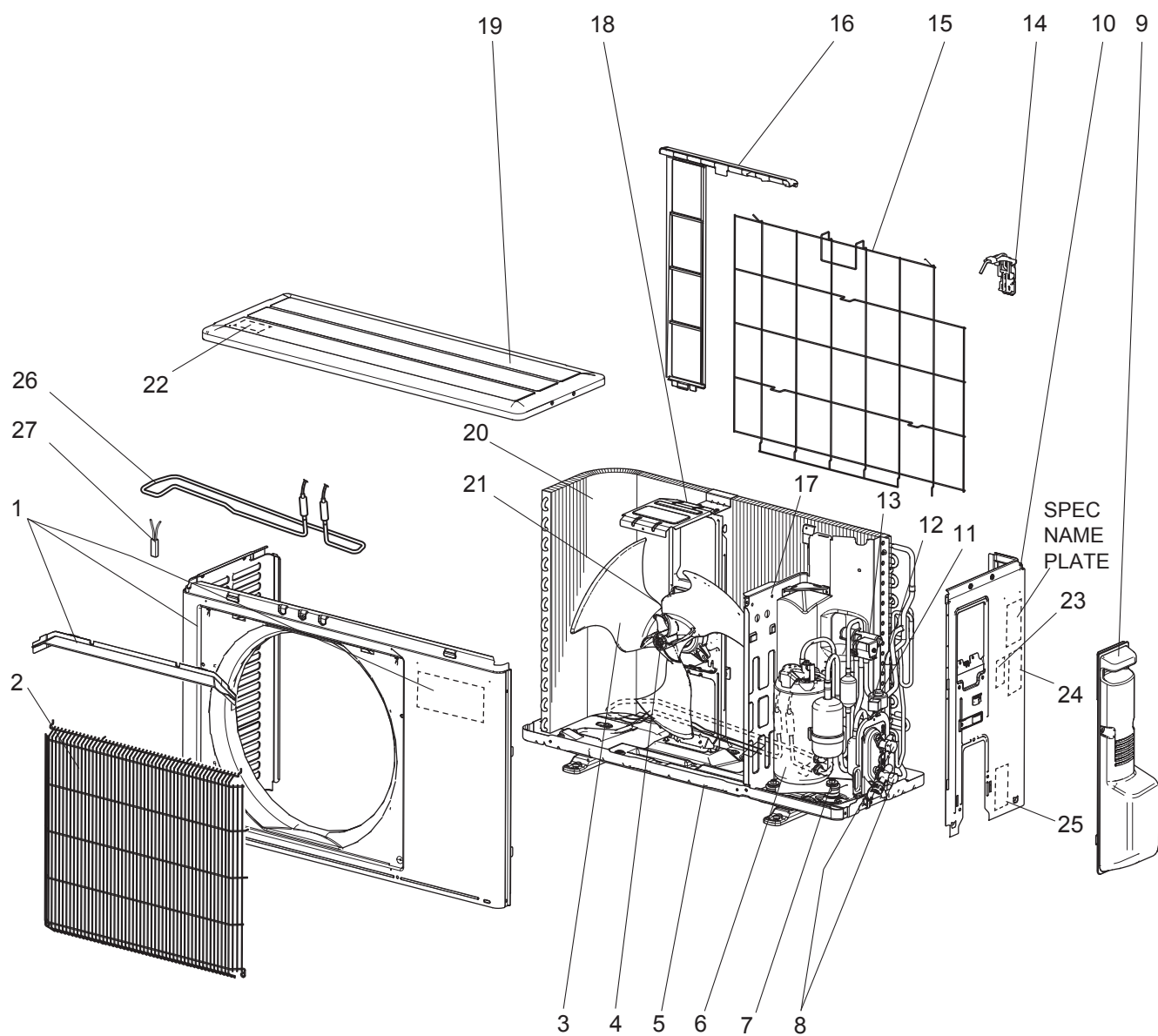
## 1-6. OUTDOOR UNIT ELECTRICAL PARTS

1. The part quantity below indicates the required number of pieces per unit.

No.	Part No.	Part Name	MUZ-AP25VG - [E3]	MUZ-AP25VG - [ET3]	MUZ-AP25VG - [ER3]	MUZ-AP35VG - [E3]	MUZ-AP35VG - [ET3]	MUZ-AP35VG - [ER3]	Symbol in Wiring Diagram	Remarks [Drawing No.]
1	G2W 001 359	REACTOR	1	1	1				L61	
1	G2W 002 359	REACTOR				1	1	1	L61	
2	G2W 001 353	THERMISTOR SET	1	1	1	1	1	1	RT61, RT62	DEFROST, DISCHARGE TEMPERATURE
3	G2W 001 355	AMBIENT TEMPERATURE THERMISTOR	1	1	1	1	1	1	RT65	
4	G2W 001 357	OUTDOOR HEAT EXCHANGER TEMPERATURE THERMISTOR	1	1	1	1	1	1	RT68	
5	G2W 003 365	R.V. COIL ASSEMBLY	1	1	1	1	1	1	21S4	
6	G2W 001 373	TERMINAL BLOCK	1	1	1	1	1	1	TB1	5P (S1, S2, S3, L, N)
7	————	P.C. BOARD COVER	1	1	1	1	1	1		[ DY02B869G01 ], [ SQ33C889H05 ] (2 PCS)
8	————	P.C. BOARD SUPPORT	1	1	1	1	1	1		[ DY25A804G02 ]
9	G2W 018 460	INVERTER P.C. BOARD ASSEMBLY	1	1	1					Includes heat sink and RT64
9	G2W 019 460	INVERTER P.C. BOARD ASSEMBLY				1	1	1		Includes heat sink and RT64

MUZ-AP25VGH -E1 MUZ-AP35VGH -E1

1-7. OUTDOOR UNIT STRUCTURAL PARTS AND FUNCTIONAL PARTS

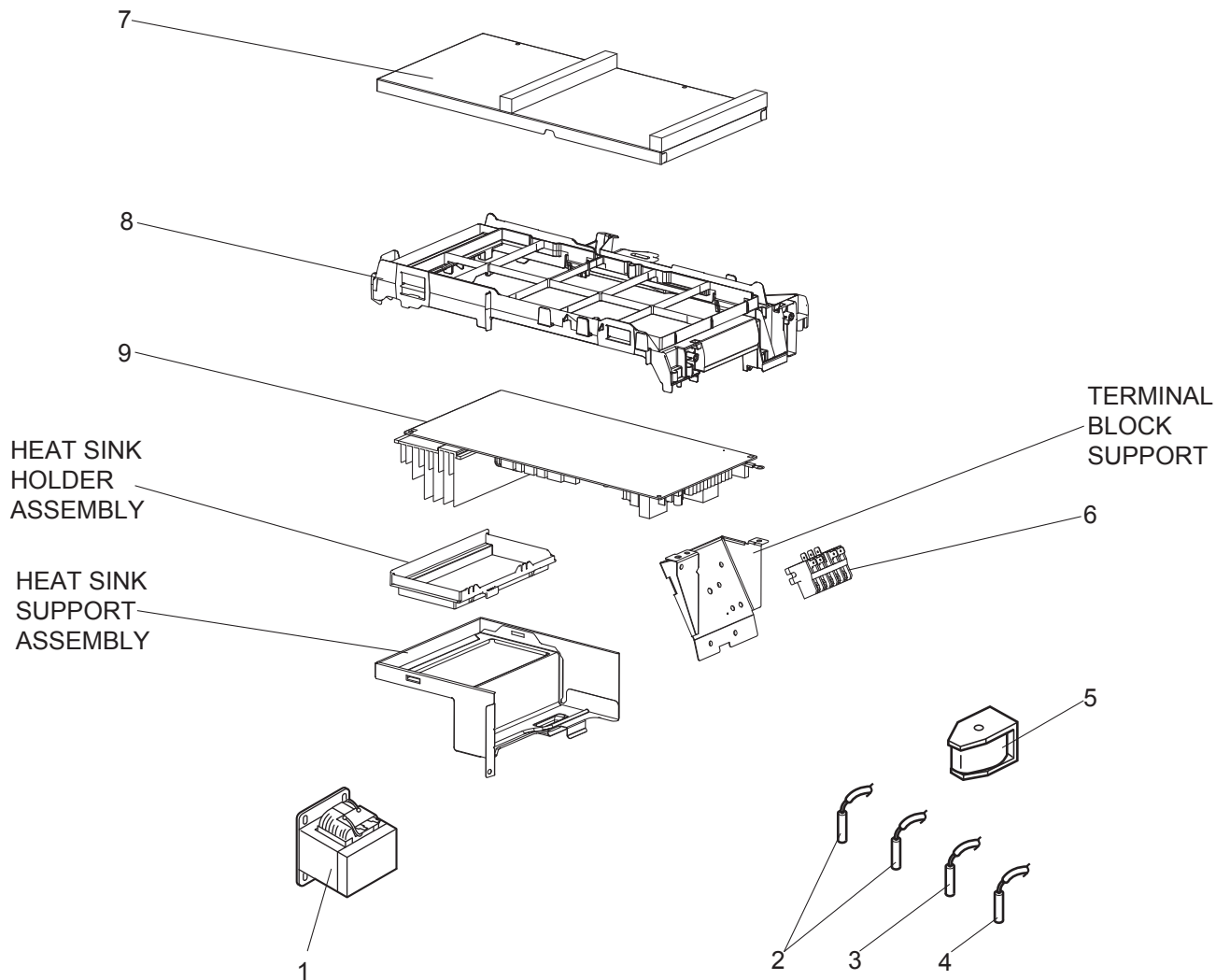


## 1-7. OUTDOOR UNIT STRUCTURAL PARTS AND FUNCTIONAL PARTS

1. The part quantity below indicates the required number of pieces per unit.
2. The circled No. indicates that the part is not shown in the figure.

No.	Part No.	Part Name	MUZ-AP25VGH - [ET]	MUZ-AP35VGH - [ET]	Symbol in Wiring Diagram	Remarks [Drawing No.]
1	G2W 004 050	CABINET	1	1		Includes ice guard, trade mark
2	G2W 001 063	WIRE GRILLE	1	1		
3	G2W 001 550	PROPELLER FAN	1	1		
4	G2W 001 753	PROPELLER FAN NUT	1	1		
5	G2W 002 055	BASE ASSEMBLY	1	1		
6	G2W 001 650	COMPRESSOR	1	1	MC	KVB073FYXMC
7	G2W 001 773	COMPRESSOR RUBBER SET	3	3		3 RUBBERS/SET
8	G2W 001 655	STOP VALVE ASSEMBLY	1	1		Gas: ø9.52 Liquid: ø6.35 Includes pipes
9	G2W 001 053	SERVICE PANEL ASSEMBLY	1	1		
10	G2W 001 060	BACK PANEL ASSEMBLY	1	1		Not including SPEC NAME PLATE or No. 23 to 25
11	G2W 003 668	EXPANSION VALVE ASSEMBLY	1	1		Includes capillary tube (2PCS: ø4.0×ø2.4×240, ø3.0×ø1.8×100)
12	G2W 001 362	EXPANSION VALVE COIL	1	1	LEV	
13	G2W 001 665	4-WAY VALVE	1	1		
14	————	THERMO HOLDER (AMBIENT)	1	1		[ DK25A972G03 ]
15	G2W 001 067	CONDENSER WIRE NET ASSEMBLY	1	1		
16	G2W 002 065	CONDENSER NET	1	1		
17	G2W 002 150	SEPARATOR	1	1		
18	G2W 001 154	MOTOR SUPPORT	1	1		
19	G2W 001 057	TOP PANEL ASSEMBLY	1	1		Not including WIRING DIAGRAM LABEL or No. 22
20	G2W 005 660	OUTDOOR HEAT EXCHANGER	1			
20	G2W 001 660	OUTDOOR HEAT EXCHANGER		1		
21	G2W 001 350	OUTDOOR FAN MOTOR	1	1	MF	RC0J50-□□
22	————	LABEL	1	1		[ JG79R840H02 ]
23	————	LABEL	1	1		[ JG79B901H01 ]
24	————	LABEL	1	1		[ JG79R837H01 ]
25	————	LABEL	1	1		[ DG79T472H01 ]
26	G2W 001 368	DEFROST HEATER	1	1	H	
27	G2W 001 377	HEATER PROTECTOR ASSEMBLY	1	1	26H	
②8	G2W 001 371	COMPRESSOR LEAD WIRE ASSEMBLY	1	1		

**MUZ-AP25VGH -E1 MUZ-AP35VGH -E1**  
**1-8. OUTDOOR UNIT ELECTRICAL PARTS**





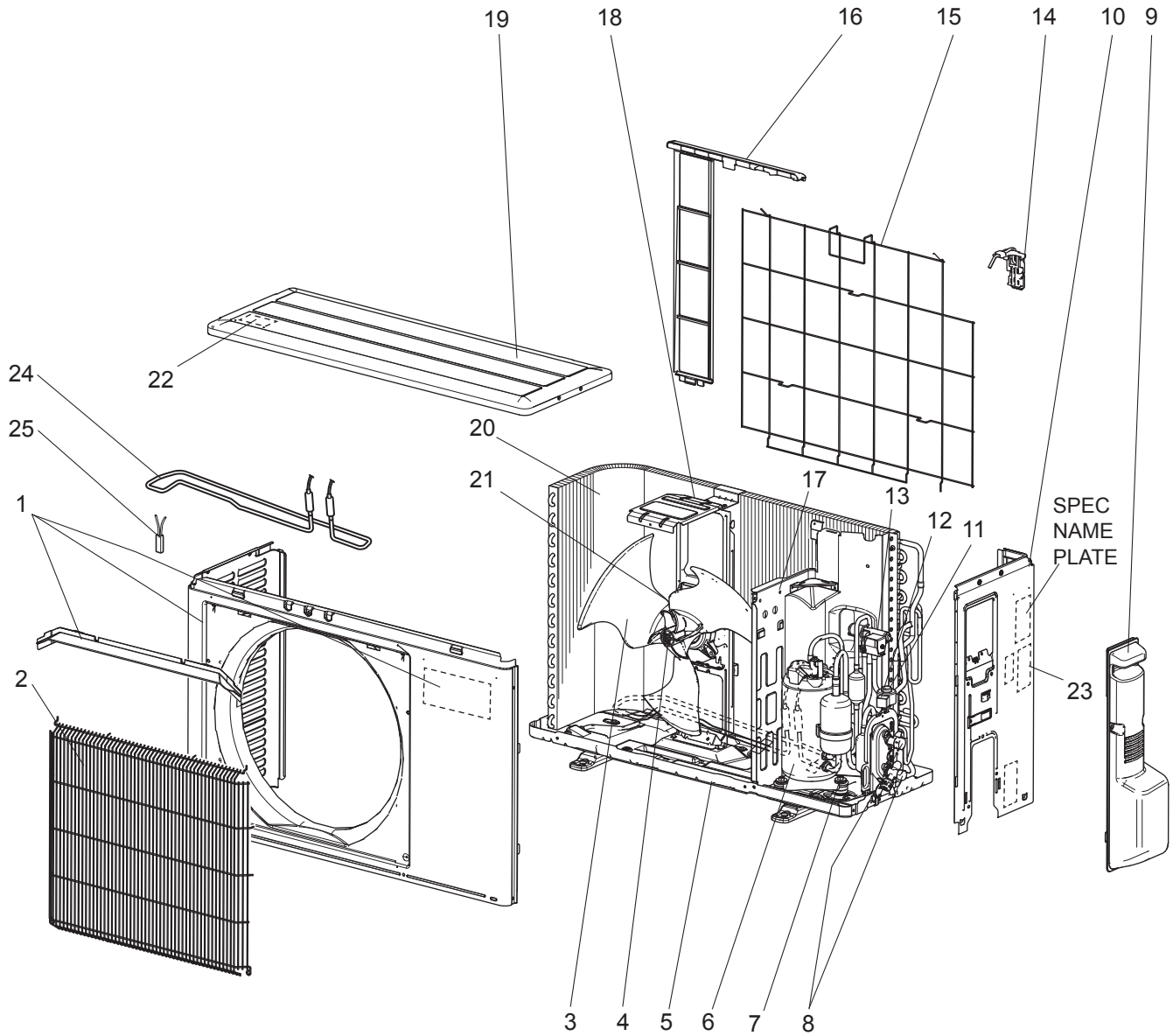
## 1-8. OUTDOOR UNIT ELECTRICAL PARTS

1. The part quantity below indicates the required number of pieces per unit.

No.	Part No.	Part Name	MUZ-AP25VGH - [ET]	MUZ-AP35VGH - [ET]	Symbol in Wiring Diagram	Remarks [Drawing No.]
1	G2W 001 359	REACTOR	1		L61	
1	G2W 002 359	REACTOR		1	L61	
2	G2W 001 353	THERMISTOR SET	1	1	RT61, RT62	DEFROST, DISCHARGE TEMPERATURE
3	G2W 001 355	AMBIENT TEMPERATURE THERMISTOR	1	1	RT65	
4	G2W 001 357	OUTDOOR HEAT EXCHANGER TEMPERATURE THERMISTOR	1	1	RT68	
5	G2W 001 365	R.V. COIL ASSEMBLY	1	1	21S4	
6	G2W 001 373	TERMINAL BLOCK	1	1	TB1	5P (S1, S2, S3, L, N)
7	————	P.C. BOARD COVER	1	1		[ DY02B869G01 ], [ SQ33C889H05 ] (2 PCS)
8	————	P.C. BOARD SUPPORT	1	1		[ DY25A804G02 ]
9	G2W 003 460	INVERTER P.C. BOARD ASSEMBLY	1			Includes heat sink and RT64
9	G2W 002 460	INVERTER P.C. BOARD ASSEMBLY		1		Includes heat sink and RT64

MUZ-AP25VGH -E2 MUZ-AP35VGH -E2

### 1-9. OUTDOOR UNIT STRUCTURAL PARTS AND FUNCTIONAL PARTS

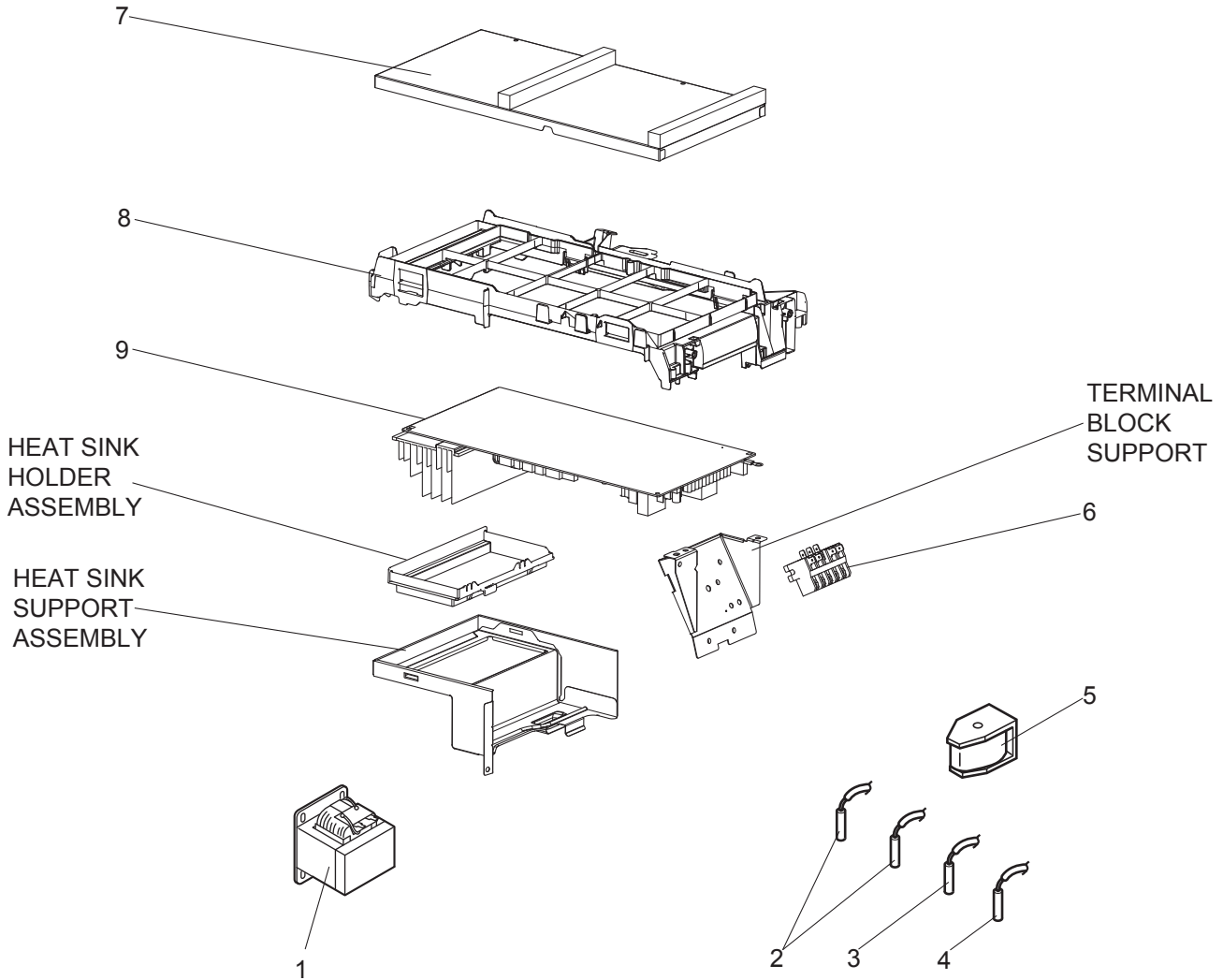


## 1-9. OUTDOOR UNIT STRUCTURAL PARTS AND FUNCTIONAL PARTS

1. The part quantity below indicates the required number of pieces per unit.
2. The circled No. indicates that the part is not shown in the figure.

No.	Part No.	Part Name	MUZ-AP25VGH - <sup>E2</sup>	MUZ-AP35VGH - <sup>E2</sup>	Symbol in Wiring Diagram	Remarks [Drawing No.]
1	G2W 004 050	CABINET	1	1		Includes ice guard, trade mark
2	G2W 001 063	WIRE GRILLE	1	1		
3	G2W 001 550	PROPELLER FAN	1	1		
4	G2W 001 753	PROPELLER FAN NUT	1	1		
5	G2W 002 055	BASE ASSEMBLY	1	1		
6	G2W 001 650	COMPRESSOR	1	1	MC	KVB073FYXMC
7	G2W 001 773	COMPRESSOR RUBBER SET	3	3		3 RUBBERS/SET
8	G2W 001 655	STOP VALVE ASSEMBLY	1	1		Gas: $\phi 9.52$ Liquid: $\phi 6.35$ Includes pipes
9	G2W 001 053	SERVICE PANEL ASSEMBLY	1	1		
10	G2W 001 060	BACK PANEL ASSEMBLY	1	1		Not including SPEC NAME PLATE or No. 23
11	G2W 003 668	EXPANSION VALVE ASSEMBLY	1	1		Includes capillary tube (2PCS: $\phi 4.0 \times \phi 2.4 \times 240$ , $\phi 3.0 \times \phi 1.8 \times 100$ )
12	G2W 001 362	EXPANSION VALVE COIL	1	1	LEV	
13	G2W 002 665	4-WAY VALVE	1	1		
14	————	THERMO HOLDER (AMBIENT)	1	1		[ DK25A972G03 ]
15	G2W 001 067	CONDENSER WIRE NET ASSEMBLY	1	1		
16	G2W 002 065	CONDENSER NET	1	1		
17	G2W 002 150	SEPARATOR	1	1		
18	G2W 001 154	MOTOR SUPPORT	1	1		
19	G2W 001 057	TOP PANEL ASSEMBLY	1	1		Not including WIRING DIAGRAM LABEL or No. 22
20	G2W 005 660	OUTDOOR HEAT EXCHANGER	1			
20	G2W 001 660	OUTDOOR HEAT EXCHANGER		1		
21	G2W 002 350	OUTDOOR FAN MOTOR	1	1	MF	RC0J55-□□
22	————	LABEL	1	1		[ JG79R840H02 ]
23	————	LABEL	1	1		[ DG79T490H01 ]
24	G2W 001 368	DEFROST HEATER	1	1	H	
25	G2W 001 377	HEATER PROTECTOR ASSEMBLY	1	1	26H	
②6	G2W 001 371	COMPRESSOR LEAD WIRE ASSEMBLY	1	1		

**MUZ-AP25VGH -E2 MUZ-AP35VGH -E2**  
**1-10. OUTDOOR UNIT ELECTRICAL PARTS**



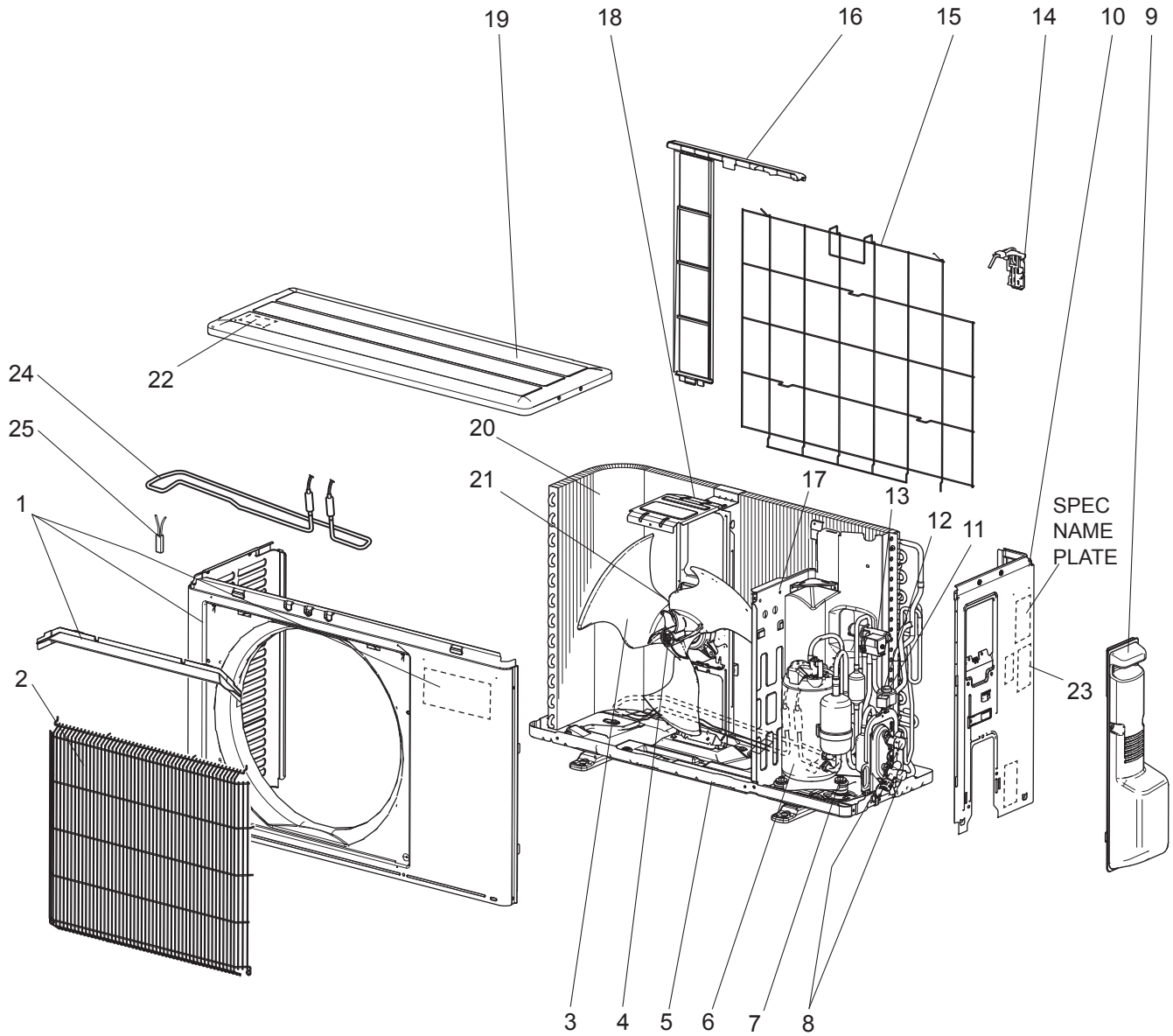
## 1-10. OUTDOOR UNIT ELECTRICAL PARTS

1. The part quantity below indicates the required number of pieces per unit.

No.	Part No.	Part Name	MUZ-AP25VGH - [E2]	MUZ-AP35VGH - [E2]	Symbol in Wiring Diagram	Remarks [Drawing No.]
1	G2W 001 359	REACTOR	1		L61	
1	G2W 002 359	REACTOR		1	L61	
2	G2W 001 353	THERMISTOR SET	1	1	RT61, RT62	DEFROST, DISCHARGE TEMPERATURE
3	G2W 001 355	AMBIENT TEMPERATURE THERMISTOR	1	1	RT65	
4	G2W 001 357	OUTDOOR HEAT EXCHANGER TEMPERATURE THERMISTOR	1	1	RT68	
5	G2W 003 365	R.V. COIL ASSEMBLY	1	1	21S4	
6	G2W 001 373	TERMINAL BLOCK	1	1	TB1	5P (S1, S2, S3, L, N)
7	————	P.C. BOARD COVER	1	1		[ DY02B869G01 ], [ SQ33C889H05 ] (2 PCS)
8	————	P.C. BOARD SUPPORT	1	1		[ DY25A804G02 ]
9	G2W 013 460	INVERTER P.C. BOARD ASSEMBLY	1			Includes heat sink and RT64
9	G2W 015 460	INVERTER P.C. BOARD ASSEMBLY		1		Includes heat sink and RT64

MUZ-AP25VGH -E3 MUZ-AP35VGH -E3

1-11. OUTDOOR UNIT STRUCTURAL PARTS AND FUNCTIONAL PARTS



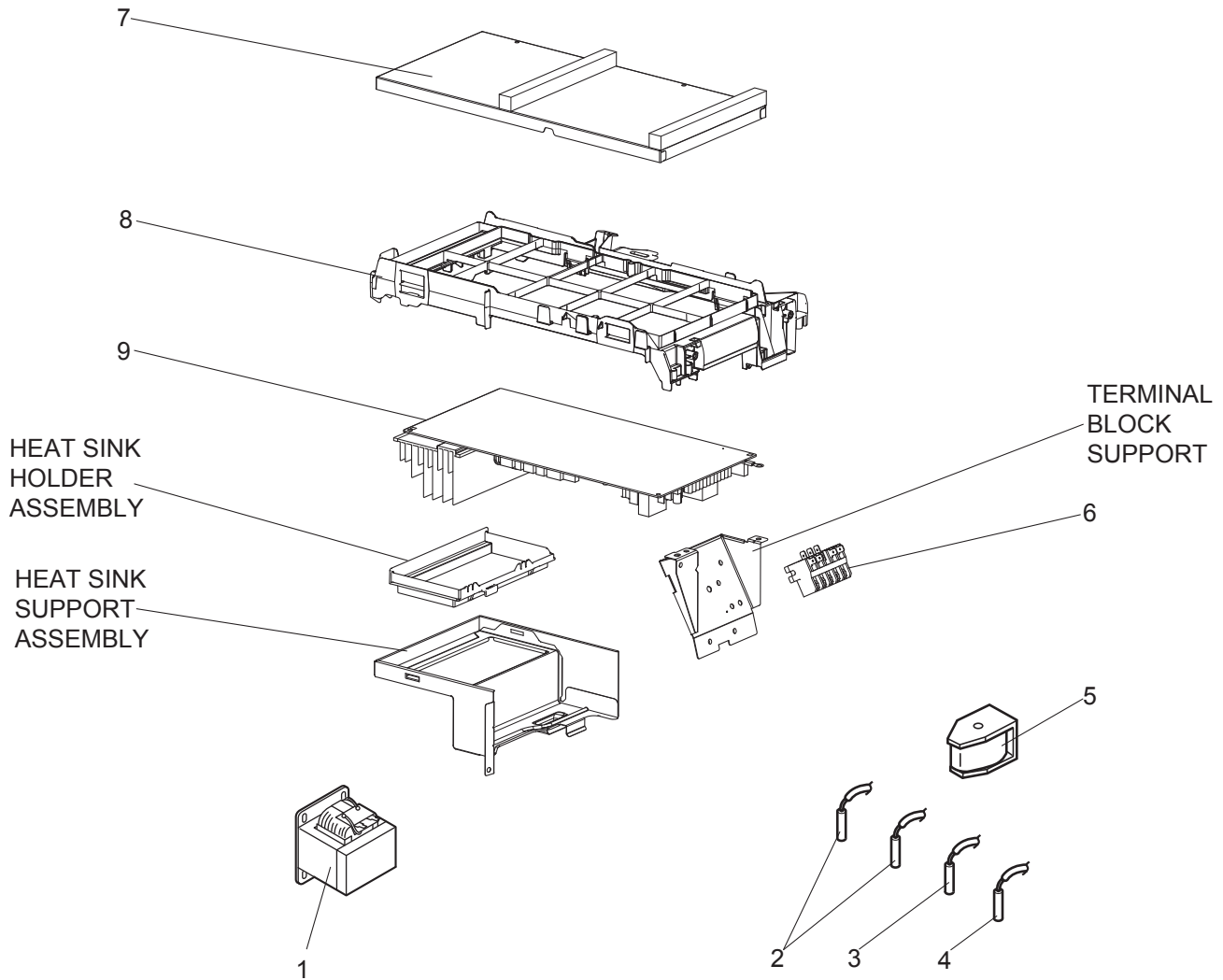
## 1-11. OUTDOOR UNIT STRUCTURAL PARTS AND FUNCTIONAL PARTS

1. The part quantity below indicates the required number of pieces per unit.
2. The circled No. indicates that the part is not shown in the figure.

No.	Part No.	Part Name	MUZ-AP25VGH - <sup>E3</sup>	MUZ-AP35VGH - <sup>E3</sup>	Symbol in Wiring Diagram	Remarks [Drawing No.]
1	G2W 004 050	CABINET	1	1		Includes ice guard, trade mark
2	G2W 001 063	WIRE GRILLE	1	1		
3	G2W 001 550	PROPELLER FAN	1	1		
4	G2W 001 753	PROPELLER FAN NUT	1	1		
5	G2W 002 055	BASE ASSEMBLY	1	1		
6	G2W 006 650	COMPRESSOR	1	1	MC	KVB073FYGMC
7	G2W 001 773	COMPRESSOR RUBBER SET	3	3		3 RUBBERS/SET
8	G2W 001 655	STOP VALVE ASSEMBLY	1	1		Gas: ø9.52 Liquid: ø6.35 Includes pipes
9	G2W 001 053	SERVICE PANEL ASSEMBLY	1	1		
10	G2W 001 060	BACK PANEL ASSEMBLY	1	1		Not including SPEC NAME PLATE or No. 23
11	G2W 003 668	EXPANSION VALVE ASSEMBLY	1	1		Includes capillary tube (2PCS: ø4.0×ø2.4×240, ø3.0×ø1.8×100)
12	G2W 001 362	EXPANSION VALVE COIL	1	1	LEV	
13	G2W 002 665	4-WAY VALVE	1	1		
14	————	THERMO HOLDER (AMBIENT)	1	1		[ DK25A972G03 ]
15	G2W 001 067	CONDENSER WIRE NET ASSEMBLY	1	1		
16	G2W 002 065	CONDENSER NET	1	1		
17	G2W 002 150	SEPARATOR	1	1		
18	G2W 001 154	MOTOR SUPPORT	1	1		
19	G2W 001 057	TOP PANEL ASSEMBLY	1	1		Not including WIRING DIAGRAM LABEL or No. 22
20	G2W 005 660	OUTDOOR HEAT EXCHANGER	1			
20	G2W 001 660	OUTDOOR HEAT EXCHANGER		1		
21	G2W 002 350	OUTDOOR FAN MOTOR	1	1	MF	RC0J55-□□
22	————	LABEL	1	1		[ JG79R840H02 ]
23	————	LABEL	1	1		[ DG79T490H01 ]
24	G2W 001 368	DEFROST HEATER	1	1	H	
25	G2W 001 377	HEATER PROTECTOR ASSEMBLY	1	1	26H	
②6	G2W 005 371	COMPRESSOR LEAD WIRE ASSEMBLY	1	1		

MUZ-AP25VGH -E3 MUZ-AP35VGH -E3

1-12. OUTDOOR UNIT ELECTRICAL PARTS





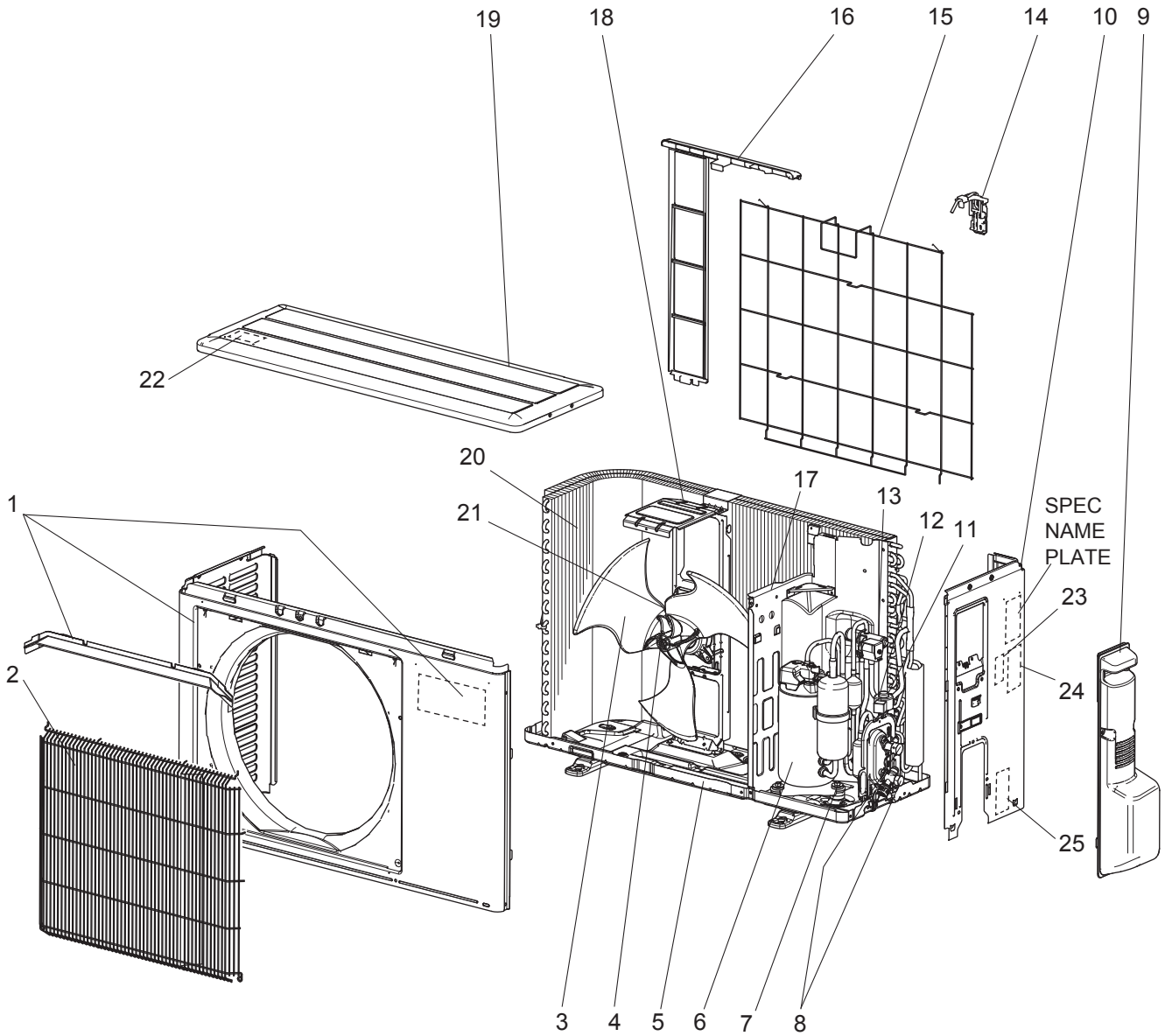
## 1-12. OUTDOOR UNIT ELECTRICAL PARTS

1. The part quantity below indicates the required number of pieces per unit.

No.	Part No.	Part Name	MUZ-AP25VGH - [E3]	MUZ-AP35VGH - [E3]	Symbol in Wiring Diagram	Remarks [Drawing No.]
1	G2W 001 359	REACTOR	1		L61	
1	G2W 002 359	REACTOR		1	L61	
2	G2W 001 353	THERMISTOR SET	1	1	RT61, RT62	DEFROST, DISCHARGE TEMPERATURE
3	G2W 001 355	AMBIENT TEMPERATURE THERMISTOR	1	1	RT65	
4	G2W 001 357	OUTDOOR HEAT EXCHANGER TEMPERATURE THERMISTOR	1	1	RT68	
5	G2W 003 365	R.V. COIL ASSEMBLY	1	1	21S4	
6	G2W 001 373	TERMINAL BLOCK	1	1	TB1	5P (S1, S2, S3, L, N)
7	————	P.C. BOARD COVER	1	1		[ DY02B869G01 ], [ SQ33C889H05 ] (2 PCS)
8	————	P.C. BOARD SUPPORT	1	1		[ DY25A804G02 ]
9	G2W 020 460	INVERTER P.C. BOARD ASSEMBLY	1			Includes heat sink and RT64
9	G2W 021 460	INVERTER P.C. BOARD ASSEMBLY		1		Includes heat sink and RT64

MUZ-AP42VG -E1, ET1

1-13. OUTDOOR UNIT STRUCTURAL PARTS AND FUNCTIONAL PARTS



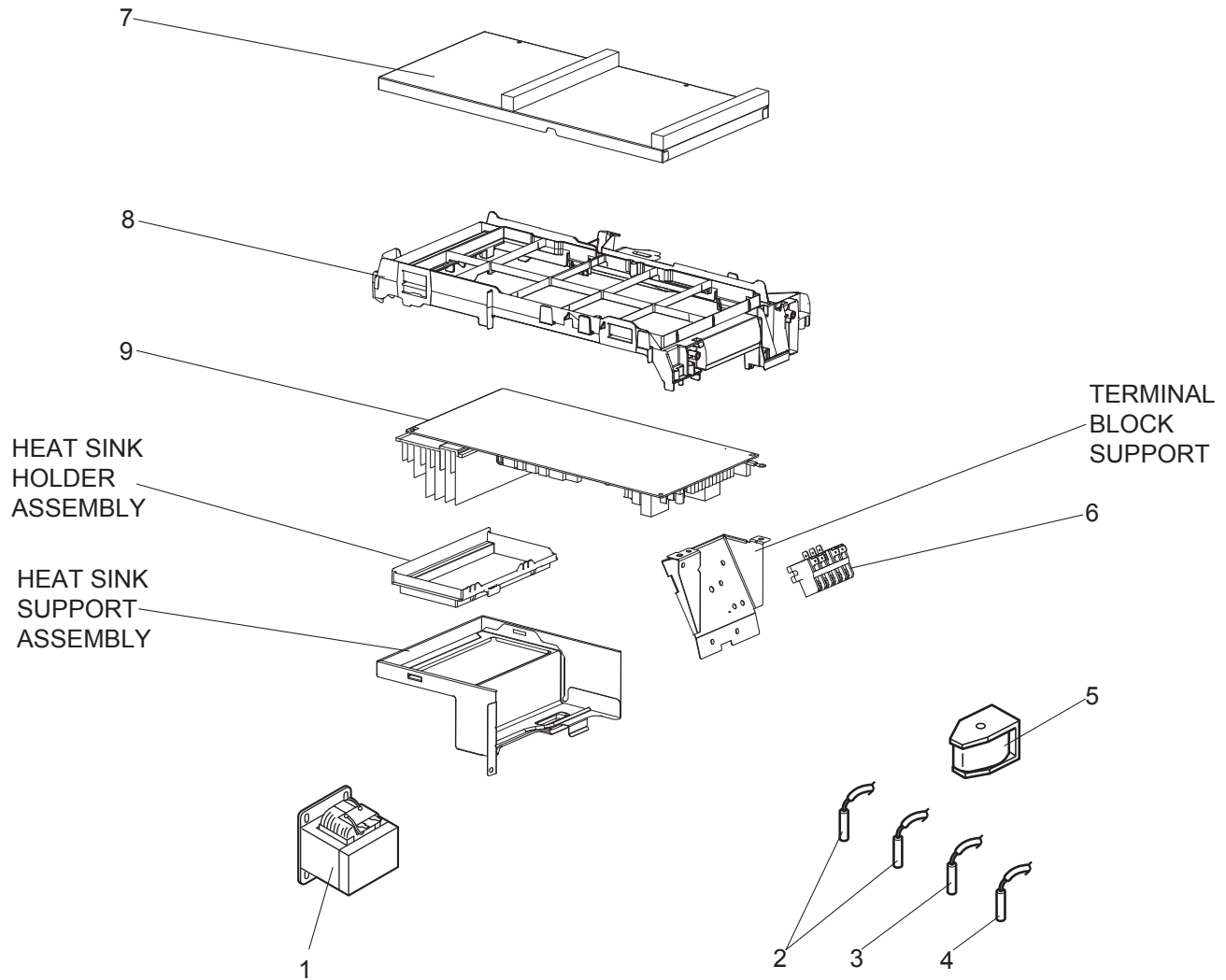
## 1-13. OUTDOOR UNIT STRUCTURAL PARTS AND FUNCTIONAL PARTS

1. The part quantity below indicates the required number of pieces per unit.
2. The circled No. indicates that the part is not shown in the figure.

No.	Part No.	Part Name	MUZ-AP42VG - [E1]	MUZ-AP42VG - [E1]	Symbol in Wiring Diagram	Remarks [Drawing No.]
1	G2W 004 050	CABINET	1	1		Includes ice guard, trade mark
2	G2W 001 063	WIRE GRILLE	1	1		
3	G2W 001 550	PROPELLER FAN	1	1		
4	G2W 001 753	PROPELLER FAN NUT	1	1		
5	G2W 001 055	BASE ASSEMBLY	1	1		
6	G2W 002 650	COMPRESSOR	1	1	MC	SVB130FBBMC
7	G2W 002 773	COMPRESSOR RUBBER SET	3	3		3 RUBBERS/SET
8	G2W 001 655	STOP VALVE ASSEMBLY	1	1		Gas: ø9.52 Liquid: ø6.35 Includes pipes
9	G2W 001 053	SERVICE PANEL ASSEMBLY	1	1		
10	G2W 001 060	BACK PANEL ASSEMBLY	1	1		Not including SPEC NAME PLATE or No. 23 to 25
11	G2W 001 668	EXPANSION VALVE ASSEMBLY	1	1		Includes capillary tube ø4.0×ø2.4×240
12	G2W 001 362	EXPANSION VALVE COIL	1	1	LEV	
13	G2W 001 665	4-WAY VALVE	1	1		
14	————	THERMO HOLDER (AMBIENT)	1	1		[ DK25A972G04 ]
15	G2W 002 067	CONDENSER WIRE NET ASSEMBLY	1	1		
16	G2W 001 065	CONDENSER NET	1	1		
17	G2W 003 150	SEPARATOR	1	1		
18	G2W 002 154	MOTOR SUPPORT	1	1		
19	G2W 001 057	TOP PANEL ASSEMBLY	1	1		Not including WIRING DIAGRAM LABEL or No. 22
20	G2W 006 660	OUTDOOR HEAT EXCHANGER	1	1		Includes No. 27
21	G2W 001 350	OUTDOOR FAN MOTOR	1	1	MF	RC0J50-□□
22	————	LABEL	1	1		[ JG79R840H02 ]
23	————	LABEL	1	1		[ JG79B901H01 ]
24	————	LABEL	1	1		[ JG79R837H01 ]
25	————	LABEL	1	1		[ DG79T472H01 ]
②⑥	G2W 002 371	COMPRESSOR LEAD WIRE ASSEMBLY	1	1		
②⑦	G2W 001 672	CAPILLARY TUBE PIPE ASSEMBLY	1	1		Includes capillary tube ø3.0×ø1.8×600 (×2)
②⑧	G2W 001 765	DRAIN SOCKET	1	1		

MUZ-AP42VG -E1, ET1

1-14. OUTDOOR UNIT ELECTRICAL PARTS



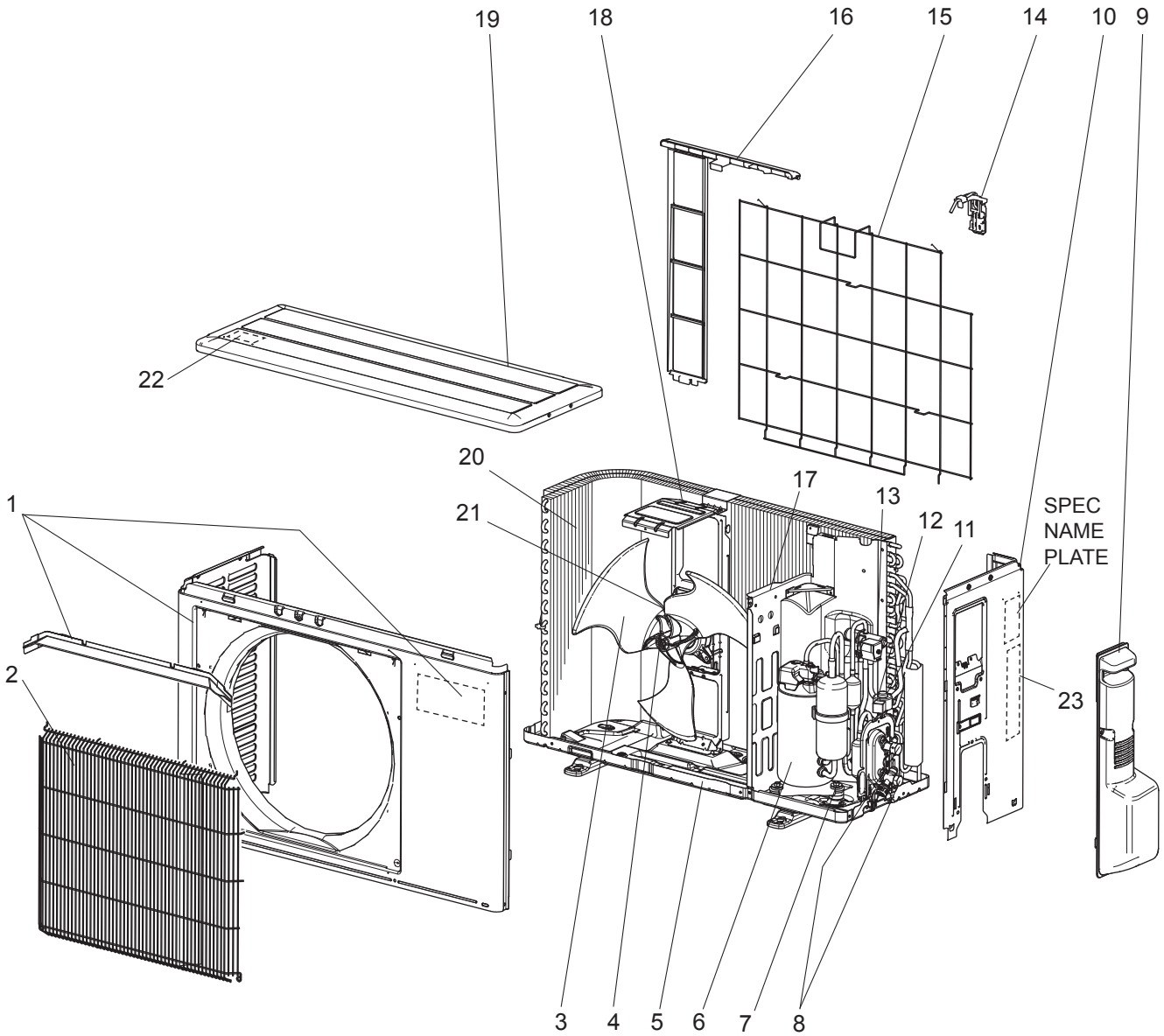
## 1-14. OUTDOOR UNIT ELECTRICAL PARTS

1. The part quantity below indicates the required number of pieces per unit.

No.	Part No.	Part Name	MUZ-AP42VG - [ET]	MUZ-AP42VG - [ET]	Symbol in Wiring Diagram	Remarks [Drawing No.]
1	G2W 002 359	REACTOR	1	1	L61	
2	G2W 001 353	THERMISTOR SET	1	1	RT61, RT62	DEFROST, DISCHARGE TEMPERATURE
3	G2W 001 355	AMBIENT TEMPERATURE THERMISTOR	1	1	RT65	
4	G2W 001 357	OUTDOOR HEAT EXCHANGER TEMPERATURE THERMISTOR	1	1	RT68	
5	G2W 001 365	R.V. COIL ASSEMBLY	1	1	21S4	
6	G2W 001 373	TERMINAL BLOCK	1	1	TB1	5P (S1, S2, S3, L, N)
7	————	P.C. BOARD COVER	1	1		[ DY02B869G01 ], [ SQ33C889H05 ] (2 PCS)
8	————	P.C. BOARD SUPPORT	1	1		[ DY25A804G02 ]
9	G2W 004 460	INVERTER P.C. BOARD ASSEMBLY	1	1		Includes heat sink and RT64

MUZ-AP42VG -E2, ET2, ER2

1-15. OUTDOOR UNIT STRUCTURAL PARTS AND FUNCTIONAL PARTS



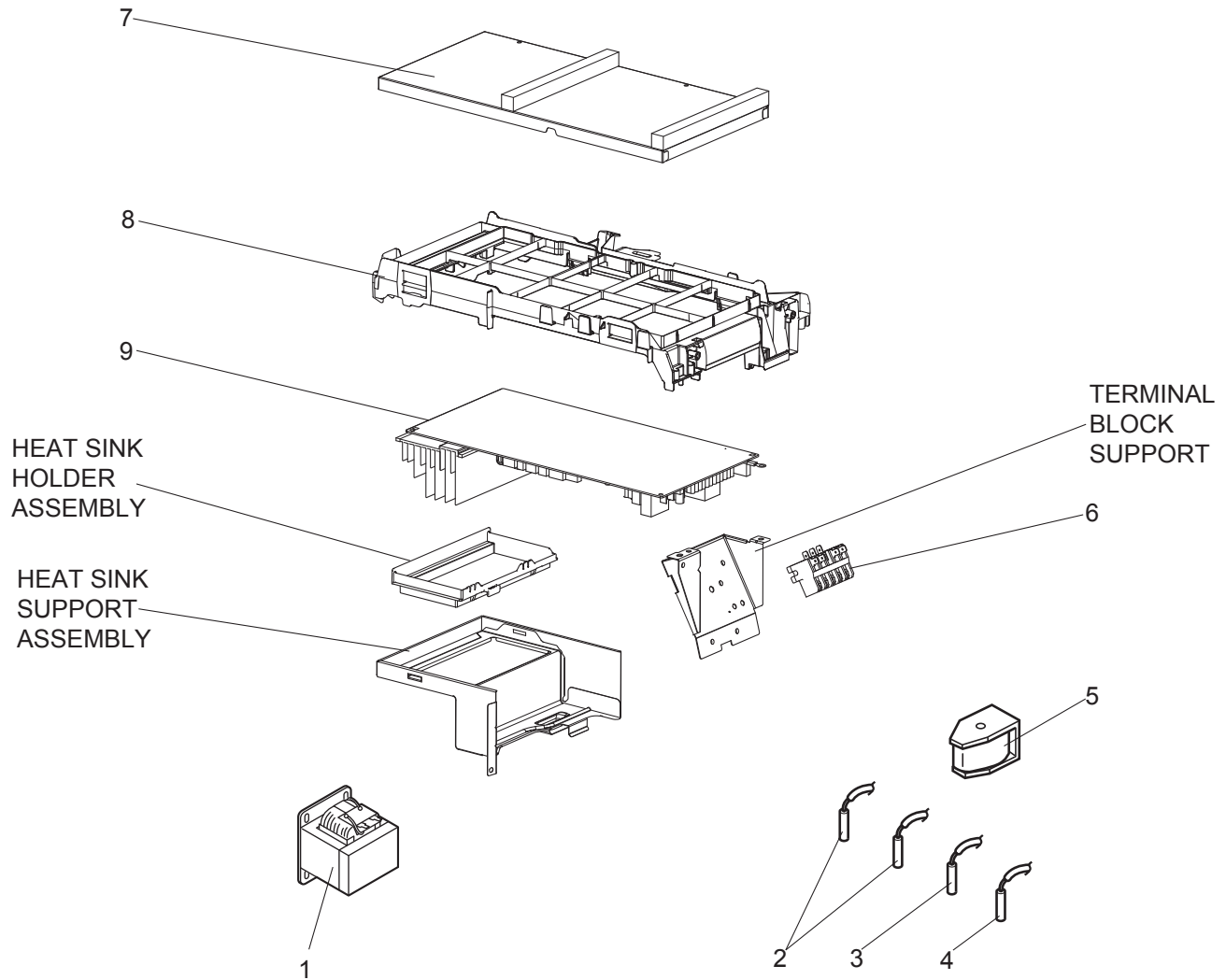
## 1-15. OUTDOOR UNIT STRUCTURAL PARTS AND FUNCTIONAL PARTS

1. The part quantity below indicates the required number of pieces per unit.
2. The circled No. indicates that the part is not shown in the figure.

No.	Part No.	Part Name	MUZ-AP42VG-[E2]	MUZ-AP42VG-[ET2]	MUZ-AP42VG-[ER2]	Symbol in Wiring Diagram	Remarks [Drawing No.]
1	G2W 004 050	CABINET	1	1	1		Includes ice guard, trade mark
2	G2W 001 063	WIRE GRILLE	1	1	1		
3	G2W 001 550	PROPELLER FAN	1	1	1		
4	G2W 001 753	PROPELLER FAN NUT	1	1	1		
5	G2W 001 055	BASE ASSEMBLY	1	1	1		
6	G2W 002 650	COMPRESSOR	1	1	1	MC	SVB130FBBMC
7	G2W 002 773	COMPRESSOR RUBBER SET	3	3	3		3 RUBBERS/SET
8	G2W 001 655	STOP VALVE ASSEMBLY	1	1	1		Gas: $\varnothing 9.52$ Liquid: $\varnothing 6.35$ Includes pipes
9	G2W 001 053	SERVICE PANEL ASSEMBLY	1	1	1		
10	G2W 001 060	BACK PANEL ASSEMBLY	1	1	1		Not including SPEC NAME PLATE or No. 23
11	G2W 001 668	EXPANSION VALVE ASSEMBLY	1	1	1		Includes capillary tube $\varnothing 4.0 \times \varnothing 2.4 \times 240$
12	G2W 001 362	EXPANSION VALVE COIL	1	1	1	LEV	
13	G2W 002 665	4-WAY VALVE	1	1	1		
14	————	THERMO HOLDER (AMBIENT)	1	1	1		[ DK25A972G04 ]
15	G2W 002 067	CONDENSER WIRE NET ASSEMBLY	1	1	1		
16	G2W 001 065	CONDENSER NET	1	1	1		
17	G2W 003 150	SEPARATOR	1	1	1		
18	G2W 002 154	MOTOR SUPPORT	1	1	1		
19	G2W 001 057	TOP PANEL ASSEMBLY	1	1	1		Not including WIRING DIAGRAM LABEL or No. 22
20	G2W 006 660	OUTDOOR HEAT EXCHANGER	1	1	1		Includes No. 25
21	G2W 002 350	OUTDOOR FAN MOTOR	1	1	1	MF	RC0J55-□□
22	————	LABEL	1	1	1		[ JG79R840H02 ]
23	————	LABEL	1		1		[ DG79T490H01 ]
23	————	LABEL		1			[ DG79T490H02 ]
②4	G2W 002 371	COMPRESSOR LEAD WIRE ASSEMBLY	1	1	1		
②5	G2W 001 672	CAPILLARY TUBE PIPE ASSEMBLY	1	1	1		Includes capillary tube $\varnothing 3.0 \times \varnothing 1.8 \times 600$ (x2)
②6	G2W 001 765	DRAIN SOCKET	1	1	1		

MUZ-AP42VG -E2, ET2, ER2

1-16. OUTDOOR UNIT ELECTRICAL PARTS





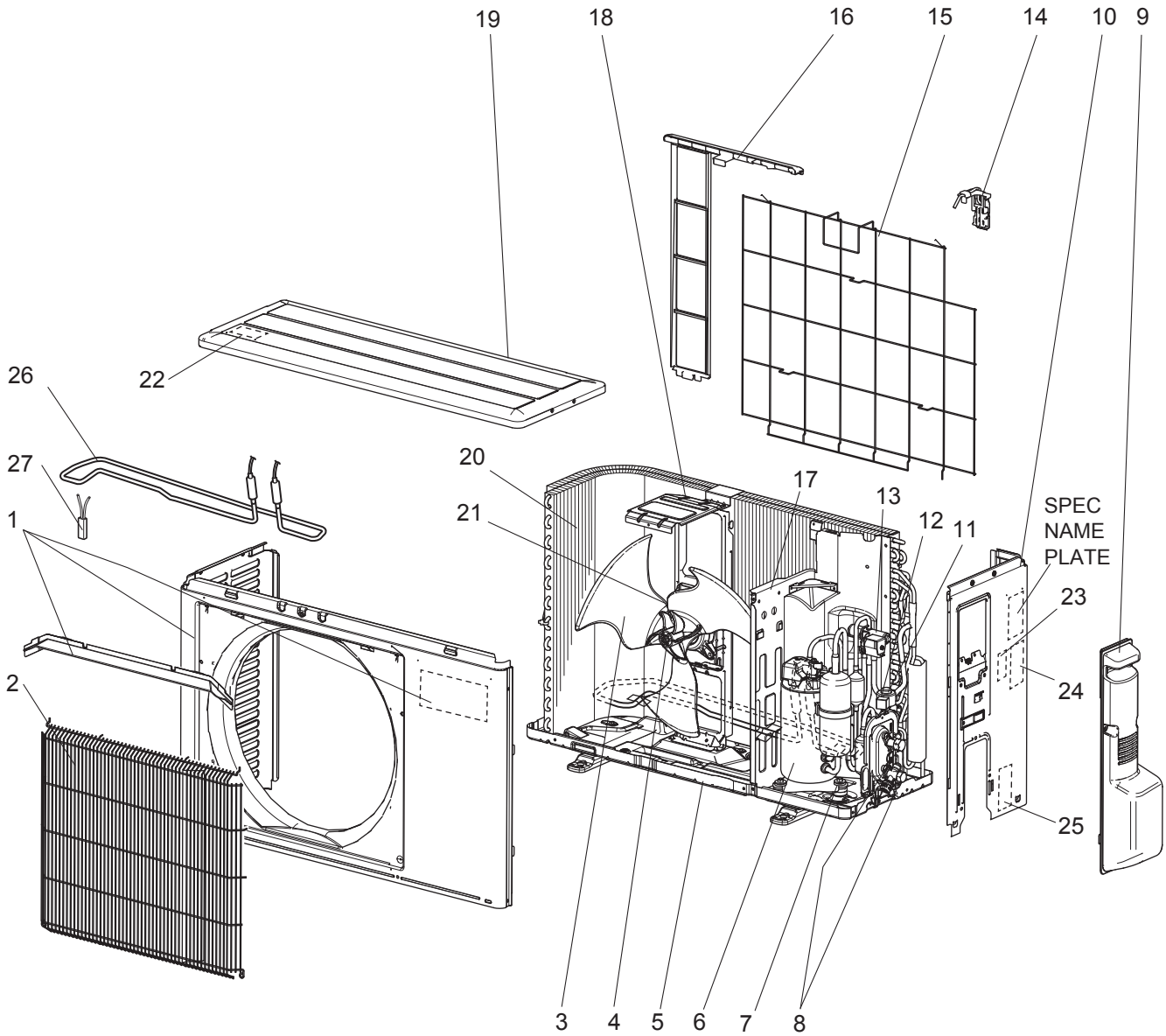
## 1-16. OUTDOOR UNIT ELECTRICAL PARTS

1. The part quantity below indicates the required number of pieces per unit.

No.	Part No.	Part Name	MUZ-AP42VG-E2	MUZ-AP42VG-ET2	MUZ-AP42VG-ER2	Symbol in Wiring Diagram	Remarks [Drawing No.]
1	G2W 002 359	REACTOR	1	1	1	L61	
2	G2W 001 353	THERMISTOR SET	1	1	1	RT61, RT62	DEFROST, DISCHARGE TEMPERATURE
3	G2W 001 355	AMBIENT TEMPERATURE THERMISTOR	1	1	1	RT65	
4	G2W 001 357	OUTDOOR HEAT EXCHANGER TEMPERATURE THERMISTOR	1	1	1	RT68	
5	G2W 003 365	R.V. COIL ASSEMBLY	1	1	1	21S4	
6	G2W 001 373	TERMINAL BLOCK	1	1	1	TB1	5P (S1, S2, S3, L, N)
7	_____	P.C. BOARD COVER	1	1	1		[ DY02B869G01 ], [ SQ33C889H05 ] (2 PCS)
8	_____	P.C. BOARD SUPPORT	1	1	1		[ DY25A804G02 ]
9	G2W 016 460	INVERTER P.C. BOARD ASSEMBLY	1	1	1		Includes heat sink and RT64

MUZ-AP42VGH -E1

1-17. OUTDOOR UNIT STRUCTURAL PARTS AND FUNCTIONAL PARTS



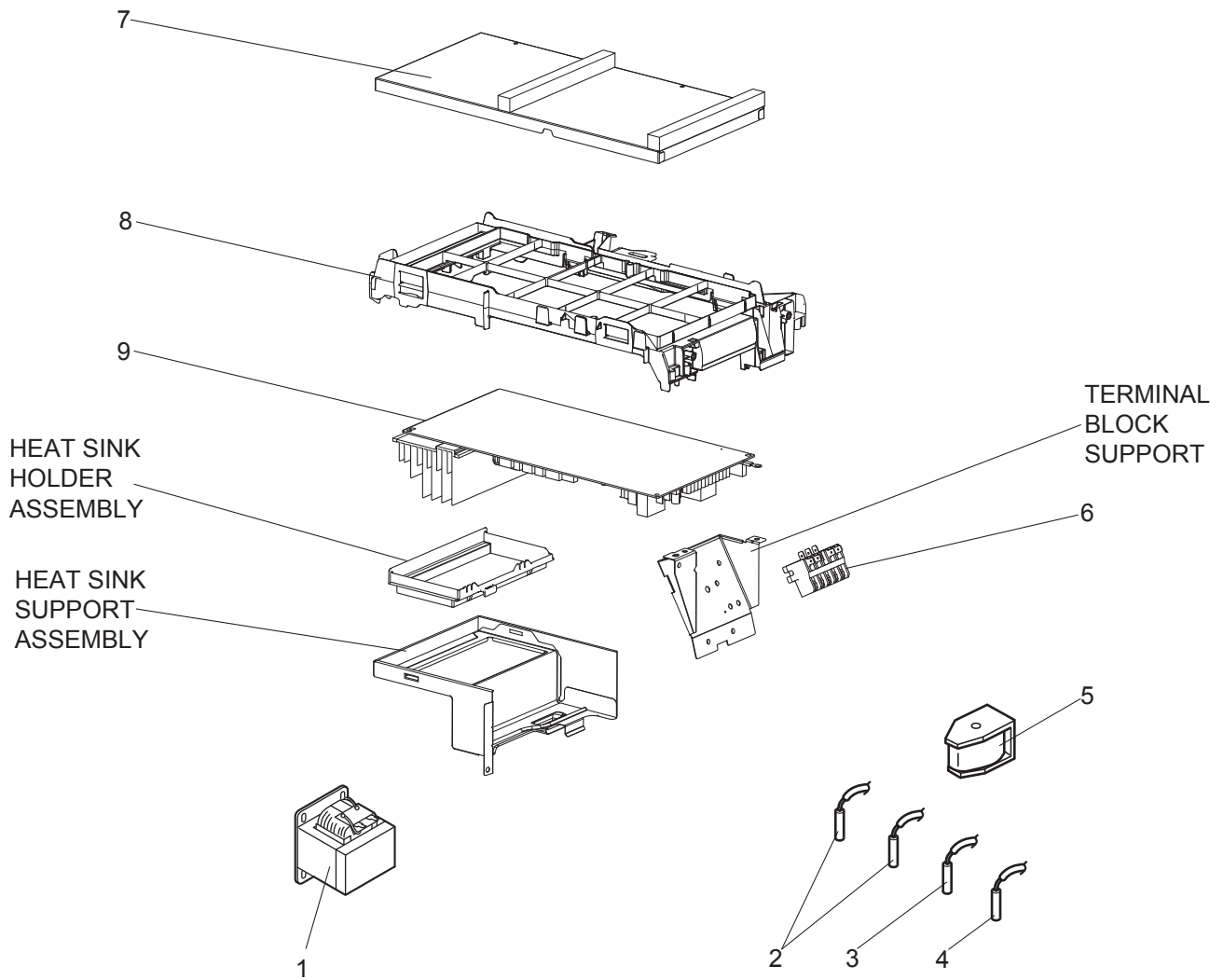
## 1-17. OUTDOOR UNIT STRUCTURAL PARTS AND FUNCTIONAL PARTS

1. The part quantity below indicates the required number of pieces per unit.
2. The circled No. indicates that the part is not shown in the figure.

No.	Part No.	Part Name	MUZ-AP42VGH - [ET]	Symbol in Wiring Diagram	Remarks [Drawing No.]
1	G2W 004 050	CABINET	1		Includes ice guard, trade mark
2	G2W 001 063	WIRE GRILLE	1		
3	G2W 001 550	PROPELLER FAN	1		
4	G2W 001 753	PROPELLER FAN NUT	1		
5	G2W 002 055	BASE ASSEMBLY	1		
6	G2W 002 650	COMPRESSOR	1	MC	SVB130FBBMC
7	G2W 002 773	COMPRESSOR RUBBER SET	3		3 RUBBERS/SET
8	G2W 001 655	STOP VALVE ASSEMBLY	1		Gas: $\varnothing 9.52$ Liquid: $\varnothing 6.35$ Includes pipes
9	G2W 001 053	SERVICE PANEL ASSEMBLY	1		
10	G2W 001 060	BACK PANEL ASSEMBLY	1		Not including SPEC NAME PLATE or No. 23 to 25
11	G2W 001 668	EXPANSION VALVE ASSEMBLY	1		Includes capillary tube $\varnothing 4.0 \times \varnothing 2.4 \times 240$
12	G2W 001 362	EXPANSION VALVE COIL	1	LEV	
13	G2W 001 665	4-WAY VALVE	1		
14	————	THERMO HOLDER (AMBIENT)	1		[ DK25A972G04 ]
15	G2W 002 067	CONDENSER WIRE NET ASSEMBLY	1		
16	G2W 001 065	CONDENSER NET	1		
17	G2W 004 150	SEPARATOR	1		
18	G2W 002 154	MOTOR SUPPORT	1		
19	G2W 001 057	TOP PANEL ASSEMBLY	1		Not including WIRING DIAGRAM LABEL or No. 22
20	G2W 006 660	OUTDOOR HEAT EXCHANGER	1		Includes No. 29
21	G2W 001 350	OUTDOOR FAN MOTOR	1	MF	RC0J50-□□
22	————	LABEL	1		[ JG79R840H02 ]
23	————	LABEL	1		[ JG79B901H01 ]
24	————	LABEL	1		[ JG79R837H01 ]
25	————	LABEL	1		[ DG79T472H01 ]
26	G2W 001 368	DEFROST HEATER	1	H	
27	G2W 001 377	HEATER PROTECTOR ASSEMBLY	1	26H	
⑳	G2W 002 371	COMPRESSOR LEAD WIRE ASSEMBLY	1		
㉑	G2W 001 672	CAPILLARY TUBE PIPE ASSEMBLY	1		Includes capillary tube $\varnothing 3.0 \times \varnothing 1.8 \times 600$ (x2)

MUZ-AP42VGH -E1

1-18. OUTDOOR UNIT ELECTRICAL PARTS





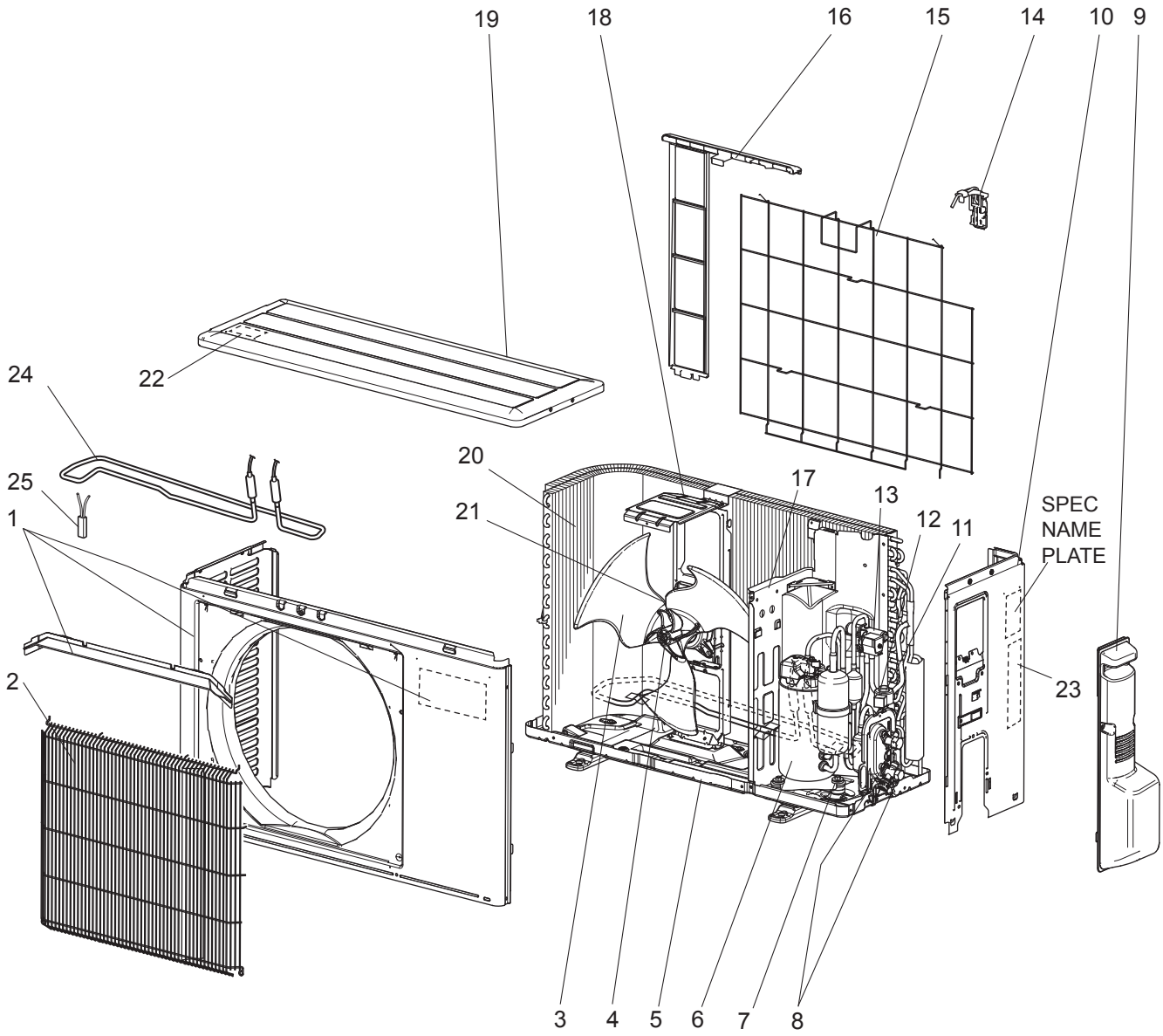
### 1-18. OUTDOOR UNIT ELECTRICAL PARTS

1. The part quantity below indicates the required number of pieces per unit.

No.	Part No.	Part Name	MUZ-AP42VGH-[ET]	Symbol in Wiring Diagram	Remarks [Drawing No.]
1	G2W 002 359	REACTOR	1	L61	
2	G2W 001 353	THERMISTOR SET	1	RT61, RT62	DEFROST, DISCHARGE TEMPERATURE TEMPERATURE
3	G2W 001 355	AMBIENT TEMPERATURE THERMISTOR	1	RT65	
4	G2W 001 357	OUTDOOR HEAT EXCHANGER TEMPERATURE THERMISTOR	1	RT68	
5	G2W 001 365	R.V. COIL ASSEMBLY	1	21S4	
6	G2W 001 373	TERMINAL BLOCK	1	TB1	5P (S1, S2, S3, L, N)
7	_____	P.C. BOARD COVER	1		[ DY02B869G01 ], [ SQ33C889H05 ] (2 PCS)
8	_____	P.C. BOARD SUPPORT	1		[ DY25A804G02 ]
9	G2W 001 460	INVERTER P.C. BOARD ASSEMBLY	1		Includes heat sink and RT64

MUZ-AP42VGH -E2

1-19. OUTDOOR UNIT STRUCTURAL PARTS AND FUNCTIONAL PARTS



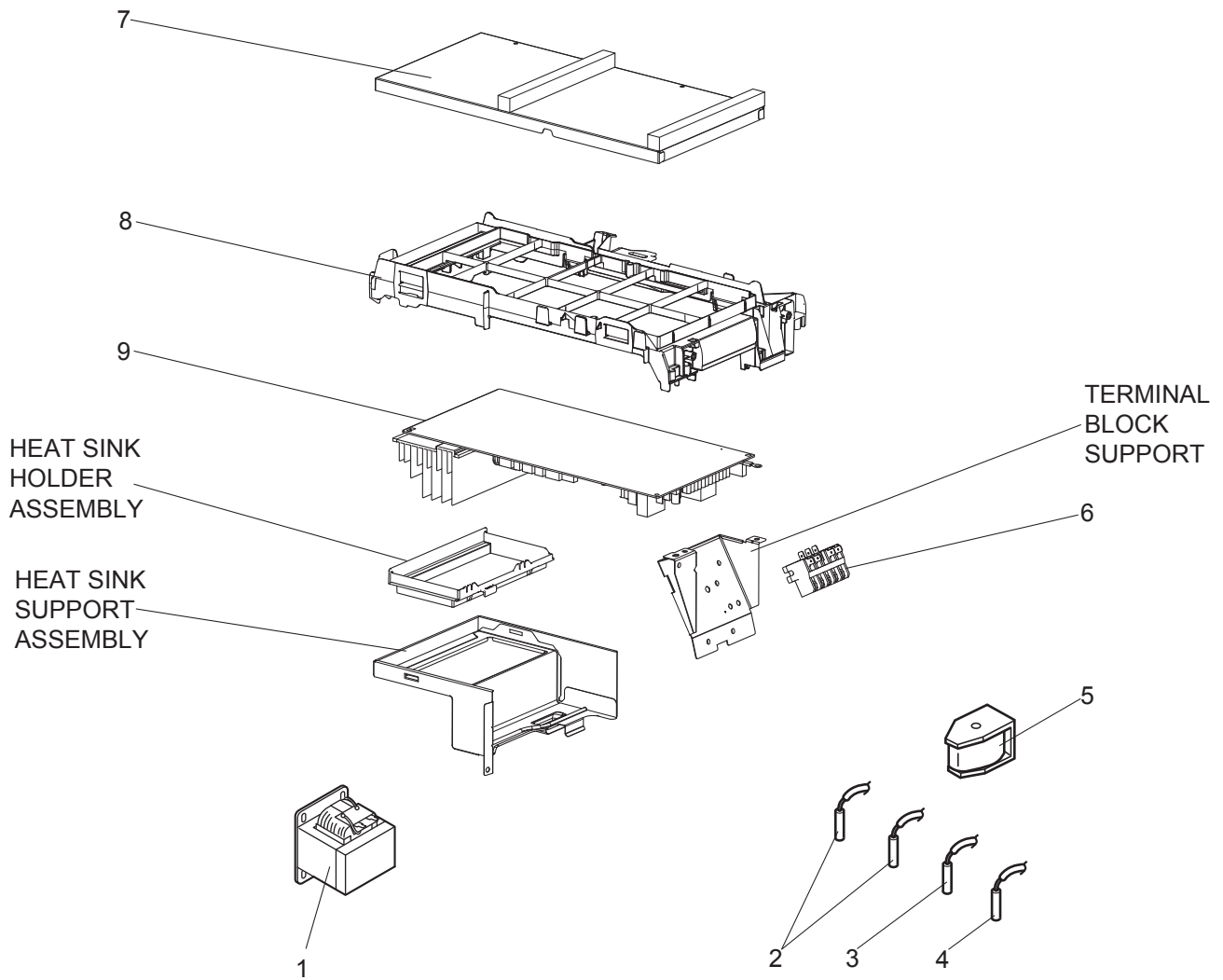
## 1-19. OUTDOOR UNIT STRUCTURAL PARTS AND FUNCTIONAL PARTS

1. The part quantity below indicates the required number of pieces per unit.
2. The circled No. indicates that the part is not shown in the figure.

No.	Part No.	Part Name	MUZ-AP42VGH - [E2]	Symbol in Wiring Diagram	Remarks [Drawing No.]
1	G2W 004 050	CABINET	1		Includes ice guard, trade mark
2	G2W 001 063	WIRE GRILLE	1		
3	G2W 001 550	PROPELLER FAN	1		
4	G2W 001 753	PROPELLER FAN NUT	1		
5	G2W 002 055	BASE ASSEMBLY	1		
6	G2W 002 650	COMPRESSOR	1	MC	SVB130FBBMC
7	G2W 002 773	COMPRESSOR RUBBER SET	3		3 RUBBERS/SET
8	G2W 001 655	STOP VALVE ASSEMBLY	1		Gas: ø9.52 Liquid: ø6.35 Includes pipes
9	G2W 001 053	SERVICE PANEL ASSEMBLY	1		
10	G2W 001 060	BACK PANEL ASSEMBLY	1		Not including SPEC NAME PLATE or No. 23
11	G2W 001 668	EXPANSION VALVE ASSEMBLY	1		Includes capillary tube ø4.0×ø2.4×240
12	G2W 001 362	EXPANSION VALVE COIL	1	LEV	
13	G2W 002 665	4-WAY VALVE	1		
14	_____	THERMO HOLDER (AMBIENT)	1		[ DK25A972G04 ]
15	G2W 002 067	CONDENSER WIRE NET ASSEMBLY	1		
16	G2W 001 065	CONDENSER NET	1		
17	G2W 004 150	SEPARATOR	1		
18	G2W 002 154	MOTOR SUPPORT	1		
19	G2W 001 057	TOP PANEL ASSEMBLY	1		Not including WIRING DIAGRAM LABEL or No. 22
20	G2W 006 660	OUTDOOR HEAT EXCHANGER	1		Includes No. 27
21	G2W 002 350	OUTDOOR FAN MOTOR	1	MF	RC0J55-□□
22	_____	LABEL	1		[ JG79R840H02 ]
23	_____	LABEL	1		[ DG79T490H01 ]
24	G2W 001 368	DEFROST HEATER	1	H	
25	G2W 001 377	HEATER PROTECTOR ASSEMBLY	1	26H	
②⑥	G2W 002 371	COMPRESSOR LEAD WIRE ASSEMBLY	1		
②⑦	G2W 001 672	CAPILLARY TUBE PIPE ASSEMBLY	1		Includes capillary tube ø3.0×ø1.8×600 (×2)

MUZ-AP42VGH -[E2]

1-20. OUTDOOR UNIT ELECTRICAL PARTS





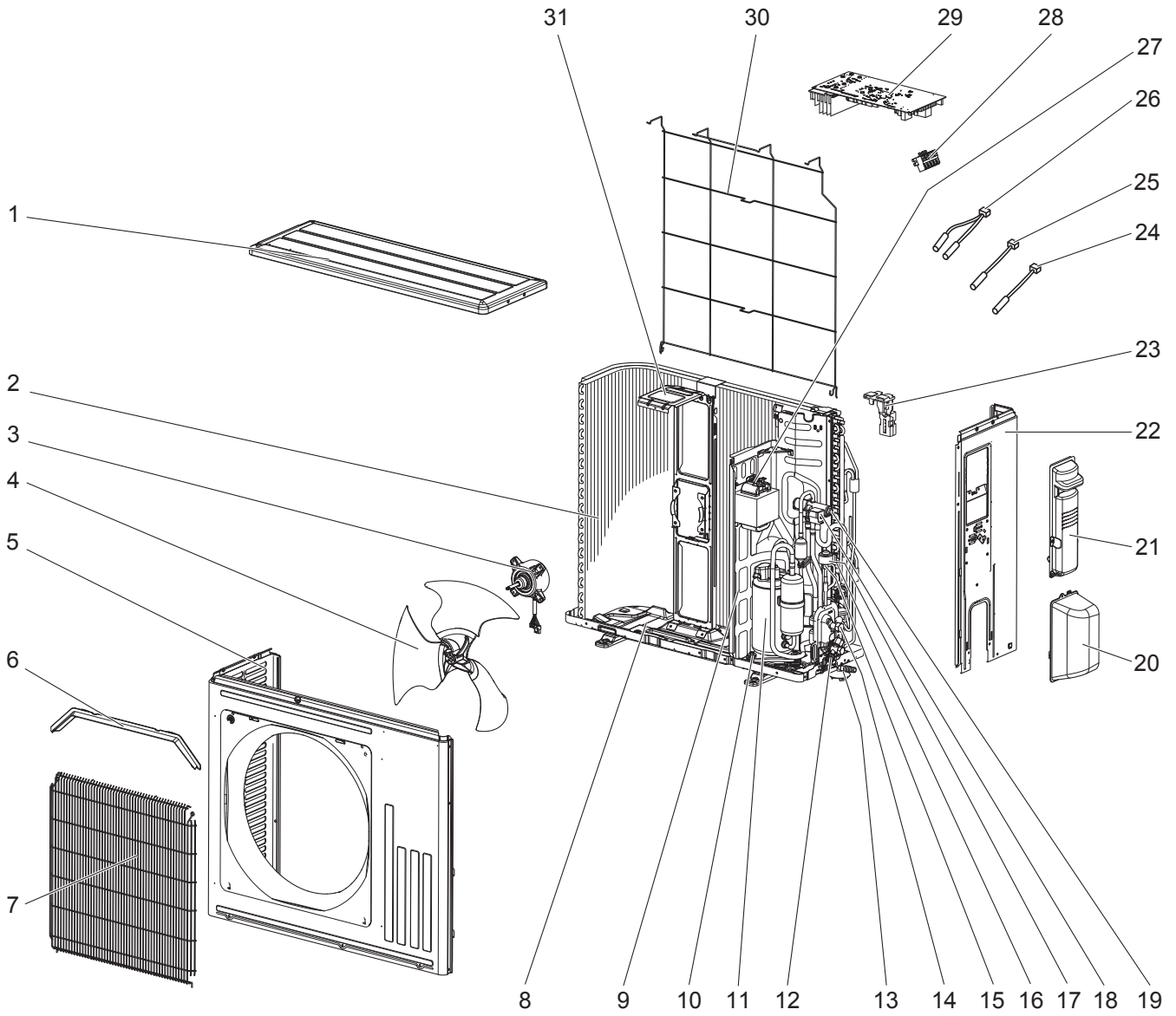
## 1-20. OUTDOOR UNIT ELECTRICAL PARTS

1. The part quantity below indicates the required number of pieces per unit.

No.	Part No.	Part Name	MUZ-AP42VGH - [E2]	Symbol in Wiring Diagram	Remarks [Drawing No.]
1	G2W 002 359	REACTOR	1	L61	
2	G2W 001 353	THERMISTOR SET	1	RT61, RT62	DEFROST, DISCHARGE TEMPERATURE
3	G2W 001 355	AMBIENT TEMPERATURE THERMISTOR	1	RT65	
4	G2W 001 357	OUTDOOR HEAT EXCHANGER TEMPERATURE THERMISTOR	1	RT68	
5	G2W 003 365	R.V. COIL ASSEMBLY	1	21S4	
6	G2W 001 373	TERMINAL BLOCK	1	TB1	5P (S1, S2, S3, L, N)
7	_____	P.C. BOARD COVER	1		[ DY02B869G01 ], [ SQ33C889H05 ] (2 PCS)
8	_____	P.C. BOARD SUPPORT	1		[ DY25A804G02 ]
9	G2W 017 460	INVERTER P.C. BOARD ASSEMBLY	1		Includes heat sink and RT64

MUZ-AP50VG -E1, ET1, ER1, E2

### 1-21. OUTDOOR UNIT STRUCTURAL PARTS, ELECTRICAL PARTS AND FUNCTIONAL PARTS



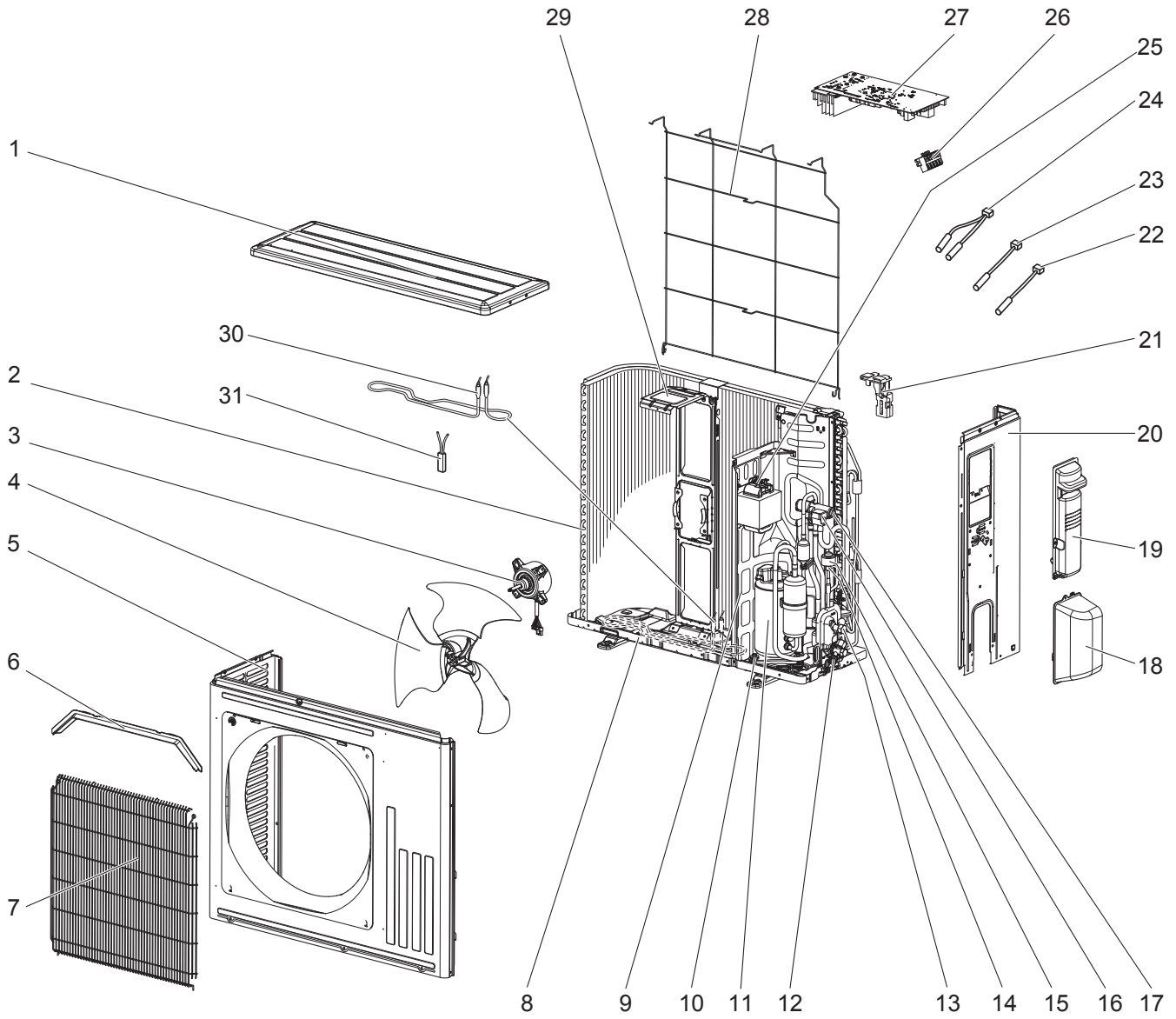
## 1-21. OUTDOOR UNIT STRUCTURAL PARTS, ELECTRICAL PARTS AND FUNCTIONAL PARTS

1. The part quantity below indicates the required number of pieces per unit.  
2. The circled No. indicates that the part is not shown in the figure.

No.	Part No.	Part Name	MUZ-AP50VG - [E1]	MUZ-AP50VG - [E1]	MUZ-AP50VG - [E1]	MUZ-AP50VG - [E2]	Symbol in Wiring Diagram	Remarks
1	E22 Y86 297	TOP PANEL	1	1	1	1		
2	E22 Y86 630	OUTDOOR HEAT EXCHANGER	1	1	1	1		
3	E22 Y86 301	OUTDOOR FAN MOTOR	1	1	1	1	MF	RC0J50-□□
4	E22 Y86 501	PROPELLER FAN	1	1	1	1		
5	E22 Y86 232	CABINET	1	1	1	1		
6	E22 Y86 531	ICE GUARD	1	1	1	1		
7	E22 Y86 521	GRILLE	1	1	1	1		
8	E22 Y84 290	BASE	1	1	1	1		
9	E22 Y86 293	SEPARATOR	1	1	1	1		
10	E22 C34 506	COMPRESSOR RUBBER SET	3	3	3	3		3 RUBBERS/SET
11	E22 R83 900	COMPRESSOR	1	1	1	1	MC	SVB130FBBMT
12	E22 Y86 661	STOP VALVE (GAS)	1	1	1	1		ø9.52
13	E22 838 704	DRAIN SOCKET	1	1	1	1		
14	E22 Y86 662	STOP VALVE (LIQUID)	1	1	1	1		ø6.35
15	E22 Y84 640	EXPANSION VALVE	1	1	1	1		
16	E22 Y84 493	EXPANSION VALVE COIL	1	1	1	1	LEV	
17	E22 41G 645	EXPANSION VALVE ASSY	1	1	1	1		
18	E22 Y86 490	R.V. COIL	1	1	1	1	21S4	
19	E22 J44 961	4-WAY VALVE	1	1	1	1		
20	E22 Y86 650	VALVE COVER	1	1	1	1		
21	E22 Y86 245	SERVICE PANEL	1	1	1	1		
22	E22 Y86 233	BACK PANEL (OUT)	1	1	1	1		
23	E22 22A 079	THERMO HOLDER	1	1	1	1		
24	E22 Y86 309	AMBIENT TEMPERATURE THERMISTOR	1	1	1	1	RT65	
25	E22 C34 307	OUTDOOR HEAT EXCHANGER TEMPERATURE THERMISTOR	1	1	1	1	RT68	
26	E22 Y86 306	THERMISTOR SET	1	1	1	1	RT61,RT62	DEFROST, DISCHARGE TEMPERATURE
27	E22 H21 337	REACTOR	1	1	1	1	L61	
28	E22 T95 374	TERMINAL BLOCK	1	1	1	1	TB1	5 P
29	E22 02B 451	INVERTER P.C. BOARD	1	1	1	1		Includes heat sink and RT64
30	E22 Y86 525	CONDENSER WIRE NET	1	1	1	1		
31	E22 Y86 515	MOTOR SUPPORT	1	1	1	1		
③②	E22 P72 936	CAPILLARY TUBE	1	1	1	1		ø4.0 × ø2.4 × 240
③③	E22 F35 936	CAPILLARY TUBE	2	2	2	2		ø3.0 × ø2.0 × 210

**MUZ-AP50VGH -E1, E2**

**1-22. OUTDOOR UNIT STRUCTURAL PARTS, ELECTRICAL PARTS AND FUNCTIONAL PARTS**



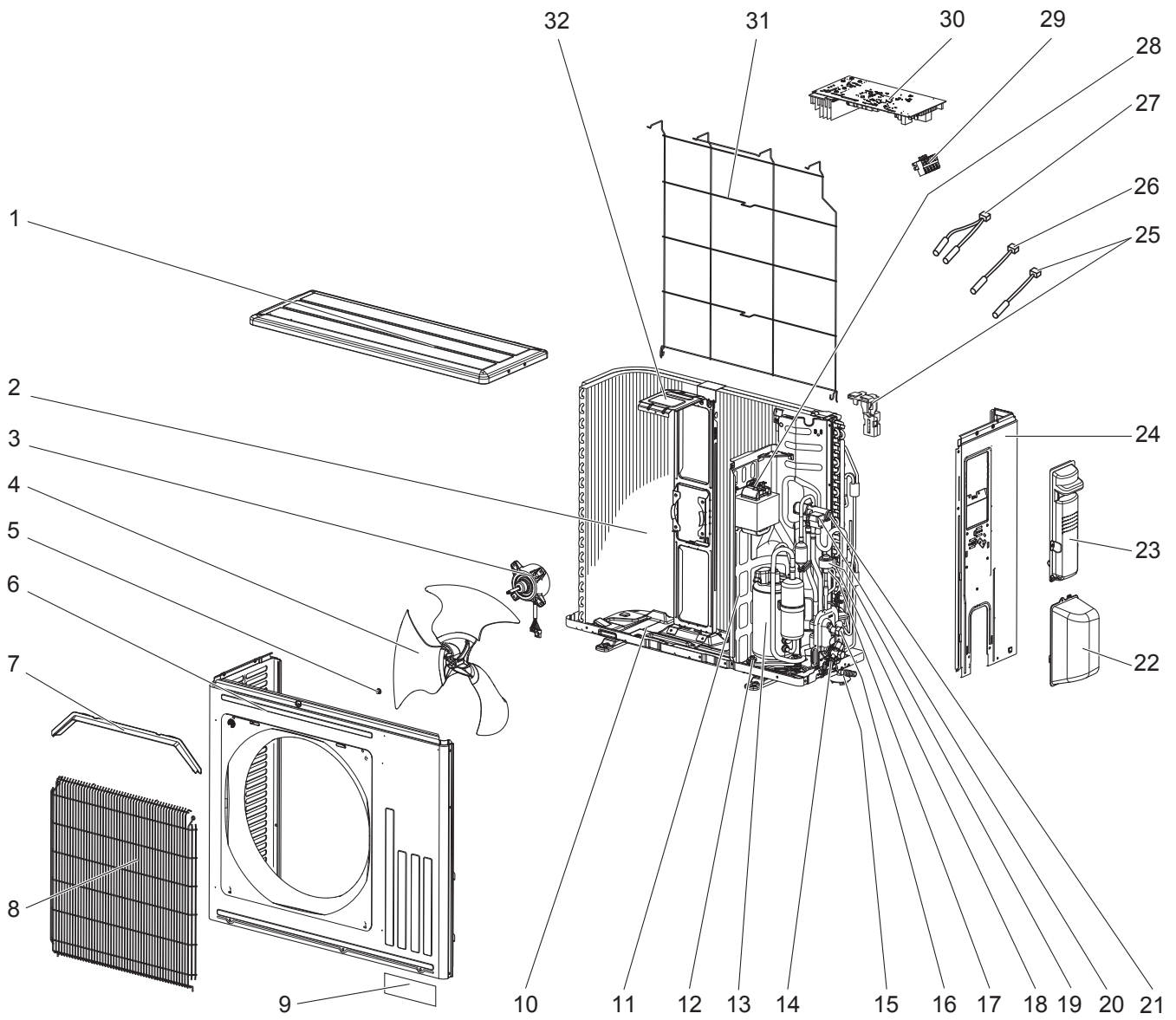
## 1-22. OUTDOOR UNIT STRUCTURAL PARTS, ELECTRICAL PARTS AND FUNCTIONAL PARTS

1. The part quantity below indicates the required number of pieces per unit.
2. The circled No. indicates that the part is not shown in the figure.

No.	Part No.	Part Name	MUZ-AP50VGH- <sup>[E1]</sup>	MUZ-AP50VGH- <sup>[E2]</sup>	Symbol in Wiring Diagram	Remarks
1	E22 Y86 297	TOP PANEL	1	1		
2	E22 Y86 630	OUTDOOR HEAT EXCHANGER	1	1		
3	E22 Y86 301	OUTDOOR FAN MOTOR	1	1	MF	RC0J50-□□
4	E22 Y86 501	PROPELLER FAN	1	1		
5	E22 Y86 232	CABINET	1	1		
6	E22 Y86 531	ICE GUARD	1	1		
7	E22 Y86 521	GRILLE	1	1		
8	E22 Y96 290	BASE	1	1		
9	E22 Y86 293	SEPARATOR	1			
9	E22 42M 293	SEPARATOR		1		
10	E22 C34 506	COMPRESSOR RUBBER SET	3	3		3 RUBBERS/SET
11	E22 R83 900	COMPRESSOR	1	1	MC	SVB130FBBMT
12	E22 Y86 661	STOP VALVE (GAS)	1	1		ø9.52
13	E22 Y86 662	STOP VALVE (LIQUID)	1	1		ø6.35
14	E22 Y84 640	EXPANSION VALVE	1	1		
15	E22 Y84 493	EXPANSION VALVE COIL	1	1	LEV	
16	E22 Y86 490	R.V. COIL	1	1	21S4	
17	E22 J44 961	4-WAY VALVE	1	1		
18	E22 Y86 650	VALVE COVER	1	1		
19	E22 Y86 245	SERVICE PANEL	1	1		
20	E22 Y86 233	BACK PANEL (OUT)	1	1		
21	E22 22A 079	THERMO HOLDER	1	1		
22	E22 Y86 309	AMBIENT TEMPERATURE THERMISTOR	1	1	RT65	
23	E22 C34 307	OUTDOOR HEAT EXCHANGER TEMPERATURE THERMISTOR	1	1	RT68	
24	E22 Y86 306	THERMISTOR SET	1	1	RT61,RT62	DEFROST, DISCHARGE TEMPERATURE
25	E22 H21 337	REACTOR	1	1	L61	
26	E22 T95 374	TERMINAL BLOCK	1	1	TB1	5 P
27	E22 03B 451	INVERTER P.C. BOARD	1	1		Includes heat sink and RT64
28	E22 Y86 525	CONDENSER WIRE NET	1	1		
29	E22 Y86 515	MOTOR SUPPORT	1	1		
30	E22 03B 526	DEFROST HEATER	1	1	H	
31	E22 03B 381	HEATER PROTECTOR	1	1	26H	
③②	E22 P72 936	CAPILLARY TUBE	1	1		ø4.0 × ø2.4 × 240
③③	E22 F35 936	CAPILLARY TUBE	2	2		ø3.0 × ø2.0 × 210

MUZ-AP60VG -E1, ET1, ER1, E2

1-23. OUTDOOR UNIT STRUCTURAL PARTS, ELECTRICAL PARTS AND FUNCTIONAL PARTS



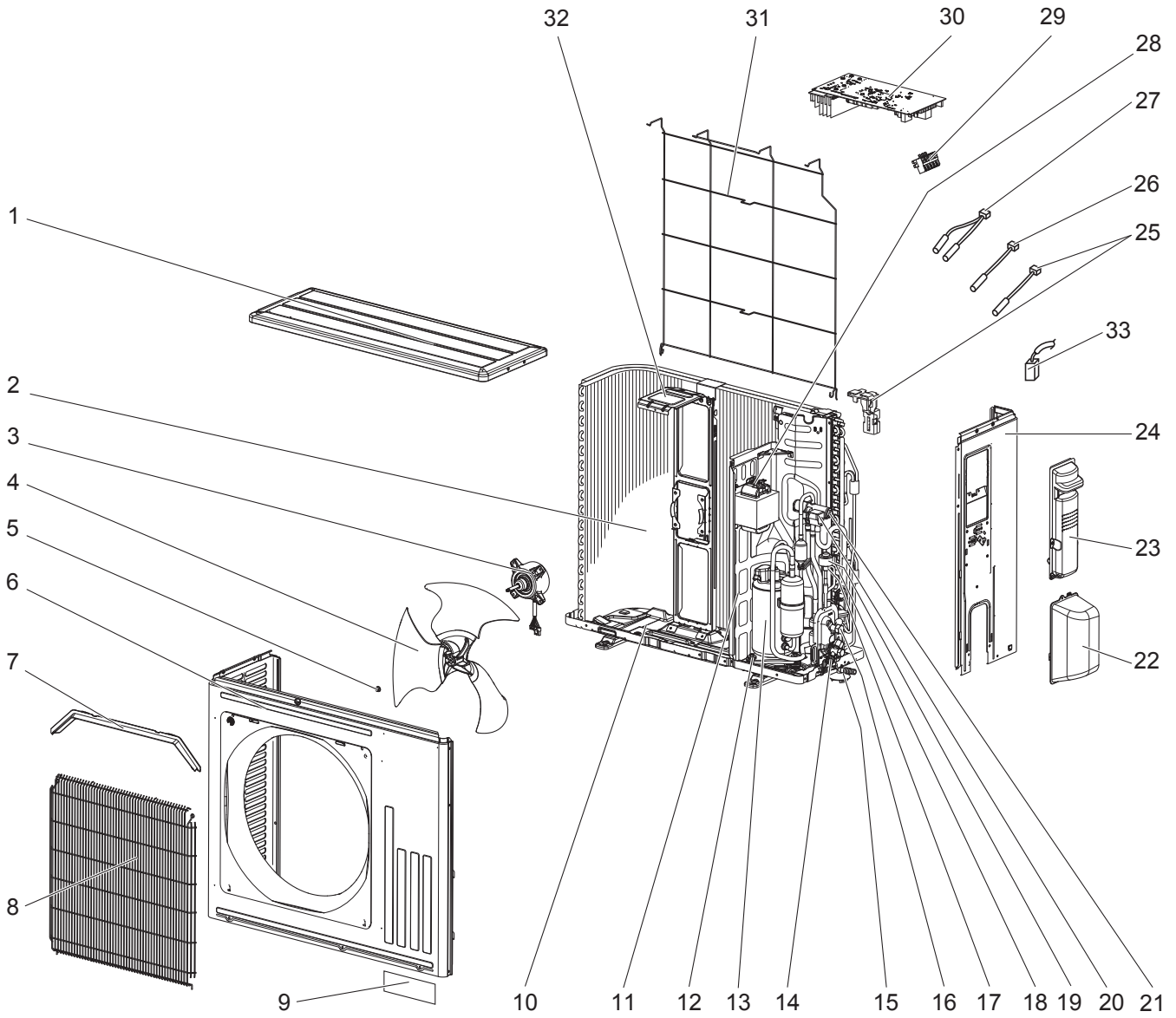
## 1-23. OUTDOOR UNIT STRUCTURAL PARTS, ELECTRICAL PARTS AND FUNCTIONAL PARTS

1. The part quantity below indicates the required number of pieces per unit.
2. The circled No. indicates that the part is not shown in the figure.

No.	Part No.	Part Name	MUZ-AP60VG - E1	MUZ-AP60VG - E1	MUZ-AP60VG - E1	MUZ-AP60VG - E2	Symbol in Wiring Diagram	Remarks [Drawing No.]
1	E22 Y86 297	TOP PANEL	1	1	1	1		
2	E22 Y86 630	OUTDOOR HEAT EXCHANGER	1	1	1	1		
3	E22 Y86 301	OUTDOOR FAN MOTOR	1	1	1	1	MF	RC0J50-□□
4	E22 Y86 501	PROPELLER FAN	1	1	1	1		
5	E27 L05 508	PROPELLER FAN NUT	1	1	1	1		
6	E22 Y86 232	CABINET	1	1	1	1		
7	E22 Y86 531	ICE GUARD	1	1	1	1		
8	E22 Y86 521	GRILLE	1	1	1	1		
9	—	BRAND LABEL	1	1	1	1		[ DK79G041H02 ]
10	E22 Y84 290	BASE	1	1	1	1		
11	E22 Y86 293	SEPARATOR	1	1	1	1		
12	E22 C34 506	COMPRESSOR RUBBER SET	3	3	3	3		3 RUBBERS/SET
13	E22 R83 900	COMPRESSOR	1	1	1	1	MC	SVB130FBBMT
14	E22 22A 661	STOP VALVE (GAS)	1	1	1	1		ø12.7
15	E22 838 704	DRAIN SOCKET	1	1	1	1		
16	E22 Y86 662	STOP VALVE (LIQUID)	1	1	1	1		ø6.35
17	E22 Y84 640	EXPANSION VALVE	1	1	1	1		
18	E22 Y84 493	EXPANSION VALVE COIL	1	1	1	1	LEV	
19	E22 41G 645	EXPANSION VALVE ASSEMBLY	1	1	1	1		[ SQ00J870G06 ] Includes LEV body, Capillary tube (ø4.0 × ø2.4 × 240)
20	E22 Y86 490	R.V. COIL	1	1	1	1	21S4	
21	E22 J44 961	4-WAY VALVE	1	1	1	1		
22	E22 Y86 650	VALVE COVER	1	1	1	1		
23	E22 Y86 245	SERVICE PANEL	1	1	1	1		
24	E22 Y86 233	BACK PANEL	1	1	1	1		
25	E22 Y86 309	AMBIENT TEMPERATURE THERMISTOR	1	1	1	1	RT65	Includes thermo holder
26	E22 C34 307	OUTDOOR HEAT EXCHANGER TEMPERATURE THERMISTOR	1	1	1	1	RT68	
27	E22 Y86 306	THERMISTOR SET	1	1	1	1	RT61, RT62	DEFROST, DISCHARGE TEMPERATURE
28	E22 H21 337	REACTOR	1	1	1	1	L61	
29	E22 T95 374	TERMINAL BLOCK	1	1	1	1	TB1	5 P
30	E22 61H 451	INVERTER P.C. BOARD	1	1	1	1		Includes heat sink and RT64
31	E22 Y86 525	CONDENSER WIRE NET	1	1	1	1		
32	E22 Y86 515	MOTOR SUPPORT	1	1	1	1		
33	—	PB SUPPORT	1	1	1	1		[ RK00A627G01 ]
34	—	PB COVER	1	1	1	1		[ DY00B947G02 ]
35	—	COMPRESSOR LEAD WIRE	1	1	1	1		[ DY78C464G02 ]
36	—	COMPRESSOR FELT (TOP)	1	1	1	1		[ SQ33J842H03 ]
37	—	COMPRESSOR FELT (BODY)	1	1	1	1		[ SQ33Y585H02 ]
38	—	COMPRESSOR FELT (OUTER)	1	1	1	1		[ SG33V226H04 ]

MUZ-AP60VG -ET2, E3

1-24. OUTDOOR UNIT STRUCTURAL PARTS, ELECTRICAL PARTS AND FUNCTIONAL PARTS





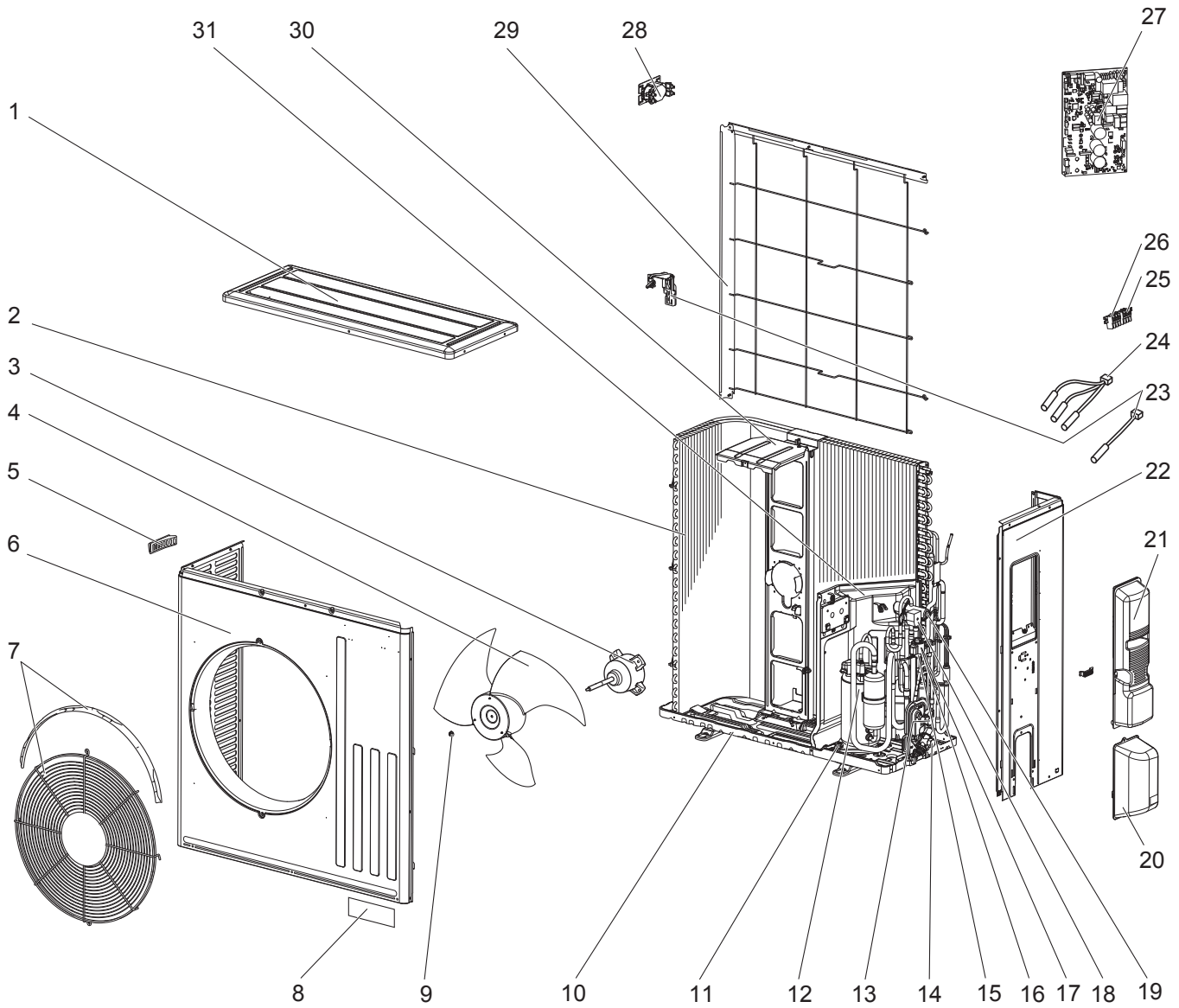
## 1-24. OUTDOOR UNIT STRUCTURAL PARTS, ELECTRICAL PARTS AND FUNCTIONAL PARTS

1. The part quantity below indicates the required number of pieces per unit.
2. The circled No. indicates that the part is not shown in the figure.

No.	Part No.	Part Name	MUZ-AP60VG - [E2]	MUZ-AP60VG - [E3]	Symbol in Wiring Diagram	Remarks [Drawing No.]
1	E22 Y86 297	TOP PANEL	1	1		
2	E22 Y86 630	OUTDOOR HEAT EXCHANGER	1	1		
3	E22 Y86 301	OUTDOOR FAN MOTOR	1	1	MF	RC0J50-□□
4	E22 Y86 501	PROPELLER FAN	1	1		
5	E27 L05 508	PROPELLER FAN NUT	1	1		
6	E22 Y86 232	CABINET	1	1		
7	E22 Y86 531	ICE GUARD	1	1		
8	E22 Y86 521	GRILLE	1	1		
9	—	BRAND LABEL	1	1		[ DK79G041H02 ]
10	E22 44P 290	BASE	1	1		
11	E22 3A2 293	SEPARATOR	1	1		
12	E22 C34 506	COMPRESSOR RUBBER SET	3	3		3 RUBBERS/SET
13	E22 46W 900	COMPRESSOR	1	1	MC	SVB130FBBMT
14	E22 22A 661	STOP VALVE (GAS)	1	1		ø12.7
15	E22 838 704	DRAIN SOCKET	1	1		
16	E22 Y86 662	STOP VALVE (LIQUID)	1	1		ø6.35
17	E22 Y84 640	EXPANSION VALVE	1	1		
18	E22 Y84 493	EXPANSION VALVE COIL	1	1	LEV	
19	E22 41G 645	EXPANSION VALVE ASSEMBLY	1	1		[ SQ00J870G06 ] Includes LEV body, Capillary tube (ø4.0 × ø2.4 × 240)
20	E22 Y86 490	R.V. COIL	1	1	21S4	
21	E22 J44 961	4-WAY VALVE	1	1		
22	E22 Y86 650	VALVE COVER	1	1		
23	E22 Y86 245	SERVICE PANEL	1	1		
24	E22 Y86 233	BACK PANEL	1	1		
25	E22 Y86 309	AMBIENT TEMPERATURE THERMISTOR	1	1	RT65	Includes thermo holder
26	E22 C34 307	OUTDOOR HEAT EXCHANGER TEMPERATURE THERMISTOR	1	1	RT68	
27	E22 Y86 306	THERMISTOR SET	1	1	RT61, RT62	DEFROST, DISCHARGE TEMPERATURE
28	E22 60V 337	REACTOR	1	1	L61	
29	E22 T95 374	TERMINAL BLOCK	1	1	TB1	5 P
30	E22 2F8 451	INVERTER P.C. BOARD	1	1		Includes heat sink and RT64
31	E22 Y86 525	CONDENSER WIRE NET	1	1		
32	E22 Y86 515	MOTOR SUPPORT	1	1		
33	E22 41X 381	COMPRESSOR PROTECTOR	1	1	26C	
(34)	—	PB SUPPORT	1	1		[ RK00A627G01 ]
(35)	—	PB COVER	1	1		[ DY00B947G02 ]
(36)	—	COMPRESSOR LEAD WIRE	1	1		[ DY78C464G02 ]
(37)	—	COMPRESSOR FELT (TOP)	1	1		[ SQ33J842H03 ]
(38)	—	COMPRESSOR FELT (BODY)	1	1		[ SQ33Y585H02 ]
(39)	—	COMPRESSOR FELT (OUTER)	1	1		[ SG33V226H04 ]

MUZ-AP71VG -E1, ET1, ER1, E2

1-25. OUTDOOR UNIT STRUCTURAL PARTS, ELECTRICAL PARTS AND FUNCTIONAL PARTS



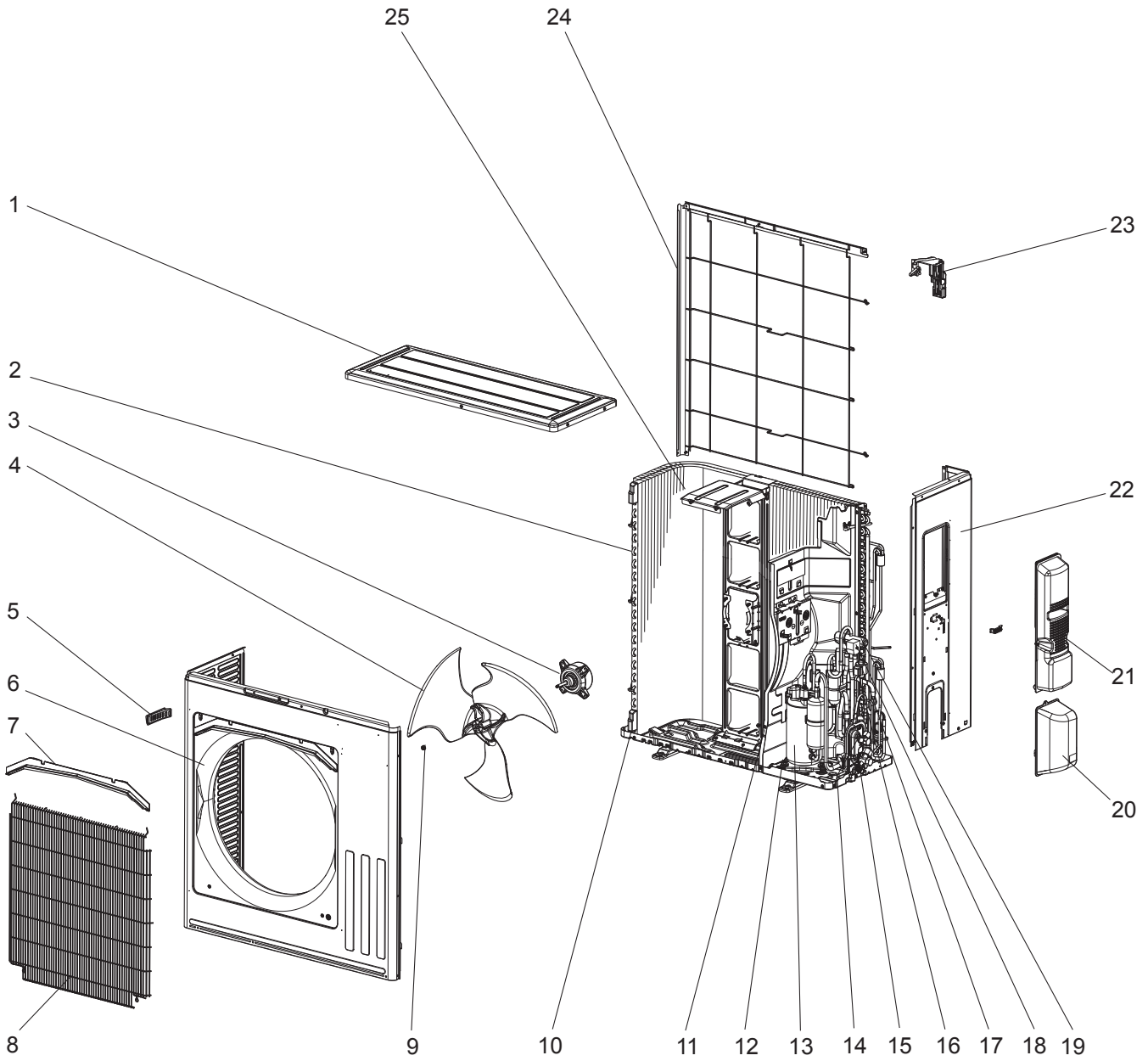
## 1-25. OUTDOOR UNIT STRUCTURAL PARTS, ELECTRICAL PARTS AND FUNCTIONAL PARTS

1. The part quantity below indicates the required number of pieces per unit.
2. The circled No. indicates that the part is not shown in the figure.

No.	Part No.	Part Name	MUZ-AP71VG- <sup>E1</sup>	MUZ-AP71VG- <sup>E1</sup>	MUZ-AP71VG- <sup>ER1</sup>	MUZ-AP71VG- <sup>E2</sup>	Symbol in Wiring Diagram	Remarks [Drawing No.]
1	E22 L87 297	TOP PANEL	1	1	1	1		
2	E22 67H 630	OUTDOOR HEAT EXCHANGER	1	1	1	1		
3	E22 42G 301	OUTDOOR FAN MOTOR	1	1	1	1	MF	RC0J77-□□
4	E22 F28 501	PROPELLER FAN	1	1	1	1		
5	E22 817 009	HANDLE	1	1	1	1		
6	E22 R13 232	CABINET	1	1	1	1		
7	E22 Y87 521	FAN GUARD	1	1	1	1		Includes ice guard
8	—	BLAND LABEL	1	1	1	1		[ DK79G041H02 ]
9	E27 L05 508	PROPELLER FAN NUT	1	1	1	1		
10	E22 F28 290	BASE	1	1	1	1		
11	E22 C34 506	COMPRESSOR RUBBER SET	3	3	3	3		3 RUBBERS/SET
12	E22 R86 900	COMPRESSOR	1	1	1	1	MC	SVB172FCKMT
13	E22 G16 662	STOP VALVE (LIQUID)	1	1	1	1		ø6.35
14	E22 G16 661	STOP VALVE (GAS)	1	1	1	1		ø12.7
15	E22 Y84 640	EXPANSION VALVE	1	1	1	1		
16	E22 Y87 493	EXPANSION VALVE COIL	1	1	1	1	LEV	
17	E27 M74 645	EXPANSION VALVE ASSEMBLY	1	1	1	1		[ SQ00J608G06 ] Includes LEV body, Capillary tube (ø4.0 × ø2.4 × 100)
18	E22 R84 490	R.V. COIL	1	1	1	1	21S4	
19	E22 J44 961	4-WAY VALVE	1	1	1	1		
20	E22 F28 650	VALVE COVER	1	1	1	1		
21	E22 Y87 245	SERVICE PANEL	1	1	1	1		
22	E22 J52 233	BACK PANEL	1	1	1	1		
23	E22 29F 309	AMBIENT TEMPERATURE THERMISTOR	1	1	1	1	RT65	Includes thermo holder
24	E22 R84 308	THERMISTOR SET	1	1	1	1	RT61, RT62, RT68	DEFROST, DISCHARGE TEMPERATURE, OUTDOOR HEAT EXCHANGER TEMPERATURE
25	E22 F29 374	TERMINAL BLOCK	1	1	1	1	TB1	3 P
26	E22 T16 374	TERMINAL BLOCK	1	1	1	1	TB2	3 P
27	E22 67H 451	INVERTER P.C. BOARD	1	1	1	1		Includes heat sink and RT64
28	E22 R84 337	REACTOR	1	1	1	1	L	
29	E22 L87 523	CONDENSER NET	1	1	1	1		
30	E22 F28 515	MOTOR SUPPORT	1	1	1	1		
31	E27 K72 293	SEPARATOR	1	1	1	1		
③②	E22 F28 704	DRAIN SOCKET	1	1	1	1		
③③	—	ELECTRICAL PARTS BOX	1	1	1	1		[ SQ00J359G18 ]
③④	—	COMPRESSOR LEAD ASSEMBLY	1	1	1	1		[ VM00C604G05 ]
③⑤	—	COMPRESSOR FELT (TOP)	1	1	1	1		[ DQ33N559H03 ]
③⑥	—	COMPRESSOR FELT (BODY)	1	1	1	1		[ SU33V325H03 ]

MUZ-AP71VG2 -<sup>E1</sup>, <sup>ET1</sup>

1-26. OUTDOOR UNIT STRUCTURAL PARTS AND FUNCTIONAL PARTS



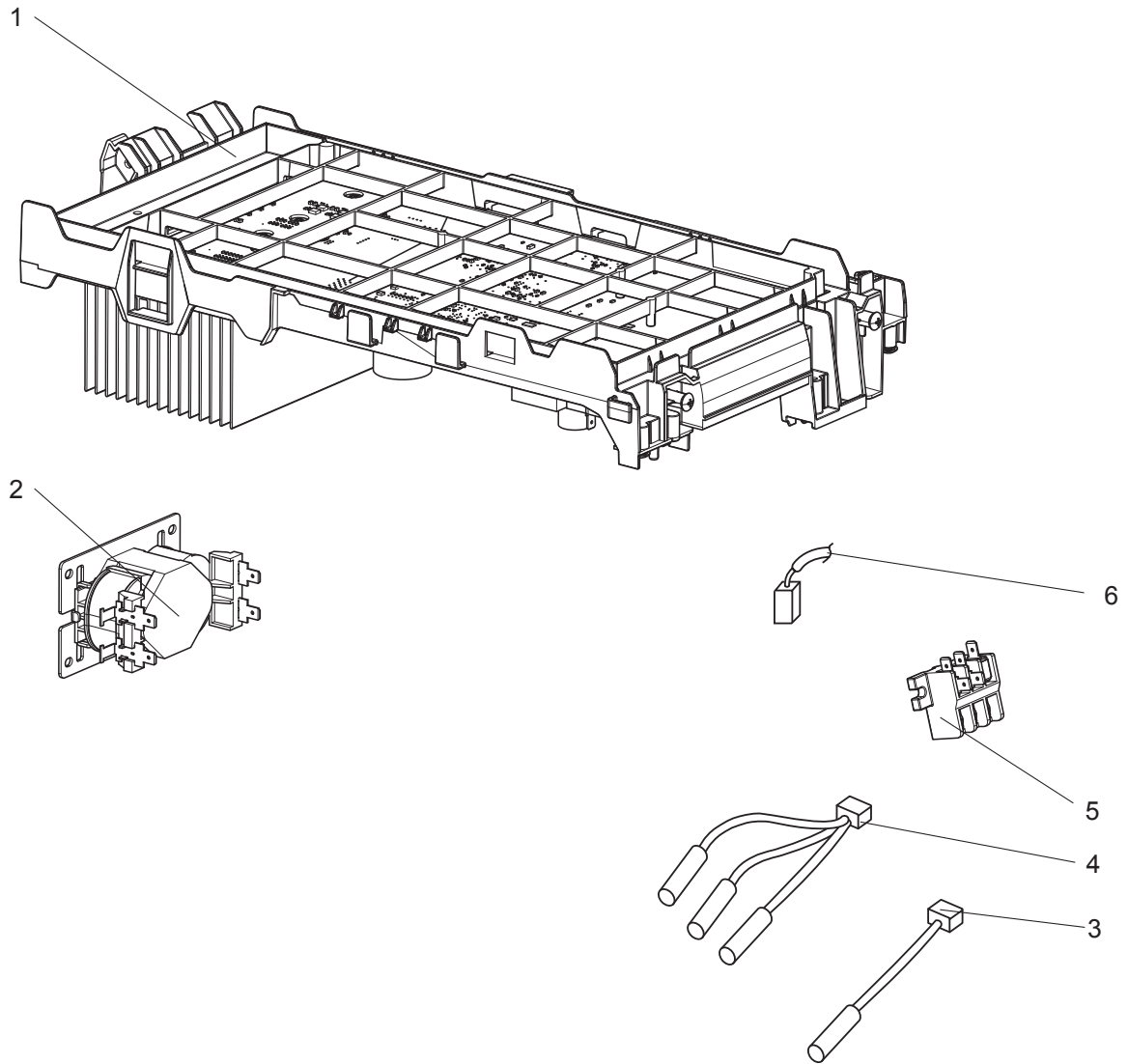
## 1-26. OUTDOOR UNIT STRUCTURAL PARTS AND FUNCTIONAL PARTS

1. The part quantity below indicates the required number of pieces per unit.
2. The circled No. indicates that the part is not shown in the figure.

No.	Part No.	Part Name	MUZ-AP71VG2- <sup>ET</sup>	MUZ-AP71VG2- <sup>ET</sup>	Symbol in Wiring Diagram	Remarks
1	E22 L87 297	TOP PANEL	1	1		
2	E22 77R 630	OUTDOOR HEAT EXCHANGER	1	1		
3	E22 3D5 301	OUTDOOR FAN MOTOR	1	1	MF	RC0J55-□□
4	E22 91F 501	PROPELLER FAN	1	1		
5	E22 817 009	HANDLE	1	1		
6	E22 91F 232	CABINET	1	1		
7	E22 33N 531	ICE GUARD	1	1		
8	E22 91F 521	GRILLE	1	1		
9	E27 L05 508	PROPELLER FAN NUT	1	1		
10	E22 52V 290	BASE	1	1		
11	E22 91F 293	SEPARATOR	1	1		
12	E22 C34 506	COMPRESSOR RUBBER SET	3	3		3 RUBBERS/SET
13	E22 56W 900	COMPRESSOR	1	1	MC	SVB172FCKMT
14	E22 77R 662	STOP VALVE (LIQUID)	1	1		ø6.35
15	E22 G16 661	STOP VALVE (GAS)	1	1		ø12.7
16	E22 77R 645	EXPANSION VALVE ASSEMBLY	1	1		Includes LEV body, Capillary tube (ø4.0 × ø2.4 × 100)
17	E22 77R 493	EXPANSION VALVE COIL	1	1	LEV	
18	E22 33N 490	R.V. COIL	1	1	21S4	
19	E22 75R 961	4-WAY VALVE	1	1		
20	E22 F28 650	VALVE COVER	1	1		
21	E22 91F 245	SERVICE PANEL	1	1		
22	E22 77R 233	BACK PANEL	1	1		
23	E22 F28 079	THERMO HOLDER	1	1		
24	E22 L87 523	CONDENSER NET	1	1		
25	E22 59N 515	MOTOR SUPPORT	1	1		
26	E27 Y91 936	CAPILLARY TUBE	1	1		ø4.0 × ø2.4 × 100
27	E22 77R 640	EXPANSION VALVE	1	1		LEV body
28	E22 F28 704	DRAIN SOCKET	1	1		

MUZ-AP71VG2 -[E1], [ET1]

1-27. OUTDOOR UNIT ELECTRICAL PARTS



## 1-27. OUTDOOR UNIT ELECTRICAL PARTS

1. The part quantity below indicates the required number of pieces per unit.

No.	Part No.	Part Name	MUZ-AP71VG2- <sup>ET</sup>	MUZ-AP71VG2- <sup>ET1</sup>	Symbol in Wiring Diagram	Remarks
1	E22 2F9 451	INVERTER P.C. BOARD	1	1		Includes heat sink and RT64
2	E22 R84 337	REACTOR	1	1	L	
3	E22 49P 309	AMBIENT TEMPERATURE THERMISTOR	1	1	RT65	Includes thermo holder
4	E22 F28 308	THERMISTOR SET	1	1	RT61, RT62, RT68	DEFROST, DISCHARGE TEMPERATURE, OUTDOOR HEAT EXCHANGER TEMPERATURE
5	E22 T95 374	TERMINAL BLOCK	1	1	TB1	5 P
6	E22 42X 381	COMPRESSOR PROTECTOR	1	1	26C	

# **mitsubishi electric corporation**

HEAD OFFICE: TOKYO BUILDING, 2-7-3, MARUNOUCHI, CHIYODA-KU, TOKYO 100-8310, JAPAN

© Copyright 2017 MITSUBISHI ELECTRIC CORPORATION

Issued: Sep. 2023. No. OBB789 REVISED EDITION-G

Issued: Jan. 2021. No. OBB789 REVISED EDITION-F

Issued: Nov. 2020. No. OBB789 REVISED EDITION-E

Issued: Aug. 2020. No. OBB789 REVISED EDITION-D

Issued: Dec. 2019. No. OBB789 REVISED EDITION-C

Issued: Jul. 2019. No. OBB789 REVISED EDITION-B

Issued: Mar. 2019. No. OBB789 REVISED EDITION-A

Published: Dec. 2017. No. OBB789

Made in Japan

Specifications are subject to change without notice.