

# CMB-WM108/1016V-BB Sub-HBC for Horizontal & Vertical Layout

CITY MULTI

**City Multi Hybrid VRF** is an energy-efficient 2-pipe heat recovery VRF system, whereby the outdoor unit is connected to a Hybrid Branch Controller (HBC) and water pipework is used between the indoor unit & HBC.

With the refrigerant layout reduced, this revolutionary design minimises the need for leak detection and provides simultaneous heating and cooling to the occupied space.

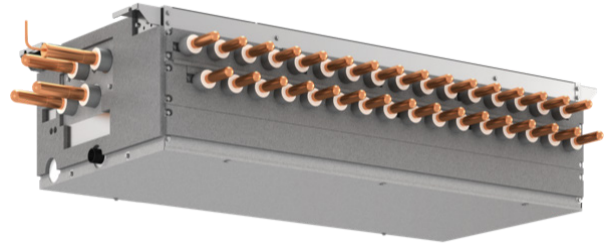
**R32 R410A**

## Key Features & Benefits:

- Light & compact units with less service space requirements, for easy commissioning, service & maintenance
- Contains no noise sensitive elements allowing for flexible installation e.g. in occupied spaces
- Simple design and installation layout with no requirement for additional water ancillaries such as an expansion vessel and a water-filling loop connection



**R32 R410A**

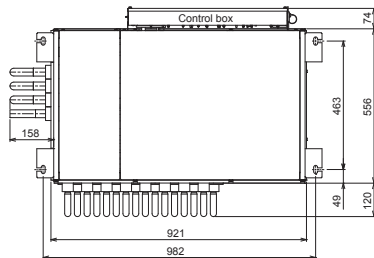


SUB HBC CONTROLLERS	CMB-WM108V-BB	CMB-WM1016V-BB
NUMBER OF CONNECTIONS	8	16
ORIENTATION	Horizontal	Horizontal
COMPATIBILITY	R32 / R410A	R32 / R410A
WEIGHT (kg)	40 (45)*	53 (62)*
DIMENSIONS (mm) Width x Depth (Control Box) x Height	930 x 540 (630) x 310	1210 x 540 (630) x 310
ELECTRICAL SUPPLY	220-240v, 50Hz	220-240v, 50Hz
PHASE	Single	Single
POWER INPUT (kW)	0.01	0.01
RUNNING CURRENT (A)	0.14	0.14
FUSE RATING (BS88) - HRC (A)	6	6
MAINS CABLE NO. CORES	3	3

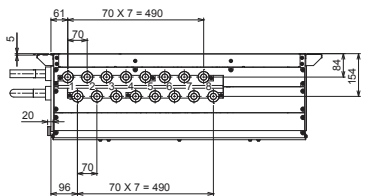
**Notes:**  
 CMB-WM-V-AA (Main) and CMB-WM-V-BB (Sub) units are for use with PURY-(E)M200-500YNW-A1, PORY-P200-500YLM-A1 outdoor/condenser units and HVRF indoor units only. CMB-WM-F-AA (Main) and CMB-WM-V-BB (Sub) units are for use with PURY-(E)M200-500YNW-A1 outdoor units and HVRF indoor units only.  
 One CMB-WM-V-AA unit can be used on PURY-(E)M200-250YNW-A1 and PORY-P200-250YNW-A1 units. One CMB-WM-V-AA unit can be used on PURY-(E)M300-350YNW-A1 and PORY-P300-350YLM-A1 units with a system efficiency reduction.  
 Two CMB-WM-V-AA units can be used in parallel on PURY-(E)M300-500YNW-A1 and PORY-P300-500YLM-A1 outdoor/condenser units. PURY-(E)M400-500YNW-A1 requires two CMB-WM-V-AA units.  
 One CMB-WM-F-AA can only be used on PURY-(E)M200-500YNW-A1 outdoor units.  
 A CMB-WM-V-AA and a CMB-WM-F-AA cannot be connected to the same R32 outdoor unit.  
 CMB-WM-V-BB units are for use with PURY-(E)M200-500YNW-A1, PORY-P200-500YLM-A1 outdoor/condenser units and HVRF indoor units only, when accompanied by a CMB-WM-V-AA or CMB-WM-F-AA unit.  
 (\*) Includes Water

**DIMENSIONS CMB-WM108V-BB**

UPPER VIEW

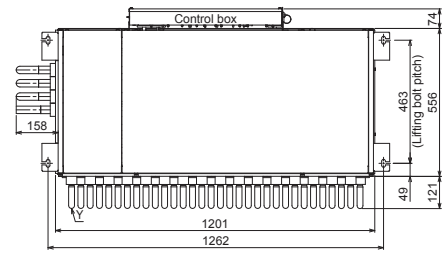


SIDE VIEW

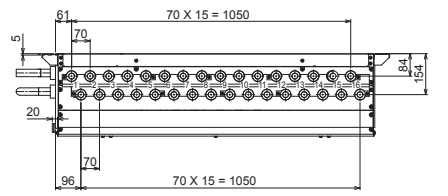


**DIMENSIONS CMB-WM1016V-BB**

UPPER VIEW



SIDE VIEW



Telephone: 01707 282880  
 email: [air.conditioning@meuk.mee.com](mailto:air.conditioning@meuk.mee.com)  
[les.mitsubishielectric.co.uk](http://les.mitsubishielectric.co.uk)

- @meuk\_les @green\_gateway
- Mitsubishi Electric Living Environmental Systems UK
- Mitsubishi Electric Cooling and Heating UK
- mitsubishielectricuk\_les
- Mitsubishi Electric Living Environmental Systems UK
- BLOG thehub.mitsubishielectric.co.uk

**UNITED KINGDOM Mitsubishi Electric Europe Living Environment Systems Division**, Travellers Lane, Hatfield, Hertfordshire, AL10 8XB, England. Telephone: 01707 282880  
**IRELAND Mitsubishi Electric Europe**, Westgate Business Park, Ballymount, Dublin 24, Ireland. Telephone: (01) 419 8800 International code: (003531)

Country of origin: United Kingdom - Italy - Turkey - Japan - Thailand - Malaysia. ©Mitsubishi Electric Europe 2024. Mitsubishi and Mitsubishi Electric are trademarks of Mitsubishi Electric Europe B.V. The company reserves the right to make any variation in technical specification to the equipment described, or to withdraw or replace products without prior notification or public announcement. Mitsubishi Electric is constantly developing and improving its products. All descriptions, illustrations, drawings and specifications in this publication present only general particulars and shall not form part of any contract. All goods are supplied subject to the Company's General Conditions of Sale, a copy of which is available on request. Third-party product and brand names may be trademarks or registered trademarks of their respective owners.

Note: The fuse rating is for guidance only and please refer to the relevant databook for detailed specification. It is the responsibility of a qualified electrician/electrical engineer to select the correct cable size and fuse rating based on current regulation and site specific conditions. Mitsubishi Electric's air conditioning equipment and heat pump systems contain a fluorinated greenhouse gas, R410A (GWP:2088), R290 (GWP:3), R32 (GWP:675), R407C (GWP:1774), R134a (GWP:1430), R513A (GWP:631), R454B (GWP:466), R454C (GWP:148), R1234ze (GWP:7) or R1234yf (GWP:4). \*These GWP values are based on Regulation (EU) No 517/2014 from IPCC 4th edition. In case of Regulation (EU) No.626/2011 from IPCC 3rd edition, these are as follows. R410A (GWP:1975), R32 (GWP:550), R407C (GWP:1650) or R134a (GWP:1300).

Effective as of July 2024

