

SYSTEM MASTER BOARD 1*				
	SW1	SW2	SW3	SW4
1	ON	See Control*	See Control*	ON
2	ON	OFF	OFF	ON
3	OFF	OFF	OFF	OFF
4	OFF	OFF	OFF	OFF
5	OFF	OFF	ON	OFF
6	OFF	ON	ON	OFF
7	OFF	OFF	OFF	
8	See Control*	OFF	OFF	

BOARD 2*				
	SW1	SW2	SW3	SW4
	OFF	OFF	OFF	ON
	ON	OFF	OFF	OFF
	OFF	OFF	OFF	OFF
	OFF	OFF	OFF	OFF
	OFF	OFF	OFF	OFF
	OFF	OFF	OFF	OFF
	ON	OFF	OFF	
	OFF	ON	OFF	

BOARD 3*				
	SW1	SW2	SW3	SW4
	OFF	OFF	OFF	ON
	ON	OFF	OFF	OFF
	OFF	OFF	OFF	OFF
	OFF	OFF	OFF	OFF
	OFF	OFF	OFF	OFF
	OFF	OFF	OFF	OFF
	ON	OFF	OFF	
	OFF	ON	OFF	

SW1-3 (OUTDOOR)-ON \* SW1-4 (OUTDOOR)-ON \*  
 \*Please see system control section of the outdoor installation manual for 3 or more units.  
 SW5-5 & SW8-3 (OUTDOOR)-ON SW5-5 & SW8-3 (OUTDOOR)-ON

Wiring Connections (Outputs)	
EQUIPMENT	TERMINAL / FTC6 BOARD
P1	OUT1 TBO.1 1-2 / 2*
P2	OUT1 TBO.1 1-2 / 3*
P3	OUT13 TBO.4 3-4 / 1*

Wiring Connections (Inputs)	
EQUIPMENT	TERMINAL / FTC6 BOARD
P4	OUT3 TBO.1 5-6 / 1*
BOILER	OUT10 TBO.3 1-2 / 1*

Wiring Connections (Inputs)	
EQUIPMENT	TERMINAL / FTC6 BOARD
T1	THW1 CNW12 1-2 / 2*
T2	THW2 CNW12 3-4 / 2*
T3	THW1 CNW12 1-2 / 3*
T4	THW2 CNW12 3-4 / 3*
T5	THW1 CNW12 1-2 / 1*
T6	THW2 CNW12 3-4 / 1*
T7	THW6 TBI.5 7-8 / 1*

Wiring Connections (Inputs)	
EQUIPMENT	TERMINAL / FTC6 BOARD
T8	THW8 TBI.5 3-4 / 1*
T9	THW7 TBI.5 5-6 / 1*
T10	THW9 TBI.5 1-2 / 1*
T11	THWB1 TBI.6 7-8 / 1*
FS1	INA1 TBI.4 1-3 (CN1A) / 2*
FS2	INA1 TBI.4 1-3 (CN1A) / 3*

Power Supply				
EQUIPMENT	STARTING CURRENT	MAX CURRENT	MCB	MIN. CABLE
PUZ-WM50VHA (-BS)	2A	13A	16A	3x1.5mm <sup>2</sup>
PUZ-WM60VAA (-BS)	2A	13A	16A	3x2.5mm <sup>2</sup>
PUZ-WM85VAA (-BS)	2A	22A	25A	3x2.5mm <sup>2</sup>
PUZ-WM112VAA (-BS)	2A	28A	32A	3x4mm <sup>2</sup>
PUZ-HWM140VHA (-BS)	2A	35A	40A	3x6mm <sup>2</sup>
PUZ-HWM140YHA (-BS)	2A	13A	16A	5x1.5mm <sup>2</sup>
PAC-IF072B-E		10A	16A	3x1.5mm <sup>2</sup>

Copyright in this drawing is the property of Mitsubishi Electric. It must not be reproduced nor amended nor used for the execution of any works whether in connection with the proposed works for which it is prepared or otherwise without the express consent in writing of Mitsubishi Electric.  
 All dimensions are in mm unless otherwise stated.  
 For information only, DO NOT SCALE drawing.  
 All works shall be carried out in accordance with the Specification.  
 Contractor must verify all dimensions on site before commencing any work or shop drawings.

LEGEND	
	AAV AUTOMATIC AIR VENT (After removing the air, automatic air vent(s) must be closed)
	IV ISOLATING VALVE
	DOC DRAIN OFF COCK
	NRV NON RETURN VALVE
	PRV/SV PRESSURE RELIEF VALVE/SAFETY VALVE
	STR STRAINER
	FC FLEXIBLE CONNECTION
	PRV PRESSURE REDUCING VALVE
	P PUMP
	T TEMPERATURE SENSOR
	TF1 FILTER/STRAINER
	FS FLOW SENSOR
	BFPD BACK FLOW PREVENTION DEVICE (if fitted)
	TPRV/SV TEMPERATURE PRESSURE RELIEF VALVE/SAFETY VALVE
	FLOW SETTER

HYDRAULIC COMPONENTS SUPPLIED BY MEUK:  
 FLEXIBLE PIPES  
 FLOW SENSOR  
 OPTIONAL HYDRAULIC COMPONENTS SUPPLIED BY MEUK:  
 TF1 FILTER  
 FLOW SETTER

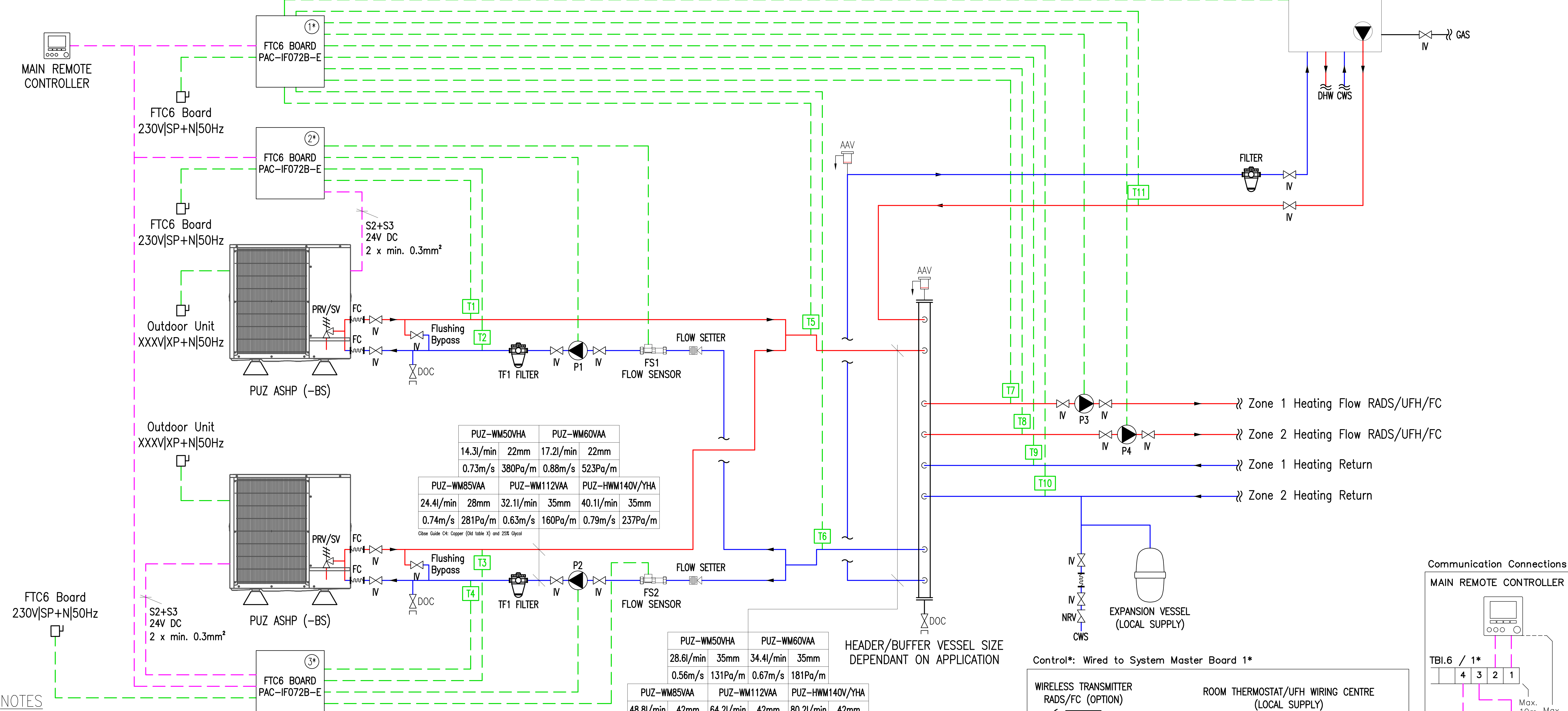
REV	DESCRIPTION	DESN	CHKD	DATE



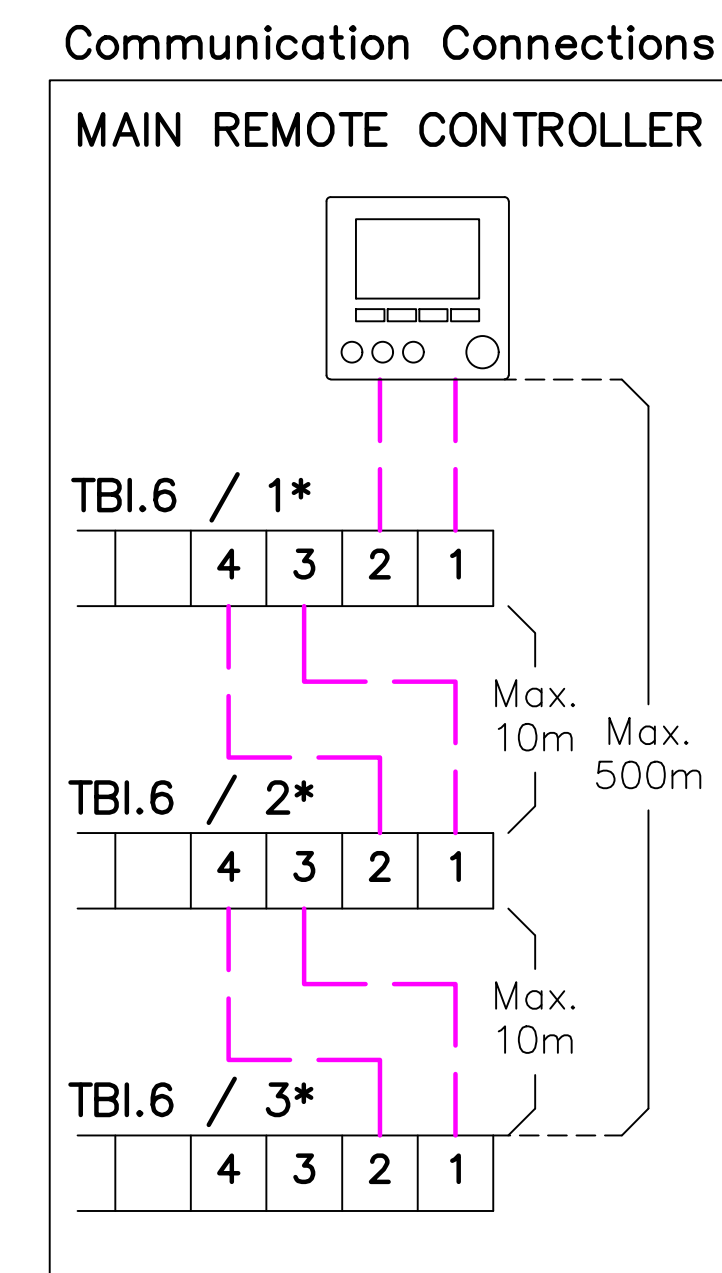
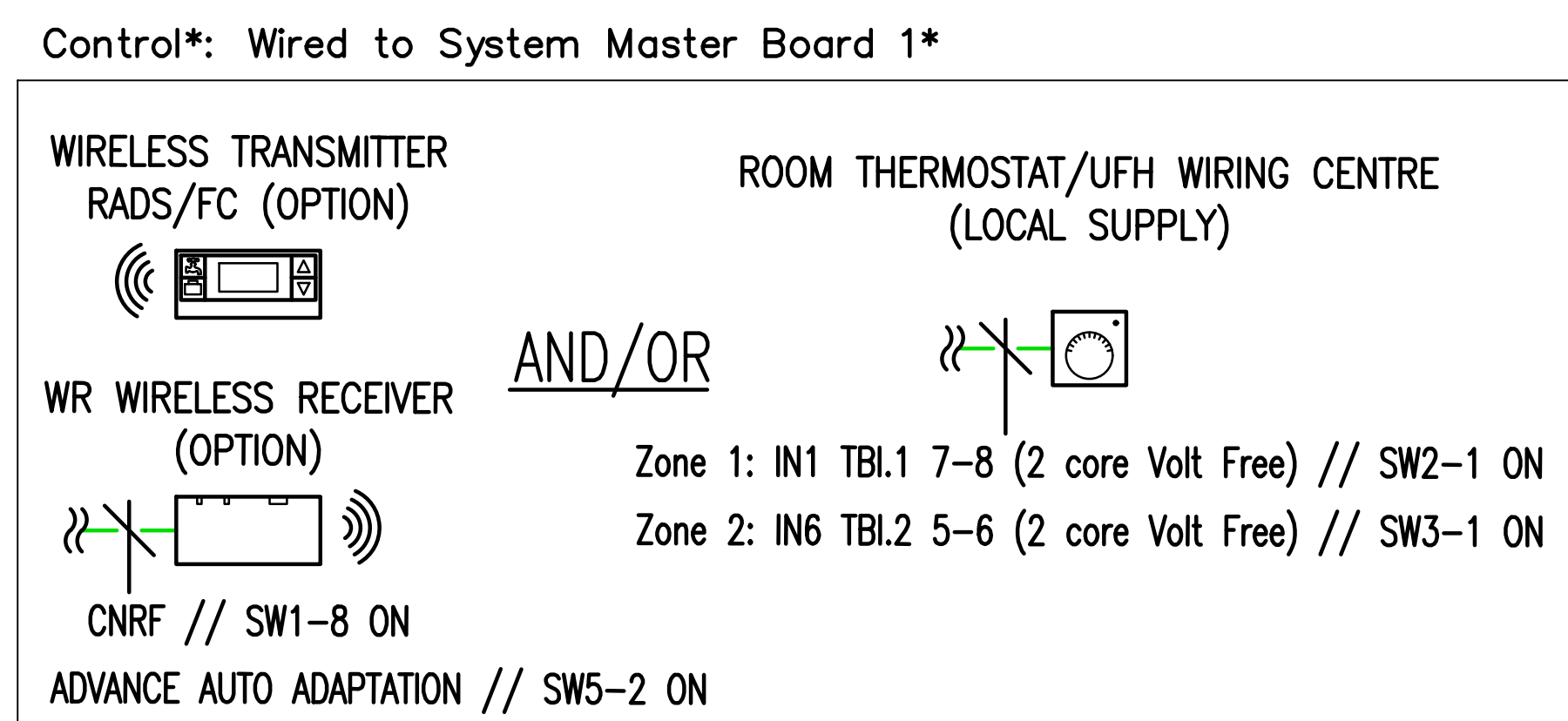
CLIENT  
 PROJECT  
 PUZ-OUTDOOR UNITS  
 STANDARD SCHEMATIC ECODAN CASCADE

TITLE  
 MECHANICAL SERVICES  
 MITSUBISHI 2X FTC6 ECODAN UNITS  
 HYBRID HEATING  
 TO LOW LOSS HEADER/BUFFER VESSEL  
 2 HEATING ZONES  
 SAME FLOW TEMPERATURES

SCALE		ORIGINAL SIZE	DATE	
	NTS	A0	JANUARY 2021	
DRAWN	D. CASADO	DESIGNED	D. CASADO	INIT
DRAWING NUMBER	MEU-UK/FTC6/WMXXX/2Z/H	CHECKED	R. TAYLOR	INIT
				REVISION
				2



- After removing the air, automatic air vent(s) must be closed.
- The Ecodan outdoor unit must be installed on anti-vibration mounts. Rubber mounting blocks are recommended.
- Adequate provision should be made to prevent condensate from collecting around the outdoor units. A soak away or drip tray can be used.
- Flexible hoses shall be used to connect the Ecodan unit to the primary pipe work.
- A flow sensor PAC-F501-E is required to be installed in the return pipe work to each unit. Flow setters are optional and they have the ability to change the flow rates if needed.
- Adequate filtration must be used on the return pipework to each Ecodan outdoor unit. This can be either; Magnetic filter (TF1 supplied by MEUK) or strainer with air dirt separator.
- Boiler PRV/SV to be discharged to outside to discharge any abnormally leaked refrigerant outside of the building.
- It is the responsibility of the installing contractor to provide adequate protection against freezing of pipe work. MEUK recommend 25% glycol dosage of the primary circuit. If the water circuit freezes and damages the equipment the warranty will become void.
- All water systems should be designed, installed and commissioned in accordance with industry good practice guidelines; such as, but not limited to: BSRIA Guide BG2/2010 - Water System Commissioning, BSRIA Guide BG29/2011 - Pre-Commissioning of Pipework Systems, BSRIA Guide BG50/2013 - Water Treatment for Closed Heating & Cooling Systems, CIBSE Commissioning Code W - Water distribution systems.
- Isolation valves and flushing bypass circuit are recommended for the outdoor unit. This is best practice and not required for warranty purposes.
- The contractor should make the necessary arrangements to ensure the design of the system meet the requirement of the application and where possible follow industry guidelines and best practice.
- This schematic must be used in conjunction with the corresponding technical submission document issued by Mitsubishi Electric.



PUZ-WM50VHA		PUZ-WM60VAA	
14.3l/min	22mm	17.2l/min	22mm
0.73m/s	380Pa/m	0.88m/s	523Pa/m

PUZ-WM85VAA		PUZ-WM112VAA		PUZ-HWM140V/YHA	
24.4l/min	28mm	32.1l/min	35mm	40.1l/min	35mm
0.74m/s	281Pa/m	0.63m/s	160Pa/m	0.79m/s	237Pa/m

PUZ-WM50VHA		PUZ-WM60VAA	
28.6l/min	35mm	34.4l/min	35mm
0.56m/s	131Pa/m	0.67m/s	181Pa/m

PUZ-WM85VAA		PUZ-WM112VAA		PUZ-HWM140V/YHA	
48.8l/min	42mm	64.2l/min	42mm	80.2l/min	42mm
0.65m/s	133Pa/m	0.85m/s	215Pa/m	1.06m/s	319Pa/m

Obse Guide C4: Copper (Old table X) and 25% Glycol - This table is only for 2 outdoor units as shown

HEADER/BUFFER VESSEL SIZE DEPENDANT ON APPLICATION