

## INDOOR UNIT

No. OBB958

# PARTS CATALOG

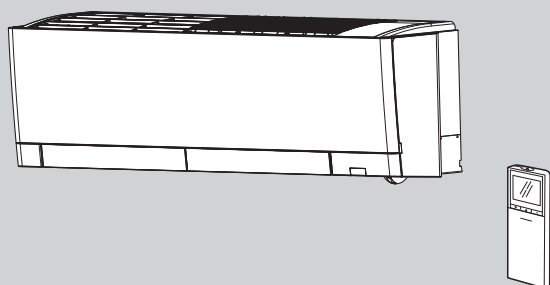
---

### Models

**MSZ-RZ25VU** - **E1**, **SC1**

**MSZ-RZ35VU** - **E1**, **SC1**

**MSZ-RZ50VU** - **E1**, **SC1**



---

### CONTENTS

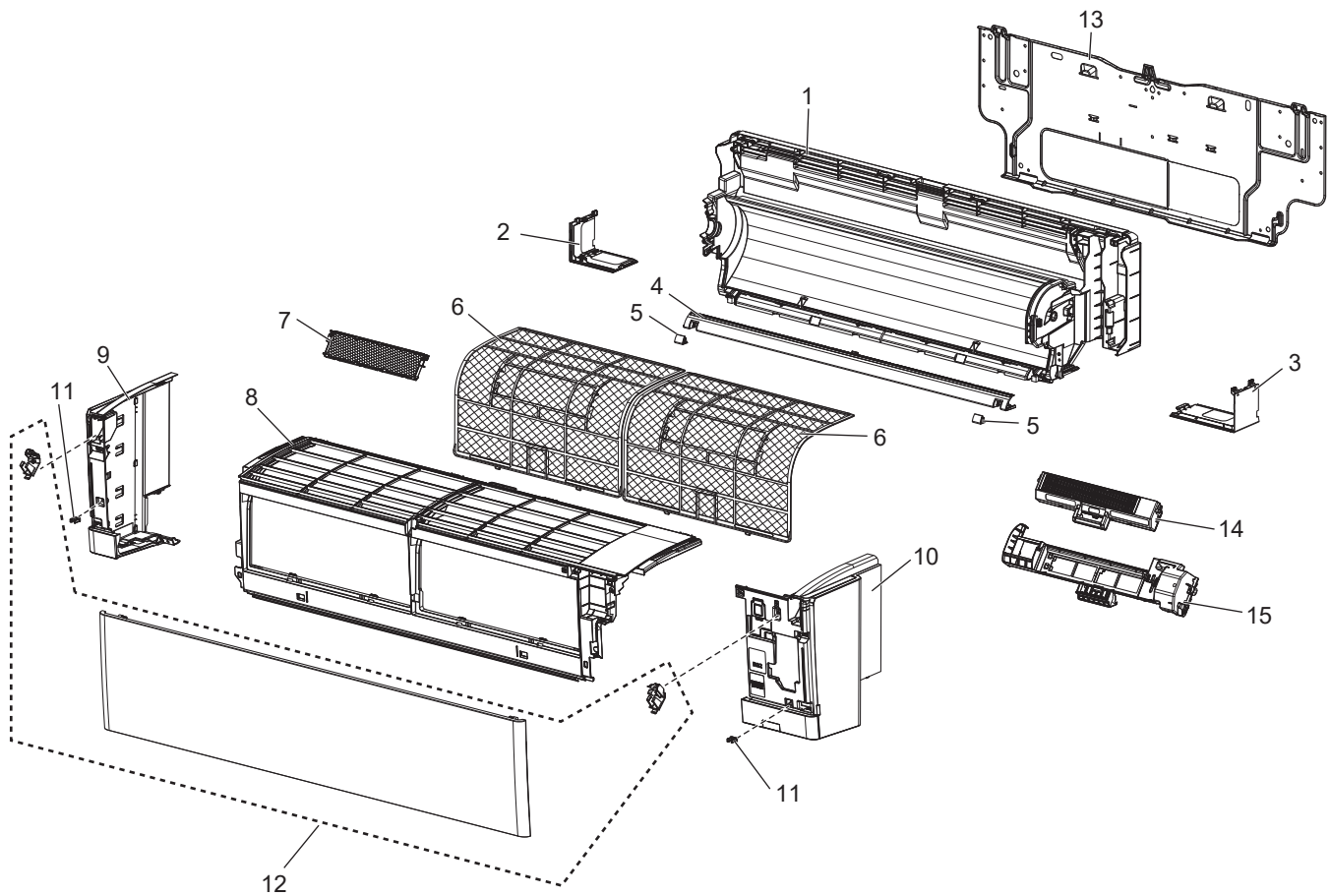
---

- 1. SERVICE PARTS LIST ..... 2
- 2. OPTIONAL PARTS ..... 8

**SERVICE MANUAL (OBH958)**

MSZ-RZ25VU MSZ-RZ35VU MSZ-RZ50VU

## 1-1. INDOOR UNIT STRUCTURAL PARTS



## 1-2. ACCESSORY AND REMOTE CONTROLLER



## 1-1. INDOOR UNIT STRUCTURAL PARTS

1. The part quantity below indicates the required number of pieces per unit.

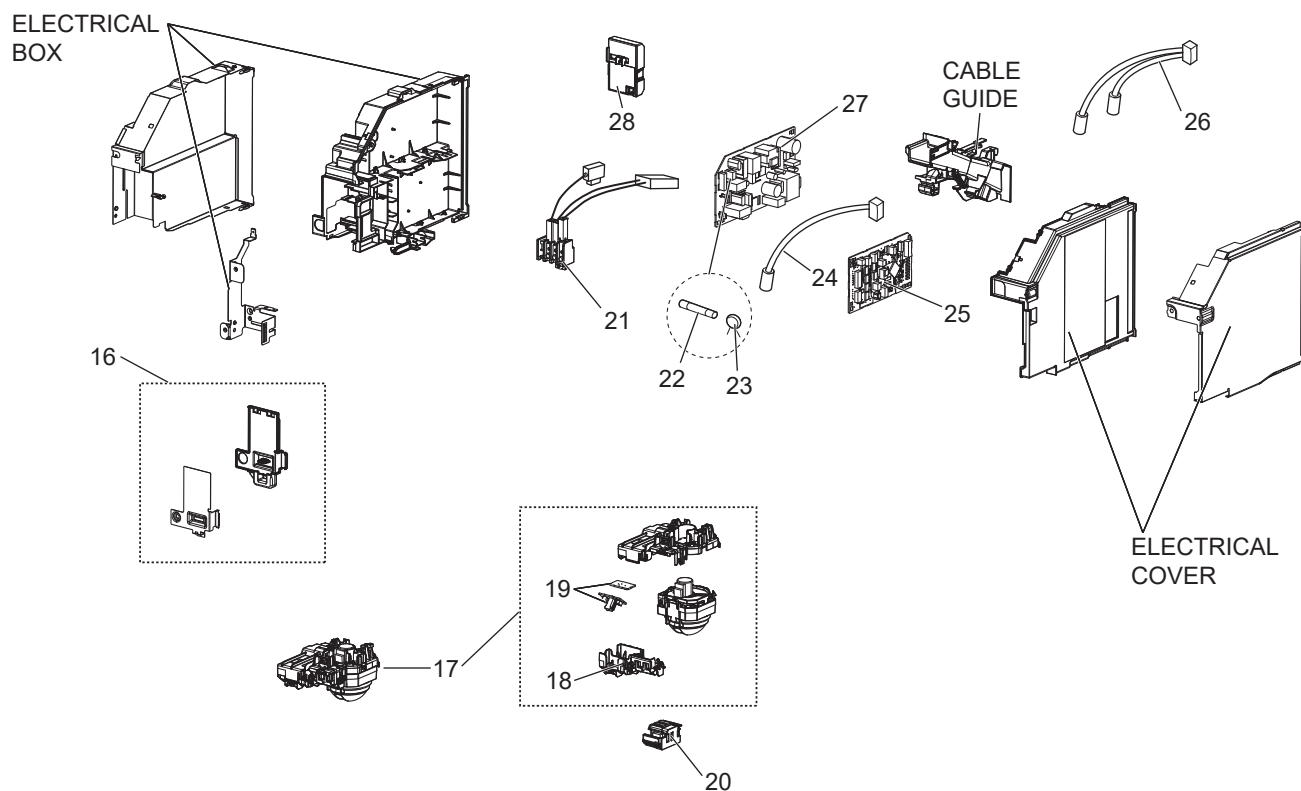
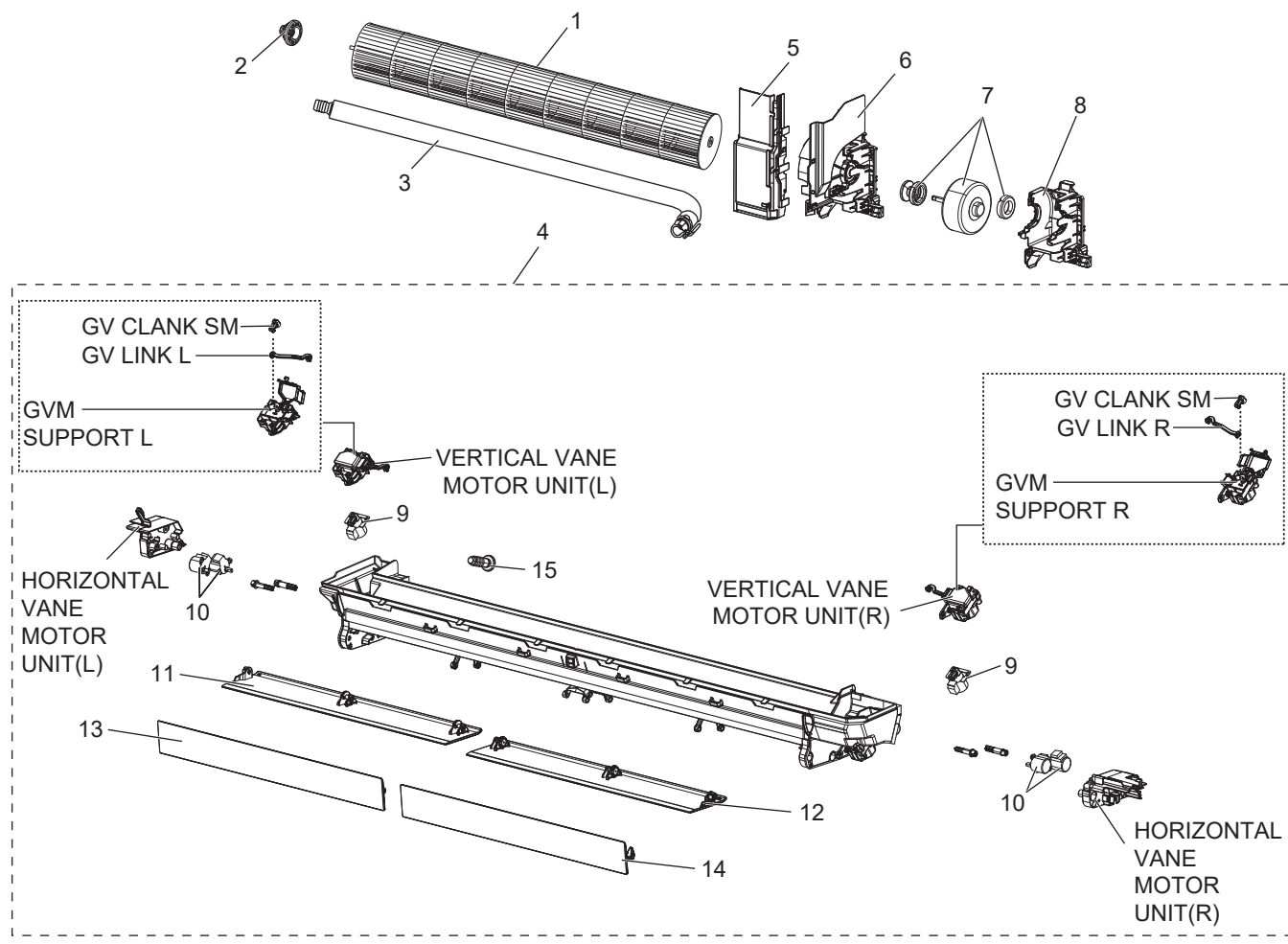
No.	Part No.	Part Name	MSZ-RZ25VU - [E1]	MSZ-RZ35VU - [E1]	MSZ-RZ50VU - [E1]	MSZ-RZ25VU - [SC1]	MSZ-RZ35VU - [SC1]	MSZ-RZ50VU - [SC1]	Symbol in Wiring Diagram	Remarks
1	E22 9J7 234	BOX ASSEMBLY	1	1	1	1	1	1		
2	E22 9J7 976	CORNER BOX (L)	1	1	1	1	1	1		
3	E22 9J7 975	CORNER BOX (R)	1	1	1	1	1	1		
4	E22 69R 717	PANEL(U)	1	1	1	1	1	1		
5	E22 9J7 067	SCREW CAP	2	2	2	2	2	2		2 PCS/SET
6	E22 69R 100	AIR FILTER	2	2	2	2	2	2		1 PC/SET
7	—	AIR CLEANING FILTER (DEODORIZING FILTER)	1	1	1	1	1	1		1 PC/SET
8	E22 9J7 000	PANEL ASSEMBLY (F)	1	1	1	1	1	1		
9	E22 6H7 086	PANEL ASSEMBLY (L)	1	1	1	1	1	1		Includes CATCH
10	E22 9J7 085	PANEL ASSEMBLY (R)	1	1	1	1	1	1		Includes CATCH
11	E22 F95 142	CATCH	2	2	2	2	2	2		2 PCS/SET
12	E22 6H7 010	FRONT PANEL	1	1	1	1	1	1		
13	E22 66R 970	INSTALLATION PLATE	1	1	1					
13	E22 69R 970	INSTALLATION PLATE				1	1	1		
14	E22 Y52 774	AIR PURIFYING DEVICE	1	1	1	1	1	1		
15	E22 9J7 775	AIR PURIFYING DEVICE SUPPORT	1	1	1	1	1	1		Equipped with connecting terminal

## 1-2. ACCESSORY AND REMOTE CONTROLLER

1. The part quantity below indicates the required number of pieces per unit.

No.	Part No.	Part Name	MSZ-RZ25VU - [E1]	MSZ-RZ35VU - [E1]	MSZ-RZ50VU - [E1]	MSZ-RZ25VU - [SC1]	MSZ-RZ35VU - [SC1]	MSZ-RZ50VU - [SC1]	Symbol in Wiring Diagram	Remarks
16	E22 9J7 426	REMOTE CONTROLLER	1	1	1					SH24V
16	E22 0K0 426	REMOTE CONTROLLER				1	1	1		SH24W

**MSZ-RZ25VU    MSZ-RZ35VU    MSZ-RZ50VU**  
**1-3. INDOOR UNIT ELECTRICAL PARTS AND FUNCTIONAL PARTS**



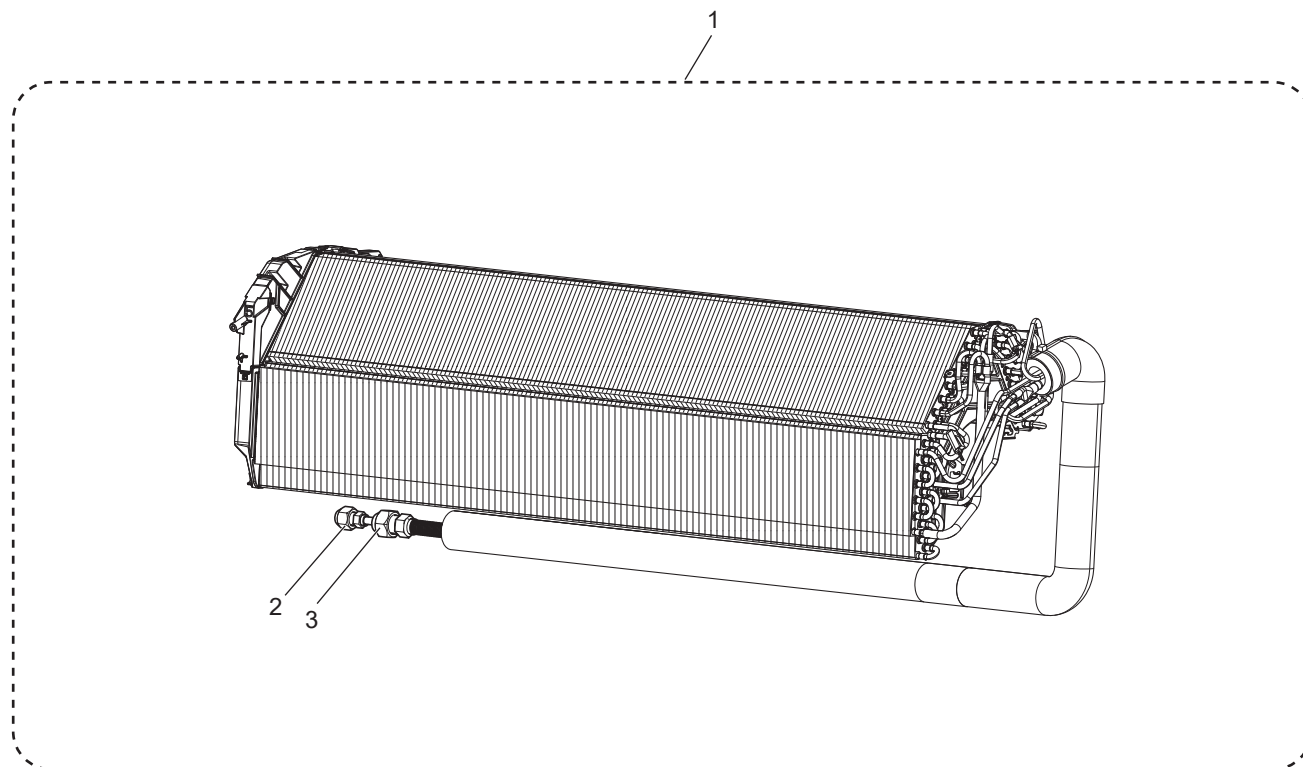
### 1-3. INDOOR UNIT ELECTRICAL PARTS AND FUNCTIONAL PARTS

1. The part quantity below indicates the required number of pieces per unit.

No.	Part No.	Part Name	MSZ-RZ25VU - [E1]	MSZ-RZ35VU - [E1]	MSZ-RZ50VU - [E1]	MSZ-RZ25VU - [SC1]	MSZ-RZ35VU - [SC1]	MSZ-RZ50VU - [SC1]	Symbol in Wiring Diagram	Remarks
1	E22 69R 302	LINE FLOW FAN	1	1	1	1	1	1		
2	E22 A89 509	BEARING MOUNT ASSEMBLY	1	1	1	1	1	1		
3	E22 T20 702	DRAIN HOSE	1	1	1					
3	E22 81J 702	DRAIN HOSE				1	1	1		
4	E22 6H7 235	NOZZLE ASSEMBLY	1	1	1	1	1	1		Full assembly except drain hose
5	E22 69R 541	WATER COVER	1	1	1	1	1	1		
6	E22 69R 333	MOTOR BAND	1	1	1	1	1	1		
7	E22 7C3 300	INDOOR FAN MOTOR	1	1	1	1	1	1	MF	Includes rubber mounts RC0J40-□□
8	E22 70R 333	MOTOR BED	1	1	1	1	1	1		
9	E22 J44 303	VERTICAL VANE MOTOR	2	2	2	2	2	2	MV2	
10	E27 103 303	HORIZONTAL VANE MOTOR	4	4	4	4	4	4	MV1	
11	E22 6H7 041	HORIZONTAL VANE LOWER (L)	1	1	1	1	1	1		
12	E22 6H8 041	HORIZONTAL VANE LOWER (R)	1	1	1	1	1	1		
13	E22 6H7 040	HORIZONTAL VANE UPPER (L)	1	1	1	1	1	1		
14	E22 6H8 040	HORIZONTAL VANE UPPER(R)	1	1	1	1	1	1		
15	E27 42R 705	DRAIN CAP	1	1	1	1	1	1		
16	E22 69R 784	V.A. CLAMP	1	1	1	1	1	1		
17	E22 9J8 391	DISPLAY AND i-see SENSOR ASSEMBLY	1	1	1	1	1	1		Includes i-See Sensor, MT, DISPLAY P.C. BOARD, RECEIVER P.C. BOARD (except REFRIGERANT SENSOR)
18	E22 6H7 095	DISPLAY RECEIVER P.C.B HOLDER	1	1	1	1	1	1		
19	E22 9J7 329	DISPLAY AND RECEIVER P.C. BOARD	1	1	1	1	1	1		DISPLAY P.C. BOARD, RECEIVER P.C. BOARD combined type
20	E22 9J7 391	REFRIGERANT SENSOR	1	1	1	1	1	1		
21	E22 7C3 375	TERMINAL BLOCK	1	1	1	1	1	1	TB	
22	E22 42J 382	FUSE	1	1	1	1	1	1	F11	T3.15AL250V
23	E22 K90 385	VARISTOR	1	1	1	1	1	1	NR11	
24	E22 9J7 308	ROOM TEMPERATURE THERMISTOR	1	1	1	1	1	1	RT11	
25	E22 9J7 452	ELECTRONIC CONTROL P.C. BOARD	1							
25	E22 9J8 452	ELECTRONIC CONTROL P.C. BOARD		1						
25	E22 9J9 452	ELECTRONIC CONTROL P.C. BOARD			1					
25	E22 0K0 452	ELECTRONIC CONTROL P.C. BOARD				1				
25	E22 0K1 452	ELECTRONIC CONTROL P.C. BOARD					1			
25	E22 0K2 452	ELECTRONIC CONTROL P.C. BOARD						1		
26	E22 6H7 307	INDOOR COIL THERMISTOR	1	1		1	1		RT12, RT13	Combined type
26	E22 7H2 307	INDOOR COIL THERMISTOR			1			1	RT12, RT13	Combined type
27	E22 9J7 440	POWER P.C. BOARD	1	1	1	1	1	1		
28	E22 9J7 457	Wi-Fi ASSEMBLY	1	1	1	1	1	1		Includes INTERLOCK SWITCH, SWITCH/BUZZER P.C. BOARD

# MSZ-RZ25VU    MSZ-RZ35VU    MSZ-RZ50VU

## 1-4. INDOOR UNIT HEAT EXCHANGER



1. The part quantity below indicates the required number of pieces per unit.

No.	Part No.	Part Name	MSZ-RZ25VU - [E1]	MSZ-RZ35VU - [E1]	MSZ-RZ50VU - [E1]	MSZ-RZ25VU - [SC1]	MSZ-RZ35VU - [SC1]	MSZ-RZ50VU - [SC1]	Symbol in Wiring Diagram	Remarks
1	E22 9J7 620	INDOOR HEAT EXCHANGER	1	1						
1	E22 9J9 620	INDOOR HEAT EXCHANGER			1					
1	E22 2K0 620	INDOOR HEAT EXCHANGER				1	1			
1	E22 0K2 620	INDOOR HEAT EXCHANGER						1		
2	E22 151 667	UNION (LIQUID)	1	1	1	1	1	1		for liquid ø6.35
3	E22 815 666	UNION (GAS)	1	1		1	1			for gas ø9.52
3	E22 155 666	UNION (GAS)			1			1		for gas ø12.7

## 1-5. AIR PURIFYING DEVICE

### Every 3 months:

- Remove dirt by a vacuum cleaner.

### When dirt cannot be removed by vacuum cleaning:

- Soak the filter together with its frame in lukewarm water and rinse it.
- After washing, dry it well in shade.

**NOTE 1:** Clean the filters regularly for best performance and to reduce power consumption.

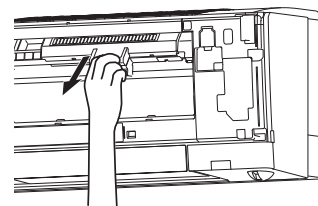
**NOTE 2:** Dirty filters cause condensation in the air conditioner which will contribute to the growth of fungi such as mold. It is therefore recommended to clean air filters every 2 weeks.

**NOTE 3:** Do not touch the i-see sensor.

**NOTE 4:** The air purifying device does not function for safety for a couple minutes after the operation starts or the front panel is opened/closed.

**NOTE 5:** Do not disassemble the air purifying device.

**NOTE 6:** Do not touch any parts other than the frame of the air purifying device.



## 1-6. AIR CLEANING FILTER [DEODORIZING FILTER (BLACK)]

### Every 3 months:

- Remove dirt by a vacuum cleaner, or soak the framed filter in lukewarm water (30 to 40 °C) for about 15 minutes. Rinse well.
- After washing, dry it well in shade.
- Deodorizing feature recovers by cleaning the filter.

### When dirt or smell cannot be removed by cleaning:

- Replace it with a new air cleaning filter.

**NOTE 1:** Clean the filters regularly for best performance and to reduce power consumption.

**NOTE 2:** Dirty filters cause condensation in the air conditioner which will contribute to the growth of fungi such as mold. It is therefore recommended to clean air filters every 2 weeks.

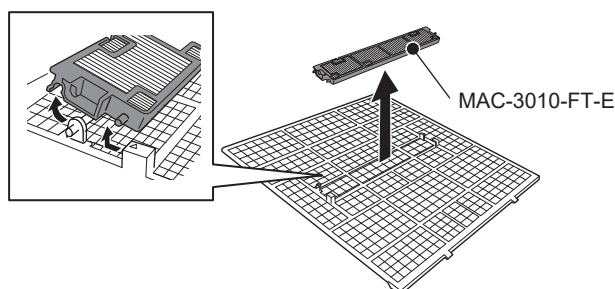
**NOTE 3:** Do not touch the i-see sensor.

**NOTE 4:** The air purifying device does not function for safety for a couple minutes after the operation starts or the front panel is opened/closed.

**NOTE 5:** Do not disassemble the air purifying device.

**NOTE 6:** Do not touch any parts other than the frame of the air purifying device.

Model	Part No.
MSZ-RZ25VU MSZ-RZ35VU MSZ-RZ50VU	MAC-3010FT-E



## 2-1. AIR CLEANING FILTER [V BLOCKING FILTER (GREEN)]

### Every 3 months:

- Remove dirt by a vacuum cleaner.

### When dirt cannot be removed by vacuum cleaning:

- Soak the filter and its frame in lukewarm water before rinsing it.
- After washing, dry it well in shade. Install all tabs of the air filter.

### Every year:

- Replace it with a new air cleaning filter for best performance.

**NOTE 1:** Clean the filters regularly for best performance and to reduce power consumption.

**NOTE 2:** Dirty filters cause condensation in the air conditioner which will contribute to the growth of fungi such as mold. It is therefore recommended to clean air filters every 2 weeks.

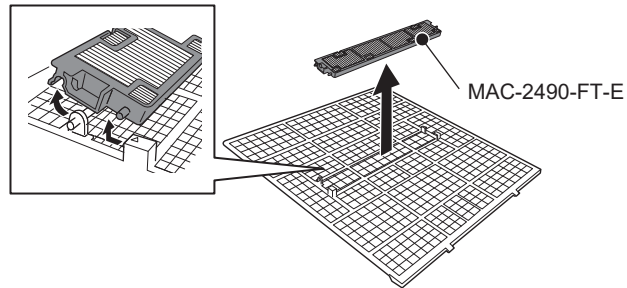
**NOTE 3:** Do not touch the i-see sensor.

**NOTE 4:** The air purifying device does not function for safety for a couple minutes after the operation starts or the front panel is opened/closed.

**NOTE 5:** Do not disassemble the air purifying device.

**NOTE 6:** Do not touch any parts other than the frame of the air purifying device.

Model	Part No.
MSZ-RZ25VU MSZ-RZ35VU MSZ-RZ50VU	MAC-2490FT-E



# MITSUBISHI ELECTRIC CORPORATION

HEAD OFFICE: TOKYO BUILDING, 2-7-3, MARUNOUCHI, CHIYODA-KU, TOKYO 100-8310, JAPAN