

PLFY-MS-VEM2-E

4-Way Blow Ceiling Cassette



The **PLFY-MS-VEM2-E** offers 72 different airflow patterns, with the ability to handle a multitude of ceiling applications up to 4.2 metres in height.

The easy to install, slim unit is ideal for maintaining constant temperatures, thanks to adjustable vanes that allow users to precisely direct air where it's needed.

Key Features & Benefits:

- **Dual Refrigerant Compatibility** - Compatible with both R32 & R410A refrigerants, making it suitable for a wide range of both retrofit and new build projects
- **Enhanced Safety for R32 Applications** - built to work with R32 safety measures ensuring compliance with regulation, providing peace of mind
- **Optional Low Level Leak Detector (PAC-SL72SA-E)** - Provides long service life, easy maintenance and supports compliance and safety regulations
- **High Sensible Cooling Capacity** - Combines enhanced airflow with improved off-coil temperatures to deliver superior cooling performance and optimal occupant comfort
- **Optional 3D i-see Sensor Grille (PLP-6EAE)** - Uses advanced sensors to detect room occupancy, position, and body temperature, automatically adjusting airflow and temperature for personalised comfort and energy efficiency
- **Optional Filter Lowering Mechanism (PLP-6EAJ)** - Allows filters to be lowered up to 4 metres for easy maintenance and cleaning, reducing service time and effort
- **Optional Black Matt Grille (PLP-6EAB)** - Ideal for applications with exposed ceiling designs or stylish aesthetics
- **Optional V Blocking Filter (PAC-SK53KF-E)** - Provides in-room air purification, neutralises viruses, bacteria, allergens, dust and mould for a healthier indoor environment
- **Compatible with Plasma Quad Connect (PAC-SK51FT-E)** - an innovative, bolt-on air purifying device which neutralises viruses, bacteria, allergens, PM2.5, mould and dust

R32 R410A



R32 R410A



PLP-6EA

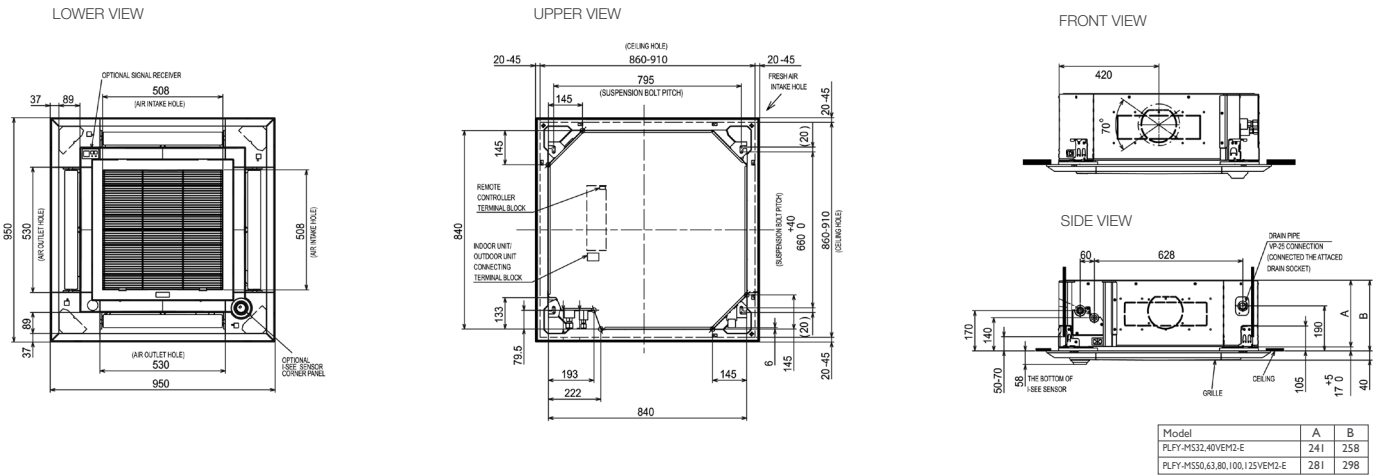


PLP-6EAB

PLFY-MS-VEM2-E INDOOR UNITS		PLFY-MS32VEM2-E	PLFY-MS40VEM2-E	PLFY-MS50VEM2-E	PLFY-MS63VEM2-E	PLFY-MS80VEM2-E	PLFY-MS100VEM2-E	PLFY-MS125VEM2-E
CAPACITY (kW)	Heating (nominal)	4.0	5.0	6.3	8.0	10.0	12.5	16.0
	Cooling (nominal)	3.6	4.5	5.6	7.1	9.0	11.2	14.0
	UK Heating	4.0	5.0	6.3	8.0	10.0	12.5	16.0
	UK Total Cooling - Hi (Sensible)	3.20 (3.00)	4.00 (3.50)	5.00 (4.10)	6.40 (4.90)	8.10 (6.20)	10.00 (7.60)	12.50 (9.50)
	UK Total Cooling - Mi1	3.16	3.88	4.86	6.22	7.82	9.74	12.01
POWER INPUT (kW)	Heating (nominal)	0.03	0.03	0.03	0.03	0.05	0.07	0.11
	Cooling (nominal)	0.03	0.03	0.03	0.03	0.05	0.07	0.11
	UK Total Cooling - Lo	3.02	3.69	4.50	5.93	6.72	8.81	10.54
AIRFLOW (l/s)	Lo-Mi2-Mi1-Hi	217-233-250-267	217-233-250-283	217-233-267-300	233-250-267-300	233-283-333-383	333-383-433-483	367-433-500-583
SOUND PRESSURE LEVEL (dBA)	Lo-Mi2-Mi1-Hi	26-27-29-31	26-27-29-31	26-27-29-31	28-29-30-32	28-31-34-37	34-37-39-41	35-39-42-45
WEIGHT (kg)	(Grille)	19 (5)	19 (5)	19 (5)	21 (5)	21 (5)	24 (5)	24 (5)
	Width (Grille)	840 (950)	840 (950)	840 (950)	840 (950)	840 (950)	840 (950)	840 (950)
DIMENSIONS (mm)	Depth (Grille)	840 (950)	840 (950)	840 (950)	840 (950)	840 (950)	840 (950)	840 (950)
	Height (Grille)	258 (40)	258 (40)	258 (40)	258 (40)	258 (40)	298 (40)	298 (40)
	ELECTRICAL SUPPLY	220-240v, 50Hz	220-240v, 50Hz	220-240v, 50Hz	220-240v, 50Hz	220-240v, 50Hz	220-240v, 50Hz	220-240v, 50Hz
PHASE		Single	Single	Single	Single	Single	Single	
RUNNING CURRENT (A)	Heating / Cooling	0.25 / 0.32	0.25 / 0.32	0.25 / 0.32	0.29 / 0.36	0.43 / 0.50	0.60 / 0.67	0.99 / 1.06
FUSE RATING (BS88) - HRC (A)		6	6	6	6	6	6	6
MAINS CABLE No. Cores		3	3	3	3	3	3	3
GRILLE MODEL REFERENCE	White	PLP-6EA	PLP-6EA	PLP-6EA	PLP-6EA	PLP-6EA	PLP-6EA	PLP-6EA
	Black Matt	PLP-6EAB	PLP-6EAB	PLP-6EAB	PLP-6EAB	PLP-6EAB	PLP-6EAB	PLP-6EAB
V BLOCKING FILTER		PAC-SK53KF-E	PAC-SK53KF-E	PAC-SK53KF-E	PAC-SK53KF-E	PAC-SK53KF-E	PAC-SK53KF-E	PAC-SK53KF-E
3D I-SEE SENSOR GRILLE		PLP-6EAE	PLP-6EAE	PLP-6EAE	PLP-6EAE	PLP-6EAE	PLP-6EAE	PLP-6EAE
SELF-ELEVATING GRILLE		PLP-6EAJ	PLP-6EAJ	PLP-6EAJ	PLP-6EAJ	PLP-6EAJ	PLP-6EAJ	PLP-6EAJ

Notes: PLY-MS-VEM2-E units are compatible for use with PURY-(E)M-YXM-A, PUHY-M-YXM-A, PURY-(E)P-YNW-A2, PUHY-P-YNW-A2, PUMY-(S)P-V/YKM/YBM, PUMY-(S)M-V/YKM, PQRY-P-Y(S)LM-A1 & PQHY-P-Y(S)LM-A1 outdoor units only.

PLFY-MS-VEM2-E DIMENSIONS



Telephone: 01707 282880
email: air.conditioning@meuk.mee.com
les.mitsubishielectric.co.uk

- @meuk_les @green_gateway
- Mitsubishi Electric Living Environmental Systems UK
- Mitsubishi Electric Cooling and Heating UK
- mitsubishielectricuk_les
- Mitsubishi Electric Living Environmental Systems UK
- thehub.mitsubishielectric.co.uk

UNITED KINGDOM Mitsubishi Electric Europe Living Environment Systems Division, Travellers Lane, Hatfield, Hertfordshire, AL10 8XB, England. Telephone: 01707 282880
IRELAND Mitsubishi Electric Europe, Plunkett House, Grange Castle Business Park, Nangor Road, Dublin 22, Ireland. Telephone: (00353) 1 4198800 Email: sales.info@meir.mee.com Web: les.mitsubishielectric.ie

Country of origin: United Kingdom - Italy - Turkey - Japan - Thailand - Malaysia. ©Mitsubishi Electric Europe 2026. Mitsubishi and Mitsubishi Electric are trademarks of Mitsubishi Electric Europe B.V. The company reserves the right to make any variation in technical specification to the equipment described, or to withdraw or replace products without prior notification or public announcement. Mitsubishi Electric is constantly developing and improving its products. All descriptions, illustrations, drawings and specifications in this publication present only general particulars and shall not form part of any contract. All goods are supplied subject to the Company's General Conditions of Sale, a copy of which is available on request. Third-party product and brand names may be trademarks or registered trademarks of their respective owners.

Note: The fuse rating is for guidance only and please refer to the relevant databook for detailed specification. It is the responsibility of a qualified electrician/electrical engineer to select the correct cable size and fuse rating based on current regulation and site specific conditions. Mitsubishi Electric's air conditioning equipment and heat pump systems contain a fluorinated greenhouse gas, R410A (GWP:2088), R32 (GWP:675), R407C (GWP:1774), R134a (GWP:1430), R513A (GWP:631), R454B (GWP:466), R515B (GWP:292), R454C (GWP:148), R1234ze (GWP:7) or R1234yf (GWP:4). *These GWP values are based on Regulation (EU) No 517/2014 from IPCC 4th edition. Mitsubishi Electric's air conditioning equipment and heat pump systems contain a hydrocarbon, R290 (GWP:0.02). *These GWP values are based on IPCC 6th edition.

Effective as of March 2026

