

GUX-MS-E

Lossnay Outdoor Air Processing Unit



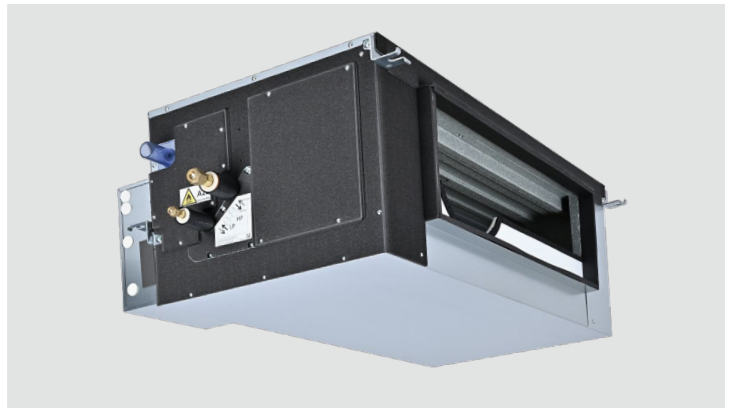
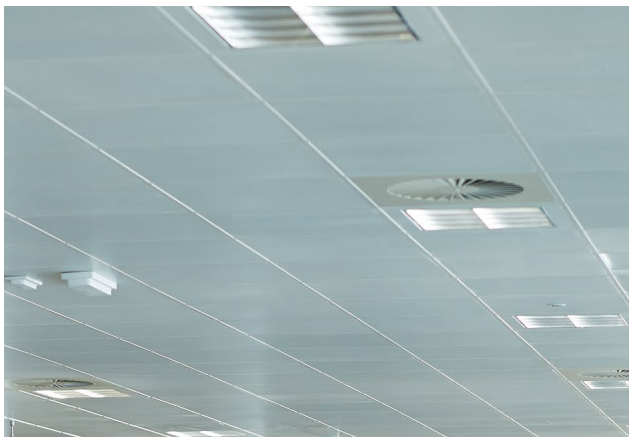
Designed to work seamlessly with City Multi YXM VRF and the Lossnay RVX(T)3 MVHR ranges, the **GUX-MS** delivers treated outdoor air with confidence.

The DX coil provides heated or cooled fresh air into commercial applications improving comfort, simplifying design and giving installers and specifiers the reassurance of one trusted Mitsubishi Electric system.

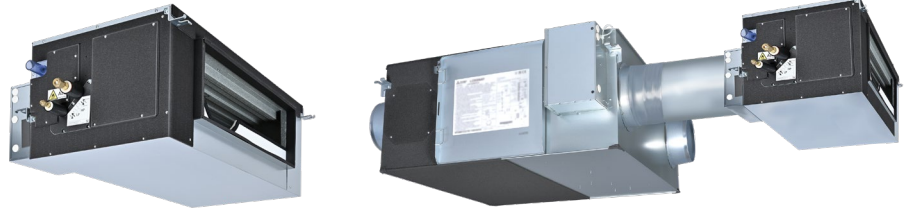
R32 **R410A**

Key Features & Benefits:

- **Seamless Air Treatment System** - GUX units connect with City Multi YXM and Lossnay RVX(T)3 ranges to deliver a simple, effective solution for heated or cooled fresh air supply
- **Lower GWP R32 Refrigerant** - for reduced carbon impact and future-ready legislation compliance
- **Optional Low Level Leak Detector (PAC-SL72SA-E)** - Provides long service life, easy maintenance and supports compliance and safety regulations
- **Wide Airflow Capability (500–2500 m³/h)** - Delivers high airflow without the size, weight, or installation demands of traditional AHUs, enabling solutions where space is limited
- **Flexible Air Control** - Supports return air temperature control with or without supply air temperature limit capabilities, enabling the right approach for each building while maintaining occupant comfort
- **Outdoor Air Temperature Conditioning** - Provides greater control of incoming fresh air temperature, improving comfort and supporting flexible system design



R410A R32



MODEL		GUX-MS32-E		GUX-MS50-E		GUX-MS80-E		GUX-MS100-E
COMPATIBLE LOSSNAY(S) MVHR		LGH-50RVX3-E	LGH-65RVX3-E	LGH-80RVX3-E	LGH-100RVX3-E	LGH-160RVX(T)3-E	LGH-200RVX(T)3-E	LGH-250RVXT3-E
COIL CAPACITY (kW)*1	Heating (Nominal)	3.2	4.0	5.0	6.3	8.0	10.0	12.5
	Cooling (Nominal)	2.8	3.6	4.5	5.6	7.1	9.0	11.2
	UK Heating	3.2	4.0	5.0	6.3	8.0	10.0	12.5
	UK Cooling	2.5	3.2	4.0	5.0	6.4	8.1	10.0
POWER INPUT (kW)	Heating (Nominal)	0.0025		0.0025		0.0025		0.0025
	Cooling (Nominal)	0.0124		0.0124		0.0124		0.0124
COIL OPERATIONAL AIRFLOW RANGE (l/s)		97 - 222		144 - 322		222 - 625		222 - 778
REQUIRED LOSSNAY FAN SETTING (%)		70 - 100		65 - 100		50 - 100		35 - 100
VENTILATION AIRFLOW RANGE (l/s)*2		67 - 222		67 - 322		67 - 625		67 - 778
DUCT SPIGOT SIZE (mm)	Inlet	200 Round		250 Round		650 x 250		650 x 250
	Outlet	520 x 200		750 x 250		750 x 250		750 x 250
WEIGHT (kg)		21		26		28		28
DIMENSIONS (mm)	Width	813		1035		1130		1130
	Depth	492		492		461		461
	Height	330		394		404		404
ELECTRICAL SUPPLY					220-240v, 50Hz			
PHASE					Single			
MAX RUNNING CURRENT (A)					<0.1			
FUSE RATING (BS88) - HRC (A)					6			
COMPATIBLE CONTROLLER(S)	Remote	PAR-42MAA(P)B-E						
	Centralised	AE-C400E						

Notes:

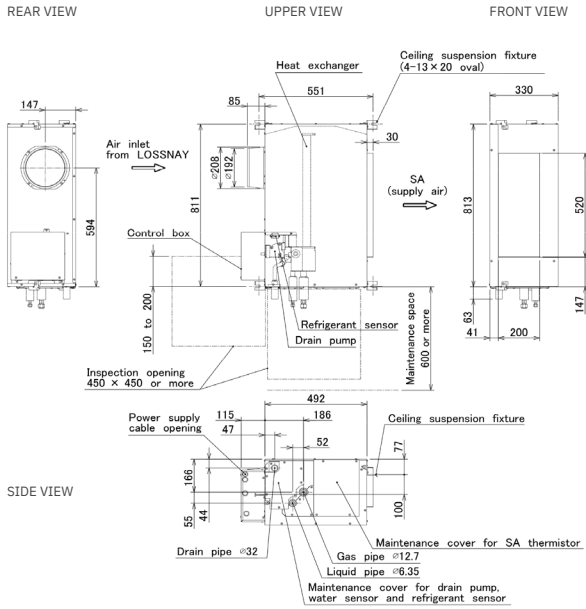
*1 The cooling / heating capacity does not take into account heat recovery of the Lossnay MVHR unit.

*2 Achievable airflow rate should be calculated using curves of Lossnay fan, GUX pressure drop, and ductwork system.

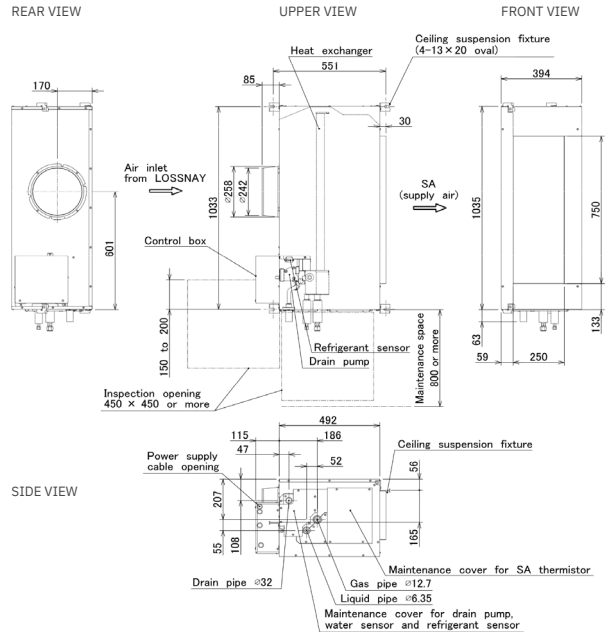
GUX-MS-E DIMENSIONS

All dimensions are in millimetres.

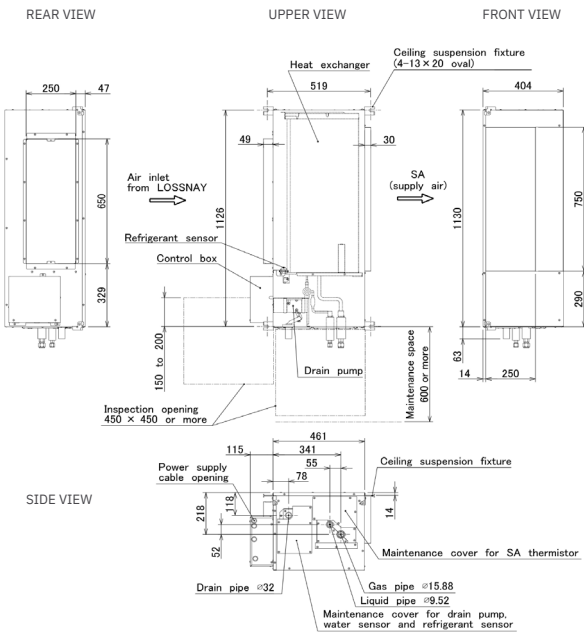
GUX-MS32-E



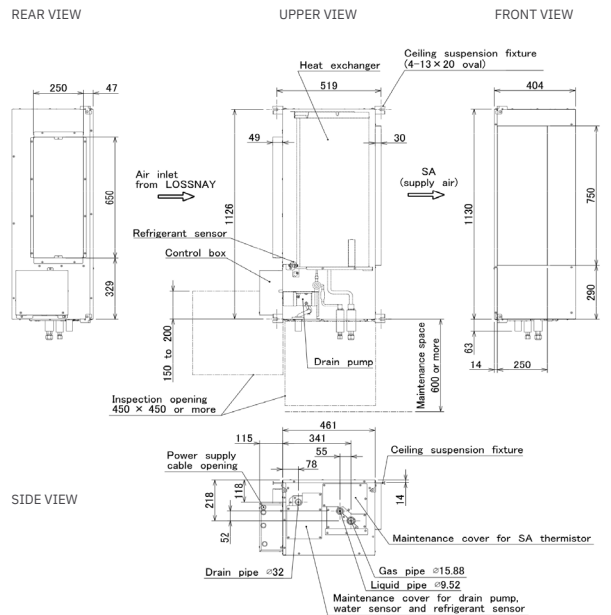
GUX-MS50-E



GUX-MS80-E

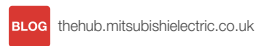
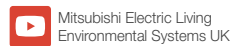
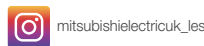
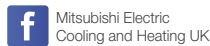


GUX-MS100-E





Telephone: 01707 282880
email: air.conditioning@meuk.mee.com
les.mitsubishielectric.co.uk



UNITED KINGDOM Mitsubishi Electric Europe Living Environment Systems Division, Travellers Lane, Hatfield, Hertfordshire, AL10 8XB, England. Telephone: 01707 282880
IRELAND Mitsubishi Electric Europe, Plunkett House, Grange Castle Business Park, Nangor Road, Dublin 22, Ireland. Telephone: (00353) 1 4198800 Email: sales.info@meir.mee.com Web: les.mitsubishielectric.ie

Country of origin: United Kingdom - Italy - Turkey - Japan - Thailand - Malaysia. ©Mitsubishi Electric Europe 2026. Mitsubishi and Mitsubishi Electric are trademarks of Mitsubishi Electric Europe B.V. The company reserves the right to make any variation in technical specification to the equipment described, or to withdraw or replace products without prior notification or public announcement. Mitsubishi Electric is constantly developing and improving its products. All descriptions, illustrations, drawings and specifications in this publication present only general particulars and shall not form part of any contract. All goods are supplied subject to the Company's General Conditions of Sale, a copy of which is available on request. Third-party product and brand names may be trademarks or registered trademarks of their respective owners.

Note: The fuse rating is for guidance only and please refer to the relevant databook for detailed specification. It is the responsibility of a qualified electrician/electrical engineer to select the correct cable size and fuse rating based on current regulation and site specific conditions. Mitsubishi Electric's air conditioning equipment and heat pump systems contain a fluorinated greenhouse gas, R410A (GWP:2088), R32 (GWP:675), R407C (GWP:1774), R134a (GWP:1430), R513A (GWP:631), R454B (GWP:466), R515B (GWP:292), R454C (GWP:148), R1234ze (GWP:7) or R1234yf (GWP:4). *These GWP values are based on Regulation (EU) No 517/2014 from IPCC 4th edition. Mitsubishi Electric's air conditioning equipment and heat pump systems contain a hydrocarbon, R290 (GWP:0.02). †These GWP values are based on IPCC 6th edition.

Effective as of February 2026

