

M2M - Mitsubishi Electric's GPRS Controller



With the rising cost of utility bills including electricity, gas and water more and more companies have to become energy conscious and are making a commitment to actively reduce their energy consumption and ease of maintenance. This is achievable by monitoring and controlling remote sites more effectively.



Controlling utility consumption is becoming a major issue and the introduction of the new Mitsubishi Electric M2M controller could be the answer you are looking for.

Using GPRS technology the M2M is controlled via the mobile phone network and customers can interact and control their air conditioning by use of a internet enabled PC or device.

Users can view information from all M2M devices located worldwide on a single portal via the internet. This wireless technology enables customers to not only monitor but control multiple sites located throughout the UK from a single PC.

In addition should a fault occur on a system they can access full details of the fault and ensure that the correct spare part is taken to site first time, saving time and money.

M2M also allows you to control third party equipment. Where possible you can switch on and off additional equipment such as boilers, lights, air handling units and ventilation fans using them only when needed.

M2M can provide 'a mini BMS' function at a fraction of the cost, especially with sites in remote locations, sites with no Local Area Network (LAN) connections or sites which currently have no existing BMS installed in them.

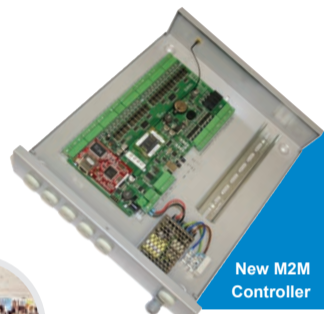
M2M uses GPRS rather than a LAN connection. There is no issue with IT departments allowing external access to third party equipment and it is therefore more secure.

Mitsubishi Electric has two versions available; the mini for split systems, capable of handling up to 16 indoor units together with four inputs /outputs for connection to other devices. The maxi M2M which is for City Multi and works in conjunction with our G-50A/GB-50 centralised controller, can handle up to 50 indoor units plus an additional 16 inputs/outputs.

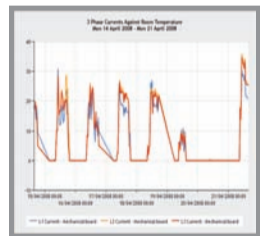
Because it is a SIM card based system, you pay once for the system and then an annual subscription (of around £200 per annum) for the network coverage. This charge is waived for the first year.

There is no limitation to the number of sites that can be controlled via the single web interface which is secure with clients specific login, and doesn't require any additional software to be installed to access the system.

For further details on M2M please ring the Corporate Sales department on **0870 3000 070**



New M2M Controller



MITSUBISHI ELECTRIC EUROPE
 Air Conditioning Systems, Corporate Sales, Mylen House, 11 Wagon Lane, Sheldon, Birmingham B26 3DU
 Telephone: **0870 3000 070** Fax: **0870 3000 080** Email: airconcorporate@meuk.mee.com
 Web: www.mitsubishielectric.co.uk/aircon

