

January 2013

No. OCB531

REVISED EDITION-A

PARTS CATALOG

R410A

[Model name]

EHST20C-VM6HB

EHST20C-YM9HB

EHST20C-TM9HB

EHST20C-VM2B

EHST20C-VM6B

EHST20C-YM9B

EHST20C-VM6EB

EHST20C-YM9EB

EHST20C-VM6SB

EHPT20X-VM2HB

EHPT20X-VM6HB

EHPT20X-YM9HB

EHPT20X-TM9HB

EHPT20X-VM6B

EHPT20X-YM9B

[Service Ref.]

EHST20C-VM6HB.UK

EHST20C-YM9HB.UK

EHST20C-TM9HB.UK

EHST20C-VM2B.UK

EHST20C-VM6B.UK

EHST20C-YM9B.UK

EHST20C-VM6EB.UK

EHST20C-YM9EB.UK

EHST20C-VM6SB.UK

EHPT20X-VM2HB.UK

EHPT20X-VM6HB.UK

EHPT20X-YM9HB.UK

EHPT20X-TM9HB.UK

EHPT20X-VM6B.UK

EHPT20X-YM9B.UK

Revision:

- EHST20C-TM9HB.UK, EHST20C-VM2B.UK and EHPT20X-TM9HB.UK have been added in REVISED EDITION-A.
- Some descriptions have been modified.

- Please void OCB531.

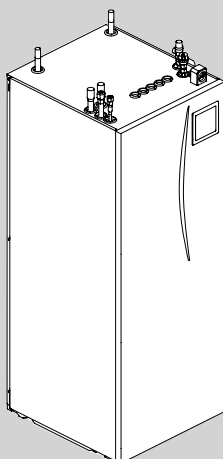
Note:

- RoHS compliant products have <G> mark on the spec name plate.

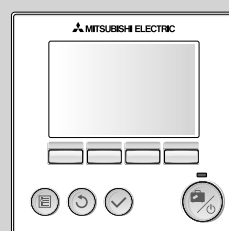
CONTENTS

1. RoHS PARTS LIST..... 2
2. OPTIONAL PARTS..... Back cover

SERVICE MANUAL (OCH531)

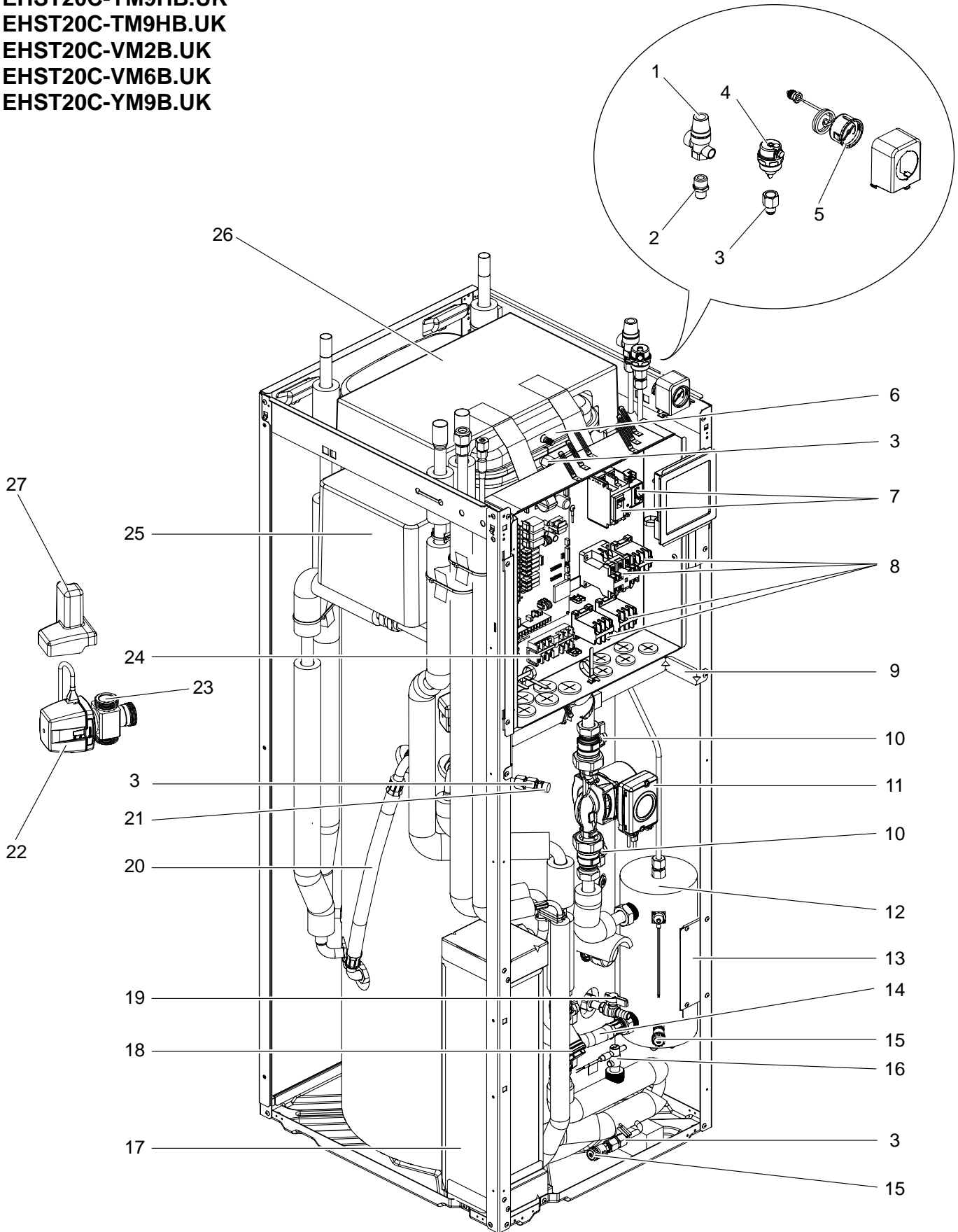


CYLINDER UNIT



MAIN CONTROLLER

EHST20C-VM6HB.UK
 EHST20C-YM9HB.UK
 EHST20C-TM9HB.UK
 EHST20C-VM2B.UK
 EHST20C-VM6B.UK
 EHST20C-YM9B.UK



RoHS PARTS LIST

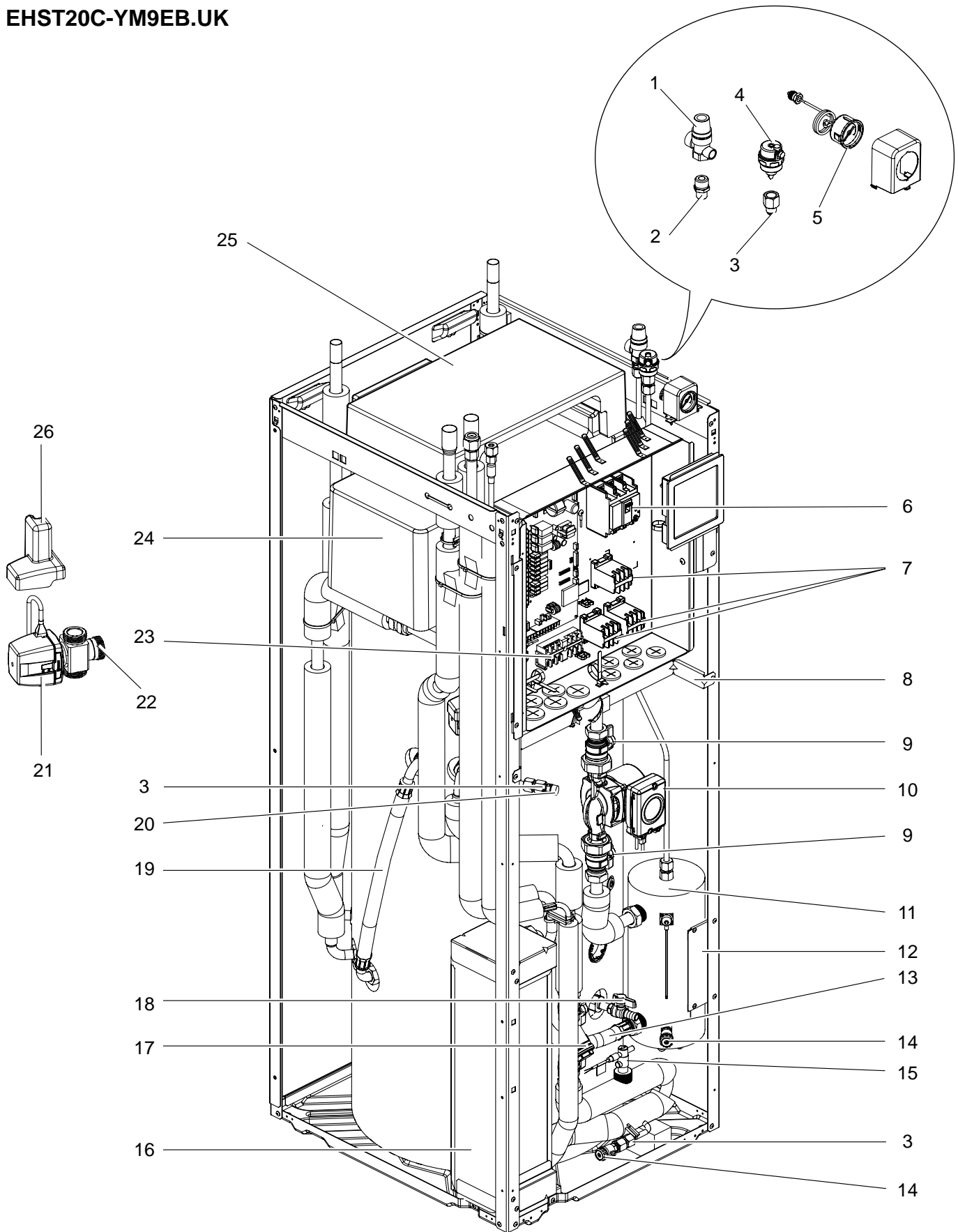
No.	RoHS	Part No.	Parts name	Specification	Q'ty/unit						Remarks	Wiring diagram symbol	Required regular replacement (*: Required regular inspection)
					EHST20C-VM6HB.UK	EHST20C-VM9HB.UK	EHST20C-TM9HB.UK	EHST20C-VM2B.UK	EHST20C-VM6B.UK	EHST20C-VM9B.UK			
1	G	S70 C18 404	PRESSURE RELIEF VALVE 3bar		1	1	1	1	1	1			6 years
2	G	S70 C60 096	FLARE JOINT	3/8F-R1/2	1	1	1	1	1	1			
3	G	S70 C50 096	FLARE JOINT	3/8F-G3/8	4	4	4	4	4	4			
4	G	S70 C17 150	AIR VENT (AUTOMATIC)		1	1	1	1	1	1			6 years
5	G	S70 C20 205	MANOMETER		1	1	1	1	1	1			6 years
6	G	S70 C15 402	EXPANSION VESSEL	12L	1	1	1	1	1	1			
7	G	S70 C30 239	EARTH LEAKAGE CIRCUIT BREAKER	1 ϕ 40A	1				1			ECB1	
	G	S70 C40 239	EARTH LEAKAGE CIRCUIT BREAKER	3 ϕ 20A		1				1		ECB1	
	G	S70 C50 239	EARTH LEAKAGE CIRCUIT BREAKER	3 ϕ 30A			1					ECB1	
	G	S70 C20 239	EARTH LEAKAGE CIRCUIT BREAKER	1 ϕ 20A	1	1	1	1				ECB1, ECB2	
8	G	S70 C29 708	CONTACTOR	45A	1		1	1	1			BHCP	
	G	S70 C39 708	CONTACTOR	30A	3	4	3	2	2	3		BHCP, BHC1, BHC2, IHC	
9	G	—	PUMP FRAME ASSY		1	1	1	1	1	1	BK00L813GA0		
10	G	S70 C10 356	PUMP VALVE		2	2	2	2	2	2			
11	G	S70 C03 355	WATER PUMP		1	1	1	1	1	1		MP1	20,000 hrs (3 years)(*)
12	G	S70 C80 441	BOOSTER HEATER	1 ϕ 230V 6 kW	1				1			BH1, BH2	
	G	S70 C90 441	BOOSTER HEATER	3 ϕ 400V 9 kW		1				1		BH1, BH2	
	G	S70 C71 441	BOOSTER HEATER	3 ϕ 230V 9 kW			1					BH1, BH2	
	G	S70 C70 441	BOOSTER HEATER	1 ϕ 230V 2 kW				1				BH1	
13	G	—	HEATER STAY		1	1	1	1	1	1	BK00L667G03		
14	G	S70 C20 601	FLEXIBLE HOSE		1	1	1	1	1	1			6 years
15	G	S70 C30 357	DRAIN COCK		2	2	2	2	2	2	FOR PRIMARY CIRCUIT		6 years
16	G	S70 C22 266	FLOW SWITCH		1	1	1	1	1	1			
17	G	S70 C30 408	WATER COIL ASSY (PLATE HEAT EXCHANGER)		1	1	1	1	1	1	WITH PIPE & FLEXIBLE HOSE		
18	G	S70 C10 450	STRAINER		1	1	1	1	1	1	MESH: 24 WIRE DIAMETER: 0.29mm		
19	G	S70 C10 357	DRAIN COCK		1	1	1	1	1	1	FOR TANK		
20	G	S70 C40 601	FLEXIBLE HOSE		1	1	1	1	1	1			6 years
21	G	S70 C25 150	AIR VENT (MANUAL)		1	1	1	1	1	1			6 years
22	G	S70 C23 762	3WAY VALVE (DIVERTING MOTOR)		1	1	1	1	1	1		3WV	
23	G	S70 C24 406	3WAY VALVE (DIVERTING VALVE)		1	1	1	1	1	1			
24	G	S70 C20 515	TERMINAL BED	6P	1	1	1	1	1	1	(#250LNE+S123)		
25	G	—	TANK CUSHION TOP		1	1	1	1	1	1	BX25A154G04		
26	G	—	EXPANSION VESSEL CUSHION		1	1	1	1	1	1	BX25A155G03		
27	G	—	MOTOR CAP		1	1	1	1	1	1	BK25J773G01-JP		
(28)	G	S70 C11 460	O-RING		1	1	1	1	1	1	FOR STRAINER		
(29)	G	S70 C22 460	O-RING		1	1	1	1	1	1	FOR FLOW SWITCH		

Parts number that is circled is not shown in the figure.

Do not reuse the O-ring for flow switch and strainer that was once removed, but be sure to replace with a new one.

RoHS PARTS LIST

EHST20C-VM6EB.UK
EHST20C-YM9EB.UK



RoHS PARTS LIST

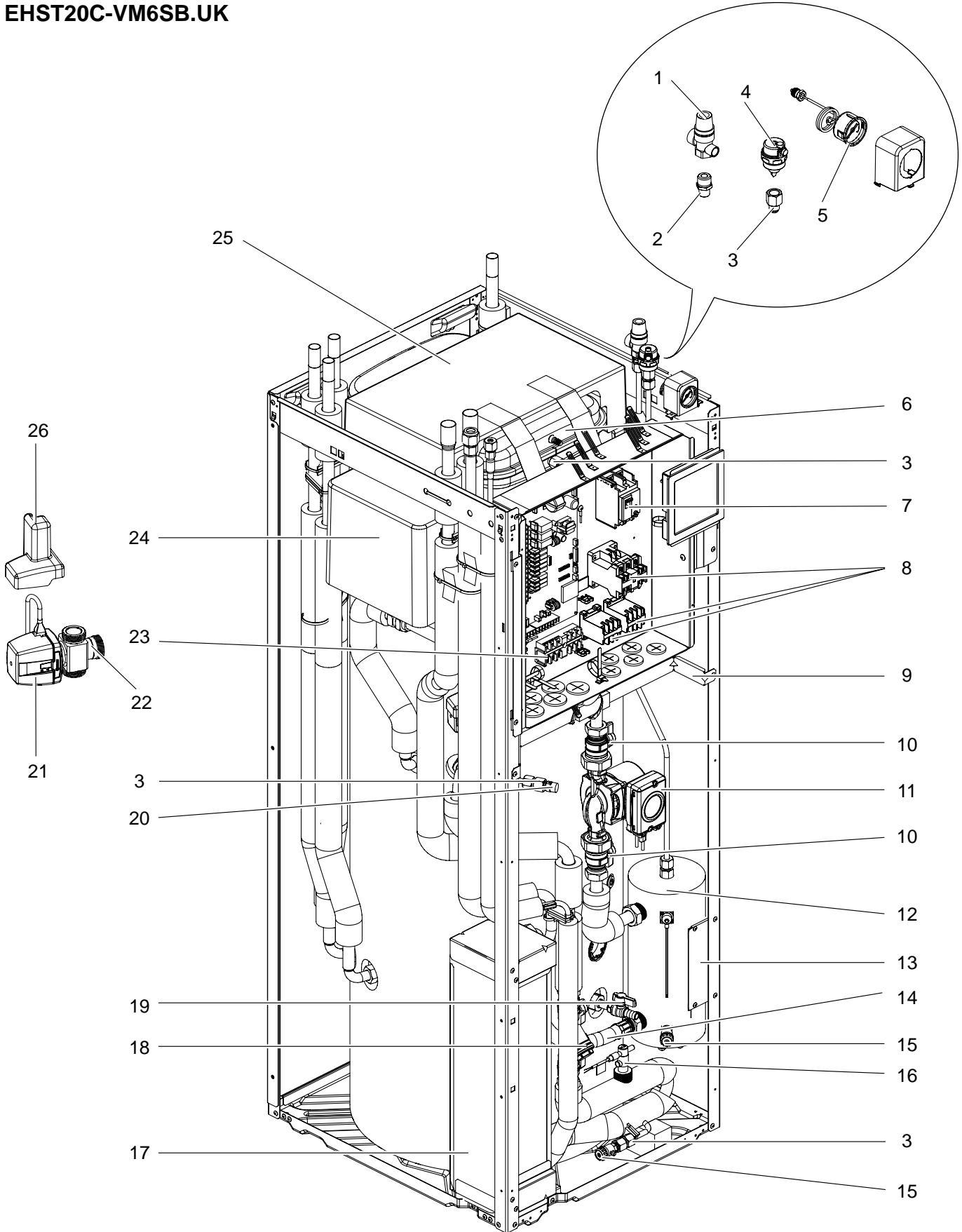
No.	RoHS	Part No.	Parts name	Specification	Q'ty/unit		Remarks	Wiring diagram symbol	Required regular replacement (*: Required regular inspection)
					EHST20C-VM6EB.UK	EHST20C-YM9EB.UK			
1	G	S70 C18 404	PRESSURE RELIEF VALVE 3bar		1	1			6 years
2	G	S70 C60 096	FLARE JOINT	3/8F-R1/2	1	1			
3	G	S70 C50 096	FLARE JOINT	3/8F-G3/8	3	3			
4	G	S70 C17 150	AIR VENT (AUTOMATIC)		1	1			6 years
5	G	S70 C20 205	MANOMETER		1	1			6 years
6	G	S70 C30 239	EARTH LEAKAGE CIRCUIT BREAKER	1 ϕ 40A	1			ECB1	
	G	S70 C40 239	EARTH LEAKAGE CIRCUIT BREAKER	3 ϕ 20A		1		ECB1	
7	G	S70 C29 708	CONTACTOR	45A	1			BHCP	
	G	S70 C39 708	CONTACTOR	30A	2	3		BHCP, BHC1, BHC2	
8	G	—	PUMP FRAME ASSY		1	1	BK00L813GA0		
9	G	S70 C10 356	PUMP VALVE		2	2			
10	G	S70 C03 355	WATER PUMP		1	1		MP1	20,000 hrs (3 years)(*)
11	G	S70 C80 441	BOOSTER HEATER	1 ϕ 230V 6 kW	1			BH1, BH2	
	G	S70 C90 441	BOOSTER HEATER	3 ϕ 400V 9 kW		1		BH1, BH2	
12	G	—	HEATER STAY		1	1	BK00L667G03		
13	G	S70 C20 601	FLEXIBLE HOSE		1	1			6 years
14	G	S70 C30 357	DRAIN COCK		2	2	FOR PRIMARY CIRCUIT		6 years
15	G	S70 C22 266	FLOW SWITCH		1	1			
16	G	S70 C30 408	WATER COIL ASSY (PLATE HEAT EXCHANGER)		1	1	WITH PIPE & FLEXIBLE HOSE		
17	G	S70 C10 450	STRAINER		1	1	MESH: 24 WIRE DIAMETER: 0.29mm		
18	G	S70 C10 357	DRAIN COCK		1	1	FOR TANK		
19	G	S70 C40 601	FLEXIBLE HOSE		1	1			6 years
20	G	S70 C25 150	AIR VENT (MANUAL)		1	1			6 years
21	G	S70 C23 762	3WAY VALVE (DIVERTING MOTOR)		1	1		3WV	
22	G	S70 C24 406	3WAY VALVE (DIVERTING VALVE)		1	1			
23	G	S70 C20 515	TERMINAL BED	6P	1	1	(#250LNE+S123)		
24	G	—	TANK CUSHION TOP		1	1	BX25A154G04		
25	G	—	EXPANSION VESSEL CUSHION		1	1	BX25A155G03		
26	G	—	MOTOR CAP		1	1	BK25J773G01-JP		
(27)	G	S70 C11 460	O-RING		1	1	FOR STRAINER		
(28)	G	S70 C22 460	O-RING		1	1	FOR FLOW SWITCH		

Parts number that is circled is not shown in the figure.

Do not reuse the O-ring for flow switch and strainer that was once removed, but be sure to replace with a new one.

RoHS PARTS LIST

EHST20C-VM6SB.UK



RoHS PARTS LIST

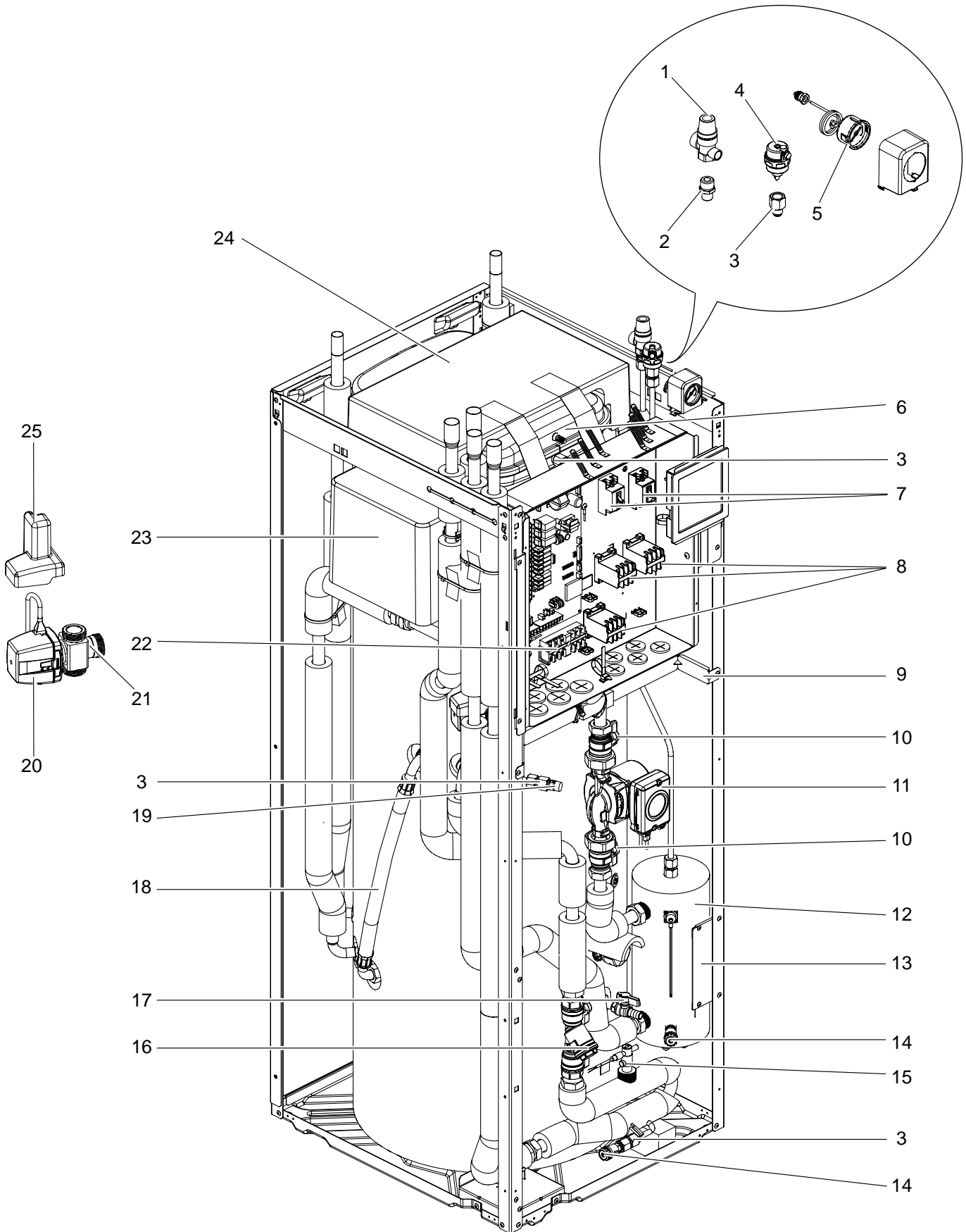
No.	RoHS	Part No.	Parts name	Specification	Q'ty/unit	Remarks	Wiring diagram symbol	Required regular replacement (*: Required regular inspection)
					EHST20C-VM6SB.UK			
1	G	S70 C18 404	PRESSURE RELIEF VALVE 3bar		1			6 years
2	G	S70 C60 096	FLARE JOINT	3/8F-R1/2	1			
3	G	S70 C50 096	FLARE JOINT	3/8F-G3/8	4			
4	G	S70 C17 150	AIR VENT (AUTOMATIC)		1			6 years
5	G	S70 C20 205	MANOMETER		1			6 years
6	G	S70 C15 402	EXPANSION VESSEL	12L	1			
7	G	S70 C30 239	EARTH LEAKAGE CIRCUIT BREAKER	1 ϕ 40A	1		ECB1	
8	G	S70 C29 708	CONTACTOR	45A	1		BHCP	
	G	S70 C39 708	CONTACTOR	30A	2		BHC1, BHC2	
9	G	—	PUMP FRAME ASSY		1	BK00L813GA0		
10	G	S70 C10 356	PUMP VALVE		2			
11	G	S70 C03 355	WATER PUMP		1		MP1	20,000 hrs (3 years)(*)
12	G	S70 C80 441	BOOSTER HEATER	1 ϕ 230V 6 kW	1		BH1, BH2	
13	G	—	HEATER STAY		1	BK00L667G03		
14	G	S70 C20 601	FLEXIBLE HOSE		1			6 years
15	G	S70 C30 357	DRAIN COCK		2	FOR PRIMARY CIRCUIT		6 years
16	G	S70 C22 266	FLOW SWITCH		1			
17	G	S70 C30 408	WATER COIL ASSY (PLATE HEAT EXCHANGER)		1	WITH PIPE & FLEXIBLE HOSE		
18	G	S70 C10 450	STRAINER		1	MESH: 24 WIRE DIAMETER: 0.29mm		
19	G	S70 C10 357	DRAIN COCK		1	FOR TANK		
20	G	S70 C25 150	AIR VENT (MANUAL)		1			6 years
21	G	S70 C23 762	3WAY VALVE (DIVERTING MOTOR)		1		3WV	
22	G	S70 C24 406	3WAY VALVE (DIVERTING VALVE)		1			
23	G	S70 C20 515	TERMINAL BED	6P	1	(#250LNE+S123)		
24	G	—	TANK CUSHION TOP		1	BX25A154G04		
25	G	—	EXPANSION VESSEL CUSHION		1	BX25A155G03		
26	G	—	MOTOR CAP		1	BK25J773G01-JP		
(27)	G	S70 C11 460	O-RING		1	FOR STRAINER		
(28)	G	S70 C22 460	O-RING		1	FOR FLOW SWITCH		

Parts number that is circled is not shown in the figure.

Do not reuse the O-ring for flow switch and strainer that was once removed, but be sure to replace with a new one.

RoHS PARTS LIST

EHPT20X-VM2HB.UK



RoHS PARTS LIST

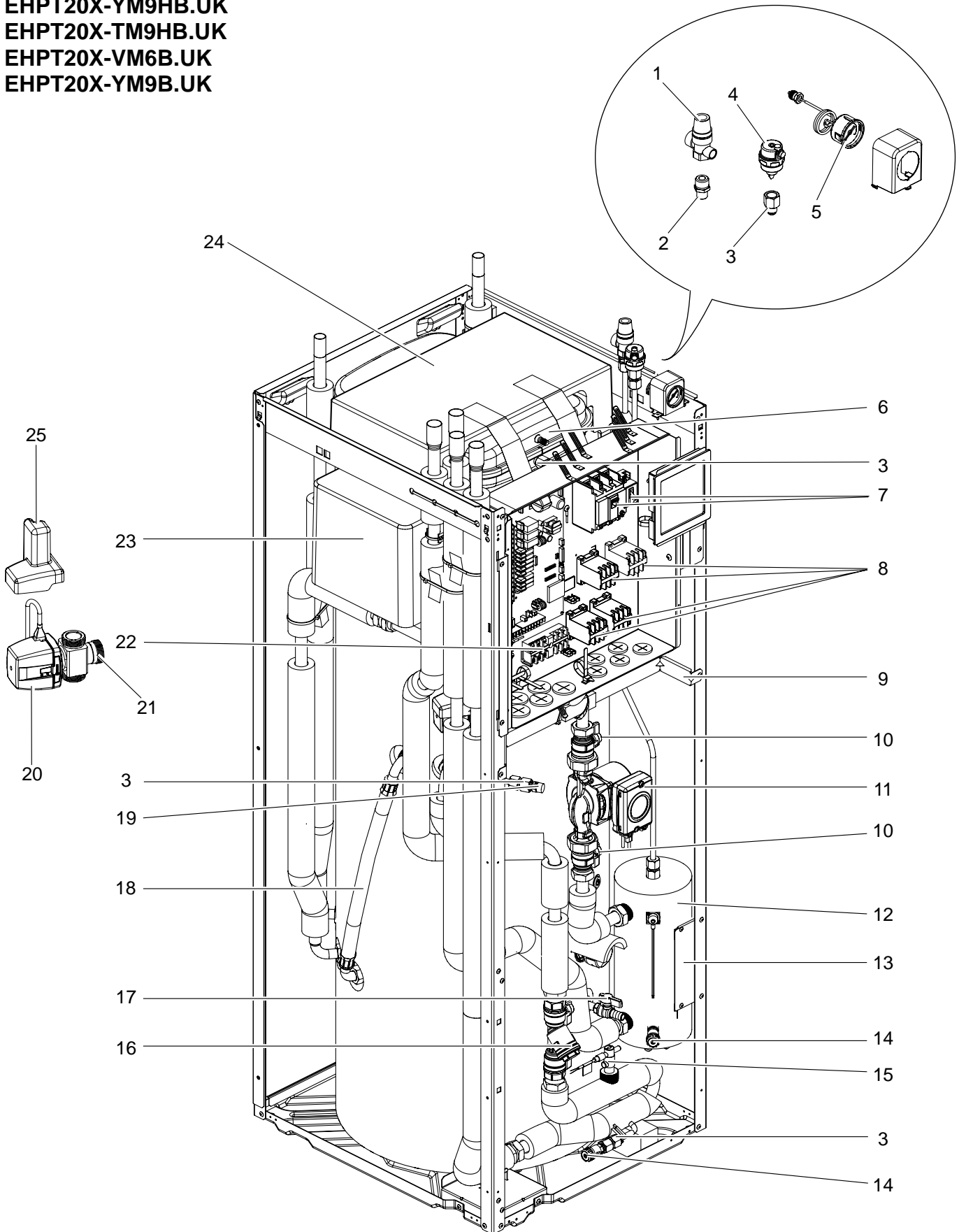
No.	RoHS	Part No.	Parts name	Specification	Q'ty/unit	Remarks	Wiring diagram symbol	Required regular replacement (*: Required regular inspection)
					EHPT20X-VM2HB.UK			
1	G	S70 C18 404	PRESSURE RELIEF VALVE 3bar		1			6 years
2	G	S70 C60 096	FLARE JOINT	3/8F-R1/2	1			
3	G	S70 C50 096	FLARE JOINT	3/8F-G3/8	4			
4	G	S70 C17 150	AIR VENT (AUTOMATIC)		1			6 years
5	G	S70 C20 205	MANOMETER		1			6 years
6	G	S70 C15 402	EXPANSION VESSEL	12L	1			
7	G	S70 C20 239	EARTH LEAKAGE CIRCUIT BREAKER	1 ϕ 20A	2		ECB1, ECB2	
8	G	S70 C39 708	CONTACTOR	30A	3		BHCP, BHC1, IHC	
9	G	—	PUMP FRAME ASSY		1	BK00L813GA0		
10	G	S70 C10 356	PUMP VALVE		2			
11	G	S70 C03 355	WATER PUMP		1		MP1	20,000 hrs (3 years)(*)
12	G	S70 C70 441	BOOSTER HEATER	1 ϕ 230V 2 kW	1		BH1	
13	G	—	HEATER STAY		1	BK00L667G03		
14	G	S70 C30 357	DRAIN COCK		2	FOR PRIMARY CIRCUIT		6 years
15	G	S70 C22 266	FLOW SWITCH		1			
16	G	S70 C10 450	STRAINER		1	MESH: 24 WIRE DIAMETER: 0.29mm		
17	G	S70 C10 357	DRAIN COCK		1	FOR TANK		
18	G	S70 C40 601	FLEXIBLE HOSE		1			6 years
19	G	S70 C25 150	AIR VENT (MANUAL)		1			6 years
20	G	S70 C23 762	3WAY VALVE (DIVERTING MOTOR)		1		3WV	
21	G	S70 C24 406	3WAY VALVE (DIVERTING VALVE)		1			
22	G	S70 C20 515	TERMINAL BED	6P	1	(#250LNE+S123)		
23	G	—	TANK CUSHION TOP		1	BX25A154G04		
24	G	—	EXPANSION VESSEL CUSHION		1	BX25A155G03		
25	G	—	MOTOR CAP		1	BK25J773G01-JP		
(26)	G	S70 C11 460	O-RING		1	FOR STRAINER		
(27)	G	S70 C22 460	O-RING		1	FOR FLOW SWITCH		

Parts number that is circled is not shown in the figure.

Do not reuse the O-ring for flow switch and strainer that was once removed, but be sure to replace with a new one.

RoHS PARTS LIST

EHPT20X-VM6HB.UK
 EHPT20X-YM9HB.UK
 EHPT20X-TM9HB.UK
 EHPT20X-VM6B.UK
 EHPT20X-YM9B.UK



RoHS PARTS LIST

No.	RoHS	Part No.	Parts name	Specification	Q'ty /unit					Remarks	Wiring diagram symbol	Required regular replacement (*: Required regular inspection)
					EHPT20X-VM6HB.UK	EHPT20X-YM9HB.UK	EHPT20X-TM9HB.UK	EHPT20X-VM6B.UK	EHPT20X-YM9B.UK			
1	G	S70 C18 404	PRESSURE RELIEF VALVE 3bar		1	1	1	1	1			6 years
2	G	S70 C60 096	FLARE JOINT	3/8F-R1/2	1	1	1	1	1	BK42L672H01		
3	G	S70 C50 096	FLARE JOINT	3/8F-G3/8	4	4	4	4	4			
4	G	S70 C17 150	AIR VENT (AUTOMATIC)		1	1	1	1	1			6 years
5	G	S70 C20 205	MANOMETER		1	1	1	1	1			6 years
6	G	S70 C15 402	EXPANSION VESSEL	12L	1	1	1	1	1			
7	G	S70 C30 239	EARTH LEAKAGE CIRCUIT BREAKER	1 ϕ 40A	1			1			ECB1	
	G	S70 C40 239	EARTH LEAKAGE CIRCUIT BREAKER	3 ϕ 20A		1			1		ECB1	
	G	S70 C20 239	EARTH LEAKAGE CIRCUIT BREAKER	1 ϕ 20A	1	1	1				ECB1, ECB2	
	G	S70 C50 239	EARTH LEAKAGE CIRCUIT BREAKER	3 ϕ 30A			1				ECB1	
8	G	S70 C29 708	CONTACTOR	45A	1		1	1			BHCP	
	G	S70 C39 708	CONTACTOR	30A	3	4	3	2	3		BHCP, BHC1, BHC2, IHC	
9	G	—	PUMP FRAME ASSY		1	1	1	1	1	BK00L813GA0		
10	G	S70 C10 356	PUMP VALVE		2	2	2	2	2			
11	G	S70 C03 355	WATER PUMP		1	1	1	1	1		MP1	20,000 hrs (3 years)(*)
12	G	S70 C80 441	BOOSTER HEATER	1 ϕ 230V 6 kW	1			1			BH1, BH2	
	G	S70 C90 441	BOOSTER HEATER	3 ϕ 400V 9 kW		1			1		BH1, BH2	
	G	S70 C71 441	BOOSTER HEATER	3 ϕ 230V 9 kW			1				BH1, BH2	
13	G	—	HEATER STAY		1	1	1	1	1	BK00L667G03		
14	G	S70 C30 357	DRAIN COCK		2	2	2	2	2	FOR PRIMARY CIRCUIT		6 years
15	G	S70 C22 266	FLOW SWITCH		1	1	1	1	1			
16	G	S70 C10 450	STRAINER		1	1	1	1	1	MESH: 24 WIRE DIAMETER: 0.29mm		
17	G	S70 C10 357	DRAIN COCK		1	1	1	1	1	FOR TANK		
18	G	S70 C40 601	FLEXIBLE HOSE		1	1	1	1	1			6 years
19	G	S70 C25 150	AIR VENT (MANUAL)		1	1	1	1	1			6 years
20	G	S70 C23 762	3WAY VALVE (DIVERTING MOTOR)		1	1	1	1	1		3WV	
21	G	S70 C24 406	3WAY VALVE (DIVERTING VALVE)		1	1	1	1	1			
22	G	S70 C20 515	TERMINAL BED	6P	1	1	1	1	1	(#250LNE+S123)		
23	G	—	TANK CUSHION TOP		1	1	1	1	1	BX25A154G04		
24	G	—	EXPANSION VESSEL CUSHION		1	1	1	1	1	BX25A155G03		
25	G	—	MOTOR CAP		1	1	1	1	1	BK25J773G01-JP		
(26)	G	S70 C11 460	O-RING		1	1	1	1	1	FOR STRAINER		
(27)	G	S70 C22 460	O-RING		1	1	1	1	1	FOR FLOW SWITCH		

Parts number that is circled is not shown in the figure.

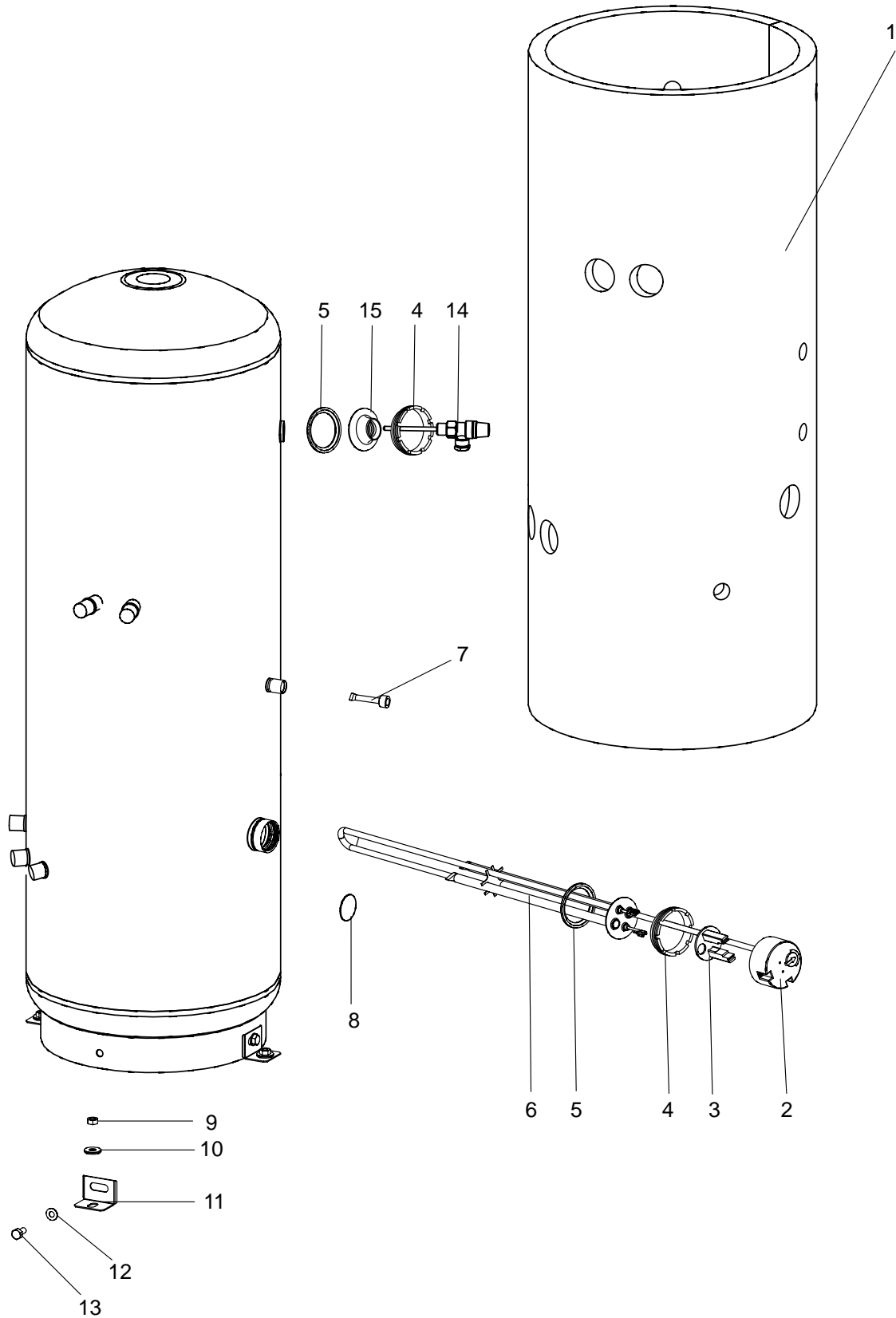
Do not reuse the O-ring for flow switch and strainer that was once removed, but be sure to replace with a new one.

RoHS PARTS LIST

EHST20C-VM6HB.UK
 EHST20C-VM2B.UK
 EHST20C-VM6EB.UK
 EHPT20X-VM2HB.UK
 EHPT20X-TM9HB.UK

EHST20C-YM9HB.UK
 EHST20C-VM6B.UK
 EHST20C-YM9EB.UK
 EHPT20X-VM6HB.UK
 EHPT20X-VM6B.UK

EHST20C-TM9HB.UK
 EHST20C-YM9B.UK
 EHST20C-VM6SB.UK
 EHPT20X-YM9HB.UK
 EHPT20X-YM9B.UK



RoHS PARTS LIST

No.	RoHS	Part No.	Parts name	Specification	Q'ty /unit														Remarks	Wiring diagram symbol	Required regular replacement (=: Required regular inspection)
					EHST20C-VM6HB.UK	EHST20C-YM9HB.UK	EHST20C-TM9HB.UK	EHST20C-VM2B.UK	EHST20C-VM6B.UK	EHST20C-YM9B.UK	EHST20C-VM6EB.UK	EHST20C-YM9EB.UK	EHST20C-VM6SB.UK	EHPT20X-VM2HB.UK	EHPT20X-VM6HB.UK	EHPT20X-YM9HB.UK	EHPT20X-TM9HB.UK	EHPT20X-VM6B.UK			
1	G	S70 C40 042	TANK INSLATOR		1	1	1	1	1	1	1	1	1	1	1	1	1	1			
2	G	S70 C08 201	THERMOSTAT		1	1	1								1	1	1	1		IHT	
3	G	S70 C33 461	ELEMENT PLATE TERMINAL COVER		1	1	1								1	1	1	1			
4	G	S70 C60 097	BACKNUT		1	1	1	1	1	1	1	1	1	1	1	1	1	1	1		
5	G	S70 C33 460	ELEMENT PLATE GASKET		1	1	1	1	1	1	1	1	1	1	1	1	1	1	1		
6	G	S70 C50 445	IMMERSION HEATER	1 ϕ 3kW	1	1	1								1	1	1	1		IH	2 years(*)
7	G	S70 C11 525	STAT POCKET ASSEMBLY	R1/2	1	1	1	1	1	1	1	1	1	1	1	1	1	1	1		
8	G	S70 C40 446	BLANKING PLATE					1	1	1	1	1	1					1	1	FOR TANK/ FOR T&P	
9	G	S70 C10 097	NUT	M10	3	3	3	3	3	3	3	3	3	3	3	3	3	3	3		
10	G	S70 C61 097	WASHER		3	3	3	3	3	3	3	3	3	3	3	3	3	3	3		
11	G	S70 C30 042	TANK FEET		3	3	3	3	3	3	3	3	3	3	3	3	3	3	3		
12	G	S70 C20 097	WASHER		3	3	3	3	3	3	3	3	3	3	3	3	3	3	3		
13	G	S70 C30 097	BOLT	M10x20	3	3	3	3	3	3	3	3	3	3	3	3	3	3	3		
14	G	S70 C19 404	TEMPERATURE AND PRESSURE RELIEF VALVE												1						
15	G	S70 C10 405	JOINT (TEMPERATURE AND PRESSURE RELIEF VALVE)												1						

Do not reuse the ELEMENT PLATE GASKET (No.5) that was once removed, but be sure to replace with a new one.

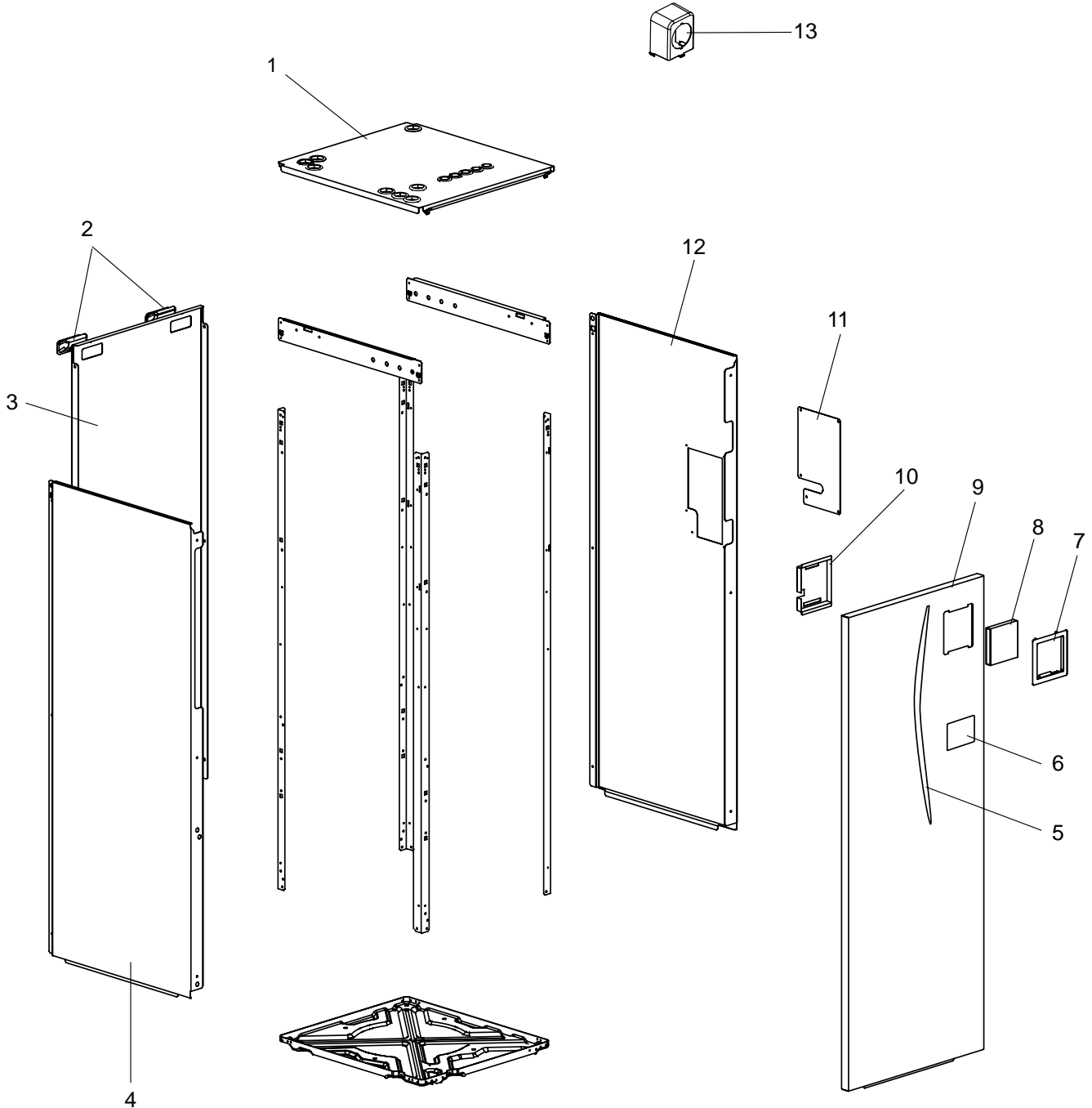
When removing and reinstalling the TEMPERATURE AND PRESSURE RELIEF VALVE (No.14), JIG (for BACK NUT) (Page 17 No. 3) is required.

RoHS PARTS LIST

EHST20C-VM6HB.UK
 EHST20C-VM2B.UK
 EHST20C-VM6EB.UK
 EHPT20X-VM2HB.UK
 EHPT20X-TM9HB.UK

EHST20C-YM9HB.UK
 EHST20C-VM6B.UK
 EHST20C-YM9EB.UK
 EHPT20X-VM6HB.UK
 EHPT20X-VM6B.UK

EHST20C-TM9HB.UK
 EHST20C-YM9B.UK
 EHST20C-VM6SB.UK
 EHPT20X-YM9HB.UK
 EHPT20X-YM9B.UK



RoHS PARTS LIST

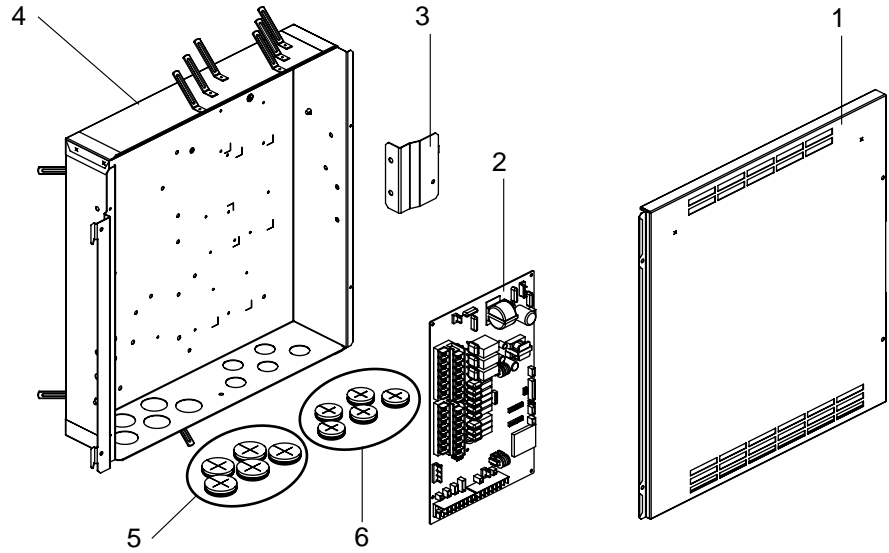
No.	RoHS	Part No.	Parts name	Specification	Q'ty /unit												Remarks							
					EHST20C-VM6HB.UK	EHST20C-YM9HB.UK	EHST20C-TM9HB.UK	EHST20C-VM2B.UK	EHST20C-VM6B.UK	EHST20C-YM9B.UK	EHST20C-VM6EB.UK	EHST20C-YM9EB.UK	EHST20C-VM6SB.UK	EHPT20X-VM2HB.UK	EHPT20X-VM6HB.UK	EHPT20X-YM9HB.UK		EHPT20X-TM9HB.UK	EHPT20X-VM6B.UK	EHPT20X-YM9B.UK				
1	G	S70 C05 641	TOP PANEL ASSY		1	1	1	1	1	1	1	1												WITH BUSH
	G	S70 C06 641	TOP PANEL ASSY										1											
	G	S70 C07 641	TOP PANEL ASSY											1										
	G	S70 C08 641	TOP PANEL ASSY												1	1	1	1	1	1				
2	G	S70 30L 655	HANDLE		2	2	2	2	2	2	2	2	2	2	2	2	2	2	2	2	2	2		
3	G	S70 C12 661	BACK PANEL		1	1	1	1	1	1	1	1	1	1	1	1	1	1	1	1	1	1		
4	G	S70 C17 662	SIDE PANEL L		1	1	1	1	1	1	1	1	1	1	1	1	1	1	1	1	1	1		
5	G	S70 C30 699	LEAF LABEL		1	1	1	1	1	1	1	1	1	1	1	1	1	1	1	1	1	1		
6	G	S70 C20 699	BRAND LABEL		1	1	1	1	1	1	1	1	1	1	1	1	1	1	1	1	1	1		
7	G	S70 C11 710	REMOCON HOLDER		1	1	1	1	1	1	1	1	1	1	1	1	1	1	1	1	1	1		
8	G	S70 C80 200	REMOCON ASSY		1	1	1	1	1	1	1	1	1	1	1	1	1	1	1	1	1	1		
9	G	S70 C18 668	FRONT PANEL ASSY		1	1	1	1	1	1	1	1	1	1	1	1	1	1	1	1	1	1		
10	G	—	REMOCON SUPPORT		1	1	1	1	1	1	1	1	1	1	1	1	1	1	1	1	1	1	BK00L347G04	
11	G	S70 C20 670	V/W PLATE											1									FOR TANK DRAIN PIPE	
12	G	S70 C04 662	SIDE PANEL R		1	1	1	1	1	1	1	1	1		1	1	1	1	1	1	1			
	G	S70 C05 662	SIDE PANEL R											1										
13	G	S70 C40 206	MANOMETER COVER		1	1	1	1	1	1	1	1	1	1	1	1	1	1	1	1	1	1		

RoHS PARTS LIST

EHST20C-VM6HB.UK
 EHST20C-VM2B.UK
 EHST20C-VM6EB.UK
 EHPT20X-VM2HB.UK
 EHPT20X-TM9HB.UK

EHST20C-YM9HB.UK
 EHST20C-VM6B.UK
 EHST20C-YM9EB.UK
 EHPT20X-VM6HB.UK
 EHPT20X-VM6B.UK

EHST20C-TM9HB.UK
 EHST20C-YM9B.UK
 EHST20C-VM6SB.UK
 EHPT20X-YM9HB.UK
 EHPT20X-YM9B.UK



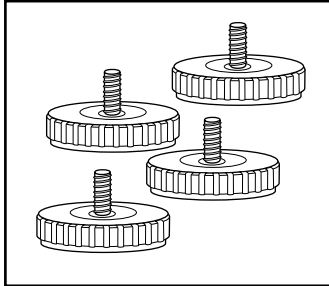
No.	RoHS	Part No.	Parts name	Specification	Q'ty /unit																Remarks	Wiring diagram symbol			
					EHST20C-VM6HB.UK	EHST20C-VM9HB.UK	EHST20C-TM9HB.UK	EHST20C-VM2B.UK	EHST20C-VM6B.UK	EHST20C-VM9B.UK	EHST20C-VM6EB.UK	EHST20C-VM9EB.UK	EHST20C-VM6SB.UK	EHPT20X-VM2HB.UK	EHPT20X-VM6HB.UK	EHPT20X-VM9HB.UK	EHPT20X-TM9HB.UK	EHPT20X-VM6B.UK	EHPT20X-VM9B.UK						
1	G	S70 C11 504	CONTROL BOX COVER	1																					
	G	S70 C12 504	CONTROL BOX COVER		1																				
	G	S70 C24 504	CONTROL BOX COVER			1																			
	G	S70 C23 504	CONTROL BOX COVER				1																		
	G	S70 C13 504	CONTROL BOX COVER					1																	
	G	S70 C14 504	CONTROL BOX COVER						1																
	G	S70 C16 504	CONTROL BOX COVER							1															
	G	S70 C17 504	CONTROL BOX COVER								1														
	G	S70 C15 504	CONTROL BOX COVER									1													
	G	S70 C18 504	CONTROL BOX COVER										1												
	G	S70 C19 504	CONTROL BOX COVER											1											
	G	S70 C20 504	CONTROL BOX COVER												1										
	G	S70 C25 504	CONTROL BOX COVER													1									
	G	S70 C21 504	CONTROL BOX COVER														1								
G	S70 C22 504	CONTROL BOX COVER															1								
2	G	S70 C20 315	ATW CONTROLLER	1	1	1	1	1	1	1	1	1	1	1	1	1	1	1	1	1	1	1		FTC4	
3	G	—	CONTROL BOX BRACKET	1	1	1	1	1	1	1	1	1	1	1	1	1	1	1	1	1	1	1		BK00L812G01	
4	G	—	CONTROL BOX	1											1									BK00J686G06	
	G	—	CONTROL BOX		1											1									BK00J686G07
	G	—	CONTROL BOX			1												1							BK00J686G17
	G	—	CONTROL BOX				1																		BK00J686G16
	G	—	CONTROL BOX					1		1		1										1			BK00J686G08
	G	—	CONTROL BOX						1		1												1		BK00J686G09
	G	—	CONTROL BOX									1													BK00J686G10
5	G	S70 C11 306	BUSH	5	5	5	5	5	5	5	5	5	5	5	5	5	5	5	5	5	5	5	5		FOR CABLE
6	G	S70 C21 306	BUSH	5	5	5	5	5	5	5	5	5	5	5	5	5	5	5	5	5	5	5	5		FOR CABLE

RoHS PARTS LIST

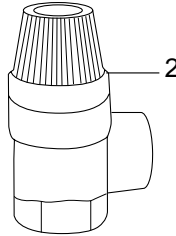
EHST20C-VM6HB.UK
 EHST20C-VM2B.UK
 EHST20C-VM6EB.UK
 EHPT20X-VM2HB.UK
 EHPT20X-TM9HB.UK

EHST20C-YM9HB.UK
 EHST20C-VM6B.UK
 EHST20C-YM9EB.UK
 EHPT20X-VM6HB.UK
 EHPT20X-VM6B.UK

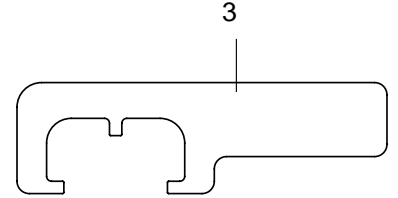
EHST20C-TM9HB.UK
 EHST20C-YM9B.UK
 EHST20C-VM6SB.UK
 EHPT20X-YM9HB.UK
 EHPT20X-YM9B.UK



1



2



3

No.	RoHS	Part No.	Parts name	Specification	Q'ty /unit														Remarks	Wiring diagram symbol	Required regular replacement	
					EHST20C-VM6HB.UK	EHST20C-YM9HB.UK	EHST20C-TM9HB.UK	EHST20C-VM2B.UK	EHST20C-VM6B.UK	EHST20C-YM9B.UK	EHST20C-VM6EB.UK	EHST20C-YM9EB.UK	EHST20C-VM6SB.UK	EHPT20X-VM2HB.UK	EHPT20X-VM6HB.UK	EHPT20X-YM9HB.UK	EHPT20X-TM9HB.UK	EHPT20X-VM6B.UK				EHPT20X-YM9B.UK
1	G	S70 C40 097	ADJUST BOLT		4	4	4	4	4	4	4	4	4	4	4	4	4	4	4	ACCESSORY		
2	G	S70 C20 404	PRESSURE RELIEF VALVE 10bar		1	1	1	1	1	1	1	1	1	1	1	1	1	1	1	ACCESSORY		6 years
3	G	S70 C10 406	JIG (FOR BACK NUT)												1					ACCESSORY		
4	G	S70 C23 202	THERMISTOR (TANK WATER TEMP)		1	1	1	1	1	1	1	1	1	1	1	1	1	1	1		THW5	
5	G	S70 C20 202	THERMISTOR (FLOW WATER TEMP & RETURN WATER TEMP)		1	1	1	1	1	1	1	1	1	1	1	1	1	1	1		THW1/2	
6	G	S70 C50 202	THERMISTOR (LIQUID REFRIGERANT TEMP)		1	1	1	1	1	1	1	1	1	1							TH2	
7	G	S70 C44 460	GASKET G1 - 1/2"	G 1 - 1/2"	2	2	2	2	2	2	2	2	2	2	2	2	2	2	2	FOR CONNECTION OF WATER CIRCUIT (WATER PUMP)		20,000 hrs (3 years)
8	G	S70 C55 460	GASKET G1"	G1"	12	12	12	12	12	12	12	12	12	12	11	11	11	11	11	FOR CONNECTION OF WATER CIRCUIT		
9	G	S70 C66 460	GASKET G3/4"	G3/4"	7	7	7	7	7	7	7	7	7	7	7	7	7	7	7	FOR CONNECTION OF WATER CIRCUIT		
10	G	S70 C77 460	GASKET G3/8"	G3/8"	1	1	1	1	1	1	1			1	1	1	1	1	1	FOR CONNECTION OF WATER CIRCUIT		
11	G	S70 C88 460	GASKET G1/4"	G1/4"	1	1	1	1	1	1	1	1	1	1	1	1	1	1	1	FOR CONNECTION OF WATER CIRCUIT (MANOMETER)		
12	G	—	PIPE COVER 10	ID10*OD35*L980	√	√	√	√	√	√	√	√	√							BH33T353R03 FOR REFRIGERANT (LIQUID) PIPE		
13	G	—	PIPE COVER 19	ID19*OD44*L1000	√	√	√	√	√	√	√	√	√							BH33T353U01 FOR REFRIGERANT (GAS) PIPE		
14	G	—	PIPE COVER 25	ID25*OD51*L900	√	√	√	√	√	√	√	√	√	√	√	√	√	√	√	BH33T353H06 FOR WATER PIPE		
15	G	—	PIPE COVER ELBOW		√	√	√	√	√	√	√	√	√	√	√	√	√	√	√	BH33T353L01 FOR ELBOW PIPE BESIDE TANK		

Parts number that is circled is not shown in the figure.

Do not reuse the gaskets (No.7 to 11) that were once removed, but be sure to replace with a new one.

2 OPTIONAL PARTS

2-1. IMMERSION HEATER (1Ph 3kW)

Part No.	PAC-IH03V-E
----------	-------------

2-2. EHPT ACCESSORIES for UK

Part No.	PAC-WK01UK-E
----------	--------------

* Optional part for EHPT20X-VM2HB

2-3. WIRELESS REMOTE CONTROLLER

Part No.	PAR-WT50R-E
----------	-------------

2-4. WIRELESS RECEIVER

Part No.	PAR-WR51R-E
----------	-------------

2-5. REMOTE SENSOR

Part No.	PAC-SE41TS-E
----------	--------------

2-6. JOINT PIPE ($\phi 15.88 \rightarrow \phi 12.7$)

Part No.	PAC-SH50RJ-E
----------	--------------

2-7. JOINT PIPE ($\phi 9.52 \rightarrow \phi 6.35$)

Part No.	PAC-SH30RJ-E
----------	--------------

2-8. THERMISTOR

Part No.	PAC-TH011-E
----------	-------------

2-9. HIGH TEMPERATURE THERMISTOR

Part No.	PAC-TH011HT-E
----------	---------------

MITSUBISHI ELECTRIC CORPORATION

HEAD OFFICE : TOKYO BLDG., 2-7-3, MARUNOUCHI, CHIYODA-KU, TOKYO 100-8310, JAPAN