

# PARTS CATALOG

## R410A

Outdoor unit

[Model Name]

PUHZ-SW40VHA

PUHZ-SW50VHA

PUHZ-SW50VKA

Salt proof model

PUHZ-SW40VHA-BS

PUHZ-SW50VHA-BS

PUHZ-SW50VKA-BS

[Service Ref.]

**PUHZ-SW40VHA**

**PUHZ-SW40VHAR1**

**PUHZ-SW50VHA**

**PUHZ-SW50VHAR1**

**PUHZ-SW50VKA**

**PUHZ-SW40VHA-BS**

**PUHZ-SW40VHAR1-BS**

**PUHZ-SW50VHA-BS**

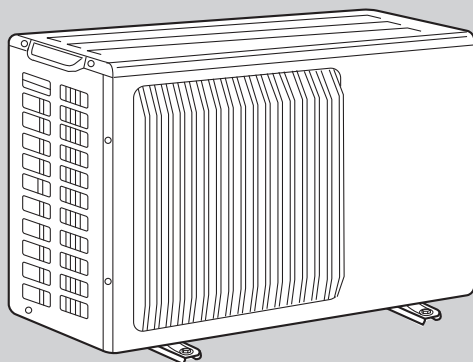
**PUHZ-SW50VHAR1-BS**

**PUHZ-SW50VKA-BS**

Revision:

- Some descriptions have been modified in REVISED EDITION-D.

- Please void OCB525 REVISED EDITION-C.



## CONTENTS

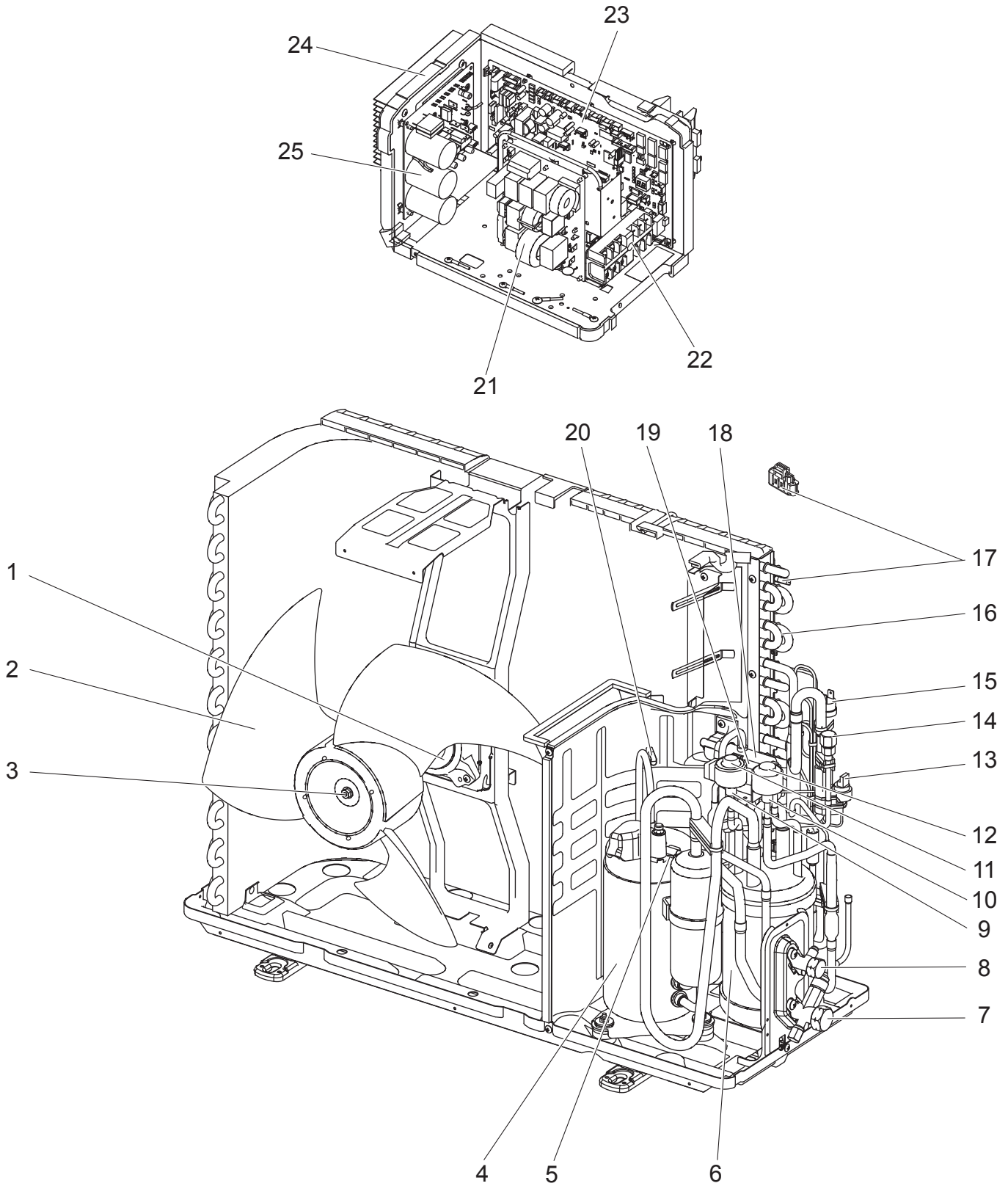
1. SERVICE PARTS LIST .....	2
-----------------------------	---

**SERVICE MANUAL (OCH525)**

**FUNCTIONAL AND ELECTRICAL PARTS**

**PUHZ-SW40VHA  
PUHZ-SW40VHA-BS**

**PUHZ-SW50VHA  
PUHZ-SW50VHA-BS**



Parts numbers that are circled are not shown in the figure.

No.	Parts No.	Parts Name	Specification	Q'ty/unit				Remarks (Drawing No.)	Wiring Diagram Symbol	Recom- mended Q'ty
				PUHZ-SW40VHA	PUHZ-SW40VHA-BS	PUHZ-SW50VHA	PUHZ-SW50VHA-BS			
1	R01 E52 221	FAN MOTOR		1	1	1	1		MF1	
2	R01 E07 115	PROPELLER FAN		1	1	1	1			
3	R01 E03 097	NUT M6-L		1	1	1	1			
4	T97 418 607	COMPRESSOR	SNB130FGCM2	1	1	1	1	Includes RUBBER MOUNT	MC	
5	R01 H92 202	THERMISTOR	Comp. Surface	1	1	1	1		TH34	
6	R01 E66 440	POWER RECEIVER		1	1	1	1			
7	R01 E28 410	STOP VALVE 1/2F	1/2	1	1	1	1			
8	R01 E27 410	STOP VALVE 1/4F	1/4	1	1	1	1			
9	R01 H34 401	LEV ASSY		1	1	1	1	Includes LEV-B COIL		
10	R01 H33 401	LEV ASSY		1	1	1	1	Includes LEV-A COIL		
11	R01 H12 242	COIL (LEV)/ XAP-5P RED	CAM type	1	1	1	1		LEV-B	
12	R01 H11 242	COIL (LEV)/ XAP-5P WH	CAM type	1	1	1	1		LEV-A	
13	R01 E10 208	HIGH PRESSURE SENSOR		1	1	1	1		63HS	
14	R01 E18 413	CHARGE PLUG /ST		1	1	1	1			
15	R01 E06 208	HIGH PRESSURE SWITCH		1	1	1	1		63H	
16	T7W E69 408	HEAT EXCHANGER		1	1	1	1			
17	R01 E97 202	THERMISTOR W	2-Phase Pipe, Ambient	1	1	1	1		TH6, 7	
18	R01 E29 403	4 WAY VALVE		1	1	1	1		21S4	
19	T7W E34 242	SOLENOID COIL (21S4)		1	1	1	1		21S4	
20	R01 E18 201	THERMISTOR (DIS)	Discharge	1	1	1	1		TH4	
21	T7W E20 346	NOISE FILTER		1	1	1	1		N.F.	
22	T7W E62 716	T.B./ LNE.S1.S2.S3	6P (L,N,⊕,S1,S2,S3)	1	1	1	1		TB1	
23	T7W G71 315	CONTROLLER BOARD		1	1	1	1		C.B.	
24	—	ELECTRICAL PARTS BOX		1	1	1	1	(RG00N040G12)		
25	T7W E80 313	POWER BOARD		1	1	1	1		P.B.	
26	R01 E22 259	REACTOR		1	1	1	1		ACL	
27	R01 E14 239	FUSE 6.3 A 250 V	6.3 A 250 V	4	4	4	4		F1,2,3,4	
28	R01 E99 202	THERMISTOR (HS)	Heat Sink	1	1	1	1		TH8	
29	R01 E98 202	THERMISTOR	Liquid	1	1	1	1		TH3	

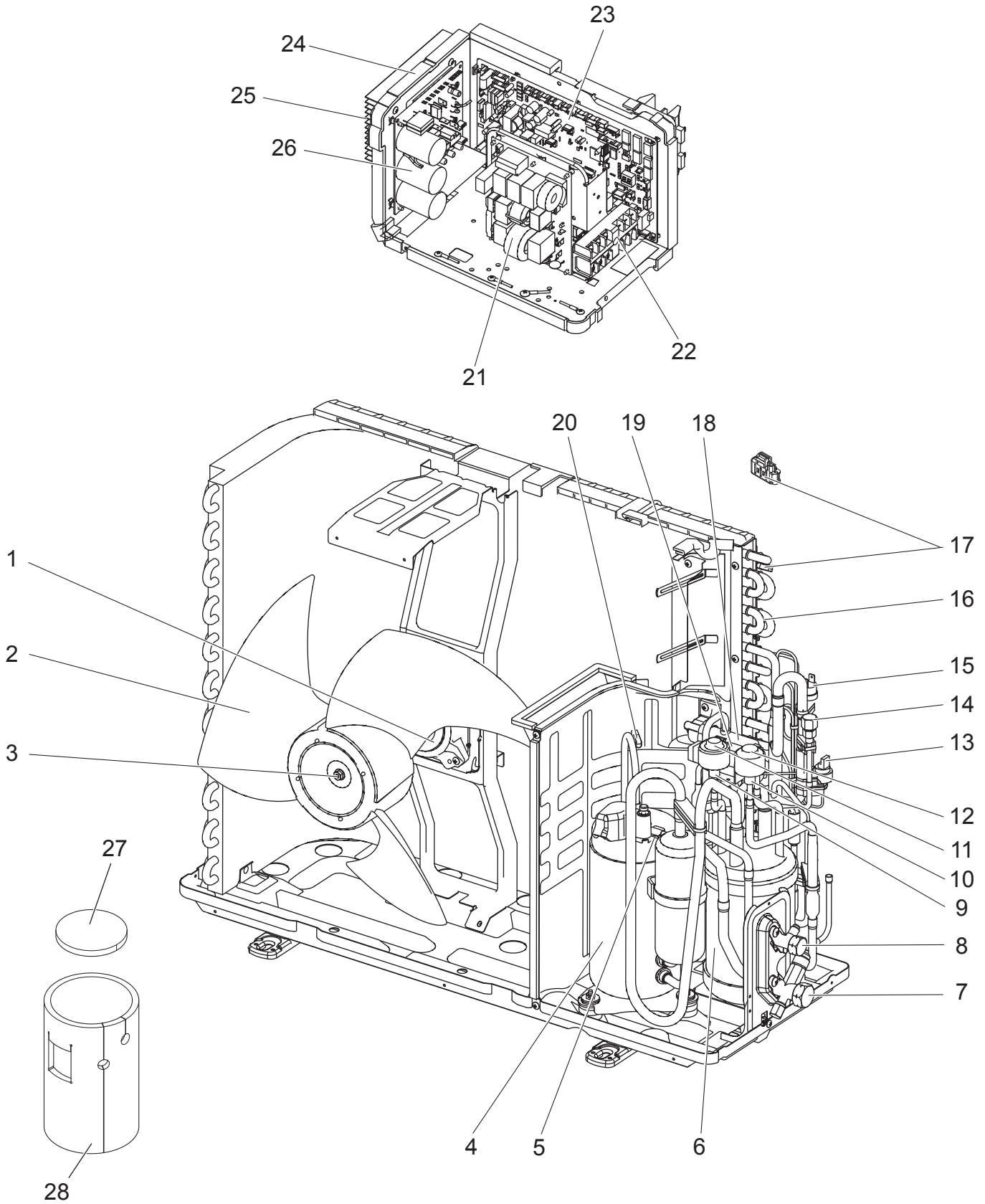
**FUNCTIONAL AND ELECTRICAL PARTS**

**PUHZ-SW40VHAR1**

**PUHZ-SW40VHAR1-BS**

**PUHZ-SW50VHAR1**

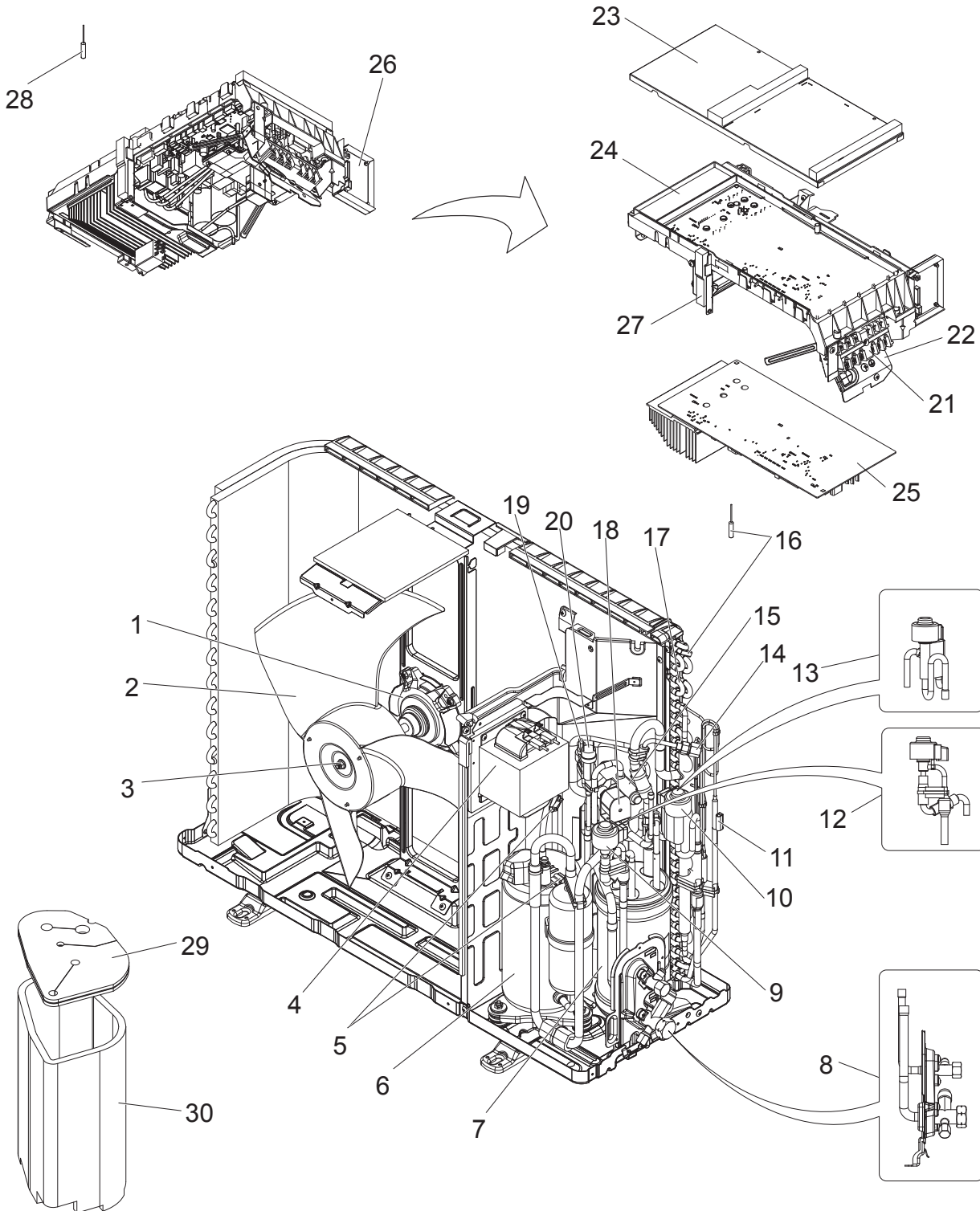
**PUHZ-SW50VHAR1-BS**



Parts numbers that are circled are not shown in the figure.

No.	Parts No.	Parts Name	Specification	Q'ty/unit				Remarks (Drawing No.)	Wiring Diagram Symbol	Recom- mended Q'ty
				PUHZ-SW40VHAR1	PUHZ-SW40VHAR1-BS	PUHZ-SW50VHAR1	PUHZ-SW50VHAR1-BS			
1	R01 E52 221	FAN MOTOR		1	1	1	1		MF1	
2	R01 E07 115	PROPELLER FAN		1	1	1	1			
3	R01 E03 097	NUT M6-L		1	1	1	1			
4	T97 418 607	COMPRESSOR	SNB130FGCM2	1	1	1	1	Includes RUBBER MOUNT	MC	
5	R01 H92 202	THERMISTOR	Comp. Surface	1	1	1	1		TH34	
6	R01 E66 440	POWER RECEIVER		1	1	1	1			
7	R01 E28 410	STOP VALVE 1/2F	1/2	1	1	1	1			
8	R01 E27 410	STOP VALVE 1/4F	1/4	1	1	1	1			
9	R01 H34 401	LEV ASSY		1	1	1	1	Includes LEV-B COIL		
10	R01 H33 401	LEV ASSY		1	1	1	1	Includes LEV-A COIL		
11	R01 H12 242	COIL (LEV)/ XAP-5P RED	CAM type	1	1	1	1		LEV-B	
12	R01 H11 242	COIL (LEV)/ XAP-5P WH	CAM type	1	1	1	1		LEV-A	
13	R01 E10 208	HIGH PRESSURE SENSOR		1	1	1	1		63HS	
14	R01 E18 413	CHARGE PLUG /ST		1	1	1	1			
15	R01 E06 208	HIGH PRESSURE SWITCH		1	1	1	1		63H	
16	T7W E69 408	HEAT EXCHANGER		1	1	1	1			
17	R01 E97 202	THERMISTOR W	2-Phase Pipe, Ambient	1	1	1	1		TH6, 7	
18	R01 E29 403	4 WAY VALVE		1	1	1	1		21S4	
19	T7W E34 242	SOLENOID COIL (21S4)		1	1	1	1		21S4	
20	R01 E18 201	THERMISTOR (DIS)	Discharge	1	1	1	1		TH4	
21	T7W E20 346	NOISE FILTER		1	1	1	1		N.F.	
22	T7W E62 716	T.B./ LNE.S1.S2.S3	6P (L,N,⊕,S1,S2,S3)	1	1	1	1		TB1	
23	T7W G71 315	CONTROLLER BOARD		1	1	1	1		C.B.	
24	—	ELECTRICAL PARTS BOX		1	1	1	1	(RG00N040G12)		
25	T7W A02 371	HEAT SINK		1	1	1	1	Includes SCREWS		
26	T7W E80 313	POWER BOARD		1	1	1	1		P.B.	
27	R01 A65 602	COMP FELT(TOP)		1	1	1	1			
28	R01 A64 602	COMP FELT(BODY)		1	1	1	1			
29	T7W A01 510	LEAD ASSY COMP		1	1	1	1			
30	R01 E22 259	REACTOR		1	1	1	1		ACL	
31	R01 E14 239	FUSE 6.3 A 250 V	6.3 A 250 V	4	4	4	4		F1,2,3,4	
32	R01 E99 202	THERMISTOR (HS)	Heat Sink	1	1	1	1		TH8	
33	R01 E98 202	THERMISTOR	Liquid	1	1	1	1		TH3	

**FUNCTIONAL AND ELECTRICAL PARTS**  
**PUHZ-SW50VKA**  
**PUHZ-SW50VKA-BS**

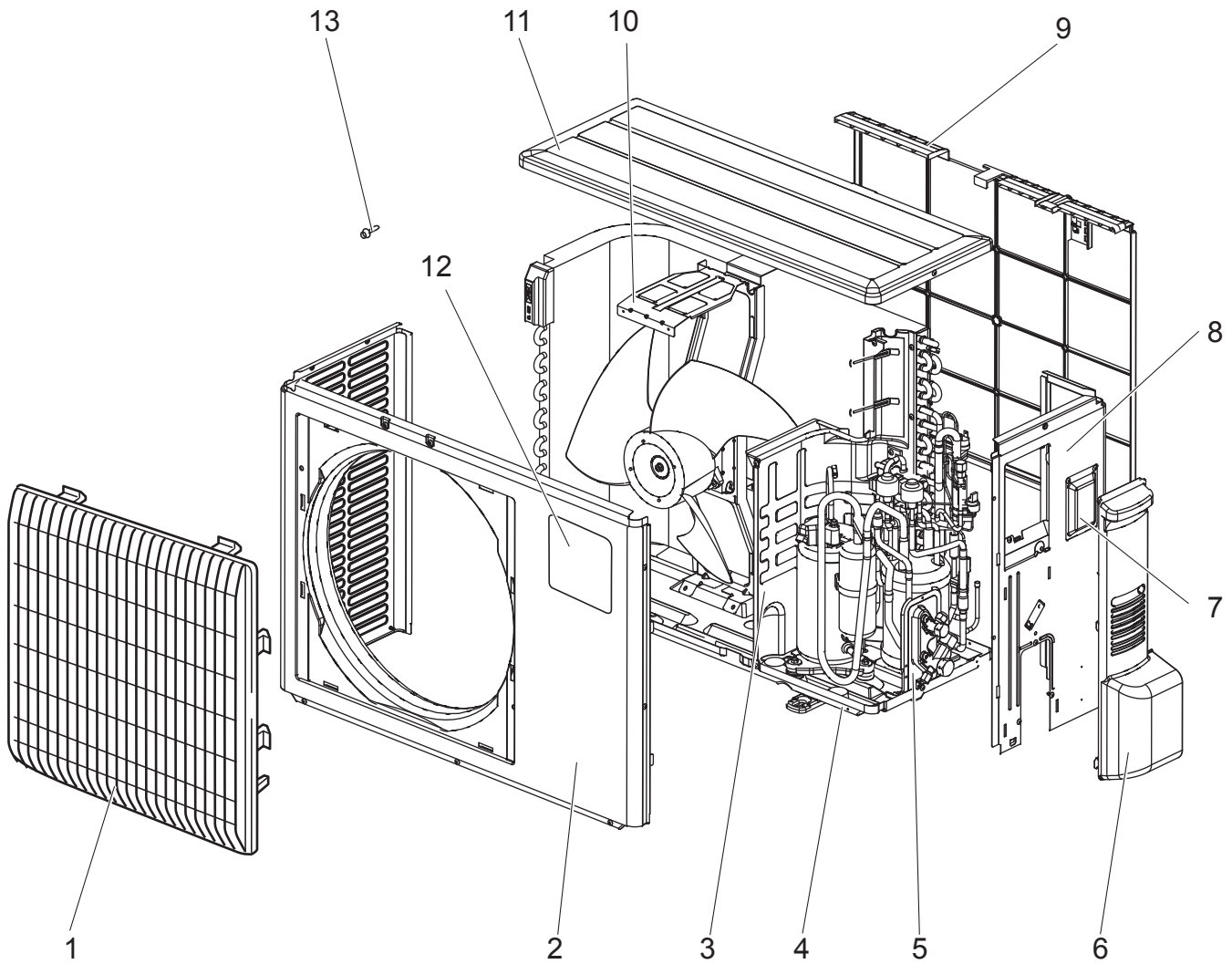


Parts numbers that are circled are not shown in the figure.

No.	Parts No.	Parts Name	Specification	Q'ty/unit		Remarks (Drawing No.)	Wiring Diagram Symbol
				PUHZ-SW50VKA	PUHZ-SW50VKA-BS		
1	R01 E55 221	FAN MOTOR		1	1		MF1
2	R01 E11 115	PROPELLER FAN		1	1		
3	R01 E03 097	NUT M6-L		1	1		
4	R01 E46 259	REACTOR		1	1		ACL
5	R01 M08 202	THERMISTOR DS	Discharge, Comp. surface	1	1		TH4,TH34
6	T97 435 607	COMPRESSOR	SNB130FTCM2	1	1	Includes RUBBER MOUNT	MC
7	R01 H69 440	POWER RECEIVER		1	1		
8	R01 E34 410	STOP VALVE ASSY	1/4F,1/2F	1	1	Includes STOP VALVES	
9	R01 H38 242	COIL (LEV)/ XAP-5P RED	CAM type	1	1		LEV-B
10	R01 H37 242	COIL (LEV)/ XAP-5P WH	CAM type	1	1		LEV-A
11	R01 N25 202	THERMISTOR	Liquid	1	1		TH3
12	R01 R83 401	LEV ASSY-B/ REC-V		1	1	Includes LEV-B COIL	
13	R01 R82 401	LEV ASSY-A/ C-REC		1	1	Includes LEV-A COIL	
14	R01 E24 413	CHARGE PLUG /LB90		1	1		
15	R01 E29 403	4 WAY VALVE		1	1		21S4
16	R01 H83 202	THERMISTOR W	2-Phase Pipe, Ambient	1	1		TH6, 7
17	R01 H55 408	HEAT EXCHANGER		1	1		
18	T7W E62 242	SOLENOID COIL (21S4)		1	1		21S4
19	R01 H07 208	HIGH PRESSURE SENSOR		1	1		63HS
20	R01 H06 208	HIGH PRESSURE SWITCH		1	1		63H
21	T7W E62 716	T.B./ LNE.S1.S2.S3	6P (L,N,⊕,S1,S2,S3)	1	1		TB1
22	—	T.B.SUPPORT		1	1	(BK00L098G07)	
23	R01 E00 325	P.B.COVER		1	1		
24	R01 E00 327	P.B.SUPPORT		1	1		
25	T7W GU0 315	CONTROLLER BOARD		1	1	Includes HEAT SINK	C.B.
26	R01 E00 316	SWITCH BOARD		1	1		S.B.
27	R01 E01 327	H.S.SUPPORT		1	1		
28	R01 H81 202	THERMISTOR (HS)	Heat Sink	1	1		TH8
29	R01 A53 602	COMP FELT(TOP)		1	1		
30	R01 A52 602	COMP FELT(BODY)		1	1		
31	R01 E21 239	FUSE 10A 250 V	10A 250 V	2	2		F1,2
32	R01 E17 239	FUSE 3.15 A 250 V	3.15 A 250 V	2	2		F3,4
33	R01 E11 510	LEAD ASSY COMP		1	1		

**STRUCTURAL PARTS**  
**PUHZ-SW40VHA**  
**PUHZ-SW40VHA-BS**  
**PUHZ-SW40VHAR1**  
**PUHZ-SW40VHAR1-BS**

**PUHZ-SW50VHA**  
**PUHZ-SW50VHA-BS**  
**PUHZ-SW50VHAR1**  
**PUHZ-SW50VHAR1-BS**

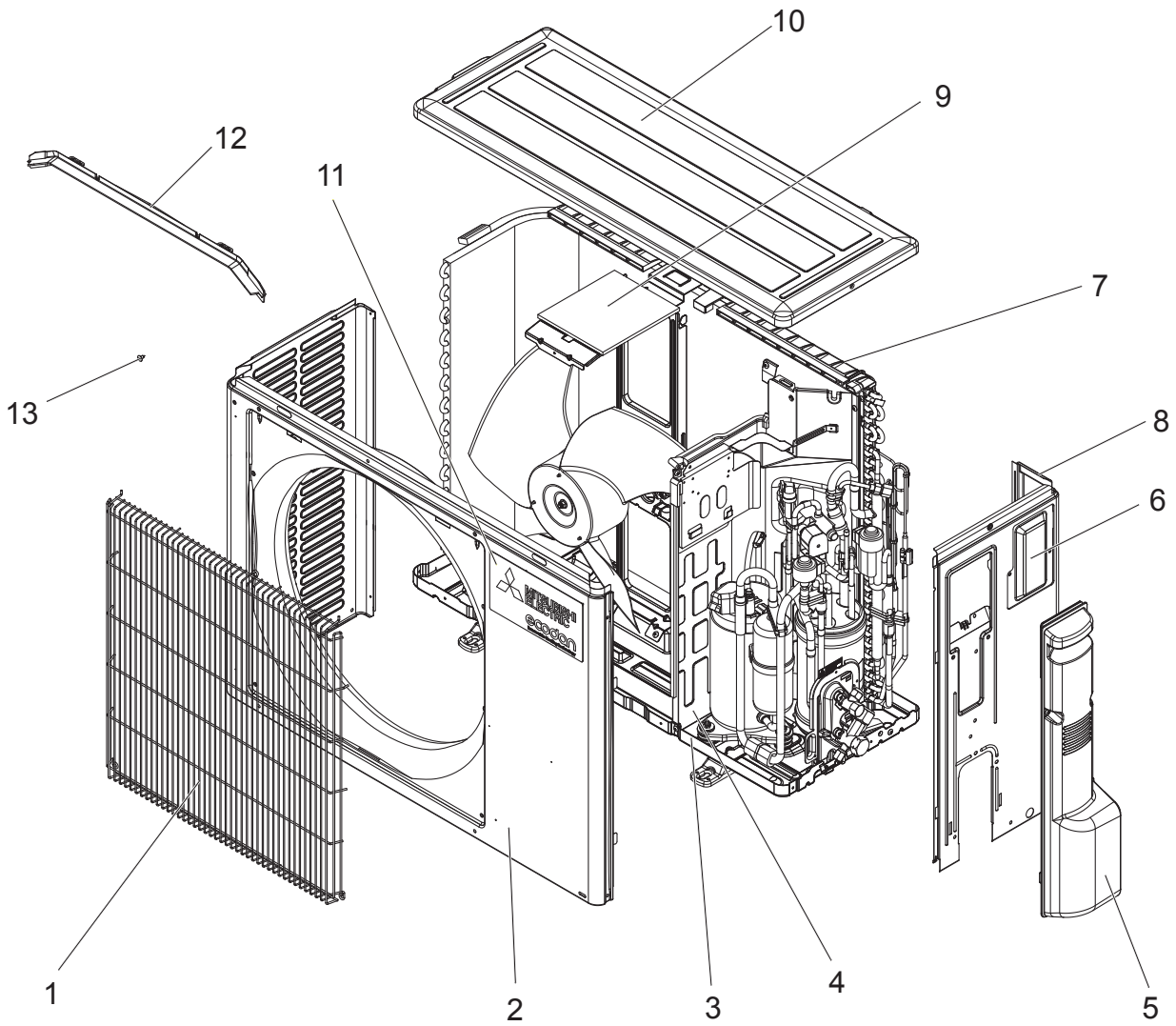






No.	Parts No.	Parts Name	Specification	Q'ty/unit								Remarks (Drawing No.)	
				PUHZ-SW40VHA	PUHZ-SW40VHA-BS	PUHZ-SW40VHAR1	PUHZ-SW40VHAR1-BS	PUHZ-SW50VHA	PUHZ-SW50VHA-BS	PUHZ-SW50VHAR1	PUHZ-SW50VHAR1-BS		
1	R01 E30 691	GRILLE		1	1	1	1	1	1	1	1	1	
2	R01 E25 668	FRONT PANEL		1	1	1	1	1	1	1	1	1	
3	—	SEPARATOR		1	1	1	1	1	1	1	1	1	(SU00B229G38)
4	R01 E48 686	BASE ASSY		1	1	1	1	1	1	1	1	1	
5	—	VALVE BED		1	1	1	1	1	1	1	1	1	(DU02Y361G02)
6	T7W E12 668	SERVICE PANEL		1	1	1	1	1	1	1	1	1	
7	R01 E01 518	SERVICE PANEL		1	1	1	1	1	1	1	1	1	
8	T7W E09 682	REAR PANEL		1	1	1	1	1	1	1	1	1	
9	R01 E02 684	CONDENSER NET		1	1	1	1	1	1	1	1	1	
10	R01 E52 130	MOTOR SUPPORT		1	1	1	1	1	1	1	1	1	
11	T7W E11 641	TOP PANEL		1	1	1	1	1	1	1	1	1	
12	—	LABEL (MITSUBISHI)		1	1			1	1				(DG79R130H03)
	—	LABEL (MITSUBISHI ECODAN)		1	1	1	1	1	1	1	1	1	(BH79T593H01)
13	—	F.ST SCREW	(4×10)	19	19	19	19	19	19	19	19	19	(Z504K189H37)

**STRUCTURAL PARTS**  
**PUHZ-SW50VKA**  
**PUHZ-SW50VKA-BS**





No.	Parts No.	Parts Name	Specification	Q'ty/unit		Remarks (Drawing No.)
				PUHZ-SW50VKA	PUHZ-SW50VKA-BS	
1	R01 E61 691	GRILLE		1	1	
2	R01 E21 668	FRONT PANEL		1	1	
3	R01 E43 686	BASE ASSY		1	1	
4	—	SEPARATOR		1	1	(BK00J192G31)
5	R01 E28 667	SERVICE PANEL		1	1	
6	R01 E03 633	SERVICE PLATE		1	1	
7	R01 E04 684	REAR GUARD		1	1	
8	R01 E12 682	BACK PANEL		1	1	Including SERVICE PLATE
9	R01 E45 130	MOTOR SUPPORT		1	1	
10	T7W E15 641	TOP PANEL		1	1	
11	T7W A03 005	BRAND LABEL (ECODAN)		1	1	
12	R01 E00 631	ICE GUARD		1	1	
13	—	TS.ST SCREW	(4×10)	17	17	(Z504K189H37)

# MITSUBISHI ELECTRIC CORPORATION

HEAD OFFICE : TOKYO BUILDING., 2-7-3, MARUNOUCHI, CHIYODA-KU, TOKYO 100-8310, JAPAN

---

©Copyright 2012 MITSUBISHI ELECTRIC CORPORATION  
Issued: Mar. 2019 No.OCB525 REVISED EDITION-D  
Issued: Jul. 2015 No.OCB525 REVISED EDITION-C  
Issued: Nov. 2014 No.OCB525 REVISED EDITION-B  
Issued: Feb. 2013 No.OCB525 REVISED EDITION-A  
Published: Oct. 2012 No.OCB525  
Made in Japan

Specifications are subject to change without notice.