

PARTS CATALOG

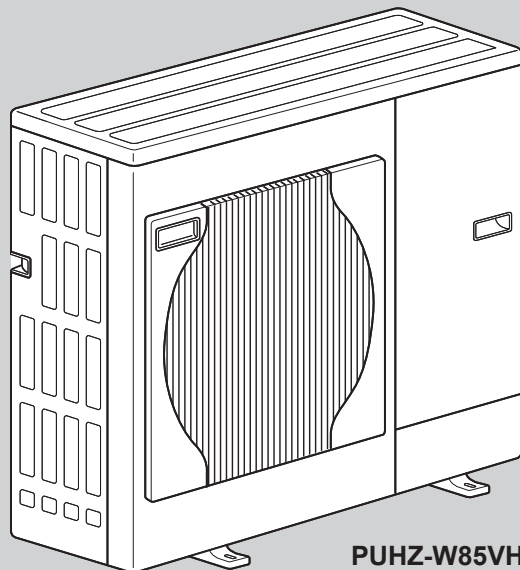
R410A
Outdoor Unit
[Model Name]
PUHZ-W50VHA
PUHZ-W50VHA-BS
PUHZ-W85VHA
PUHZ-W85VHA-BS
PUHZ-HW112YHA
PUHZ-HW112YHA-BS
PUHZ-HW112YHA2
PUHZ-HW112YHA2-BS
PUHZ-HW140VHA
PUHZ-HW140VHA-BS
PUHZ-HW140YHA
PUHZ-HW140YHA-BS
PUHZ-HW140VHA2
PUHZ-HW140VHA2-BS
PUHZ-HW140YHA2
PUHZ-HW140YHA2-BS
Revision:

- Added
 PUHZ-HW112YHA2R7,
 PUHZ-HW112YHA2R7-BS,
 PUHZ-HW140VHA2R7,
 PUHZ-HW140VHA2R7-BS,
 PUHZ-HW140YHA2R7 and
 PUHZ-HW140YHA2R7-BS in
 REVISED EDITION-P.
- Some descriptions have been
 modified.

 OCB439 REVISED EDITION-N
 is void.

[Service Ref.]

Refer to page 2.


PUAZ-W85VHA(R1)
PUAZ-W85VHA(R1)-BS
CONTENTS

1. SERVICE PARTS LIST 4
2. OPTIONAL PARTS 42

SERVICE MANUAL (OCH439)

[Service Ref.]

PUHZ-W50VHA

PUHZ-W50VHAR1

PUHZ-W50VHAR2

PUHZ-W50VHAR3

PUHZ-W85VHA

PUHZ-W85VHAR1

PUHZ-HW112YHA

PUHZ-HW112YHA2

PUHZ-HW112YHA2R1

PUHZ-HW112YHA2R3

PUHZ-HW112YHA2R4

PUHZ-HW112YHA2R5

PUHZ-HW112YHA2R6

PUHZ-HW112YHA2R7

PUHZ-HW140VHA

PUHZ-HW140YHA

PUHZ-HW140VHA2

PUHZ-HW140VHA2R1

PUHZ-HW140VHA2R3

PUHZ-HW140VHA2R4

PUHZ-HW140VHA2R5

PUHZ-HW140VHA2R6

PUHZ-HW140VHA2R7

PUHZ-HW140YHA2

PUHZ-HW140YHA2R1

PUHZ-HW140YHA2R3

PUHZ-HW140YHA2R4

PUHZ-HW140YHA2R5

PUHZ-HW140YHA2R6

PUHZ-HW140YHA2R7

PUHZ-W50VHAR1-BS

PUHZ-W50VHAR2-BS

PUHZ-W50VHAR3-BS

PUHZ-W85VHA-BS

PUHZ-W85VHAR1-BS

PUHZ-HW112YHA-BS

PUHZ-HW112YHA2-BS

PUHZ-HW112YHA2R1-BS

PUHZ-HW112YHA2R3-BS

PUHZ-HW112YHA2R4-BS

PUHZ-HW112YHA2R5-BS

PUHZ-HW112YHA2R6-BS

PUHZ-HW112YHA2R7-BS

PUHZ-HW140VHA-BS

PUHZ-HW140YHA-BS

PUHZ-HW140VHA2-BS

PUHZ-HW140VHA2R1-BS

PUHZ-HW140VHA2R2-BS

PUHZ-HW140VHA2R3-BS

PUHZ-HW140VHA2R4-BS

PUHZ-HW140VHA2R5-BS

PUHZ-HW140VHA2R6-BS

PUHZ-HW140VHA2R7-BS

PUHZ-HW140YHA2-BS

PUHZ-HW140YHA2R1-BS

PUHZ-HW140YHA2R3-BS

PUHZ-HW140YHA2R4-BS

PUHZ-HW140YHA2R5-BS

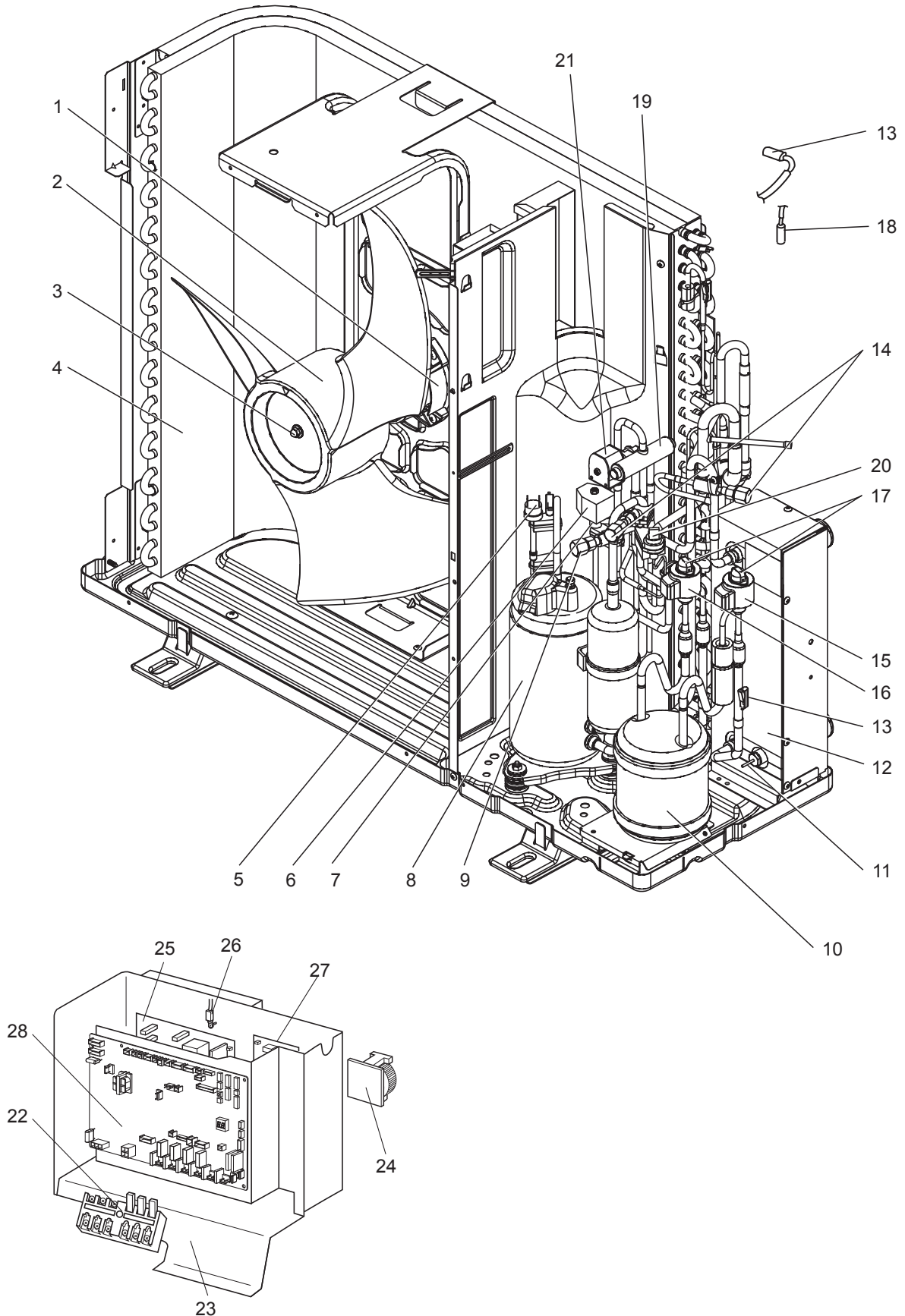
PUHZ-HW140YHA2R6-BS

PUHZ-HW140YHA2R7-BS

This page is intentionally left blank.

FUNCTIONAL AND ELECTRICAL PARTS

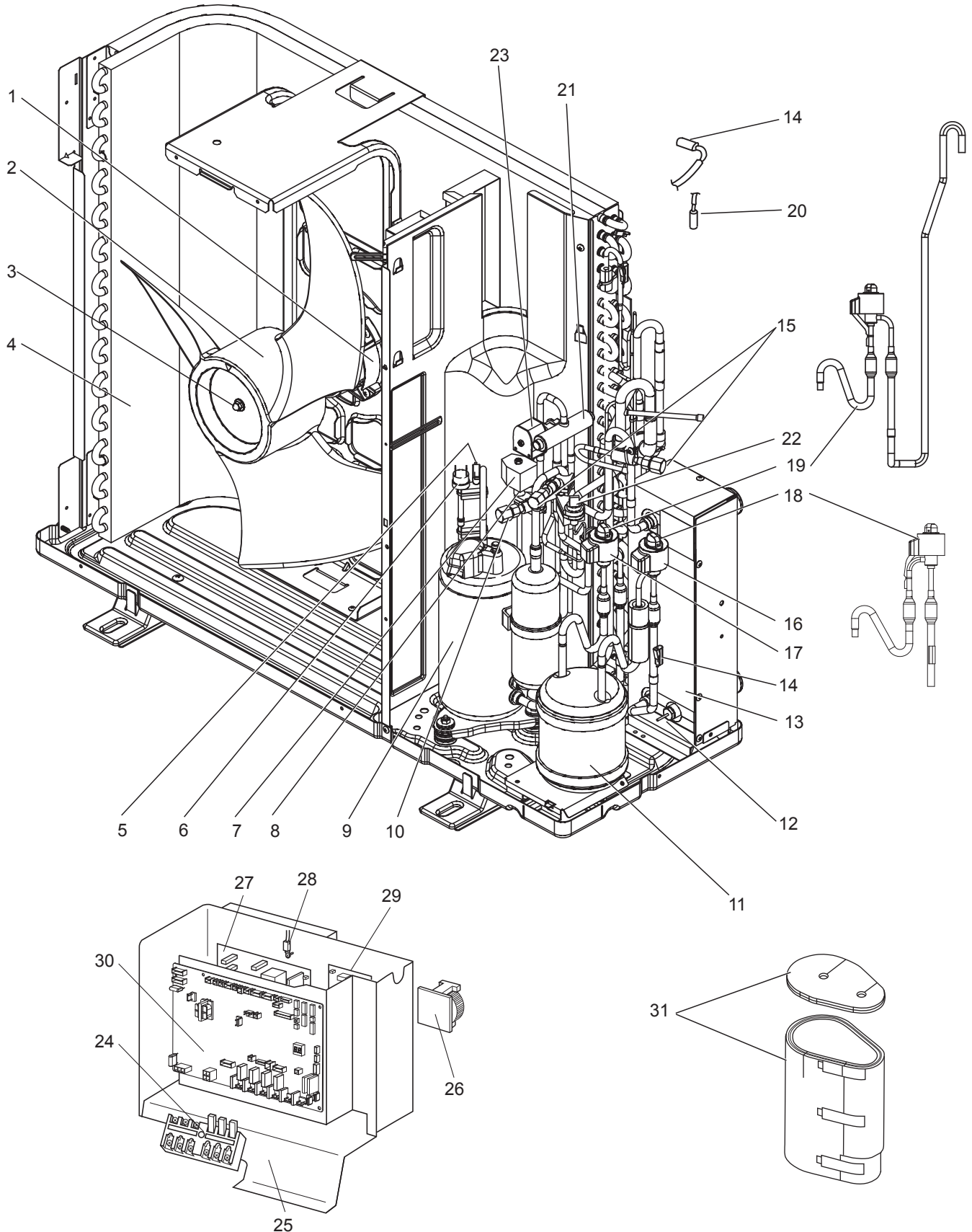
- | | |
|----------------------|-------------------------|
| PUHZ-W50VHA | PUHZ-W50VHA-BS |
| PUHZ-W50VHAR1 | PUHZ-W50VHAR1-BS |
| PUHZ-W50VHAR2 | PUHZ-W50VHAR2-BS |

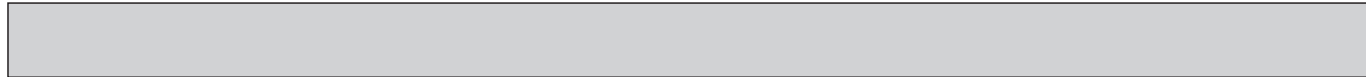


Parts numbers that are circled are not shown in the figure.

No.	Parts No.	Parts Name	Specification	Q'ty/unit						Remarks (Drawing No.)	Wiring Diagram Symbol
				PUHZ-W50VHA	PUHZ-W50VHAR1	PUHZ-W50VHAR2	PUHZ-W50VHA-BS	PUHZ-W50VHAR1-BS	PUHZ-W50VHAR2-BS		
1	T7W E31 763	FAN MOTOR		1	1		1	1			MF1
	R01 E70 221	FAN MOTOR				1			1		MF1
2	R01 E12 115	PROPELLER FAN		1	1	1	1	1	1		
3	R01 E09 097	NUT M6		1	1	1	1	1	1		
4	T7W E50 408	HEAT EXCHANGER		1			1				
	T7W E66 408	HEAT EXCHANGER			1	1		1	1		
5	R01 E06 208	HIGH PRESSURE SWITCH		1	1	1	1	1	1		63H
6	T7W E52 242	SOLENOID COIL (SV)		1	1	1	1	1	1		SV
7	R01 E15 428	SOLENOID VALVE		1	1	1	1	1	1		
8	T92 286 607	COMPRESSOR	SNB130FGCM	1	1	1	1	1	1	Includes RUBBER MOUNTS	MC
9	R01 E24 413	CHARGE PLUG / LB90		1	1	1	1	1	1		
10	T7W E24 440	RECEIVER		1	1	1	1	1	1		
11	T7W E19 202	THERMISTOR (PLATE.HEX)	Inlet Water	1	1		1	1			TH32
	R01 H91 202	THERMISTOR (PLATE.HEX)	Inlet Water			1			1		TH32
12	T7W E68 408	PLATE HEAT EXCHANGER	MWA1-28LM	1	1	1	1	1	1		
13	R01 H99 202	THERMISTOR W	Plate Hex Liquid, Ambient	1	1	1	1	1	1		TH6/TH7
14	R01 E18 413	CHARGE PLUG /ST		2	2	2	2	2	2		
15	R01 E49 242	COIL (LEV) /XAP-6P RED	UKV type	1	1	1	1	1	1		LEV-B
16	R01 E91 242	COIL (LEV) /XAP-6P WH	UKV type	1	1	1	1	1	1		LEV-A
17	R01 H22 401	LEV		2	2	2	2	2	2		
18	R01 N03 202	THERMISTOR	Liquid	1	1	1	1	1	1		TH3
19	R01 E29 403	4 WAY VALVE		1	1	1	1	1	1		21S4
20	R01 E07 208	HIGH PRESSURE SENSOR		1	1	1	1	1	1		63HS
21	T7W E39 242	SOLENOID COIL (21S4)		1	1	1	1	1	1		21S4
22	T7W E61 716	T.B. /LNE.S1.S2.S3	6P (L, N, ⊕, S1, S2, S3)	1	1	1	1	1	1		TB1
23	—	ELECTRICAL PARTS BOX		1	1	1	1	1	1	(BK00B055GB8)	
24	R01 E33 259	REACTOR		1	1	1	1	1	1		ACL
25	T7W E78 313	POWER BOARD		1	1	1	1	1	1		P.B.
26	R01 E99 202	THERMISTOR (HS)	Heat Sink	1	1	1	1	1	1		TH8
27	T7W E21 346	NOISE FILTER		1	1	1	1	1	1		N.F.
28	T7W F13 315	CONTROLLER BOARD		1	1		1	1			C.B.
	T7W F17 315	CONTROLLER BOARD				1			1		C.B.
29	R01 E26 201	THERMISTOR (DIS)	Discharge	1	1	1	1	1	1		TH4
30	—	HEAT SINK		1	1	1	1	1	1	(BK11C116H14)	
31	R01 E06 239	FUSE 6.3 A 250V	6.3 A, 250 V	4	4	4	4	4	4		F1, 2, 3, 4
32	T7W E07 201	SHELL THERMISTOR	Comp. Surface			1			1		TH33

FUNCTIONAL AND ELECTRICAL PARTS
PUHZ-W50VHAR3
PUHZ-W50VHAR3-BS

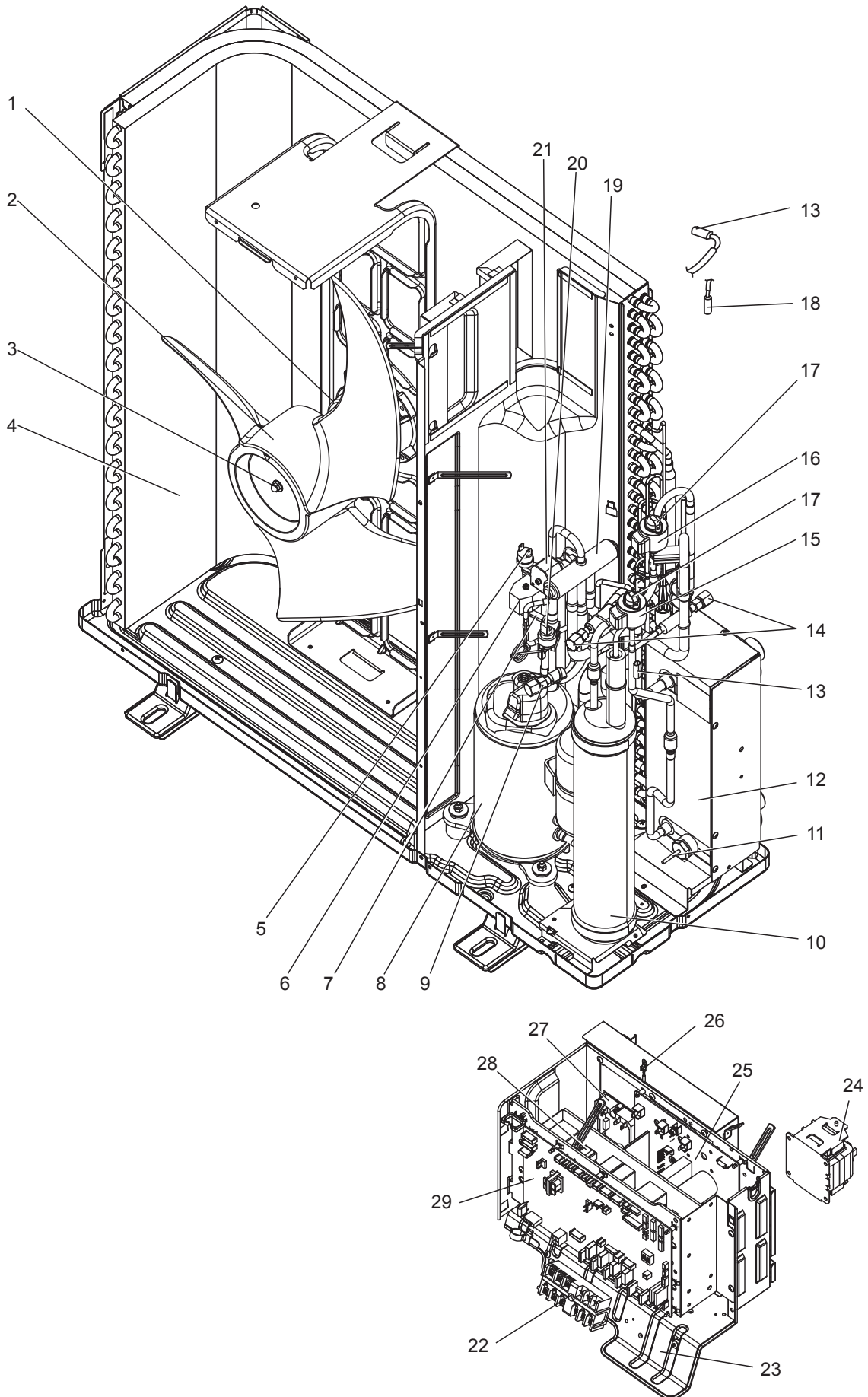




Parts numbers that are circled are not shown in the figure.

No.	Parts No.	Parts Name	Specification	Q'ty/unit		Remarks (Drawing No.)	Wiring Diagram Symbol
				PUHZ-W50VHAR3	PUHZ-W50VHAR3-BS		
1	R01 E70 221	FAN MOTOR		1	1		MF1
2	R01 E12 115	PROPELLER FAN		1	1		
3	R01 E09 097	NUT M6		1	1		
4	T7W E66 408	HEAT EXCHANGER		1	1		
5	R01 E26 201	THERMISTOR (DIS)	Discharge	1	1		TH4
6	R01 E06 208	HIGH PRESSURE SWITCH		1	1		63H
7	T7W E52 242	SOLENOID COIL (SV)		1	1		SV
8	R01 E15 428	SOLENOID VALVE		1	1		
9	T92 286 607	COMPRESSOR	SNB130FGCM	1	1	Includes RUBBER MOUNTS	MC
10	R01 E24 413	CHARGE PLUG / LB90		1	1		
11	T7W E24 440	RECEIVER		1	1		
12	R01 H91 202	THERMISTOR (PLATE.HEX)	Inlet Water	1	1		TH32
13	T7W E68 408	PLATE HEAT EXCHANGER	MWA1-28LM	1	1		
14	R01 H99 202	THERMISTOR W	Plate Hex Liquid, Ambient	1	1		TH6/TH7
15	R01 E18 413	CHARGE PLUG /ST		2	2		
16	R01 E49 242	COIL (LEV) /XAP-6P RED	UKV type	1	1		LEV-B
17	R01 E91 242	COIL (LEV) /XAP-6P WH	UKV type	1	1		LEV-A
18	T7W E64 401	LEV ASSY-B /PH-R		1	1	Includes COIL & STRAINER	
19	T7W E63 401	LEV ASSY-A /C-R		1	1	Includes COIL & STRAINER	
20	T7W E73 202	THERMISTOR	Liquid	1	1		TH3
21	R01 E29 403	4 WAY VALVE		1	1		21S4
22	R01 E07 208	HIGH PRESSURE SENSOR		1	1		63HS
23	T7W E39 242	SOLENOID COIL (21S4)		1	1		21S4
24	T7W E61 716	T.B. /LNE.S1.S2.S3	6P (L, N, ⊕, S1, S2, S3)	1	1		TB1
25	—	ELECTRICAL PARTS BOX		1	1	(BK00B055GB8)	
26	R01 E33 259	REACTOR		1	1		ACL
27	T7W E78 313	POWER BOARD		1	1		P.B.
28	R01 E99 202	THERMISTOR (HS)	Heat sink	1	1		TH8
29	T7W E21 346	NOISE FILTER		1	1		N.F.
30	T7W GH0 315	CONTROLLER BOARD		1	1		C.B.
31	T7W A04 602	COMP FELT SET		1	1		
32	R01 A09 371	HEAT SINK		1	1	Includes SCREWS	
33	R01 E08 510	LEAD ASSY COMP		1	1		
34	R01 E06 239	FUSE 6.3A 250V	6.3 A, 250 V	4	4		F1, 2, 3, 4
35	T7W E07 201	SHELL THERMISTOR	Comp. Surface	1	1		TH33

FUNCTIONAL AND ELECTRICAL PARTS
PUHZ-W85VHA PUIHZ-W85VHA-BS
PUHZ-W85VHAR1 PUIHZ-W85VHAR1-BS

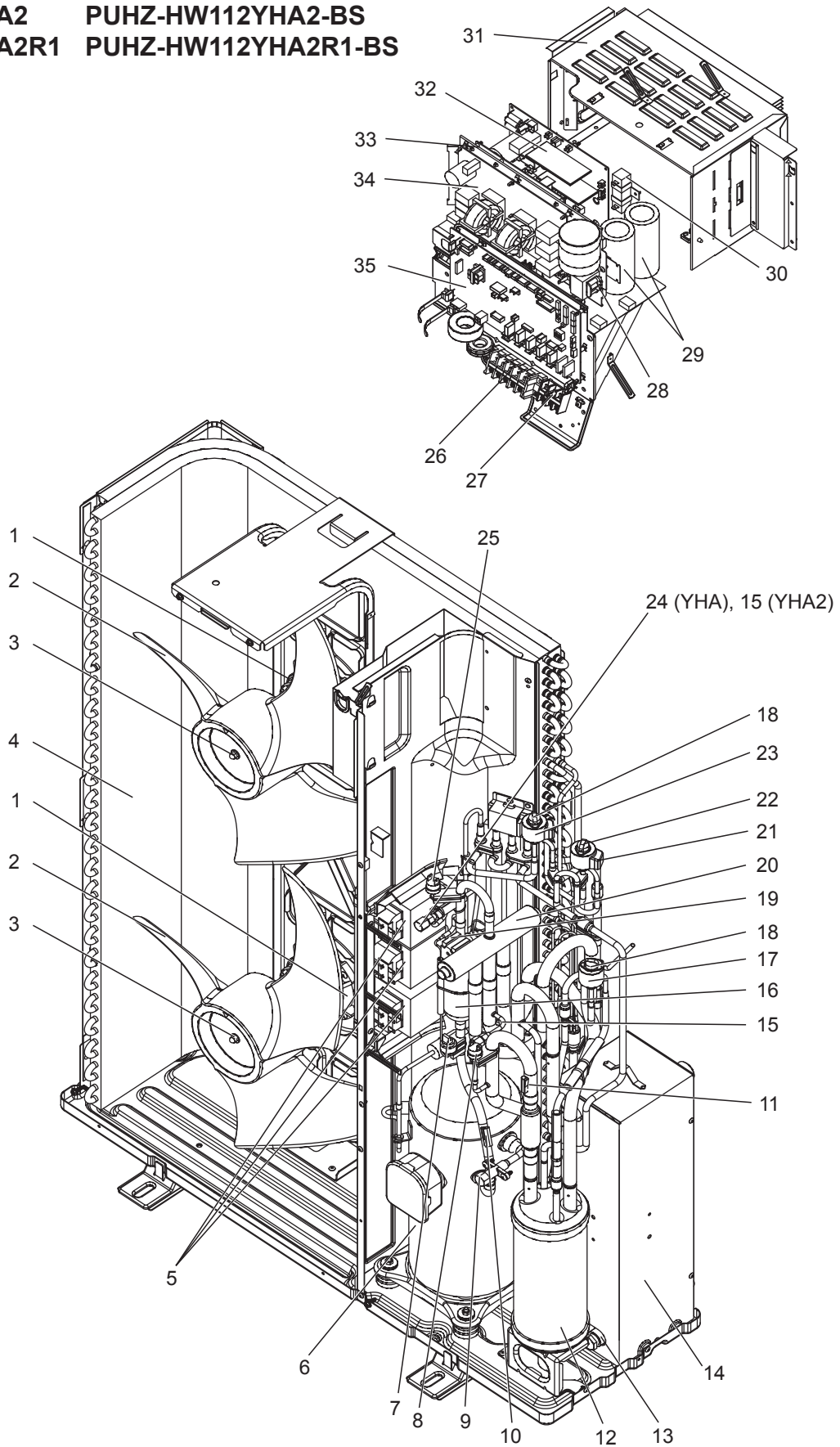


Parts numbers that are circled are not shown in the figure.

No.	Parts No.	Parts Name	Specification	Q'ty/unit				Remarks (Drawing No.)	Wiring Diagram Symbol
				PUHZ-W85VHA	PUHZ-W85VHAR1	PUHZ-W85VHA-BS	PUHZ-W85VHAR1-BS		
1	T7W E31 763	FAN MOTOR		1	1	1	1		MF1
2	R01 E12 115	PROPELLER FAN		1	1	1	1		
3	R01 E09 097	NUT M6		1	1	1	1		
4	T7W E47 408	HEAT EXCHANGER		1	1	1	1		
5	R01 E06 208	HIGH PRESSURE SWITCH		1	1	1	1		63H
6	T7W E37 242	SOLENOID COIL (SV)		1	1	1	1		SV
7	R01 E15 428	SOLENOID VALVE		1	1	1	1		
8	T92 502 801	COMPRESSOR	TNB220FLHM1	1	1	1	1	Includes RUBBER MOUNTS	MC
9	R01 E24 413	CHARGE PLUG/ LB90		1	1	1	1		
10	T7W E23 440	RECEIVER		1	1	1	1		
11	T7W E19 202	THERMISTOR (PLATE.HEX)	Inlet Water	1	1	1	1		TH32
12	T7W E56 408	PLATE HEAT EXCHANGER	ACH30-40	1	1	1	1		
13	R01 E94 202	THERMISTOR	Plate Hex Liquid, Ambient	1	1	1	1		TH6/TH7
14	R01 E18 413	CHARGE PLUG /ST		2	2	2	2		
15	R01 E49 242	COIL (LEV) /XAP-6P RED	UKV type	1	1	1	1		LEV-B
16	R01 E91 242	COIL (LEV) /XAP-6P WH	UKV type	1	1	1	1		LEV-A
17	R01 H22 401	LEV		2	2	2	2		
18	R01 N03 202	THERMISTOR	Liquid	1	1	1	1		TH3
19	R01 E13 403	4 WAY VALVE		1	1	1	1		21S4
20	R01 E07 208	HIGH PRESSURE SENSOR		1	1	1	1		63HS
21	T7W E29 242	SOLENOID COIL (21S4)		1	1	1	1		21S4
22	T7W E61 716	T.B. /LNE.S1.S2.S3	6P (L, N, ⊕, S1, S2, S3)	1	1	1	1		TB1
23	—	ELECTRICAL PARTS BOX		1	1	1	1	(BK00B055G91)	
24	T7W E17 259	REACTOR		1	1	1	1		DCL
25	T7W E49 313	POWER BOARD		1	1	1	1		P.B.
26	R01 E99 202	THERMISTOR (HS)	Heat Sink	1	1	1	1		TH8
27	T7W E03 233	ACT MODULE		1	1	1	1		ACTM
28	R01 E22 346	NOISE FILTER		1	1	1	1		N.F.
29	T7W F13 315	CONTROLLER BOARD		1	1	1	1		C.B.
30	R01 E09 201	THERMISTOR (DIS)	Discharge	1		1			TH4
	T7W E08 201	THERMISTOR	Discharge		1		1		TH4
31	—	HEAT SINK		1	1	1	1	(BK11B272H04)	
32	R01 E06 239	FUSE 6.3A 250V	6.3 A, 250 V	4	4	4	4		F1, 2, 3, 4
33	T7W E09 201	SHELL THERMISTOR			1		1		TH33

FUNCTIONAL AND ELECTRICAL PARTS

PUHZ-HW112YHA PUIZ-HW112YHA-BS
PUHZ-HW112YHA2 PUIZ-HW112YHA2-BS
PUHZ-HW112YHA2R1 PUIZ-HW112YHA2R1-BS

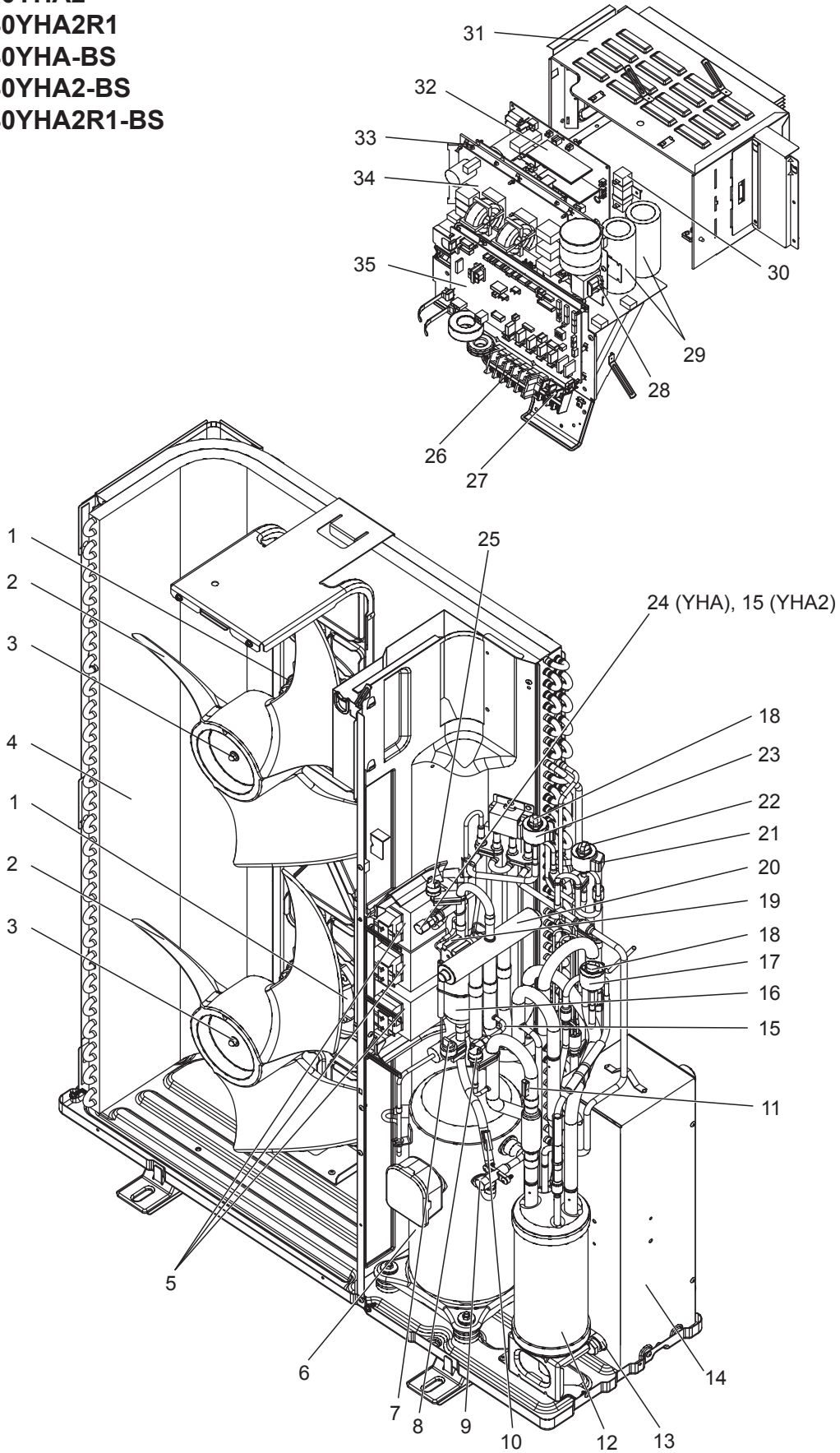


Parts numbers that are circled are not shown in the figure.

No.	Parts No.	Parts Name	Specification	Q'ty/unit						Remarks (Drawing No.)	Wiring Diagram Symbol
				PUHZ-HW112YHA	PUHZ-HW112YHA2	PUHZ-HW112YHA2R1	PUHZ-HW112YHA-BS	PUHZ-HW112YHA2-BS	PUHZ-HW112YHA2R1-BS		
1	R01 E50 221	FAN MOTOR		2	2	2	2	2	2		MF1,2
2	R01 E12 115	PROPELLER FAN		2	2	2	2	2	2		
3	R01 E09 097	NUT M6		2	2	2	2	2	2		
4	R01 H13 408	HEAT EXCHANGER		1			1				
	T7W E63 408	HEAT EXCHANGER			1	1		1	1		
5	T7W E12 259	REACTOR		3	3	3	3	3	3		ACL1,2,3
6	T97 415 761	COMPRESSOR	ANB33FJFMT	1	1	1	1	1	1	Includes RUBBER MOUNTS	MC
7	R01 E07 208	HIGH PRESSURE SENSOR		1	1	1	1	1	1		63HS
8	R01 E00 209	LOW PRESSURE SWITCH		1	1	1	1	1	1		63L
9	R01 E10 411	STOP VALVE 1/4F	1/4F	1	1	1	1	1	1		
10	R01 H79 202	THERMISTOR	Discharge	1			1				TH4
	R01 E22 201	THERMISTOR (DIS)	Discharge		1	1		1	1		TH4
11	R01 H79 202	THERMISTOR	Suction	1	1	1	1	1	1		TH33
12	R01 E61 440	POWER RECEIVER		1	1	1	1	1	1		
13	R01 H78 202	THERMISTOR (PLATE.HEX)	Inlet Water	1	1		1	1			TH32
	R01 H85 202	THERMISTOR (PLATE.HEX)	Inlet Water			1			1		TH32
14	R01 H24 408	PLATE HEAT EXCHANGER	MWA2-46LM	1	1	1	1	1	1		
15	R01 E24 413	CHARGE PLUG / LB90		1	2	2	1	2	2		
16	R01 E10 467	MUFFLER		1			1				
17	R01 E49 242	COIL (LEV) /XAP-6P RED	UKV type	1	1	1	1	1	1		LEV-B
18	R01 H20 401	LEV		2			2			Coil LEV-A,B	
	T7W E27 401	LEV			2	2		2	2		
19	T7W E29 242	SOLENOID COIL (21S4)		1	1	1	1	1	1		21S4
20	R01 E15 403	4 WAY VALVE		1	1	1	1	1	1		21S4
21	R01 E68 242	COIL (LEV) /XAP-6P BLU	UKV type	1	1	1	1	1	1		LEV-C
22	R01 H22 401	LEV		1	1	1	1	1	1	Coil LEV-C	
23	R01 E50 242	COIL (LEV) /XAP-6P WH	UKV type	1	1	1	1	1	1		LEV-A
24	R01 E18 413	CHARGE PLUG /ST		1			1				
25	R01 E06 208	HIGH PRESSURE SWITCH		1	1	1	1	1	1		63H
26	T7W E30 716	T.B. /L1.L2.L3.N.E	5P (L1,L2,L3,N,⊕)	1	1	1	1	1	1		TB1
27	R01 E18 246	T.B. /S1.S2.S3	3P (S1,S2,S3)	1	1	1	1	1	1		TB2
28	R01 E31 259	REACTOR		1	1	1	1	1	1		ACL4
29	R01 E02 254	CAPACITOR		2	2	2	2	2	2		CB1,2
30	R01 E10 233	RESISTOR		1	1	1	1	1	1		RS
31	—	ELECTRICAL PARTS BOX		1	1	1	1	1	1	(BK00C410G16)	
32	T7W E84 313	POWER BOARD		1	1	1	1	1	1		P.B.
33	T7W E75 310	CONVERTER BOARD		1	1	1	1	1	1		CONV.B
34	T7W E23 346	NOISE FILTER		1	1	1	1	1	1		N.F
35	T7W E88 315	CONTROLLER BOARD		1	1		1	1			C.B
	R01 F44 310	CONTROLLER BOARD				1			1		C.B
36	R01 H00 202	THERMISTOR	Liquid	1	1	1	1	1	1		TH3
37	R01 H99 202	THERMISTOR W	Plate Hex Liquid, Ambient	1	1	1	1	1	1		TH6/7
38	T7W E10 254	CAPACITOR		1			1				CK
	T7W E11 254	CAPACITOR			1	1		1	1		CK
39	R01 E06 239	FUSE 6.3A 250V	6.3 A, 250 V	4			4				F1,2,3,4
	R01 E14 239	FUSE 6.3A 250V	6.3 A, 250 V		4	4		4	4		F1,2,3,4

FUNCTIONAL AND ELECTRICAL PARTS

PUHZ-HW140YHA
 PUHZ-HW140YHA2
 PUHZ-HW140YHA2R1
 PUHZ-HW140YHA-BS
 PUHZ-HW140YHA2-BS
 PUHZ-HW140YHA2R1-BS



Parts numbers that are circled are not shown in the figure.

No.	Parts No.	Parts Name	Specification	Q'ty/unit						Remarks (Drawing No.)	Wiring Diagram Symbol
				PUHZ-HW140YHA	PUHZ-HW140YHA2	PUHZ-HW140YHA2R1	PUHZ-HW140YHA-BS	PUHZ-HW140YHA2-BS	PUHZ-HW140YHA2R1-BS		
1	R01 E50 221	FAN MOTOR		2	2	2	2	2	2		MF1,2
2	R01 E12 115	PROPELLER FAN		2	2	2	2	2	2		
3	R01 E09 097	NUT M6		2	2	2	2	2	2		
4	R01 H13 408	HEAT EXCHANGER		1			1				
	T7W E63 408	HEAT EXCHANGER			1	1		1	1		
5	T7W E12 259	REACTOR		3	3	3	3	3	3		ACL1,2,3
6	T97 415 761	COMPRESSOR	ANB33FJFMT	1			1			Includes RUBBER MOUNTS	MC
	T97 415 781	COMPRESSOR	ANB42FJFMT		1	1		1	1		MC
7	R01 E07 208	HIGH PRESSURE SENSOR		1	1	1	1	1	1		63HS
8	R01 E00 209	LOW PRESSURE SWITCH		1	1	1	1	1	1		63L
9	R01 E10 411	STOP VALVE 1/4F	1/4F	1	1	1	1	1	1		
10	T7W E04 201	THERMISTOR (DIS)	Discharge	1			1				TH4
	R01 E22 201	THERMISTOR (DIS)	Discharge		1	1		1	1		TH4
11	R01 H79 202	THERMISTOR	Suction	1	1	1	1	1	1		TH33
12	R01 E61 440	POWER RECEIVER		1	1	1	1	1	1		
13	R01 H78 202	THERMISTOR (PLATE.HEX)	Inlet Water	1	1		1	1			TH32
	R01 H85 202	THERMISTOR (PLATE.HEX)	Inlet Water			1			1		TH32
14	R01 H24 408	PLATE HEAT EXCHANGER	MWA2-46LM	1	1	1	1	1	1		
15	R01 E24 413	CHARGE PLUG /LB90		1	2	2	1	2	2		
16	R01 E10 467	MUFFLER		1			1				
17	R01 E49 242	COIL (LEV) /XAP-6P RED	UKV type	1	1	1	1	1	1		LEV-B
18	R01 H20 401	LEV		2			2			Coil LEV-A,B	
	T7W E27 401	LEV			2	2		2	2		
19	T7W E29 242	SOLENOID COIL (21S4)		1	1	1	1	1	1		21S4
20	R01 E15 403	4 WAY VALVE		1	1	1	1	1	1		21S4
21	R01 E68 242	COIL (LEV) /XAP-6P BLU	UKV type	1	1	1	1	1	1		LEV-C
22	R01 H22 401	LEV		1	1	1	1	1	1	Coil LEV-C	
23	R01 E50 242	COIL (LEV) /XAP-6P WH	UKV type	1	1	1	1	1	1		LEV-A
24	R01 E18 413	CHARGE PLUG /ST		1			1				
25	R01 E06 208	HIGH PRESSURE SWITCH		1	1	1	1	1	1		63H
26	T7W E30 716	T.B. /L1.L2.L3.N.E	5P (L1,L2,L3,N,⊙)	1	1	1	1	1	1		TB1
27	R01 E18 246	T.B. /S1.S2.S3	3P (S1,S2,S3)	1	1	1	1	1	1		TB2
28	R01 E31 259	REACTOR		1	1	1	1	1	1		ACL4
29	R01 E02 254	CAPACITOR		2	2	2	2	2	2		CB1,2
30	R01 E10 233	RESISTOR		1	1	1	1	1	1		RS
31	—	ELECTRICAL PARTS BOX		1	1	1	1	1	1	(BK00C410G16)	
32	T7W E84 313	POWER BOARD		1	1	1	1	1	1		P.B.
33	T7W E75 310	CONVERTER BOARD		1	1	1	1	1	1		CONV.B
34	T7W E23 346	NOISE FILTER		1	1	1	1	1	1		N.F
35	T7W E88 315	CONTROLLER BOARD		1	1		1	1			C.B
	R01 F44 310	CONTROLLER BOARD				1			1		C.B
36	R01 H00 202	THERMISTOR	Liquid	1	1	1	1	1	1		TH3
37	R01 H99 202	THERMISTOR W	Plate Hex Liquid, Ambient	1	1	1	1	1	1		TH6/7
38	T7W E10 254	CAPACITOR		1			1				CK
	T7W E11 254	CAPACITOR			1	1		1	1		CK
39	R01 E06 239	FUSE 6.3A 250V	6.3 A, 250 V	4			4				F1,2,3,4
	R01 E14 239	FUSE 6.3A 250V	6.3 A, 250 V		4	4		4	4		F1,2,3,4

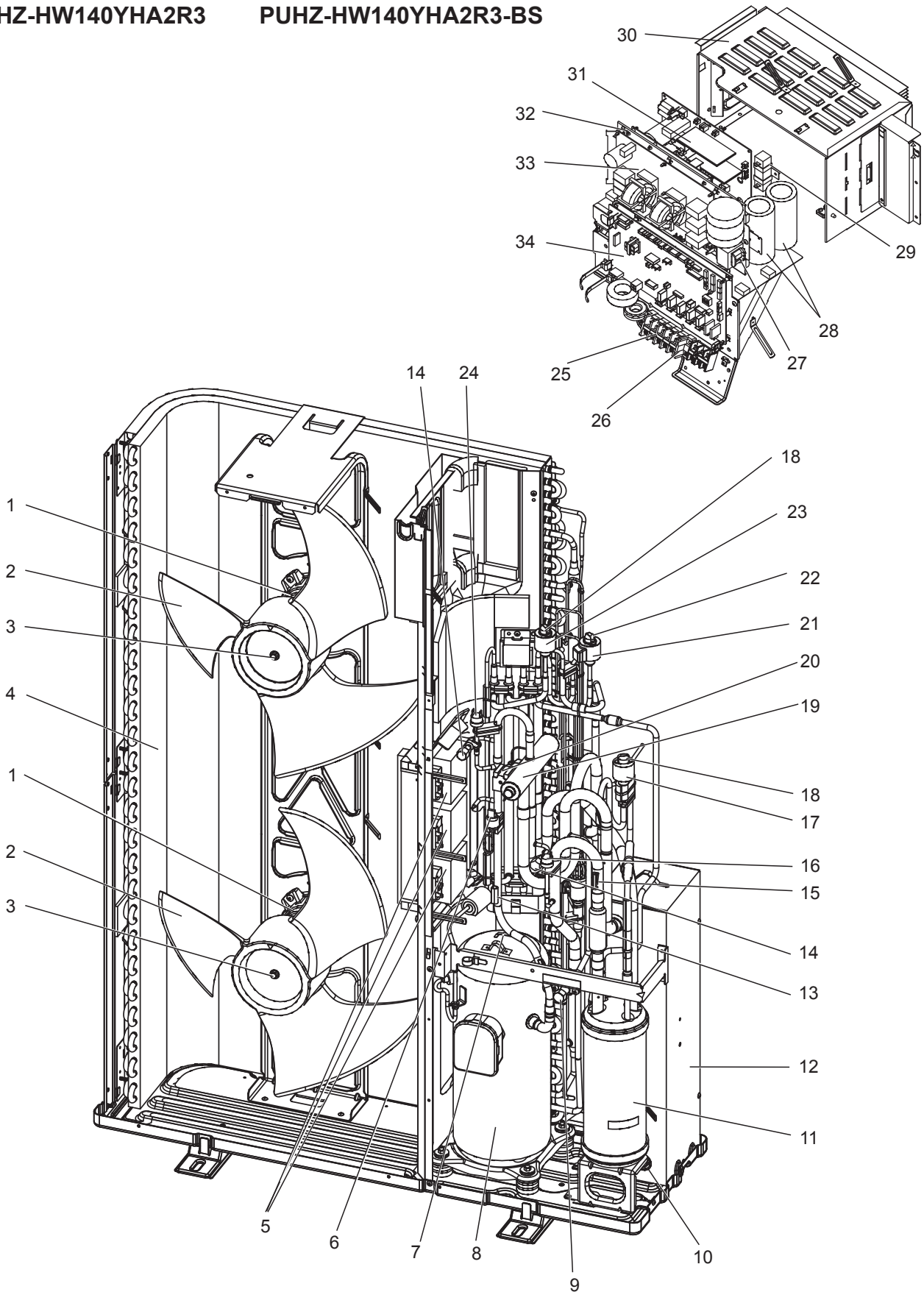
FUNCTIONAL AND ELECTRICAL PARTS

PUHZ-HW112YHA2R3

PUHZ-HW112YHA2R3-BS

PUHZ-HW140YHA2R3

PUHZ-HW140YHA2R3-BS



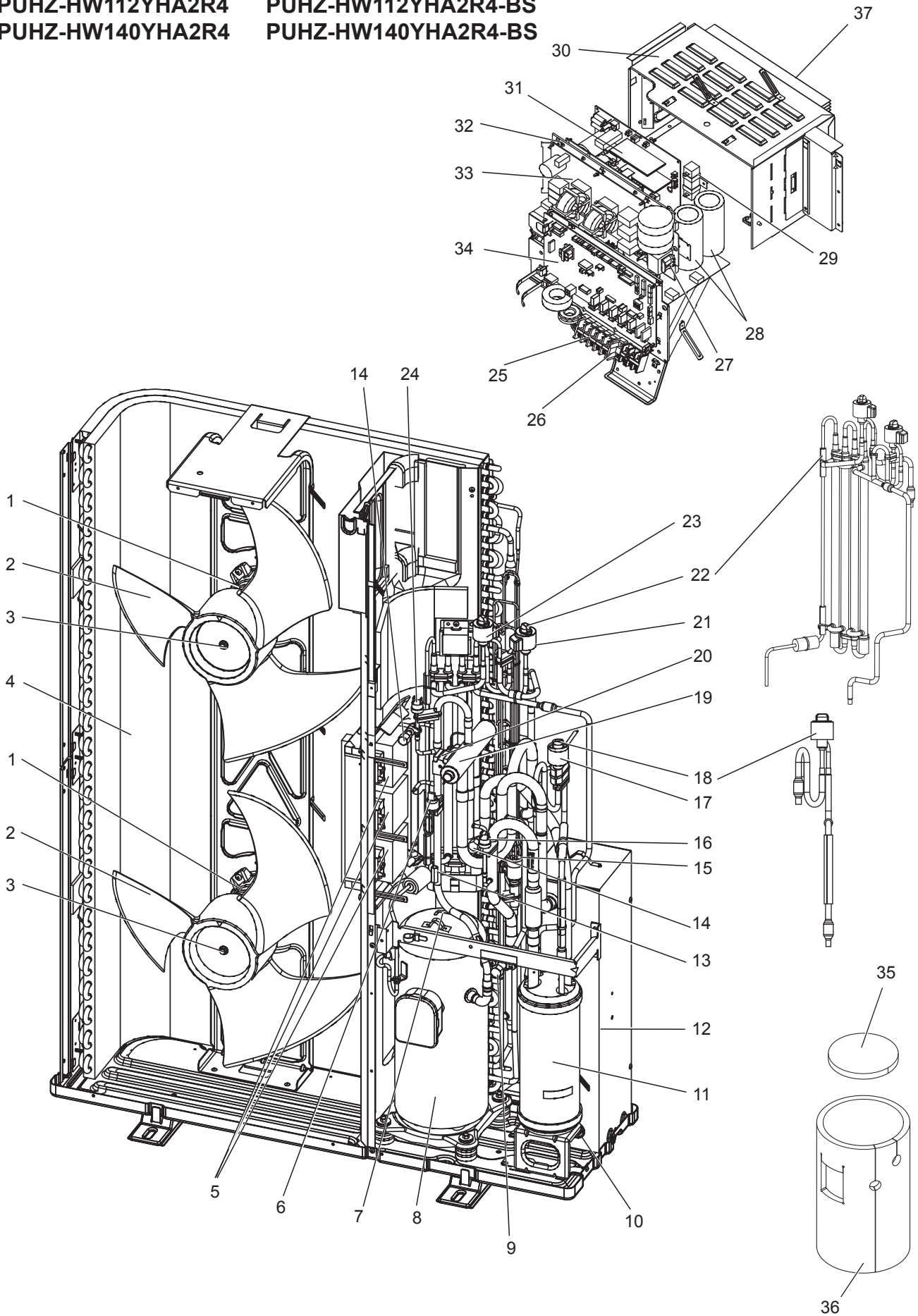
Parts numbers that are circled are not shown in the figure.

No.	Parts No.	Parts Name	Specification	Q'ty/unit				Remarks (Drawing No.)	Wiring Diagram Symbol
				PUHZ-HW112YHA2R3	PUHZ-HW140YHA2R3	PUHZ-HW112YHA2R3-BS	PUHZ-HW140YHA2R3-BS		
1	R01 E50 221	FAN MOTOR		2	2	2	2		MF1,2
2	R01 E12 115	PROPELLER FAN		2	2	2	2		
3	R01 E09 097	NUT M6		2	2	2	2		
4	T7W E67 408	HEAT EXCHANGER		1	1	1	1		
5	T7W E12 259	REACTOR		3	3	3	3		ACL1,2,3
6	R01 E07 208	HIGH PRESSURE SENSOR		1	1	1	1		63HS
7	R01 H90 202	THERMISTOR	Comp. Surface	1	1	1	1		TH34
8	T97 419 077	COMPRESSOR	ANB33FJJMT	1		1		Includes RUBBER MOUNTS	MC
	T97 420 077	COMPRESSOR	ANB42FJJMT		1		1	Includes RUBBER MOUNTS	MC
9	R01 E10 411	STOP VALVE 1/4F	1/4F	1	1	1	1		
10	R01 H85 202	THERMISTOR (PLATE.HEX)	Inlet Water	1	1	1	1		TH32
11	R01 E61 440	POWER RECEIVER		1	1	1	1		
12	R01 H24 408	PLATE HEAT EXCHANGER	MWA2-46LM	1	1	1	1		
13	R01 E22 201	THERMISTOR (DIS)	Discharge	1	1	1	1		TH4
14	R01 E24 413	CHARGE PLUG/ LB90		2	2	2	2		
15	R01 H79 202	THERMISTOR	Suction	1	1	1	1		TH33
16	R01 E00 209	LOW PRESSURE SWITCH		1	1	1	1		63L
17	R01 H08 242	COIL (LEV) /XAP-5P RED	UKV type	1	1	1	1		LEV-B
18	T7W E27 401	LEV		2	2	2	2	Coil LEV-A,B	
19	R01 E15 403	4 WAY VALVE		1	1	1	1		21S4
20	T7W E39 242	SOLENOID COIL (21S4)		1	1	1	1		21S4
21	R01 H10 242	COIL (LEV) /XAP-5P BLU	UKV type	1	1	1	1		LEV-C
22	R01 H22 401	LEV		1	1	1	1	Coil LEV-C	
23	R01 H09 242	COIL (LEV)/ XAP-5P WH	UKV type	1	1	1	1		LEV-A
24	R01 E06 208	HIGH PRESSURE SWITCH		1	1	1	1		63H
25	T7W E30 716	T.B. /L1.L2.L3.N.E	5P (L1,L2,L3,N,⊙)	1	1	1	1		TB1
26	R01 E18 246	T.B. /S1.S2.S3	3P (S1,S2,S3)	1	1	1	1		TB2
27	R01 E31 259	REACTOR		1	1	1	1		ACL4
28	R01 E02 254	CAPACITOR		2	2	2	2		CB1,2
29	R01 E10 233	RESISTOR		1	1	1	1		RS
30	—	ELECTRICAL PARTS BOX		1	1	1	1	(BK00C410G16)	
31	T7W E84 313	POWER BOARD		1	1	1	1		P.B.
32	T7W E75 310	CONVERTER BOARD		1	1	1	1		CONV.B
33	T7W E28 346	NOISE FILTER		1	1	1	1		N.F
34	T7W F16 315	CONTROLLER BOARD		1	1	1	1		C.B
③5	R01 H00 202	THERMISTOR	Liquid	1	1	1	1		TH3
③6	R01 H99 202	THERMISTOR W	Plate Hex Liquid, Ambient	1	1	1	1		TH6/7
③7	T7W E11 254	CAPACITOR		1	1	1	1		CK
③8	R01 E14 239	FUSE 6.3A 250V	6.3 A, 250 V	4	4	4	4		F1,2,3,4

FUNCTIONAL AND ELECTRICAL PARTS

PUHZ-HW112YHA2R4 PUAZ-HW112YHA2R4-BS

PUHZ-HW140YHA2R4 PUAZ-HW140YHA2R4-BS

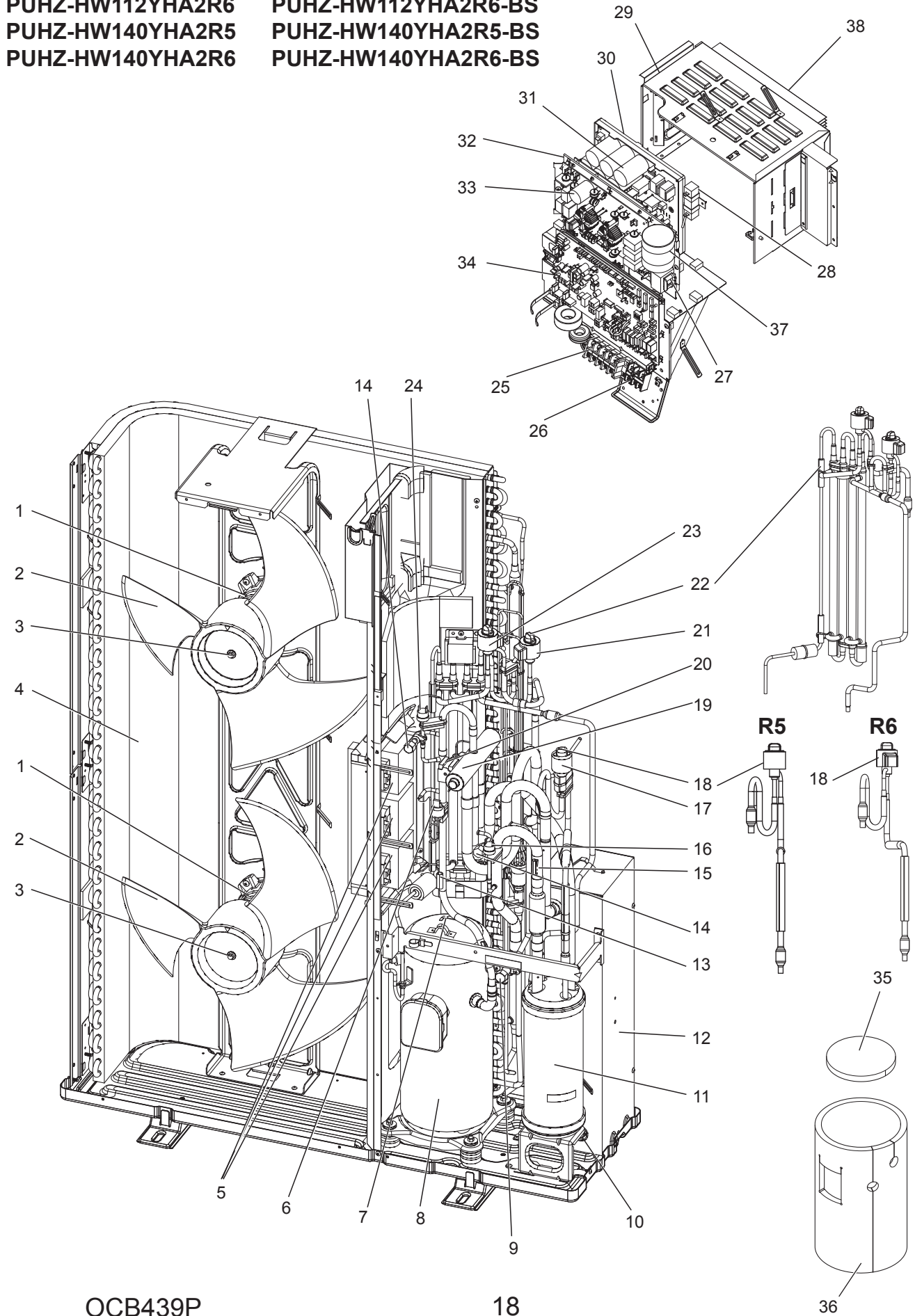


Parts numbers that are circled are not shown in the figure.

No.	Parts No.	Parts Name	Specification	Q'ty/unit				Remarks (Drawing No.)	Wiring Diagram Symbol
				PUHZ-HW112YHA2R4	PUHZ-HW140YHA2R4	PUHZ-HW112YHA2R4-BS	PUHZ-HW140YHA2R4-BS		
1	R01 E50 221	FAN MOTOR		2	2	2	2		MF1,2
2	R01 E12 115	PROPELLER FAN		2	2	2	2		
3	R01 E09 097	NUT M6		2	2	2	2		
4	T7W E67 408	HEAT EXCHANGER		1	1	1	1		
5	T7W E12 259	REACTOR		3	3	3	3		ACL1,2,3
6	R01 E07 208	HIGH PRESSURE SENSOR		1	1	1	1		63HS
7	R01 H90 202	THERMISTOR	Comp. Surface	1	1	1	1		TH34
8	T97 419 077	COMPRESSOR	ANB33FJJMT	1		1		Includes RUBBER MOUNTS	MC
	T97 420 077	COMPRESSOR	ANB42FJJMT		1		1	Includes RUBBER MOUNTS	MC
9	R01 E10 411	STOP VALVE 1/4F	1/4F	1	1	1	1		
10	R01 H85 202	THERMISTOR (PLATE.HEX)	Inlet Water	1	1	1	1		TH32
11	R01 E61 440	POWER RECEIVER		1	1	1	1		
12	R01 H24 408	PLATE HEAT EXCHANGER	MWA2-46LM	1	1	1	1		
13	R01 E22 201	THERMISTOR (DIS)	Discharge	1	1	1	1		TH4
14	R01 E24 413	CHARGE PLUG /LB90		2	2	2	2		
15	R01 H79 202	THERMISTOR	Suction	1	1	1	1		TH33
16	R01 E00 209	LOW PRESSURE SWITCH		1	1	1	1		63L
17	R01 H08 242	COIL (LEV) /XAP-5P RED	UKV type	1	1	1	1		LEV-B
18	T7W E35 401	LEV ASSY-B /REC-P.HEX		1	1	1	1	Includes LEV-B coil	
19	R01 E15 403	4 WAY VALVE		1	1	1	1		21S4
20	T7W E39 242	SOLENOID COIL (21S4)		1	1	1	1		21S4
21	R01 H10 242	COIL (LEV) /XAP-5P BLU	UKV type	1	1	1	1		LEV-C
22	T7W E36 401	LEV ASSY HIC		1	1	1	1	Includes LEV- A, C coil	
23	R01 H09 242	COIL (LEV)/ XAP-5P WH	UKV type	1	1	1	1		LEV-A
24	R01 E06 208	HIGH PRESSURE SWITCH		1	1	1	1		63H
25	T7W E30 716	T.B. /L1.L2.L3.N.E	5P (L1,L2,L3,N,⊕)	1	1	1	1		TB1
26	R01 E18 246	T.B. /S1.S2.S3	3P (S1,S2,S3)	1	1	1	1		TB2
27	R01 E31 259	REACTOR		1	1	1	1		ACL4
28	R01 E02 254	CAPACITOR		2	2	2	2		CB1,2
29	R01 E10 233	RESISTOR		1	1	1	1		RS
30	—	ELECTRICAL PARTS BOX		1	1	1	1	(BK00C410G16)	
31	T7W E84 313	POWER BOARD		1	1	1	1		P.B.
32	T7W E75 310	CONVERTER BOARD		1	1	1	1		CONV.B
33	T7W E28 346	NOISE FILTER		1	1	1	1		N.F
34	T7W GK0 315	CONTROLLER BOARD		1	1	1	1		C.B
35	R01 A57 602	COMP FELT (TOP)		1	1	1	1		
36	R01 A70 602	COMP FELT (BODY)		1	1	1	1		
37	R01 A08 371	HEAT SINK		1	1	1	1	Includes SCREWS	
③⑧	R01 E16 510	LEAD ASSY COMP		1	1	1	1		
③⑨	R01 H00 202	THERMISTOR	Liquid	1	1	1	1		TH3
④⑩	R01 H99 202	THERMISTOR W	Plate Hex Liquid, Ambient	1	1	1	1		TH6,7
④①	T7W E11 254	CAPACITOR		1	1	1	1		CK
④②	R01 E14 239	FUSE 6.3A 250V	6.3 A, 250 V	4	4	4	4		F1,2,3,4

FUNCTIONAL AND ELECTRICAL PARTS

- | | |
|------------------|---------------------|
| PUHZ-HW112YHA2R5 | PUHZ-HW112YHA2R5-BS |
| PUHZ-HW112YHA2R6 | PUHZ-HW112YHA2R6-BS |
| PUHZ-HW140YHA2R5 | PUHZ-HW140YHA2R5-BS |
| PUHZ-HW140YHA2R6 | PUHZ-HW140YHA2R6-BS |



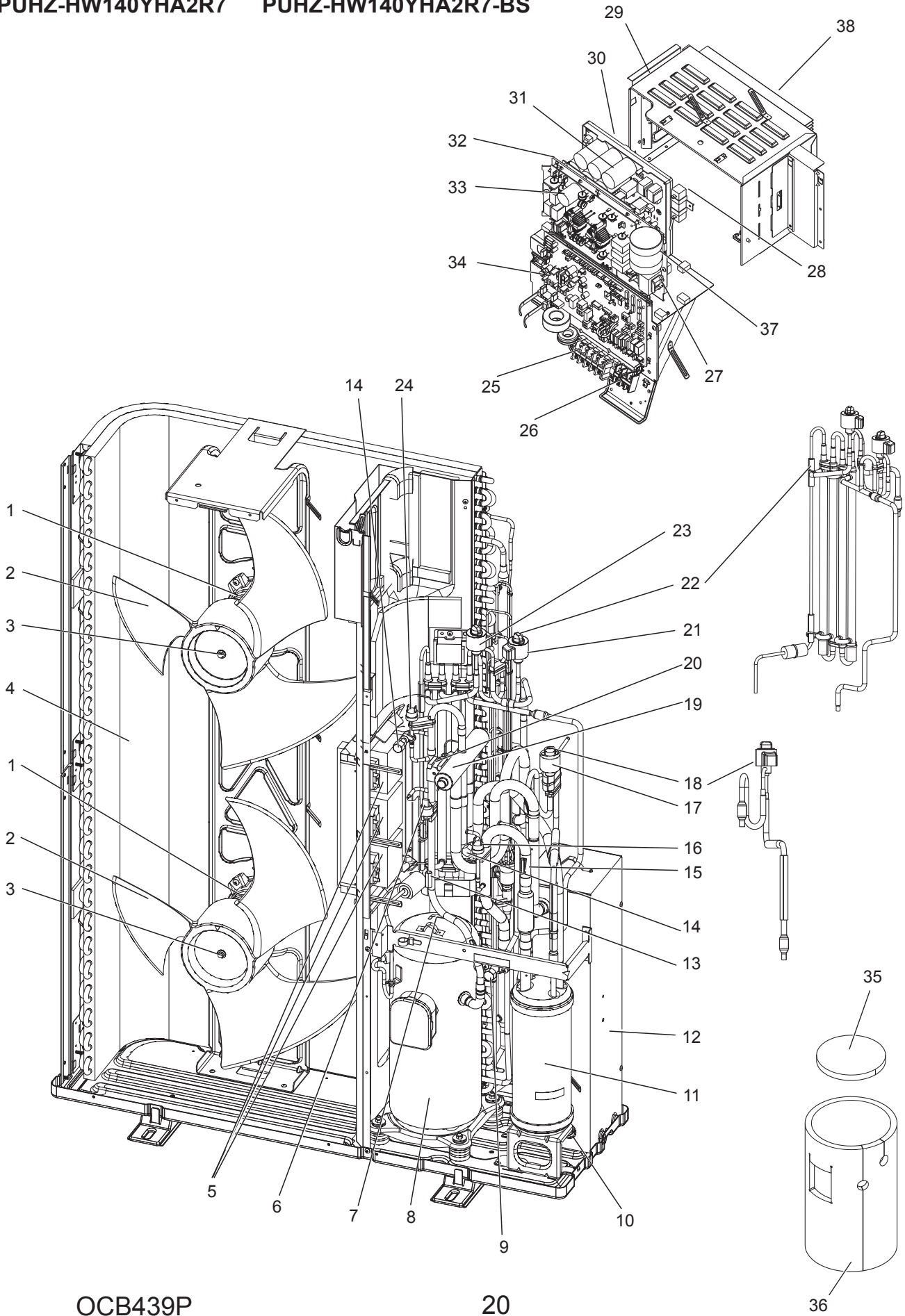
Parts numbers that are circled are not shown in the figure.

No.	Parts No.	Parts Name	Specification	Q'ty/unit							Remarks (Drawing No.)	Wiring Diagram Symbol
				PUHZ-HW112YHA2R5	PUHZ-HW112YHA2R6	PUHZ-HW140YHA2R5	PUHZ-HW140YHA2R6	PUHZ-HW112YHA2R5-BS	PUHZ-HW112YHA2R6-BS	PUHZ-HW140YHA2R5-BS		
1	R01 E88 221	FAN MOTOR		2	2	2	2	2	2	2		MF1,2
2	R01 E12 115	PROPELLER FAN		2	2	2	2	2	2	2		
3	R01 E09 097	NUT M6		2		2		2		2		
	R01 E16 097	CAP NUT (MEC) M6			2		2		2			
4	T7W H67 408	HEAT EXCHANGER		1	1	1	1	1	1	1		
5	T7W E12 259	REACTOR		3	3	3	3	3	3	3		ACL1,2,3
6	R01 H07 208	HIGH PRESSURE SENSOR		1	1	1	1	1	1	1		63HS
7	R01 H90 202	THERMISTOR	Comp. Surface	1	1	1	1	1	1	1		TH34
8	T97 473 077	COMPRESSOR	ANB33FJJMT	1	1			1	1		Includes RUBBER MOUNTS	MC
	T97 474 077	COMPRESSOR	ANB42FJJMT			1	1			1	Includes RUBBER MOUNTS	MC
9	R01 E10 411	STOP VALVE 1/4F	1/4F	1	1	1	1	1	1	1		
10	R01 H85 202	THERMISTOR(PLATE.HEX)	Inlet Water	1	1	1	1	1	1	1	R1/4	TH32
11	R01 H61 440	POWER RECEIVER		1	1	1	1	1	1	1		
12	R01 R24 408	PLATE HEAT EXCHANGER	MWA2-46LM	1	1	1	1	1	1	1	R1/4	
13	R01 E22 201	THERMISTOR (DIS)	Discharge	1	1	1	1	1	1	1		TH4
14	R01 E24 413	CHARGE PLUG /LB90		2	2	2	2	2	2	2		
15	R01 H79 202	THERMISTOR	Suction	1	1	1	1	1	1	1		TH33
16	R01 H00 209	LOW PRESSURE SWITCH		1	1	1	1	1	1	1		63L
17	R01 HR8 242	COIL (LEV) /XAP-5P RED	UKV type	1	1	1	1	1	1	1		LEV-B
18	T7W E35 401	LEV ASSY-B /REC-P.HEX		1		1		1		1	Includes LEV-B coil	
	T7W H02 401	LEV ASSY-B /REC-P.HEX			1		1		1		Includes LEV-B coil	
19	R01 E15 403	4 WAY VALVE		1	1	1	1	1	1	1		21S4
20	T7W E29 242	SOLENOID COIL (21S4)		1	1	1	1	1	1	1		21S4
21	R01 HR0 242	COIL (LEV) /XAP-5P BLU	UKV type	1	1	1	1	1	1	1		LEV-C
22	T7W H36 401	LEV ASSY HIC		1	1	1	1	1	1	1	Includes LEV- A, C coil	
23	R01 HR9 242	COIL (LEV)/ XAP-5P WH	UKV type	1	1	1	1	1	1	1		LEV-A
24	R01 H06 208	HIGH PRESSURE SWITCH		1	1	1	1	1	1	1		63H
25	T7W E30 716	T.B. /L1.L2.L3.N.E	5P (L1,L2,L3,N,⊕)	1	1	1	1	1	1	1		TB1
26	R01 E19 246	T.B. /S1.S2.S3	3P (S1,S2,S3)	1	1	1	1	1	1	1		TB2
27	R01 E31 259	REACTOR		1	1	1	1	1	1	1		ACL4
28	R01 E10 233	RESISTOR		1	1	1	1	1	1	1		RS
29	—	ELECTRICAL PARTS BOX		1	1	1	1	1	1	1	(BK00C410G35)	
30	—	BOARD CASE POWER		1	1	1	1	1	1	1	(BK25J690G02)	
31	T7W AT0 323	POWER BOARD		1	1	1	1	1	1	1		P.B.
32	T7W F13 310	CONVERTER BOARD		1	1	1	1	1	1	1		CONV.B
33	T7W E33 346	NOISE FILTER		1	1	1	1	1	1	1		N.F
34	T7W GW1 315	CONTROLLER BOARD		1		1		1		1		C.B
	T7W GW2 315	CONTROLLER BOARD			1		1		1			C.B
35	R01 A57 602	COMP FELT (TOP)		1	1	1	1	1	1	1		
36	R01 A70 602	COMP FELT (BODY)		1		1		1		1		
	T7W A17 602	COMP FELT (BODY)			1		1		1			
37	T7W E10 254	CAPACITOR		1	1	1	1	1	1	1		CK
38	R01 A11 371	HEAT SINK		1	1	1	1	1	1	1	Includes SCREWS	
39	T7W H04 510	LEAD ASSY COMP		1	1	1	1	1	1	1		
40	R01 HR4 202	THERMISTOR	Liquid	1	1	1	1	1	1	1		TH3
41	R01 H99 202	THERMISTOR W	Plate Hex Liquid, Ambient	1	1	1	1	1	1	1		TH6,7
42	R01 H93 202	THERMISTOR	Heat Sink	1	1	1	1	1	1	1		TH8
43	R01 E14 239	FUSE 6.3 A 250 V	6.3 A, 250 V	2	2	2	2	2	2	2		F3,4
44	R01 E21 239	FUSE 10 A 250 V	10 A, 250 V	2	2	2	2	2	2	2		F1,2
45	R01 E05 091	THERMISTOR HOLDER			1		1		1			

FUNCTIONAL AND ELECTRICAL PARTS

PUHZ-HW112YHA2R7 PUHZ-HW112YHA2R7-BS

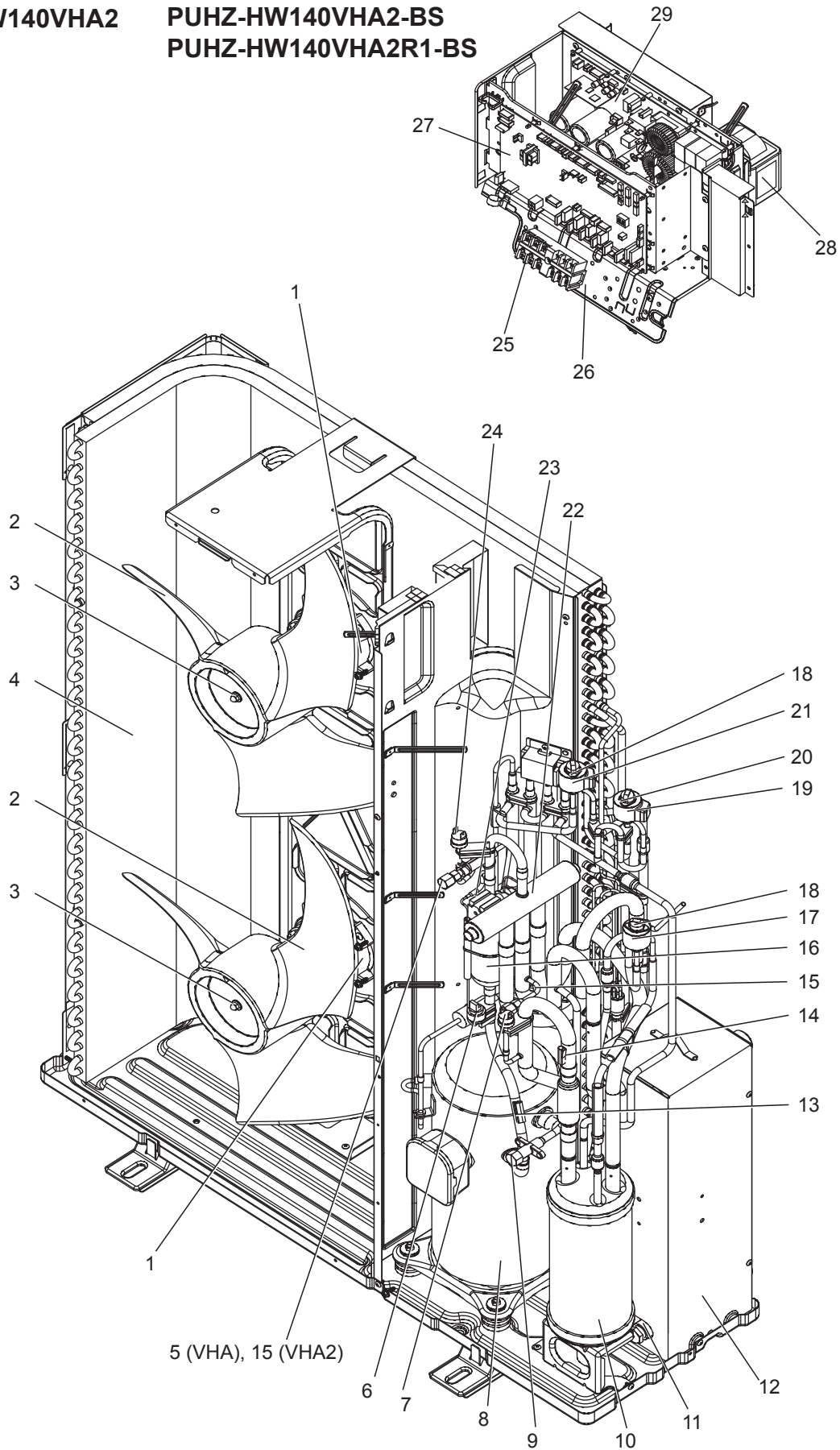
PUHZ-HW140YHA2R7 PUHZ-HW140YHA2R7-BS



Parts numbers that are circled are not shown in the figure.

No.	Parts No.	Parts Name	Specification	Q'ty/unit				Remarks (Drawing No.)	Wiring Diagram Symbol
				PUHZ-HW112YHA2R7	PUHZ-HW140YHA2R7	PUHZ-HW112YHA2R7-BS	PUHZ-HW140YHA2R7-BS		
1	R01 E88 221	FAN MOTOR		2	2	2	2		MF1,2
2	R01 E12 115	PROPELLER FAN		2	2	2	2		
3	R01 E16 097	CAP NUT (MEC) M6		2	2	2	2		
4	T7W H67 408	HEAT EXCHANGER		1	1	1	1		
5	T7W E12 259	REACTOR		3	3	3	3		ACL1,2,3
6	R01 H07 208	HIGH PRESSURE SENSOR		1	1	1	1		63HS
7	R01 H90 202	THERMISTOR	Comp. Surface	1	1	1	1		TH34
8	T97 473 077	COMPRESSOR	ANB33FJJMT	1		1		Includes RUBBER MOUNTS	MC
	T97 474 077	COMPRESSOR	ANB42FJJMT		1		1	Includes RUBBER MOUNTS	MC
9	R01 E10 411	STOP VALVE 1/4F	1/4F	1	1	1	1		
10	R01 H78 202	THERMISTOR(PLATE.HEX)	Inlet Water	1	1	1	1	R1/2, R1/4 SET	TH32
11	R01 H61 440	POWER RECEIVER		1	1	1	1		
12	T7W W01 408	PLATE HEAT EXCHANGER		1	1	1	1	R1/2	
13	R01 E22 201	THERMISTOR (DIS)	Discharge	1	1	1	1		TH4
14	R01 E24 413	CHARGE PLUG /LB90		2	2	2	2		
15	R01 H79 202	THERMISTOR	Suction	1	1	1	1		TH33
16	R01 H00 209	LOW PRESSURE SWITCH		1	1	1	1		63L
17	R01 HR8 242	COIL (LEV) /XAP-5P RED	UKV type	1	1	1	1		LEV-B
18	T7W H02 401	LEV ASSY-B /REC-P.HEX		1	1	1	1	Includes LEV-B coil	
19	R01 E15 403	4 WAY VALVE		1	1	1	1		21S4
20	T7W E29 242	SOLENOID COIL (21S4)		1	1	1	1		21S4
21	R01 HR0 242	COIL (LEV) /XAP-5P BLU	UKV type	1	1	1	1		LEV-C
22	T7W H36 401	LEV ASSY HIC		1	1	1	1	Includes LEV- A, C coil	
23	R01 HR9 242	COIL (LEV)/ XAP-5P WH	UKV type	1	1	1	1		LEV-A
24	R01 H06 208	HIGH PRESSURE SWITCH		1	1	1	1		63H
25	T7W E30 716	T.B. /L1.L2.L3.N.E	5P (L1,L2,L3,N,⊕)	1	1	1	1		TB1
26	R01 E19 246	T.B. /S1.S2.S3	3P (S1,S2,S3)	1	1	1	1		TB2
27	R01 E31 259	REACTOR		1	1	1	1		ACL4
28	R01 E10 233	RESISTOR		1	1	1	1		RS
29	—	ELECTRICAL PARTS BOX		1	1	1	1	(BK00C410G35)	
30	—	BOARD CASE POWER		1	1	1	1	(BK25J690G02)	
31	T7W AT0 323	POWER BOARD		1	1	1	1		P.B.
32	T7W F13 310	CONVERTER BOARD		1	1	1	1		CONV.B
33	T7W E33 346	NOISE FILTER		1	1	1	1		N.F
34	T7W GW2 315	CONTROLLER BOARD		1	1	1	1		C.B
35	R01 A57 602	COMP FELT (TOP)		1	1	1	1		
36	T7W A17 602	COMP FELT (BODY)		1	1	1	1		
37	T7W E10 254	CAPACITOR		1	1	1	1		CK
38	R01 A11 371	HEAT SINK		1	1	1	1	Includes SCREWS	
③⑨	T7W H04 510	LEAD ASSY COMP		1	1	1	1		
④⑩	R01 HR4 202	THERMISTOR	Liquid	1	1	1	1		TH3
④①	R01 H99 202	THERMISTOR W	Plate Hex Liquid, Ambient	1	1	1	1		TH6,7
④②	R01 H93 202	THERMISTOR	Heat Sink	1	1	1	1		TH8
④③	R01 E14 239	FUSE 6.3 A 250 V	6.3 A, 250 V	2	2	2	2		F3,4
④④	R01 E21 239	FUSE 10 A 250 V	10 A, 250 V	2	2	2	2		F1,2
④⑤	R01 E05 091	THERMISTOR HOLDER		1	1	1	1		

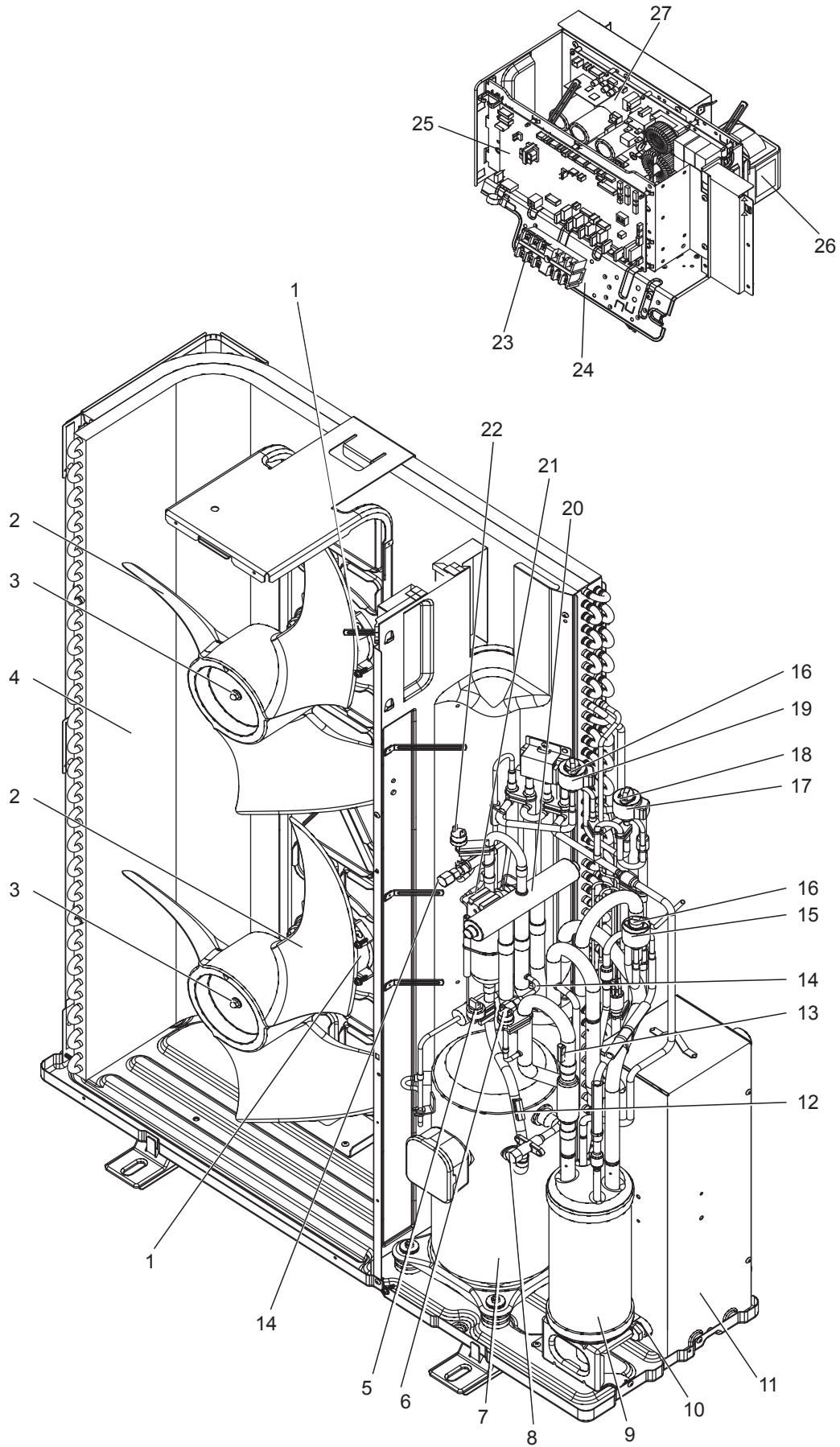
FUNCTIONAL AND ELECTRICAL PARTS
PUHZ-HW140VHA PUIHZ-HW140VHA-BS
PUHZ-HW140VHA2 PUIHZ-HW140VHA2-BS
PUIHZ-HW140VHA2R1-BS



Parts numbers that are circled are not shown in the figure.

No.	Parts No.	Parts Name	Specification	Q'ty/unit					Remarks (Drawing No.)	Wiring Diagram Symbol
				PUHZ-HW140VHA	PUHZ-HW140VHA2	PUHZ-HW140VHA-BS	PUHZ-HW140VHA2-BS	PUHZ-HW140VHA2R1-BS		
1	R01 E50 221	FAN MOTOR		2	2	2	2	2		MF1,2
2	R01 E12 115	PROPELLER FAN		2	2	2	2	2		
3	R01 E09 097	NUT M6		2	2	2	2	2		
4	R01 H13 408	HEAT EXCHANGER		1		1				
	T7W E63 408	HEAT EXCHANGER			1		1	1		
5	R01 E18 413	CHARGE PLUG /ST		1		1				
6	R01 E07 208	HIGH PRESSURE SENSOR		1	1	1	1	1		63HS
7	R01 E00 209	LOW PRESSURE SWITCH		1	1	1	1	1		63L
8	T97 415 762	COMPRESSOR	ANB33FJGMT	1		1			Includes RUBBER MOUNTS	MC
	T97 415 780	COMPRESSOR	ANB42FJGMT		1		1	1		MC
9	R01 E10 411	STOP VALVE 1/4F	1/4F	1	1	1	1	1		
10	R01 E61 440	POWER RECEIVER		1	1	1	1	1		
11	R01 H78 202	THERMISTOR (PLATE.HEX)	Inlet Water	1	1	1	1	1		TH32
12	R01 H24 408	PLATE HEAT EXCHANGER	MWA2-46LM	1	1	1	1	1		
13	R01 E22 201	THERMISTOR (DIS)	Discharge	1	1	1	1	1		TH4
14	R01 H79 202	THERMISTOR	Suction	1	1	1	1	1		TH33
15	R01 E24 413	CHARGE PLUG /LB90		1	2	1	2	2		
16	R01 E10 467	MUFFLER		1		1				
17	R01 E49 242	COIL (LEV) /XAP-6P RED	UKV type	1	1	1	1	1		LEV-B
18	R01 H20 401	LEV		2		2			Coil LEV-A,B	
	T7W E27 401	LEV			2		2	2		
19	R01 E68 242	COIL (LEV) /XAP-6P BLU	UKV type	1	1	1	1	1		LEV-C
20	R01 H22 401	LEV		1	1	1	1	1	Coil LEV-C	
21	R01 E50 242	COIL (LEV) /XAP-6P WH	UKV type	1	1	1	1	1		LEV-A
22	R01 E15 403	4 WAY VALVE		1	1	1	1	1		21S4
23	T7W E41 242	SOLENOID COIL (21S4)		1	1	1	1	1		21S4
24	R01 E06 208	HIGH PRESSURE SWITCH		1	1	1	1	1		63H
25	T7W E61 716	T.B. /LNE.S1.S2.S3	6P (L,N,⊕,S1,S2,S3)	1	1	1	1	1		TB1
26	—	ELECTRICAL PARTS BOX		1	1	1	1	1	(BK00C681G37)	
27	T7W E88 315	CONTROLLER BOARD		1	1	1	1			C.B.
	T7W E98 315	CONTROLLER BOARD						1		C.B.
28	R01 E43 259	REACTOR		1	1	1	1	1		DCL
29	R01 A50 353	POWER BOARD		1	1	1	1	1		P.B.
30	R01 H00 202	THERMISTOR	Liquid	1	1	1	1	1		TH3
31	R01 H99 202	THERMISTOR W	Plate Hex Liquid, Ambient	1	1	1	1	1		TH6/7
32	R01 E20 254	CAPACITOR		1	1	1	1	1		CB
33	R01 E06 239	FUSE 6.3 A 250 V	6.3 A, 250 V	4		4				F1,2,3,4
	R01 E14 239	FUSE 6.3 A 250 V	6.3 A, 250 V		4		4	4		F1,2,3,4

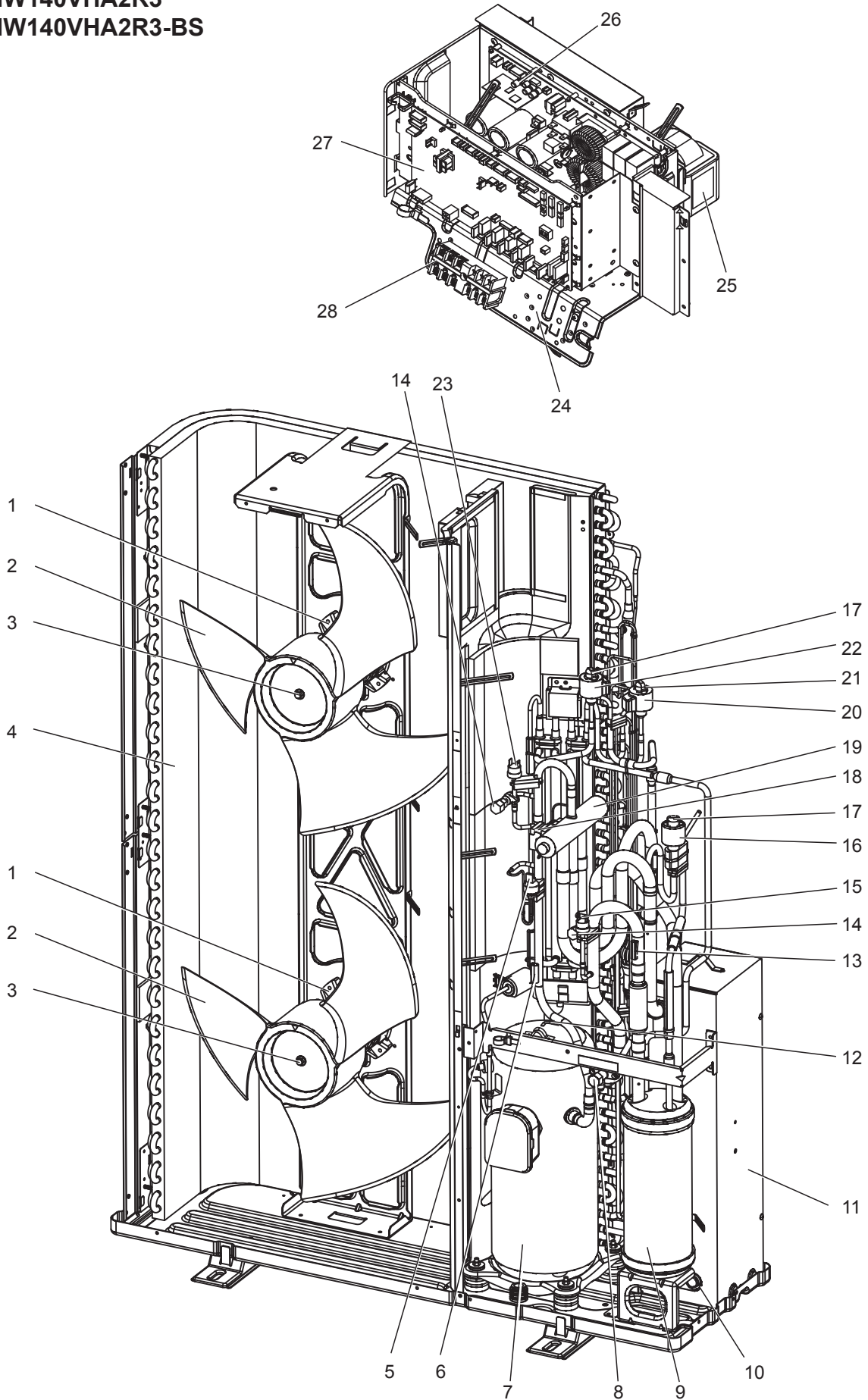
FUNCTIONAL AND ELECTRICAL PARTS
PUHZ-HW140VHA2R1 PUHZ-HW140VHA2R2-BS



Parts numbers that are circled are not shown in the figure.

No.	Parts No.	Parts Name	Specification	Q'ty/unit		Remarks (Drawing No.)	Wiring Diagram Symbol
				PUHZ-HW140VHA2R1	PUHZ-HW140VHA2R2-BS		
1	R01 E50 221	FAN MOTOR		2	2		MF1,2
2	R01 E12 115	PROPELLER FAN		2	2		
3	R01 E09 097	NUT M6		2	2		
4	T7W E63 408	HEAT EXCHANGER		1	1		
5	R01 E07 208	HIGH PRESSURE SENSOR		1	1		63HS
6	R01 E00 209	LOW PRESSURE SWITCH		1	1		63L
7	T97 415 780	COMPRESSOR	ANB42FJGMT	1	1	Includes RUBBER MOUNTS	MC
8	R01 E10 411	STOP VALVE 1/4F	1/4F	1	1		
9	R01 E61 440	POWER RECEIVER		1	1		
10	R01 H85 202	THERMISTOR (PLATE.HEX)	Inlet Water	1	1		TH32
11	R01 H24 408	PLATE HEAT EXCHANGER	MWA2-46LM	1	1		
12	R01 E22 201	THERMISTOR (DIS)	Discharge	1	1		TH4
13	R01 H79 202	THERMISTOR	Suction	1	1		TH33
14	R01 E24 413	CHARGE PLUG /LB90		2	2		
15	R01 E49 242	COIL (LEV) /XAP-6P RED	UKV type	1	1		LEV-B
16	T7W E27 401	LEV		2	2	Coil LEV-A,B	
17	R01 E68 242	COIL (LEV) /XAP-6P BLU	UKV type	1	1		LEV-C
18	R01 H22 401	LEV		1	1	Coil LEV-C	
19	R01 E50 242	COIL (LEV) /XAP-6P WH	UKV type	1	1		LEV-A
20	R01 E15 403	4 WAY VALVE		1	1		21S4
21	T7W E41 242	SOLENOID COIL (21S4)		1	1		21S4
22	R01 E06 208	HIGH PRESSURE SWITCH		1	1		63H
23	T7W E61 716	T.B. /LNE.S1.S2.S3	6P (L,N,⊕,S1,S2,S3)	1	1		TB1
24	—	ELECTRICAL PARTS BOX		1	1	(BK00C681G37)	
25	R01 F44 310	CONTROLLER BOARD		1	1		C.B.
26	R01 E43 259	REACTOR		1	1		DCL
27	R01 A50 353	POWER BOARD		1	1		P.B.
28	R01 H00 202	THERMISTOR	Liquid	1	1		TH3
29	R01 H99 202	THERMISTOR W	Plate Hex Liquid, Ambient	1	1		TH6/7
30	R01 E20 254	CAPACITOR		1	1		CB
31	R01 E14 239	FUSE 6.3 A 250 V	6.3 A, 250 V	4	4		F1,2,3,4

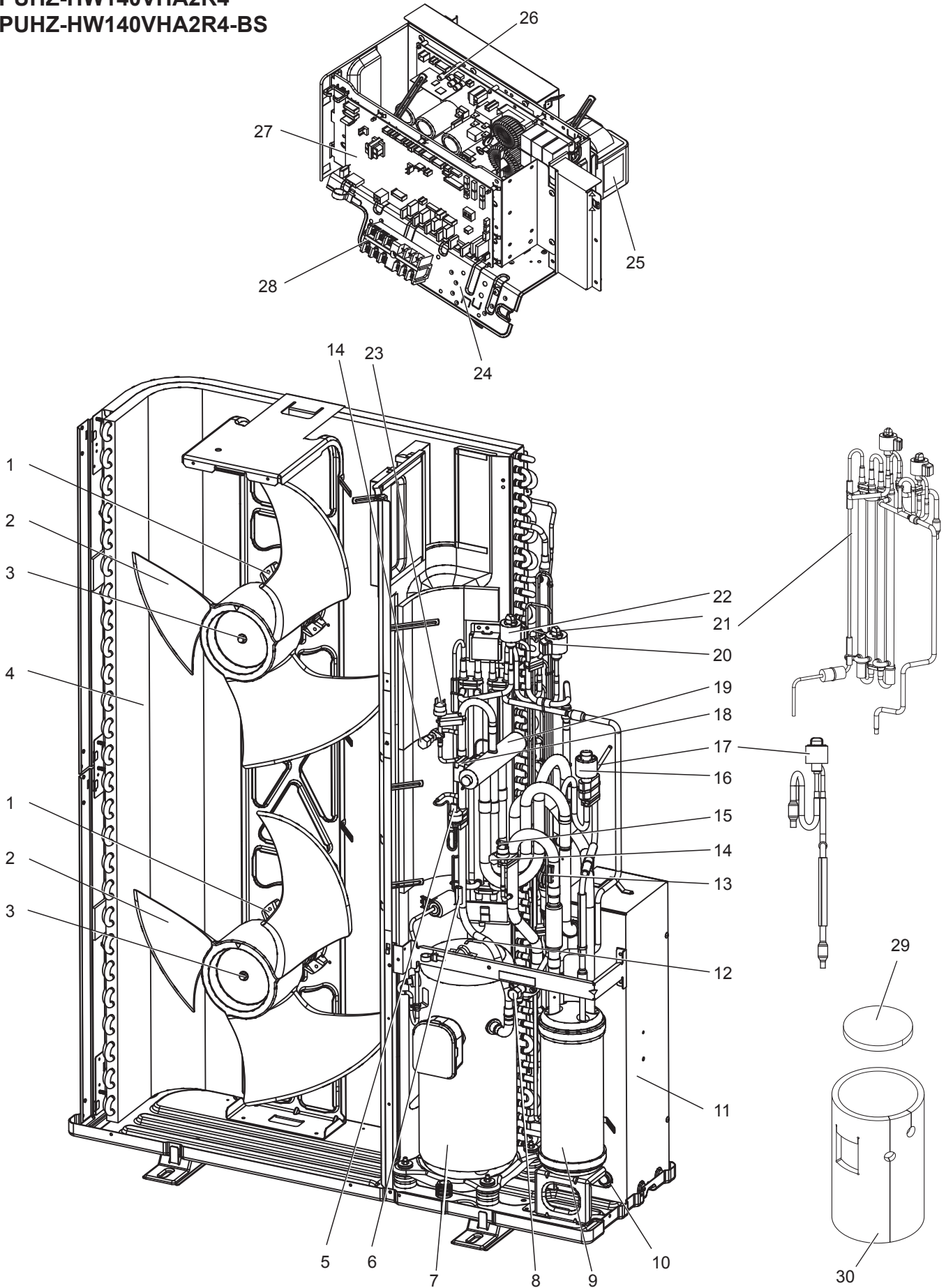
FUNCTIONAL AND ELECTRICAL PARTS
PUHZ-HW140VHA2R3
PUHZ-HW140VHA2R3-BS



Parts numbers that are circled are not shown in the figure.

No.	Parts No.	Parts Name	Specification	Q'ty/unit		Remarks (Drawing No.)	Wiring Diagram Symbol
				PUHZ-HW140VHA2R3	PUHZ-HW140VHA2R3-BS		
1	R01 E50 221	FAN MOTOR		2	2		MF1,2
2	R01 E12 115	PROPELLER FAN		2	2		
3	R01 E09 097	NUT M6		2	2		
4	T7W E67 408	HEAT EXCHANGER		1	1		
5	R01 E07 208	HIGH PRESSURE SENSOR		1	1		63HS
6	R01 E22 201	THERMISTOR (DIS)	Discharge	1	1		TH4
7	T97 418 077	COMPRESSOR	ANB42FJKMT	1	1	Includes RUBBER MOUNTS	MC
8	R01 E10 411	STOP VALVE 1/4F	1/4F	1	1		
9	R01 E61 440	POWER RECEIVER		1	1		
10	R01 H85 202	THERMISTOR (PLATE.HEX)	Inlet Water	1	1		TH32
11	R01 H24 408	PLATE HEAT EXCHANGER	MWA2-46LM	1	1		
12	R01 H90 202	THERMISTOR	Comp. Surface	1	1		TH34
13	R01 H79 202	THERMISTOR	Suction	1	1		TH33
14	R01 E24 413	CHARGE PLUG /LB90		2	2		
15	R01 E00 209	LOW PRESSURE SWITCH		1	1		63L
16	R01 H08 242	COIL (LEV) /XAP-5P RED	UKV type	1	1		LEV-B
17	T7W E27 401	LEV		2	2	Coil LEV-A,B	
18	T7W E41 242	SOLENOID COIL (21S4)		1	1		21S4
19	R01 E15 403	4 WAY VALVE		1	1		21S4
20	R01 H10 242	COIL (LEV) /XAP-5P BLU	UKV type	1	1		LEV-C
21	R01 H22 401	LEV		1	1	Coil LEV-C	
22	R01 H09 242	COIL (LEV) /XAP-5P WH	UKV type	1	1		LEV-A
23	R01 E06 208	HIGH PRESSURE SWITCH		1	1		63H
24	—	ELECTRICAL PARTS BOX		1	1	(BK00C681G37)	
25	R01 E43 259	REACTOR		1	1		DCL
26	R01 A50 353	POWER BOARD		1	1		P.B.
27	T7W F15 315	CONTROLLER BOARD		1	1		C.B.
28	T7W E61 716	T.B. /LNE.S1.S2.S3	6P (L,N,⊕,S1,S2,S3)	1	1		TB1
29	R01 H00 202	THERMISTOR	Liquid	1	1		TH3
30	R01 H99 202	THERMISTOR W	Plate Hex Liquid, Ambient	1	1		TH6/7
31	R01 E20 254	CAPACITOR		1	1		CB
32	R01 E14 239	FUSE 6.3 A 250 V	6.3 A, 250 V	4	4		F1,2,3,4

FUNCTIONAL AND ELECTRICAL PARTS
PUHZ-HW140VHA2R4
PUHZ-HW140VHA2R4-BS

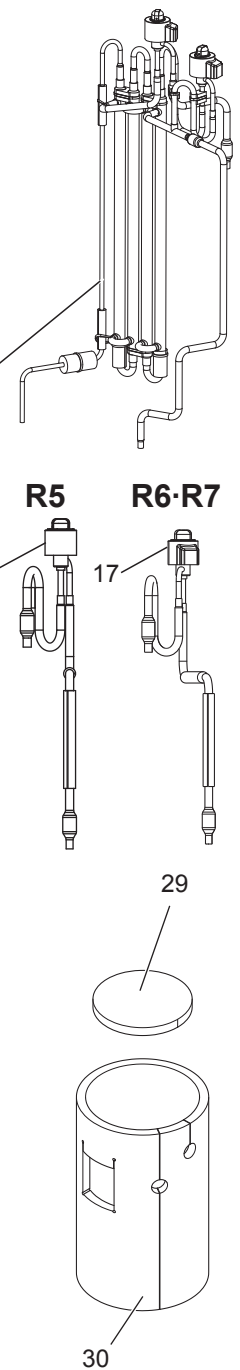
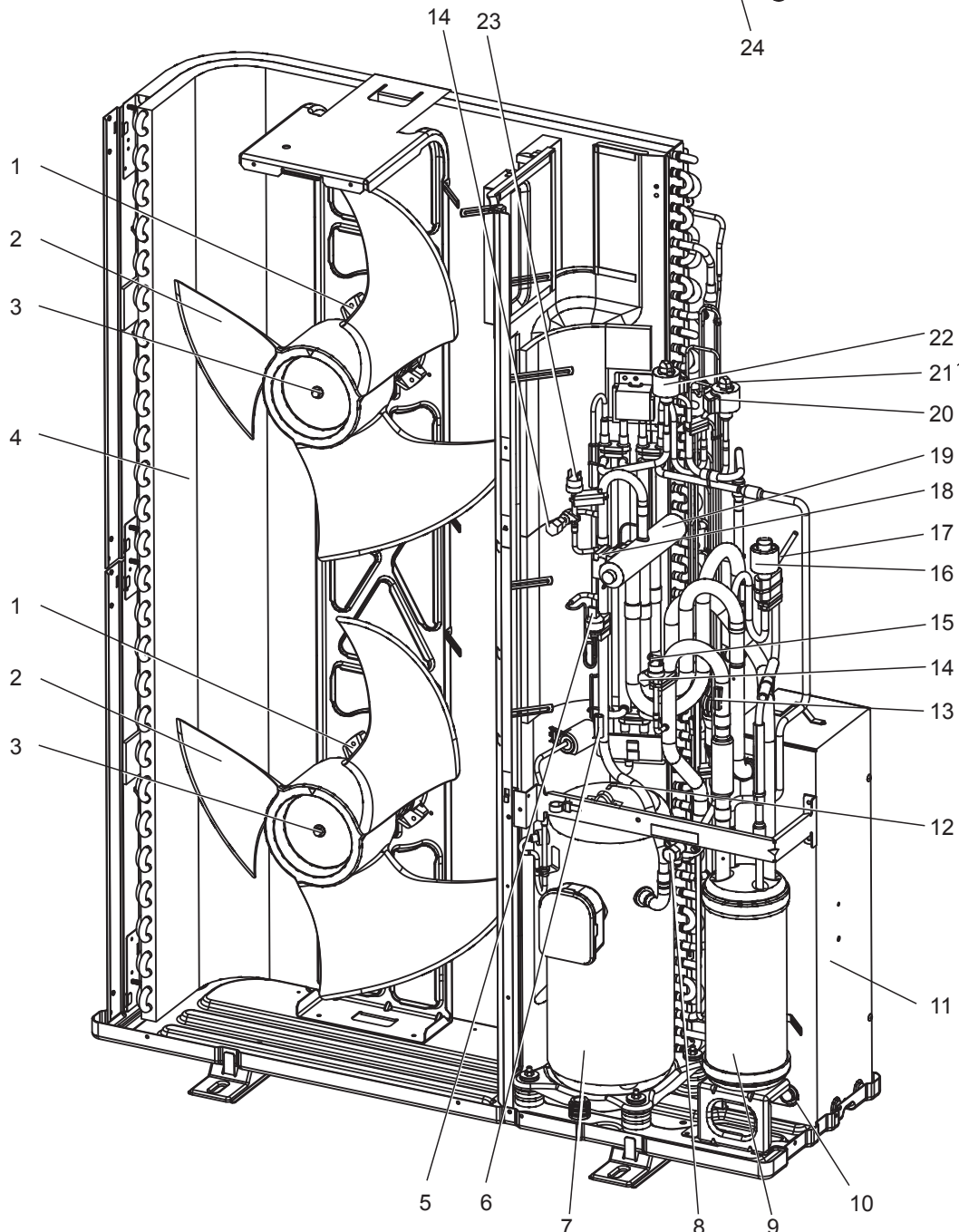
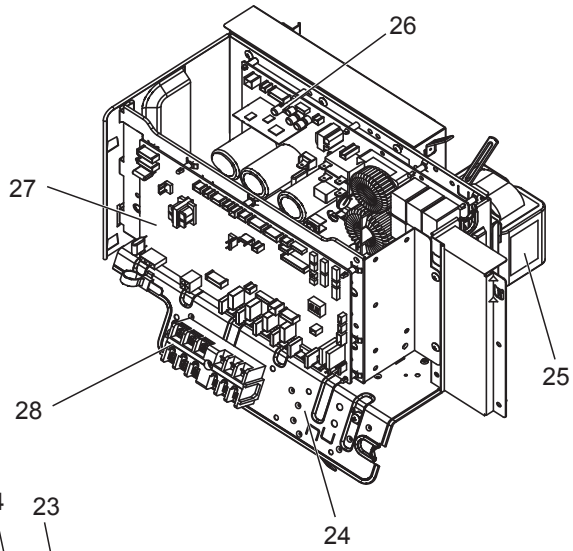


Parts numbers that are circled are not shown in the figure.

No.	Parts No.	Parts Name	Specification	Q'ty/unit		Remarks (Drawing No.)	Wiring Diagram Symbol
				PUHZ-HW140VHA2R4	PUHZ-HW140VHA2R4-BS		
1	R01 E50 221	FAN MOTOR		2	2		MF1,2
2	R01 E12 115	PROPELLER FAN		2	2		
3	R01 E09 097	NUT M6		2	2		
4	T7W E67 408	HEAT EXCHANGER		1	1		
5	R01 E07 208	HIGH PRESSURE SENSOR		1	1		63HS
6	R01 E22 201	THERMISTOR (DIS)	Discharge	1	1		TH4
7	T97 418 077	COMPRESSOR	ANB42FJKMT	1	1	Includes RUBBER MOUNTS	MC
8	R01 E10 411	STOP VALVE 1/4F	1/4F	1	1		
9	R01 E61 440	POWER RECEIVER		1	1		
10	R01 H85 202	THERMISTOR (PLATE.HEX)	Inlet Water	1	1		TH32
11	R01 H24 408	PLATE HEAT EXCHANGER	MWA2-46LM	1	1		
12	R01 H90 202	THERMISTOR	Comp. Surface	1	1		TH34
13	R01 H79 202	THERMISTOR	Suction	1	1		TH33
14	R01 E24 413	CHARGE PLUG /LB90		2	2		
15	R01 E00 209	LOW PRESSURE SWITCH		1	1		63L
16	R01 H08 242	COIL (LEV) /XAP-5P RED	UKV type	1	1		LEV-B
17	T7W E35 401	LEV ASSY-B		1	1	Includes LEV-B coil	
18	T7W E41 242	SOLENOID COIL (21S4)		1	1		21S4
19	R01 E15 403	4 WAY VALVE		1	1		21S4
20	R01 H10 242	COIL (LEV) /XAP-5P BLU	UKV type	1	1		LEV-C
21	T7W E36 401	LEV ASSY HIC		1	1	Includes LEV-A, C coil	
22	R01 H09 242	COIL (LEV) /XAP-5P WH	UKV type	1	1		LEV-A
23	R01 E06 208	HIGH PRESSURE SWITCH		1	1		63H
24	—	ELECTRICAL PARTS BOX		1	1	(BK00C681G37)	
25	R01 E43 259	REACTOR		1	1		DCL
26	R01 A50 353	POWER BOARD		1	1		P.B.
27	T7W GJ0 315	CONTROLLER BOARD		1	1		C.B.
28	T7W E61 716	T.B. /LNE.S1.S2.S3	6P (L,N,⊕,S1,S2,S3)	1	1		TB1
29	R01 A57 602	COMP FELT (TOP)		1	1		
30	R01 A70 602	COMP FELT (BODY)		1	1		
31	R01 A10 371	HEAT SINK		1	1	Includes SCREWS	
32	R01 E34 510	LEAD ASSY COMP		1	1		
33	R01 H00 202	THERMISTOR	Liquid	1	1		TH3
34	R01 H99 202	THERMISTOR W	Plate Hex Liquid, Ambient	1	1		TH6,7
35	R01 E20 254	CAPACITOR		1	1		CB
36	R01 E14 239	FUSE 6.3 A 250 V	6.3 A, 250 V	4	4		F1,2,3,4

FUNCTIONAL AND ELECTRICAL PARTS

- PUHZ-HW140VHA2R5**
- PUHZ-HW140VHA2R5-BS**
- PUHZ-HW140VHA2R6**
- PUHZ-HW140VHA2R6-BS**
- PUHZ-HW140VHA2R7**
- PUHZ-HW140VHA2R7-BS**





Parts numbers that are circled are not shown in the figure.

No.	Parts No.	Parts Name	Specification	Q'ty/unit						Remarks (Drawing No.)	Wiring Diagram Symbol
				PUHZ-HW140VHA2R5	PUHZ-HW140VHA2R6	PUHZ-HW140VHA2R7	PUHZ-HW140VHA2R5-BS	PUHZ-HW140VHA2R6-BS	PUHZ-HW140VHA2R7-BS		
1	R01 E88 221	FAN MOTOR		2	2	2	2	2	2		MF1,2
2	R01 E12 115	PROPELLER FAN		2	2	2	2	2	2		
3	R01 E09 097	NUT M6		2			2				
	R01 E16 097	CAP NUT (MEC) M6			2	2		2	2		
4	T7W H67 408	HEAT EXCHANGER		1	1	1	1	1	1		
5	R01 H07 208	HIGH PRESSURE SENSOR		1	1	1	1	1	1		63HS
6	R01 E22 201	THERMISTOR (DIS)	Discharge	1	1	1	1	1	1		TH4
7	T97 472 077	COMPRESSOR	ANB42FJKMT	1	1	1	1	1	1	Includes RUBBER MOUNTS	MC
8	R01 E10 411	STOP VALVE 1/4F	1/4F	1	1	1	1	1	1		
9	R01 H61 440	POWER RECEIVER		1	1	1	1	1	1		
10	R01 H85 202	THERMISTOR (PLATE.HEX)	Inlet Water	1	1		1	1		R1/4	TH32
	R01 H78 202	THERMISTOR (PLATE.HEX)				1			1	R1/2, R1/4 SET	TH32
11	R01 R24 408	PLATE HEAT EXCHANGER	MWA2-46LM	1	1		1	1		R1/4	
	T7W W01 408	PLATE HEAT EXCHANGER				1			1	R1/2	
12	R01 H90 202	THERMISTOR	Comp. Surface	1	1	1	1	1	1		TH34
13	R01 H79 202	THERMISTOR	Suction	1	1	1	1	1	1		TH33
14	R01 E24 413	CHARGE PLUG /LB90		2	2	2	2	2	2		
15	R01 H00 209	LOW PRESSURE SWITCH		1	1	1	1	1	1		63L
16	R01 HR8 242	COIL (LEV) /XAP-5P RED	UKV type	1	1	1	1	1	1		LEV-B
17	T7W E35 401	LEV ASSY-B /REC-P.HEX		1			1			Includes LEV-B coil	
	T7W H02 401	LEV ASSY-B /REC-P.HEX			1	1		1	1	Includes LEV-B coil	
18	T7W H87 242	SOLENOID COIL (21S4)		1	1	1	1	1	1		21S4
19	R01 E15 403	4 WAY VALVE		1	1	1	1	1	1		21S4
20	R01 HR0 242	COIL (LEV) /XAP-5P BLU	UKV type	1	1	1	1	1	1		LEV-C
21	T7W H36 401	LEV ASSY HIC		1	1	1	1	1	1	Includes LEV-A, C coil	
22	R01 HR9 242	COIL (LEV) /XAP-5P WH	UKV type	1	1	1	1	1	1		LEV-A
23	R01 H06 208	HIGH PRESSURE SWITCH		1	1	1	1	1	1		63H
24	—	ELECTRICAL PARTS BOX		1	1	1	1	1	1	(BK00C681G38)	
25	R01 E43 259	REACTOR		1	1	1	1	1	1		DCL
26	T7W AS1 323	POWER BOARD		1	1	1	1	1	1		P.B.
27	T7W GW1 315	CONTROLLER BOARD		1			1				C.B.
	T7W GW2 315	CONTROLLER BOARD			1	1		1	1		C.B.
28	T7W E61 716	T.B. /LNE.S1.S2.S3	6P (L,N,⊕,S1,S2,S3)	1	1	1	1	1	1		TB1
29	R01 A57 602	COMP FELT (TOP)		1	1	1	1	1	1		
30	R01 A70 602	COMP FELT (BODY)		1			1				
	T7W A17 602	COMP FELT (BODY)			1	1		1	1		
31	R01 A10 371	HEAT SINK		1	1	1	1	1	1	Includes SCREWS	
32	T7W H03 510	LEAD ASSY COMP		1	1	1	1	1	1		
33	R01 HR4 202	THERMISTOR	Liquid	1	1	1	1	1	1		TH3
34	R01 H99 202	THERMISTOR W	Plate Hex Liquid, Ambient	1	1	1	1	1	1		TH6,7
35	R01 E14 239	FUSE 6.3 A 250 V	6.3 A, 250 V	2	2	2	2	2	2		F3,4
36	R01 E21 239	FUSE 10 A 250 V	10 A, 250 V	2	2	2	2	2	2		F1,2
37	R01 E05 091	THERMISTOR HOLDER			1	1		1	1		

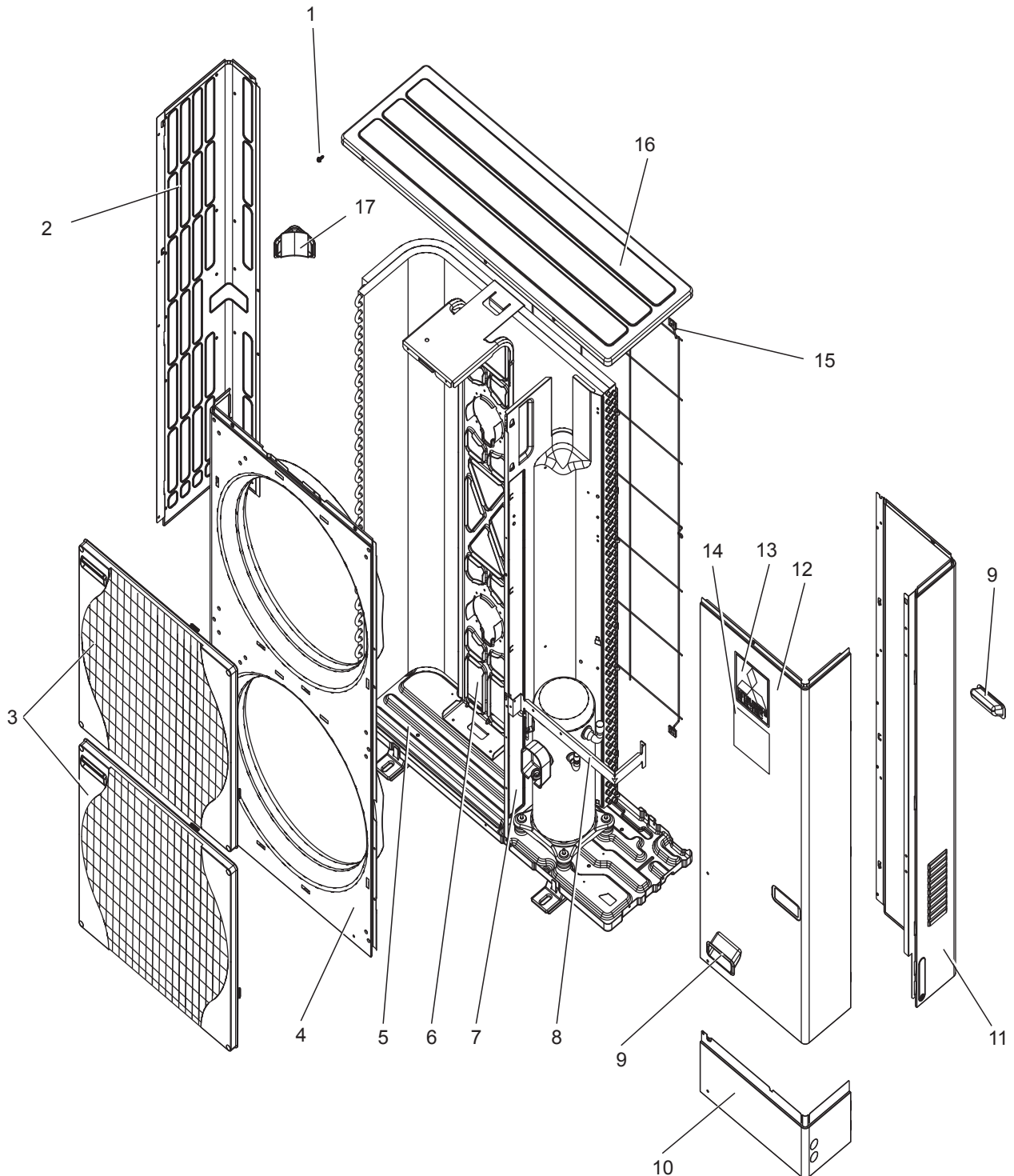


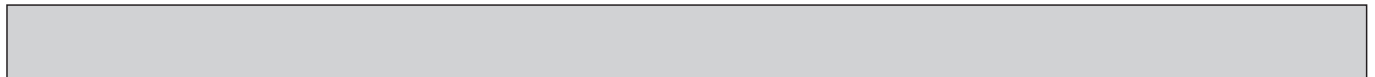
No.	Parts No.	Parts Name	Q'ty/unit											Remarks (Drawing No.)	
			PUHZ-W50VHA	PUHZ-W50VHAR1	PUHZ-W50VHAR2	PUHZ-W50VHAR3	PUHZ-W85VHA	PUHZ-W85VHAR1	PUHZ-W50VHA-BS	PUHZ-W50VHAR1-BS	PUHZ-W50VHAR2-BS	PUHZ-W50VHAR3-BS	PUHZ-W85VHA-BS		PUHZ-W85VHAR1-BS
1	—	F.ST SCREW (5 × 12)	29	29	29	29	29	29	29	29	29	29	29	29	(DG12F536H12)
2	R01 E19 662	SIDE PANEL (L)					1	1					1	1	
	R01 E35 662	SIDE PANEL (L)	1	1	1	1			1	1	1	1			
3	R01 E33 691	GRILLE	1	1	1	1	1	1	1	1	1	1	1	1	
4	R01 E15 668	FRONT PANEL					1	1					1	1	
	R01 E24 668	FRONT PANEL	1	1	1	1			1	1	1	1			
5	T7W E18 686	BASE	1	1	1										
	T7W E20 686	BASE				1			1	1	1	1			
	T7W E21 686	BASE					1	1					1	1	
6	—	SEPARATOR	1	1	1										(BK00C143GH2)
	—	SEPARATOR				1			1	1	1	1			(BK00C143GN4)
	—	SEPARATOR					1	1							(BK00C143GH4)
	—	SEPARATOR											1	1	(BK00C143GN5)
7	—	VALVE BED	1	1	1		1	1							(BK00G125G07)
	—	VALVE BED				1			1	1	1	1	1	1	(BK00G125G13)
8	R01 E01 655	HANDLE	2	2	2	2	2	2	2	2	2	2	2	2	
9	T7W E08 658	COVER PANEL (FRONT)	1	1	1	1	1	1	1	1	1	1	1	1	
10	T7W E01 658	COVER PANEL (REAR)					1	1							
	T7W E09 658	COVER PANEL (REAR)											1	1	
11	T7W E40 661	SIDE PANEL (R)	1	1	1	1			1	1	1	1			
	T7W E21 661	SIDE PANEL (R)					1	1							
	T7W E26 661	SIDE PANEL (R)											1	1	
12	T7W E17 667	SERVICE PANEL	1	1	1	1			1	1	1	1			
	T7W E18 668	SERVICE PANEL					1	1					1	1	
13	—	LABEL (MITSUBISHI)	1	1	1	1	1	1	1	1	1	1	1	1	(DG79R130H03)
14	R01 E09 698	REAR GUARD	1	1	1	1			1	1	1	1			
	R01 E06 698	REAR GUARD					1	1					1	1	
15	R01 E29 641	TOP PANEL	1	1	1	1	1	1	1	1	1	1	1	1	
16	R01 E12 130	MOTOR SUPPORT					1	1					1	1	
	R01 E53 130	MOTOR SUPPORT	1	1	1	1			1	1	1	1			
17	R01 E02 655	HANDLE	1	1	1	1	1	1	1	1	1	1	1	1	

STRUCTURAL PARTS

PUHZ-HW112YHA
PUHZ-HW112YHA2
PUHZ-HW140VHA
PUHZ-HW140YHA
PUHZ-HW140VHA2
PUHZ-HW140YHA2

PUHZ-HW112YHA-BS
PUHZ-HW112YHA2-BS
PUHZ-HW140VHA-BS
PUHZ-HW140YHA-BS
PUHZ-HW140VHA2-BS
PUHZ-HW140YHA2-BS
PUHZ-HW140VHA2R1-BS

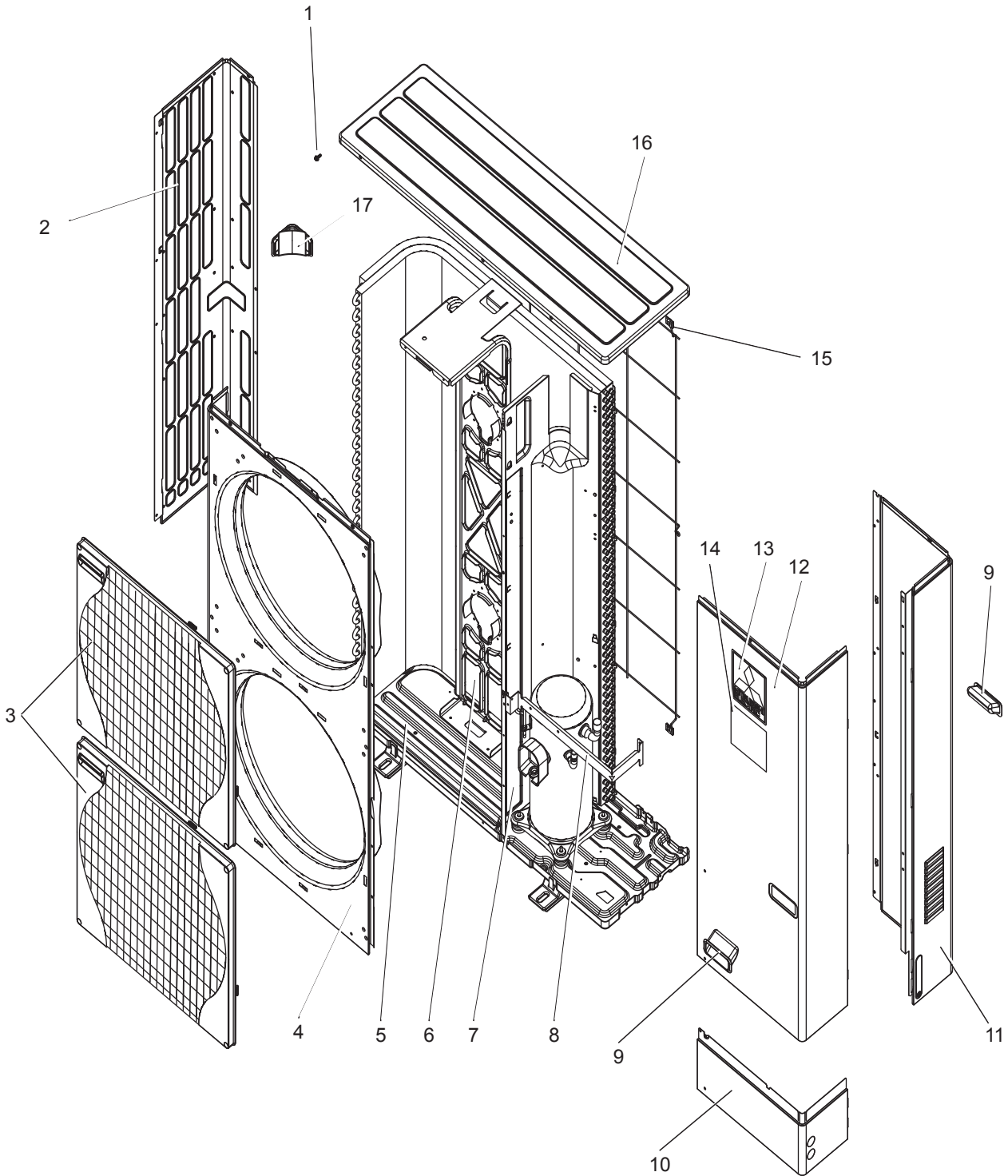




No.	Parts No.	Parts Name	Q'ty/unit													Remarks (Drawing No.)
			PUHZ-HW112YHA	PUHZ-HW112YHA2	PUHZ-HW140VHA	PUHZ-HW140VHA2	PUHZ-HW140YHA	PUHZ-HW140YHA2	PUHZ-HW112YHA-BS	PUHZ-HW112YHA2-BS	PUHZ-HW140VHA-BS	PUHZ-HW140VHA2-BS	PUHZ-HW140YHA-BS	PUHZ-HW140YHA2-BS	PUHZ-HW140VHA2R1-BS	
1	—	F.ST SCREW (5 × 12)	36	36	36	36	36	36	36	36	36	36	36	36	36	(DG12F536H12)
2	R01 E33 662	SIDE PANEL (L)	1	1	1	1	1	1	1	1	1	1	1	1	1	
3	R01 E33 691	GRILLE	2	2	2	2	2	2	2	2	2	2	2	2	2	
4	R01 E16 668	FRONT PANEL	1	1	1	1	1	1	1	1	1	1	1	1	1	
5	T7W E19 686	BASE	1	1	1	1	1	1								
	R01 E55 686	BASE							1	1	1	1	1	1	1	
6	R01 E19 130	MOTOR SUPPORT	1	1	1	1	1	1	1	1	1	1	1	1	1	
7	—	SEPARATOR			1	1										(BK00C143GM5)
	—	SEPARATOR	1	1			1	1								(BK00C409G46)
	—	SEPARATOR									1	1			1	(BK00C143GN9)
	—	SEPARATOR							1	1			1	1		(BK00C409G51)
8	—	VALVE BED	1	1	1	1	1	1								(BK00G125G11)
	—	VALVE BED							1	1	1	1	1	1	1	(BK00G125G14)
9	R01 E01 655	HANDLE	2	2	2	2	2	2	2	2	2	2	2	2	2	
10	R01 E37 658	COVER PANEL (FRONT)	1	1	1	1	1	1	1	1	1	1	1	1	1	
11	R01 E61 661	SIDE PANEL (R)	1	1	1	1	1	1	1	1	1	1	1	1	1	
12	T7W E12 667	SERVICE PANEL	1	1	1	1	1	1								
	R01 E34 667	SERVICE PANEL							1	1	1	1	1	1	1	
13	—	BRAND LABEL (MITSUBISHI)	1	1	1	1	1	1	1	1	1	1	1	1	1	(DG79R130H03)
14	T7W A05 005	LABEL (ZUBADAN)		1		1		1		1		1		1	1	
15	R01 E07 698	REAR GUARD	1	1	1	1	1	1	1	1	1	1	1	1	1	
16	T7W E07 641	TOP PANEL	1	1			1	1								
	R01 E34 641	TOP PANEL			1	1					1	1			1	
	T7W E10 641	TOP PANEL							1	1			1	1		
17	R01 E02 655	HANDLE	1	1	1	1	1	1	1	1	1	1	1	1	1	

STRUCTURAL PARTS
PUHZ-HW112YHA2R1
PUHZ-HW140VHA2R1
PUHZ-HW140YHA2R1

PUHZ-HW112YHA2R1-BS
PUHZ-HW140VHA2R2-BS
PUHZ-HW140YHA2R1-BS



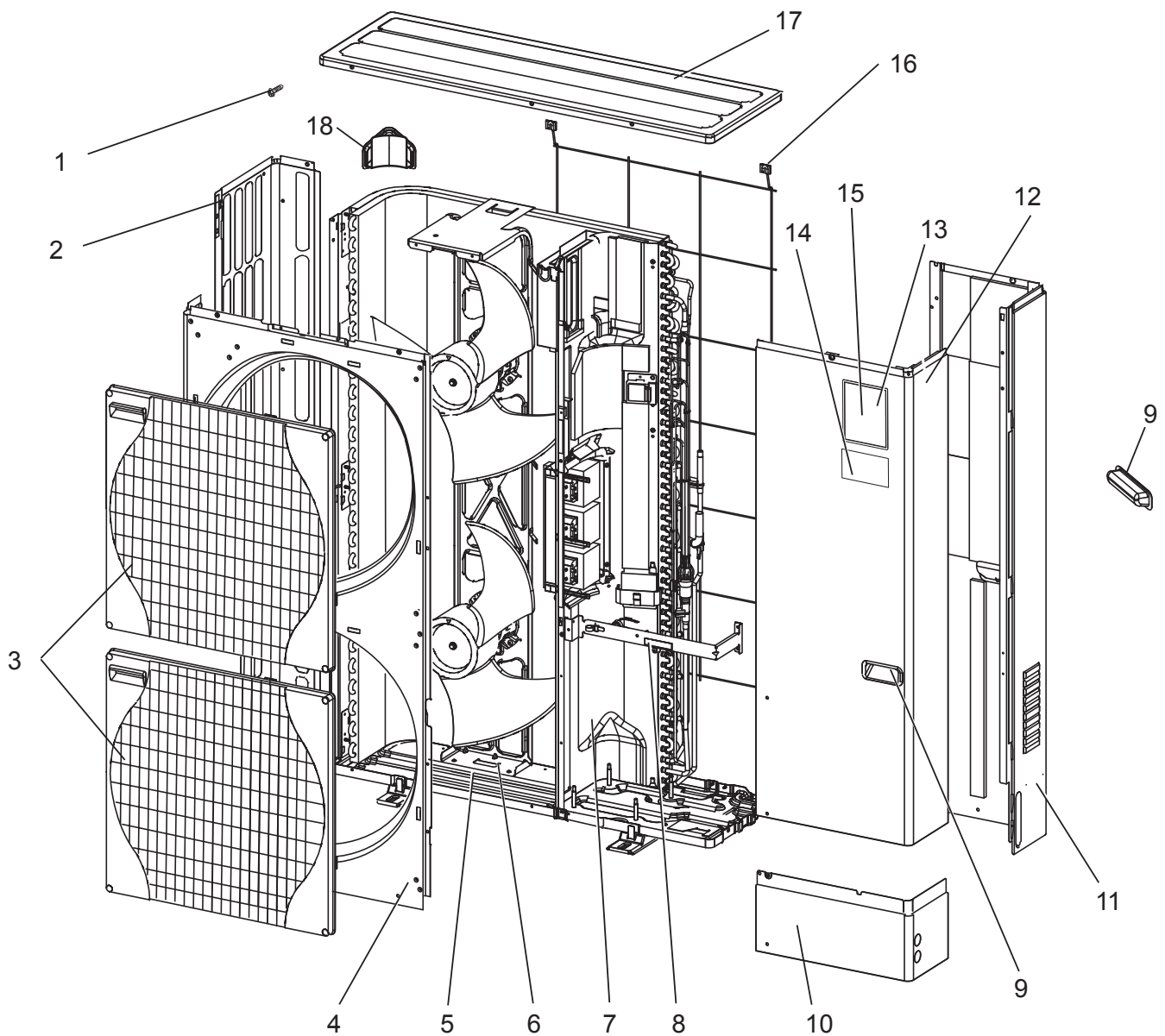


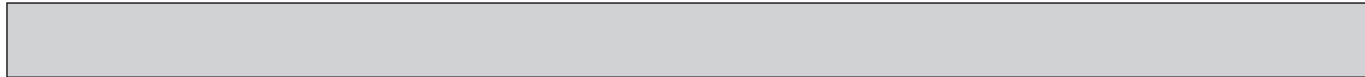
No.	Parts No.	Parts Name	Q'ty/unit						Remarks (Drawing No.)
			PUHZ-HW112YHA2R1	PUHZ-HW140VHA2R1	PUHZ-HW140YHA2R1	PUHZ-HW112YHA2R1-BS	PUHZ-HW140VHA2R2-BS	PUHZ-HW140YHA2R1-BS	
1	—	F.ST SCREW (5 × 12)	36	36	36	36	36	36	(DG12F536H12)
2	R01 E33 662	SIDE PANEL (L)	1	1	1	1	1	1	
3	R01 E33 691	GRILLE	2	2	2	2	2	2	
4	R01 E16 668	FRONT PANEL	1	1	1	1	1	1	
5	T7W E19 686	BASE	1	1	1				
	R01 E55 686	BASE				1	1	1	
6	R01 E19 130	MOTOR SUPPORT	1	1	1	1	1	1	
7	—	SEPARATOR		1					(BK00C143GM5)
	—	SEPARATOR	1		1				(BK00C409G46)
	—	SEPARATOR					1		(BK00C143GN9)
	—	SEPARATOR				1		1	(BK00C409G51)
8	—	VALVE BED	1	1	1				(BK00G125G11)
	—	VALVE BED				1	1	1	(BK00G125G14)
9	R01 E01 655	HANDLE	2	2	2	2	2	2	
10	R01 E37 658	COVER PANEL (FRONT)	1	1	1	1	1	1	
11	R01 E61 661	SIDE PANEL (R)	1	1	1	1	1	1	
12	T7W E12 667	SERVICE PANEL	1	1	1				
	R01 E34 667	SERVICE PANEL				1	1	1	
13	—	BRAND LABEL (MITSUBISHI)	1	1	1	1	1	1	(DG79R130H03)
14	T7W A05 005	LABEL (ZUBADAN)	1	1	1	1	1	1	
15	R01 E07 698	REAR GUARD	1	1	1	1	1	1	
16	T7W E07 641	TOP PANEL	1		1				
	R01 E34 641	TOP PANEL		1			1		
	T7W E10 641	TOP PANEL				1		1	
17	R01 E02 655	HANDLE	1	1	1	1	1	1	

STRUCTURAL PARTS

PUHZ-HW112YHA2R3
 PUHZ-HW112YHA2R4
 PUHZ-HW112YHA2R5
 PUHZ-HW112YHA2R6
 PUHZ-HW112YHA2R7
 PUHZ-HW140YHA2R3
 PUHZ-HW140YHA2R4
 PUHZ-HW140YHA2R5
 PUHZ-HW140YHA2R6
 PUHZ-HW140YHA2R7

PUHZ-HW112YHA2R3-BS
 PUHZ-HW112YHA2R4-BS
 PUHZ-HW112YHA2R5-BS
 PUHZ-HW112YHA2R6-BS
 PUHZ-HW112YHA2R7-BS
 PUHZ-HW140YHA2R3-BS
 PUHZ-HW140YHA2R4-BS
 PUHZ-HW140YHA2R5-BS
 PUHZ-HW140YHA2R6-BS
 PUHZ-HW140YHA2R7-BS

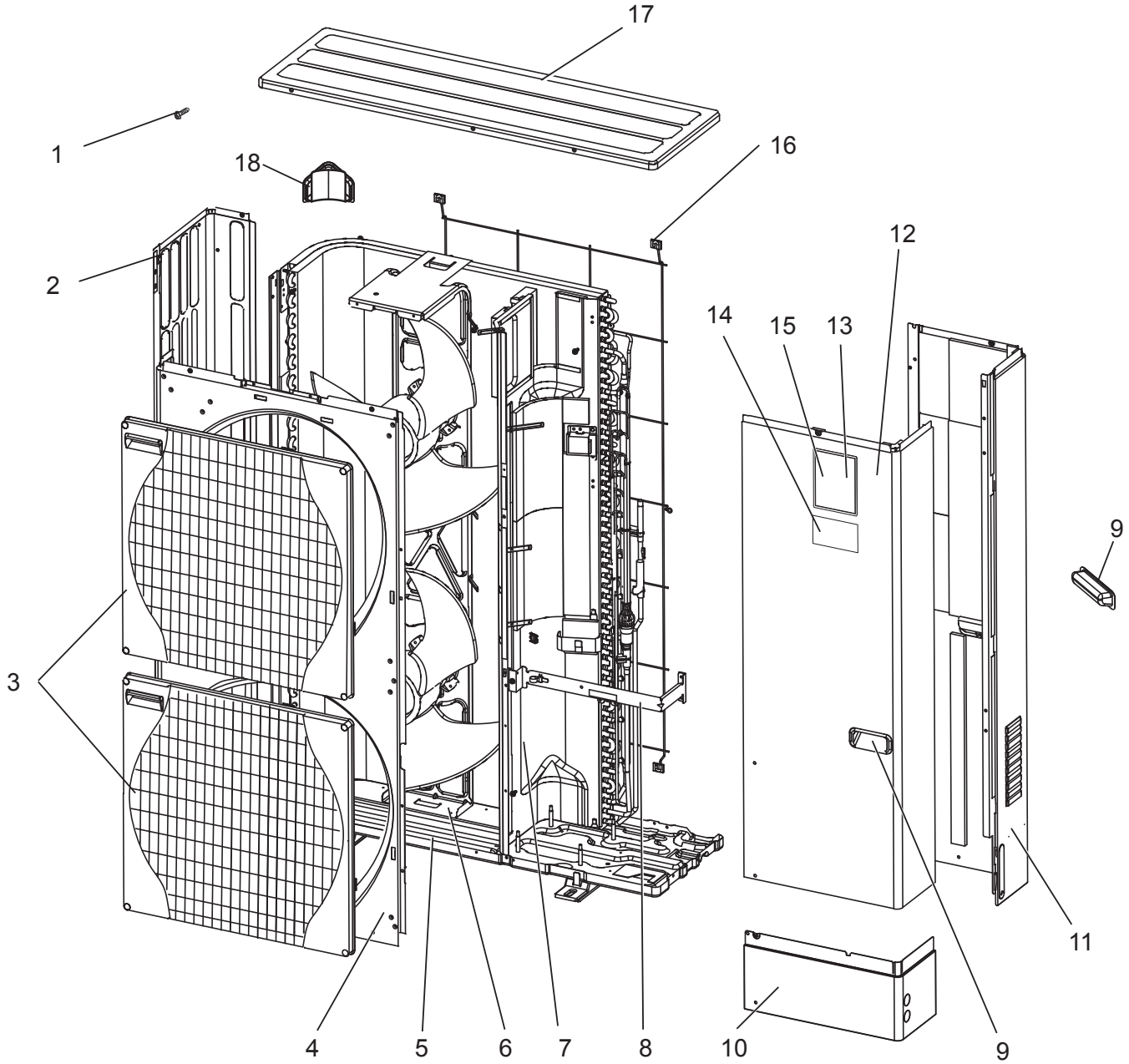


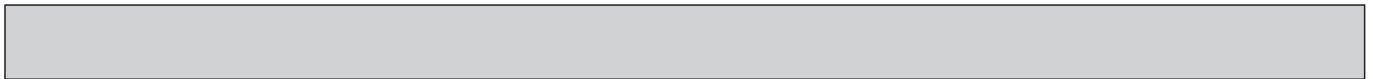


No.	Parts No.	Parts Name	Q'ty/unit														Remarks (Drawing No.)						
			PUHZ-HW112YHA2R3	PUHZ-HW112YHA2R4	PUHZ-HW112YHA2R5	PUHZ-HW112YHA2R6	PUHZ-HW112YHA2R7	PUHZ-HW140YHA2R3	PUHZ-HW140YHA2R4	PUHZ-HW140YHA2R5	PUHZ-HW140YHA2R6	PUHZ-HW140YHA2R7	PUHZ-HW112YHA2R3-BS	PUHZ-HW112YHA2R4-BS	PUHZ-HW112YHA2R5-BS	PUHZ-HW112YHA2R6-BS		PUHZ-HW112YHA2R7-BS	PUHZ-HW140YHA2R3-BS	PUHZ-HW140YHA2R4-BS	PUHZ-HW140YHA2R5-BS	PUHZ-HW140YHA2R6-BS	PUHZ-HW140YHA2R7-BS
1	—	F.ST SCREW (5 × 12)	36	36	36	36	36	36	36	36	36	36	36	36	36	36	36	36	36	36	36	36	(BT12L041H12)
2	R01 E33 662	SIDE PANEL (L)	1	1	1	1	1	1	1	1	1	1	1	1	1	1	1	1	1	1	1	1	
3	R01 E33 691	GRILLE	2	2	2	2	2	2	2	2	2	2	2	2	2	2	2	2	2	2	2	2	
4	R01 E16 668	FRONT PANEL	1	1	1	1	1	1	1	1	1	1	1	1	1	1	1	1	1	1	1	1	
5	R01 E55 686	BASE	1	1	1	1	1	1	1	1	1	1	1	1	1	1	1	1	1	1	1	1	
6	R01 E62 130	MOTOR SUPPORT	1	1	1	1	1	1	1	1	1	1	1	1	1	1	1	1	1	1	1	1	
7	—	SEPARATOR	1	1	1	1	1	1	1	1	1	1	1	1	1	1	1	1	1	1	1	1	(BK00C409G55)
8	—	VALVE BED	1	1	1	1	1	1	1	1	1	1	1	1	1	1	1	1	1	1	1	1	(BK00G125G14)
9	R01 E01 655	HANDLE	2	2	2	2	2	2	2	2	2	2	2	2	2	2	2	2	2	2	2	2	
10	R01 E37 658	COVER PANEL (FRONT)	1	1	1	1	1	1	1	1	1	1	1	1	1	1	1	1	1	1	1	1	
11	R01 E61 661	SIDE PANEL (R)	1	1	1	1	1	1	1	1	1	1	1	1	1	1	1	1	1	1	1	1	
12	R01 E34 667	SERVICE PANEL	1	1	1	1	1	1	1	1	1	1	1	1	1	1	1	1	1	1	1	1	
13	—	BRAND LABEL (MITSUBISHI)	1	1				1	1				1	1				1	1				(DG79R130H03)
14	T7W A05 005	LABEL (ZUBADAN)	1	1	1	1	1	1	1	1	1	1	1	1	1	1	1	1	1	1	1	1	
15	T7W A03 005	BRAND LABEL (ECODAN)			1	1	1			1	1	1			1	1	1			1	1	1	
16	R01 E07 698	REAR GUARD	1	1	1	1	1	1	1	1	1	1	1	1	1	1	1	1	1	1	1	1	
17	T7W E10 641	TOP PANEL	1	1	1	1	1	1	1	1	1	1	1	1	1	1	1	1	1	1	1	1	
18	R01 E02 655	HANDLE	1	1	1	1	1	1	1	1	1	1	1	1	1	1	1	1	1	1	1	1	

STRUCTURAL PARTS
PUHZ-HW140VHA2R3
PUHZ-HW140VHA2R4
PUHZ-HW140VHA2R5
PUHZ-HW140VHA2R6
PUHZ-HW140VHA2R7

PUHZ-HW140VHA2R3-BS
PUHZ-HW140VHA2R4-BS
PUHZ-HW140VHA2R5-BS
PUHZ-HW140VHA2R6-BS
PUHZ-HW140VHA2R7-BS





No.	Parts No.	Parts Name	Q'ty/unit										Remarks (Drawing No.)
			PUHZ-HW140VHA2R3	PUHZ-HW140VHA2R4	PUHZ-HW140VHA2R5	PUHZ-HW140VHA2R6	PUHZ-HW140VHA2R7	PUHZ-HW140VHA2R3-BS	PUHZ-HW140VHA2R4-BS	PUHZ-HW140VHA2R5-BS	PUHZ-HW140VHA2R6-BS	PUHZ-HW140VHA2R7-BS	
1	—	F.ST SCREW (5 × 12)	36	36	36	36	36	36	36	36	36	36	(BT12L041H12)
2	R01 E33 662	SIDE PANEL (L)	1	1	1	1	1	1	1	1	1	1	
3	R01 E33 691	GRILLE	2	2	2	2	2	2	2	2	2	2	
4	R01 E16 668	FRONT PANEL	1	1	1	1	1	1	1	1	1	1	
5	R01 E55 686	BASE	1	1	1	1	1	1	1	1	1	1	
6	R01 E62 130	MOTOR SUPPORT	1	1	1	1	1	1	1	1	1	1	
7	—	SEPARATOR	1					1					(BK00C143GN9)
	—	SEPARATOR		1					1				(BK00C143GP0)
	—	SEPARATOR			1	1	1			1	1	1	(BK00C143GP7)
8	—	VALVE BED	1	1	1	1	1	1	1	1	1	1	(BK00G125G14)
9	R01 E01 655	HANDLE	2	2	2	2	2	2	2	2	2	2	
10	R01 E37 658	COVER PANEL (FRONT)	1	1	1	1	1	1	1	1	1	1	
11	R01 E61 661	SIDE PANEL (R)	1	1	1	1	1	1	1	1	1	1	
12	R01 E34 667	SERVICE PANEL	1	1	1	1	1	1	1	1	1	1	
13	—	BRAND LABEL (MITSUBISHI)	1	1				1	1				(DG79R130H03)
14	T7W A05 005	LABEL (ZUBADAN)	1	1	1	1	1	1	1	1	1	1	
15	T7W A03 005	BRAND LABEL (ECODAN)			1	1	1			1	1	1	
16	R01 E07 698	REAR GUARD	1	1	1	1	1	1	1	1	1	1	
17	R01 E34 641	TOP PANEL	1	1	1	1	1	1	1	1	1	1	
18	R01 E02 655	HANDLE	1	1	1	1	1	1	1	1	1	1	

Parts name	Parts No.
AIR PROTECTION GUIDE (HW112, 140 need 2 pieces.)	PAC-SH63AG-E
AIR OUTLET GUIDE (HW112, 140 need 2 pieces.)	PAC-SG59SG-E
DRAIN SOCKET (Only for W50, 85)	PAC-SG61DS-E
DRAIN PAN (Only for W50, 85)	PAC-SG64DP-E
CONNECTOR FOR DRAIN HOSE HEATER	PAC-SE60RA-E

MITSUBISHI ELECTRIC CORPORATION

HEAD OFFICE: TOKYO BUILDING, 2-7-3, MARUNOUCHI, CHIYODA-KU, TOKYO 100-8310, JAPAN

©Copyright 2008 MITSUBISHI ELECTRIC CORPORATION
 Issued: Apr. 2019 No. OCB439 REVISED EDITION-P
 Issued: Dec. 2017 No. OCB439 REVISED EDITION-N
 Issued: Sep. 2016 No. OCB439 REVISED EDITION-M
 Issued: Jul. 2015 No. OCB439 REVISED EDITION-L
 Issued: Nov. 2014 No. OCB439 REVISED EDITION-K
 Issued: Mar. 2014 No. OCB439 REVISED EDITION-J
 Issued: Aug. 2012 No. OCB439 REVISED EDITION-H
 Issued: Jan. 2012 No. OCB439 REVISED EDITION-G
 Issued: Dec. 2011 No. OCB439 REVISED EDITION-F
 Issued: May. 2011 No. OCB439 REVISED EDITION-E
 Issued: Nov. 2009 No. OCB439 REVISED EDITION-D PDF 7
 Issued: Jun. 2009 No. OCB439 REVISED EDITION-C PDF 7
 Issued: Feb. 2009 No. OCB439 REVISED EDITION-B PDF 7
 Issued: Sep. 2008 No. OCB439 REVISED EDITION-A PDF 7
 Published: Apr. 2008 No. OCB439 PDF 8
 Made in Japan

Specifications are subject to change without notice.