

PARTS CATALOG

R410A

[Model Name]

[Service Ref.]

PUAZ-W85VHA2

PUHZ-W85VHA2.UK
PUHZ-W85VHA2R1.UK
PUHZ-W85VHA2R3.UK
PUHZ-W85VHA2R4.UK
PUHZ-W85VHA2R5.UK

PUAZ-W85VHA2-BS

PUHZ-W85VHA2-BS.UK
PUHZ-W85VHA2R1-BS.UK
PUHZ-W85VHA2R3-BS.UK
PUHZ-W85VHA2R4-BS.UK
PUHZ-W85VHA2R5-BS.UK

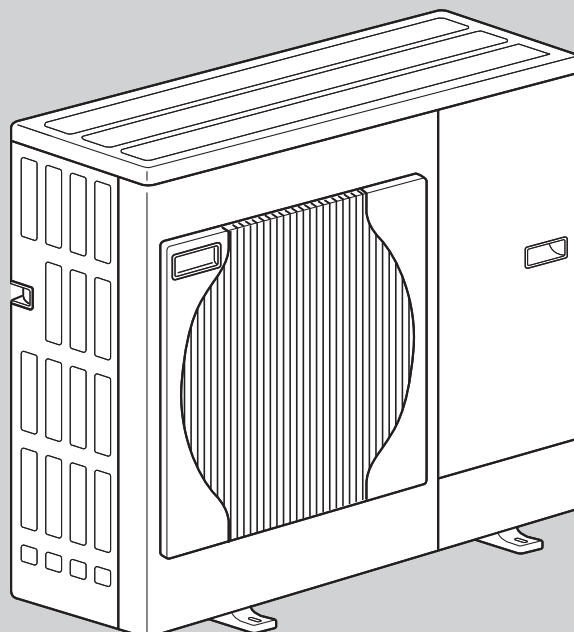
Revision:

- Added PUAZ-W85VHA2R5.UK and PUAZ-W85VHA2R5-BS.UK in REVISED EDITION-E.
- Some descriptions have been modified.

- Please void OCB465 REVISED EDITION-D.

Notes:

- This manual describes service data of outdoor unit only.
- RoHS compliant products have <G> mark on the spec name plate.


CONTENTS

1. RoHS PARTS LIST.....	2
2. OPTIONAL PARTS.....	6

SERVICE MANUAL (OCH465)

FUNCTIONAL AND ELECTRICAL PARTS

PUHZ-W85VHA2.UK

PUHZ-W85VHA2-BS.UK

PUHZ-W85VHA2R3.UK

PUHZ-W85VHA2R3-BS.UK

PUHZ-W85VHA2R5.UK

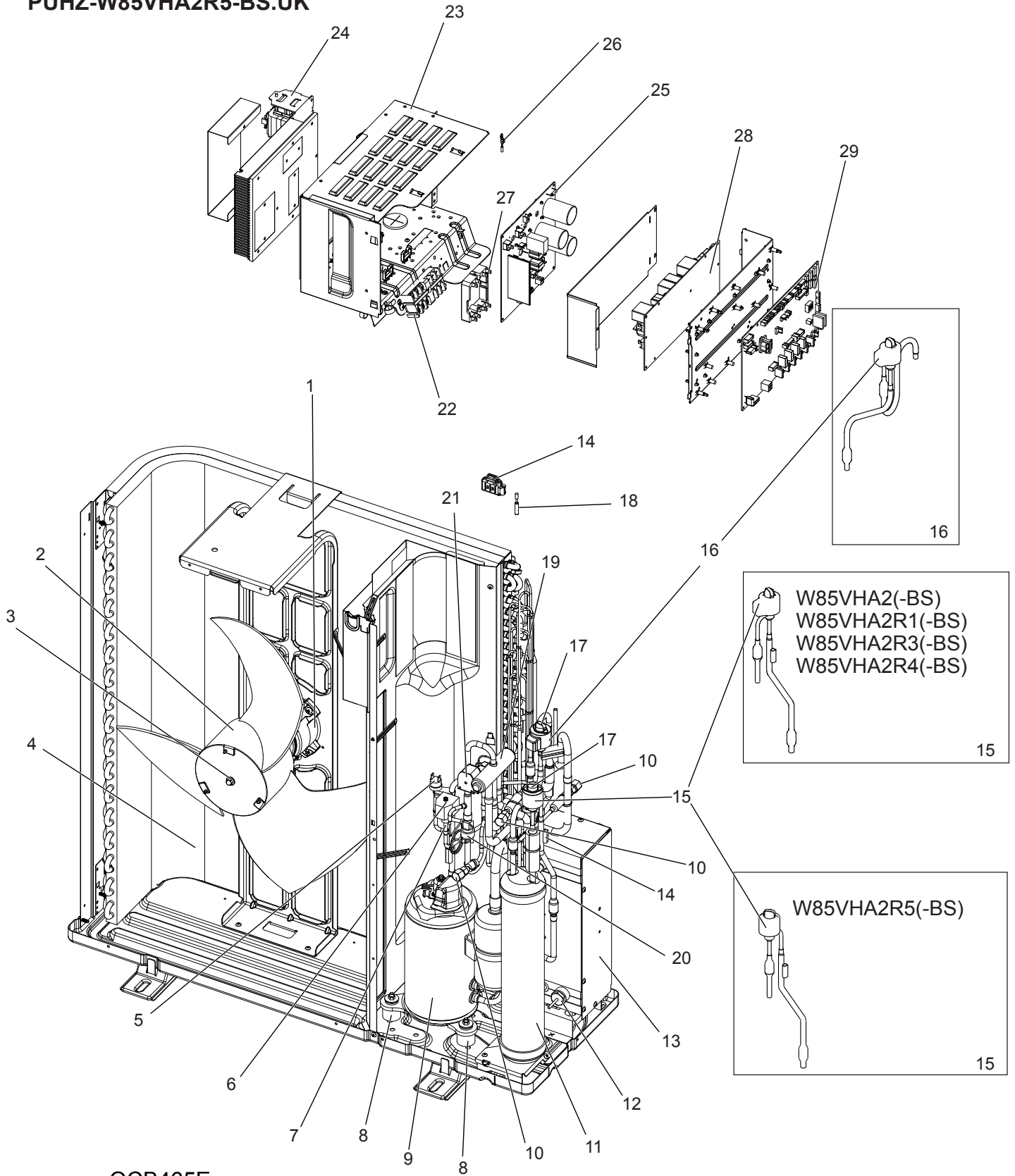
PUHZ-W85VHA2R5-BS.UK

PUHZ-W85VHA2R1.UK

PUHZ-W85VHA2R1-BS.UK

PUHZ-W85VHA2R4.UK

PUHZ-W85VHA2R4-BS.UK



OCB465E

RoHS PARTS LIST

Parts numbers that are circled are not shown in the figure.

No.	RoHS	Parts No.	Parts Name	Specification	Q'ty/unit										Wiring Diagram Symbol	
					PUHZ-											
					W85VHA2.UK	W85VHA2-BS.UK	W85VHA2R1.UK	W85VHA2R1-BS.UK	W85VHA2R3.UK	W85VHA2R3-BS.UK	W85VHA2R4.UK	W85VHA2R4-BS.UK	W85VHA2R5.UK	W85VHA2R5-BS.UK		
1	G	S70 E10 763	FAN MOTOR		1	1	1	1	1	1						MF1
	G	S70 E15 763	FAN MOTOR								1	1	1	1		MF1
2	G	S70 K04 115	PROPELLER FAN		1	1	1	1	1	1	1	1	1	1		
3	G	S70 K01 097	NUT		1	1	1	1	1	1	1	1	1	1		
4	G	S70 E75 408	HEAT EXCHANGER		1	1										
	G	S70 E85 408	HEAT EXCHANGER				1	1	1	1	1	1	1	1		
5	G	S70 E10 208	HIGH PRESSURE SWITCH		1	1	1	1	1	1	1	1	1	1		63H
6	G	S70 E04 242	BYPASS VALVE COIL		1	1	1	1	1	1	1	1	1	1		SV
7	G	S70 292 403	BYPASS VALVE		1	1	1	1	1	1	1	1	1	1		
8	G	S70 E01 004	RUBBER MOUNT		3	3	3	3	3	3	3	3	3	3		
9	G	S70 E85 400	COMPRESSOR	TNB220FLHM1T	1	1	1	1	1	1	1	1	1	1		MC
10	G	S70 E03 413	CHARGE PLUG		2	2	2	2	2	2	2	2	2	2		
	G	S70 E02 413	CHARGE PLUG		1	1	1	1	1	1	1	1	1	1		
11	G	S70 E85 440	POWER RECEIVER		1	1	1	1	1	1	1	1	1	1		
12	G	S70 E38 202	THERMISTOR (INLET WATER)		1	1										TH32
	G	S70 E48 202	THERMISTOR (INLET WATER)				1	1	1	1	1	1	1	1		TH32
13	G	S70 W75 408	PLATE HEAT EXCHANGER	ACH30-50	1	1										
	G	S70 W85 408	PLATE HEAT EXCHANGER	MWA1-44LM			1	1	1	1	1	1	1	1		
14	G	S70 E31 202	THERMISTOR (PLATE HEX LIQUID, AMBIENT)		1	1	1	1	1	1	1	1	1	1		TH6/TH7
15	G	S70 E86 402	LEV COIL	Connector: Red	1	1	1	1	1	1	1	1	1	1		LEV-B
16	G	S70 E85 402	LEV COIL	Connector: White	1	1	1	1	1	1	1	1	1	1		LEV-A
17	G	S70 E80 401	LEV		2	2	2	2	2	2	2	2	2	2		
18	G	S70 E32 202	THERMISTOR (OUTDOOR PIPE)		1	1	1	1	1	1	1	1	1	1		TH3
19	G	S70 E04 403	4 WAY VALVE		1	1	1	1	1	1	1	1	1	1		
20	G	S70 E11 208	HIGH PRESSURE SENSOR		1	1	1	1	1	1	1	1	1	1		63HS
21	G	S70 E01 242	4 WAY VALVE COIL		1	1	1	1	1	1	1	1	1	1		21S4
22	G	S70 E05 716	TERMINAL BLOCK	6P (L, N, ⊕, S1, S2, S3)	1	1	1	1	1	1	1	1	1	1		TB1
23	G	S70 E37 316	CONTROL BOX ASSY		1	1										
	G	S70 E48 316	CONTROL BOX ASSY				1	1								
	G	S70 R48 316	CONTROL BOX ASSY						1	1						
24	G	S70 K30 259	REACTOR		1	1	1	1	1	1	1	1	1	1		DCL
25	G	S70 0B4 313	POWER CIRCUIT BOARD		1	1										P.B.
	G	S70 0B9 313	POWER CIRCUIT BOARD				1	1	1	1	1	1	1	1		P.B.
26	G	S70 E30 202	THERMISTOR (HEAT SINK)		1	1	1	1	1	1	1	1	1	1		TH8
27	G	S70 E30 233	ACTIVE FILTER MODULE		1	1	1	1	1	1	1	1	1	1		ACTM
28	G	S70 E20 346	NOISE FILTER CIRCUIT BOARD		1	1	1	1	1	1	1	1	1	1		N.F.
29	G	S70 0B6 315	CONTROLLER CIRCUIT BOARD		1	1										C.B.
	G	S70 0B9 315	CONTROLLER CIRCUIT BOARD				1	1								C.B.
	G	S70 B19 315	CONTROLLER CIRCUIT BOARD						1	1						C.B.
	G	S70 B29 315	CONTROLLER CIRCUIT BOARD								1	1	1	1		C.B.
30	G	S70 E40 202	THERMISTOR (DISCHARGE)		1	1	1	1	1	1	1	1	1	1		TH4
31	G	S70 E39 202	SHELL THERMISTOR		1	1	1	1	1	1	1	1	1	1		TH33

RoHS PARTS LIST

STRUCTURAL PARTS

PUHZ-W85VHA2.UK

PUHZ-W85VHA2-BS.UK

PUHZ-W85VHA2R3.UK

PUHZ-W85VHA2R3-BS.UK

PUHZ-W85VHA2R5.UK

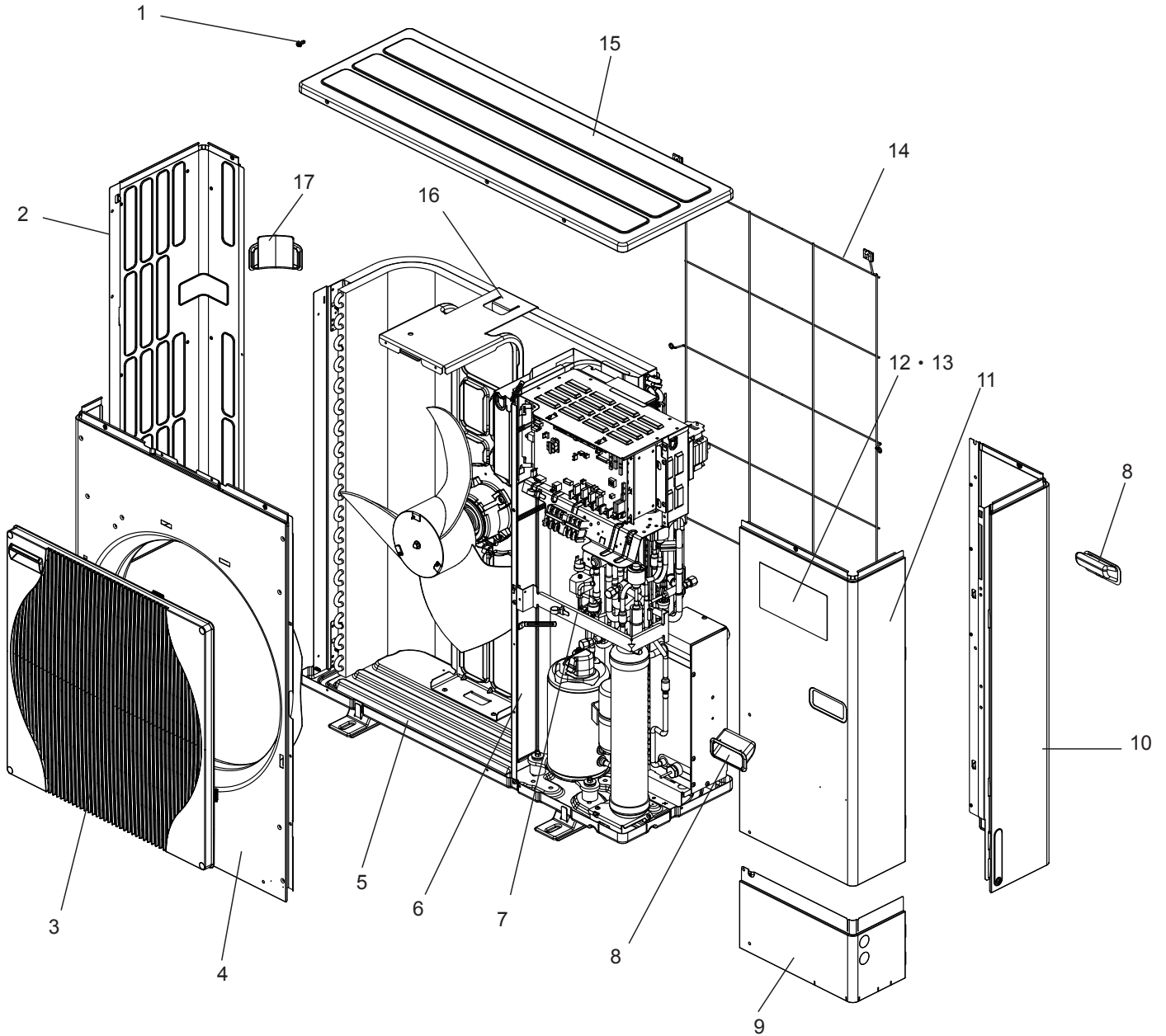
PUHZ-W85VHA2R5-BS.UK

PUHZ-W85VHA2R1.UK

PUHZ-W85VHA2R1-BS.UK

PUHZ-W85VHA2R4.UK

PUHZ-W85VHA2R4-BS.UK



RoHS PARTS LIST

No.	RoHS	Parts No.	Parts Name	Specification	Q'ty/unit										Remarks (Drawing No.)
					PUHZ-W85VHA2.UK	PUHZ-W85VHA2-BS.UK	PUHZ-W85VHA2R1.UK	PUHZ-W85VHA2R1-BS.UK	PUHZ-W85VHA2R3.UK	PUHZ-W85VHA2R3-BS.UK	PUHZ-W85VHA2R4.UK	PUHZ-W85VHA2R4-BS.UK	PUHZ-W85VHA2R5.UK	PUHZ-W85VHA2R5-BS.UK	
1	G	—	F.ST SCREW (5 × 12)	5×12	30	30	32	32	32	32	32	32	32	32	(DG12F536H12)
2	G	S70 E11 662	SIDE PANEL (L)		1										
	G	S70 E12 662	SIDE PANEL (L)			1									
	G	S70 E13 662	SIDE PANEL (L)				1	1		1		1			
	G	S70 E14 662	SIDE PANEL (L)					1		1		1		1	
3	G	S70 E30 675	FAN GRILLE		1	1	1	1	1	1	1	1	1	1	
4	G	S70 E30 668	FRONT PANEL		1		1		1		1		1		
	G	S70 E50 668	FRONT PANEL			1		1		1		1		1	
5	G	S70 E41 686	BASE ASSY		1		1		1						
	G	S70 E51 686	BASE ASSY			1		1		1					
	G	S70 E42 686	BASE ASSY								1		1		
	G	S70 E52 686	BASE ASSY									1		1	
6	G	—	SEPARATOR		1		1		1		1		1		(BK00C456G44)
	G	—	SEPARATOR			1		1		1		1		1	(BK00C456G39)
7	G	S71 VBA 850	VALVE BED ASSY (STAY)		1	1	1	1	1	1	1	1	1	1	
8	G	S70 30L 655	HANDLE		2	2	2	2	2	2	2	2	2	2	
9	G	S70 E60 658	COVER PANEL (FRONT)		1		1		1		1		1		
	G	S70 E70 658	COVER PANEL (FRONT)			1		1		1		1		1	
10	G	S70 E71 662	SIDE PANEL (R)		1		1		1		1		1		
	G	S70 E81 662	SIDE PANEL (R)			1		1		1		1		1	
11	G	S70 E50 661	SERVICE PANEL		1		1		1		1		1		
	G	S70 E70 661	SERVICE PANEL			1		1		1		1		1	
12	G	S70 E20 699	LABEL (MITSUBISHI)		1	1	1	1	1	1					
13	G	S70 E80 699	LABEL (MITSUBISHI)								1	1	1	1	
14	G	S70 E10 698	REAR GUARD		1	1	1	1	1	1	1	1	1	1	
15	G	S70 E20 641	TOP PANEL		1		1		1		1		1		
	G	S70 E30 641	TOP PANEL			1		1		1		1		1	
16	G	S70 E10 130	MOTOR SUPPORT		1		1		1						
	G	S70 E70 130	MOTOR SUPPORT			1		1		1					
	G	S70 E15 130	MOTOR SUPPORT								1		1		
	G	S70 E75 130	MOTOR SUPPORT									1		1	
17	G	S70 E10 655	HANDLE		1	1	1	1	1	1	1	1	1	1	

2

OPTIONAL PARTS

2-1. AIR OUTLET GUIDE

Parts No.	PAC-SG59SG-E
-----------	--------------

2-2. AIR GUIDE

Parts No.	PAC-SH63AG-E
-----------	--------------

2-3. DRAIN SOCKET

Parts No.	PAC-SG61DS-E
-----------	--------------

2-4. DRAIN PAN

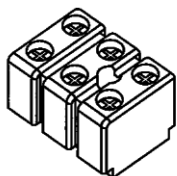
Parts No.	PAC-SG64DP-E
-----------	--------------

2-5. CONNECTOR FOR DRAIN HOSE HEATER

Parts No.	PAC-SE60RA-E
-----------	--------------

Contents

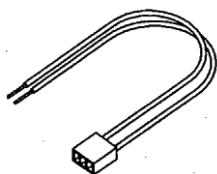
① Terminal block ×1



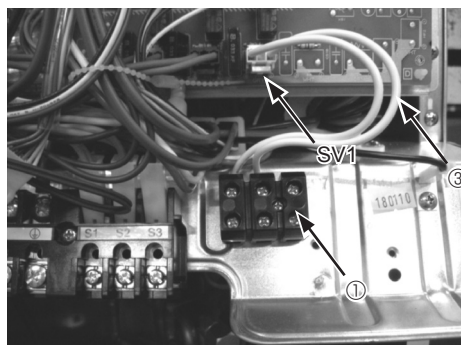
② Screw ×1



③ Lead wire with connector ×1



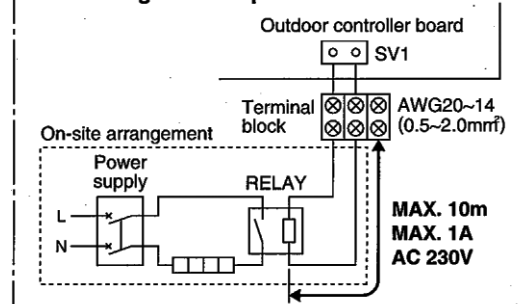
Installation



1. Attach the terminal block ①, with the screw ②.
2. Connect the lead wire ③ connector side to SV1 port on the outdoor controller board.
3. Connect the lead wire ③ to the terminal block ①.
4. Wire local cables for a drain hose heater RELAY to the terminal block ①.

- Drain hose heater RELAY connection only
- MAX current 1A

Circuit diagram example



SV1 on the controller board
 → Drain hose heater signal output
 With PAC-SE58RA-E
 From defrost start
 For 15 min. ON signal provided

MITSUBISHI ELECTRIC CORPORATION

HEAD OFFICE : TOKYO BLDG., 2-7-3, MARUNOUCHI, CHIYODA-KU, TOKYO 100-8310, JAPAN

©Copyright 2009 MITSUBISHI ELECTRIC CORPORATION
 Distributed in Nov. 2015 No. OCB465 REVISED EDITION-E
 Distributed in Aug. 2015 No. OCB465 REVISED EDITION-D
 Distributed in Nov. 2014 No. OCB465 REVISED EDITION-C
 Distributed in Mar. 2014 No. OCB465 REVISED EDITION-B
 Distributed in Oct. 2012 No. OCB465 REVISED EDITION-A
 Distributed in Aug. 2009 No. OCB465 PDF 6
 Made in Japan

New publication, effective Nov. 2015
 Specifications are subject to change without notice.