

SERVICE PARTS LIST FOR MITSUBISHI ELECTRIC PACKAGED AIR-CONDITIONERS

Series : PUHY-EP•Y(S)KM-A(-BS)

For use with the R410A

REVISED

May 2013

BWE01209A

INDEX

PUHY-EP200YKM-A
PUHY-EP200YKM-A-BS
PUHY-EP250YKM-A
PUHY-EP250YKM-A-BS
PUHY-EP300YKM-A
PUHY-EP300YKM-A-BS
PUHY-EP350YKM-A
PUHY-EP350YKM-A-BS
PUHY-EP400YKM-A
PUHY-EP400YKM-A-BS
PUHY-EP450YKM-A
PUHY-EP450YKM-A-BS

Refer to the next page for the package names.

Part information update day : **2013/05/15**

Please change the old catalog (issued Feb. 2013, No.BWE012090) to this new catalog.
Content of revision : Some of parts are changed. Added new models.

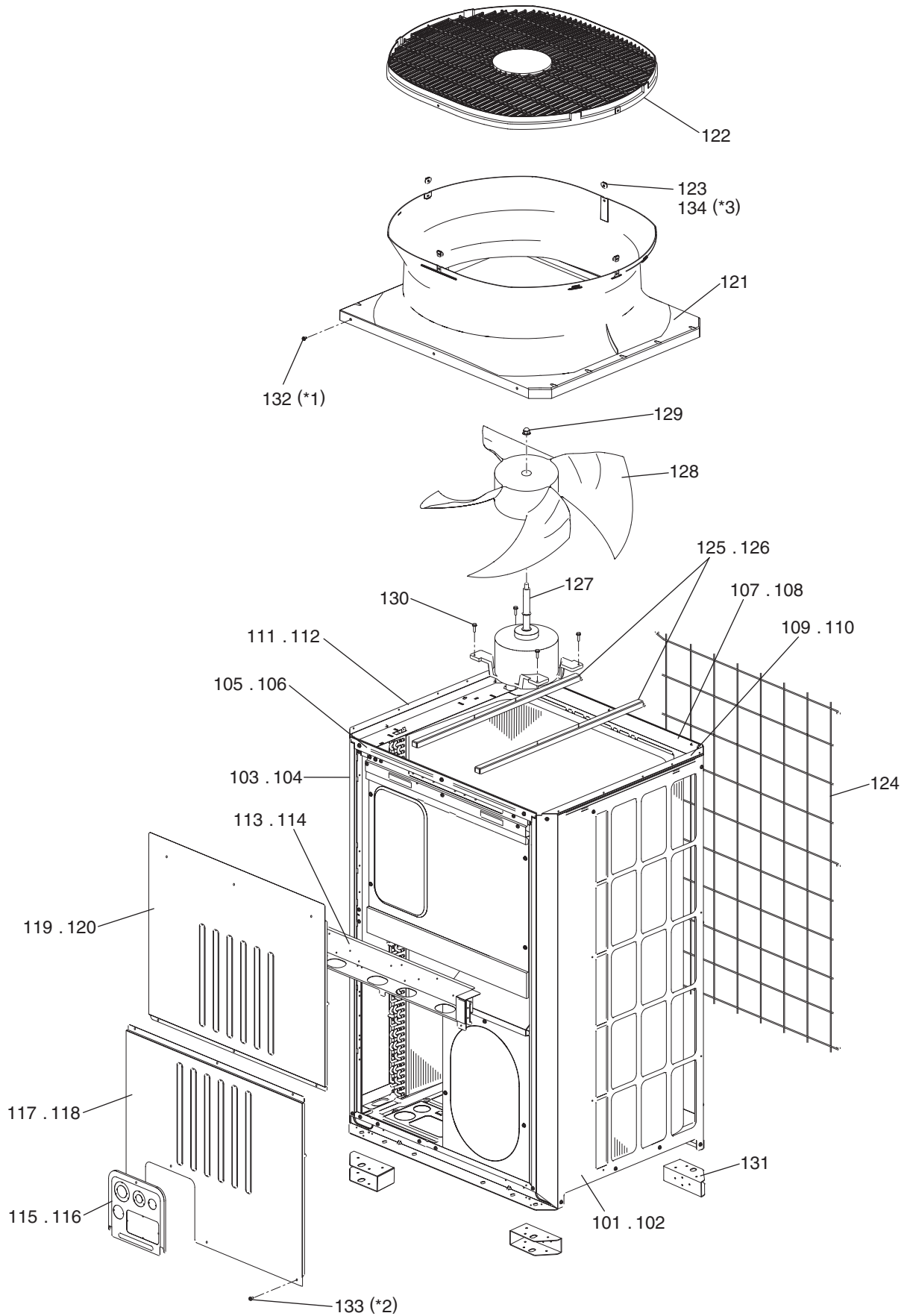


The Package name list

PUHY-EP400YSKM-A(-BS)	[PUHY-EP200YKM-A(-BS) + PUHY-EP200YKM-A(-BS)]
PUHY-EP450YSKM-A(-BS)	[PUHY-EP200YKM-A(-BS) + PUHY-EP250YKM-A(-BS)]
PUHY-EP500YSKM-A(-BS)	[PUHY-EP200YKM-A(-BS) + PUHY-EP300YKM-A(-BS)]
PUHY-EP550YSKM-A(-BS)	[PUHY-EP250YKM-A(-BS) + PUHY-EP300YKM-A(-BS)]
PUHY-EP600YSKM-A(-BS)	[PUHY-EP300YKM-A(-BS) + PUHY-EP300YKM-A(-BS)]
PUHY-EP650YSKM-A(-BS)	[PUHY-EP200YKM-A(-BS) + PUHY-EP200YKM-A(-BS) + PUHY-EP250YKM-A(-BS)]
PUHY-EP700YSKM-A(-BS)	[PUHY-EP200YKM-A(-BS) + PUHY-EP200YKM-A(-BS) + PUHY-EP300YKM-A(-BS)]
PUHY-EP750YSKM-A(-BS)	[PUHY-EP200YKM-A(-BS) + PUHY-EP250YKM-A(-BS) + PUHY-EP300YKM-A(-BS)]
PUHY-EP800YSKM-A(-BS)	[PUHY-EP200YKM-A(-BS) + PUHY-EP300YKM-A(-BS) + PUHY-EP300YKM-A(-BS)]
PUHY-EP850YSKM-A(-BS)	[PUHY-EP250YKM-A(-BS) + PUHY-EP300YKM-A(-BS) + PUHY-EP300YKM-A(-BS)]
PUHY-EP900YSKM-A(-BS)	[PUHY-EP300YKM-A(-BS) + PUHY-EP300YKM-A(-BS) + PUHY-EP300YKM-A(-BS)]

Added new models

PUHY-EP350YKM-A(-BS):Added May 2013
PUHY-EP400YKM-A(-BS):Added May 2013
PUHY-EP450YKM-A(-BS):Added May 2013

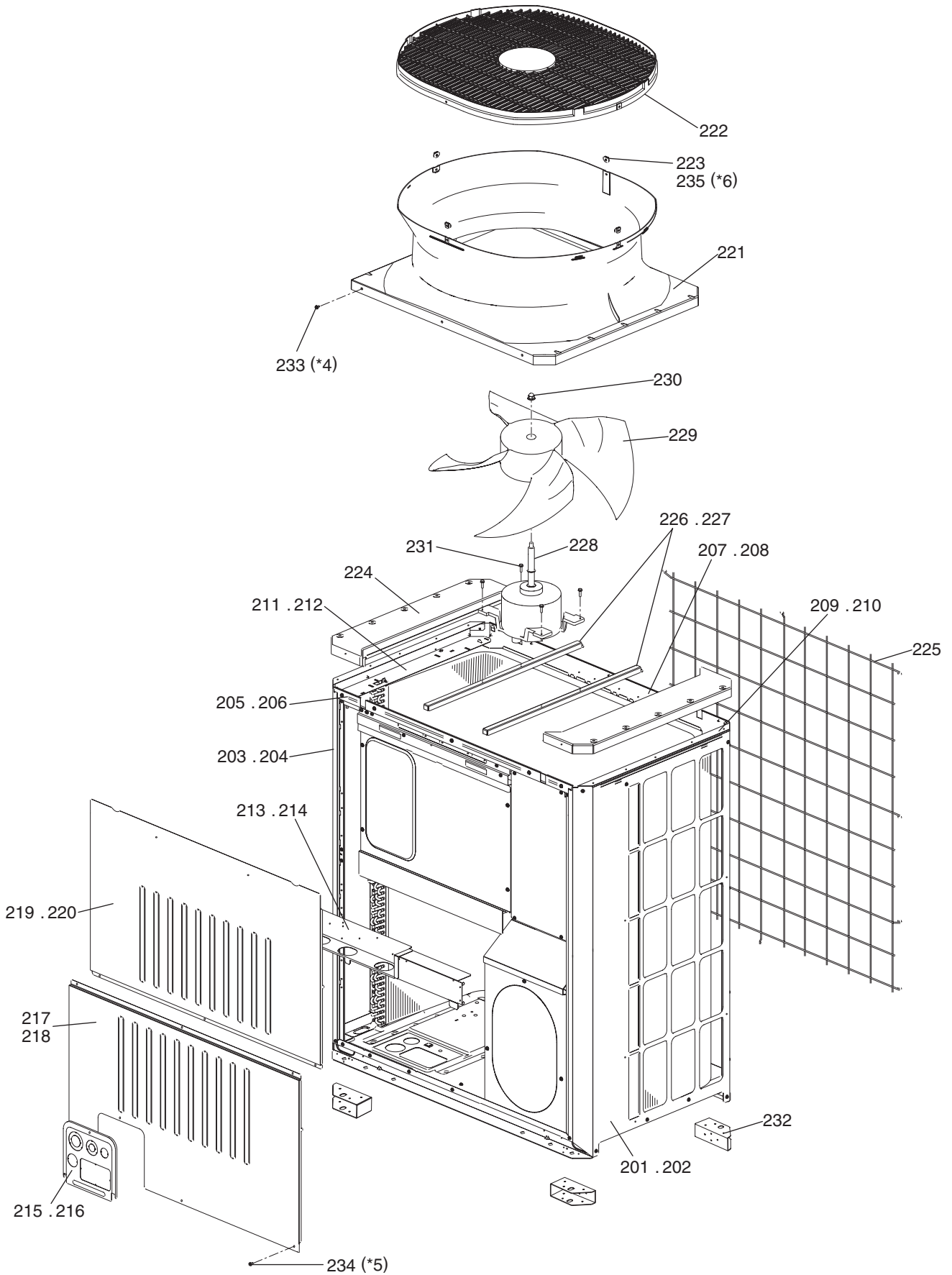


- *1 46 WFT Screws (part No.132)
- *2 87 H Screws (part No.133)
- *3 4 WFT Screws (part No.134)

PUHY-EP200YKM-A
PUHY-EP200YKM-A-BS

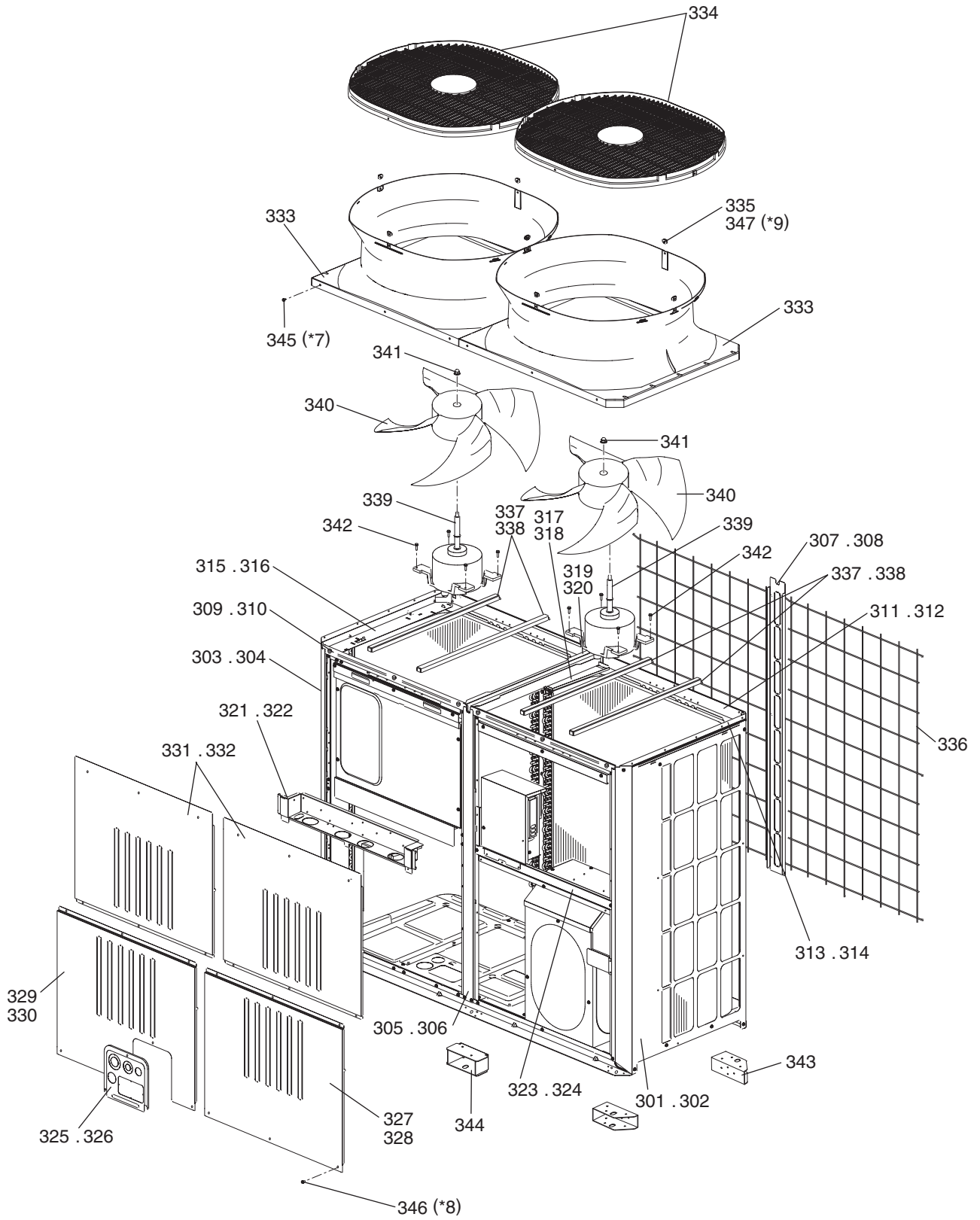
EXTERNAL PARTS & BLOWER PARTS (1)

No.	Part No.	G : RoHS Apply Only W : RoHS Apply by Running Change		Spec.	PUHY-EP200YKM-A	PUHY-EP200YKM-A-BS					Dwg. No.	Notes for the models	Revision info.
			Part Name										
101	R61 042 661	G	Panel R		1							KB02A370G03	
102	R61 041 661	G	Panel R	BS	1							KB02A370G04	
103	R61 206 651	G	Panel L		1							KB02A369G05	
104	R61 207 651	G	Panel L	BS	1							KB02A369G06	
105	R61 001 161	G	Frame F		1							KD02G738H02	
106	R61 002 161	G	Frame F	BS	1							KD02G738G03	
107	R63 078 162	G	Frame assy B		1							KD00L022G07	
108	R63 079 162	G	Frame assy B	BS	1							KD00L022G08	
109	R61 071 162	G	Frame assy LR		1							KD00L021G03	
110	R61 070 162	G	Frame assy LR	BS	1							KD00L021G04	
111	R61 069 162	G	Frame assy L		1							KD00L149G03	
112	R61 068 162	G	Frame assy L	BS	1							KD00L149G04	
113	R63 077 162	G	Frame assy M		1							KD00L159G07	
114	R63 080 162	G	Frame assy M	BS	1							KD00L159G08	
115	R61 095 690	G	Piping cover		1							KB02L001G07	
116	R61 094 690	G	Piping cover	BS	1							KB02L001G08	
117	R61 208 651	G	Panel FB		1							KB02J835H06	
118	R61 209 651	G	Panel FB	BS	1							KB02J835G10	
119	R61 177 651	G	Panel FU		1							KB02J839H01	
120	R61 178 651	G	Panel FU	BS	1							KB02J839G02	
121	R61 004 119	G	Bell mouth		1	1						KB25A368H03	
122	R61 007 118	G	Fan guard		1	1						KB25J857H04	
123	R61 009 669	G	Plate fan guard		4	4						KD02D205H02	
124	R63 008 611	G	Fin guard B		1	1						KB07N273G01	
125	R61 016 140	G	Base fan		2							KD02D026H01	
126	R61 017 140	G	Base fan	BS	2							KD02D026G03	
127	R61 167 220	G	Motor	L-920-B4-1 Y AC380-400-920W	1	1						P780225X01	
128	R63 4H6 300	G	Fan		1	1						KB25A009H03	
129	R63 4H6 122	G	Box nut	M12 CH	1	1						P552000X01	
130	R61 028 087	G	Upset screw	M6 x 22	4	4						P516049X01	
131	R61 016 130	G	Attachment leg		4	4						KD02T773G01	
132	R63 006 087	G	WFT screw	M5 x 12 (30pcs)	2	2						KB00H418G01	*1
133	R63 007 087	G	H screw	M5 x 10 KNURLED (30pcs)	3	3						KB00H418G14	*2
134	R63 029 087	G	WFT screw	M5 x 16 (10pcs)	1	1						KD00H026G01	*3



- *4 54 WFT Screws (part No.233)
- *5 91 H Screws (part No.234)
- *6 4 WFT Screws (part No.235)

No.	Part No.	G : RoHS Apply Only W : RoHS Apply by Running Change		Spec.	PUHY-EP250YKM-A	PUHY-EP250YKM-A-BS					Dwg. No.	Notes for the models	Revision info.
			Part Name										
201	R61 042 661	G	Panel R		1						KB02A370G03		
202	R61 041 661	G	Panel R	BS		1					KB02A370G04		
203	R61 206 651	G	Panel L		1						KB02A369G05		
204	R61 207 651	G	Panel L	BS		1					KB02A369G06		
205	R61 003 161	G	Frame F		1						KD02G739H02		
206	R61 004 161	G	Frame F	BS		1					KD02G739G03		
207	R61 081 162	G	Frame assy B		1						KD00L213G07		
208	R61 082 162	G	Frame assy B	BS		1					KD00L213G08		
209	R61 071 162	G	Frame assy LR		1						KD00L021G03		
210	R61 070 162	G	Frame assy LR	BS		1					KD00L021G04		
211	R61 069 162	G	Frame assy L		1						KD00L149G03		
212	R61 068 162	G	Frame assy L	BS		1					KD00L149G04		
213	R61 083 162	G	Frame assy M		1						KD00L235G04		
214	R61 084 162	G	Frame assy M	BS		1					KD00L235G05		
215	R61 095 690	G	Piping cover		1						KB02L001G07		
216	R61 094 690	G	Piping cover	BS		1					KB02L001G08		
217	R61 210 651	G	Panel FB		1						KB02J836H03		
218	R61 211 651	G	Panel FB	BS		1					KB02J836G05		
219	R61 185 651	G	Panel FU		1						KB02J840H01		
220	R61 186 651	G	Panel FU	BS		1					KB02J840G02		
221	R61 004 119	G	Bell mouth		1	1					KB25A368H03		
222	R61 007 118	G	Fan guard		1	1					KB25J857H04		
223	R61 009 669	G	Plate fan guard		4	4					KD02D205H02		
224	R61 008 118	G	Fan guard cover		2	2					KB25J827H03		
225	R61 009 611	G	Fin guard B		1	1					KB07N274G01		
226	R61 016 140	G	Base fan		2						KD02D026H01		
227	R61 017 140	G	Base fan	BS		2					KD02D026G03		
228	R61 167 220	G	Motor	L-920-B4-1 Y AC380-400-920W	1	1					P780225X01		
229	R63 4H6 300	G	Fan		1	1					KB25A009H03		
230	R63 4H6 122	G	Box nut	M12 CH	1	1					P552000X01		
231	R61 028 087	G	Upset screw	M6 x 22	4	4					P516049X01		
232	R61 016 130	G	Attachment leg		4	4					KD02T773G01		
233	R63 006 087	G	WFT Screw	M5 x 12 (30pcs)	2	2					KB00H418G01	*4	
234	R63 007 087	G	H Screw	M5 x 10 KNURLED (30pcs)	4	4					KB00H418G14	*5	
235	R63 029 087	G	WFT Screw	M5 x 16 (10pcs)	1	1					KD00H026G01	*6	



*7 68 WFT Screws (part No.345)
 *8 138 H Screws (part No.346)
 *9 8 WFT Screws (part No.347)

No.	Part No.	G : RoHS Apply Only W : RoHS Apply by Running Change	Part Name	Spec.	PUHY-EP300YKM-A	PUHY-EP350YKM-A-BS	PUHY-EP350YKM-A	PUHY-EP350YKM-A-BS	PUHY-EP400YKM-A	PUHY-EP400YKM-A-BS	Dwg. No.	Notes for the models	Revision info.
301	R61 042 661	G	Panel R		1		1		1		KB02A370G03		
302	R61 041 661	G	Panel R	BS		1		1		1	KB02A370G04		
303	R61 206 651	G	Panel L		1		1		1		KB02A369G05		
304	R61 207 651	G	Panel L	BS		1		1		1	KB02A369G06		
305	R61 022 626	G	Pillar assy MF		1		1		1		KD00R845G07		
306	R61 023 626	G	Pillar assy MF	BS		1		1		1	KD00R845G08		
307	R61 020 626	G	Pillar MB		1		1		1		KB02J843G01		
308	R61 019 626	G	Pillar MB	BS		1		1		1	KB02J843G02		
309	R61 061 162	G	Frame assy F		1		1		1		KD00L182G03		
310	R61 060 162	G	Frame assy F	BS		1		1		1	KD00L182G05		
311	R61 085 162	G	Frame assy B		1		1		1		KD00L073G07		
312	R61 086 162	G	Frame assy B	BS		1		1		1	KD00L073G08		
313	R61 071 162	G	Frame assy LR		1		1		1		KD00L021G03		
314	R61 070 162	G	Frame assy LR	BS		1		1		1	KD00L021G04		
315	R61 069 162	G	Frame assy L		1		1		1		KD00L149G03		
316	R61 068 162	G	Frame assy L	BS		1		1		1	KD00L149G04		
317	R61 003 499	G	Plate HEX assy		1		1		1		KB00T714G01		
318	R61 004 499	G	Plate HEX assy	BS		1		1		1	KB00T714G02		
319	R61 072 162	G	Frame MT		1		1		1		KB02J833H01		
320	R61 073 162	G	Frame MT	BS		1		1		1	KB02J833G01		
321	R63 087 162	G	Frame M assy		1		1		1		KD00L159G09		
322	R63 088 162	G	Frame M assy	BS		1		1		1	KD00L159G10		
323	R61 058 162	G	Frame MR		1		1		1		KD02G743H04		
324	R61 059 162	G	Frame MR	BS		1		1		1	KD02G743G02		
325	R61 095 690	G	Piping cover		1		1		1		KB02L001G07		
326	R61 094 690	G	Piping cover	BS		1		1		1	KB02L001G08		
327	R61 212 651	G	Panel FBR		1		1		1		KB02J838H04		
328	R61 213 651	G	Panel FBR	BS		1		1		1	KB02J838G06		
329	R61 182 651	G	Panel FBL		1		1		1		KB02J837H02		
330	R61 183 651	G	Panel FBL	BS		1		1		1	KB02J837G04		
331	R61 177 651	G	Panel FU		2		2		2		KB02J839H01		
332	R61 178 651	G	Panel FU	BS		2		2		2	KB02J839G02		
333	R61 005 119	G	Bell mouth		2	2	2	2	2	2	KB25A367H03		
334	R61 007 118	G	Fan guard		2	2	2	2	2	2	KB25J857H04		
335	R61 009 669	G	Plate Fan guard		8	8	8	8	8	8	KD02D205H02		
336	R61 010 611	G	Fin guard B		2	2	2	2	2	2	KB07N272G01		
337	R61 016 140	G	Base fan		4		4		4		KD02D026H01		
338	R61 017 140	G	Base fan	BS		4		4		4	KD02D026G03		
339	R61 167 220	G	Motor	L-920-B4-1 Y AC380-400-920W	2	2	2	2	2	2	P780225X01		
340	R63 4H6 300	G	Fan		2	2	2	2	2	2	KB25A009H03		
341	R63 4H6 122	G	Box nut	M12 CH	2	2	2	2	2	2	P552000X01		
342	R61 028 087	G	Upset Screw	M6 x 22	8	8	8	8	8	8	P516049X01		
343	R61 016 130	G	Attachment leg		4	4	4	4	4	4	KD02T773G01		
344	R61 025 130	G	Attachment leg	XL	2	2	2	2	2	2	KD02T774G01		
345	R63 006 087	G	WFT Screw	M5 x 12 (30pcs)	3	3	3	3	3	3	KB00H418G01	*7	

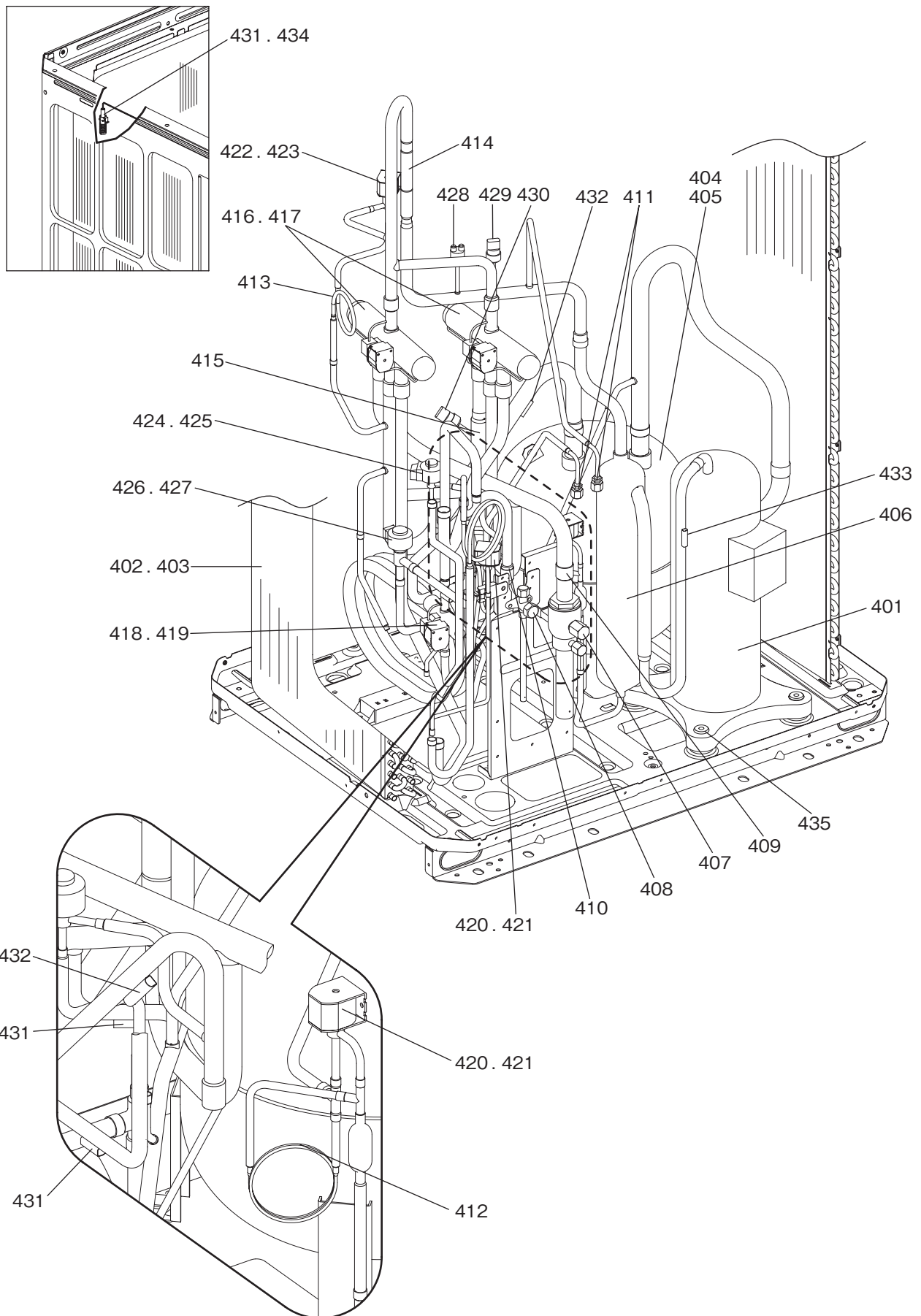
PUHY-EP300,EP350YKM-A(-BS)
PUHY-EP400,EP450YKM-A(-BS)

EXTERNAL PARTS & BLOWER PARTS (3)

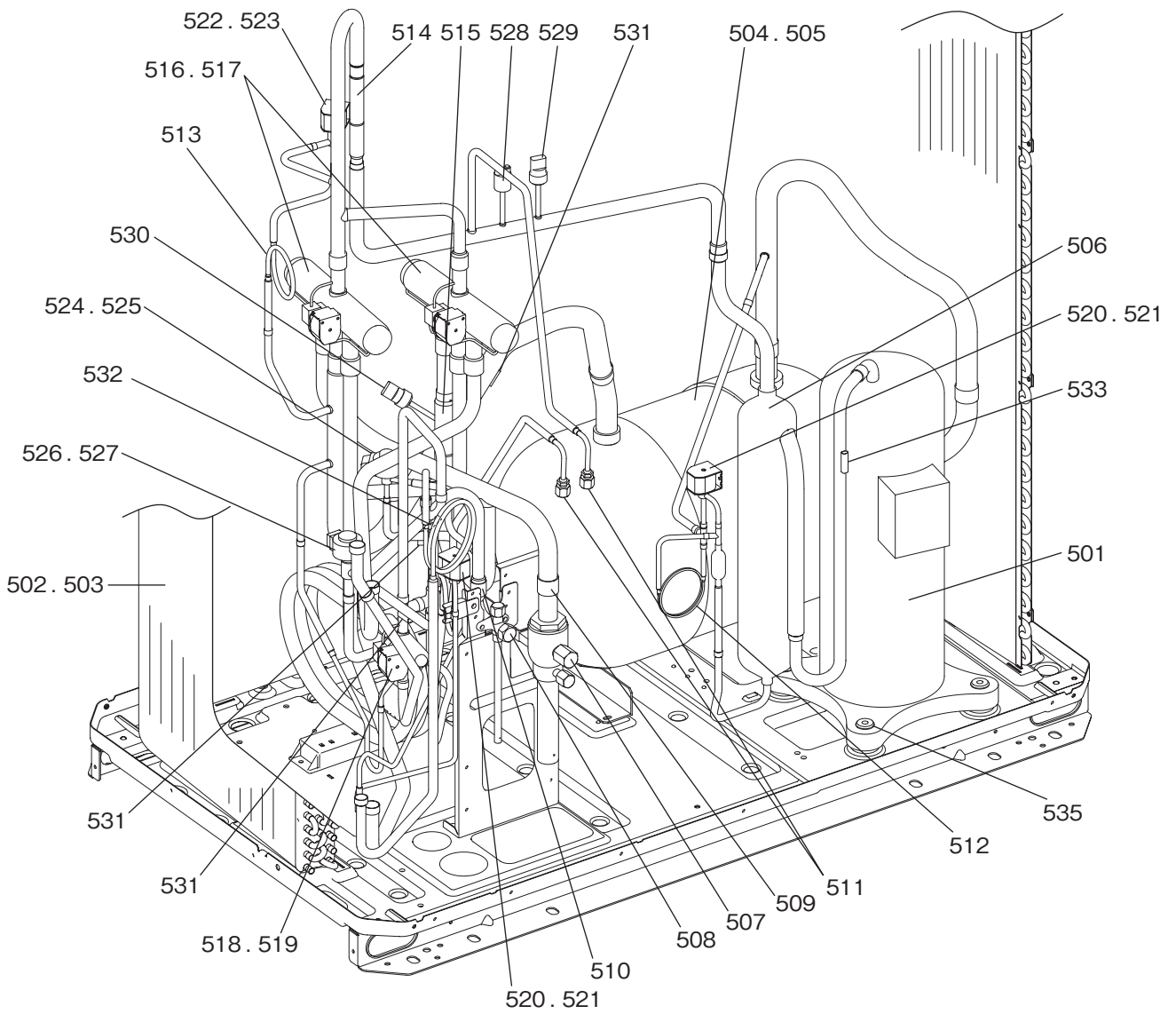
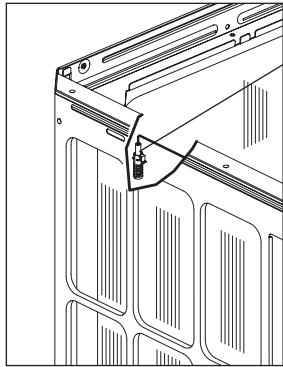
No.	Part No.	G : RoHS Apply Only W : RoHS Apply by Running Change		Spec.	PUHY-EP300YKM-A	PUHY-EP350YKM-A(-BS)	PUHY-EP350YKM-A	PUHY-EP350YKM-A(-BS)	PUHY-EP400YKM-A	PUHY-EP450YKM-A(-BS)	Dwg. No.	Notes for the models	Revision info.
			Part Name										
346	R63 007 087	G	H Screw	M5 x 10 KNURLED (30pcs)	5	5	5	5	5	5	KB00H418G14	*8	
347	R63 029 087	G	WFT Screw	M5 x 16 (10pcs)	1	1	1	1	1	1	KD00H026G01	*9	

No.	Part No.	G : RoHS Apply Only W : RoHS Apply by Running Change		Spec.	PUHY-EP450YKM-A	PUHY-EP400YKM-A-BS					Dwg. No.	Notes for the models	Revision info.
			Part Name										
301	R61 042 661	G	Panel R		1						KB02A370G03		
302	R61 041 661	G	Panel R	BS		1					KB02A370G04		
303	R61 206 651	G	Panel L		1						KB02A369G05		
304	R61 207 651	G	Panel L	BS		1					KB02A369G06		
305	R61 022 626	G	Pillar assy MF		1						KD00R845G07		
306	R61 023 626	G	Pillar assy MF	BS		1					KD00R845G08		
307	R61 020 626	G	Pillar MB		1						KB02J843G01		
308	R61 019 626	G	Pillar MB	BS		1					KB02J843G02		
309	R61 061 162	G	Frame assy F		1						KD00L182G03		
310	R61 060 162	G	Frame assy F	BS		1					KD00L182G05		
311	R61 085 162	G	Frame assy B		1						KD00L073G07		
312	R61 086 162	G	Frame assy B	BS		1					KD00L073G08		
313	R61 071 162	G	Frame assy LR		1						KD00L021G03		
314	R61 070 162	G	Frame assy LR	BS		1					KD00L021G04		
315	R61 069 162	G	Frame assy L		1						KD00L149G03		
316	R61 068 162	G	Frame assy L	BS		1					KD00L149G04		
317	R61 003 499	G	Plate HEX assy		1						KB00T714G01		
318	R61 004 499	G	Plate HEX assy	BS		1					KB00T714G02		
319	R61 072 162	G	Frame MT		1						KB02J833H01		
320	R61 073 162	G	Frame MT	BS		1					KB02J833G01		
321	R63 087 162	G	Frame M assy		1						KD00L159G09		
322	R63 088 162	G	Frame M assy	BS		1					KD00L159G10		
323	R61 058 162	G	Frame MR		1						KD02G743H04		
324	R61 059 162	G	Frame MR	BS		1					KD02G743G02		
325	R61 095 690	G	Piping cover		1						KB02L001G07		
326	R61 094 690	G	Piping cover	BS		1					KB02L001G08		
327	R61 212 651	G	Panel FBR		1						KB02J838H04		
328	R61 213 651	G	Panel FBR	BS		1					KB02J838G06		
329	R61 182 651	G	Panel FBL		1						KB02J837H02		
330	R61 183 651	G	Panel FBL	BS		1					KB02J837G04		
331	R61 177 651	G	Panel FU		2						KB02J839H01		
332	R61 178 651	G	Panel FU	BS		2					KB02J839G02		
333	R61 005 119	G	Bell mouth		2	2					KB25A367H03		
334	R61 007 118	G	Fan guard		2	2					KB25J857H04		
335	R61 009 669	G	Plate Fan guard		8	8					KD02D205H02		
336	R61 010 611	G	Fin guard B		2	2					KB07N272G01		
337	R61 016 140	G	Base fan		4						KD02D026H01		
338	R61 017 140	G	Base fan	BS		4					KD02D026G03		
339	R61 167 220	G	Motor	L-920-B4-1 Y AC380-400-920W	2	2					P780225X01		
340	R63 4H6 300	G	Fan		2	2					KB25A009H03		
341	R63 4H6 122	G	Box nut	M12 CH	2	2					P552000X01		
342	R61 028 087	G	Upset Screw	M6 x 22	8	8					P516049X01		
343	R61 016 130	G	Attachment leg		4	4					KD02T773G01		
344	R61 025 130	G	Attachment leg	XL	2	2					KD02T774G01		
345	R63 006 087	G	WFT Screw	M5 x 12 (30pcs)	3	3					KB00H418G01	*7	

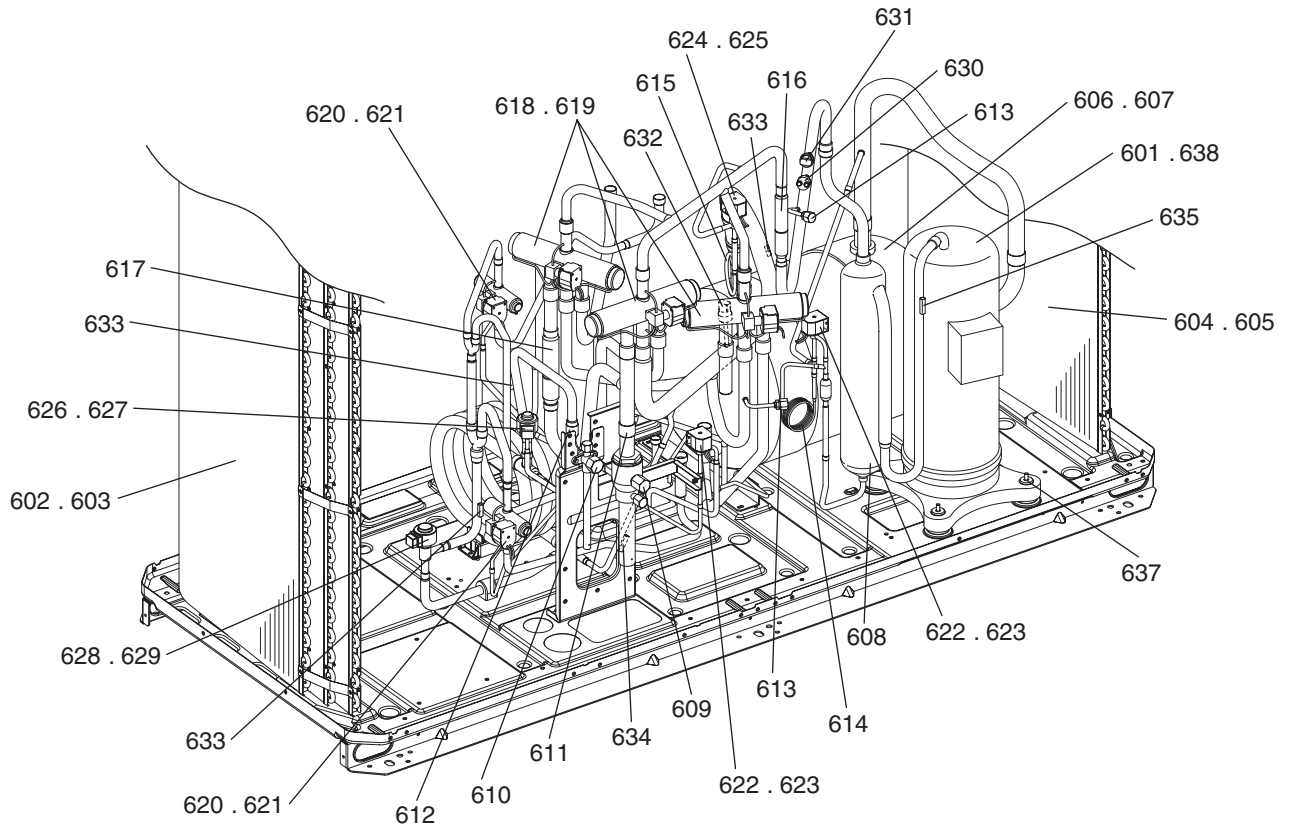
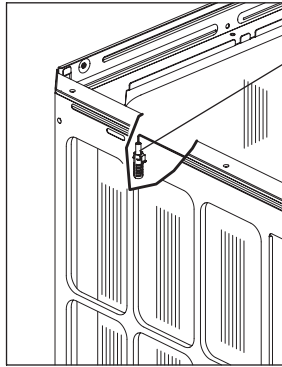
No.	Part No.	G : RoHS Apply Only W : RoHS Apply by Running Change		Spec.	PUHY-EP450YKM-A	PUHY-EP450YKM-A-BS					Dwg. No.	Notes for the models	Revision info.
			Part Name										
346	R63 007 087	G	H Screw	M5 x 10 KNURLED (30pcs)	5	5						KB00H418G14 *8	
347	R63 029 087	G	WFT Screw	M5 x 16 (10pcs)	1	1						KD00H026G01 *9	



No.	Part No.	G : RoHS Apply Only W : RoHS Apply by Running Change	Part Name	Spec.	PUHY-EP200YKM-A PUHY-EP200YKM-A-BS						Dwg. No.	Notes for the models	Revision info.
402	R63 638 480	G	Heat exchanger	3L	1						KD01R785G01		
403	R63 639 480	G	Heat exchanger	3L BS		1					KD01R785G02		
404	R61 075 484	G	Accumulator assy		1						KB54B478G13		
405	R61 076 484	G	Accumulator assy	BS		1					KB54B478G14		
406	R61 032 487	G	Oil separator assy		1	1					KD00R796G01		
407	R61 009 410	G	Ball valve	JA10YGME 4.15MPa D25	1	1					P636358X01	<BV1>	
408	R61 003 540	G	Valve	VSAMH3SSCM-LA1	1	1					P636346X01	<BV2>	
409	R61 008 454	G	Strainer	25.4D	1	1					KB48K250G01	<ST1>	
410	R63 Y03 454	G	Strainer	17.6D	1	1					W893281G01	<ST2>	
411	R61 004 413	G	Check joint L	R410A	2	2					P666013X01	<(HP)CJ1,(LP)CJ2>	
412	R63 002 425	G	Capillary tube assy		1	1					KB49F229G01	<CP1>	
413	R63 021 425	G	Capillary tube		1	1					KD49D414G01	<CP2>	
414	R61 005 418	G	Check valve	YAV R410A CV3.5	1	1					P633133X01	<CV1>	
415	R61 003 418	G	Check valve	LCVP157M CV8.5	1	1					P639180X01	<CV2>	
416	R63 Y05 154	G	Four way valve	STF-07	2	2					P633119X01	<21S4a,21S4b>	
417	R63 Y16 243	G	Four way valve coil	STF-01 220-240V	2	2					P472024X01	<21S4a,21S4b>	
418	R63 004 421	G	Two way valve	VR43202 CV 7.4 OFF-OPEN	1	1					P633129X01	<SV5b>	
419	R63 031 243	G	Two way valve coil	SQ-240V L1500	1	1					P472085X01	<SV5b>	
420	R63 046 232	G	Solenoid valve	FDF2A77 SV CV0.07	2	2					P631312X01	<SV1a,SV9>	
421	R63 032 243	G	Solenoid valve coil	FQG625 240V L1500	2	2					P472070X01	<SV1a,SV9>	
422	R63 001 921	G	Solenoid valve	VPV R410A	1	1					P631295X01	<SV2>	
423	R61 015 243	G	Solenoid valve coil	VPV Y2 AC220V-240V 50Hz	1	1					P472048X01	<SV2>	
424	R63 4H6 401	G	Linear expansion valve	CAM35-S R410A	1	1					P632444X01	<LEV1>	
425	R63 011 401	G	Solenoid valve coil	DC12V D17.35 POLE6	1	1					P472059X02	<LEV1>	
426	R61 036 401	G	Linear expansion valve	CV 20TON(PAM)	1	1					P632504X01	<LEV2>	
427	R61 022 243	G	Solenoid valve coil	PAM DC12V 6POLE	1	1					P472061X02	<LEV2>	
428	R63 Y11 208	G	Pressure switch	ACB1UB28W	1	1					P426320X01	<63H1>	
429	R63 049 288	G	Pressure sensor	HP	1	1					KB00H904G20	<63HS1>	
430	R63 050 288	G	Pressure sensor	LP	1	1					KB00H904G21	<63LS>	
431	R61 060 200	G	Thermistor	CHIP TH. 15k	3	3					P418065X01	<TH2,TH3,TH7>	
432	R63 172 200	G	Thermistor	8D-2500L R0/15k B0/3465K	2	2					P418098X01	<TH5,TH6>	
433	R63 911 202	G	Thermistor		1	1					P425416X02	<TH4>	
434	R61 001 310	G	Sensor holder		1	1					KB25B471H03		
435	R63 852 860	G	Rubber mount		4	4					W897574H01	For compressor	



No.	Part No.	G : RoHS Apply Only W : RoHS Apply by Running Change		Spec.	PUHY-EP250YKM-A	PUHY-EP250YKM-A-BS				Dwg. No.	Notes for the models	Revision info.
			Part Name									
501	R69 103 478	G	Scroll compressor	HNB62FB-YE(S)	1	1				EP10132B04		
502	R61 640 480	G	Heat exchanger	3L	1					KD01R776G01		
503	R61 641 480	G	Heat exchanger	3L BS		1				KD01R776G02		
504	R61 118 484	G	Accumulator assy		1					KB54B479G33		
505	R61 119 484	G	Accumulator assy	BS		1				KB54B479G34		
506	R61 032 487	G	Oil separator assy		1	1				KD00R796G01		
507	R61 009 410	G	Ball valve	JA10YGME 4.15MPa D25	1	1				P636358X01	<BV1>	
508	R61 003 540	G	Valve	VSAMH3SSCM-LA1	1	1				P636346X01	<BV2>	
509	R61 008 454	G	Strainer	25.4D	1	1				KB48K250G01	<ST1>	
510	R63 Y03 454	G	Strainer	17.6D	1	1				W893281G01	<ST2>	
511	R61 004 413	G	Check joint L	R410A	2	2				P666013X01	<(HP)CJ1,(LP)CJ2>	
512	R63 002 425	G	Capillary tube assy		1	1				KB49F229G01	<CP1>	
513	R63 021 425	G	Capillary tube		1	1				KD49D414G01	<CP2>	
514	R61 005 418	G	Check valve	YAV R410A CV3.5	1	1				P633133X01	<CV1>	
515	R61 003 418	G	Check valve	LCVP157M CV8.5	1	1				P639180X01	<CV2>	
516	R63 Y05 154	G	Four way valve	STF-07	2	2				P633119X01	<21S4a,21S4b>	
517	R63 Y16 243	G	Four way valve coil	STF-01 220-240V	2	2				P472024X01	<21S4a,21S4b>	
518	R63 004 421	G	Two way valve	VR43202 CV 7.4 OFF-OPEN	1	1				P633129X01	<SV5b>	
519	R63 031 243	G	Two way valve coil	SQ-240V L1500	1	1				P472085X01	<SV5b>	
520	R63 046 232	G	Solenoid valve	FDF2A77 SV CV0.07	2	2				P631312X01	<SV1a,SV9>	
521	R63 032 243	G	Solenoid valve coil	FQG625 240V L1500	2	2				P472070X01	<SV1a,SV9>	
522	R63 001 921	G	Solenoid valve	VPV R410A	1	1				P631295X01	<SV2>	
523	R61 015 243	G	Solenoid valve coil	VPV Y2 AC220V-240V 50Hz	1	1				P472048X01	<SV2>	
524	R63 4H6 401	G	Linear expansion valve	CAM35-S R410A	1	1				P632444X01	<LEV1>	
525	R63 011 401	G	Solenoid valve coil	DC12V D17.35 POLE6	1	1				P472059X02	<LEV1>	
526	R61 036 401	G	Linear expansion valve	CV 20TON(PAM)	1	1				P632504X01	<LEV2>	
527	R61 022 243	G	Solenoid valve coil	PAM DC12V 6POLE	1	1				P472061X02	<LEV2>	
528	R63 Y11 208	G	Pressure switch	ACB1UB28W	1	1				P426320X01	<63H1>	
529	R63 049 288	G	Pressure sensor	HP	1	1				KB00H904G20	<63HS1>	
530	R63 050 288	G	Pressure sensor	LP	1	1				KB00H904G21	<63LS>	
531	R61 060 200	G	Thermistor	CHIP TH. 15k	4	4				P418065X01	<TH2,TH3,TH5,TH7>	
532	R63 172 200	G	Thermistor	8D-2500L R0/15k B0/3465K	1	1				P418098X01	<TH6>	
533	R63 911 202	G	Thermistor		1	1				P425416X02	<TH4>	
534	R61 001 310	G	Sensor holder		1	1				KB25B471H03		
535	R63 852 860	G	Rubber mount		4	4				W897574H01	For compressor	

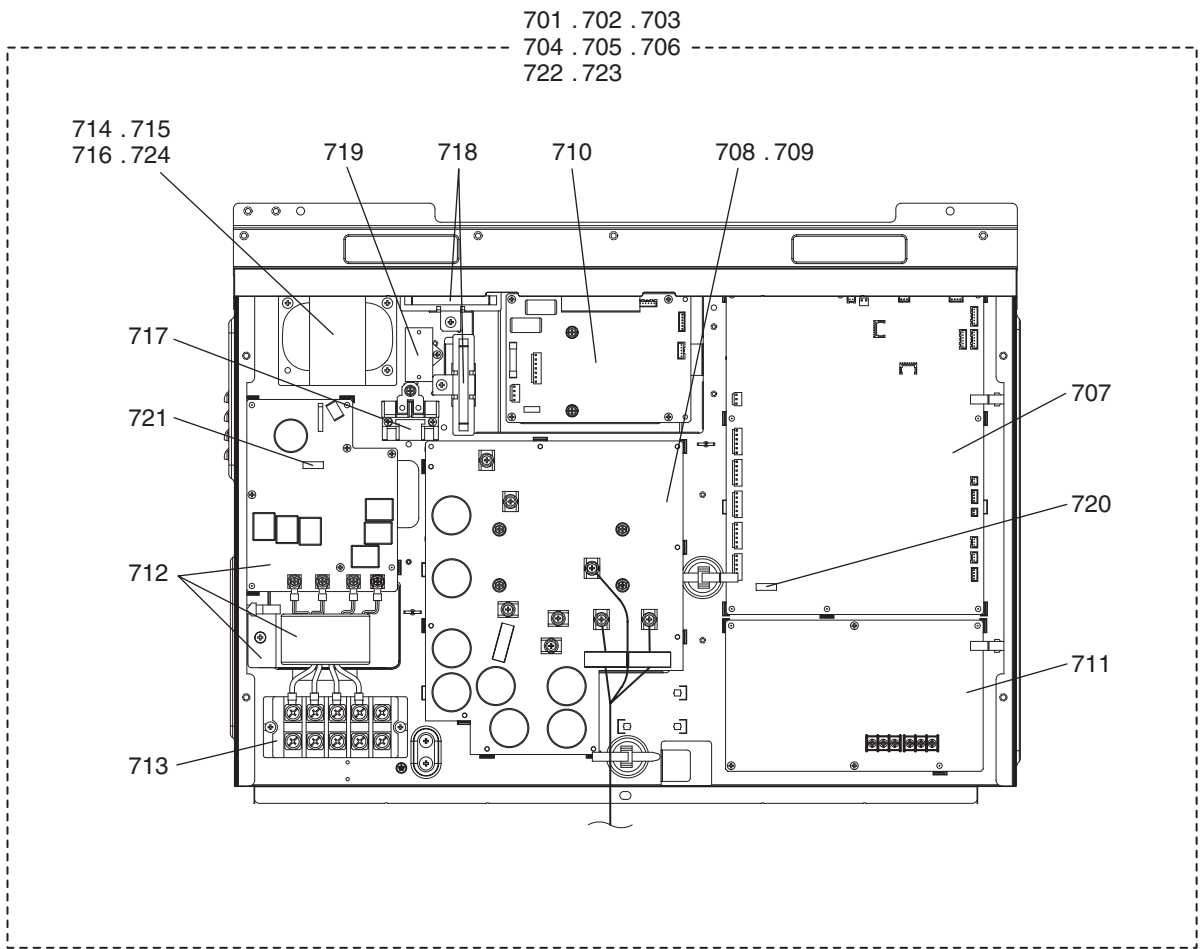


No.	Part No.	G : RoHS Apply Only W : RoHS Apply by Running Change	Part Name	Spec.	PUHY-EP300YKM-A	PUHY-EP350YKM-A-BS	PUHY-EP350YKM-A	PUHY-EP350YKM-A-BS	PUHY-EP400YKM-A	PUHY-EP400YKM-A-BS	Dwg. No.	Notes for the models	Revision info.
601	R69 104 478	G	Scroll compressor	HNB83FB-YE(S)	1	1	1	1			EP10136B03		
602	R61 642 480	G	Heat exchanger L	3L	1		1		1		KD01R771G01		
603	R61 643 480	G	Heat exchanger L	3L BS		1		1		1	KD01R771G02		
604	R63 644 480	G	Heat exchanger R	3L	1		1		1		KD01R885G01		
605	R63 645 480	G	Heat exchanger R	3L BS		1		1		1	KD01R885G02		
606	R61 120 484	G	Accumulator assy		1		1		1		KB54B479G35		
607	R61 121 484	G	Accumulator assy	BS		1		1		1	KB54B479G36		
608	R61 032 487	G	Oil separator assy		1	1	1	1	1	1	KD00R796G01		
609	R61 009 410	G	Ball valve	JA10YGME 4.15MPa D25	1	1	1	1	1	1	P636358X01	<BV1>	
610	R61 004 540	G	Valve	VSAMH4SSCM-LA1	1	1	1	1	1	1	P636345X01	<BV2>	
611	R61 008 454	G	Strainer	25.4D	1	1	1	1	1	1	KB48K250G01	<ST1>	
612	R63 Y03 454	G	Strainer	17.6D	1	1	1	1	1	1	W893281G01	<ST2>	
613	R63 R34 413	G	Check joint L	R410A	2	2	2	2	2	2	P666004X02	<(HP)CJ1,(LP)CJ2>	
614	R63 R55 425	G	Capillary tube assy		1	1	1	1	1	1	W905191G02	<CP1>	
615	R63 021 425	G	Capillary tube		1	1	1	1	1	1	KD49D414G01	<CP2>	
616	R61 005 418	G	Check valve	YAV R410A CV3.5	1	1	1	1	1	1	P633133X01	<CV1>	
617	R61 003 418	G	Check valve	LCVP157M CV8.5	1	1	1	1	1	1	P639180X01	<CV2>	
618	R63 Y05 154	G	Four way valve	STF-07	3	3	3	3	3	3	P633119X01	<21S4a,21S4b,21S4c>	
619	R63 Y16 243	G	Four way valve coil	STF-01 220-240V	3	3	3	3	3	3	P472024X01	<21S4a,21S4b,21S4c>	
620	R63 004 421	G	Two way valve	VR43202 CV 7.4 OFF-OPEN	2	2	2	2	2	2	P633129X01	<SV5b,SV5c>	
621	R63 031 243	G	Two way valve coil	SQ-240V L1500	2	2	2	2	2	2	P472085X01	<SV5b,SV5c>	
622	R63 046 232	G	Solenoid valve	FD2A77 SV CV0.07	2	2	2	2	2	2	P631312X01	<SV1a,SV9>	
623	R63 032 243	G	Solenoid valve coil	FQG625 240V L1500	2	2	2	2	2	2	P472070X01	<SV1a,SV9>	
624	R63 001 921	G	Solenoid valve	VPV R410A	1	1	1	1	1	1	P631295X01	<SV2>	
625	R61 015 243	G	Solenoid valve coil	VPV Y2 AC220V-240V 50Hz	1	1	1	1	1	1	P472048X01	<SV2>	
626	R63 4H6 401	G	Linear expansion valve	CAM35-S R410A	1	1	1	1	1	1	P632444X01	<LEV1>	
627	R63 011 401	G	Solenoid valve coil	DC12V D17.35 POLE6	1	1	1	1	1	1	P472059X02	<LEV1>	
628	R61 036 401	G	Linear expansion valve	CV 20TON(PAM)	1	1	1	1	1	1	P632504X01	<LEV2>	
629	R61 022 243	G	Solenoid valve coil	PAM DC12V 6POLE	1	1	1	1	1	1	P472061X02	<LEV2>	
630	R63 Y11 208	G	Pressure switch	ACB1UB28W	1	1	1	1	1	1	P426320X01	<63H1>	
631	R63 051 288	G	Pressure sensor	HP	1	1	1	1	1	1	KB00F899G33	<63HS1>	
632	R63 025 288	G	Pressure sensor	LP	1	1	1	1	1	1	KB00F899G13	<63LS>	
633	R61 060 200	G	Thermistor	CHIP TH. 15k	4	4	4	4	4	4	P418065X01	<TH3,TH5,TH6,TH7>	
634	R63 172 200	G	Thermistor	8D-2500L R0/15k B0/3465K	1	1	1	1	1	1	P418098X01	<TH2>	
635	R63 911 202	G	Thermistor		1	1	1	1	1	1	P425416X02	<TH4>	
636	R61 001 310	G	Sensor holder		1	1	1	1	1	1	KB25B471H03		
637	R63 852 860	G	Rubber mount		4	4	4	4	4	4	W897574H01	For compressor	
638	R69 107 478	G	Scroll compressor	HNB84FC1-Y(S)					1	1	EP10126B02		Add

No.	Part No.	G : RoHS Apply Only W : RoHS Apply by Running Change		Spec.	PUHY-EP450YKM-A	PUHY-EP400YKM-A				Dwg. No.	Notes for the models	Revision info.
			Part Name									
601	R69 104 478	G	Scroll compressor	HNB83FB-YE(S)						EP10136B03		
602	R61 642 480	G	Heat exchanger L	3L	1					KD01R771G01		
603	R61 643 480	G	Heat exchanger L	3L BS		1				KD01R771G02		
604	R63 644 480	G	Heat exchanger R	3L	1					KD01R885G01		
605	R63 645 480	G	Heat exchanger R	3L BS		1				KD01R885G02		
606	R61 120 484	G	Accumulator assy		1					KB54B479G35		
607	R61 121 484	G	Accumulator assy	BS		1				KB54B479G36		
608	R61 032 487	G	Oil separator assy		1	1				KD00R796G01		
609	R61 009 410	G	Ball valve	JA10YGME 4.15MPa D25	1	1				P636358X01	<BV1>	
610	R61 004 540	G	Valve	VSAMH4SSCM-LA1	1	1				P636345X01	<BV2>	
611	R61 008 454	G	Strainer	25.4D	1	1				KB48K250G01	<ST1>	
612	R63 Y03 454	G	Strainer	17.6D	1	1				W893281G01	<ST2>	
613	R63 R34 413	G	Check joint L	R410A	2	2				P666004X02	<(HP)CJ1,(LP)CJ2>	
614	R63 R55 425	G	Capillary tube assy		1	1				W905191G02	<CP1>	
615	R63 021 425	G	Capillary tube		1	1				KD49D414G01	<CP2>	
616	R61 005 418	G	Check valve	YAV R410A CV3.5	1	1				P633133X01	<CV1>	
617	R61 003 418	G	Check valve	LCVP157M CV8.5	1	1				P639180X01	<CV2>	
618	R63 Y05 154	G	Four way valve	STF-07	3	3				P633119X01	<21S4a,21S4b,21S4c>	
619	R63 Y16 243	G	Four way valve coil	STF-01 220-240V	3	3				P472024X01	<21S4a,21S4b,21S4c>	
620	R63 004 421	G	Two way valve	VR43202 CV 7.4 OFF-OPEN	2	2				P633129X01	<SV5b,SV5c>	
621	R63 031 243	G	Two way valve coil	SQ-240V L1500	2	2				P472085X01	<SV5b,SV5c>	
622	R63 046 232	G	Solenoid valve	FDFA277 SV CV0.07	2	2				P631312X01	<SV1a,SV9>	
623	R63 032 243	G	Solenoid valve coil	FQG625 240V L1500	2	2				P472070X01	<SV1a,SV9>	
624	R63 001 921	G	Solenoid valve	VPV R410A	1	1				P631295X01	<SV2>	
625	R61 015 243	G	Solenoid valve coil	VPV Y2 AC220V-240V 50Hz	1	1				P472048X01	<SV2>	
626	R63 4H6 401	G	Linear expansion valve	CAM35-S R410A	1	1				P632444X01	<LEV1>	
627	R63 011 401	G	Solenoid valve coil	DC12V D17.35 POLE6	1	1				P472059X02	<LEV1>	
628	R61 036 401	G	Linear expansion valve	CV 20TON(PAM)	1	1				P632504X01	<LEV2>	
629	R61 022 243	G	Solenoid valve coil	PAM DC12V 6POLE	1	1				P472061X02	<LEV2>	
630	R63 Y11 208	G	Pressure switch	ACB1UB28W	1	1				P426320X01	<63H1>	
631	R63 051 288	G	Pressure sensor	HP	1	1				KB00F899G33	<63HS1>	
632	R63 025 288	G	Pressure sensor	LP	1	1				KB00F899G13	<63LS>	
633	R61 060 200	G	Thermistor	CHIP TH. 15k	4	4				P418065X01	<TH3,TH5,TH6,TH7>	
634	R63 172 200	G	Thermistor	8D-2500L R0/15k B0/3465K	1	1				P418098X01	<TH2>	
635	R63 911 202	G	Thermistor		1	1				P425416X02	<TH4>	
636	R61 001 310	G	Sensor holder		1	1				KB25B471H03		
637	R63 852 860	G	Rubber mount		4	4				W897574H01	For compressor	
638	R69 107 478	G	Scroll compressor	HNB84FC1-Y(S)	1	1				EP10126B02		Add

PUHY-EP200,EP250YKM-A(-BS)
PUHY-EP300,EP350YKM-A(-BS)
PUHY-EP400,EP450YKM-A(-BS)

CONTROL BOX PARTS

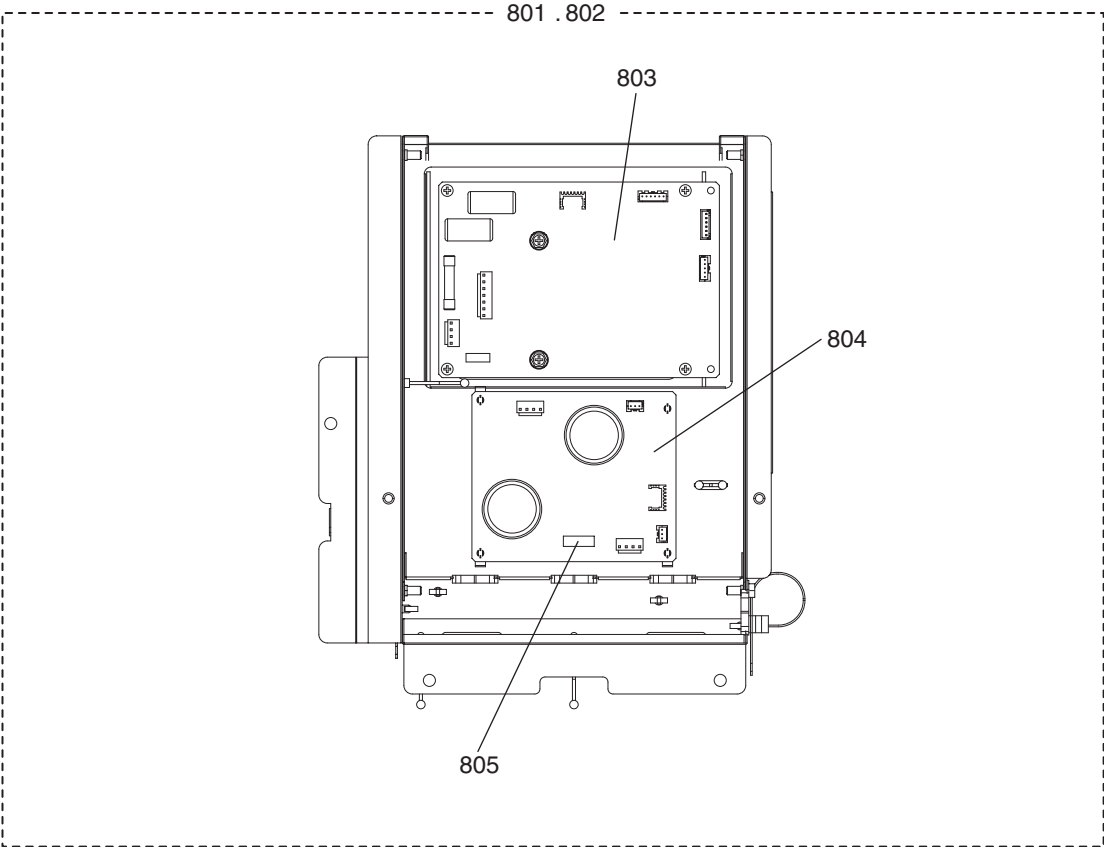


**PUHY-EP200,EP250YKM-A(-BS)
PUHY-EP300,EP350YKM-A(-BS)
PUHY-EP400,EP450YKM-A(-BS)**

CONTROL BOX PARTS

No.	Part No.	G : RoHS Apply Only W : RoHS Apply by Running Change		Spec.	PUHY-EP200YKM-A	PUHY-EP200YKM-A-BS	PUHY-EP250YKM-A	PUHY-EP250YKM-A-BS	PUHY-EP300YKM-A	PUHY-EP300YKM-A-BS	Dwg. No.	Notes for the models	Revision info.
			Part Name										
701	R61 465 305	G	Control box	Y-EP200	1						KE80C542G51		
702	R61 466 305	G	Control box	Y-EP200 BS		1					KE80C542G52		
703	R61 467 305	G	Control box	Y-EP250			1				KE80C542G53		
704	R61 468 305	G	Control box	Y-EP250 BS				1			KE80C542G54		
705	R61 469 305	G	Control box	Y-EP300					1		KE80C542G55		
706	R61 470 305	G	Control box	Y-EP300 BS						1	KE80C542G56		
707	R63 238 280	G	Control board		1	1	1	1	1	1	KE80C704G06	<MAIN07>	
708	R63 237 280	G	INV board		1	1	1	1			KE80C154G13	<INV20Y>	
709	R61 240 280	G	INV board						1	1	KE80C154G14	<INV20Y>	
710	R63 192 280	G	Fan board		1	1	1	1	1	1	W652171G14	<INV/S11Y>	
711	R63 187 280	G	M-NET board		1	1	1	1	1	1	KE80C055G06	<PS-MNET-Y>	
712	R61 028 293	G	Noise filter	board,coil,plate	1	1	1	1	1	1	KE80C727G03		
713	R61 007 246	G	Terminal block		1	1	1	1	1	1	S436005H12	<TB1>	
714	R61 017 259	G	Reactor		1	1					P715458X01	<DCL>	
715	R61 027 259	G	Reactor				1	1			P715476X01	<DCL>	
716	R61 028 259	G	Reactor						1	1	P715475X01	<DCL>	
717	R61 003 216	G	Relay		1	1	1	1	1	1	P421295X01	<72C>	
718	R61 001 234	G	Resistor		2	2	2	2	2	2	P411151X01	<R1,R5>	
719	R61 001 255	G	Capacitor assy		1	1	1	1	1	1	KE00D263G01	<C100>	
720	R61 005 239	G	Fuse	3.15A AC250V T	1	1	1	1	1	1	S423001H39		
721	R61 006 239	G	Fuse	6.3A AC250V T	1	1	1	1	1	1	S423001H42		
722	R61 485 305	G	Control box	Y-EP350							KE80C542G65		Add
723	R61 486 305	G	Control box	Y-EP350BS							KE80C542G66		Add
724	R61 012 259	G	Reacter								P715441X02		Add

No.	Part No.	G : RoHS Apply Only W : RoHS Apply by Running Change	Part Name	Spec.	PUHY-EP200YKM-A	PUHY-EP250YKM-A	PUHY-EP300YKM-A	PUHY-EP350YKM-A	PUHY-EP400YKM-A	PUHY-EP450YKM-A	Dwg. No.	Notes for the models	Revision info.
701	R61 465 305	G	Control box	Y-EP200							KE80C542G51		
702	R61 466 305	G	Control box	Y-EP200 BS							KE80C542G52		
703	R61 467 305	G	Control box	Y-EP250							KE80C542G53		
704	R61 468 305	G	Control box	Y-EP250 BS							KE80C542G54		
705	R61 469 305	G	Control box	Y-EP300							KE80C542G55		
706	R61 470 305	G	Control box	Y-EP300 BS							KE80C542G56		
707	R63 238 280	G	Control board		1	1	1	1	1	1	KE80C704G06	<MAIN07>	
708	R63 237 280	G	INV board								KE80C154G13	<INV20Y>	
709	R61 240 280	G	INV board		1	1	1	1	1	1	KE80C154G14	<INV20Y>	
710	R63 192 280	G	Fan board		1	1	1	1	1	1	W652171G14	<INV/S11Y>	
711	R63 187 280	G	M-NET board		1	1	1	1	1	1	KE80C055G06	<PS-MNET-Y>	
712	R61 028 293	G	Noise filter	board,coil,plate	1	1	1	1	1	1	KE80C727G03		
713	R61 007 246	G	Terminal block		1	1	1	1	1	1	S436005H12	<TB1>	
714	R61 017 259	G	Reactor								P715458X01	<DCL>	
715	R61 027 259	G	Reactor								P715476X01	<DCL>	
716	R61 028 259	G	Reactor								P715475X01	<DCL>	
717	R61 003 216	G	Relay		1	1	1	1	1	1	P421295X01	<72C>	
718	R61 001 234	G	Resistor		2	2	2	2	2	2	P411151X01	<R1,R5>	
719	R61 001 255	G	Capacitor assy		1	1	1	1	1	1	KE00D263G01	<C100>	
720	R61 005 239	G	Fuse	3.15A AC250V T	1	1	1	1	1	1	S423001H39		
721	R61 006 239	G	Fuse	6.3A AC250V T	1	1	1	1	1	1	S423001H42		
722	R61 485 305	G	Control box	Y-EP350	1		1		1		KE80C542G65		Add
723	R61 486 305	G	Control box	Y-EP350BS		1		1		1	KE80C542G66		Add
724	R61 012 259	G	Reacter		1	1	1	1	1	1	P715441X02		Add



No.	Part No.	G : RoHS Apply Only W : RoHS Apply by Running Change		Spec.	PUHY-EP450YKM-A	PUHY-EP450YKM-A-BS				Dwg. No.	Notes for the models	Revision info.
		Part Name										
801	R61 471 305	G			1					KE80C721G05		
802	R61 472 305	G			1					KE80C721G06		
803	R63 192 280	G			1	1				W652171G14	<INV/S11Y>	
804	R63 194 280	G			1	1				KE80C725G02	<CONNECT01>	
805	R12 001 964	G			1	1				S423001H40		

mitsubishi **ELECTRIC CORPORATION**
HEAD OFFICE: TOKYO BLDG., 2-7-3, MARUNOUCHI, CHIYODA-KU, TOKYO 100-8310, JAPAN

BWE01209A (20130531)