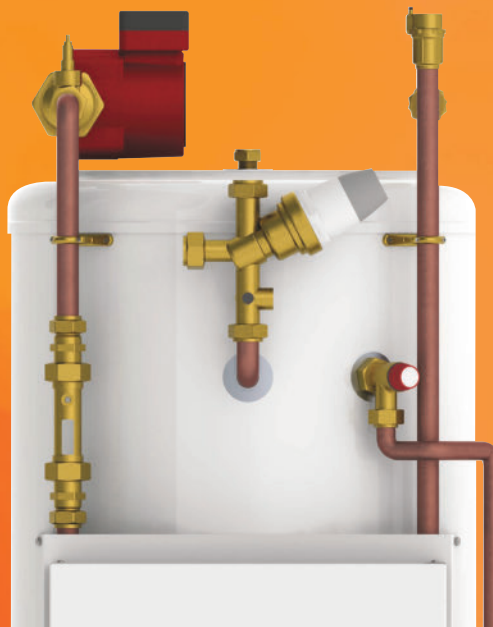


Product Information

ECOSLIM-150-180L-PP-MEUK

Pre-plumbed Slimline Cylinder
for Ecodan Monobloc units

Making a
World of
Difference



Pre-plumbed slimline space heating and domestic hot water solution for Ecodan monobloc air source heat pumps



The optimised pre-plumbed slimline cylinder comes complete with integrated hydraulic components and advanced self-learning controls.

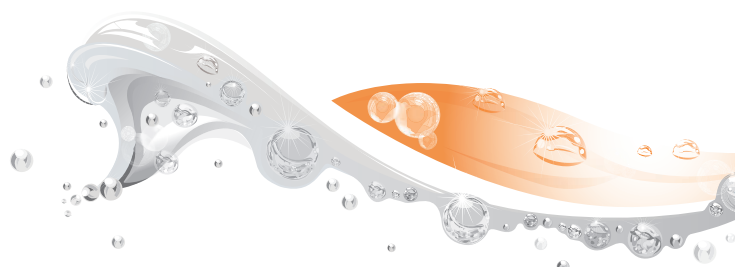
Designed to minimise floor space and footprint whilst still offering optimum performance, the cylinder completely integrates with the Ecodan monobloc air source heat pump range. The pre-plumbed slimline cylinder unit provides improved performance with a simple to use graphical interface controller. Fast on site commissioning is now available via a pre-programmed SD card.

Key Features

- Simple graphical control
- Optional 2-Zone energy efficient space heating control
- Compatible with Mitsubishi Electric wireless room controllers
- Pre-plumbed and wired for faster installation
- Factory fitted magnetic filtration system
- Hybrid function, for use with conventional boilers
- SD card commissioning



Air Conditioning | Heating
Ventilation | Controls



Heating

Product Information

ECOSLIM-150-180L-PP-MEUK

Pre-plumbed Slimline Cylinder
for Ecodan Monobloc units

Making a
World of
Difference

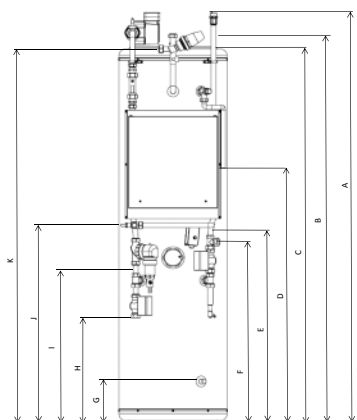
PRE-PLUMBED SLIMLINE CYLINDER UNIT			ECOSLIM-150L-PP-MEUK	ECOSLIM-180L-PP-MEUK
Nominal hot water volume (litres)			150	180
Water		Flow Rate (l/min) W50 - W85	14.3 - 25.8	14.3 - 25.8
		Pump	1 x Grundfos UPS2 25-60	1 x Grundfos UPS2 25-60
		Connection Size (mm) Heating / DHW (mm)	22	22
		Primary Expansion Vessel (Litres)	12	19
		Charge Pressure (MPa (Bar))	0.3 (3)	0.3 (3)
Water Safety Devices	Water Circuit	Control Thermistor (°C)	1 - 80	1 - 80
		Pressure Relief Valve (MPa (Bar))	0.3 (3)	0.3 (3)
		Expansion Relief Valve (Cold)	0.6 (6)	0.6 (6)
	DHW Tank	Control Thermistor	40-70	40-70
		High Limit Stat (°C)	Mechanical 80	Mechanical 80
		Temp and Pressure Relief Valve (°C/ (MPa (Bar))	90 / 0.7 (7)	90 / 0.7 (7)
Dimensions (mm)		Width	475	475
		Depth	565	565
		Height	1880	1950
Weight empty/full (kg)			65.5 / 215.5	69.5 / 249.5
Cylinder Material	Tank	Cylinder Material	Stainless Steel	Stainless Steel
		Heating Surface Area (m²)	2	3
	Insulation	Insulation Type	Polyurethane (PU) Insulation with CO ₂ Blowing Agent	
		Insulation Thickness (mm)	50	50
		Standing Heat Loss (kWh/24hrs)	1.31	1.6
		GWP of Insulation	0	0
		ODP of Insulation	Less than 5	Less than 5
		Electrical Supply	220-240v, 50Hz	220-240v, 50Hz
	Control Board <i>optionally powered by outdoor unit</i>	Phase	Single	Single
Fuse Rating - MCB Sizes (A)*1		10	10	
Immersion Heater		Electrical Supply	220-240v, 50Hz	220-240v, 50Hz
		Phase	Single	Single
	Capacity (kW)	3	3	
	Max Running Current (A)	13	13	
			16	16
Mechanical Zones			DHW and 1 heating zone *2	DHW and 1 heating zone *2
Optional simplified wireless room thermostat and wireless receiver			PAR-WT50-E controller and PAR-WR51-E receiver	

*1 MCB Sizes BS EN60898-2 & BS EN60947-2

*2 Optional 2 zone accessory available



ECOSLIM-150-180L-PP-MEUK DIMENSIONS



- A Top of AAV (Highest point)
- B Mains Cold Feed and Heat Pump Flow
- C Hot Water Outlet
- D Tundish Outlet
- E Heating Zone 1 Flow
- F Heating Zone 2 Flow
- G Domestic Hot Water Drain
- H Heating Zone 1 Return
- I Heating Zone 2 Return
- J Automatic Bypass Valve
- K Balanced Cold Feed

MODEL	A	B	C	D	E	F	G	H	I	J	K
150L-PP-MEUK	1880	1780	1740	1360	940	860	80	487	730	1100	1800
180L-PP-MEUK	1950	1850	1810	1360	940	860	80	487	730	1100	1870

*All dimensions in mm



Telephone: 01707 282880

email: heating@meuk.mee.com web: heating.mitsubishielectric.co.uk

UNITED KINGDOM Mitsubishi Electric Europe Living Environmental Systems Division
Travellers Lane, Hatfield, Hertfordshire, AL10 8XB, England General Enquiries Telephone: 01707 282880 Fax: 01707 278881

IRELAND Mitsubishi Electric Europe Westgate Business Park, Ballymount, Dublin 24, Ireland
Telephone: Dublin (01) 419 8800 Fax: Dublin (01) 419 8890 International code: (003531)

Country of origin: United Kingdom - Japan - Thailand - Malaysia. ©Mitsubishi Electric Europe 2014. Mitsubishi and Mitsubishi Electric are trademarks of Mitsubishi Electric Europe B.V. The company reserves the right to make any variation in technical specification to the equipment described, or to withdraw or replace products without prior notification or public announcement. Mitsubishi Electric is constantly developing and improving its products. All descriptions, illustrations, drawings and specifications in this publication present only general particulars and shall not form part of any contract. All goods are supplied subject to the Company's General Conditions of Sale, a copy of which is available on request. Third-party product and brand names may be trademarks or registered trademarks of their respective owners.



Printed in February 2014 SAP No. 273071



www.greengateway.mitsubishielectric.co.uk

Mitsubishi Electric UK's commitment to the environment



Follow us @green_gateway



Connect with Green Gateway



mitsubishielectric2